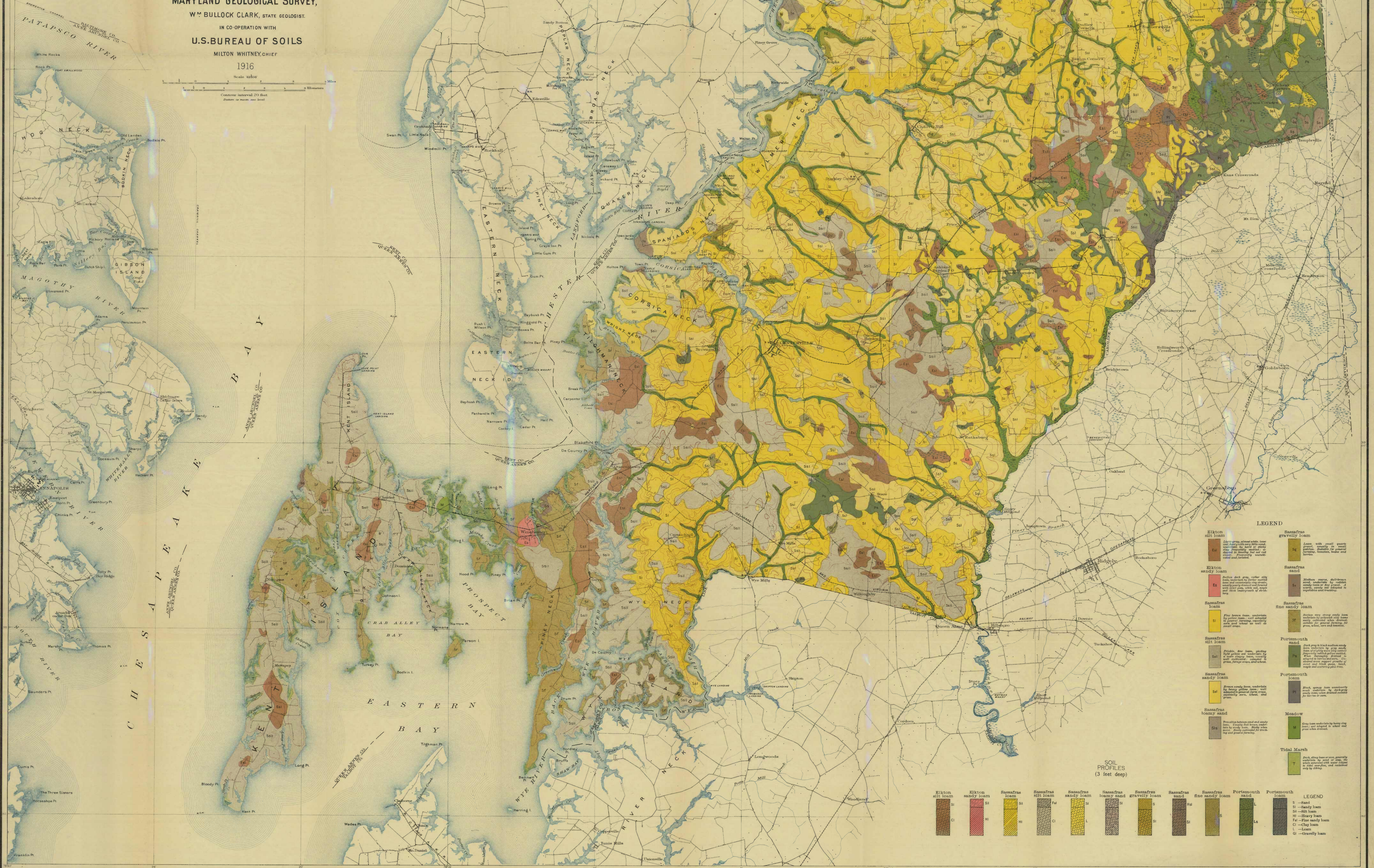


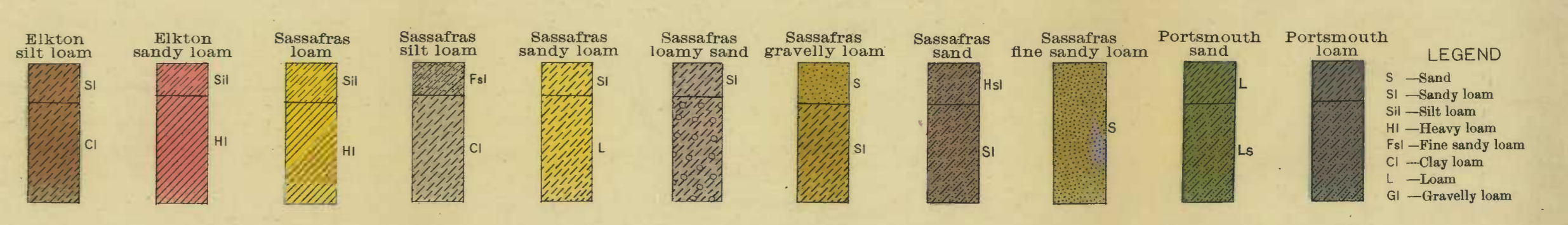
MAP OF QUEEN ANNE'S COUNTY SHOWING THE AGRICULTURAL SOILS

MARYLAND GEOLOGICAL SURVEY,
WM BULLOCK CLARK, STATE GEOLOGIST,
IN CO-OPERATION WITH
U.S. BUREAU OF SOILS
MILTON WHITNEY, CHIEF
1916

Scale 1:50,000
Contour interval 20 feet
Datum of mean low water



- LEGEND**
- Hickton silt loam**: Light gray, silty, fine to medium grained, with small roots, generally in level to gently sloping land, especially near water courses. Frequently under forest and pasture.
 - Hickton sandy loam**: Yellow and gray, rather fine, medium grained, with small roots, generally in level to gently sloping land, especially near water courses. Frequently under forest and pasture.
 - Sassafras loam**: Fine brown loam, medium grained, with small roots, generally in level to gently sloping land, especially near water courses. Frequently under forest and pasture.
 - Sassafras silt loam**: Yellow, fine to medium grained, with small roots, generally in level to gently sloping land, especially near water courses. Frequently under forest and pasture.
 - Sassafras sandy loam**: Yellow, fine to medium grained, with small roots, generally in level to gently sloping land, especially near water courses. Frequently under forest and pasture.
 - Sassafras loamy sand**: Yellow, fine to medium grained, with small roots, generally in level to gently sloping land, especially near water courses. Frequently under forest and pasture.
 - Sassafras gravelly loam**: Yellow, fine to medium grained, with small roots, generally in level to gently sloping land, especially near water courses. Frequently under forest and pasture.
 - Sassafras sand**: Yellow, fine to medium grained, with small roots, generally in level to gently sloping land, especially near water courses. Frequently under forest and pasture.
 - Portsmouth loam**: Dark gray, silty, fine to medium grained, with small roots, generally in level to gently sloping land, especially near water courses. Frequently under forest and pasture.
 - Portsmouth sand**: Dark gray, silty, fine to medium grained, with small roots, generally in level to gently sloping land, especially near water courses. Frequently under forest and pasture.
 - Meadow**: Dark, silty loam or silt, generally in level to gently sloping land, especially near water courses. Frequently under forest and pasture.
 - Tidal Marsh**: Dark, silty loam or silt, generally in level to gently sloping land, especially near water courses. Frequently under forest and pasture.



Soils surveyed by Hugh H. Bennett, W. S. Lyman, W. D. Thorpe and W. L. Weaver, 1907