

Q5943
-B3 C28
1989
copy 1

STATE OF MARYLAND

MARYLAND GEOLOGICAL SURVEY

KENNETH N. WEAVER, DIRECTOR

SLOPE MAP OF

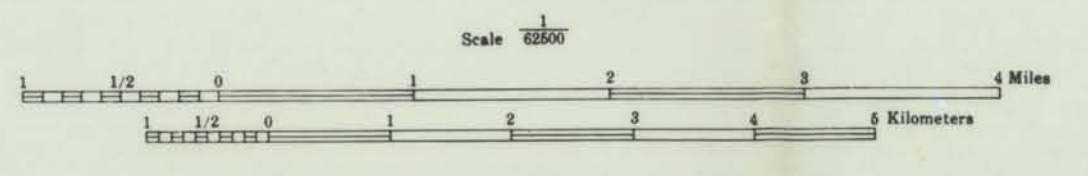
BALTIMORE COUNTY

COMPILED FROM 7.5 MINUTE TOPOGRAPHIC QUADRANGLES OF THE
U. S. ARMY CORPS OF ENGINEERS
U. S. GEOLOGICAL SURVEY

TOPOGRAPHIC BASE (1985)
CULTURE REVISED (1989) BY JEANNE McLENNAN

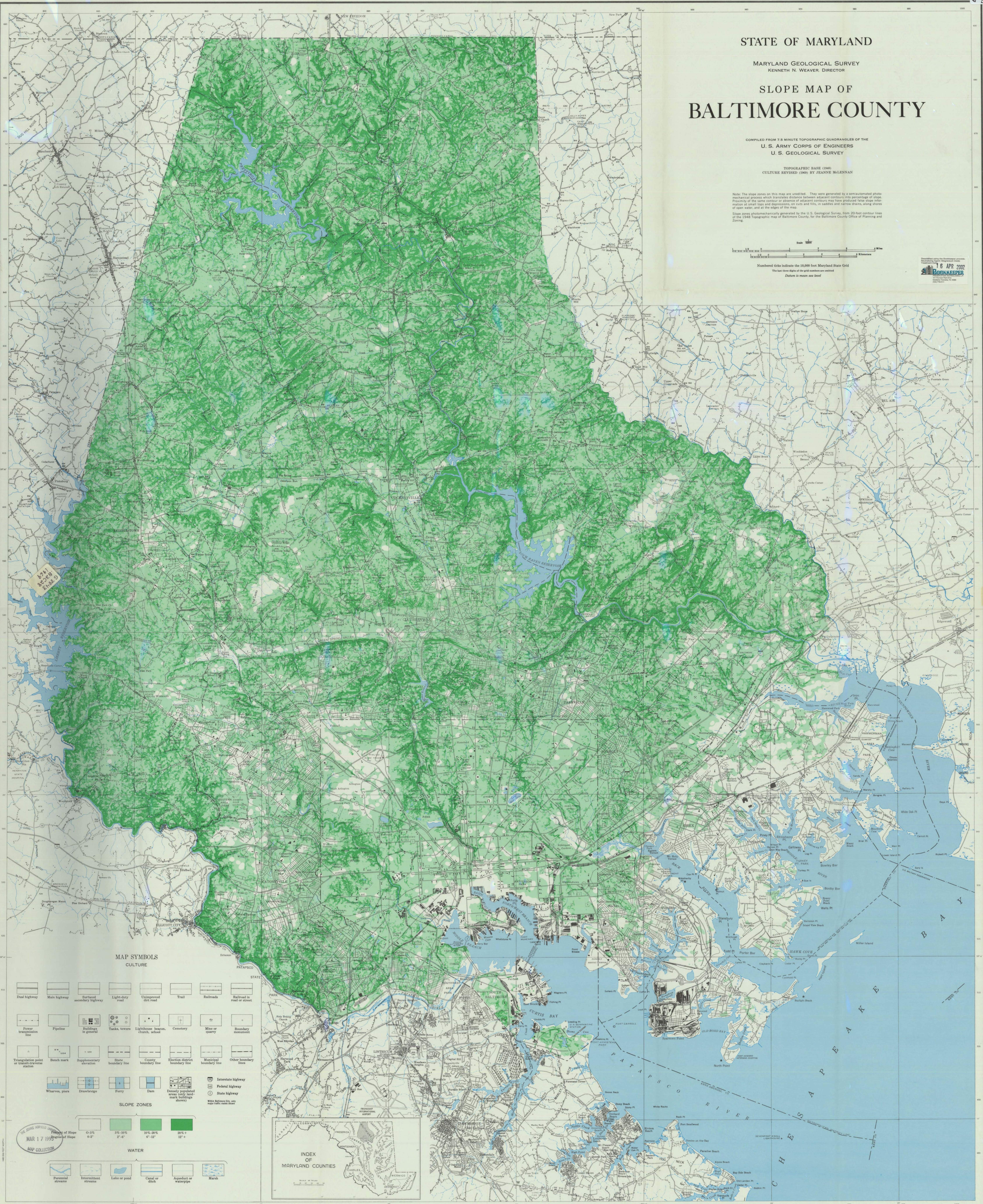
Note: The slope zones on this map are unaided. They were generated by a semi-automated photo-mechanical process which translates distance between adjacent contours into percentage of slope. Proximity of the same contour or absence of adjacent contours may have produced false slope information at small scale and disjunctions on cuts and fills, in saddles and narrow drains, along shores of open water, and at the edges of the map.

Slope zones photomechanically generated by the U. S. Geological Survey, from 20-foot contour lines of the 1948 topographic map of Baltimore County, for the Baltimore County Office of Planning and Zoning.



Numbered ticks indicate the 10,000 foot Maryland State Grid
The last two digits of the grid numbers are omitted
Datum is mean sea level

16 APR 2002
BOOKKEEPER

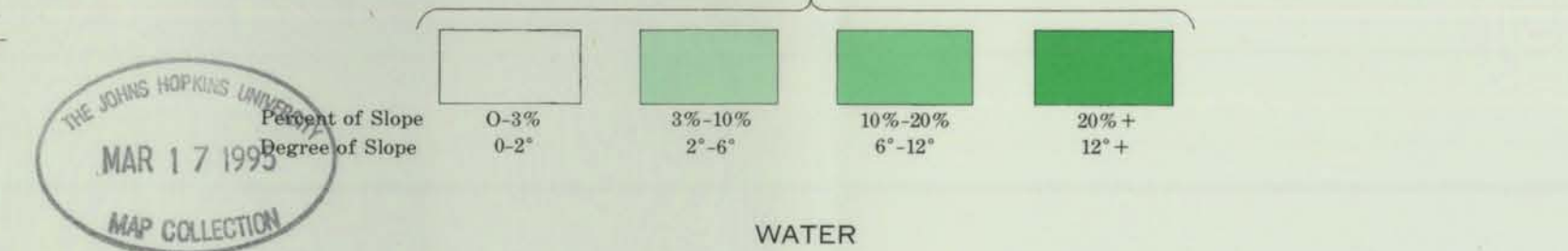


MAP SYMBOLS

CULTURE

- | | | | | | | | |
|--|--------------|-----------------------------|---------------------|---|---------------------------------|-------------------------|----------------------------|
| Dual highway | Main highway | Surfaced secondary highway | Light-duty road | Unimproved dirt road | Trail | Railroads | Railroad in road or street |
| Power transmission line | Pipeline | Right-of-way in general | Tanks, towers | Lighthouse, beacon, church, school | Cemetery | Mine or quarry | Boundary monument |
| Triangulation point or transit-station | Bench mark | Supplementary boundary line | State boundary line | County boundary line | Election district boundary line | Municipal boundary line | Other boundary line |
| Wharves, piers | Drawbridge | Ferry | Dam | Densely populated areas only (landmark buildings shown) | Interstate highway | Federal highway | State highway |

SLOPE ZONES



WATER

- | | | | | | |
|------------------|---------------------|--------------|----------------|------------------------|-------|
| Perennial stream | Intermittent stream | Lake or pond | Canal or ditch | Artificial or waterway | Marsh |
|------------------|---------------------|--------------|----------------|------------------------|-------|

