

Prattis, Lillian Lee

1927 - January 27

Caroline

Preadesux, Gladis

1924 - Jan. 3

Worcester

Preadeaux, Mary

1926 - October 27

Worcester

Prease, Virginia
Inez

1925 - January 10

Baltimore

Preble, Elmer T.

1926 - September 26

Baltimore

Preble, Mae Letitia

1927 - March 12

Montgomery

Prechtel, Ida L.
Gardner

1932 - June 20

Anne Arundel

Prechtel, Mary Anna

1928 - October 8

Baltimore

Prechtel, Mary
Virginia

1929 - June 28

Anne Arundel

Predo, Lennie

1934 - Feb. 11

Harvard U.

Predo, Sidney

1929 - February 17

Worcester

Free, Carry M.
Jackson

1924 - June 24

Wicomico

Pregram, Paul Jr.

1933 - October 10

Coil

Preis, Milton Leonard

1926 - September 2

Carroll

Prell, Charles C.

1925 - November 24

Carroll

Preller, Sister
Mary Sigbert

1933 - March 11

Baltimore

See Sister

Presbery,

1924 - March 9

Harford.

Presberry, Emma

1928 - January 1

Harford

Presberry, John M.

1933 - April 2

Harford

Presberry, Martha
E.

1930 - March 15

Harford

Presberry, Robert

1928 - March 24

Harford

Arenberry, Sarah W.

1928 - May 10

Harford

Presburry, John E.

1933 - November 20

Harford

Presbury, Amous

1925 - June 11

Harford

Presbury, Cleveland

1931 - September 12

Warford

Presbury, Eliza I.

1984 - September 22

Baltimore

Presbury, Emma C.

1925 - November 6

Harford

Presbery, George
Robert

1925 - February 15

Harford

Presbury, James W.

1928 - July 22

Montgomery

Presbury, Robert
Alexander

1931 - December 1.

Montgomery

Presbury, Wilfred
H.

1929 - August 15

Harford

Preschell, Mary E.

1928 - April 1

Coil

Prescott, Alexander
Fullerton

1932 - March 15

Montgomery

Prescott, Edith
Kellogg

1929 - November 7

Montgomery

Presgraves, Dorothy
Lutitia

1925 - September 4

Washington

Presley, Mary E.

1929 - April 8

Prince George

Press, Gertie

1928 - April 23

Baltimore

Presser, Mary M.

1928 - October 3

Frederick

Pressler, Frederick
P.

1928 - March 26

Baltimore

Pressman, Catherine
Elizabeth

1927 - August 7

Allegany

Pressman, Henry

1930 - November 25

Allegany

Pressman, John

1931 - January 28

Allegany

Presstman, Benjamin
C.

1928 - October 13

Carroll

Presstman, Frank

1931 - April 16

Prince George

Preston,

1933 - June 20

Coil

Preston, Harry Jr.

1924 - January 17

Allegany

Preston, Helena M.

1926 - March 15

Ce011

Preston, Irene

1989 - January 3

Washington

Preston, James
Harry

1927 - April 28

Harford

Preston, John G.

1925 - July 10

Harford

Wreston, John Thos.

1932 - April 1

Allegany

Preston, John W.

1924 - April 4

Allegany

Freston, John
Wesley

1925 - February 12

Baltimore

Preston, Harry N.

1932 - March 24

Frederick

Preston, Ida

1932 - January 21

Harford

Preston, Isaac

1929 - August 20

Harford

Preston, Jacob

1929 - June 2

Dorchester

Preston, Elizabeth

1926 - May 2

Harford

Preston, Frances O.

1933 - January 5

Warford

Preston, Francis K.

1929- December 8

Prince George

Preston, Freddie

1928 - December 28

Queen Anne

Preston, George

1933 - February 18

Cecil

Preston, George M.

1925 - August 5

Cecil

Preston, George M.

1932 - January 19

Anno Arandel

Preston, Harry Jr.

1924 - January 17

Allegany

Preston, Helena M.

1926 - March 15

Coil

Preston, Irene

1929 - January 3

Washington

Preston, James

Harry

1927 - April 26

Harford

Preston, John G.

1925 - July 10

Harford

...ston, John Thos.

1932 - April 1

Allegany

Preston, John W.

1924 - April 4

Allegany

Ston, John
Wesley
1925 - February 12
Baltimore

Preston, Harry N.

1932 - March '4

Fredrick

Preston, Ida

1932 - January 21

Harford

Preston, Isaac

1929 - August 20

Harford

Preston, Jacob

1929 - June 2

Dorchester

Preston, Mary
Elizabeth

1932 - April 6

Washington

Preston, Mary George

1927 -- March 14

Baltimore

Preston, Mary V.

1933 - May 20

Harford

Preston, Oliver

1932 - February 20

Baltimore

Preston, Oliver J.

1931 - August 3

Prince George

eston, Peter

1925 - March 27

Allegany

Preston, Robert H.

1932 - August 6

Prince George

son, Robert
Stanley

1932 - December 4

Harrford

Preston, Wesley S.

1928 - March 9

Harford

Preston, William L.

1931 - August 1

Allegany

Prettyman, Anna E.

1930 - March 2

Caroline

Prettyman, Cornelia
C.

1932 - October 11

Caroline

Prettyman, Henry

1931 - January 18

Howard

Prettymen, John

1932 - June 6

Carroll

Smith, Kenneth

1932 - April 14

Wicomico

Prettyman, Louis
O.

1930-Aug 16

Wicomico

Prettyman, Rolph Jr.

1927 - September 26

Worcester

Prettyman, William H.

1933 - June 7

Wicomico

Pretzsch, Laura M.

1933 - May 28

Baltimore

Preu, Frederick

1927 - December 21

Baltimore

Pratt, James

1933 - February 17

Calvert

Pratt, John E.

1932 - July 11

Anne Arundel

Pratt, James

1933 - February 17

Calvert

Pratt, John E.

1932 - July 11

Anne Arundel.

Printed by the Government Printer, Ottawa, Ontario, Canada

1963

1963 - 1964

1963 - 1964

1963



1900, MAY

1900 - 1901

1900



Pratt, Mary

1931 - March 25

Montgomery

Smith, Mary

1911 - August 1.

1912 - 1913



Pratt, Mary

1931 - March 23

Montgomery

THE HISTORY OF THE CITY OF BOSTON

FROM THE FIRST SETTLEMENT TO THE PRESENT TIME

BY NATHAN OSGOOD



(See Thomas)

Pratt, Melvin Francis

1931 - September 3

Prince George

(See Wills)

Pratt, Rebecca

1931 - May 6

Anne Arundel

Pratt, Sidney C.

1927 - January 29

Baltimore

1907, Mary

1911 - March 25

1912 - Mary



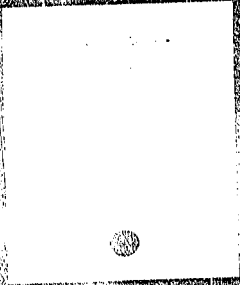


TABLE 1. Mean monthly precipitation (mm) and number of days with precipitation (days) for the 30 yr (1979–98) period. The number of days with precipitation is defined as the number of days with a total precipitation amount greater than 0.2 mm.

Month	1	2	3	4	5	6	7	8	9	10	11	12
Precipitation (mm)	13.6	13.4	13.3	13.4	13.7	14.0	14.0	13.6	13.2	13.3	13.5	13.6
Days with precipitation	10.6	10.4	10.4	10.5	10.7	10.8	10.8	10.6	10.5	10.6	10.7	10.8

where \bar{P} is the mean precipitation over the 30 yr period. The monthly mean precipitation and the number of days with precipitation are shown in Table 1.

The 30 yr period is divided into three 10 yr periods (1979–88, 1989–98, and 1979–98). The mean monthly precipitation over the 30 yr period is 13.5 mm. The monthly mean precipitation over the 10 yr period 1979–88 is 13.7 mm, over the 10 yr period 1989–98 is 13.3 mm, and over the 30 yr period 1979–98 is 13.5 mm. The monthly mean precipitation over the 10 yr period 1979–88 is 13.7 mm, over the 10 yr period 1989–98 is 13.3 mm, and over the 30 yr period 1979–98 is 13.5 mm. The monthly mean precipitation over the 10 yr period 1979–88 is 13.7 mm, over the 10 yr period 1989–98 is 13.3 mm, and over the 30 yr period 1979–98 is 13.5 mm.

The monthly mean precipitation over the 10 yr period 1979–88 is 13.7 mm, over the 10 yr period 1989–98 is 13.3 mm, and over the 30 yr period 1979–98 is 13.5 mm. The monthly mean precipitation over the 10 yr period 1979–88 is 13.7 mm, over the 10 yr period 1989–98 is 13.3 mm, and over the 30 yr period 1979–98 is 13.5 mm.

The monthly mean precipitation over the 10 yr period 1979–88 is 13.7 mm, over the 10 yr period 1989–98 is 13.3 mm, and over the 30 yr period 1979–98 is 13.5 mm.

The monthly mean precipitation over the 10 yr period 1979–88 is 13.7 mm, over the 10 yr period 1989–98 is 13.3 mm, and over the 30 yr period 1979–98 is 13.5 mm.

The monthly mean precipitation over the 10 yr period 1979–88 is 13.7 mm, over the 10 yr period 1989–98 is 13.3 mm, and over the 30 yr period 1979–98 is 13.5 mm.

The monthly mean precipitation over the 10 yr period 1979–88 is 13.7 mm, over the 10 yr period 1989–98 is 13.3 mm, and over the 30 yr period 1979–98 is 13.5 mm.

The monthly mean precipitation over the 10 yr period 1979–88 is 13.7 mm, over the 10 yr period 1989–98 is 13.3 mm, and over the 30 yr period 1979–98 is 13.5 mm.

The monthly mean precipitation over the 10 yr period 1979–88 is 13.7 mm, over the 10 yr period 1989–98 is 13.3 mm, and over the 30 yr period 1979–98 is 13.5 mm.

The monthly mean precipitation over the 10 yr period 1979–88 is 13.7 mm, over the 10 yr period 1989–98 is 13.3 mm, and over the 30 yr period 1979–98 is 13.5 mm.

(See Thomas)

Pratt, Melvin Francis

1951 - September 2

Prince George

(See Wills)

Pratt, Rebecca

1931 - May 6

Anne Arundel

Pratt, Sidney C.

1927 - January 29

Baltimore

Pratt, Susie E.

1926 - September 21

Talbot

Pratt, Thomas A.

1931 - July 9

Allegany

Pratt, Veroniou D.

1932 - September 10

Howard

Pratt, Dr. W.T.

1931 - December 16

Montgomery

Pratt, Walter
Gardiner

1928 - June 4

Cecil

Pratt, William

1927 - February 9

Calvert

Pratt, Wm. Thomas

1928 - September 25

Queen Anne

Pratt, Winnie

1931 - May 8

Baltimore

Prattis,

1925 - October 7

Dorchester

Prattis, Eliza

1933 - February 4

Caroline

Prattis, Isaac
Thomas

1933 - May 13

Caroline

Prattis, John T.

1933 - October 21

Caroline

Prattis, John Wesley

1924 - July 13

Caroline

Prattis, Julia A.

1989- March 18

Caroline

Prattis, Lida

1987 - July 2

Dorchester

Prattis, Lillian Lee

1927 - January 27

Caroline

W. W. 18, Sherman

1932 - March 14

Caroline

Prattis, Tamsey
Janey

1932 - September 9

Caroline

Prattis, Tilghman

1933 - February 16

Caroline

Pray, George R.

1930 - July 10

Anne Arundel

1934 - Jan. 3

Worcester

Predeaux, Mary

1926 - October 27

Worcester

**Proese, Virginia
Inez**

1925 - January 10

Baltimore

Proble, Elmer T.

1926 - September 26

Baltimore

Preble, Mae Letitia

1927 - March 12

Montgomery

Prechtel, Ida L.
Gardner

1932 - June 20

Anne Arundel

Prechtel, Mary Anna

1928 - October 8

Baltimore

Prechtel, Mary
Virginia

1929 - June 28

Anne Arundel

Prodo, Lennie

1924 - Feb. 11

Wagoner

Prede, Sidney

1989 - February 17

Worcester

Prebow, Harley

1925 - December 10

Worcester

**Free, Carry M.
Jackson**

1924 - June 24

Wicomico

Program, Paul Jr.

1933 - October 10

Cecil

Preis, Milton Leonard

1926 - September 2

Carroll

Prell, Charles C.

1925 - November 24

Gerroll

Preller, Sister
Mary Sigbert

1933 - March 11

Baltimore

See Sister



Presbery,

1984 - March 9

Harford

Presberry, Emma

1928 - January 1

Harford

Presberry, John M.

1933 - April 2

Harford

Presberry, Martha
E.

1930 - March 15

Harford

Presberry, Robert

1928 - March 24

Harford

Presberry, Sarah E.

1928 - May 10

Harford

Presburry, John E.

1933 - November 30

Harford

Presbury, Angus

1925 - June 11

Harford

Freebury, Cleveland

1931 - September 12

Harford

Presbury, Eliza I.

1984 - September 22

Baltimore

Freebury, Emma C.

1925 - November 6

Harford

Presbery, George
Robert

1925 - February 15

Harford

Presbury, James W.

1928 - July 22

Montgomery

Presbury, Robert
Alexander

1931 - December 1.

Montgomery

Presbury, Wilfred
H.

1929 - August 15

Harford

Preschell, Mary E.

1928 - April 1

Cecil

Prescott, Alexander
Fullerton

1932 - March 15

Montgomery

Prescott, Edith
Kellogg

1989 - November 7

Montgomery

Pregraves, Dorothy
Lutritia

1925 - September 4

Washington

Presley, Mary E.

1929 - April 8

Prince George

Press, Gertie

1928 - April 23

Baltimore

Froebel, Mary
Virginia

1929 - June 28

Anne Arundel

Prede, Lennie

1924 - Feb. 11

Worcester

Fredo, Sidney

1989 - February 17

Worcester

Prebow, Hurley

1925 - December 10

Worcester

Free, Carry M.
Jackson

1924 - June 24

Woomioo

Program, Paul Jr.

1938 - October 10

0011

Preis, Milton Leonard

1926 - September 2

Carroll

Proll, Charles G.

1925 - November 24

Carroll

**Preller, Sister
Mary Sigbert**

1933 - March 11

Baltimore

See Sister

Presbery,

1984 - March 9

Harford

Presberry, Emma

1928 - January 1

Harford

Presberry, John M.

1933 - April 2

Harford

**Presberry, Martha
E.**

1930 - March 15

Harford

Presberry, Robert

1928 - March 24

Harford

Presberry, Sarah E.

1928 - May 10

Harford

Presburry, John E.

1933 - November 30

Harford

Presbury, Amos

1925 - June 11

Harford

Presbury, Cleveland

1931 - September 12

Warford

Freebury, Eliza I.

1924 - September 22

Baltimore

Presbury, Emma C.

1925 - November 6

Harford

Presbery, George
Robert

1925 - February 15

Harford

Presbury, James W.

1928 - July 22

Montgomery

**Presbury, Robert
Alexander**

1931 - December 1.

Montgomery

Preis, Milton Leonard

1926 - September 2

Carroll

Prell, Charles C.

1985 - November 24

Corroll

**Preller, Sister
Mary Sigbert**

1933 - March 11

Baltimore

See Sister

Prasbery,

1984 - March 9

Harford

Presberry, Emma

1929 - January 1

Harford

Presberry, John M.

1933 - April 2

Harford

Prenberry, Martha
E.

1930 - March 15

Harford

Presberry, Robert

1928 - March 24

Harford

Presberry, Sarah E.

1928 - May 10

Harford

Presburry, John E.

1933 - November 80

Harford

Presbury, Amos

1925 - June 11

Harford

Presbury, Cleveland

1931 - September 12

Warford

Presbury, Eliza I.

1984 - September 28

Baltimore

Presbury, Emma C.

1925 - November 6

Harford

Presbery, George
Robert

1925 - February 15

Harford

Presbury, James W.

1928 - July 22

Montgomery

Presbury, Robert
Alexander

1931 - December 1.

Montgomery

Prasbury, Wilfred
H.

1929 - August 16

Harford

Preschell, Mary E.

1928 - April 1

Coil

Prescott, Alexander
Fullerton

1932 - March 15

Montgomery

Prescott, Edith
Kellogg

1929 - November 7

Montgomery

Preagraves, Dorothy
Lutritia

1928 - September 4

Washington

Presley, Mary E.

1929 - April 8

Prince George

Presse, Gertie

1928 - April 23

Baltimore

Pressor, Mary M.

1928 - October 3

Frederick

Presberry, Martha
E.

1930 - March 15

Harford

Presberry, Robert

1928 - March 24

Harford

Prebony, Sarah W.

1928 - May 10

Harford

Presburry, John E.

1933 - November 20

Harford

Presbury, Amous

1928 - June 11

Harford

Prenbury, Cleveland

1931 - September 12

Warford

Presbury, Eliza I.

1984 - September 22

Baltimore

Presbury, Emma C.

1925 - November 6

Harford

Presbery, George
Robert

1925 - February 15

Harford

Freebury, James W.

1928 - July 22

Montgomery

Presbury, Robert
Alexander

1931 - December 1.

Montgomery

Presbury, Wilfred
H.

1929 - August 15

Harford

Preschell, Mary E.

1928 - April 1

Cecil

Prescott, Alexander
Fullerton

1932 - March 15

Montgomery

Prescott, Edith
Kellogg

1989 - November 7

Montgomery

Pregraves, Dorothy
Lutrin

1920 - September 4

Washington

Presley, Mary E.

1929 - April 8

Prince George

Press, Gertie

1928 - April 23

Baltimore

Pressor, Mary M.

1928 - October 3

Frederick

Pressler, Frederick
P.

1928 - March 26

Baltimore

Pressman, Catherine
Elizabeth

1927 - August 7

Allegany

Fressman, Henry

1930 - November 25

Allegany

Pressman, John

1951 - January 18

Allegany

Pressman, Benjamin
C.

1928 - October 18

Carroll

Prestman, Frank

1931 - April 16

Prince George

Preston,

1933 - June 20

Cecil

Preston, Albert F.

1932 - July 16

Baltimore

Preston, Alice C.

1929 - March 8

Harford



Preston, Annie
Pearson

1927 - March 13

Allegheny

Preston, Celia H.

1924 - Jan. 25

Harford

Preston, Charles
Francis Capt.

1931 - May 19

Baltimore

Preston, Christine

1984 - Feb. 20

Charles

Preston, Clinton

1929 - July 19

Harford

Preston, Cora Alice

1924 - September 17

Allegany

Preston, Cora G.

1925 - March 23

Harford

Preston, Dennis

1924 - May 29

Allegany

Preston, Edith I.

1924 - Feb. 12

Harford

Prenton, Eliza J.

1926 - January 9

Harford

Preston, Elizabeth

1926 - May 2

Harford

Preston, Frances O.

1933 - January 5

Harford

Preston, Francis K.

1929- December 6

Prince George

Preston, Freddie

1928 - December 28

Queen Anne

Preston, George

1933 - February 18

Cecil

Preston, George M.

1925 - August 13

Coil

Preston, George M.

1932 - January 19

Anne Arundel

Preston, Harry Jr.

1924 - January 17

Allogany

Preston, Helena M.

1926 - March 15

Coil

Pranton, Irene

1989 - January 3

Washington

Preston, James
Harry

1987 - April 26

Harford

Preston, John G.

1925 - July 10

Harford

Preston, John Thos.

1938 - April 1

Allegany

Preston, John W.

1924 - April 4

Allegany

Preston, John
Wesley

1925 - February 12

Baltimore

Preston, Harry N.

1938 - March 24

Frederick

Preston, Ida

1932 - January 21

Harford

Preston, Isaac

1929 - August 20

Harford

Preston, Jacob

1929 - June 2

Dorchester

Preston, James Henry

1928 - August 23

Carroll

Preston, Mary
Elizabeth

1933 - March 11

Harford

WILSON, Mary

Elizabeth

1932 - April 6

Washington

Preston, Mary George

1927 - March 14

Baltimore

Preston, Mary V.

1933 - May 20

Harford

Prenton, Oliver

1933. - February 20

Baltimore

Preston, Oliver J.

1931 - August 3

Prince George

Preston, Peter

1985 - March 27

Allegany

Preston, Robert H.

1932 - August 6

Prince George

Preston, Robert
Stanley

1932 - December 4

Harford

Preston, Wesley S.

1928 - March 9

Harford

Preston, William L.

1931 - August 1

Allegany

PRETTYMAN, ARNA E.

1930 - March 2

Caroline

Prettyman, Cornelia
G.

1932 - October 11

Caroline

Prettyman, Henry

1931 - January 18

Howard

Prettymen, John

1942 - June 6

Carroll

Kenneth

1932 - April 14

Wicomico

Pretyman, Louis
O.

1930-Aug 16

Woomoo

Prettyman, Rolph Jr.

1927 - September 26

Worcester

Prettyman, William H.

1933 - June 7

Woomioo

Pretzsch, Laura M.

1933 - May 28

Baltimore

Preu, Frederick

1927 - December 21

Baltimore

Prevail, Katharyan B

1926 - January 16

Montgomery

Prevas, Gregorios

1924 - March 22

Harford

Prevelich, Joe

1989 - July 18

Frederick

Price,

1924 - April 29

Baltimore

Price,

1925 - July 7

Cecil

Price,

1925 - September 1

Baltimore

Price,

1925 - March 30

Allegany

Price

1928 - AUGUST 7

Caroline

Price,

1929 - September 1

Wicomico

Price,

1931 - May 27

Talbot

Price,

1932 - November 8

Kent

Price,

1931 - February 10

Frederick

Price, Achuan

1931 - July 5

Baltimore

Price, Agnes Estelle

1927 - July 20

St. Mary's

Price, Agnes Marie

1930 - June 3

St. Mary's

Price, Alfred

1928 - February 16

Frederick

Price, Alice

1926 - March 16

Anne Arundel

Price, Alice Butler

1931 - July 5

Caroline

Price, Alice Lee

1928 - August 18

Marford

Price, Alonza
Hoffman

1928 - April 30

Wicomico

Price, Alton

1928 - August 14

Wicomico

Price, Amanda J.

1984 - July 31

Baltimore

Price, Andrew J.

1925 - December 10

Ceel

Price, Anna

1931 - July 22

Somerset

Price, Annie E.

1928 - October 8

Cecil

Price, Anna Mary

1924 - May 20

Washington

Price, Annie E. W.

1927 - May 3

Cecil

Price, Annie L.

1929 - March 13

Baltimore

Price, Augusta

1924 - March 23

Kent

Price, Augusta Logs

1927 - January 26

Queen Anne

Price, Benjamin

1984 - Dec. 19

0011

Price, Benjamin
T.

1925 - May 18

Frederick

Price, Bortha K.

1929 - August 10

Somerset

Price, Bertie

1932 - November 10

Somerset

Price, Boogie

1932 - December 27

Allegany

Price, Blanche

1938 - January 20

Allogny

Price, Casper David

1928 - August 12'

Queen Anne

Price, Charles

1920 - July 8

Coil

Price, Charles

1927 - June 15

Talbot

Price, Charles H.

1031 - March 28

Somerset

Price, Charles James

1932 - November 25

Allegany

Price, Charles L.

1933 - February 7

Frederick

Price, Charles S.
Sr.

1930 - October 16

Cecil

Price, Charlie H.

1932 - March 25

Baltimore

Price, Charlotte
Owings

1924 - March 9

Baltimore

Price, Clifford W.

1931 - February 4

Warford

Price, Daisy Elliott

1928 - August 1

Garrett

Price, David E.

1929 - October 28

Harford

Price, Earl Sterling
Walker

1989 - July 13

Montgomery

Price, Edne

1933 - January 2

Dorchester

Price, Edward H.

1929 - June 7

Caroline

Frice, Edward M.

1933 - September 6

Alloy, any

Price, Elizabeth

1925 - May 8

Talbot

Price, Elizebeth

1927 - January 15

Worcester

Price, Ella Bosley

1926 - June 1

Baltimore

Price, Ella
Cantwell

1929 - December 14

Cecil

Price, Ella L.

1931 - May 3

Harford

Price, Ella Roynton

1924 - August 6

Baltimore

Price, Elizabeth

1032 - September 14

Worcester

Price, Evan M.

1924 - April 26

Baltimore

Price, Florence

1932 - October 9

Worcester

Price, Ernest

1931 - August 16

Frederick

Price, Ernest Gilbert

1930 - March 31

Warroll

**Price, Ernest
Sterling**

1929 - November 21

Queen Anne

Prica, Francesa M.

1989 - January 13

Talbot

Price, Francis

1927 - December 14

Harford

Price, Francis T.

1929 - December 1

St. Mary's

Price, Frederick

1924 - March 18

Charles

Price, George

1928 - August 2

Anno Arundel

Price, George

1933 - May 4

Anne Arundel

Frico, George

1932 - September 2

Anne Arundel

Price, George B.

1931 - May 17

St. Mary's

Frioe, Geo. H.

1934 - April 21

Somerset

Price, George
Ellsworth

1933 - November 14

Wicomico

Price, Gertrude

1927 - July 1

Frederick

Price, Grant Wilson

1932 - May 112

Talbot

Price, Harry

1928 - May 1.

Ce011

Price, Harry E.

1930 - February 20

Coil

Price, Harry
Filmore

1926 - September 21

Coil

Price, Mattie Lurty

1932 - January 18

Queen Anne

Price, Henrietta E.

1929 - February 23

Talbot

Price, Henry

1926 - October 11

St. Mary's

Price, Henry A.

1927 - November 6

Allegany

Price, Herbert

1930 - June 18

Talbot

Price, Herbert Dickey

1930 - March 7

Allegany

Price, Hope Teresa

1933 - July 18

St. Mary's

Price, Ica G.

1925 - July 2

Harford

Price, Isaac L.

1931 - March 25

Woomioo

Price, Isaac M.

1925 - October 10

Baltimore

Price, Isaac T.

1924 - Feb. 10

Cecil

Price, J. Samuel.

1928 - May 19

Worcester

Price, Jacob Henry

1927 - August 21

Carroll

Price, James

1925 - January 2

Wicomioo

Price, James

1925 - March 12

Baltimore

Price, James

1931 - January E

Talbot

Price, James E.

1928 - August 27

Carroll

Price, James
Edward

1933 - December 11

St. Mary's

See Dent

Price, James Henry

1929 - December 26

Baltimore

Price, James

Marshall

1931 - May 24

Allegheny

Price, James Perry

1930 - March 1

Kent

Price, James S.

1927 - January 1

Montgomery

Price, Jennie

1933 - October 26

Worcester

Price, Jenny

1930 - September 19

Allegany

Price, Jennie R.

1933 - May 10

Baltimore

Price, John

1930 - March 30

Somerset

Price, John

1930 - August 26

Allegany

Price, John

1933 - February "

Talbot

Price, John

1930 - May 30

Allegany

Price, John C.

1929 - January 19

Cecil

Price, John E.

1928 - January 23

Allegany

Price, John Elias

1926 - January 18

Montgomery

Price, John Hyland

1931 - March 8

Cecil

Price, John T.

1938 - September 28

Montgomery

Price, John W.

1928 - January 16

Allogany

Price, John W.

1931 - October 25

Washington

Price, John W.

1938 - October 17

Queen Anne's

Price, Joseph

1927 - April 11

Queen Anne

Price, Joseph

1927 - May 10

Coal

(See Przybyzowski,
Joseph)

Priou, Joseph Henry

1931 - June .26

Worcester

Price, Joseph L. C.

1928 - April 24

Washington

Price, Joseph Ridley

1926 - December 6

St. Mary's

Prion, Joseph W.

1933 - January 18

Queen Anne

Price, Julia

1932 - November 23

St. Mary's

Price, Julia
Johnson

1924 - October 3

Anne Arundel

Price, Julia Jones

1929 - September 17

Charles

Price, June Elaine

1928 - May 6

Washington

Price, Katherine
V.

1929 .. September 5

Queen Anne

Price, Laura A.

1938 - April 27

Harford

Price, Laura
Griffin

1932 - May 17

Queen Anne's

Price, Laura S.

1933 - October 8

Queen Anne

Price, Levin J.

1984 - April 1:

Worcester

Price, Lilly C.

1926 - April 29

Baltimore

Price, Linda W.

1932 - November 22

Coil

Price, Louis Bacon

1930 - June 23

Baltimore

Price, Lucy

1931 - July 20

Anne Arndel

Price, Lucy Luella

1929 - July 27

Frederick

Price, Maranda .r.

1925 - February 27

Talbot

Price, Martha
Elizabeth

1933 - May 29

Kent

Price, Mary

1934 - April 21

Kent

Price, Mary Alice

1925 - December 16

Allegany

Price, Mary
Catherine

1924 - Nov. 6

Kent

Price, Mary Catherine

1932 - December 14

Frederick

Price, Mary Ellen

1933 - August 27

Prince George

Price, Mary Ethel
1930 - January 21
Frederick

Price, Mary H.

1932 - March 12

Cecil

Price, Mary O.

1924 - April 11

Frederick

Price, Mary Virginia

1932 - September 2

Baltimore

Price, Maurice

1932 - December 28

Garrott

Price, Mildred Ellen

1924 - March 18

Allegany

Price, Mildred Lee

1928 - December 4

Worcester

Price, Milfred

1925 - June 19

St. Mary's

Price, Milton W.

1938 - January 1

Queen Anne

Price, Mollie
Catherine

1928 - October 27

Talbot

Price, Nancy

1929 - April 27

Wisconsin

Price, Ola

1926 - August 13

Harford

Price, Oliver L.

1928 - January 3

Carroll

Price, Oswald

1929 - March 10

Carroll

Price, Owen

1987 - November 15

Allegany

Price, Patrick
Blun

1989- June 30

Garroll

Price, Pauline

1924 - Aug. 25

Frederick

Price, R. Oliver

1927 - March 24

Baltimore

Price, Rachael
Virginia

1932 - May 26

Washington

Price, Ralph
McCoy

1930 - January 31

Coil

Price, Rebecca

1928 - November 18

Carroll

Price, Rebecca

Aiora

1933 - June 5

Harford

Price, Richard F.

1929 - June 3

Talbot

**Price, Robert
Armstrong**

1926 - November 12

Cecil

Frico, Robert N.

1954 - June 22

Dorchester

Price, Robert
Vernon

1930 - April 6

Montgomery

Price, Rosa Ann

1928 - September 26

St. Mary's

Price, with tax

1971 - 1970 2

and 1970 1

Price, Sallie

1929 - July 21

Harford

Price, Samuel

1926 - August 13

Howard

Price, Samuel F.

1928 - April 29

Queen Anne

Price, Sara E.

1928 - February 1

Harford

Price, Sarah

1931 - July 8

Talbot

Price, Sarah E.

1928 - November 18

Carroll

Price, Sarah W.

1927 - March 1:5

Montgomery

Price, Sophia Louise

1929 - August :

Washington

Price, Soulder

1930 - October 28

Talbot

Price, Susan

1930 - June 18

Carroll

Price, Sylvester
Stephen

1934 - April 14

Kont

Price, Sylvia

1931 - April 18

Talbot

Price, Thelma
Virginia

1925 - May 16

Allegany

Price, Thos. B.

1925 - January 10

Dorchester

Price, Thomas
Emory

1933 - May 19

Harford

Price, Thomas
Gilbert

1938 - April 7

St. Mary's

Price, Thomas H.

1925 - January 31

Caroline

Price, Thos. Munther

1924 - Feb. 25

Harford

Price, Thomas J.

1938 - April 17

Talbot

Price, Thomas John

1931 - June 17

Allogany

Price, Thomas S.

1929 - December 17

Dorchester

Price, Turner

1930 - December 11

St. Mary's

Price, Virginia
Jane

1929 - March 10

Baltimore

Prica, Virginia
Mandarina

1926 - March 13

Garrott

Price, Virginia
Wilson

1926 - January 3

Caroline

Walter F.

1933 - August 24

Queen Anne

Price, Wesley George

1933 - March 21

Kent

Price, Wm.

1928 - July 21

Wicomioo

Price, William

1924 - March 15

St. Mary's

Price, Wm. Edw., Jr.

1933 - December 31

Kent

Price, William H.

1929 - March 24

Washington

Price, Wm. Henry

1926 - March 25

Baltimore

Price, William J.

1985 - April 8

Dorchester

Price, William J.

1928 - September 14

Queen Anne

Price, William
Jefferson

1924 - Sept. 2

Talbot

Price, Wm. Lorie

1932 - February 2

Somerset

Price, William M.

1926 - March 18

Wicomico

Price, William W.

1931 - January 19

Talbot

Price, William
Ringo, d

1930 - March 19

Kent

Price, William W.

1926 - November 1

Talbot

Prichard, Enoch
H.B.

1924 - June 17

Allegany

Prichard, Lavell

1927 - June 4

St. Mary's

Prichard, Mary Ann

1932 - March 16

Allegheny

Prichard, Thomas
Wallace

1926 - April 28

Frederick

Prichard, Walter

1930 - February 19

Frederick

Prichett, John W.

1932 - October 18

Queen Anne

Wilson

1932 - April 18

Worcester

Priddow, James

1924 - March 21

Worcester

Priddow, Julia

1934 - March 28

Worcester

Pridow, Pearl

1925 - June 27

Worcester

Priebe, Arthur

1933 - November 23

Montgomery

Priebe, Herman, Sr.

1933 - July 20

Montgomery

Priest, Edward F.

1924 - May 19

Allogany

Priest, Sarah I.

1933 - April

Montgomery

Priester, Wm.

1927 - December 21

Baltimore

Prigel, Wilhelmina A.

1932 - February 14

Baltimore

Prigg, Clara L.C.

1931 - December 3

Harford

Prigg, Morgan

1924 - Dec. 12

Prince George

Prigg, Oscar

1930 - April 6

Harford

Prinsner, Frank
John

1928 - April 21

Garrett

Primm, Wm. A.

1933 - December 23

Anne Arundel

Primross, Frank

1930 - December 29

Baltimore

Prince, Eva

1928 - November 20

Carroll

Prince, Johanna M.

1987 - April 9

Baltimore

Prince, Martha
Virginia

1928 - January 27

Howard

Prince, Sarah T.

1931 - July 30

Harford

Pring, Henrietta

1924 - Sept. 13

Howard

Printz,

1928 - July 30

Allegany

Prins, Elisabeth
Barbara

1931 - September 19

Prince George

Priol, Frances

1938 - March 23

Baltimore

Prior, Wilhelmine

1933 - October 5

Baltimore

Priscoe, Mary

Priscoe

1925 - March 18

Baltimore

Pritchard, Frances

1933 - February 4

Baltimore

Pritchard, Harry
Worley

1924 - AUG. 1

Coil

Pritchard, Louisa

1930 - July 18

Talbot

Pritchard, Morgan E

1926 - December 11

Harford

Pritchard, Phebe

1928 - October 29

Baltimore

Pritchard, Richard
H.

1911 - December 14

Talbot

Pritchard, Sadie

1932 - August 5

Wisconsin

Pritchard, Virginia
D.

1930 - December 23

Allegany

Pritchard, William B

1932 - June 6

Somerset

Pritchett, John

1931 - November 10

Queen Anne

Pritchett, Agnes

1925 - March 9

Dorchester

Pritchett, Andrew

1930 - July 16

Worcester

Pritchett, Anna

1933 - May 18

Caroline

Pritchett, Annie
 Luella

1930 - January 26

Caroline

Pritchett, Croetta

1930 - March 21

Dorchester

Pritchett, Charles
G.

1925 - November 2

Dorchester

Pritchett, Charles
Moon

1931 - January 13

Caroline

Pritchett, Clarence

1933 - January 10

Dorchester

Prichett, Elizabeth

1926 - October 14

Dorchester

Pritchett, Ella M.

1933 - July 19

Dorchester

Pritchett, Flossie

May

1927 - November 11

Caroline

Pritchett, Francis
L.

1936 - July 18

Dorchester

Pritchett, George M.

1926 - April 3

Carroll

Pritchett, Glenber

1925 - April 27

Dorchester

Pritchett, Henry
Clay

1927 - May 14

Dorchester

Pritchett, Howard R

1926 - November 20

Caroline

Pritchett, John L.

1927 - June 10

Dorchester

Pritchett, Josiah

1933 - May 8

Dorchester

Pritchett, Zeniah

1930 - July 23

Caroline

Fritchett, Lila

1926 - September 19

Dorchester

Fritchett, Mirtha

1926 - March ?

Talbot

Pritchett, Maurice
Solina

1990 - May 20

Dorchester

**Fritchett, Merrill
Hays**

1929 - September 12

Dorchester

Pritchett, Merritt
Roosevel

1931 - September 5

Dorchester

Pritchett, Mason
Edward

1924 - April 1

Dorchester

Pritchett, Philip

1924 - August 11

Caroline

Pritchett, Ralph
Birchard

1927 - November 28

Caroline

Pritchett, Rosa

1925 - May 2

Caroline

Pritchett, Rene V.

1931 - November 6

Baltimore

Pritchett, Sarah J.

1929 - February 23

Caroline

Pritchett, Sophia A.

1931 - March 19

Caroline

Pritchett, June

1932 - August 83

Talbot

Pritchett, Thomas
Indiana

1934 - Oct. 19

Dorchester

**Pritchett, Thomas
S.**

1931 - August 27

Dorchester

Pritchett, Thomas V.

1933 - September 8

Caroline

Fritchett, William

1931 - November 4

Dorchester

Pritchett, William

1927 - July 16

Dorchester

Pritchett, William
Edward

1924 - April 11

Caroline

Pritchett, Wm. F.

1925 - January; 21

Dorchester

Pritchett, Wm. H. H.

1927 - January 9

Dorchester

Pritchett, Woodford

1933 - March 14

Anne Arundel

Pritto, William
James

1926 - June 17

Worcester

Pritts, Francis

1931 - February 1

Garrett

Pritts, George
Richard

1929 - January 24

Allegany

Pritts, Harriet
Elizabeth

1931 - March 29

Garrett

Prober, Philipp
Arthur

1931 - October 23

Frederick

Prochownik, Annie

1929 - January 7

Anne Arundel

Prockter, Tuse

1930 - April 28

Washington

Procopio, Gregory

1933 - September 18

Baltimore

Procter, Daniel

1933 - August 5

Baltimore

Procter,

1924 - Dec. 24

Prinoo George

Proctor,

1930 - February 7

Prince George

Proctor, Aocher S.

1925 -- July 11

Montgomery

Proctor, Alex

1931 - April 8

Prince George

Proctor, Ambrose

1930 - May 16

Montgomery

Prestor, Anna T.

1929 - February 22

Harford

Procter, Annie
Piccola

1925 - August 31

Prince George

Proctor, Carl
Augustine

1929 - November 15

Prince George

Proctor, Carrie

1930 - December 8

Charles

Proctor, Charles D.

1938 - August 11

Frederick

Proctor, Christiana

1925 - May 14

Prince George

Preator, Clara

Madeline

1929 - January 13

Prince George

Proctor, Dorothy
Cecilia

1989 - March 19

Prince George

Proctor, Elizabeth

1925 - November 24

Frederick

Proctor, Elisabeth

1930 - July 20

Charles

Proctor, Elizabeth

1928 - June 21

Prince George

Proctor, Eva May

1929 - August 22

Frederick

Proctor, Fannie M.

1931 - April 19

Prince George

Proctor, Florence

1925 - February, 11

Carroll

Proctor, Florence

1929 - February 13

Charles

Proctor, Frances S.

1931 - June 1st

Dorchester

Proctor, Garfield
Irving Ralph

1927 - August: 1

Frederick

Proctor, George C.

1931 - August 13

Harford

Proctor, George H.

1926 - February 26

Charles

Proctor, George E.

1933 - February 24

Coil

**Proctor, George
Warren**

1929 - November 2

Charles

Proctor, Georgiana

1926 - February 11

Frederick

Proctor, Hazel

1933 - January 25

Prince George

Proctor, Helen C.

1930 - May 11

Cecil

Proctor, Henry

1926 - December 30

Worcester

Proctor, Ida May

1930 - November 29

Harford

Proctor, James A.

1932 - March 5

Prince George

Proctor, James
Alexander

1933 - November 22

Charles

Proctor, James C.

1925 - November 8

Princeton George

Proctor, Jennie

1933 - March 17

Charles

Proctor, John

1931 - November 29

Montgomery

Proctor, John E.

1927 - August 10

Charles

Proctor, John Sedgewick

1924 - Nov. 15

Prince George

Proctor, Laura
Gertrude

1926 - April 28

Marford

Proctor, Loretta Fay

1926 - March 3

Anne Arundel

Proctor, Marcellus

1934 - March 24

Dorchester

Proctor, Margaret
Offortt

1931 - January 18

Montgomery

Proctor, Martin
Phillip

1989- April 28

Prince George

Proctor, Mary

1926 - March 30

Charles

Proctor, Mary

1932 - March 13

Prince George

Proctor, Mary B.

1928 - March 25

Prince George

Proctor, Mary E.

1926 - August 7

Charles

Procter, Mary Ellen

1931 - January 13

Prince George

Proctor, Mary L.

1928 - July ?

Charles

Preator, Mary
Louise

1930 - July 12

Prince George

Proctor, Miley

1926 - February 4

Prince George

Proutor, Octavia

1929- April 29

Prince George

Proctor, Rachael

1928 - April 14

Montgomery

Proctor, Richard
Thomas

1932 - February 3

Charles

Proctor, Rose

1928 - April 24

Charles

Proctor, Sarah

1933 - September 17

Charles

Proctor, Sarah
Euna

1930 - June 24

Prince George

Proctor, Theresa

1932 - October 27

Anne Arundel

**Procter, Thomas
Vanderlear**

1932 - November 18

Prince George

Proctor, William
Arthur

1930 - May 4

Charles

Proctor, William E.

1930 - July 13

Prince George

Proctor, William
Leon

1931 - November 23

Charles

**Proctor, Wm. Percy
Jr.**

1930 - December 16

Charles

Prodoehl, Rita
Theresa

1925 - November 20

Baltimore

Proffit, Thomas A.

1926 - December 12

Baltimore

Prominski, John

1933 - July 23

Anne Arundel

Promttoo,
Josephine

1930 - March 12

Harford

Propes, Clyde
Sandford

1927 - July 8

Prince George

Propper, Edward
Joseph

1928 - December 29

Baltimore

Prosperi, Remo
John

1930 - September 22

Cecil

Propst, Clyde D.

1924 - September 13

Baltimore

Prosser, Emma Jane

1930 - September 30

Baltimore

Prosser, Gertrude D.

1931 - July 15

Baltimore

Prosser, Ida Marieh

1930 - October 16

Prince George

Prosser, Maria B.

1928 - September 19

Allegany

Proud

1927 - May 20

Allogamy

Proud, Howard
Edward

1928 - April 27

Allegany

Prough, George M.

1930 - August 13

Carroll

P. 1
Prough, Georgianna C.

1930 - December 23

Carroll

Prouse, Charles H.

1926 - November 20

Dorchester

Frouse, Ollie M.

1929 - November 25

Dorchester

Prout, Edmund J.

1920 - March 21

Calvert

**Prout, James
Bernard**

1926 - May 5

Prince George

Prout, Joseph

1933 - November 13

Prince George

Prout, Louise R.

1924 - April .

Culvert

Prout, Maria

1924 - April 19

Prince George

Prout, Philip Henry

1928 - October 25

Anne Arundel

Proutt, Martha

1933 - January 5

Culvert

Proutt, Philip O.

1928 .. March 27

Frederick

Prouty, Arthur L.

1927 - August 7

Worcester

Providence

Provard, Richard
Ellwood

1929 - December 28

Washington

Pruett, Dudley

1932 - October 18

1902 - October 18

Harford

Pruett, Major S.

1925 - December 16

Worcester

Pruett, William
Farker

1926 - September 8

Worcester

Pruette, Hazel

Arline

1932 - March 20

Montgomery

1931 - January 31

Carroll

Prugh, Martha J.

1928 - August 27

Carroll

Fruit, Betty I.

1938 - May 8

Worcester

Fruit

1938 - February 14

Worcester

Pruitt, Alton W. Jr

1924 - Nov. 29

Somerset

Fruitt, Annie

Madera

1928 - June 5

Somerset

Pruitt, Charles

1925 - January 1

Wicomico

Fruitt, Chas. Melvi

1928 - June 1st

Somerset

Pruitt, Clara E.

1930 - August 26

Baltimore

Pruitt, Ella
Rebecca

1928 - April 7

Somerset

Pruitt, George W.

1927 - June 14

Somerset

Pruitt, Horace

1927 - August: 3

Somerset

Pruitt, John

1932 - July 10

Harford

Pruitt, John W.

1931 - October 20

Prince George

Pruitt, Leila Watts

1933 - May 29

Worcester

Pruitt, Margaret
Ann

1927 - October 17

Princo George

Pruitt, Randolph W.

1932 - August 24

Wicomico

Pruitt, Rosa E.

1933 - November 82

Worcester

Pruitt, Rosalee
E.

1927 - February 3

Harford

Pruitt, Sallie M.

1933 - September 8

Wicomio

Pruitt, Sarah A.

1927 - June 12

Carroll

1911, March June

1931 - February 4

Comermet

Pruitt, Selby T.

1930 - November 4

Worcester

Pruy, William J.

1928 - July 12

Baltimore

Pry, Aaron C.

1930 - January 8

Carroll

Pry, Amanda

1924 - May 20

Washington

Pry, Thomas J.

1924 - Dec. 7

Washington

Pryor.

1927 - April 17

Frederick

Pryor, Alice Cloe

1933 - September 14

Washington

Pryor, Alice

Josephine

1927 - September 13

Coil

Pryor, Bruce

1987 - March 8

Carroll

Piyor, Catherine

1989 - April 3

Frederick

Pryor, Charles L.

1930 - November 30

Queen Anne

Pryor, Elizabeth

1931 - March 11

Washington

Pryor, Elsie
Victoria

1929 - August 27

Frederick

Pryor, Esther
Margaret

1933 - January 27

Frederick

Pryor, Evalena

1933 - October 9

Prince George

Pryor, Flodie

1926 - October 23

Baltimore

Pryor, Harry

1927 - June 1

Washington

Pryor, Harry M.

1925 - March 19

Cool

Pryor, Isaac

1926 - February 5

Washington

Pryor, James

1924 - Dec. 31

Prince George

Pryor, James E.S.

1926 - February 5

Washington

Pryor, John Alfred

1934 - April 2

Baltimore

Pryor, John W.

1958 - May 28

Washington

Puckett, James C.

1929 - May 6

Anne Arundel

Puokett, Mary Joanna

1926 - July 2

Anne Arundel

Russell, Frederick

1926 - April 18

Baltimore

Pue, John Williamson
Jr.

1927 - December 7

Anne Arundel

Pue, Mary Clarke

1931 - April 21

Howard

Pue, Sallie Moreey

1927 - December 18

Howard

Puffinberger, Mary
Eller

1930 - September 2

Allegany

Pugh,

1927 - February 17

Cecil

Pugh,,

1931 - October 26

Allegheny

Pugh, Adolphus

1931 - August 30

Anne Arundel

**Pugh, Andrew
Jackson**

1929 - September 27

Coil

Pugh, Ann Elizabeth

1929 - January 7

Allegany

Pugh, Ann H.

1951 - March 19

Harford

Pugh, Benjamin
Franklin

1926 - August 21

Montgomery

Pugh, Lieut. Charles
F.

1932 - February 20

Washington

Pugh, Charles M.

1928 - July 19

Prince George

Pugh, Geo. Edw.

1934 .. April 3

Harford

Pugh, George Washington

1933 - August 25

Prince George

Pugh, Helen Sue

1932 - July 28

Anne Arundel

Pugh, John Francis

1933 - July 12

Allegany

Pugh, Lillian Marie

1925 - April 10

Baltimore

Pugh, Robert

1933 - July 2

Anne Arundel

Pugh, Roxan A.

1928 .. March 23

Harford

Pugh, Roxan A.

1928 - March 23

Harford

Pugh, Susie

1931 - February 18

Allegany

Pugh, Thomas O.

1931 - May 23

Prince George

Pugh, Victor Vaughn

1932 - December 29

Ce011

Pugh, Viola Brookett

1931 - January 4

Montgomery

Pugh, Wm. I.

1924 - March 19

Allegany

Pugh, William T.

1926 - June 22

Cecil

Puhalla, Maudie S.

1933 - April 6

Allegany

Puhl, Max Otto

1929 - May 3

Montgomery

Pulcinella, Pasquale

1926 - January 12

Harford

Pulkin, Peter

1924 - December 15

Baltimore

Fuller, Junie

1934 - April 19

Prince George

Pulliam, Ocellin

1928 - April 14

Allegany

Pullen, Gilbert S.

Hugh, Katie

1933 - March 30

Washington

Pullen, Oden M.

1933 - November 3

Montgomery

Puller, Myrtle

1927 - November 4

Washington

Pullott, William
Edward

1924 - Oct. 17

Worcester

Pulley,

1924 - August 27

Anne Arundel

Pulley, Alfred

1938 - October 30

Queen Anne

Pulley, Marie M.

1926 - March 30

Anne Arundel

Pulley, Mildred I.

1930 - December 14

Anne Arundel

Pulley, Wesley

1927 - January 30

Baltimore

Pulliam, Sandy I.

1925 - May 28

Baltimore

Pullman, Mary

1928 - August 13

Cecil

Pully, Mary Et'a

1928 - December 13

Anne Arundel

Pulpus, Harriet.

1929 - March 2

Washington

Pulsfort, Annie C.

1924 - December 5

Baltimore

Puluski, Isaac A.

1929 - January 30

Prince George

Pumphrey,

1928 - January 22

Anne Arundel

Pumphrey,

1928 - January 23

Anne Arundel

Pumphrey, Addison

1938 - October 21

Anne Arndel

Pumphrey, Albert
William

1926 - March 6

Anne Arundel

Pumphrey, Audrey

1926 - December 1.

Anne Arundel

Pumphrey, Charlie R.

1928 - March 12

Anne Arundel

Pumphrey, Columbus

1928 - August 30

Prince George

Pullman, Eltee

1930 - June 28

Baltimore

Pumphrey, Agnes

1933 - January 10

Montgomery

Pumphrey, Ben.
Franklyn

1987 - October 10

Anne Arundel

Pumphrey, Carrie
C. L.

1924 - April 4

Anne Arundel

Pumphrey, Collis C.

1927 - February 4

Prince George



Pumphrey, Ellen Nora

1933 - September 26

1933 - September 26

Montgomery

Pumphrey, Florence
Urbana

1930 - July 24

Howard

Pumphrey, Florence V.

1927 - November 22

Anne Arundel

Pumphrey, Helen
Roman

1935 - March 15

Prince George

Pumphrey, James W.

1930 - December 10

Prince George

Pumpbrey, Joanna
Loretta

1934 - Aug. 7

Montgomery

Pumphrey, John B.

1917 - August 1911

Montgomery

Pumphrey, Julia Anne

1927 - July 28

Anne Arundel

Pumphrey, Lilly
Biron

1931 - May 13

Prince George

Pumphroy, Lucy J.

1925 - July 13

Montgomery

Pumphrey, Maud
Migillian

1927 - April 10

Montgomery

Pumphrey, Mary
Evelyn

1929- March 30

Prince George

Pumphrey, Robert H.

1928 - January 7

Montgomery

Pumphrey, Sedwick T.

1929 - February ?

Anne Arundel

Pumphrey, Thomas
Russell

1931 - December 7

Montgomery

Pumphrey, Thomas W.

1931 - November 15

Anne Arundel

Pumphrey, Upton
Leroy

1926 - June 3

Anne Arundel

Pumphrey, William
Isaac

1925 - January 14

Howard

**Pumphrey, William
Reuben**

1928 - November 4

Montgomery

Punte,

1930 - November 3

Baltimore

Parcell, Charity

1930 - December 1

St. Mary's

Parcell, D.B.

1931 - December 21

Baltimore

Purcell, Dora W.

1984 - March 8

Montgomery

Purcell, Edwena J.

1933 - February 19

Cecil

Purcell, Gilbert L.

1932 - August 27

Prince George

Purcell, James H.

1928 - September 7

Anne Arundel

Purcell, Lillie T.

1927 .. April 21

Woomico

Purcell, Martin J.

1926 - January 20

Harford

Purdham, Kenneth
E.

1927 - March 31

Harford

Purdum, Alma V.

1930 - February 21

Frederick

Purdum, Beatrice
.. .. . K.

1989 - March 9

Carroll

Purdum, Catharine D.

1926 - May 29

Montgomery

Purdum, Emma A.

1933 - December 17

Montgomery

Purdum, John

1930 - October 7

Montgomery

Purdum, Joseph A.

1933 - February 17

Carroll

Purdum, Josiah
Washington

1926 - July 23

Montgomery

**Pardon, Luther
Martin**

1931 - May 31

Montgomery

Purdum, Martha
Brown

1989- May 30

Montgomery

Purdum, Martha Jane

1932 - December 1

Frederick

Pardum, Maurice E.

1925 - July 3

Montgomery

Pardum, Nora E.

1925 - October 23

Montgomery

Purdum, Sarah Edith

1933 - February 12

Montgomery

Purdum, Thomas F.

1925 - January 14

Montgomery

Purdum, Wilford
Greenburg

1930 - September 28

Baltimore

Purdy, John Richard

1932 .. November 15

Prince George

Purdy, Maybelle

1933 - November 22

Frederick

Purdy, Wm. Harrison

1924 - February 3

Anne Arundel

Mr. Purdy, William
Henry

1932 - January 10

Cecil

Purkins

1926 - February 23

Frederick

Parkins, Laura
Edith

1924 - August 15

Anne Arundel

Purkins, Zonie

1925 - March 12

Carroll

Purman, Rose

Mildred

1989- December 2

Montgomery

Purnell,

1925 - June 3

Worcester

Purnell,

1925 - January 20

Cecil

Furnell,

1924 - Jun. 15

Worcester

Purnell,

1926 - September 28

Worcester

Purnell,

1926 - October 20

Worcester

Purnell,

1926 - November 23

Worcester:

Purnell,

1927 - March 29

Talbot

Purnell

1927 - May 26

Worcester

Purnell

1927 - September 3

Worcester

(See Gouldtown)

Purnell,

1931 - July 22

Worcester

Purnell, Baby

1931 - June 4

Worcester

Jurnell,

1933 - June 2

Wicomico

Purnell, Baby

1931 - June 4

Worcester

Purnell, Abbie Ann

1932 - March 29

Washington

Purnell, Ada M.

1929 - August 16

Worcester

Purnell, Addie B.

1931 - August 28

Worcester

Purnell, Agnes W.

1914 - May 19

Cecil

Purnell, Albert

1925 - February 3

Somerset

Purnali, Alfonso

1933 - August 24

Worcester

Purnell, Alvin

1925 - November 12

Woomioo

Furnell, Annie

1931 - May 11

Wicor 100

Purnell, Annie

1924 - June 3

Baltimore

Purnell, Beatrice

1934 - April 7

Worcester

Purnell, Caroline R.

1932 - August 8

Worcester

Purnell, Charles E.

1928 - April 7

Baltimore

Purnell, Charley

1929 - January 10

Worcester

Purnell, Clayton

1933 - April 11

Allegany

Purnell, Dorothy
May

1933 - October 2

Worcester

Purnell, Edward M.

1933 - May 25

Worcester

Purnell, Elizabeth

1924 - July 15

Worcester

Purnell, Elisha W.

1930 - November 12

Worcester

Purnell, Ernest
Frankline

1926 - February 7

Worcester

Purnell, Ethel

1931 - July 19

Worcester

Purnell, Frankson
Priscilla

1930 - December 29

Journal

Purnell, Fred

1927 - February 21

Worcester

Purnell, Gayley S.

1931 - November 20

Worcester

Purnell, Geo.

1925 - December 22

Worcester

Purnell, George

1929 - March 21

Wicomico

Purnell, George
Edward

1924 - July 23

Worcester

Purnell, George H.

1926 - August 29

Worcester

Purnell, George H.

1927 - September 27

Worcester

Purnell, George H.

1928 - March 19

Tullot

Purnell, George W.

1924 - Nov. 18

Woomloo

Purnell, George W.

1932 - July 11

W10 001 00

Furnell, Gordon
Smith

1925 - March 11

Worcester

Purnell, Hannah

1930 - May 28

Kent

Furnell, Hattie A.

1932 - April 30

Worcester

Purnell, Henrietta

1925 - March 7

Worcester

Purnell, Henry R.

1928 - March 12

Worcester

Purnell, Hester A.

1928 - August: 25

Worcester

Purnell, Hester Anna

1924 - Feb. 1st

Dorchester

Purnell, Howard Jr.

1931 - November 1

Worcester

Purnell, Hulda Lidia

1924 - December 25

Caroline

Purnell, Ida May

1926 - May 2

Cecil

Purnell, Irving

1930 - December 27

Worcester

Purnell, J. Robins

1932 - August: 23

Worcester

Purnell, James
Harrison

1927 - May 27

Worcester

Furnell, Jennie
Louisiana

1904 - Oct. 10

Worcester

Purnell, John H.

1932 - February 20

Worcester

Purnell, Julius H.

1927 - April 1

Worcester

Purnell, Katie May

1929 - November 11

Worcester

Purnell, Laura

1929 - January 11

Worcester

Purnell, Laura

1933 - July 28

Somerset

Purnell, Laura

1933 - May 28

Worcester

Purnell, Lemuel H.

1932 - February 7

Worcester

Furnell, Lemuel J.

1929 - February 3

Worcester

Purnell, Letitia

1926 - November 25

Worcester

Purnell, Lillie
Scott

1931 - October 3

Worcester

Purnell, Margarete

1930 - March 11

Worcester

Purnell, Mariah

1927 - January 9

Worcester

Purnell, Martha

1927 - July 31

Worcester

Purnell, Martha

1933 - July 25

Somerset

Furnell, Mary

1925 - April 5

Worcester

Purnell, Mary

1925 - October 29

Worcester

Purnell, Mary

1930 - June 6

Worcester

Purnell, Mary
Andrew

1925 - October 26

Worcester

Purnell, Mary/
Catherine

1926 - January 30

Worcester

Purnell, Mary H.

1926 - February 14

Worcester

Purnell, Mary J.

1924 - June 20

Worcester

Purnell, Mary Jane

1929 - January 10

Worcester

Purnell, Mary M.

1926 - March 1

Wicomico

Parnell, Matilda

1926 - February 9

Somerset

Purnell, Mignon

1930-- Oct 10

Wisculoo

Furness, Flint

1922 - September 15

Worchester



Parnell, Mollie
Elizabeth

1925 - December 1

Washington

Purnell, Monroe

1927 - May 17

Worcester

Purnell, Nancy

Elinubeth

1931 - June 14

Somerset

Purnell, Noah

1924 - June 15

Worcester

Purnell, Norman

1932 - November 5

Anne Arundel

Furnell, Oscar D.

1932 - January; 17

Worcester

Purnell, Queen V.

1926 - August 14

Worcester

Purnell, Robert L.

1928 - October 27

Dorchester

Purnell., Ross Katie

1925 - March 25

Worcester

Purnell, Samuel

1931 - October 1

Anne Arundel

Furnell, Samuel
Edwin

1924 - Dec. 11

Washington

Jurnell, Jewel

1930 - May 2

Worobler

Purnell, Sophia A.

1926 - October 6

Wicomico

Purnell, Susie

1929 - February 5

Worcester

Furnell, Cyrus

Henry

1933 - January 31

Wicomico

Purnell, Theadore

1927 - April 27

Worcester

Purnell, Thelma

1928 - October 27

Worcester

Furnell, Theodore M.

1934 - April 14

Worcester

Purnell, Theodore R.

1928 - November 21

Worcester

Purnell, Thomas H.

1933 - December 9

Worcester

Purnell, Viola

Thelma

1928 - July 3

Worcester

Purnell, W. T.

1928 - February 2

Woomioo

Parnell, Walter

1928 - May 26

Worcester

Purnell, Wm.

1926 - May 30

Wicomico

Purnell, William

1927 - June 25

Anne Arwidel

Purnell, William
Cudger

1929 - March 5

Worcester

Purnell, William
Henry

1931 - April 24

Cecil

Purnell, William
Henry

1938 - August 11

Woomioo

Purnell, Wm.

1930- September 1

Wicomico

Purnell, Zelbert

1985 - December 20

Wicomico

**Parner, Amelia
Katherine**

1928 - October 1

Montgomery

Turner, Ferdinand G.

1924 - November 9

Anne Arundel

Turner, Joshua
Clayton

1933 - January 2

Coil

Furner, Mary Jane

1927 - March 28

Co011

Purper, William

1932 - July 6

Anno Arundel

Purachwitz, Anna
May

1927 - January 28

Prince George

Purves, William H.

1930 - September 17

Carroll

Furvey, Michel Virginia

1933 - September 6

Calvert

Purvey, Rachell

1926 - September 18

Calvert

Purvines, William
Samuel

1924 - March 23

Baltimore

Purvis, William L.

1927 - January 10

Carroll

Puryear, Florine L.

1932 - August 21

Charles

* **Taney**

1928 - January 17

Somerset

(See Townsend)

Pusey,

1931 - July 11

Worcester

Pusey, Albert F.

1933 - December 13

Wicomico

Pusey, Andrew Jackson

1931 - June 29

Worcester

Pusey, Arthur W., Jr.

1932 - October 20

Worcester

Pusey, Azariah C.

1924 - May 24

Somerset

Pusey, Clifford B.

1933 - April 6

Somerset

Pusey, Edwin
Baldwin

1925 - May 27

Somerset

Pusey, Ella
Louvasia

1929 - August 20

Wicomico

**Pacey, Eugenia
McAllen**

1928 - October 21

Somerset

Pusey, Florence
Priscilla

1928 - February 8

Worcester:

Fussy, George H.

1924 - May 26

Worcester

Pusey, George D.

1924 - March 21

Frederick

Pusey, George W.

1933 - August 6

Sole tract

Pusey, Ida Letitia

1926 - September 24

Woomioo

(See Foman)

Pusey, Isaac

1930 - December 28

Worcester

Pusey, Kendal H.

1926 - January 30

Worcester

Pusey, King B.

1925 - June 24

Wicomico

Pusey, Leticia
Jane

1930- April 27

Woomioo

Pusey, Levenia E.

1928 - March 30

Wicomico

Pusey, Levin P.

1926 - March 20

Somerset

Pusey, Margeret M.

1926 - September 18

Wicomico

Pusey, Margaret

1929 - March 5

Woomioo

Pusey, Mary E.

1938 - April 18

Worcester

Pusey, Mary Emma

1930 - March 19

Somerset

Pusey, Mary Frances

1926 - October 23

Worcester

Pusey, Matilda C.

1928 - October 6

Woomioo

Pusey, Nancy E.

1929 - February 24

Worcester

Pusey, Olive B.

1928 - March 15

Wisconsin

Pusey, Priscie

1928 - November 27

Somerset

Pusey, Rebecca H.

1926 - January 17

Worcester

Pusey, Reverdy M.

1931 - May 18

Wicomico

Pusey, Robert A.

1930 - January 31

Somerset

Pusey, Sidney Allen

1931 - March 5

Somerset

Pusey, Thelma F.

1926 - November 24

Wiconioco

Pusey, Theodore
France

1926 - April 24

Somerset

Fusoy, Warren
Harding

1934 - March 19

Washington

Pusey, William A.

1930 - June 20

Caroline

Pusey, William H.

1925 - January 3

Somerset

Pushkin, Samuel

1932 - September 10

Baltimore

Puekac, Stephen

1929 - December 7

Baltimore

Pussler, Martin

1927 - March 30

St. Mury's

Putchar, Cora A.

1932 - August 17

Harford

PUGHAN, Adam Wesley

1933 - July 29

Frederick

Putman, Anna Louise

1934 - July 1

Frederick

Putman, Calvin L.

1929 - January 2

Frederick

Putman, Elmer

1925 - March 26

Frederick

Putman, John Jerome

1931 - April 28

Frederick

Putman, Katherine
Gertrude

1932 - June 19

Frederick

Putman, Noah R.

1925 - November 12

Howard

Putman, Phoebe Ann

1932 - June 7

Frederick:

Putman, William F.

1932 - February 27

Baltimore

Putnam,

1928 - May 10

Anne Arundel

Putnam, Evaline V.

1931 - November 15

Prince George

1925 - May 3
Patnam, Frank

1925 - May 3

Talbot

Putney, George

1926 - February 12

Baltimore

Putney, Martha Jane

1931 - April 29

Baltimore

Putney, Samanlha

1931 - August 27

Baltimore

Putney, Stephen Park

1924 - July 23

Baltimore

Puzzo, Rosarie

1924 - February; 4

Baltimore

Pazrin, Edna

1930 - July 22

Anne Arundel

Pye, Chas. S.

1931 - February 25

Baltimore

Pye, Margaret

1928 - January 6

Charles

Pyo, Margret H.

1925 - January 30

Charles

Pylant, Virginia

1928 - August 11

Baltimore

Pyle, Albert

Francis

1928 - October 24

Carrett

Pyle, Caroline

1927 - October 24

Harford

Pyle, Elisha H.

1928 - March 21

Harford

Pyle, George

1926 - October 9

Cecil

Pyle, Hannah Jana

1927 .. September 10

Prince George

Pyle, Ida D.

1931 - January 4

Baltimore

Pyle, Joseph

1928 . July 1

Harford

Pyle, Joseph M.

1924 - Oct. 5

Harford

Pyle, Lewis A.

1930 - June 29

Prince George

Pyle, Margret Marie

1932 - September 1

Caroline

Pyle, Mary A.

1927 - September 4

Woomico

Pyle, Mary E.

1924 - July 23

Harford

Pyle, Mary Eliza

1926 - March 12

Harford

Pyle, Mary Ellen

1924 - April 4

Harford

Pyle, Martha S.

1924 - Feb. 29

Carroll

1933
1933, Thomas L.

1933 - February 21

Harford

Pyle, William
Carrington

1928 - December 24

Cecil

Pyle, Wilson Boley

1926 - October 17

Harford

Pyles,

1927 - January 2

Prince George'

Pyles, Cleaver P.

1924 - Sept. 29

Garrett

Pyles, Florence W.

1924 - May 30

Montgomery

Miss, Jennie

1938 - March 15

Montgomery

Pyles, John Edwin

1925 - March 18

Prince George

Pyles, John William

1925 - March 25

Garrett

Pyles, Nellie M.

1927 - March 17

Montgomery

Pyles, Wallace R.

1925 - April 5

Prince George

Pylem, Wm. C.

1929 - November 24

Montgomery

Pyles, William H.

1923 - March 23

Montgomery

Pyne, John Page

1926 - October 25

Washington

Pyne, John S.

1929 - April 20

Talbot

Pyner, Alexander

1932 . . March 2

Kent

Pyssil, James

1929 - March 31

Garrett

Lywell, Edward

1930 - June 25

Frederick

Pyrell, Truman

1928 - May 30

Garrett

Lywell, Edwin F.

1930 - September 20

Culvert

Pywell, Elizatoth

1932 - September 28

Prince George

Quale, Agnes Deloria

1933 - September 17

St. Mary's

Quade, Annie May

1924 - Jan. 1

St. Mary's

Grade, Carrie
Paulino

1925 - February 11

St. Mary's

Quade, Herman Alex

1931 - October 3

Anne Arundel

Quade, J. Ollie

1933 - May 23

Charles

Quade, John H.

1928 - October 25

St. Mary's

Quade, John Joseph

1926 - October 21

St. Mary's

Quade, John Morris

1928 - October 19

St. Mary's

Quade, Mary Gertrude

1927 - March 2

St. Mary's

Quade, Richard

Edward

1929 - November 12

St. Mary's

Quade, Robert G.

1933 - September 14

Prince George

Quade, Roland

1928 - December 28

St. Mary's

Quade, Rose
Milburn

1929 - April 27

St. Mary's

Quade, Thomas

1930 - July 22

St. Mary's

(See Burch)

Quade, William
Clinton

1933 - October 3

St. Mary's

Quaid, Martha A.

1929 - April 21

Anne Arundel

Quail, Mary Agnes

1931 - November 20

Prince George

Quails, Blanch

1930 - November 22

Dorchester

.



Quarles, Charley

1927 - August 6

Dorchester

Quails, Elna Mae

1929 - December 17

Dorchester

Quails, Fordy

1928 - September 9

Dorchester

Quails, Harry

1932 - March 8

Dorchester

Quinn, Hugh
William

1926 - March 23

Harford

Quander, Dorothy

1924 - Oct. 27

Prince George

Quander, Mary E.

1931 - April 3

Prince George

1930 - January 22

Montgomery

Quarles, Walter

1926 - May 15

Baltimore

Quarles, Sam

170

Quarry, Alfred Roy

1933 - February 14

Quartley, Carrie E.

1928 - August 5

Anne Arundel

Quast, Augusta

1933 - May 10

Baltimore

Quathamor,

1930 - April 25

Talbot

Quathamer, Frank
Henry

1929 - July 24

Talbot

Quathamer, Fred C.

1933 - August 18

Tilbot

Quattrini, Pacifico

1932 - July 29

Talbot

Cue, Alice

1933 - October 20

Carroll

Queck, Charles C.

1930 - October 19

Coil

Coek, Susannah

1930 - December 28

Coil

Queok, William
Andrew

1928 - September 26

Cecil

Queen,

1925 - February 5

Prince George

Queen, Amelia

1929 - March 20

Anne Arundel

Queen, Amelice
Victoria

1925 - March 8

Baltimore

Queen, Anna

Elizabeth

1926 - February 4

Anne Arundel

Queen, Bernard
Jerome

1917 - August 1

Prince George

Queen, Bernard

O'Donnell

1938 - May 21

Anne Arundel

Queen, Carrie

1925 - January 11

Anne Arundel

Queen, Charles

1925 - February 8

Anne Arundel

Queen, Charles
Edward

1930 - September 28

Prince George

Queen, Cornelia

1930 - August 6

Prince George

Queen, Daniel. T

1924 - Oct. li

Prince George

Queen, Edna

1926 - May 18

Anne Arundel

Queen, Elzic
Asbury

1924 - June 19

Anne Arundel

Queen, Fubeder

1924 - June 24

Arno Arundel

Queen, Francis

1930 - July, 2

Anne Arundel

Queen, Geneva

1930 - July 1

Carroll

Queen, Gladys

1932 - January 13

Anne Arundel

Queen, Glen.

1924 - March 13

Anne Arundel

Queen, Hannah

1925 - August 5

Anne Arundel

Queen, Henrietta
Henson

1933 - March 22

Prince George

Queen, Mizzio

1929 - March 22

Charles

Queen, Ida

1929 - June 16

Anne Arundel

Queen, James

Edward Jr.

1928 - February 8

Prince George

Queen, Jane

1980 - August 12

Anne Arundel

Queen, John Henry

1925 - April 21

Prince George

Queen, John Henry

1929 - November 1

Anne Arundel

Queen, John Oscar

1933 - June 11

Charles

Cuson, Jos.

1926 - August 12

Charles

Queen, Joseph

1930 - April 29

Anno Arundel

Queen, Joseph Earl

1926 - November 26

Charles

Queen, Kat^{ie}

1924 - July 16

Anne Arundel

seen, Leon

1933 - December 2

Anne Arundel

Queen, Louise

1931 - July 12

Anne Arundel

Queen, Lovey Ann

1938 - October 7

Anne Arundel

Cuseen, Mahlon Jr.

1929 - July 31

Anne Arundel

Queen, Martha

1929 - March 27

Charles

Queen, Martha
Elizabeth

1925 - January 20

Charles

Queen, Mary

1929 - January 17

Ann: Arundel

Wagon, Mary A.

1924 - April 7

Prince George

Queen, Mary
Elizabeth

1929 - July 14

Charles

Quon, Mary Howard

1934 - April 1

Howard

Queen, Mary Martha

1928 - July 30

Anno Arundel

Queen, Maryland,

1933 - May 9

Anno Arundel.

Queen, Michael

1972 - May 22

Baltimore

Queer, Monica A.

1927 - March 2

Prince George

Queen, Moses

1933 - November 6

Ann. Arundel

Queen, Myrtle E.

1931 - February 12

Ann^{rs} Arundel

Queen, Nannie

1928 - April 2

Washington

Queen. Noah

1924 - May 24

Antie Arundel

Queen, Rachel Etta

1920 - August 2

Anne Arundel

Queen, Robert Z.

1930 - September 4

Ann Arundel

Queen, Rose

1931 - February

Anne Arundel

Queen, Rose

1931 - January 11

Charles

Queen, Samuel
Henry

1933 - December 7

Anne Arundel

Queen, Simon C.

1924 - August 13

Baltimore

Queen, Stephen

1950 - March 15

Anne Arundel

Queen, Susanna

1924 - May 31

Carroll

Queen, Thomas

1924 - May 21

Anne Arundel

Queen, Thomas, Sr.

1933 - February 4

Prince George

Queen, Viola L.

1932 - November 24

Charles

Queen, Wm.

1929 - January 20

Charles

Queen, William
Hennessy

1929 - May 24

Charles

Queenan, James

1952 - January 9

Anne Arundel

Quain, John W.

1930 - April 29

Cecil

Quelett, George L.

1931 - September 23

Baltimore

Quesada, Rosa Rita

1932 - November 23

Garrett

Quosenberry, Mary
Rosa

1961 - June 25

Baltimore

Cuesinberry,
Chester Issrah

1927 - November 27

Harford

Quick, Anna L.

1933 - December 12

Warford

Quinn, David T.

1920 - January 8

Baltimore

Quirk, Emma

1933 - July 16

Baltimore

Quick, Emma Elizabeth

1927 - May 3

Baltimore

Quick, James R.

1931 - October 21

Frederick

Quick, Luther
Elijah

1933 - October 12

Calvert

Quick, Mary Susannah

1931 - June 7

Kent

Quickley, Alexander

1931 - January 2

Anne Arundel

Quickley, Amanda

1926 - March 29

Anne Arundel

Quickley, Beatrice
Glorine

1927 - August 18

Baltimore

Quickloy, George H.

1926 - October 21

Baltimore

QUICKSILVER
MAY 1950

1950 - APRIL 1951

MILLIONS

Quickly, Annie

1925 - March 10

Baltimore

Quickly, Caesar

1929 - May 10

Baltimore

Quidas, Mary
Josephine

1929 - February 28

Caroline

Quidert, Mary F.

1926 - September 24

Caroline

Quinn, Francis

1928 - January 23

Charles

Quienin, Lillian H.

1938 - January 30

Montgomery

Quigley, Frank

1928 - January 27

Allegany

Quigley, George

1925 - November 16

Baltimore

Quigley, Jno. Thomas

1928 - November 5

Kent

Quigley, Maurice
Anthony

1929 - January 21

Prince George

Quigley, Sarah A.

1924 - Dec. 26

Coil

Quigley, Susanna

1924 - Dec. 31

Kent

Quigley, William
Joseph

1929.- January 18

Prince George

Quill, Dora A.

1928 - February 12

Prince George

Quillan, Edith
May

1930-- June 2

Wiconico

Quillen, Albert J.

1933 - March 3

Worcester

Quillen, Charles B.

1932 - June 18

Worcester

Quillen, Charley

1930 - September 23

Caroline

Quillen, Emma A.

1931 - November 20

Worcester

Quillen, Helon E.

1925 - April 2

Queen Anne

Guillon, James H.

1934 - March 13

Wichita

Quillon, John W.

1928 .. November 18

Dorchester

Quillen, Mary
Catherine

1930 - April 31

Worcester

Quillen, Raymond

1931 -- March '7

Wicomico

Quillen, Robert

1927 - September 28

Dorchester

Quillen, Samuel M.,
Jr.

1931 - March 5

Wicomico

Quillon, Sarah
Margaret

1931 - July 30

Queen Anne

Quillin, Dorothy
Louise

1926 - February 26

Prince George

Quillin, Elisabeth E.

1931 - December 19

Baltimore

Quillin, Harriett

1934 - March 2

Worcester

Quillin, Nettie L.

1927 - February 22

Worcester

Quillin, John L.

1926 - January 20

Worcester

Quillin, Levi J.

1928 - January 23

Worcester

Quillin, Louise C.

1920 - July 21

Worcester

Quillin, Margaretta
R.

1932 - May 20

Worcester

Quillin, Martha K.

1926 - August 18

Worcester

Quillin, Milby

1929 - June 14

Worcester

Quillin, Nellie
Laverne

1925 - October 13

Worcester

Quillin, Thob M.

1938 - July 29

Woomioo

Quillin, Rebecca

1926 - May 25

Worcester

Quillin, Reverdy

1929 - January 29

Queen Ann

Quillin, Virginia W.

1931 - November 14

Worcester

Quillin, William H.

1929 - January 17

Worcester

Quimby, John

1929 - May 24

Queen Anne

Quincy, Sarah Emily

1933 - August 9

12 lb 0 t

Quimby, Sophia

1932 - August 12

Queen Anne

Quimby, Walter

1927 - March 24

Woomioo

Quinby, William C.

1925 - January 31

Talbot

Quinby, William
Poet

1928 - August 30

Somerset

Quinlin, Leonard G.

1926 - February 15

Baltimore

Quinn, Alfred J.

1931 - February 12

Anne Arundel

Quinn, Amanda T.

1924 - April 13

Worcester

Quinn, Annie

1931 - September 27

Worcester

Quinn, Annie C.

1927 - March 27

Anne Arundel

Quinn, Charles L. Jr.

1929 - July 17

Arne Arundel

Quinn, Doris Ileana

1927 - July 28

Caroline

Quinn, Edw.

1929 - October 22

Anne Arundel

Quinn, Elizabeth

1900 - Nov 11

Worcester

Quinn, Emily Anne

1925 - November 18

Queen Anne

Quinn, Plitchey

1930 - May 29

Galbot

Quinn, Francis John

1928 - March 17

Frederick

Quinn, Frank A.

1924 - Jan. 19

Harford

Quinn, Frank L. O.

1928 - November 19

Worcester

Quinn, Jacob

Patrick

1933 - November 4

Frederick

Quinn, James Edward

1929 - June 12

Worcester

Quinn, James Harold

1927 - December 9

Frederick

Quinn, Jane E.

1933 - March 21

Kent

Quinn, John D.

1930 - November 24

Montgomery

Quinn, John Y.

1929 - January 2

Kent

Quinn, Leonard J.

1925 - October 22

Frederick

Quinn, Loretta

1926 - February 7

Howard

Quinn, Martha Ann

1931 - February 9

Anne Arundel



Quinn, Martin A.

1926 - August 18

Frederick

Quinn, Mary

1929 - January 10

Baltimore

Quinn, Mary C.

1930 - May 30

Montgomery

Quinn, Samuel

Francis

1925 - January 1

Worcester

Quinn, Thom. H.

1929 - January 19

Kent

Quinones, Andrea

1929 - September 15

Anne Arundel

Quintard, Frederic
Homer

1933 - November 10

Montgomery

Quinton, Fred A.

1929 - August 9

Woomioo

Quinton, Mirada F.

1914 - Feb. 28

7100M.00

See Brown

Quinton, Paul Henry

1925 - May 23

Woomio

Quirk, Andrew E.

1932 - February 8

Howard

Wisenberry, Edith
1931 - September 7
Montgomery

Quisenberry, Ellen

1989- August 28

Montgomery

Quisnorio, Elena

1930 - February 10

Anne Arundel

Quillin, Maggio J. T.

1930 - April 21

Wicomico

Quynn, Caspar

1931 - November 3

Frederick

Quynn, Harriet
Eleanor

1928 - April 27

Frederick

Reab, George

1930 - June 17

Baltimore

Rad, Catherine
Elizabeth

1928 - November 3

Baltimore

Rambo, Henry

1931 - May 30

Frederick

Rabbitt, Clayton

1932 - February 28

Montgomery

Rabbitt, Edward
Palmer

1925 - January 23

Montgomery

Rabbitt, Geo.
Griffith

1927 - February 6

Prince George

Rabbitt, Ida E.

1928 - July 21

Montgomery

Rabbitt, Ida Marie

1925 - December 20

Montgomery

Rabbitt, Mary Teresa

1932 - September 14

Prince George

Rabbitt, Paul

1928 - March 13

Montgomery

Rabins, Gerry

1924 - Jan. 17

Wilmington

Rabillon, Marguerite

1925 - July 31

Baltimore

Rabl, Susanna

1929 - March 8

Baltimore

Rabold, Ana Eliza

1925 - September 11

Carroll

Maor, Willa Lee

Reford Wm. & Emma
Louise

1932 - August 17

Garrett

Racey, Bel

1933 - June 14

Allegany

Rachalski, Alexandra

1924 - May 10

Baltimore

Rachbaugh, Zoe
Walker

1925 - June 18

Harford

Rachuba, John

1932 - January 197

Coil

Racine, Albert D.

1930 - July 1st

Cecil

Racine, Benjamin D.

1927 - August 22

0001

Racine, Tu Rio V.

1924 - March 1st

Harford

Maok, Edward

1930- July 8

Wicomico

Rack, Josiah

1933 - February 4

Wicomico

Rackey, Anna Allice

1931 - March 215

Prince George

Rackl, Joseph

1933 - May 1

Ballimore

Radcliff, Annie
Rebecca

1926 - April 19

Frederick

Radoliff, Dilsey
Dora

1930 - June 5

Coil

Radcliff, Dr. Henry
Granville

1926 - January 4

Frederick

Radcliffe,

1932 - October 18

Baltimore

Radcliffe, Agnes

1929 - July 16

Dorchester

Radcliffe, Edmund

1926 - September 8

Talbot

Radcliffe, Helen
Alberta Mullinix

1931 - May 9

Frederick

Hadcliffe, Irma V.

1930 - April 20

Baltimore

Radcliffe, Oliver

1933 - January 31

Talbot

Radcliffe, Salem

1927 - July 10

Allegheny

Radcliffe, Samuel
Eugene

1926 - July 9

Howard

Radcliffe, Sophie D.

1927 - January 17

Dorchester

Radcliffe, Willie A.

1930 - May 13

Carroll

Raddy, Martha Ann

1933 - November 14

Frederick

Rader, Catherine
Virginia

1928 - October 17

Washington

Rader, Elizabeth
L.

1930- Sept 30

Wisconsin

Rader, Henry, Sr.

1933 - July 22

Baltimore

Rader, James
Presley

1926 - July 9

Prince George

Rader, Sarah A.

1925 - March 11

Baltimore

Rader, Wilhelmina

1924 - February 18

Baltimore

Radford, Bobby See

1931 - January LP

Prince George

Radifer, Harry S.

1930 - October 7

Baltimore

Radigan, Mary

1927 - November 8

Allegany

Radtke, Dorothy

1924 - Dec. 31

Prince George

Radke, Howard Gore

1926 - February 3

Montgomery

Radley, Anna E.

1938 - October 21

Frederick

Radley, Charles E.

1928 - July 27

Frederick

Radtka, Frederick G.

1927 - October 29

Anne Arundel

Radtke, Albert

1933 - October 30

Prince George

Radtke, Mona

1933 - May 3

Prince George

Reeburn, Elsie

Louise

1930 - July 18

Montgomery

Raff, Adam K.

1929 - November 8

Washington

Raffelman, Joseph

1929 - June 11

Baltimore

Kaffensberger, Paul
Richard

1939 - February; 25

Washington

Rafferty, James

1932 - February 23

Baltimore

Rafferty, James B.

1931 - April 1

Baltimore

Rafferty, Margaret
A.

1929 - May 20

Baltimore

Rafferty, Mary

1938 - May 28

Allegany

Rafferty, Rose

Ullanee

1924 - October 9

Allegany

Rafferty, Wm.

1932 - March 25

Baltimore

Rafia, Jennie

1931 - January 27

Allegheny

Reagan, Elizabeth V.L.

1932 - July 26

Washington

Ragan, Hannah

Rebecca

1925 - July 31

Ce011

Ragan, John Wesley

1931 - March 6

Ce011

Ragan, Mary Ella

1924 .. July 5

Coil

Ragan, Mary Jane

1928 - July 11

Frederick

Rager, Rose A.

1924 - Sept. 7

Washington

104-115-10

Raglan, Elsie

1927 - October 13

Carroll

Rahrig, Mary

1924 - February 4

Allegany

RAIFIELD, CHARLIE

1931 - March 8

Dorchester

Reikes, Lenca

1932 - December 11

Talbot

Railley, Chau.

Edward

1928 - December 4

Garratt

Railley, Chas. R.

1924 - April 22

Princo Georgia

Railey, Estelle
Jeanette

1928 .. January 3

Calvert

Railley, Floyd

Jackson

1927 - July 6

Calvort

Railing, Christian

1927 - March 9

Frederick

Railing, George
H.

1930 - April 2

Frederick

Railton, Bothiah
Arthur

1929 - December 3

Prince George

Rainbow, Louis

1933 - August 2

Harford

Raines,

1924 - January 6

Allegany

Raines,

1932 - March 29

Allegany

Raines, Agnes Ellen

1931 - October 16

Montgomery

Raines, Cora

1928 - January 11

Allegany

Raines, Janet

1931 - October 15

Allegheny

Rainey, Annie
Campbell

1927 - July 28

Allegheny

Rains, Ruth

1931 - May 16

Anne Arundel

Ralsen, Abraham

1927 - April 6

Queen Anne

Rainen, Elva M.

1928 - October 14

Coil

Raisin, Annie

1927 - February 8

Talbot

Raison, Armeda

1930 - August 29

Cecil

Raison, James

1927 - April 4

Cocil

Rath, Ruth P.

1926 - September 18

Allegany

Ratt, Viola

1924 - December 9

Baltimore

Rajan, Herman E.

1928 - August 26

Cecil

Rakee, Clarence E.
Jr.

1930 - January 24

Talbot

Rakes, Ellen R.

1928 - April 9

Talbot

Rakes, James T.

1929 - February 23

Talbot

Rakes, Mary E.

1930 - April 15

Talbot

Rakes, Philamon

1938 - March 23

Talbot

Rakes, William F.

1954 - Dec. 4

Talbot

Rakus, Eva

1933 - October 18

Baltimore

Raleigh, Mary
Margaret

1924 - Feb. 5

Dorchester

Raley, Dan Lewis

1931 - February 17

Garratt

Raley, Edgar

1926 - May 23

St. Mary's

Raley, Ernst Francis

1932 .. May 18

St. Mary's

Raley, Eugene
James

1929 - February 22

Garrett

Raley, Jane
Elizabeth

1933 - December 27

St. Mary's

Ralsy, John D

1924 - Aug. 1.

St. Mary's

Maloy, J. S. 1904

1904 - AUG. 22

St. Mary's

Raley, Louis T.

1929 - March 15

St. Mary's

Raley, Mary
Antinette

1927 - January 6

St. Mary's

Raley, Nettie

1927 - March 2

Allegheny

Raley, Nora Lee

1926 - May 19

Garrett

Raley, Peter A.

1931 - March 14

Somerset

Raley, Philip

1927 - January 8

St. Mary's

Raley, Rebecca

193C - December 10

Allegany

Raley, Robert
Eugene

1926 - May 14

Garratt

Raley, William
John

1925 - July 18

Garrett

Raleys, Dominick

1930 - January 28

St. Mary's

Ralley, Sarah

1933 - January 4

Dorchester

Rally, Anna

1930 - May 11

St. Mary's.

Reloff, Stella

1933 - May 19

Baltimore

Ralph, Annie Sudler

1930 - May 1

Prince George

Ralph, Charles
Alfred

1924 - July 21

Wicomico

Ralph, Norman Otis

1932 - October 18

Harford

Ralph, Kachie

1925 - June 18

Dorchester

Ralston, Mary

1924 - August 27

Alexander

Ralston, Morris
Henry

1929 - January 2

Allegany

Ralston, Nora M.

1925 - Maron 22

Allegany

1931 - December 26

Allegany

Ramaciotti, Donna
Louise

1930 - September 30

Washington

Rambo, Elizabeth

1927 - August 29

Coil

Rambo, Joseph

Dorchester

Rambo, Lester E.

1946 - December 29

Dorchester

Rambo, Margaret S.

1924 - Dec. 3

Kent

Rambo, Mary
Elizabeth Louise

1989 - September 29

Montgomery

Rambo, William H.

1925 - October 21

Kent

Ramer, Catherine
Virginia

1930 - January 19

Carroll

Ramer, Scott Graham

1932 - August 23

Carroll

Ramhoff, Rebecca

1925 - June 23

Allegany

Ramoskey, William
H.

1926 - June 4

Coil

Rampley, Mary E.

1928 - December 9

Harford

Ramsay, George

1930 - May 12

Anne Arundel

Ramsay, Hannah A.

1926 - November 20

Baltimore

Ramsay, James
William

1930 - May 7

Baltimore

Ramsay, John F.

1932 - November 5

Harford

Ramsey, Lloyd A.

1924 - May 18

Harford

Ramsay, Mary E.

1928 - August 31

Harford

Ramsay, Thomas E.

1933 - June 24

Calvert

Ramsberg, Nelson

1924 - March 25

Carroll

Ramsburg, Alice May

1984 - Oct. 8

Frederick

Namsburg, Blanche
Ellen

1933 - July 16

Frederick

Ramsburg, Claggett
Eugene

1933 - June 18

Frederick

Ramsburg, Cornelia
V.

1927 - May 19

Frederick

Ransburg, Dan
Florence

1929 - November 30

Frederick

Ramsburg, Dennis
Casper

1928 - November 27

Frederick

Ramsburg, Doru E.

1927 - August 25

Frederick

Ramsburg, Clin
M.

1925 - July 24

Frederick

Ramsburg, Eve
Margaret

1927 - October 13

Carroll

Rensburg, Rowan
Putman

1932 - October 30

Frederick

Ramsburg, Ida Alice

1932 - August 8

Frederick

Rensburg, Ira C.

1927 - May 27

Frederick

Ramsburg, John Henry
Lighter

1928 - June 30

Frederick

Ramsburg, Martha
Ellen

1932 - April 18

Frederick

Ramsdell, Almyra
Louisa

1927 - September 12

Caroline

Ramsay, Isaac T.
1926 - February 1
Washington

Ramsey, Pinkie

Elizabeth

1932 - February 21

Calvert

Ramsey, Robert L.

1929 - December 4

Harford

Ramsay, Samuel

1928 - October 29

Washington

Ransoy, Sylvester
1927 - June 18
Marroll

Rumseyor, Nicholas

1929 - June 26

Baltimore

Ramshardt, Annie A.

1932 - September 21

Frederick

Ramskery, Nelson D.

1924 - March 23

Carroll

Ran, William Turner

1932 - January 28

Baltimore

Randall,

1925 - March 21

Anne Arundel

Randall,

1930 - February 20

Frederick

(See Smith)

Randall, Ada

1931 - August 24

Calvert

Randall, Annibell

1931 - October 20

Anne Arundel

Randall, Belle

1926 - July 6

Anno Arundel:

Randall, Benjamin
Elisha

1931 - September 11

Prince George

Randall, Bessie

1929 - January 5

Anne Arundel

Randall, Betty A.

1929 - December 31

Anne Arundel

Randall, Catherine

1929 - March 19

Anne Arundel

Randall, Charles W.

1927 - November 3

Prince George

Randall, Claude

1929 - May 4

Anne Arundel

Randall, Daisy
Estell

1932 - July 22

Baltimore

Randall, David

1928 - September 25

Allegany

Randall, Elizabeth

1933 - January 7

Anne Arundel

Randall, Evelyn B.

1926 - March 12

Montgomery

Randall, Garnett

1927 - July 10

Prince George

Randall, George
Abraham

1934 - April 2

Carroll

Randall, George
Washington

1930 - August 10

Anne Arundel

Randall, Gertrude

1931 - March 28

Calvert

Randall, Hallowed

1934 - Nov. 5

Talbot

Randall, Hannah
Parker

1928 - March 27

Anne Arundel

Randall, Harriet

1936 - May 24

Anne Arundel

Randall, Harry C.

1930 - September 21

Washington

Randall, Harry
Tracey

1939 - May 6

Anne Arundel

Randal, Hattie A.

1924 - Dec. 12

Howard

Randall, Henry

1926 - March 31

Prince George

Randall, Henry

1927 - February 4

Prince George

70
Randall, Isabel

1927 - July 27

Anne Arundel

Randall, James H.

1930 - April 10

Cecil

Randall, June

1937 - June 13

Tibet

Randall, John H.

1927 .. September 10

Calvert

Randall, John M.

1924 - February 3

Baltimore

Randall, John
Wesley

1927 - January 15

Prince George

Randall, Joseph

1928 - January 13

Anne Arundel

Randall, Leopold

1926 - February 4

Culvert

Randall, Lewis H.

1929 - September 25

Carroll

Randall, Louis

1933 -- December 9

Anne Arundel

See Reynolds



Randall, Louis

1931 - June 4

Anne Arundel

Randall, Lucy H.

1926 - January 12

Anne Arundel

Randall, Margaret
Hardy

1932 - November 11

Howard

Randall, Mary E.

1925 - June 28

Anne Arundel

Randall, Mary E.

1933 - March 8

Coel

Randall, Michael W.

1932 - November 25

Baltimore

Randall, Philip C.

1987 - January 15

Baltimore

Randall, Robert W.
1989 - November 14
Dorchester

Randall, Sally

1928 - June 22

Prince George

Randall, Stephen H.

1926 - July 8

Anne Arundel

Randall, Susie

1930 - November 7

Carroll

Randall, V.
Worthington

1926 - May 2

Washington

**Randall, Sylvester
R.**

1925 - February 20

Talbot

Randall, William

1938 - May 8

Anne Arundel

Randell, Arch

1927 - September 23

Baltimore

Randell, Margaret

1926 - September 29

Prince George

Randell, Nora H.

1931 - May 15

Allegheny

Randells, Mary Liza

1924 - Sept. 6

Garrett

Rundle, George W.

1926 - April 17

Baltimore

Randle, Hannah

1929 - September 28

Frederick

Randolph,

1932 - March 24

Fredrick

Randolph, Carlton

1924 - Sept. 29

Frederick

Randolph, Dora

Louise

1931 - March 15

Montgomery

Randolph, G. Henry
Fitz

1934 - April 4

Caroline

Randolph, Harvey W.

1934 - Jan. 8

Montgomery

Randolph, Howard

1925 - April 11

Baltimore

1932 - March 13

Randolph, Jesse C.,
Jr.

1932 - March 13

Allegany

Randolph, John

1932 - March 15

Anne Arundel

Randolph, John
Meredith Hogehead

1933 - February 1

Frederick

Randolph, Magnolia
Fannie

1932 - October 21

Carroll

Randolph, Margaret

1925 - April 10

Baltimore

Randolph, Martha

1826 - April 14

Dorchester

Randolph, Mary Ann

1932 - May 87

Prince George

Randolph, Mary
Josephine

1930 - February; 7

Allegany

Randolph, Nicholas

1925 - November 9

Montgomery

Randolph, Virginia

1926 - January 18

Carroll

Randolph, Viola

1933 - April 12

Ande Arundel

Randolph, Wm. Henry

1927 - March 10

Harford

Randow, Frank H.

1929 - September 17

Harford

Randow, Mary C.

1929 .. December 27

Harford

Raney, James P.

1926 - September 12

Montgomery

Ranft, Charles F.

1938 - November 21

Baltimore

Ranft, Charles F.

1932 - November 21

Baltimore

Rank, Henrietta

1932 - November 9

Allegany

Kank, John

1928 - January 10

Allegany

Rank, John H.E.

1924 - May 19

Allegany

Ranker, Clara Ella

1932 - June 1

Allegheny

Rankin

1934 - December 1935

Allogamy

Rankin, Annie
Scott

1933 - October 25

Allegany

Rankin, Clayton

1929 - January 5

Allogany

Rankin, Elizabeth
Elion

1924 - April 9

Frederick

Rankin, Florence C.

1927 - November 8

Allegany

Rankin, Grace L.

1930 - December 30

Allegany

Rankin, James

1926 - February 8

Frederick

Rankin, James

1932 - October 11

Allegany

Rankin, Jane Marie

1927 - December 22

Allegheny

Rankin, Lavinia

1932 - March 18

Frederick

Rankin, Raymond
Joseph

1924 - May 31)

Allegany

Rankin, Robert M.

1930 - October 10

Allegany

Rankin, Raymond
Joseph

1924 - May 30

Allegany

Rankin, Robert M.

1930 - October 10

Allegary

**Rankin, Sarah
Veronica**

1925 - April 24

Montgomery

Rankin, Vivian
Eleanor

1934 - Feb. 27

Washington

Ranko,

1927 - January 18

Allogany

Ranneberger, Florence
Virginia

1931 - September 6

Frederick

Rannells, Page
Riley

1930 - October 14

Allegheny

Ransach, Charles F.

1929 - December 16

Allegany

Ranpach, Julia

1928 - February 23

Allegany

Ransom, Ethel

1933 - April 26

Baltimore

1929 - September 23
Anno Arundel

1929 - September 23

Anno Arundel

Ransom, W. H.

1926 - November 1

Dorchester

Ransom, Turner

1930 - December 27

Baltimore

Ranhome, Mary

1931 - September 23

Anne Arundel.

Ranson, Elisabeth
M.

Rapali,

1933 - January 31

Harford

Rapp, Anna

1930 - August 13

Baltimore

Rapp, George Albert

1926 - December 20

Carroll

Rapp, John Jacob

1951 - February 11

Quon Anno

... ..

Virginia

1927 - February 25

Carroll

Rappaselli, Edna

1931 - August 12

Harford

Rappe, William
F.

1929 - September 28

Baltimore

Rappold, Laura M.

1933 - November 7

Baltimore

Rarey, Mary Estelle

1938 - February 20

Anne Arundel

Rarig, Susan
Elizabeth

1989 -- February 14

Allegany

Raspberry, James

1928 - January 29

Queen Anne

Raso, Jeanette Mare

1931 - May 3

Allegany

Rasen, Mary Ellen

1931 - July 21

Dorchester

Rash, Donald Huber

1926 - April 3

Washington

Rash, George N.

1927 - November 16

Dorchester

Rash, George N.

1927 - November 16

Dorchester

(See Brandt)

Rash,

1931 - July 13

Montgomery

Rash, Harry

1930 - July 3

Talbot

Rash, John Thomas

1927 - August 19

Caroline

Rash, Luther M.

1949 - September 27

Coil

Rash, Mary

1927 - July 27

Wicomico

Rauh, William C.

1938 - March 19

Washington

Rushland, Frederick
.R.

1926 - May 27

Frederick

Hasimussen, Anton

1928 - September 5

Harford

Resin, Alphonso P.

1933 - June 19

Dorchester

Nasin, Doris Martha

1938 - October 26

Kent

Rasin, Helen

1926 - August 11

Carroll

Rasin, Isaiah

1931 - February 16

Kent

Rasin, Perry Book

1931 - October 15

Kent

Rasin, Perry F.

1929 - November 12

Talbot

Rasin, Rose Anna
Crow

1930 - January 28

Kent

Blasin, Walter W.

1930 - July 22

Baltimore

Rasinski, John

1927 - April 19

Frederick

Ratajczak, Andrew

1925 - July 9

Howard

See Brother Antoinette

Ratchell, Lindsey

1933 - October 16

Prince George

Ratoliff, Josina

1929 - June 28

Charles

Ratliff, Viola Edna

1924 - Oct. 30

Montgomery

Ratcliffe, Florence
Estelle

1930 - August 21

Harford

Rath, Henry J.

1932 - May 30

Cecil

Rathbone, Thomas

1924 - May 1

Prince George

Rathbun, Emily

1946 - November 21

Montgomery

Rathel, Ida

Jeanette

1925 - March 8

Dorchester

Rachel, Island S.

1944 - Oct. 28

Dorchester

Rethel, Virginia

1926 - January 9

Dorchester

Rathell, Gene
Porter

1924 - Dec. 15

Talbot

Rathell, John T.

1925 - June 12

Talbot

Rathell, Mary B.

1928 .. November 30

Talbot

Ratigan, James Edward

1931 - June 12

Allegany

Ratlidge, Arthur
Gillman

1928 - September 19

Worcester

Rattim, Angelo

1927 - March 29

Baltimore

41

Ratuszynskute,
Ursula

1927 - June 25

Baltimore

**Katuszynskite,
Ursula**

1927 - June 35

Baltimore

Rau, Charles Myron

1925 - February 20

Baltimore

Rau, Conrad John

1925 - August 11

Prince George

Rau, George

1929 - November 24

Carroll

Rauf, Louis E.

1928 - December 16

Baltimore

Raufeisen, Frank
Joseph

1932 - December 31

Talbot

Rauh, Margaret

1929 - April :17

Baltimore

Kaul, Thomas

1928 - December 29

Allegany

Raum, William M.

1933 - February 20

Prince George

Raupach, Edgar T.

1928 - February 16

Allegany

Rausch, Leroy J.

1946 - October 13

Carroll

Rausch, Margaret

1928 - December 30

Baltimore

Rausch, Martin

1926 - July 28

Anne Arundel

Rausch, Martin W.

1926 - August 17

Anne Arundel

Rasmussen, Martens

1928 - August 20

Baltimore

Kauth, Charles W.

1939 - July 18

Washington

Rauth, James
Richard

1929 -- January 14

Washington

Rauth, Laura M.

1926 - April 26

Washington

Rauth, Lucy S.

1924 - April 16

Washington

Rauth, Margaret V.

1927 - December 14

Washington

Rauth, Mary R.

1928 - February 1

Washington

Revenscraft, John
Oscar

1931 - July 18

Allegany

Ravenscroft, Claude
Wright

1930 - October 13

Allegany

Ravenscroft,
Elizabeth Long

1932 - March 21

Allegany

Ravencroft,
Florence

1930 - March 23

Allegany

Ravencroft, Jennie

1931 - December 11

Carrett

**Ravenscroft, John
Frank**

1932 - April 7

Allegany

Ravenscroft,
Margarett Susan

1927 - July 25

Allegany

Ravenscroft,

Matilda

Ann

1928 - January 11

Allegany

Ravenscroft, Thomas
H.

1925 - August 20

Allegany

Ravenstein,

1930 - July 3

Allegany

Raver, Patsy Ruth

1932 - October 18

Carroll

Raver, Sophia

1927 - June 25

Baltimore

Rawhouser, William
Hicks

1930 - December 30

Harford

Rawleigh, Mrs.

Thomas

1926 - April 6

Dorchester

Rawley,

1928 - August 11

Prince George

Rawling, Edward

1926 - August 20

Kent

Rawlings,

1924 - Feb. 19

Frederick

Rawlings

1924 - April 24

Allogany

Rawlins

1926 - July 6

Culvert

Rawlings,

1930 - May 18

Prince George

Rawlins, Alberta

1933 - July 9

Calvert

Rawlings, Alice

1933 - March 27

Calvert

Rawlings, Bessie E.

1930 - February 21

Anne Arundel

Rawlings, Mrs.
Daniel Ray

1929 - January 10

Calvert

Rawlings, Estrella

1986 - May 18

Prince George

Rawlings, Fannie

1930 - August 11

Allegany

"

Newlinen, Frances
Juliet

1921 - March 3

Ann Francol

Rawlings, Frances
Marion

1928 - June 28

Cecil

Rawlings, Frank

1929 - May 27

Prison George

Rawlings, George
MoC.

1926 - February 6

Anne Arundel

Rawlings, George
W.

1929 - February 1

Prince George

Rawlings, Georgina

1928 - September 21

Allegany

Hawlings, George
W.

1929 - February 1

Prince George

Hawlings, Georgina

1928 - September 21

Allegany

Rawlings, Henry
Edward

1931 - October 11

Anne Arundel

Rawlings, Jaman
Francis

1933 - April 20

Prince George

Rawlings, Josephine

1929 - March 18

Montgomery

Rawlings, Mary
Margaret

1928 - November 19

Prince George

Rawlings, Mary

1929 - February 6

Prince George

Rawlings, Mary D.

1931 - June 28

Calvert

Rawlings, Mary E.

1932 - December 4

Baltimore

Rawlings, Mary V.

1928 - August 25

Calvert

Rawlings, Michael
Augustine

1932 - January 18

Prince George

Rawlins, Myrtle

Johnson

1927 - December 24

Calvert

Rawlings, Orval
Russel

1924 - Jan. #2

Garrett

Rawlings, Richard
Alfred

1932 - June 1

Prince George

Rawls,

1934 - Oct. 17

Washington

Rawson, Albert J.

1928 - July 26

Worcester

Rawson, Thomas
Jefferson

1944 - April 2

Woonico

Ray,

1931 - January 21

Allegany

Ray, Agnes M.

1930 - May 5

Baltimore

Ray, Alice Virginia
Bogler

1932 - April 8

Montgomery

Ray, Alverda

1928 - January 11

Dorchester

Ray, Annie M.

1925 - February 9

Montgomery

Ray, Anthony
Moreland

1930 - March 14

Montgomery

Ray, Boyd

1931 - March 15

Garrett

Ray, Carlton T.

1929- September 8

Montgomery

Ray, Clarence

1931 - September 1

Prince George

Ray, Dora Gertrude

1927 - January 8

Anne Arundel

Ray, Dora H.

1932 - December 28

Cecil

Ray, Doris E.

1927 - August 1

Baltimore

Ray, Edward

1932 - December 18

Baltimore

Ray, Eleazar

1927 - January 21

Montgomery

Ray, Eliza Earp

1931 - February 13

Montgomery

Ray, Eliza Sellman

1928 - December 17

Anne Arundel

Ray, Emma Rebecca

1924 - Oct. #2

Howard

Ray, Esther M.

1924 - July 3

Baltimore

Ray, Ethel Toy

1933 - June 18

Carroll

Ray, Eva

1927 - September 1

Calvert

Ray, Fillmore

1925 - May 9

Carroll

Ray, Floyd

1931 - March 3

Garrett

Ray, Francis

1926 - February 26

Baltimore

Ray, George M.

1930 - April 14

Carroll

Ray, Harrison

1920 - September 3

Culvert

Ray, Henry W.

1926 - May 29

Frederick

Ray, John

1931 - January 6

Carroll

Ray, Katherine

1927 - October 16

Carroll

Ray, Leana

1934 - Oct. 25

Montgomery

Ray, Marcelon R.

1931 - February 7

Frederick

Ray, Margaret

1932 - July 9

Anne Arundel

Ray, Marion

1926 - May 30

Washington

Ray, Martha Virginia

1926 - August 2

Montgomery

Ray, Mary E.

1927 - July 14

Talbot

Ray, Mary E.C.

1932 - August 29

Montgomery

Ray, Nannie E.

1932 - January 6

Frederick

Ray, Nicholas Edward

1926 - June 29

Montgomery

Ray, Preston B.

1931 - April 15

Montgomery

Ray, Nichol W.

1933 - August 11

Carroll

Ray, Rachel.

Virginia

1924 - March 16

Anne Arundel

Ray, Rebecca

1950 - March 2

Caroline

(See Roy)

Ray, William

1929 - February 3

Baltimore

Ray, William
Alexander

1929 - March 2

Anno Arunde.

Ray, Wm. C.

1933 - August 9

Howard

Ray, Wm. I.

1926 - July 21

Baltimore

Ray, William T.

1925 - November 14

Montgomery

Rayfield, Erucilla

1931 - December 9

Worcester

Rayfield, Fred

1928 - April 7

Wicomico

Rayfield, George

1932 - March 18

Worcester

Rayfield, James
K.

1927 - March 1

Somerset

Rayfield, Peter C.

1931 - October 22

Somerset

Rayfield, William
Aron

1925 - January 6

Somerset

Raylander, Victoria

1925 - January 22

Anne Arundel

Raylon, Barbara

1925 - July 1

Baltimore

Rayne, George W.

1938 - November 2

Baltimore

Rayne, Marcia Ellen

1931 - October 25

Harford

Rayne, William T.

1926 - March 7

Worcester

Raymond, Eliza A.

1933 - October 5

Montgomery

Raymond, Emily

1925 - February 21

Charles

Raymond, Frank

1929 - December 14

Harford

Raymond, Jeannette

1926 - January 2

Prince George

Raymond, Martha
Prison 11a

1933 - April 13

Harford

Raymond, William

1928 - March 1

Charles

Raymond, William
Andrew

1927 - March 13

Prince George

Rayne,

1927 - May 27

Wicomioo

Rayno,

1927 - October 10

Wicomico

Rayne, Annie B.

1923 - November 16

Wicomico

Rayne, Arthur D.

1932 - August: 8

Wicomico

Rayne, Calvert

Jennigs

1926 - March 26

Wicomico

Wayne, Charles H.

1929 - March 18

Worcester

Rayne, Eliza M.

1924 - Sept. 27

Wiconico

Rayne, Elmer P.

1932 - August 23

Wicomico

Rayne, George
Washington

1932 - June 17

Woomioo

Rayne, Gilis E.

1932 - December 2

Worcester

Rayne, James

1928 - February 25

Woomioo

Rayne, James E.

1925 - November 13

Worcester

Rayno, John Henry

1927 - February 21

Worcester

PEARSON, John
Richard

1904 - Sept. 10

Worcester, Mass.

Rayne, Lambert
Timothy

1928 - April 31

Woomioo

Rayne, Mary L.

1934 - Oct. 29

Worcester

Rayne, Mattie E.

1929 - June 13

Woomioo

Wayne, Morris Cyrus

1946 - September 20

Woomice

Rayne, Myrtle H.

1926 - May 1

Wicomico

Rayne, Rosena

Isabella

1929 - November 29

Woomioo

Rayne, Rosina
Andasia

1931 - March 15

Worcester

Rayne, Timothy H.

1927 - August 22

Worcester

Rayner, Harry James
Jr.

1928 - May 13

Baltimore

Franklin C.

1924 - Oct. 14

Harrford

Raynor, George A.

1935 - August 13

Frederick

Raynor, Joseph
Maynard

1929 - September 10

Allegany

Raynor, Mary
Elisabeth

1928 - July 18

Alligany

Raynor, Thomas J.

1980 - April 25

Anno Arundel

Rev. Annie K.

1928 - December 5

Kent

Rea, Edwin Wallace

1933 - October 14

Co011

Reachard, John-
Milford

1924 - May 31.

Harford

Read, Benjiman

1930 - February 14

Talbot

Read, Elias H.

1924 - January 25

Baltimore

Read, Elias

William

1925 - September 12

Baltimore

Read, Emilie O.

1928 - May 11

Montgomery

Read, Emma L.

1926 - August 11

Anne Arundel

Read, Frenklin H.

1931 - July 17

Montgomery

Read, Harry John

1933 - August 23

Anne Arundel

Read, Mollie E.

1929 - May 28

Baltimore

Read, Selena

1928 - July 29

Prince George

0.

Read, William H.D.

1928 - July 29

Frederick

Read, William
Thompson

1926 - November 10

Prince George

Reader, Joseph
Clyde, Jr.

1931 - February 5

Anne Arndel

Reading, Belle

1924 - Jan. 18

Comoros

Reading, George M.

1933 - February 7

Baltimore

Reading, Joseph R.

1927 - April 17

Somerset

Readmond, Gerald
W.

1928 - July 11

St. Mary's

Readmond, James
Richard

1987 - May 22

Carroll

Reagan, James

Edward

1931 - November 2

Allegany

Reagan, Robert

1933 - September 30

Cecil

Reagle, George L.

1926 - August 10

Carroll

Realey, Edwin W.

1933 - May 17

Co01

Ream, Eva Opal

1927 - June 6

Garrett

Ream, Fannie

1931 - April 27

Washington

Reamer, August or
Gus

1933 - December 5

Harford

Reamer, George W.

1926 - January 18

Queen Anne

Reamer, Julia E.

1928 - May 30

Washington

Roamey, Alice

1931 - February 8

Prince George

Reamey, Eunice

1925 - September 16

Talbot

Reams,

1929- September 15

Garrett

Reams, Carnelious
Eli

1925 - July 6

Garrett

Reams, Harland
Lynn

1931 - May 29

Garrett

Reams, Ida M.

1925 - May 18

Allegany

Reams, Phion B.

1928 - April 15

Garrett

Reams, William

1924 - Jan. 11.

Garrett

Reamy, Thomas J.

1927 - January 3

Baltimore

Reardon, Catherine

1930 .. August 5

Baltimore

Reardon, Paul V.

1927 - April 15

Calvert

Reaser, Alberta Ruth

1932 - December 30

Baltimore

Reaser, Mary Jane

1930 - December 30

Caroline

Reasin, Annie E.

1924 - Feb. 17

Hurford

Kessin, Gertrude

1937 - February 5

Harford

Reaver, Cora M.

1924 - Feb. 22

Carroll.

Reaver, Clara V.

1926 - July 10

Curroll

Reuver, Eliza Jane

1928 - April 22

Carroll

Reaver, Emma

1932 - November 17

Carroll

Reaver, Emma Jane

1933 - January 20

Carroll

Reaver, Franklin F.

1930 - July 2

Carroll

Reaver, James M.

1926 - October 2

Carroll

Reaver, John T.

1931 - July 30

Carroll

Reaver, Mary R.

1932 - August 14

Carroll

Reaver, Milton A.

1930 - March 7

Carroll

Reaver, Raymond

1926 - November 22

Baltimore

Reaver, Upton I.

1929 - February 26

Carroll

Reaver, Walter Earl

1931 - July 4

Carroll

Reaves, Florence

1925 - May 8

Carroll

Reavis, Evelyn

1931 - February 17

Montgomery

Reay, Harry S.

1926 - June 6

Carroll

Rebbel, Louis A.

1924 - February 24

Baltimore

Reber, George F. Jr.

1931 - September 12

Montgomery

Robert, Clara
Heisen

1930 - February 28

Frederick

Rebok,

1924 - June 16

Washington

Rebetook, Sophia R.

1924 - October 10

Baltimore

Recher, Clara

1925 - April 25

Washington

Recher, Mary L.

1931 - June 26

Frederick

Rechtsweiner, Mary E

1933 - January 13

Baltimore

Reck, Annie E.

1924 - Oct. 31

Carroll

Reek, Annie M.

1930 - June 4

Frederick

Reok, Barbara

1924 - May 4

Howard

Reek, Ina
Celestine

1930 - April 2

Frederick

Reek, Margaret
Elizabeth

1925 - June 3

Carroll

Reekard, Dolly

Elizabeth

1931 - July 10

Garrett:

Reckefus, Alice M.

1924 - May 14

Cecil

Reckerfus, Alice M.

1924 - May 14

Cecil

1928 - January 2

Rocker, Ida Della

1928 - January 2

Arne Arundel

Recker, John Edwin

1928 - Februar: 16

Anne Arundel

Recker, William

Walter

1932 - May 27

Anne Arundel

Reckert, Ellen M.

1925 - March 14.

Washington

Reeketts, Uriah

1924 - April 1

Montgomery

Reckley,

1929 - June 25

Allegany

Reckley, Margaret

1924 - February 9

Allogany

(See Kern.)
Reckley, Margaret
Roue

1931 - August 26

Allegany

Reckley, Mary E.

1928 - December 18

Allegany

Reekord, Ida F.

1923 - February 13

Baltimore

Records, Lucinda E.

1924 - May 18

Wicomico

Recorda, Willie A.

1933 - January 22

Wicomico

Rector,

1930 - April 3d

Somerset

Rector, Albert

1931 - March 1

Harford

Rector, David S.

1933 - November 26

Washington

Rector, Ellen
Lucille

1934 - March 19

Washington

Rector, Irvin David

1925 - September 6

Washington

Rector, Jefferson
Franklin

1930 - October 5

Prince George

Rector, Susan M.

1932 - February 19

Harford

Redd, Nellie

1925 - March 16

Prince George

Reed, William Henry

1932 - May 21

Prince George

Reddeok, Orra K.

1933 - April 5

Frederick

Redden, Anna

1931 - July 22

Somerset

Kedden, Austin

1926 - February 23

Worcester

Redden, Charles

1927 - March 23

Anne Arundel

Redden, Charlott

1933 - July 25

Worcester

Redden, Colwyn
Cropper

1933 - June 11

Worcester

Redden, Dorothy

1930 - April 6

Talbot

Redden, Ella
Lankford

1935 - January 7

Worcester

Redden, Ellen E.

1928 - December 8

Worcester

Redden, Francis
Felman

1930 - March 28

Somerset

Redden, Franklin
Wallace

1926 - May 19

Caroline

Redden, George
Thomas

1928 - December 10

Caroline

Redden, George W.

1933 - June 9

Worcester

Redden, Jas. Alfred

1929 - December 24

Anne Arundel

Redden, Joseph

1924 - Feb. 27

Worcester

Redden, Lizzie

1930 - March 26

Worcester

Redden, Louis F.

1933 - December 20

Worcester

Redden, Mary

1925 - August 15

Dorchester

Redden, Marriott
Seysour

1928 - October 4

Talbot

Radon, Martindale

1932 - September 15

Worcester

Hedden, Minnie

1929 - May 28

Worcester

Redden, Miriam S.

1924 - Jan. 9

Worcester

Redden, Orlando
James

1928 - June 22

Caroline

Redden, Sallie A.

1926 - January 28

Worcester

Redden, Susie
Elizabeth

1933 - November 30

Caroline

Reiden, William I.

1934 - Oct. 7

Worcester

Reddick, Anna M.

1929 - September 23

Caroline

Reddie, William

1929 - February 28

Talbot

Redding, Alexander

1932 - July 18

Kent

Redding, Ethel M.

1929 - May 27

Kent

Redding, Harold

1930 - June 29

Culvert

Redding, John H.

1931 - April 18

Carroll

Redding, Mary

1928 - April 11.

Kent

Redding, Scott

1933 - November 4

Somerset

Redding, Susan
Willie

1931 - May 24

Baltimore

Redding, Virginia
Todd

1930 - January, 18

Prince George

Reddish, Alfred W.

1925 - September 19

Wicomio

Reddish, Carl: bel

1927 - February 20

Woomioo

Reddin, Horace H.

1930- Dec 5

Wicomico

Reddish, Stella

1931 - November 20

Wisomico

Reddix, Florence H

1934 - Dec. 5

Prince George

Redefer, Harriett

1928 - March 14

Dorchester

Redfield, Flora
Frances

1930 - July 17

Montgomery

Redgrave, James

1933 - February 28

Kent

Redgrave, Mary
Elizabeth

1924 - Dec. 7

Cecil

Redhead, Margaret
Augusta

1930 - February 2

Montgomery

Redhead, Sallie
Elisabeth

1929 - November 21

Caroline

Medias, Wilhelmine

1932 - February 16

St. Mary's

Redifer, Jamie
Leonard

1930 - July 15

Baltimore

Redifer, William
Lawrence

1933 - November 28

Baltimore

Hodman, Corliss H.

1928 - May 17

Talbot

Redman, Edward

1924 - Feb. 18

Montgomery

Redman, Gertrude
Jeannette

1927 - December 29

St. Mary's

Redman, Hatway

1933 - January 30

Anne Arundel

NEEDMAN, John Samuel

1933 - August 13

Washington

Redman, Joseph C.

1925 - December 24

Frederick

Redman, Mary C.

1930 - September 11

Prince George

Redman, Pauline May

1926 - August 26

Frederick

Redman, Sarah A.

1929 - September 3

Cecil

Redman, William

1929 - July 18

Coil

Redmile, John C.

1926 - September 13

Kent

Redmile, Rachel

1929- August 19

Kent

Redmile, Wilhelmina

1924 - Sept. 19

Kent

Redmiles, Raymond
Jr.

1929 - July 28

Howard

Redmiles, William
W.

1930 - April 20

Howard

Redman, John

1934 - Nov. 20

Queen Anne

Redmon, Mary

1927 - June 25

Baltimore

Redmon, Octave

1931 - February 12

Montgomery

Redmond, Allen R.

1933 - October 16

Frederick

Redmond, Anna.

1924 - March 31

Allegany

Redmond, Mary
Elizabeth

1932 - February 3

Baltimore

Redmond, William

1930 - July 10

St. Mary's

Reece, Margaret
Elston

1932 - August 18

Frederick

Recher

1927 - October 27

Washington

Recher, Robt. W.

1927 - November 5

Washington

Reed

1926 - September 24

Baltimore

Reed

1929- October 11

Calvert

Reed,

1930 - May 10

Frederick

Reed,

1933 - July 23

Wisconsin

Reed,

1932 - September 10

Washington

Reed, Addison

1929 - March 14

Cecil

Reed, Agnes V.

1928 - June 21

Baltimore

Reed, Amelia

1934 - Feb. 13

Washington

Reed, Anna Eunice

1933 - September 14

Carroll

Reed, Anna E.

1931 - December 11

Frederick

Reed, Anna May

1925 - June 6

Carroll

Reed, Anna Ruth

1929 - May 29

Cecil

Reed, Annie E.

1932 - December: 9

Allegany

Reed, Annie Elizabeth

1932 - November 23

Prince George

Reed, Annie G.

1925 - August 18

Caroline

Reed, Ara Adna

1930 - January 23

Prince George

Reed, Archibald

1929 - December 10

Washington

Reed, Armstond

1933 - January 10

Baltimore

Reed, Attu

1929 - March 19

Prince George

Reed, Benjamin

1933 - January 15

Charles

Reed, Benjamin
Marple

1928 - May 28

Cecil

Reed, Bessie M.

1932 - September 24

Montgomery

Reed, Billie
(William)

1938 - August 22

Anne Arundel

Reed, Carrie C.

1921 - March 23

Allegany

Reed, Carrie

Estelle

1930 - July 21

Baltimore

Reed, Catherine

1930 - May 22

Washington

Reed, Charles E.

1926 - September 16

Baltimore

Reed, Chas. Ernest

1925 - July 20

Caroline

Reed, Ches M.

1928 - November 22

Montgomery

Reed, Christiann

1931 - March 11

Cecil

Reed, Claud

1931 - August 17

Allegany

Reed, Cora E.

1931 - July 9

Carroll.

Reed, Curtis I.

1926 - September 7

Baltimore

Reed, Daniel

1928 - June 29

Baltimore

Reed, David A.

1929 - January 17

Baltimore

Reed, David

Winchester

1989 - March 25

Garrett

Reed, Dorothy B.

1926 - June 7

Harford

Reed, Earl Lawrence

1927 - January 13

Montgomery

Reed, Edith V.

1930 - August 19

Washington

Reed, Edith W.

1928 - June 16

Washington

Reed, Edmund Frank

1930 - May 29

Carroll

Reed, Elenor

1934 - April 29

Cecil

Reed, Elenor

1927 - June 11

Kent

Reed, Elizabeth

1926 - May 24

Calvert

Reed, Elizabeth

1933 - December 3

Montgomery

Reed, Elizabeth V.

1932 - March 25

Allegheny

Reed, Eliza Minerva

1933 - June 30

Garrett

Reed, Elizabeth

1929 - May 29

Caroline

Reed, Elizabeth J.

1929 - November 7

Somerset

Reed, Elmo C.

1932 - September 15

Allegheny

Reed, Elva M.

1925 - January 4

Coil

Reed, Florence

1926 - April 28

Somerset

Reed, Frances May

1925 - May 28

Cecil

Reed, George

1926 - February 8

Caroline

Reed, Geo. W.

1932 - January 14

Montgomery

Reed, George I.

1932 - October 26

Caroline

Reed, George W.

1928 - July 22

Dorchester

Reed, Georgeanna M.

1928 - May 23

Dorchester

Reed, Georgie

1933 - December 12

Somerset

Reed, Gertrude M.

1927 - January 7

Carroll

Reed, Gladys

1931 - May 31

Allegheny

Reed, Glenn Richard

1929 - September 12

Washington

Reed, H. Grace

1930 - March 28

Dorchester

Reed, Harriet

Alkins

1928 - July 15

Allegany

Reed, Harry D.

1926 - December 30

Frederick

Reed, Helen

Robinson

1925 - November 19

Anne Arundel

Reed, Honette

1925 - August 13

Caroline

Reed, Henrietta

1929 - February 21

Queen Anne

Reed, Henry K.

1931 - June 27

Harford

Reed, Herbert

1924 - March 9

Calvert

Reed, J. Chelms

1932 - November 30

Washington

Reed, James,

1933 - March 19

Montgomery

Reed, James B.

1924 - March 9

Allogamy

Reed, James Edward

1928 - September 19

Prince George

Reed, James H.

1928 - August 24

Frederick

Reed, James Henry

1926 - April 9

Baltimore

Reed, James R.

1988 - June 5

Carrett

Reed, Jane Katharine

1931 - December 26

Ce011

Reed, Jenky Rebecca

1925 - January 5

St. Mary's

Reed, Jennie

1930 - October 28

Howard

Reed, Jesse Lue

1926 - April 28

Caroline

Reed, John

1928 - December 16

Caroline

Reed, John

1931 - April 20

Anne Arundel

Reed, John

1931 - January 13

Washington

Read, John (Mrs)

1931 - August 31

Caroline

Reed, John A. Jr.

1924 - September 12

Baltimore

Reed, John F.

1926 - December 10

Coil

Reed, John H.

1932 - April 1932

Somerset

Reed, John T.

1930 - August 31

Kent

Reed, John T.

1931 - July 6

Kent

Reed, John Thomas

1924 - June 8

Allegany

Reed, Joseph

1930 - October 23

St. Mary's

Reed, Joseph S.

1928 - November 17

Baltimore

Read, Joseph R.

1932 - November 23

Prince George

Reed, Joseph
Wheatley

1933 - February 26

St. Mary's

Reed, Julia

Florence

1926 - February 20

Frederick

Reed, Laura D.

1935 - January 8

Kent

Reed, Levi W.

1931 - March 21

Allogamy

Reed, Lockwood

1924 - June 11

Wicomico

Reed, Lola

1926 - January 30

Dorchester

Reed, Lousia

1926 - August 8

Anne Arundel

Reed, Louise

1928 - November 26

Carroll

Reed, Louisa W.

1926 - October 14

Baltimore

Reed, Lucille

1987 - August 19

Montgomery

Reed, Luoy

1928 - October: 20

Washington

Reed, Lydia E.

1931 - March 14

Prince George

Reed, Lynn Augustus

1932 - March 17

Montgomery

Reed, Margaret

1925 - March 27

Prince George

Reed, Margur. l te
O.

1929 - January, 30

Frederick

Reed, Marjorie

1925 - August 11

Allegany

Reed, Martha

1929 - August 9

Coil

Reed, Mary

1930 - August 23

Anne Arundel

Reed, Mary B.

1933 - December 6

Allegany

Reed, Mary C.

1924 - July 12

Allegany

Reed, Mary E.

1928 - February 24

Wicomico

Reed, Mary E.

1929 - April 14

Howard

Reed, Mary Elizabeth

1929 - October 3.

Alimony

Reed, Mary Elizabeth

1930 - September 15

Carroll

Reed, Mary Elizabeth

1932 - September 30

Baltimore

Reed, Mary Frances

1928 - March 17

Baltimore

Reed, Mary Isabella

1925 - November 13

Caroline

Read, Mary Lucy

1933 - Dec. 28

St. Mary's

Seed, Mary Norma

1930- May 4

Wisconsin

Reed, Matilda W.

1928 - July 17

Montgomery

Reed, Mattie E.

1929 - August 13

Harford

Reed, Mattie E.

1929 - October 1

Talbot

Heed, Merok E.

1930 - January 1.

Baltimore

Reed, Miriam

1931 - December 14

Allegany

Reed, Nettie

1938 - May 4

Anne Arundel

Reed, Nettie
Rebecca

1927 - August 15

Montgomery

Reed, Norah

1932 - September 22

Queen Anne

Reed, "Ore"

1931 - March 21

Baltimore

Reed, Norah

1932 - September 22

Queen Anne

Reed, Nora

1942 - March 21

Baltimore

Reed, Mary Virginia

1929 - June 25

Washington

Reed, Quintus H.

1927 - May 17

Allegany

Need, Rhoda Ann

1930 - August 29

Caroline

Reed, Richard H.

1989 - June 9

Montgomery

Reed, Robert O.,

1924 - Dec. 16

Frederick

Need, Roy J.

1938 - December 29

Washington

Reed, Ruben

1930 - January 7

Allegany

Reed, Sallys Adams

1933 - October 4

Frederick

HOOD, SARAH A.

1931 - March 1

Montgomery

Reed, Simon Henry
Jr.

1930 - July 13

Washington

Reed, Susan Baldwin

1927 - January 1

Montgomery

Reed, Susan Smith

1932 - June 6

Washington

Reed, Susie

Elizabeth



1939 - March 6

Calvert

Reed, Sylvia Arlene

1984 - Feb. 3

Washington



Reed, Sylvester

1925 .. November 5

Montgomery

Reed, Theodore W.

1927 - February 23

Coc11

Reed, Thomas S.

1931 .. October 24

Baltimore

Reed, Trevalion

1934 - Aug. 31

Kont

Reed, Virginia

1927 - February 4

Anne Arundel

Reed, Walter Edward

1930 - September 28

Montgomery

Reed, Wanda Lucille

1926 - September 28

Washington

Reed, Wesley

1928 - May 2

Woomioo

Reed, Willard S.

1928 - February 18

Talbot

Reed, William

1933 - February 11

Dorchester

Road, William

1932 - January 21

Allegany

Reed, William J.

1927 - November 19

Cecil

Reed, William W.

1932 - June 21

Washington

Reeder, Clemenou E.

1925 - March 9

Coil

Reeder, Ernest
Cameron

1931 - August 20

Coil

Reeder, Ernest Walter
Jr.

1931 - June 25

Frederick

Reeder, Georgetown

1927 - October 21

Washington

Reeder, Grover C.

1929 - February, 21

Coil

Reeder, Helen V.

1926 - September 16

Frederick

Reeder, Howard B.

1933 - January 30

Harford

Reeder, John F.

1926 - January 17

St. Mary's

Reeder, Jos
McCullough

1931 - February 10

St. Mary's

Reeder, Lydia J.

1925 - May 3

Wiconico

Reeder, Marion
Grant

1930 - May 28

Washington

Reeder, Mary Ann

1931 - January 8

Frederick

Reeder, Mary Emma

1934 - April 2

Cecil

**Reeder, Maurice
Curtis**

1929 - October 31

Cecil

Reeder, May Dallam

1930 - November 16

St. Mary's

Reeder, Melvin Jr.

1928 - April 30

Washington

Reeder, Merle Walter

1928 - July 9

Washington

Reeder, Robert

1934 - July 1

St. Mary's

Reeder, Robert
Eugene

1926 - October 14

Washington

Reeder, Samuel
Vinton

1925 - September 5

Washington

Reeder, Sarah W.

1929 - May 25

Washington

Reeder, Susan J.

1925 - November 6

Washington

Reeder, Thos.

1926 - September 7

St. Mary's

Reedin, Maria

1928 - October, 30

Prince George

Reedy, Elizabeth
Clendinning

1925 - November 1

Allegany

Reedy, James

1927 - March 28

Coil

Reedy, Mary Edith

1925 - February 13

Washington

Reedy, Nancy K.

1933 - January 12

Co011

Reef, Barbara

1928 - May 2

Baltimore

Reel, Annie C.

1933 - January 1,

Washington

Reel, Benjamin

1926 - April 24

Washington

Reel, Carrie B.

1933 - November 17

Washington

Reel, Charles H.

1938 - January 24

Washington

Reel, David
Sanger

1927 - February 24

Talbot

Reel, Elaine

1933 - July 1,

Allegany

Reel, Elizabeth C.

1924 - May 27

Prince George

Reel, Frances
Bernotta

1934 - March 1937

Washington

Reel, Genevieve M.

1934 - April 10

Allegany

Reel, Herbert L.

1925 - August 2

Washington

Reel, James

Fulton

1927 - December 5

Prince George

Reel, Joanna

1987 - March 5

Washington

Reel, Leonard

1927 - June 3

Washington

Reel, Nettie

Vanett.

1927 - November 10

Prince George

Reel, Pearl H.

1931 - January 3

Washington

Reel, Russell E.

1932 - March 9

Allegany

Reel, William
Kutherford

1931 - September 29

Allegany

Reeley, Annie R.

1928 - November 4

Howard

Reeley, Cecil Estelle

1926 - September 7

Howard

Reeley, David

1983 - October 18

Howard

Reeley, Mary M.

1928 - July 16

Prince George

Reeling, Amanda H.

1933 - April 3

Baltimore

Keely, Maynard
Keith

1929 - January 23

Howard

Rees, David J.

1929 - January 16

Cecil

Rees, Fannie Agnes

1927 - July 15

Charles

Rees, Frank

1928 - July 28

Talbot

Reese,

1934 - Sept. 1.

Washington

Reese,

1980 - November 24

Talbot

Nease,

1933 - May 18

Comanche

Reese, Alice E.

1932 - March 12

Kent

Reese, Anna M.

1927 - January 13

Baltimore

Roose, Annie E.

1930 - August 1

Baltimore

Reese, Ariel

1932 - December 15

Baltimore

Reese, Blair

1924 - July 2

Allegany

Reese, Charles
Edward.

1926 - November 25

Carroll

Reese, Charles Wm.

1926 - June 16

Kent

Reese, Charles B.

1930 - November 3

Washington

Reese, Clement M.

1931 - December 12

Baltimore

Roose, Clemmie Ida

1929 - July 30

Baltimore

Reese, Denton

1928 - June 4

Carroll

Hess, Edmund J.

1930 - February 19

Baltimore

Reyno, Eliza M. [unclear]

1931 - February 1

Washington

Reese, Elizabeth A.

1989 - August 18

Carroll

Reese, Elmer J.

1926 - March 31

Cecil

Reese, Emery Ellis

1928 - June 17

Prince George

Reese, Francis W.

1930 - August 14

Frederick

Reese, John

1934 - April 30

Washington

(See Washington,
Frank)

Reese, Frank Jr.

1926 - November 14

Kent

Reese, Frederick

1930 - November 15

Carroll

Reese, George ?

1926 - July 24

Baltimore

Reese, George W.

1929 - February 15

Baltimore

Reese, Harold
Taylor

1926 - March 17

Coil

Reese, Ida Belle

1927 - October 7

Baltimore

Reese, James
Bucannon

1930 - April 2

Allegany

Reese, James W.

1933 - December 1

Baltimore

Reese, John

1926 - January 31

Baltimore

Reese, Lewis

1926 - July 30

Washington

Reese, Martin Jacob

1933 - January 15

Baltimore

Reese, Mary

Elizabeth

1932 - March 15

Somerset

Reese, Mary Thomas

1929 - June 18

Baltimore

Reese, Neptun

1929 - April 10

Somerset



Reese, Peter M.

1931 - June 12

Baltimore

Reese, Porter

1932 - June 20

Kent

Reese, Regina O.

1927 - April 10

Coil

Roose, Callie M.

1933 - January 11

Somerset

Reese, Sarah

1924 - Sept. 14

Somerset

Reese, Thomas

1926 - August 16

Coil

Reese, Valrie
Glendora

1925 - May 17

Washington

Reese, Virginia Ann

1928 - January 8

Queen Anne

Reese, Wm. Chas.

1928 - November 3

Queen Anne

Reese, William T.

1930- Oct 2

Wicomico

Reese, Alvin D.

1926 - October 24

Frederick

Reese, Annie
Elizabeth

1930 - June 25

Washington

Reeside, William F.

1926 - October 2

Baltimore

Reosing, August

1925 - July 4

Caroline

Roots, Christopher

1931 - September 2

Queen Anne

Reeve, Kate E.

1930 - October 16

Queen Anne

Reever, Ida May

1931 - August 26

Allegany

Reeves, Belle V.

1928 - July 2

Queen Anne

Reeves, Bessie
Catherine

1932 - March 21

Allegany

Reeves, Charles E.

1931 - March 28

Howard

Reeves, Edward D.

1928 - September 5

Prince George

Reeves, Geo. W.

1928 - January 31

Baltimore

Reeve, Janet

1929 - August 23

Harford

Reeves, Katherine

1929 - January 28

Prince George

Reeves, Lillard

BRU 011

1933 - November 15

Co 11

Reeve, Mary Griffin

1926 - December 13

Harford

Reeves, Milton

1925 - January 29

Montgomery

Reeves, Roland Lee

1926 - July 22

Harford

Reeves, Virginia Lee

1927 - June 5

Allegany

Reeves, Wm. Walter

1927 - April 30

Allegheny

Refeetti, Dr. F. Frank

1927 - June 6

Anne Arundel

Reffit, Beulah J.

1931 - May 26

Montgomery

Regan, Earl

1926 - June 8

St. Mary's

Regan, Sam'l. R.

1930 - April 22

Dorchester

Regel, Jacob

1928 - October 18

Allegany

Regel, Johanna

1930 - July 3

Allegany

Reggar, Lydia

1932 - May 12

Carroll

Reggin, Albert Lee

1927 - November 11

Somerset

Register, Ida M.

1933 - October 3

Baltimore

Register, Laura V.

1932 - July 27

Cecil

Rehan, Annie

1925 - October 9

Baltimore

Rehan, Edward

1930 - March 14

Baltimore

Rehbach, Frank
Joseph

1930 - August 30

Baltimore

Rehbein, Mary
Elizabeth

1933 - January 29

Baltimore

Rehenert, Katherine

1933 - January 16

Carroll

Rehuss, Dorothy
Rose

1928 - May 10

Montgomery

Rehling, Henry

1930 - January 2

Baltimore

Rehman, Christine

1926 - February 3

Baltimore

Rehn, Alexander M.

1929 - April 10

Anno Arnoldi

Rehn, Herman

1924 - June 25

Anne Arundel

NOTICE

1931 - JUN 13

BAIT ROOM

Reiber, Hannah

1932 - March 18

Allegheny

Reibert, Ernest

1926 - December ?

Baltimore

Reich, Annie

1930 - July 22

Frederick

Reich, Nellie Lee

1925 - March 3

Frederick

Reichard, W. Scott

1924 - April 6

Washington

Reich, William
Grayson

1928 - November 19

Frederick

Reichard, Alice M.

1929 - January 7

Washington

Reichard, Daniel W.

1930 - June 9

Washington

Reichard, Louise Munk

1933 - January 31

Washington

Reichard, Robert
Howard

1926 - February 24

Washington

Reichel, Frederick

1929 - December 13

Baltimore

Reichert, Amelia F.

1925 - March 1

Baltimore

Reichert, Anna

1926 - August 10

Baltimore

Reichert, Charles F.

1929 - December 1

Baltimore

Reichert, Edward W.

1931 - December 25

Baltimore

Reichert, Joseph J.

1924 - August 23

Allegany

Reichert, Philip

1933 - November 8

Baltimore

Reichert, Thomas

1931 - March 17

Multi core

Reichter, Kathrine
Anna

1925 - September 21

Garrett

Reid,

1925 - July 31

Dorchester

Reid,

1930 - July 6

Culvert

Reid,

1933 - December 21

Wicomico

Reid, Ada S.

1930 - March 23

Cecil

Reid, Anna

1927 - March 21

Montgomery

Reid, Beulah

1933 - September 10

Harford

Reid, Cetherine Mar-
garet

1933 - August 2

Baltimore

Reid, Edward Lee

1924 - Oct. 19

Frederick

Reid, Elizabeth Ann

1929 - August 26

Somerset

Reid, Elizabeth Hill

1928 - July 3

Anne Arundel

Reid, Francis

1932 - January 15

St. Mary's

Reid, George

1928 - December 31

Talbot

Reid, George W.

1925 - November 14

Baltimore

Reid, Hannah

Catherine

1932 - May 13

Wicomico

Reid, Hannibal H.

1926 - October 21

Dorchester

Reid, Helen M.

1938 - April 19

Washington

Reid, James R.

1930 - March 31

Princo George

Reid, James W.

1931 - April 24

Washington

Reid, J. Alfred

1932 - June 18

Allegany

Reid, Jennie E.

1928 - January 11

Talbot

Reid, John

1933 - May 5

Anne Arundel

Reid, John LeRoy

1938 - August 17

Carroll

Reid, John Lewis

1926 - February 24

Worcester

Reid, Joseph W.

1932 - October 2

Homeret

Reid, Julia Ellen

1928 - October 30

Baltimore

Reid, Laura

1931 - November 14

Montgomery

Reid, Lemon

1931 - May 1

Anne Arundel

Reid, Levin C.

1925 - December 2

Caroline

Reid, Lewis J.

1933 - May 1

Washington

Reid, Iola W.

1929 - January 5

Talbot

Reid, Margaret M.

1934 - April 10

Prince George

Reid, Marjorie
Ramsay

1928 - April 19

Baltimore

Reid, Melvin G.

1927 - August 8

Wicomico

Reid, Nathaniel

1924 - November 17

Baltimore

Reid, Nettie

1938 - December 14

Anne Arundel

Reid, Ruth Katherine

1931 - May 28

Frederick

Reid, Ruth Margaret

1925 - January 6

Montgomery

Reid, Sarah Emma

1926 - January 23

Dore..oster

Reid , Sewell

1931 - April 18

Dorchester

Reid, Violet

1928 - September 22

Howard

Reid, Virgil A.

1926 - August 20

Montgomery

Reid, William F.

1929 - May 11

Anne Arundel

Reid, William G.

1933 - August 2

Harford

Reidel, Isabelle

1930 - April 24

Washington

Reider, Josephine

1928 - April '7

Allegany

Reidler, Christina

1928 - March 16

Allegany

Reidler, Ralph

1924 - November 23

Allegany

Reidt, Amelia

1933 - June 17

Baltimore

Reier, Susanna

1929 - January 9

Prince George

Reiff, Elizabeth H.

1925 - December 15

Washington

Reiff, Jacob H.

1928 - June 12

Washington

Reifsnider, Evelyn

1933 - July 8

Charles

Reifsnider, Ann
Virginia

1932 - April 2

Frederick

Reifanider, Birnie

1928 - September 7

Frederick

Reifenider, Elsie

1926 - November 24

Frederick

Reifsnider, Emma W.

1928 - January 4

Carroll

Reifenider, Florence
E.

1930 - May 11

Carroll

Reisenider, Kentor

1929 - June 29

Frederick

Reifenider, Mary
Cecelia

1926 - January 9

Frederick

Reifenyder, Carl

1929 - October 16

Anno Arundel

Reifsnyder, Vera
Elizabeth

1926 - March 30

Baltimore

Reigers, Ida H.

1989 - August 24

Montgomery

Reighard, Clara Bel

1928 - January 13

Allegany

Reightler, Kathleen

1933 - January 14

Baltimore

Reightlor, Tabitha

1924 - Aug. 30

Howard

Reigle, Alvinda G.

1930 - August 30

Anne Arundel

Reigle, George A.

1932 - April 8

Montgomery

Reigle, Mary Eliza

1933 - March 8

Anne Arundel

Reign, Edward L.

1932 - November 12

Baltimore

Reil, Philip C.

1926 - April 18

Talbot

Rolley, George W.

1928 - January 30

Washington

Reilly, Reuben T.

1933 - July 24

Carroll

Reilly, Annie K.

1926 - January 30

Washington

Reilly, Helen

Marie

1926 - January 11

Prince George

Kelley, Margaret E.

1929 - June 27

Baltimore

Reilly, Margaret T.

1931 - May 8

Prince George

Reilly, Robert J.

1932 - September 29

Coil

Reilly, Willie L.

1925 - March 7

Baltimore

Rilly, Alice Maria

1926 - June 2

Prince George

Reiman, Annie E.

1924 - July 19

Allegany

Reiman, Emma

1927 - January 3

Baltimore

Reimer, Joseph

1930 - August 15

Baltimore

Rein, Sister Mary
Roena

1925 - August 12

Baltimore

See Sister, Mary
Roena Rein

Reindollar, Mary C.
1931 - September 23
Carroll

Reindollar, Mollie C.

1931 - January 11

Carroll

Reindollar, Newton
Augustus

1924 - March 29

Carrol

Reinecke, John:
William

1926 - November 10

Carroll

Reinecker, Fannie V.

1932 - October 31

Baltimore

Reineke, Fredrick

1925 - March 3

Baltimore

Reiners, Adoluid

1929 - May 21

Baltimore

Reinert, Christopher
Fr 14

1938 - July 20

Kent

Reinhard, Anna M.

1932 - February 29

Allegany

Reinhardt, Charles
F. A.

1924 - November 24

Baltimore

Reinhardt, Dora M.

1933 - July 21

Baltimore

Reinhardt, Emma

1929 - February 4

Baltimore

Reinhardt, John Fred

1932 - February 19

Garrett

Reinhardt, Mary

1933 - November 9

Anne Arundel

Reinhardt, Mary E.

1926 - October 7

Baltimore

Reinhart, Bernadette

1933 - January 26

Allegany

Reinhart, Boyd A.

1940 - November 28

Allegany

Reinhart, George S.
Jr.

1926 - February 23

Baltimore

Reinhart, Mary

1927 - March 6

Allegany

Reinhart, Nelda

1928 - March 18

Allegany

Reinhold, LeRoy

1924 - December 17

Baltimore

Reinhold, Maggie
Bell

1925 - November 1

Baltimore

Reinhold, William C.

1920 - August 18

Baltimore

Reisig, William

1931 - May 24

Baltimore

Reinko, Herman G.

1951 - September 3

Carroll

Reintzel, Carrie Edna

1930 - October 2

St. Mary's

Reintzell, Sarah A.

1931 - January 7

St. Mary's

Reisinger, Martha

1933 - April 1

Baltimore

Reisinger, William
Henry

1952 - December 25

Reisner, May L.

1932 - March 17

Washington

Ro 10018, Anna Wally

1930 - December 20

Reisig, Michael A.

1927 - November 17

Allegheny

Reist, John Henry

1929 - November 18

Baltimore

Reistetter, George M.

1938 - June 23

Baltimore

Reistetter,
Josephine

1925 - August 31

Baltimore

Reiter, Mary

1931 - November 7

Baltimore

Reiter, Theodore

1925 - September 24

Carroll

Reith, Anna M.

1927 - May 29

Allegany

Reith, Margaret

1925 - May 26

Allegany

Reith, Neal C.

1924 - September 8

Allegany

Not to be used for any other purpose.

1971 - February 3

Washington

Reitinger, Miran R.

1927 - June 18

Washington

Reitmaier, Barbara

1932 - June 4

Allegany

Reitmueller, Henry E.

1933 - January 23

Baltimore

Reitz, August

1925 - October 6

Harford

Reitz, William

1924 - February 29

Baltimore

Reitze, Adoluidn J.

1920 - March 13

Baltimore

Roland, Ellis

1929 - January 1

Anne Arundel

Relihan, Sister
Agnes Elizabeth

1925 - July 17

Frederick

(See Sister Agnes
Elizabeth Relihan)

Remare, Mary Wirth

1927 - November 1

Baltimore

Rembold, Anna

Matilda

1931 - July 25

Harford

Rembold, John

1938 - October 15

Harford

Rembold, Lula

1925 - November 10

Harford

Rembold, Mary
Elisabeth

1929 - October: 13

Harford

Rembold, Roth
Bernard

1926 - July 9

Harford

Remer, John

1931 - May 8

Anne Arundel

Renick, Maxmillian

1932 - April 23

Coil

Remington, Harrett
Gipson

1927 - January 11

Baltimore

Remington, Harrett
Cipson

1927 - January 11

Baltimore

Rommels, Carl Atha

1928 - July 12

Baltimore

Remmels, Emma J.

1930 - February 10

Baltimore

Rommelle, Mark Brice

1928 - November 18

Baltimore

Remora, Mary Eliz-
abeth

1933 - September 27

Anne Arundel

Rensberg, Emma V.

1931 - September 1

Frederick

Rensberg, Harvey

1931 - November 13

Frederick

Rensburg, Amos A.

1929 - April 17

Frederick

Rensburg, Annie A.

1931 - April 13

Frederick

Rensberg, Kathleen

1924 - April 83

Frederick

Kemsburg, Celinda
#744014

1926 - February 13

Washington

Rensburg, Effie

1931 - Februar, 26

Frederick

Rensburg, Emory
Calvin

1932 - June 10

Frederick

Rensburg, Frances
Ellen

1925 - February 13

Frederick

Rensburg, Frances
L.

1928 - January 31

Frederick

Rosenburg, Henry C.

1929 - January 18

Frederick

Rensburg, Joseph H.

1932 - November 10

Washington

Rensburg, Lewis C.

1927 - October 1

Washington

Rensburg, Phyllis
Catherine

1927 - March 28

Washington

Rensburg, Samuel
Young

1931 - July 17

Montgomery

Rensbury, Peter
William

1934 - April 15

Washington

Romson, Charles
Edgar

1932 - November 19

Baltimore

Remsen, Margaret

1936 - September 28

Montgomery

Rencher, Annie S.

1929 - Februar, 12

Woomioo

Rencher, Elizabeth

1928 - October 12

St. Mary's

Rencher, William J.

1925 - November 28

Montgomery

Rendes, Joseph

1930 - February 16

Baltimore

Renehan, Eleanor
Mary

1924 - July 17

St. Mary's

Renehan, Mary Louise

1930 - December 8

Baltimore

Renn, (Twin #1)

1930 - September 7

Frederick

Renn, (Twin #2)

1930 - September 8

Frederick

Henn, Annie Cobb

1930 - December 18

Howard

Renn, Annie E.

1927 - January 18

Carroll

Kenn, Charles
Edward

1926 - June 7

Washington

Renn, Charles Luther

1931 - February 14

Frederick

74
Renn, Norman
Lindsay

1929 - February 25

Howard



Ronnu, Philip W. G.

1931 - March 20

Baltimore

1045
Renneberger, Richard
L.

1925 - July 19

Washington

Renneker, Fl: Louise

1933 - June 3.

Carroll

Renner,

1925 - July 3

Washington

1953 - August 12

Washington

Renner, Ada W.

1926 - January 5

Washington

Renner, Alvina

1925 - January 5

Baltimore

Renner, Catherine

1924 - Dec. 17

Frederick

Renner, Charles E.

1930 - August 4

Frederick

Renner, Conrad
Charles

1936 - January 11

Carroll

Renner, Edwin Thomas

1932 - December 23

Washington

Renner, Ell W.

1932 - July 12

Washington

Renner, Frances A.

1932 - March 19

Washington

Renner, Frisby A.

1934 - Jan. 18

Washington

Renner, George I.

1933 - June 21.

Forester

Renner, James M.

1929 - November 13

Washington

Renner, James T.

1925 - January 6

Washington

Renner, Ketic
Rebecca

1927 - April 10

Washington

Renner, Lucille
Doreas

1927 - October 8

Washington

Renner, Margaret

1938 - March 18

Washington

Kenner, Minnie
Florence

1926 - July 28

Washington

Kenner, Nina

Virginia

1926 - December 6

Washington

Renner, Robert
William

1925 - July 19

Washington

Renner, Samuel J.

1924 - May 31

Carroll

Kenner, William A.

1926 - December 29

Washington

Renner, William

Henry

1932 - February 19

Washington

Rennie, Alexander

1924 - July 11

Allogny

Rennie, James

Lookard

1925 - July 25

Allegany

Renninger, Harry D.

1928 - January 5

Worcester

Renniger, Julius
Christian J.

1930 - August 14

Current

Renno, Ella E.

1926 - December 30

Wicomico

Rennou, Walter

1931 - April 11

Prince George

Rennolds, Mary

1930 - March 29

Anne Arundel

Reno, Robert Bruce
Mowery

1927 - December 29

Washington



Reynolds, Andrew

1931 - January 3

Dorchester

Renoide, Francoo
Genovo

1927 - March 3

Howard

Renouf, Arthur

1929 - October 25

Baltimore

Renshaw,

1930 - February 10

Somerset

**Rushaw, Edwin
Thomas**

1931 - September 10

Wiconico

Renshaw, Harvey M.

1931 - January 16

Talbot

Renshaw, Irma

1933 - November 8

Somerset

Renshaw, Susannah

1933 - November 16

Somerset

Renshaw, Mrs. Wm. T.

1925 - December 3

Somerset

Renshow, Doris

1931 - December 1

Somerset

Rentch, George W.

1931 - February 9

Washington

Renshaw, Stanley
Hilton

1932 - October 13

Wicomico

Rentzell, Obadi

1925 - December 8

Frederick

Rentzell, Obadiah

1925 - December 8

Frederick

Rentnell, William
Paker

1933 - January 19

Baltimore

Renz, Margaret

1930 - January 21

Carroll

Rooms

1927 - April 16

Garrett