


-
Madara, J. Chas.

1927 - November 5

Caroline



Madara, Mary Anne

1924 - January 31

Caroline

Madary, Annie R.

1932 - June 8

Anne Arundel

Madary, Rosana J.

1924 - April 7

Baltimore

Madas, Earl P.

1930 - December 21

Frederick

Mađđarn, Mary C.

1928 - December 31

Washington

Maddax, Lizzie

1931 - October 6

Somerset

Madden, Annie Marie

1932 - December 28

Allegany

Madden, Calvin


1929 - March 2

Cecil

Madden, Elizabeth
Serena

1932 - June 23

Frederick .



Madden, Jacob

1932 - November 29

Talbot

Madden, James

1924 - February 5

Baltimore

Madden, Jerry Lee

1930 - October 12

Somerset

Madden, John

1929 - June 24

Baltimore

Madden, Joseph L.

1930 - January 4

Prince George

Madden, Rita N.

1924 - Aug. 11

Frederick

Madden, Samuel
Franklin

1932 - April 9

Carroll

Maddex, Mary
Norman

1928 - February 8

St. Mary's

Maddock, Augustus
Tomlson

1933 - July 24

Baltimore

Maddox

1925 - January 5

Somerset

Maddox,

1924 - July 9

Somerset

Maddox

1926 - December 5

Baltimore

Maddox

1928 - June 24

Somerset

Maddox

1928 - April 2

Dorchester

Maddox,

1931 - May 9

Somerset

Maddox, Albert S.

1924 - May 17

Somerset

Maddox, Alice Morris

1925 - July 7

Worcester

Maddox, Andrew

1928 - May 26

Dorchester

Maddox, Annie
Elizabeth

1928 - June 7

Somerset

Maddox, Arthur

1929 - June 15

Somerset

Maddox, Benjam T.

1924 - Aug. 13

Somerset

Maddox, Charles A.

1932 - June 28

Charles

See Smallwood

Maddox, Charles B.

1929 - January 16

Wicomico

Maddox, Charles
Franklin

1930- Jan 13

Wicomico

**Maddox, Charles
Howard**

1928 - February 8

Somerset

Maddox, Charles W.

1928 - March 18

Somerset

Maddox, Clarence D.

1931 - June 25

Charles

Maddox, Dorothy

1925 - August 23

Somerset

Maddox, Dorothy
Louise

1930 - April 16

Montgomery

Maddox, Dorothy
Veronica

1933 - September 20

Charles

Maddox, Edith

1924 - Sept. 30

Somerset

Maddox, Edna

1930 - February 21

Carroll

Maddox, Elizabeth

1928 - August 3

Dorchester

Maddox, Elizibith

1925 - October 6

Somerset

Maddox, Essie

1930 - April 19

Somerset

Maddox, Eugene

1926 - May 16

Charles

Maddox, Eva Walton

1929 - June 9

Somerset

Maddox, Fannie Anna

1929 - October 6

Baltimore

Maddox, Frank W.

1932 - September 11

Somerset

Maddox, Fred

1930 - July ?

Somerset

Maddox, Geo. Edward

1930 - November 6

Somerset

Maddox, George
Randolph

1928 - December 5

Somerset

Maddox, George W.

1928 - September 14

Somerset

Maddox, Georgiannia

1925 - May 20

St. Mary's

Maddox, Henry Clay

1932 - June 23

Charles

Maddox, James F.

1926 - November 9

Charles

Maddox, James Grover
Jr.

1925 - February 27

Worcester

Maddox, Jason

1930- April 9

Wicomico

Maddox, Jennie May

1928 - October 14

Worcester

Maddox, John

1925 - May 12

Somerset

Maddox, John
Cornelius

1930 - November 29

St. Mary's

Maddox, John Thomas

1932 - April 23

Prince George

Maddox, John

William

1927 - May 26

Charles

Maddox, Joseph

1925 - May 10

Somerset

Maddox, Joseph

1926 - September 22

Talbot

Maddox, Joseph

1926 - February 14

Somerset

Maddox, Laura

1931 - April 29

Somerset

Maddox, Lawrence

1924 - July 30

Somerset

Maddox, Legard

1932 - April 30

St. Mary's

Maddox, Lizzie

1929 - August 26

Somerset

Maddox, Lottie

1928 - June 26

Somerset

Maddox, Luicinder

1926 - January 3

Somerset

Maddox, Major

1924 - June 13

Dorchester

Maddox, Maria

1933 - December 7

Somerset

Maddox, Martha

1927 - December 17

Somerset

Maddox, Mary

1925 - October 15

Worcester

Maddox, Mary

1931 - July 1

Somerset

Maddox, Mary
Catherine

1930 - November 14

St. Mary's

Maddox, Mary V.

1929 - December 6

Somerset

Maddox, Maurice
Henderson

1928 - September 8

Dorchester

Maddox, Michael

1930 - January 25

Harford

Maddox, Minnie

1933 - September 15

Somerset

Maddox, O. Wendall

1926 - January 19

Somerset

Maddox, Rebecca D.

1924 - Aug. 14

Charles

Maddox, Rebena

1924 - July 29

Somerset

Maddox, Robert

1929 - April 7

Somerset

Maddox, Robert E.

1929 - June 2

Somerset

Maddox, Robert H.

1930 - June 26

Somerset

Maddox, Rose

1925 - November 16

Somerset

Maddox, Sally Jane

1929 - August 9

Somerset

Maddox, Samuel

1925 - August 20

Somerset

Maddox, Samuel J.

1932 - January 17

Worcester

Maddox, Samuel W.

1929 - November 15

Montgomery

Maddox, Sara

Elizabeth

1930 - July 16

Dorchester

Maddox, Virginia
Lomax

1931 - May 11

Carroll.

Maddox, Warner

1932 - August 17

Anne Arundel

Maddox, Waters
Sylvester

1928 - April 22

Somerset

Maddox, William

1929 - December 15

Talbot

Maddox, William A.

1931 - April 19

St. Mary's

Maddox, William
Oliver

1929 - October 28

Queen Anne

Maddrix, Ellwood S.

1926 - February 1

Somerset

Maddrix, Isaac
Herman

1931 - February 18

Somerset

Maddrix, Jean

1928 - March 12

Somerset

Maddrix, Mary Jane

1926 - November 8

Somerset

Maddux, Clifford
Bartlett

1926 - October 13

Prince George



Maddux, Ernest
Lincoln

1925 - August 23

Queen Anne

Madel, Frank

1929 - November 9

St. Mary's

Maden, John

1927 - August 5

Allegany

Mades, Annet Ettie M.

1929 - June 7

Washington

Madigan,

1928 - April 13

Garrett

Madigan ,

1931 - January 19

Garrett

Madigan, Florence
Parsons

1932 - December 19

Montgomery

Madigan, James F.

1925 - July 9

Baltimore

Madison, Aldiea V.

1926 - August 31

Washington

Madison, James

1928 - March 8

Baltimore

Madison, James

1928 - December 14

Anne Arundel

Madl, Ludwig

1929 - May 24

Baltimore

Madlener, Virginia

1928 - August 13

Allegany

Madlock, Dorothy

1930 - May 16

Anne Arundel

Madonna, Enrico

1927 - April 3

Cecil

Madonoski, Mike

1932 - March 9

Baltimore

Madore, Lloyd C.

1932 - February 12

Allegany

Madra, Pauline

1928 - January 18

Anne Arundel

Madron, Ollie

1933 - March 25

Harford

Madsen, Reginald
Christian

1928 - September 8

Baltimore

Maeby, John H.

1933 - January 11

Baltimore

Maemars, Barbara M.

1930 - June 6

Baltimore

Maenke, L. Carl

1931 - January 1

Dorchester

Maenner, Anna

1933 - April 8

Howard

Maenner, Gergrude B.

1927 - December 27

Baltimore

Maeser, Melvin Morgan

1928 - January 30

Baltimore

Maffley, Emma
Louise

1933 - October 7

Allegany

Maffley, Francis

1932 - July 12

Allegheny

Magaha, Allen Reed

1925 - April 21

Frederick

Magaha, David Filmore

1924 - July 1

Allegany

Magaha, Henry

1925 - September 10

Washington

Magaha, Irving
Townsend

1929 - August 23

Frederick

Magaha, Jennie

1932 - November 3

Washington

Magaha, Kate

1928 - September 4

Dorchester

Magaha, Lizzie May

1927 - September 17

Frederick

Magaha, Louise
Anna

1929 - March 16

Allegany

Magaha, Sarah A.

1929 - June 10

Frederick

Magalis, James R.

1925 - January 14

Allegany

Magalis, Richard McK.

1925 - February 1

Frederick

Magalis, Rosa B.

1932 - April 1

Frederick

Magan,

1933 - May 29

Cecil.

See Holland

Magaw, George W.

1929 - December 29

Cecil

Magee, Jerome

1928 - November 20

Montgomery

Magee, Manzella
Smith

1927 - August 14

Caroline

Magee, Mary Edith

1927 - June 25

Caroline

(See Washington)

Magee, Melvin

1925 - September 3

Caroline

Magee, Minnie Keatley

1929 - June 24

Baltimore

Magee, Sarah Jane

1931 - April 6

Queen Anne

Mager, Sister M.
Theresa O.S. B.

1924 - March 29

Caroline

See Sister



Magers, Edna May

1925 - November 14

Baltimore

Magers, James
Thomas

1925 - May 25

Baltimore

Magers, John W.

1926 - July 22

Caroline

Magers, Theolphus

1927 - February 21

Carroll

Maggio, Anna

1925 - May 28

Baltimore

Maggio, Catherine
Josephine

1931 - December 7

Anne Arundel

Magie, Edward R.

1927 - January 20

Montgomery

Magill, James

Gibbons

1932 - July 11

Anne Arundel

Magill, Jane

1930 - November 16

St. Mary's

Magill, John Francis

1931 - April 21

St. Mary's

Magin

1926 - October 10

Carroll

Magin, Charles

1930 - February 14.

Carroll

Magin, Katherine
Elizabeth

1933 - January 9

Carroll

Magin, Ruth
Virginia

1925 - September 15

Carroll

Maginnis, Edward A.

1932 - December 8

Montgomery

Magne, Edwin H.

1928 - November 30

Prince George

Magness, Amanda
Demoss

1926 - November 5

Harford

Magness, Effie C.

1925 - April 18

Harford

Magness, John R.

1926 - June 7

Harford

Magness, John Thomas

1931 - February 7

Harford

Magness, Otho
Elmore

1930 - October 24

Harford

Magno, Joseph

1932 - August 5

Baltimore

Magnoni, Iolanda
Rosa

1924 - Apr. 30

Carroll

Magnus, Alpha
Ione

1928 - May 11

Prince George

Magoffin, Elizabeth
Van Deman

1929 - July 7

Montgomery

Magrogan, John
Sylvester

1929 - May 18

Queen Anne

Magruder

1927 - February 27

Allegany

Magruder, Edward

1931 - September 21

Prince George

Magruder, Edward
H.

1933 - October 13

Anne Arundel

Magruder, Eleanor
Elizabeth

1931 - November 24

Frederick

Magruder, Eliza

1925 - October 2

Carroll

Magruder, Elizabeth

1924 - Jan. 12

Prince George

Magruder, Elizabeth

1924 - Jan. 12

Prince George

Magruder, Eshezkih
Riggs

1926 - March 10

Montgomery

Magruder, Eva
Owings

1925 - November 12

Calvert

Magruder, Frances A.

1928 - January 1

Montgomery

Magruder, Harwood

1925 - August 12

Frederick

Magruder, Hilary
Jr.

1931 - November 4

Montgomery

Magruder, Howard

1924 - Aug. 17

Montgomery

Magruder, Isabella

1925 - June 3

Montgomery

Magruder, Isabella

1929- September 23

Montgomery

Magruder, Isiaac

1932 - June 25

Montgomery

Magruder, Jennie

1928 - March 17

Prince George

Magruder, John

1925 - April 11

Montgomery

Magruder, Juliette
Stella

1930 - August 1

Montgomery

Magruder, Laura C.

1932 - October 25

Montgomery

Magruder, Lizzie

1925 - December 14

Montgomery

Magruder, Margaret

1929- October 13

Carroll

Magruder, Margaret
Catherine

1924 - April 14

Frederick

Magruder, Mary
Middleton

1933 - January 25

Montgomery

Magruder, Maurice W.

1928 - November 15

Montgomery

Magruder, Mollie
Wilson

1932 - March 15

Montgomery

Magruder, Robert P.

1927 - February 24

Montgomery

Magruder, Rubena

1926 - July 7

Calvert

Magruder, William
B.

1925 - March 28

Montgomery

Magruder, Wm.

1932 - August 7

Montgomery

Magruder, Wm.
Rinalder

1925 - January 3

Prince George

Magruder, Zadock

1933 - October 24

Montgomery

Magsamen, Charles
H. R.

1924 - April 21

Baltimore

Maguire, Edward O.

1928 - September 23

Dorchester

Maguire, Elizabeth
A.

1925 - October 28

Harford

Maguire, Julia W.

1932 - December 20

Dorchester

Maguire, Margaret

1932 - February 23

Allegany

Maguire, Mary

1924 - July 21

Baltimore

Maguire, Michael

1930 - November 5

Montgomery

Maguire, Patrick

1929 - May 1

Baltimore

Maguire, Prudella Lee

1931 - January 23

Prince George

Maguire, Ralph J.

1930 - May 27

Cecil

Magwert, George

1924 - Dec. 5

Howard

Mahaffey, Caro F.

1926 - June 22

Garrett

**Mahaffey, James
Ray**

1929- November 25

Garrett

Mahammett, Carrie
E.

1927 - April 4

Frederick

Mahan, Angelina V.

1925 - March 22

Harford

Mahan, Ann

1929 - November 11

Baltimore

Mahan, Dorothy Emma

1929 - October 30

Somerset

Mahan, Fannie A.

1924 - Jan. 1

Harford

Mahan, George
Walter

1928 - September 30

Cecil

Mahan, Harry

1932 - December 15

Cecil

Mahaney,

1924 - January 12

Allegany



Mahaney, Charles
Edw.

1930 - August 15

Allegany

Maharg, Ida Rosella

1928 - September 10

Baltimore

Maher, Frederick B.

1927 - March 27

Howard

Maher, Grace

1924 - December 7

Anne Arundel

Maher, Mary

1924 - Oct. 28

Prince George

Mahle, Lillian

1932 - May 16

Harford

Mahn, Frank

1929 - December 20

Baltimore

Mahn, *Wilhelmine* L.

1926 - June 30

Howard

Mahon,

1930 - October 1

Baltimore

Mahon, Ada

1928 - June 28

Howard

Mahoney, Alexander

1929 - May 24

Cecil

Mahoney, Andrew V.

1926 - March 31

Charles

Mahoney, Ann J.

1929 - March 30

Cecil

Mahoney, Edward

1929 - March 30

Cecil

Mahoney, Edward P.

1927 - December 14

Cecil

Mahoney, Elizabeth H.

1931 - February 11

Cecil

Mahoney, Ellen Terry

1925 - July 17

Cecil

Mahoney, Gwynett

1928 - September 13

Prince George

Mahoney, Jeremiah

1926 - January 2

Cecil

Mahoney, John E.

1931 - July 27

Prince George

Mahoney, John H.

1925 - September 16

Frederick

Mahoney, John Henry

1930 - July 12

Anne Arundel

Mahoney, John
Joseph

1926 - December 12

Frederick

Mahoney, John Robert

1931 - July 19

Cecil

Mahoney, Joseph B.

1925 - October 7

Cecil

Mahoney, Martha E.

1924 - July 31

Prince George

Mahoney, Michael

1929 - July 5

St. Mary's

Mahoney , Rose E. M.

1931 - April 16

Frederick

Mahoney, Rosie

1933 - September 17

Queen Anne

Mahoney, Thomas

1925 - April 11

Carroll

Mahoney, Thomas H.

1929- October 19

Prince George

Mahoney, William E.
Sr.

1925 - June 14

Baltimore

Mahool, Estie

1924 - Dec. 31

Montgomery

Maile, Hanse

1931 - October 31

Prince George

Main, Albert

1925 - June 21

Frederick

Main, Carlton H.

1927 - May 7

Frederick

Main, Charlotte
Emerson

1931 - March 26

Prince George



Main, Charlotte
Louise

1928 - April 2

Washington



Main, Clara Virginia

1953 - June 13

Frederick

Main, Clarence V.

1925 - December 25

Frederick

Main, Clarence Z.

1931 - April 3

Frederick

Main, David I.

1930 - June 16

Howard

Main, Elmer Elwood

1931 - January 13

Wicomico

Main, George D.

1933 - December 16

Frederick

Main, George
Washington

1930 - November 3

Washington

Main, Harold

1927 - February 21

Frederick

Main, John Calvin

1925 - February 19

Frederick

Main, Laura V.

1929 - February 26

Howard



Main, Martin L.

1924 - Dec. 16

Washington

Main, Mary Constance

1933 - March 17

Frederick

Main, Sabeus B.

1932 - April 14

Washington

Main, Sarah Ann
Marie

1927 - January 31

Frederick

Main, Sophia B.

1924 - Jan. 18

Frederick

Main, William
Franklin

1930 - December 29

Frederick

Maine, George
Calvin

1930 - August 19

Frederick

Maine, Hettie
Elizabeth

1924 - Feb. 24

Frederick

Maine, Joshua H.

1929 - December 25

Frederick .

Maine, Sarah Ellen

1932 - October 2

Frederick

Mainhart, Jacob M.

1931 - August 15

Frederick

Mains, Dorothy

1928 - August 31

Anne Arundel

Mair, Alexander

1929 - May 20

Talbot

Mair, Annie Olivia

1933 - March 9

Kent

Mairose, Margaret E.

1924 - March 22

Baltimore

Maisack, Lula M.

1932 - January 23

Washington

Maisel, Christian
Sr.

1924 - April 13

Baltimore

Maisel, Frederick
Sr.

1925 - January 5

Baltimore

Maisel, Ferdinand
W.

1926 - April 19

Baltimore

Maisel, Henry F.

1924 - May 14

Howard

Maisel, John Andrew

1931 - December 21

Baltimore

Maisel, Mary
Elizabeth

1928 - December 29

Frederick

Maisick, Lydia E.

1931 - April 4

Washington

Maisler, William

1932 - March 3

Harford

Maison, Margrett

1924 - Oct. 22

Montgomery

Maison, Sarah

1928 - May 17

Montgomery

Maitland, Genevieve

1933 - July 12

Allegany

Majchrzak, Casimir

1931 - June 18

Baltimore

Majerowicz, Mary

1924 - April 4

Anne Arundel

Majestic, George

1925 - July 15

Baltimore

Majka, Anna

1932 - September 1

Cecil

Major, Annie

1931 - March 21

Queen Anne

Major, Elworth

1932 - December 30

Anne Arundel

Major, George

1930 - October 28

Carroll

Major, Helen W.

1933 - July 17

Allegheny

Major, James

1930 - March 3

Allegany

Major, Lillie V.

1925 - October 26

Dorchester

Majors, Francis B.

1930- April 3

Wicomico

Majors, Ira S.

1929 - August 2

Wicomico

Majors, James E.

1924 - Nov. 9

Wicomico

Majors, James M.

1925 - November 28

Wicomico

Majors, Sarah P.

1927 - December 24

Wicomico

Majors, William R.

1924 - April 15

Wicomico

Makel, Henry
Bernard

1925 - December 31

Prince George

Makel, Mary

1929 - April 11

Prince George

· Make 11,

1932 - December 2

Anne Arundel

Makell, John W.

1930 - May 27

Anne Arundel

Makell, John
William

1925 - March 7

Anne Arundel

Makell, Samuel

1933 - August 22

Anne Arundel

Maker, Ernest B.

1932 - December 12

Cecil

Maker, Levi

1932 - December 13

Queen Anne

Maker, Regina

1930 - April 5

Talbot

Maker, Rosanna

1929 - September 26

Prince George

Makinson, Jane Agnes.

1931 - September 3

Howard

Makinson, Martha C.

1924 - Oct. 25

Cecil

Makle, Marie

1933 - August 8

Charles

Makovsky, Mary M.

1931 - December 13

Montgomery

Malambre, Roy
Cruzen

1928 - May 22

Prince George

Malamphy, Anna
Marie

1929 - October 8

Allegany

Malamphy, Thomas B.

1927 - January 26

Frederick

Malanga, Lawrence

1932 - May 19

Cecil

Malcolm, Nellie

Allen

1932 - January 21

Kent

Malcom, Revell
Stanley

1931 - May 13

Washington .

Malcomb, Joe

1931 - September 20

Allegheny

Malcomb, Thomas

1924 - Feb. 16

Wicomico

Maldeis, Elizabeth

1932 - November 27

Baltimore

Maldeis, George

1930 - September 18

Baltimore

Male, Sarah

Margret

1933 - November 15

Allegany

Male, Winton R.

1927 - June 18

Baltimore

Males

1931 - December 16

Allegany

Males, Charles
Edward

1924 - July 5

Harford

Males, Clara
Levenia

1925 - February 12

Carroll

Males, Critie Louise

1931 - March 4

Allegany .

Males, Elmer Junior

1930 - September 29

Baltimore

Males, Martha
Virginia

1927 - November 12

Baltimore

Maleski, Frances

1925 - February 9

Anne Arundel

Malickson, Norris J.

1929- March 13

Montgomery

Malin

1933 - July 8

Cecil

Malinonsky, John

1927 - April 14

Baltimore

Malkens, Dora

1928 - March 29

Baltimore

Mallalien, Julia
Ann

1924 - March 12

Kent

Mallalieu, Marye

1925 - November 6

Baltimore

Mallalieu, Sallie
Warner

1928 - March 21

Kent

Mallalieu, Sarah E.

1926 - April 27

Carroll

Mallery, Lulu
Pitman

1926 - May 27

Prince George

Mallin, Charles

1931 - June 5

Allegany

Mallingley, Junie
Rebecca

1929 - January 12

Charles

Mallohan, Jane
Catherine

1931 - February 2

Montgomery

Mallon, Joseph H.

1930 - September 12

Kent

Mallonee, Alethia

1926 - June 2

Carroll

Mallonee, Anna Mary

1925 - September 18

Baltimore

Mallonee, Annie B.

1930 - February 2

Baltimore

Mallonee, Josias

1930 - June 5

Baltimore

Mallonee, Lavinia

1932 - August 18

Baltimore

Mallonee, Mary
Margaret

1928 - March 2

Baltimore

Mallonee, Oliver
Winfield

1930 - August 1

Prince George

Mallonee, William E.E

1930 - September 26

Anne Arundel

Mallooly, Margaret

1931 - June 11

Baltimore

Mallory, Catherine

1928 - December 9

Baltimore

Mallote, Ester Ann

1929 - January 8

Washington

Malloy,

1929 - May 13

Kent

Malloy, Bettie J.

1925 - November 1

Allegany

Malloy, John Betts

1931 - September 2

Prince George

Malloy, Joseph

1925 - August 21

Allegany

Malloy, Susan

1928 - October 6

Allegany

Malloy, Thomas H.

1930 - February 22

Kent

Malloy, Thos. J.

1932 - July 24

Anne Arundel



Malone

1925 - December 5

Frederick

Malone, Amy

1928 - January 8

Wicomico

Malone, Ann B.

1933 - September 4

Wicomico

Malone, Anne

1932 - May 7

Wicomico

Malone, Anthony

1927 - June 9

Anne Arundel

Malone, Beatrice J.

1932 - November 18

Wicomico

Malone, Burr B.

1927 - November 9

Allegany

Malone, Christopher
C.

1927 - November 8

Allegany

Malone, Clifton W.

1930- June 26

Wicomico

Malone, David
Wiseman

1932 - July 11

Frederick

Malone, Earl Franklyn

1924 - October 23

Allegany

Malone, Edwin

1924 - March 4

Wicomico

Malone, Eliza

1924 - August 2

Carroll

Malone, Eliza

1930 - October 28

Allegany

Malone, Elizabeth

1924 - Feb. 3

Wicomico

Malone, Elwood
McFadden

1933 - January 8

Wicomico

Malone, Frederick R,

1926 - May 18

Kent

Malone, George

1928 - March 27

Carroll

Malone, Harry
Lafayette

1926 - January 15

Dorchester

Malone, Hartwell
Marion

1925 - March 8

Wicomico

Malone, James K. L.

1926 - April 5

Wicomico

Malone, John

1926 - December 6

Baltimore

Malone, John

1929- August 7

Carroll

Malone, Joseph S.

1926 - February 24

Washington

Malone, Laura A.

1929 - January 10

Wicomico

Malone, Lawrence

1930 - March 4

Harford

Malone, Louis J.

1924 - August 8

Wicomico

Malone, Margaret

1928 - September 18

Allegany

Malone, Mary

1926 - December 31

Baltimore

Malone, Mary
Elizabeth

1925 - December 3

Wicomico

Malone, Minnie F.

1928 - December 29

Wicomico

Malone, Peter A.

1926 - March 25

Wicomico

Melone, Roland

1933 - August 3

Wicomico

Malone, Roseanna

1931 - January 5

Wi comico

Malone, S. F.

1924 - May 5

Wicomico

Malone, Sadie Belle

1924 - June 1

Wicomico

Malone, Thomas W.

1931 - March 27

Wicomico

Malone, Violet
Agather

1924 - February 28

Anne Arundel

Malone, William

1924 - October 17

Allegany

Malone, William

1924 - October 17

Allegany

Malone, William A.

1927 - July 14

Anne Arundel

Maloney, Alice
Jane

1930 - July 26

Caroline

Maloney, Annie

1933 - April 6

Prince George

Maloney, Catherine

1926 - January 15

Carroll

Maloney, Daisy M.

1926 - August 5

Prince George

Maloney, Dena

1929- August 30

Harford

Maloney, Edward B.

1933 - March 13

Carroll

Maloney, James

1924 - June 1

Cecil

Maloney, Lucy

1928 - November 3

Talbot

Maloney, Margaret

1927 - July 19

Anne Arundel

Maloney, Margaret
T.

1924 - July 25

Washington

Maloney, Mary V.

1925 - June 27

Wicomico

Maloney, Norris
Cornelius

1925 - January 20

Prince George

Maloney, Wm. H.

1927 - October 29

Allegany

Malott, Fairy

1925 - March 30

Washington

Malott, Jack Philip

1924 - Sept. 27

Washington

Malott, Pearl L.

1930 - October 6

Washington

Malott, Shirley Mae

1928 - June 22

Washington

Maloy, Frances,

1932 - March 26

Washington

Malsberger, Augustus
H.

1930 - February 7

Kent

Malster, Anna
Laura

1926 - June 19

Cecil

Maltby, Robert

1927 - July 11

Allegany

Malz, William

1924 - Sept. 13

Washington

Mamayek, Sophia
Elizabeth

1927 - February 5

Allegheny

Mamber, Henry

1933 - August 19.

Talbot

Mamrick, Victor
Harrison

1927 - December 6

Frederick

Manahan

1928 - April 6

Frederick

Manahan, Albert
William

1929 - May 1

Baltimore

Manahan, Chas.
Francis

1930 - January 2

Frederick

Manahan, Charles H.

1927 - April 27

Howard

Manahan, Emerson J

1924 - March 15

Carroll

Manahan, Jesse L.

1932 - July 30

Carroll

Manahan, Louis

1926 - June 29

Montgomery

Manahan, Mary

Catherine

1932 - January 15

Carroll

Manakee, John W.

1927 - September 15

Howard

Manceri, Nicolo

1925 - May 17

Cecil

(See Mitchell, Nick)

Mancha, Carolyn

1931 - April 13

Caroline

Mancha, Harry V

1931 - June 9 .

Carroll

Manchay, Henry M.

1932 - November 14

Carroll

Manchey, Ella Clay

1932 - August 8

Carroll

Manck,

1932 - July 4

Prince George

Mancks, Charles
Alvin

1925 - March 19

Washington

Mandangoyl, Wesley C.

1931 - December 28

Prince George

Mandanici, Gaetano

1929 - August 18

Wicomico

Mandelstam, Samuel

1924 - May 21

Washington

Manders, Josephine E.

1927 - April 3

Calvert

Manders, Mal M.

1924 - May 2

Talbot

Mandler, Eva Anne

1924 - Feb. 5

Prince George

Mandley, Gladys

Lucile

1929- July 30

Prince George

Mandley, Jeanette E.

1932 - September 4

Montgomery

Mandrel, Sarah
Catherine

1928 - October 23

Caroline

Mandrell, Fletcher
M.

1928 - May 3

Queen Anne

Maney, Hannah

1929 - June 28

Prince George

Mangans, J. Howard

1931 - March 1

Washington

Mangels, William

1932 - January 29

Washington

Manger, Henry

1924 - March 2

Baltimore

Manger, John

1928 - June 25

Baltimore

Mangle, Betty Jane

1931 - November 30

Frederick

Manglitz, Augusta
W.

1928 - December 12

Prince George

Mangold, Dorothy
Evelyn

1931 - August 24

Baltimore

Mangold, Lena

1924 - April 3

Allegany

Manguette, Anthony

1930 - June 26

Cecil

Mangum, Albert
Leroy

1929 - January 9

Prince George

Mangum, John

1932 - January 15

Prince George

Mangum, Lemuel

1932 - October 23

Baltimore

Mangum, Martha E.

1931 - November 22

Montgomery

Mangum, Mary
Elizabeth

1924 - Sept. 26

Prince George

Mangum, Sarah

1929 - August 23

Prince George

Manidski, Mike

1928 - September 29

Baltimore

Manie, Clara

1927 - January 28

Dorchester

Manifold, Charlott
I.

1933 - October 17

Anne Arundel

Manifold, Dorothy
Louise

1932 - July 20

Anne Arundel

Manifold, Nellie A.

1929 - October 9

Anne Arundel

Twin

Manigay,

1932 - August 10

Baltimore

Manion, Mary Franis

1926 - May 15

Montgomery

Manion, Mary
Francis

1928 - January 4

Montgomery

Manions, Charles W.

1926 - February 26

Washington

Manious, Mary
Elizabeth

1932 - August 2

Washington

Mankamer, Norma

1931 - March 5

Allegany

ManKamyer, Zada A.

1932 - March 7

Allegany

Mankin, Sarah M.

1932 - December 12

Anne Arundel

Manious, Indiana

1924 - April 5

Washington

Manley, John

1927 - May 30

Allegany

Manley, Margaret

1926 - April 23

Frederick

Manlove, Kate

1930 - June 23

Dorchester

Manlove, Mary E.

1932 - November 15

Cecil

Manlove, Robert T.

1928 - December 15

Cecil.

Manly, Anita Hughes

1931 - April 21

Anne Arundel

Mann, Anna L.

1930 - October 9

Carroll

Mann, Annie

1931 - August 10

Kent

Mann, Bertha Wohler

1928 - July 1

Allegany

Mann, Bradley H.

1927 - November 23

Baltimore

Mann, Caroline Hall

1932 - January 21

Garrett

Mann, Catherine

1929 - April 21

Baltimore

Mann, Charles M.

1928 - May 1

Baltimore

Mann, Christina

1931 - May 17

Allegany

Mann, Harry William

1932 - March 30

Baltimore

Mann, Helen Viola

1925 - March 20

Washington

Mann, Ida

1929- June 4

Prince George

Mann, John Henry

1925 - August 14

Baltimore

Mann, John Henry

1932 - June 14

Anne Arundel

Mann, John T.

1933 - February 12

Anne Arundel

Mann, John William

1930 - September 16

Carroll

Mann, Loutta C.

1930 - December 29

Allegany

Mann, Luther

1930 - December 19

Allegany

Mann, Nancy Louisa

1930 - March 1

Washington

Mann, Peter Curtis

1932 - February 3

Frederick

Mann, Robert
Campbell

1930 - September 21

Talbot

Mann, Thomas

1925 - August 17

Allegany

Mann, Veronica

1926 - October 23

Carroll

Mann, Virginia Lee

1930 - November 12

Baltimore

Mann, Walter C.

1930- Jan 29

Wicomico

Mann, William C.

1926 - January 7

Frederick

Mann, Wm. J.

1930 - February 9

Baltimore

Mann, Zenobia

1930 - October 26

Prince George

Mannakee, Mary Anna

1924 - May 5

Montgomery

Manner, Charles R.

1927 - February 4

Howard

Manner, Louis H.

1927 - March 12

Howard

Mannering, Mary A.

1931 - October 10

Queen Anne

Manning, Arabella
Russell

1933 - April 25

Montgomery

Manning, Christina
Elizabeth

1930 - March 9

Washington

Manning, Dora Dobson

1929 - March 30

Anne Arundel

Manning, Evaline

1931 - August 14

Baltimore

Manning, James

1929 - September 22

Allegany

Manning, James Henry

1925 - January 13

Baltimore

Manning, Joan

1932 - July 3

Washington

Manning, John

1928 - February 25

Talbot

Manning, John

1931 - June 5

Anne Arundel

Manning, John Robert
Lee

1926 - July 17

Prince George

Manning, John T.

1926 - November 20

Kent

Manning, Leon J.

1930 - February 19

Cecil

Manning, Mary
Catherine

1926 - October 19

Washington

Manning, Mary E.

1926 - May 21

Prince George

Manning, Mary Ella

1933 - September 26

Carroll

Manning, Mary Patricia

cia

1932 - September 10

Montgomery

Manning, Rosma J.

1924 - July 22

Caroline

Manning, Samuel I.

1929 - January 24

Washington

Mannion, Cecelia A.

1924 - April 17

Anne Arundel

Mannis, Amelia

1928 - July 28

Anne Arundel

Manns, Hezekiah

1931 - August 24

Anne Arundel

Manns, John Wesley

1925 - February 21

Anne Arundel

Manns, Katherine

1928 - September 24

Anne Arundel

Mannuel, Lillian H.

1927 - October 25

Prince George

Manock, Mary Abby
Libby

1932 - September 27

Montgomery

Manokey, Evelyn Jr.

1928 - October 11

Dorchester

Manokey, Rachel A.

1929 - April 26

Dorchester

Manokia, Hestelle

1926 - May 31

Talbot

Manos, Liôia
Rachael

1924 - Aug. 14

Harford

Manry, Pearl

1927 - June 12

Montgomery

Mans, Charles H.

1932 - February 11

Carroll

Mans, Charles H.

1932 - February 11

Carroll

Mans, Jno. F.

1930 - May 13

Carroll

Mans, Mary Ann

1930 - July 29

Allegany

Mans, Savilla

1925 - March 8

Carroll

Manser, Ida

1926 - March 9

Caroline

Mansfield,

1931 - March 18

Talbot

Mansfield, Alfred

1927 - January 12

Baltimore

Mansfield, Bertha

1928 - June 14

Baltimore

Mansfield, Edward

1928 - June 20

Talbot

Mansfield, Laura J.

1928 - September 20

Talbot

Mansfield, Leatres

1926 - September 27

Talbot

Mansfield, Mary
Martha

1930 - May 21

Allegheny

Mansfield, Robert
N.

1930 - February 3

Frederick

Mansfield, Royden

1927 - October 18

Talbot

Mansfield, Sarah L.

1926 - January 23

Talbot

Mansfield, William

1927 - November 1

Allegany

Mansh, Bertha

1930 - August 5

Washington

Manson, John

1928 - January 21

Talbot

Manspeaker, Cora L.

1926 - June 24

Caroline

Manspeaker, Evelyn L.

1928 - July 23

Washington

Mansperger, Adolph

1933 - April 24

Baltimore

Manthei, Herman

1931 - April 27

Anne Arundel

Mantley, Elizabeth

1931 - November 30

Anne Arundel

Mantz, Emanuel
Peter

1926 - December 2

Frederick

Mantz, George A.

1931 - September 3

Washington

Mantz, Kenneth Lee

1930 - March 15

Frederick

Mantz, Maggie

1924 - March 15

Frederick

Manual,

1929 - February 3

Wicomico

Manuel, Armania

1927 - July 18

Worcester

Manuel, Asbury Jr.

1924 - May 30

Forcester

Manuel, Bulha

1925 - December 25

Worcester

Manuel, Catherine

1933 - April 16

Allegany

Manuel, Charlie

1932 - March 27

Worcester

Manuel, Doretha May

1926 - May 8

Worcester

Manuel, Dorothy

1929 - April 28

Worcester

Manuel, Elizabeth

1928 - May 29

Worcester

Manuel, Ella G.

1930 - August 18

Washington

Manuel, George

1927 - February 2

Washington

Mannel, George Alfred

1931 - September 23

Worcester

Manuel, George E.

1925 - February 20

Worcester

Manuel, Howard

1927 - April 20

Worcester

Manuel, John A.

1932 - August 5

Prince George

Manuel, Mannie

1927 - April 10

Worcester

Manuel, Margaret

1928 - August 15

Worcester

Manuel, Martin

1925 - May 9

Worcester

Manuel, Milton

1930 - December 22

Worcester

Manuel, Randolph

1929 - May 24

Worcester

Manuel, Rarbara Ann

1927 - April 27

Worcester

Manuel, William H.

1931 - February 9

Worcester

Manuel, Woodrow
Wilson

1933 - May 14

Worcester

Manzel, Mary

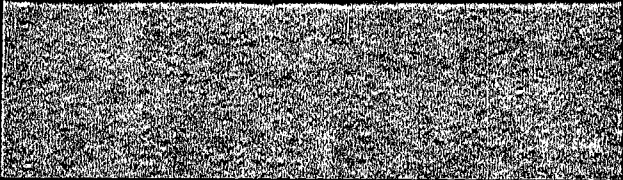
1925 - June 5

Carroll

Mapp, Lucille

1930 - December 16

Queen Anne



Marable, Benjamin F.

1924 - March 15

Cecil

Maravelis, John

1930 - March 10

Allegany

Maravian, Osannah

1930 - January 1

St. Mary's

Marbery, Robert

1928 - October 6

Montgomery

Marburger, Frederick
C.

1927 - March 4

Baltimore

Marburger, Henry L.

1932 - July 1

Anne Arundel

Marbury, Elrickie

1930 - March 21

Charles

Marbury, Elsie

1931 - March 10

Anne Arundel

Marbury, Melville

1929- November 29

Prince George

Marbury, William H.

1930 - February 4

Charles

Marcey, Margaret A.

1929 - December 25

Montgomery

Marcey, Robert E. -

1930 - September 14

Balto - Bradshaw

W - 33

March, Marie

1926 - April 21

Carroll

Marchant, Anna O.

1927 - January 11

Baltimore

Marchioni, Antonio

1928 - February 15

Cecil

Marchisno, Frank

1928 - September 29

Charles

Marcus, Alfred T.

1933 - January 29

Cecil

1929 - April 30

Cecil

Marcus, James N.

1929 - March 30

Cecil

**Marcus, Charles
Edward**

1925 - December 5

Cecil

Marcus, Leona
Capitola

1932 - December 23

Cecil

Marcy, William L.

1925 - December 30

Anne Arundel

Marden, Charles
Albert

1930 - February 16

Prince George

Prince George

Marek, Joseph

1930 - July 27

Carroll

Marfield, Wm. Edward
Jr.

1924 - January 25

Caroline

Marge, Robert T.

1924 - Oct. 27

Carroll

1931 - January 4

Montgomery

Margin, Mary

Virginia

1932 - April 13

Anne Arundel

Margman, May
Elizabeth

1930 - December 5

Baltimore

Margnen, Mary Jane

1933 - May 20

Calvert

1932 - June 7

Allegany

Margolis, Hilda

1933 - February 1

Baltimore

Margolis, Jacob
Oscar

1928 - August 4

Anne Arundel

Margroff, Iva

1928 - August 14

Allegany

Margroff, Sarah L.

1928 - June 14

Garrett

Marguess, John F

1924 - July 25

Carroll

Marguette, Leroy

1928 - June 9

Baltimore

Maricosa, Antonio

1926 - December 9

Cecil



Maribel, Clara Belle

1931 - March 21

Wicomico

Marik, Mary

1924 - August 8

Baltimore

Marine,

1925 - August 2

Dorchester

1928 - September 13

Dorchester

**Marine, Elizabeth
Anne**

1933 - June 8

Dorchester

Marine, Ellan

1925 - December 19

Dorchester

Marine, Emma C.

1933 - February 24

Dorchester

**Marine, Gladys
Katherine**

1930 - March 7

Caroline

Marine, James Russell

1924 - July 26

Dorchester

1928 - July 7

Dorchester

Marine, Mandiay

1926 - March 8

Dorchester



10

Marine, Margaret A.

1924 - March 29

Dorchester

Marine, Mary E.

1925 - November 2

Dorchester

Marine, Wilbur H.

1925 - May 18

Wicomico

Marine, Wilhelmina

1927 - December 30

Somerset

Marine, Zora B.

1926 - August 22

Caroline

Marinelli, Joseph

1925 - October 23

Prince George



**Mariner, Charlotte
S.**

1926 - January 22

Worcester

Mariner, Denwood

1927 - February 12

Somerset

Mariner, Elizabeth

1927 - February 7

Wicomico

**Mariner, John
Tabmen**

1933 - May 24

Worcester

Mariner, William E.

1929 - September 12

Worcester

Mariniak, Wasili

1927 - July 29

Baltimore

Marino, Tony

1933 - July 8

Anne Arundel

Mariott, Ida
Virginia

1926 - February 13

Baltimore

Baltimore

Mark, John Frederick

1932 - July 17

Cecil

Mark, Rebecca

1932 - November 18

Baltimore

Mark, Sarah R.

1932 - October 20

Cecil

Marke, Sevilla

1926 - April 30

Frederick

Markell, Edwin C.

1932 - July 6

Frederick

Markell, George M.

1931 - July 13

Washington

Markell, Mary Kate

1932 - December 25

Frederick

Markell, Solomon
Charles

1932 - April 6

Carroll

Marken, Elias A.

1925 - January 7

Frederick

**Marker, Carrol
Russell**

1933 - November 25

Washington

Marker, Catheryn

1928 - May 24

Caroline

Marker, Charlotte

1925 - September 9

Frederick

Marker, Emma J.

1927 - March 12

Carroll

Marker, G. Weston

1928 - April 13

Washington

Marker, Milton

1924 - February 2

Allegany

Marker, Peter

1924 - Oct. 20

Frederick

Marker, Ralph

1926 - January 11

Washington

Markey, Mary V.

1926 - May 6

Frederick

Markgraf, Sarah V.

1928 - August 26

Talbot

Markins, Charles A.

1925 - September 15

Baltimore

Markland, Charles E.

1931 - November 22

Baltimore

Markland, Irene

1924 - July 14

Carroll

Markle, Catherine

1930 - July 23

Carroll

Markley, Bertha
Eleanor

1933 - January 27

Montgomery

Markley, Bertha May

1933 - September 22

Washington

Markley, Clara
Louise

1924 - Feb. 23

Harford

Markley, John

1930 - July 18

Harford

Markley, Lehr
Cordelia

1928 - July 23

Harford

**Markley, William
Saunders**

1928 - April 24

Baltimore

Markline, John
Nicholas

1928 - July 24

Harford

Markline, Mary
Catherine

1932 - January 23

Harford

Markoe, Carrdiz L.

1927 - November 3

Frederick

Markoe, Samuel

1933 - December 25

Frederick

Markoe, William G.

1933 - February 26

Frederick

Markowitz, Sadie

1924 - October 24

Baltimore

Marks, Charles
Edward

1930 - September 21

Washington

Marks, Ellen

1929- January 13

Carroll

Marks, Frank

1930 - November 17

Allegany

Marks, George
Wesley

1927 - January 9

Howard

Marks, James

1931 - October 13

Cecil

Marks, John

1928 - October 25

Garrett

Marks, Laura V.

1933 - January 16

Baltimore

Marks, Margaret
Kolmer

1925 - October 20

Allegany

Marks, Mary E.

1926 - August 1

Howard

Marks, Paul

1928 - August 19

Allegany

Marks, Richard A.

1983 - July 20

Carroll

Marks, S. Augusta

1924 - July 4

Harford

Marks, William A.

1926 - September 29

Baltimore

Marks, William
Edward

1924 - August 30

Anne Arundel

Marks, William Henry

1927 - July 17

Howard

Marley, Benjamin C.
Jr.

1931 - July 27

Frederick

Harley, Benjamin C.

1931 - January 17

Baltimore

**Marley, George
Randolph**

1928 - June 25

Baltimore

Marley, John Tilton

1930 - March 2

Baltimore

Marley, John Vernon

1931 - October 31

Baltimore

Marley, Mary

1927 - July 22

Prince George

Marlow, Eliza J.

1930 - September 5

Prince George

Marlow, Grace

1930 - December 15

Montgomery

Marlow, Jesse R.

1925 - October 6

Howard

Marlow, Laurence T.

1929- March 15

Prince George

Marlow, Martha

1924 - March 18

Frederick

Marlow, Martha S.

1928 - May 21

Montgomery

Marlow, Samuel
Cissel

1925 - August 4

Howard

Marlow, William
Henry

1927 - December 26

Howard

Marlowe, Frances M.

1933 - November 26

Howard

**Marmadicke, Mrs.
Louis Ridgely**

1925 - August 2

Montgomery

Marman, Bradley T.

1931 - May 8

Frederick

Maroney, Mary
Cathrine

1927 - June 25

Garrett

Maroney, Mary Ellen

1929- May 28

Garrett

Maronsek, Albert

193I - April 17

Dorchester

Marooy, John William

1924 - March 15

Garrett

Marotta, Thomas A.

1931 - April 30

Anne Arundel

Marotte, Harry A.

1924 - April 8

Washington

Marple, Elizabeth
Ela

1928 - February 6

Cecil

Marpel, Robert
Eugene

1932 - November 6

Washington

Marquardt, Julius

1930 - January 11

Baltimore

Marquess, Ella
Rebecca

1928 - May 6

Calvert

Marquess, John T.

1924 - July 25

Carroll

Marquess, Philman T.

1932 - December 2

Calvert

Marquette, John F.

1927 - May 9

Carroll

Marquis, Charles M.

1932 - April 14

Allegany

Harr, Alem Kenedy

1931 - September 19

Prince George

Marr, Jennie

1929 - June 22

Prince George

Marr, Lillie

1925 - August 6

Baltimore

Marr, Mary Lizza

1933 - May 8

Montgomery

Marra, Francesco

1927 - May 9

Allegany

Marrano, Guy

1927 - October 2

Cecil

Marriner, Jeannette F.

1925 - March 3

Worcester

Marriner, John
Edward

1929 - March 21

Worcester

**Marriner, Nevitte
Franklin**

1927 - May 14

Somerset

Marriner, Olliver
James

1927 - October 9

Worcester

Marriner, Robert L.

1928 - March 7

Worcester

Marriner, Sarah
Elizabeth

1929 - September 2

Somerset

Marriner, Sarah P.

1933 - December 16

Somerset

Marriner, Thos. W.

1924 - June 23

Worcester

Marriott, Christiana

1928 - October 14

Montgomery

Marriott, Susan
Ann Elizabeth

1924 - April 7

Frederick

Marris, Annie T.

1933 - October 12

Wicomico

Marritt, Frank

1925 - March 2

Frederick

**Marrow, Mildred
Lucile**

1926 - September 24

Montgomery

Marryett, Laura V.

1927 - November 28

Washington

Marscheck, George

1933 - August 15

Baltimore

Marsden, Arthur

1931 - August 25

Frederick

**Marsden, Arthur
H.**

1930 - April 18

Frederick

Marsden, Eleanor A.

1931 - January 13

Carroll

Marsden, Joshua M.

1930 - September 26

Baltimore

Marsden, Julia A.

1927 - September 13

Baltimore

Marsden, Mary G.

1925 - December 9

Carroll

Marsh,

1924 - March 16

Carroll

Marsh,

1924 - March 16

Carroll

Marsh, Alice
Humphrey

1929- April 15

Prince George

Marsh, Benlia
Lydiyan

1929 - April 10

Carroll

Marsh, Calvin

1924 - Sept. 21

Talbot

Marsh, Charles Weede

1927 - January 31

Carroll

Marsh, Dorothy

1928 - May 9

Carroll

Marsh, E. A.

1925 - June 30

Montgomery

Marsh, Edwd. T.

1929 - September 24

Somerset

Marsh, Ella N.

1928 - March 20

Somerset

Marsh, Emma A.

1932 - November 26

Frederick

Marsh, George P.

1924 - May 28

Harford

Marsh, Geo. R. Sr.

1930 - April 17

Somerset

Marsh, James

1933 - September 18

Washington

Marsh, John

1930 - January 19

Worcester

Marsh, John W.

1930 - September 3

Baltimore

Marsh, John Wesley

1928 - August 11

Somerset

Marsh, Joseph J.

1924 - Jan. 12

Frederick

Marsh, Julia A. M.

1926 - June 15

Frederick

Marsh, Julia
Ascension

1925 - June 11

Carroll

Marsh, Julia Garvin

1926 - May 18

Washington

Marsh, Margaret

1933 - October 24

Baltimore

Marsh, Marjorie

1926 - January 23

Frederick

Marsh, Mary Catherine

1926 - June 6

Washington

Marsh, Nelson
Farntaven

1926 - August 7

Prince George

Marsh, Roland Hill

1930- Sept 11

Wicomico

Marsh, Sallie A.

1931 - April 11

Somerset

Marsh, Shady

1931 - November 2

Somerset

**Marsh, Thirza Jane
Gregory**

1925 - June 17

Calvert

Marsh, Thomas W.

1927 - September 16

Montgomery

Marsh, Wilamina S.

1925 - August 30

Baltimore

Marsh, William H.

1926 - January 7

Anne Arundel

Marsh, William W.

1930 - March 29

Somerset

**Marshaell, Bettie
L.**

1930 - August 17

Frederick

Marshaell, Dortha R.

1928 - July 14

Frederick

Marshal, Mary E.

1928 - January 10

Worcester

Marshal, Singelton

1931 - June 21

Montgomery

Marshall,

1924 - June 26

Prince George

Marshall,

1926 - December 18

Somerset

Marshall,

1929 - April 30

Dorchester

Marshall,

1931 - October 3

Worcester

Marshall, Alice
Edith

1927 - November 2

Prince George

Marshall, Amanda C.

1924 - May 25

Baltimore

Marshall, Anna A.

1933 - June 22

Dorchester

Marshall, Annabelle

1927 - October 11

Dorchester

Marshall, Annie

1927 - April 29

Harford

Marshall, Annie
Elizabeth

1931 - November 7

Baltimore

Marshall, Annie M.

1932 - December 4

Carroll

Marshall, Annie R.

1924 - July 27

Washington

Marshall, Arthur John

1928 - February 8

Dorchester

Marshall, Benjamin
Franklin

1930 - November 26

Talbot

Marshall, Bernard

1931 - October 15

Charles

**Marshall, Bertha
Beatrice**

1931 - September 1

Prince George

Marshall, Blanche

1929- January 12

Montgomery

Marshall, Carl W.

1927 - September 14

Montgomery

Marshall, Caroline

1924 - Sept. 26

Frederick

Marshall, Carroll

1925 - March 27

Somerset

Marshall, Charles
Edward

1927 - August 17

Washington

Marshall, Charles
Albert

1933 - November 29

Baltimore

Marshall, Charles D.

1933 - September 1

Talbot

Marshall, Charles D.

1933 - September 1

Talbot

Marshall, Charles E.

1929 - February 1

Baltimore

Marshall, Charles
Frederick

1930 - April 7

Howard

Marshall, Clara W.

1926 - March 10

Dorchester

Marshall, Clyde
Julian

1926 - January 4

Charles

Marshall, Daisy N.

1933 - April 13

Frederick

Marshall, Doris
Marie

1928 - February 8

Anne Arundel

Marshall, Dorothy

1931 - October 8

Wicomico

Marshall, Edna M.

1933 - April 10

Wicomico

**Marshall, Edward
Athlestan**

1928 - November 13

Baltimore

Marshall, Edward F.

1932 - April 11

Somerset

Marshall, Elbert

1924 - Dec. 7

Cecil

Marshall, Eldridge
F.

1926 - November 10

Baltimore

Marshall, Elijah

1929 - January 29

Dorchester

Marshall, Eliza J.

1927 - November 11

Talbot

Marshall, Elizabeth

1926 - December 21

Talbot

Marshall, Elizabeth

1926 - February 28

Prince George

Marshall, Elizabeth

1931 - November 14

Charles

Marshall, Ella C.

1928 - April 30

Talbot

Marshall, Elna May

1931 - February 5

Anne Arundel

See Briscoe

Marshall, Emily

1926 - May 19

Charles

Marshall, Ernest

1932 - October 16

Dorchester

Marshall, Ernest
Lowell

1927 - January 30

Prince George

Marshall, Esther
Jane

1929 - November 21

Worcester

Marshall, Ethel

1927 - February 12

Baltimore

Marshall, Eva R.

1931 - August 18

Wicomico

Marshall, Florence
A.

1926 - January 11

Baltimore

**Marshall, Francis
E.**

1929 - August 27

Dorchester

Marshall, Frank

1929 - January 17

Worcester

Marshall, Frank A.

1930 - February 19

Talbot

Marshall, Fred.

1932 - August 20

Prince George

Marshall, Fredric
Canfield

1924 - Feb. 25

Charles

Marshall, George

1930 - February 28

Anne Arundel

Marshall, George E.

1929- October 7

Carroll

Marshall, George H.

1930 - March 11

Charles

Marshall, George W.

1927 - July 1

Worcester

Marshall, George W.

1924 - June 10

Talbot

Marshall, George W.

1931 - August 29

Anne Arundel

S

Marshall, Gordon
Alexander

1925 - September 20

Worcester

Marshall, Grace

1924 - Jan. 15

Dorchester

Marshall, Harry

1931 - February 4

Worcester

Marshall, Helen

1928 - August 17

Washington

Marshall, Helen Lee

1925 - October 2

Dorchester

Marshall, Hennie

1926 - January 5

Dorchester

Marshall, Herman

1924 - August 1

Allegany

Marshall, Howard

1924 - April 1

Baltimore

Marshall, Irene

1924 - June 15

Somerset

Marshall, Iris Ann

1929 - March 20

Talbot

Marshall, Isabella
C.

1930 - August 3

Charles

Marshall, James A.

1927 - July 15

Dorchester

Marshall, James A.

1932 - April 9

Talbot

Marshall, James E.

1929 - November 24

Dorchester

Marshall, James
Edward

1932 - September 2

Washington

**Marshall, James
Gant**

1929 - September 29

St. Mary's

Marshall, James H.

1930 - February 27

Anne Arundel

Marshall, James W.

1928 - February 1

Charles

Marshall, Jane C.

1924 - Dec. 13

Charles

Marshall, H. Jane

1933 - October 23

Talbot

Marshall, Jennie

1925 - May 20

Somerset

**Marshall, Jesse
Rosevelt**

1925 - September 21

Washington

Marshall, Jessie L.

1927 - August 3

Anne Arundel

Marshall, Mrs. John

1926 - February 4

Charles

Marshall, John

1926 - February 27

Charles

Marshall, John

1927 - May 31

St. Mary's

Marshall, John

1932 - June 17

Allegheny

Marshall, John B.

1931 - July 17

Talbot

**Marshall, John
Charles**

1929- July 24

Carroll

Marshall, John F.

1927 - November 4

Somerset

Marshall, John Fulton

1928 - May 27

Baltimore

Marshall, John
Oliver

1927 - April 28

Talbot

Marshall, Joseph E.

1926 - April 17

Dorchester

Marshall, Joseph E.

1926 - April 25

Frederick

Marshall, Julia

1929 - September 16

Anne Arundel

Marshall, June M.

1933 - September 21

Worcester

Marshall, Kate Horn

1924 - July 13

Talbot

Marshall, Lane A.

1931 - September 9

Cecil

Marshall, Laura

1927 - June 17

Carroll

**Marshall, Lillian
Oletta**

1926 - April 18

Queen Anne

Marshall, Lloyd
Hewitt

1927 - May 7

Washington

Marshall, Louis T.

1933 - December 3

Dorchester

Marshall, Louise

1930 - February 4

Baltimore .

Marshall, Lucinda

1932 - October 21

Howard

Marshall, Lucretia
K.

1933 - March 19

Prince George

Marshall, Lucy

1924 - Dec. 4

Prince George

Marshall, Lucy

1928 - February 10

Prince George

Marshall, Maggie

1924 - Sept. 14

Wicomico

Marshall, Mannie
Belle

1924 - Oct. 10

Queen Anne

Marshall, Margaret

1931 - November 26

Anne Arundel

Marshall, Margaret
A.

1924 - March 24

Washington

**Marshall, Margretta.
Taylor**

1931 - March 1

Harford

Marshall, Mary
Arthur

1932 - December 27

Prince George

Marshall, Mary C.

1933 - November 23

Dorchester .

Marshall, Mary
Catherine

1932 - November 10

Washington

Marshall, Mary E.

1926 - May 11

Somerset

Marshall, Mary E.

1933 - October 11

Dorchester

**Marshall, Mary
Ellen**

1925 - April 11

Washington

Marshall, Mary
Haines

1930 - September 26

Baltimore

Marshall, Mary J.

1932 - May 25

Dorchester

Marshall, Mary P.

1929- July 23

Prince George

Marshall, Mary
Theresa

1932 - September 1

Cecil

Marshall, Melissa C.

1926 - April 19

Dorchester

Marshall, Monroe D.

1924 - April 10

Frederick

Marshall, Patrick

1925 - March 10

St. Mary's

Marshall, Purdy or
Pearlie

1933 - March 21

Baltimore

Marshall, Ralph

1932 - February 28

Washington

Marshall, Raymond

1933 - June 16

Wiconico

**Marshall, Raymond
Junior**

1933 - May 16

Anne Arndel

Marshall, Robert
Wilson

1929 - March 12

Somerset

Marshall, Roberta

1932 - November 16

Somerset

Marshall, Roland

1929- March 21

Prince George

Marshall, Rowzetic

1926 - March 15

Worcester

Marshall, Ruth A.

1930 - April 5

Carroll

Marshall, Sallie A.

1930 - October 25

Worcester

Marshall, Samuel B.

1927 - November 30

Wicomico

Marshall, Samuel C.

1929 - March 22

Baltimore

Marshall, Samuel S.

1931 - February 15

Worcester

Marshall, Sarah C.

1931 - April 11

Dorchester

**Marshall, Sarah
Lancaster**

1925 - September 24

St. Mary's

Marshall, Silas

1928 - August 4

Charles

Marshall, Sophie
Howard Tyson

1928 - February 12

Baltimore

Marshall, Susan

1930 - August 9

Dorchester

Marshall, Thomas D.

1932 - March 6

Worcester

Marshall, Tom

1933 - September 10

Somerset

Marshall, Walton L.

1925 - March 18

Queen Anne

Marshall, Willard S.

1924 - May 21

Talbot

Marshall, William

1926 - April 9

Wicomico

Marshall, William

1926 - May 12

Prince George

Marshall, William C.

1927 - November 16

Wicomico

Marshall, Wm. H.

1926 - April 21

Carroll

Marshall, Wm. H.

1930 - January 14

Dorchester

Marshal, William
Henry

1924 - August 5

Worcester

Marshall, William
Henry

1930 - November 9

Worcester

Marshall, William R.

1933 - August 1

Worcester

Marshbank, Fannie

1930 - March 14

Cecil

Marshbank, Lidie

1928 - July 9

Cecil

Marshbank, William
Hyland

1927 - May 1

Cecil

**Marsteller, Sarah
Jane**

1931 - August 17

Baltimore

Marston, Mary Gage

1929 - December 8

Montgomery

Warston, Mary Gage

1929 - December 8

Montgomery

Marston, Richard

1930 - July 17

Allegany

Marston, William
Staples

1926 - May 18

Baltimore

Martain, Josiah

1927 - June 26

Montgomery

Martell, Barbara M.

1928 - September 24

Baltimore

Martell, Justus

1924 - February 13

Baltimore

Martell, Lillian
Windsor

1928 - September 19

Anne Arundel

Marten, James T.

1930 - February 13

Harford

Martenet, Charles F.
Sr.

1930 - June 24

Baltimore

Martens, Violet F.

1928 - July 1

Baltimore

Marth, Mary Augusta

1931 - August 21

Montgomery

Martin,

1925 - December 1

Cecil

Martin,

1924 - June 16

Carroll

Martin,

1927 - March 4

Cecil

Martin

1928 - February 18

Montgomery

Martin,

1929 - July 23

Allegany

Martin,

1931 - August 6

Washington

Martin,

1933 - June 5

Allegany

Martin,

1932 - May 15

Carroll

Martin,

1932 - April 4

Carroll

Martin,

1932 - January 4

Prince George

Martin, Abner H.

1932 - June 5

Allegany

Martin, Abner H.

1932 - June 5

Allegany

Martin, Abram H.

1933 - June 8

Washington

Martin, Adam Jackson

1934 - April 12

Carroll

Martin, Addie S.

1928 - December 7

Washington

Martin, Addison

1927 - December 15

Allegany

Martin, Addison

1927 - December 15

Allegany

Martin, Agnes Jane

1931 - April 16

Washington

Martin, Albert C.

1930 - March 17

Washington

Martin, Albert Cecil

1926 - January 10

Anne Arundel

Martin, Alexander

1924 - Feb. 27

Charles

Martin, Alice E.

1925 - January 6

Howard

Martin, Alice J.

1926 - August 15

Worcester

Martin, Alice V.

1928 - October 11

Worcester

Martin, Allie Louise

1931 - June 18

Anne Arundel

Martin, Alverta

1931 - March 24

Wicomico

Martin, Amanda H.

1933 - January 29

Washington

Martin, Amos H.

1928 - December 16

Washington

Martin, Amos M.

1924 - May 19

Washington

Martin, Andrew J.

1931 - May 5

Howard.

Martin, Andrew T.

1931 - August 26

Howard

Martin, Anna

Barbara

1926 - February 5

Frederick

Martin, Anna E.

1932 - April 8

Garrett

Martin, Anna Lee

1932 - December 4

Frederick

Martin, Anna Louise

1932 - April 18

Baltimore

Martin, Anna M.

1924 - Feb. 6

Washington

Martin, Anna Maria

1931 - May 28

Washington

Martin, Annie

1929- April 1

Prince George

Martin, Annie Pearl

1928 - December 25

Baltimore

Martin, Annie White

1931 - July 29

Washington

Martin, Arabella

1928 - February 19

Garrett

Martin, Arthur
Frank

1924 - April 1

Harford

Martin, August B.

1933 - May 4

Washington

Martin, Augustus

1932 - October 19

Anne Arundel

Martin, Barbara
Adaline

1930 - August 9

Washington

Martin, Benjamin

1927 - April 26

Baltimore

Martin, Benjamin

1930 - April 30

Allegany

Martin, Benjamin H.

1927 - May 15

Washington

Martin, Berna

Jeanette

1932 - November 27

Harford

Martin, Bertha
Evalyn

1929- May 31

Prince George

Martin, Betty Lou

1927 - October 25

Allegany

Martin, Caroline

1926 - December 9

Queen Anne

Martin, Carroll R.

1927 - June 25

Washington

Martin, Carrie May

1932 - August 29

Washington

Martin, Catherine J.

1929 - March 22

Washington

Martin, Catherine
Virginia

1928 - June 4

Anne Arundel

Martin, Catheryne

1929 - March 9

Caroline

Martin, Chancey J.

1929- January 21

Garrett

Martin, Charles

1931 - September 18

Talbot

Martin, Charles E.

1924 - October 20

Baltimore

Martin, Charles Gill

1928 - February 19

Baltimore

Martin, Charles H.

1926 - September 13

Carroll .

Martin, Charles

Henry

1927 - August 18

Allegany

Martin, Charles L.

1925 - November 25

Anne Arundel

Martin, Charles M.

1927 - January 7

Frederick

Martin, Charles T.

1929- May 24

Carroll

Martin, Charles
William

1933 - April 5

Prince George

Martin, Charlott V.

1925 - June 15

Washington



Martin, Charlotte
May

1932 - May 23

Anne Arundel

Martin, Christine
Decketree

1929 - October 16

Allegany

Martin, Chrostopher
C.

1929 - July 22

Harford

Martin, Clara .

1930 - December 15

Allegany

Martin, Clara L.

1933 - September 30

Washington

Martin, Clem P.

1924 - Jan. 7

Montgomery

Martin, Clifford
Eugene

1932 - June 15

Washington

Martin, Colleen M.

1930 - January 5

Baltimore

Martin, Conrad

1929 - November 16

Allegany

Martin, Daniel W.

1931 - February 2

Washington

Martin, Daniel
Webster

1929 - December 2

Washington

Martin, David

1926 - January 2

Carroll

Martin, David C.

1927 - March 24

Washington

Martin, David E.

1925 - March 4

Frederick

Martin, David E.

1931 - April 10

Carroll

Martin, David E.

1931 - April 10

Carroll

Martin, David
Franklin

1931 - October 11

Baltimore

Martin, David Peter

1933 - March 25

Garrett

Martin, Delores
June

1931 - August 5

Allegany

Martin, Dolly

1927 - April 10

Worcester

Martin, Earl B.

1931 - July 28

Frederick

Martin, Earl Ritchie

1930 - December 18

Carroll

Martin, Earl Sidney

1928 - June 9

Washington

Martin, Earle E.

1929 - January 13

Washington

Martin, Edgar Boyd

1931 - June 21

Washington

Martin, Edith

1925 - August 16

St. Mary's

Martin, Edna

1932 - September

Wicomico

Martin, Dr. Edward
B.

1930 - November 11

Allegany

Martin, Edward F.

1928 - January 19

Baltimore

Martin, Edwin E.

1925 - April 6

Harford

Martin, Eliza

1925 - February 19

Garrett

Martin, Eliza

1927 - May 17

Caroline

Martin, Elizabeth

1924 - Jan. 27

Washington

Martin, Elizabeth A.

1932 - October 25

Allegany

Martin, Elizabeth
Ann S.

1928 - February 6

Howard

Martin, Elizebeth K.

1933 - May 1

Washington

Martin, Ella

Beatrice

1925 - October 9

Kent

Martin, Ellen

1925 - September 15

Allegany

Martin, Ellen

1929 - September 26

Worcester



Martin, Ellen
Graham

1926 - October 22

Garrett

Martin, Ellen Retta

1928 - April 12

Allegany

Martin, Ellen Susann

1931 - December 17

Frederick

Martin, Elnora
Helen

1924 - Nov. 17

Kent

Martin, Emma K.

1932 - July 6

Washington

Martin, Emma M.

1931 - May 13

Allegheny

Martin, Emma V.

1928 - March 20

Washington

Martin, Emmanuel
Keller

1933 - September 28

Washington

Martin, Ethel V.

1932 - August 30

Baltimore

Martin, Evelyn
Madaline ,

1925 - April 20

Washington

Martin, Evelyn
Madaline ,

1925 - April 20

Washington

Martin, Fannie C.

1932 - December 16

Baltimore

Martin, Fannie

Elizabeth

1933 - September 20

Washington

Martin, Fannie M.

1926 - May 1

Anne Arundel

Martin, Floyd F.

1933 - April 15

Frederick

Martin, Frank Eugene

1931 - April 7

Worcester

Martin, Frank Otto

1926 - January 19

Anne Arundel

Martin, Frederick
Thornton

1924 - Dec. 6

Garrett

Martin, Garlin

1927 - July 28

Worcester

Martin, George

1928 - September 8

Allegany

Martin, George Jr.

1930 - April 17

Baltimore

Martin, George A.

1929 - November 13

Baltimore

Martin, George D.

1928 - November 12

Howard

Martin, George D.

1933 - November 13

Allegany

Martin, George M.

1933 - March 14

Worcester

Martin, George
Richard

1926 - February 20

Somerset

Martin, George W.

1925 - November 12

Baltimore

Martin, George
Washington

1924 - Oct. 17

Frederick

Martin, George
Washington

1929- May 26

Carroll

**Martin, Gloria
Lorian**

1929 - January 19

Frederick

Martin, Grace M.

1925 - September 12

Washington

Martin, Granville

1926 - August 8

Baltimore

Martin, Guy Walter

1929 - November 4

Garrett

Martin, Hannah

1926 - April 4

Kent

Martin, Hannah

Hidessa

1928 - December 11

Washington

Martin, Harry J.

1929 - September 12

Washington

Martin, Harvey D.

1926 - February 3

Washington

Martin, Heneretta M.

1929 - December 22

Charles

Martin, Henrietta H.

1925 - December 1

Allegany

Martin, Henry

1924 - August 17

Anne Arundel

Martin, Henry
Asbury

1929- January 12

Carroll

Martin, Henry

George

1931 - January 5

Somerset

Martin, Henry
Register

1933 - November 24

Calvert

Martin, Hester

1932 - March 20

Worcester



Martin, Hilda F.

1933 - July 24

Montgomery

Martin, Howard
Eugene

1927 - November 23

Anne Arundel

Martin, Howard Krebs

1928 - January 8

Frederick

Martin, Ida

1929 - October 14

Wicomico

Martin, Ida Penn

1926 - January 11

Montgomery

Martin, Jacob B.

1932 - October 1

Anne Arundel

Martin, James

1929 - August 10

Frederick

Martin, James

1929 - April 12

Kent

Martin, James H.

1930- August 30

Wicomico

Martin, James
La Viga

1926 - November 9

Charles

Martin, James P.

1925 - May 13

Frederick

Martin, James
Richard

1927 - January 16

Somerset

Martin, James Victor

1928 - August 29

Frederick

Martin, James
William

1928 - August 5

Frederick

Martin, Jane Delores

1933 - March 8

Washington

Martin, Jean

1930 - January 6

Allegany

Martin, Jennie

1925 - August 10

Montgomery

Martin, Jennie

1933 - October 12

Allegany

Martin, Jere

1924 - May 12

Talbot

Martin, John

1928 - April 19

Dorchester

Martin, John B.

1928 - December 15

Washington

Martin, John E.

1932 - October 24

Washington

Martin, John F.

1929 - January 5

Washington

Martin, John J.

1924 - April 24

Washington

Martin, John M.

1929 - June 15

Washington

Martin, John M.

1929 - March 9

Charles

Martin, John R.

1927 - October 2

Washington

Martin, John T.

1932 - March 3

Frederick

Martin, John
Thomas

1929 - October 27

Howard

Martin, John Thos.

1930 - June 13

Washington

Martin, John William

1925 - May 26

Anne Arundel

Martin, Joseph

1929 - March 13

Allegany

Martin, Joseph C.

1926 - May 18

Frederick

Martin, Jossie May.

1929 - July 13

Worcester

Martin, Lavinia

1934 - April 24

Anne Arundel

Martin, Lewis

1924 - March 3

Baltimore

Martin, Lewis G.

1931 - July 22

Harford

Martin, Levi

1928 - August 23

Washington

Martin, Livin

1931 - July 30

Allegany

Martin, Lucey

1924. - July 23

Prince George

Martin, Lucinda Ann

1925 - February 24

Carroll

Martin, Lucy

1924 - April 6

Washington

Martin, Luther

Ernest

1929- January 15

Carroll

Martin, Luther
Cliver

1927 - March 26

Frederick

Martin, Lyda
Victoria

1933 - April 18

Allegany

Martin, M. Harry

1932 - May 8

Washington

Martin, M. Snyder

1924 - March 1

Washington

Martin, Mabel

1932 - April 7

Carroll

Martin, Mabel Lois

1930 - December 31

Prince George

Martin, Marcellus

1929 - March 17

Allegany

Martin, Margaret

1928 - August 25

Allegany

Martin, Margaret

1929 - January 28

Caroline

Martin, Margaret

1933 - March 28

Prince George

Martin, Margaret C.

1927 - October 15

Allegany

Martin, Margaret
Elizabeth

1933 - March 13

Allegany

Martin, Marie

1926 - September 11

Baltimore

Martin, Martha

Jane

1927 - September 28

Kent

Martin, Marvin

1928 - March 16

Caroline

Martin, Marvin N.

1933 - November 25

Calvert

Martin, Mary

1928 - July 26

Caroline

Martin, Mary

1930 - October 10

Allegany

Martin, Mary

1930 - February 15

Baltimore

Martin, Mary A.

1924 - April 23

Baltimore

Martin, Mary Ann

1926 - November 17

Carroll

Martin, Mary E.

1925 - January 4

Anne Arundel

Martin, Mary E.

1926 - June 18

Anne Arundel

Martin, Mary E.

1927 - February 28

Washington

Martin, Mary E.

1930 - June 5

Allegany

Martin, Mary
Elizabeth

1925 - August 24

Somerset

Martin, Mary
Elizabeth

1927 - April 11

Harford

Martin, Mary Eliz.

1932 - July 5

Baltimore

Martin, Mary Ellen

1924 - June 9

Frederick

Martin, Mary Eva

1930 - June 30

Washington

Martin, Mary Jane

1927 - November 14

Worcester

Martin, Mary Nevada

1933 - June 21

Worcester

Martin, Maud T.

1925 - March 19

Allegany

Martin, Max

1928 - November 7

Washington

Martin, May

1929 - May 2

Worcester

Martin, Mazie
Marguerite

1924 - Sept. 30

Washington

Martin, Merrick

1927 - April 9

Charles

Martin, Michael W.

1932 - June 15

Washington

Martin, Michal H.

1924 - June 13

Allegany

Martin, Minnie G.

1929 - March 26

Washington

Martin, Minnie

1933 - January 2

Frederick

Martin, Mitchell

1931 - December 8

Prince George

Martin, Moses

1933 - February 20

Carroll

Martin, Nathan

1931 - November 5

Allegany

Martin, Patrick

1924 - February 27

Allegany

Martin, Paul

1925 - February 9

Carroll

Martin, Paul M.

1929 - October 23

Washington

Martin, Pauline Alice

1932 - May 16

Carroll

Martin, Phillip

1925 - April 10

Allegany

Martin, Preston R.

1924 - Jan. 14

Carroll

Martin, Rachael

1931 - December 22

Allegany

Martin, Rachel

1925 - July 19

Baltimore

Martin, Rachel A.

1929 - January 25

Baltimore

Martin, Rayette J.

1932 - March 28

Washington

Martin, Raymond

1927 - May 17

Allegany

Martin, Rebeca

1933 - December 19

Montgomery

Martin, Rebecca

1924 - Dec. 2

Washington

Martin, Rebecca

1927 - September 29

Allegany

Martin, Reuben E.

1924 - Jan. 14

Washington

Martin, Rheta May

1926 - March 9

Washington

Martin, Richard

1926 - May 11

Anne Arundel

Martin, Robert A.

1933 - November 15

Washington

Martin, Robert Dale

1930 - March 22

Washington



Martin, Robert
Ernest, Jr.

1931 - July 14

Allegany

Martin, Robert H.

1924 - July 6

Somerset

Martin, Robert J.

1927 - May 29

Anne Arundel

Martin, Robert
Ugene

1931 - August 28

Frederick

Martin, Rosa

1929 - May 28

Washington

Martin, Rosa J.

1928 - September 8

Baltimore

Martin, Samuel

1924 - June 28

Frederick

Martin, Samuel G.

1928 - July 3

Allegany

Martin, Samuel H.

1926 - June 12

Washington

Martin, Sanderson
Bingham

1931 - May 21

Montgomery

Martin, Sarah

1928 - June 19

Washington

Martin, Sarah

1931 - December 4

Anne Arundel

Martin, Sarah

1932 - February 26

Montgomery

Martin, Sarah, C.

1930 - November 5

Allegany

Martin, Sarah
Catherine

1925 - August 17

Frederick

Martin, Sarah E.

1924 - March 26

Baltimore

Martin, Sarah E.

1929 - November 30

Queen Anne

Martin, Scott W.

1931 - February 14

Montgomery

Martin, Senia

1929- November 16

Prince George

Martin, Susie P.

1930 - December 27

Montgomery

Martin, Teresa A.

1928 - May 10

Baltimore

Martin, Thos. Sr.

1929 - December 2

Worcester

Martin, Thomas

1930 - September 26

Frederick

Martin, Thomas F.

1928 - February 27

Caroline

Martin, Troxell E.

1930 - January 14

Carroll

Martin, Urea E.

1929 - May 29

Howard

Martin, Viola
Georgia

1929- February 18

Montgomery

Martin, Virginia

1932 - October 30

Allegheny

Martin, Virginia Anne

1931 - December 3

Garrett

Martin, Wallace

1927 - October 17

Washington

Martin, Walter
Charles

1930 - March 24

Cecil

Martin, Wesley

1933 - November 24

Baltimore

Martin, Wilhimina
A.

1927 - November 15

Dorchester

Martin, William

1926 - December 24

Baltimore - *1926*

m w 2

un

1926

72

1847

Martin, William

1928 - April 10

Baltimore

Handwritten notes:
63
Mr W M
at
S...
L...
C...

Martin, William

1927 - January 8

Frederick

208



5-31-30

Mr. J. J. [unclear]

Mr. J. J. [unclear]

[unclear]

Martin, William

1928 - March 29

Worcester

Martin, William E.

1932 - August 24

Washington

Martin, William
Ferdinand

1933 - October 12

Prince George

Martin, William H.

1928 - June 16

Wicomico

Martin, William
Henry Sr.

1931 - October 25

Montgomery

*Proctor
71
see B 70*

Martin, William
Rudolph

1931 - March 6

Baltimore

Martin, Wm. Virdin

1931 - August 14

Harford

Martin, Williard
Henry

1931 - October 7

Montgomery

Martin, Zenas L.

1931 - October 28

Baltimore

Martina, Julia
Elizabeth

1929 - November 4

Garrett

Martindale, Mary
Reynolds

1932 - November 18

Cecil

Martines, Bowie

1933 - April 21

Anne Arundel

Martini,

1930 - July 27

Baltimore

Martini, Agnes Marie

1929 - May 24

Baltimore

Martini, Helen

1932 - December 13

Baltimore

Martins, Hazel
Arbuta

1930 - January 26

Allegany

Martny, Matilda

1930 - May 31

Charles

Marts, Harold James

1927 - August 26

Anne Arundel

Martucci, Camilla

1926 - December 9

Baltimore

Martyn, Irma J.

1929 - March 21

Baltimore

Martz, Betty Lee
Maud

1929 - December 28

Washington

Martz, Carrie
Elizabeth

1925 - August 24

Washington

Martz, Charles Wm.

1925 - December 2

Frederick

Martz, Clayton B.

1931 - October 9

Washington

Martz, Cora V.

1933 - July 27

Washington

Martz, David Howard

1928 - October 16

Frederick

Martz, Dominick

1932 - June 4

Allegany

Martz, Doris Lucille

1926 - March 24

Washington

Martz, Edward

1930 - July 21

Allegheny

Martz, Elias

1924 - Oct. 7

Washington

Martz, Elias Emory

1925 - August 20

Washington

Martz, Elvin

1931 - April 5

Allegary

Martz, G. Frank

1932 - June 1

Alle gany

Martz, Harvey D.

1925 - February 6

Frederick

Martz, Helen Virginia

1933 - September 11

Washington

Martz, Ida V.

1924 - Aug. 19

Washington

Martz, Ivan W.

1929 - March 13

Washington

Martz, Linwood
Nelson

1924 - Feb. 15

Washington

Martz, Luta Olevia

1932 - March 11

Frederick

Martz, Margeret
Elnora

1926 - June 8

Washington

Martz, Mary E.

1925 - May 7

Frederick

Martz, Mary F.

1933 - November 10

Allegany

Martz, Mary Jane

1929 - September 14

Washington

Martz, Mary Mildred

1930 - August 8

Allegany

Martz, Mary Teresa

1929 - July 1

Allegheny

Martz, Mary Victoria

1929 - January 26

Washington

Martz, Ralph
Ambrose

1931 - October 25

Allegany

Martz, Randolph
Wilson

1930 - November 25

Carroll

Martz, Rosa Catherine

1933 - August 20

Frederick

Martz, Rowena
Rebecca

1926 - March 12

Washington

Martz, Samuel
Benton

1933 - December 3

Frederick

Martz, Welty D.

1925 - July 22

Washington

Martz, William Henry

1926 - April 1

Washington

Martz, Wilson N.

1927 - February 17

Frederick

Marvel,

1930 - April 18

Caroline

Marvel, Albert
Franklin

1927 - May 14

Talbot

Marvel, Annetta May

1924 - March 7

Talbot

Marvel, Bernard

1932 - September 16

Talbot

Marvel, Charles E.

1933 - May 28

Talbot

Marvel, Edward

1933 - July 10

Talbot

Marvel, Ella Addie

1926 - September 5

Queen Anne

Marvel, Levin C.

1926 - July 11

Wicomico

Marvel, Sarah I.

1927 - September 24

Queen Anne

Marvel, Thomas L.

1924 - Jan. 1

Talbot

Marvel, Vyetta Mary

1929 - August 4

Wicomico

Marvel, Wm. B.

1926 - March 21

Queen Anne



Marvel, Wm. T.

1930 - July 4

Cecil

Marvell, Kenly C.

1926 - December 5

Talbot

Marvil, Philip
Andrew

1924 - August 15

Caroline