

**Drayer, Henry**

**1933 - June 12**

**Baltimore**

Draayer, Theresa

1924 - April 14

Baltimore

**Dragon, Marcella**

**1929 - June 15**

**Talbot**

**Dragoo, Morris**  
**Hamilton**

**1929 - August 3**

**Caroline**



**Dragoo, Sarah Alvira**

**1932 - May 31**

**Caroline**

Dragovich, John

1933 - September 23

Garrett

1  
**Drain, Louise G.**

**1932 - May 10**

**Dorchester**

Drake ,

1932 - December 29

Allegany

Drake, Bertha

1928 - March 8

Allegany

Drake, Edward  
Franklin

1924 - June 23

Baltimore

**Drake, Frances Lee**

**1931 - March 17**

**Montgomery**



Drake, Leona Adaline

1924 - November 25

Caroline



Drake, Samuel

1929 - June 26

Cecil

Dramas, Tony Joseph

1924 - October 24

Allegany

Dran, J. Everett

1932 - December 24

Dorchester



**Drane, Isabel  
Johnson**

**1928 - March 30**

**Garrett**

**Drane, Wm. R.**

**1928 - July 8**

**Garrett**

**Draper**

**1928 - February 16**

**Caroline**

Draper, Albert E.  
3rd

1931 - October 13

Washington

Draper, Albert  
Edward

1932 - December 20

Washington



Draper, Catherine  
Louise

1931 - November 24

Baltimore

Draper, Clinton P.

1927 - December 3

Caroline

Draper, Daniel S.

1929 - June 16

Washington

Draper, Dora

1933 - June 26

Baltimore

Draper, Edward Leon

1927 - August 10

Caroline

**Draper, Geraldine**  
**Virgie**

**1929- June 13**

**Frederick**

**Draper, Lawrence  
E.**

**1929- July 29**

**Baltimore**

Draper, Louisa

1933 - August 7

Anne Arundel



Draper, Mary E.

1924 - May 18

Caroline

**Draper, Mary Jane**

**1929- January 11**

**Frederick**

**Draper, Mazie B.**

**1932 - May 18**

**Washington**

Draper, Roxanna

1925 - June 1

Caroline

Draper, Somerset  
Walter

1930 - August 4

Frederick

Draper, Thomas  
Henry

1933 - February 9

Caroline

Draper, Virginia C.

1928 - August 6

Washington

Draper, William

1933 - November 29

Baltimore



Draper, William

1933 - January 3

Washington

Drawer, Catharine

1932 - March 6

Baltimore

Drawer, Eleanor O.

1928 - April 1

Baltimore

Dray, Charles  
Raymond

1930 - June 29

Montgomery

Drebing, Alice

1930 - October 29

Baltimore

Drebing, Charlotta  
Elizabeth

1933 - June 25

Baltimore

Drebing, William A.

1926 - January 14

Baltimore



Drechsler, Alice  
Stevens

1933 - December 2

Baltimore



Drechsler, Angeline  
Virginia

1932 - October 8

Carroll

Drechsler, Margaret  
F.

1927 - August 16

Harford

Drechsler, Mary A.

1925 - August 25

Harford

Dredden, Julian H.

1929 - August 28

Worcester

Dredge, William  
Franklin

1926 - April 28

Prince George

Dreer, Marguriet S.

1927 - March 22

Queen Anne

Drees, Evelin D.

1924 - June 21

Allegany

**Drees, Geo. Henry**

**1928 - May 28**

**Garrett**



Drees, Irene

1924 - June 23

Garrett

Dreier, Michael

1930 - January 1

Anne Arundel

Dreisz, Elizabeth

1926 - May 13

Allegheny

Drejka, John

1932 - October 5

Baltimore

Dreka, Louis H.

1924 - October 14

Carroll

Drendrenos, (Twin  
#1)

1929 - November 25

Allegany

Drendrenos, (Twin  
#2)

1929 - November 26

Allegany

**Drennan, John P.**

**1933 - June 12**

**Washington**



Drennan, Margaret

1926 - September 2

Washington



**Drennan, Thomas**

**1926 - September 16**

**Washington**



Drenner, Edith  
Pauline

1930 - October 9

Washington

Drenner, Genevieve H.

1930- June 4

Prince George

Drenner, John H.

1928 - July 4

Washington

Drenner, Susan  
Elizabeth

1927 - June 21

Washington

Drenning, Ann Jane

1927 - June 4

Allegany

Dreschsler, Jacob

1924 - July 10

Harford



Dresser, Kate L.

1930 - August 6

Montgomery

**Dressler, Catharine**

**1929 - January 12**

**Baltimore**

Dressman, John  
George

1926 - August 11

Allegany

Dressman, John Jos.

1927 - December 30

Allegany

Drew, David A.

1924 - August 29

Allegany

Drew, Edgar E.

1924 - July 8

Allegany

Drew, Moses

1926 - April 25

Carroll

Drewey, Georga

1926 - July 6

Prince George





Drewnoski, Cristina

1926 - June 4

Allegany



Drews, August

1933 - February 26

Cecil



Drexel, Bertha I.

1933 - May 15

Baltimore

Drexel, Harriet M.

1933 - July 11

Baltimore

**Dreyer,**

**1930 - December 27**

**Allegany**

**Dreyer, Clarence**

**1929 - May 29**

**Anne Arundel**

Dreyer, Elizaweda

1927 - March 29

Allegany

Dreyer, Henry

1928 - May 5

Allegany



Dreyer, Joseph

1926 - August 5

Baltimore

Dreyer, Nellie

1924 - July 25

Allegany

**Dreyer, William**

**1931 - September 22**

**Baltimore**

Dries, Adriana  
Maria

1924 - March 27

Cecil

Driggins, Alverta

1924 - Nov. 10

Talbot

Driggins, Marjorie

1932 - December 4

Caroline

**Driggins, Samuel**

**1929 - November .10**

**Caroline**

Drigins, Charles

1931 - November 13

Talbot



Drill, William  
Harvey

1933 - May 10

Washington

Drimal, Joseph  
Frederick

1930 - September 12

Baltimore

**Drinks, Catherine**

**1925 - October 7**

**Charles**

**Drinkwater, Harry**

**1931 - May 30**

**Cecil**

see Sister

Drinkwater, Sister  
Mary Martha

1933 - July 26

Baltimore

Drinwater, Ellanor C.

1927 - July 17

Cecil

Driscoll, Daniel

1925 - October 31

Washington

Driscoll, Gertrude E.

1925 - July 21

Wicomico



Driscoll, James

1926 - May 31

Alle gany

**Driscoll, Asher J.**

**1932 - May 30**

**Wicomico**

**Driscoll, John Thomas**

**1930 - September 23**

**Carroll**

Driscoll, John W.

1924 - April 7

Wicomico

Driscoll, John W.

1932 - May 5

Allegheny

**Driscoll, Martha I.**

**1930- October 26**

**Wicomico**



Driscoll, Mary E.

1933 - December 1

Wicomico

Driscoll, Mary  
Hester

1925 - August 29

Wicomico



Driscoll, Rufus H.

1927 - July 21

Wicomico

Driscoll, Virginia  
Lee

1931 - July 13

Wicomico

**Driscoll, William H.**

**1925 - September 13**

**Frederick**

Driscoll, William P.

1930 - December 25

Washington

**Driver, Eunice**

**1929 - September 19**

**Montgomery**



Driver, George L.

1927 - February 26

Prince George

Driver, Hazel  
Elizabeth

1924 - October 14

Carroll

Driver, John F.

1929 - December 10

Dorchester



Driver, Joseph

1926 - November 24

Allegany

Driver, Katherine

1932 - December 1

Baltimore

**Driver, Lettie**

**1928 - March 27**

**Caroline**

**Driver, Mary Jane**

**1929- December 15**

**Montgomery**

**Driver, Maurice**

**1929- September 20**

**Montgomery**



**Droll, Marion**

**1933 - September 4**

**Kent**

Droneburg, James A.

1932 - September 2

Frederick

Droneburg, John  
Wesley

1930 - May 13

Frederick



**Droneburg, Ruth  
Virginia**

**1933 - June 19**

**Frederick**

Dronenburg, Alta  
Anderson

1932 - November 29

Montgomery

Dronenburg, Ida J.

1933 - December 26

Frederick

Dronenburg, John  
Dudderar

1927 - December 2

Prince George

**Dronenburg, John  
Thomas**

**1928 - July 3**

**Frederick**

**Dronenburg, Sarah E.**

**1925 - August 29**

**Frederick**

Drosdowski, John

1932 - February 4

Baltimore

Droueubusg, Anne  
Rebecca

1924 - April 7

Frederick



**Drowery, Edith W.**

**1925 - September 10**

**Worcester**

**Drozd, John**

**1925 - July 3**

**Baltimore**

Drum, Andrew Boggs  
Jr.

1929 - August 4

Anne Arundel

Drum, Julia K.

1927 - October 7

Montgomery



Drumgo, Walter L.

1925 - August 2

Worcester

Drummer, Laura

1927 - January 5

Charles

Drummond, Dorothy

1930 - June 16

Worcester

**Drummond, Emma  
Francis Wheeler**

**1925 - March 21**

**Worcester**



Drummond, John H.

1927 - August 1

Worcester

Drummond, Lizzie

1926 - May 26

Dorchester

**Drummond, Pauline**

**1933 - December 13**

**Wicomico**

Drummond,  
Summerville A.

1925 - July 5

Washington

**Drummond, William**  
**D. S.**

**1931 - May 15**

**Wicomico**

Drumond, Josephine

1931 - November 27

Worcester

Drury

1928 - October 29

Prince George



Drury

1928 - October 29

Prince George





Drury, Albert V.

1927 - March 12

Washington

Drury, Beulah L.

1933 - March 22

Washington

Drury, Edw. Tillard

1932 - April 3

St. Mary's

Drury, Elizabeth  
Jane

1927 - June 22

Calvert

Drury, Elizabeth L.

1926 - October 18

Anne Arundel

**Drury, Ida**

**1925 - September 9**

**Frederick**

**Drury, Jesse Julian**

**1927 - March 25**

**St. Mary's**

**Drury, John Henry**

**1932 - June 15**

**Calvert**



**Drury, Margaret I.**

**1932 - October 19**

**Anne Arundel**

Drury, Martin L.

1930 - August 24

Washington

**Drury, Mary Cart-  
wright**

**1933 - June 19**

**Prince George**

**Drury, Robert V.**

**1930 - September 3**

**St. Mary's**

Drury, Wm. C.

1927 - August 7

Prince George

Drury, William M.

1927 - May 7

Baltimore

Drury, William  
Owen

1926 - December 19

Anne Arundel

Drury, William T.

1925 - November 9

Washington



**Dryden**

**1925 - November 13**

**Somerset**

Dryden ,

1932 - July 13

Worcester

Dryden ,

1932 - July 13

Worcester

Dryden, A. Lincoln

1932 - January 28

Somerset

Dryden, Addison Francis

1933 - August 23

Wicomico

Dryden, Annie

1924 - Jan. 29

Dorchester

Dryden, Annie S.

1925 - March 29

Worcester

Dryden, Annie  
Virginia

1924 - May 6

Wicomico



**Dryden, Bertha May**

**1929 - April 28**

**Worcester**

Dryden, Bessie

1931 - February 1

Somerset

**Dryden, Bessie  
                  Florence**

**1933 - June 25**

**Somerset**

Dryden, Biddie J.

1928 - June 11

Wicomico

**Dryden, Corolla**

**1925 - April 24**

**Somerset**

Dryden, David E.C.

1925 - August 18

Somerset

Dryden, David J.

1926 - August 14

Wicomico

Dryden, Dollie

1925 - July 19

Worcester



**Dryden, Edna V.**

**1929 - May 8**

**Wicomico**

**Dryden, Elwood**  
**Francis**

**1932 - August 19**

**Somerset**

Dryden, Emma

1927 - December 9

Somerset

Dryden, Ethel  
Sara

1924 - April 11

Somerset

Dryden, Francis E.

1926 - March 18

Worcester

Dryden, Grover  
Harrison

1930 - June 3

Worcester

Dryden, Harriett  
E.

1925 - March 11

Worcester

Dryden, Ida

Priscilla

1928 - September 28

Somerset



Dryden, James W.

1927 - November 7

Worcester

Dryden, Jane

1924 - June 22

Anne Arundel

Dryden, Jefferson

1930 - July 13

Worcester

Dryden, John

1927 - September 17

Worcester

Dryden, John E.

1933 - July 17

Wicomico

Dryden, Joseph H.

1926 - May 10

Worcester

**Dryden, Lewis L.**

**1924 - Dec. 13**

**Somerset**

**Dryden, Mandy**

**1929 - April 15**

**Worcester**



Dryden , Marion  
Kinzer

1932 - March 10

Wicomico

**Dryden, Mary**

**1929 - November 23**

**Worcester**

Dryden, Mary Ellen

1932 - March 21

Wicomico

Dryden, Mary Ellen

1930 - March 6

Worcester

Dryden, Mattie

1930 - March 23

Somerset

**Dryden, Minnie**

**1925 - November 12**

**Somerset**

Dryden, Nannie

1924 - Sept. 17

Wicomico

**Dryden, Nannie**

**1931 - January 2**

**Wicomico**



Dryden, Orlanda P.

1933 - January 12

Wicomico



Dryden, Robert J.

1931 - October 16

Wicomico

Dryden, Samuel  
Isaac

1926 - July 29

Worcester

Dryden, Sarah  
Elizabeth

1924 - Feb. 19

Somerset

Dryden, Sidney C.

1927 - May 10

Somerset

Dryden, Stewart  
Edward

1932 - April 16

Worcester

Dryden, W. H.

1927 - December 5

Somerset



Dryden, Whittington  
L.

1931 - July 3

Somerset



**Drzervicki, John**

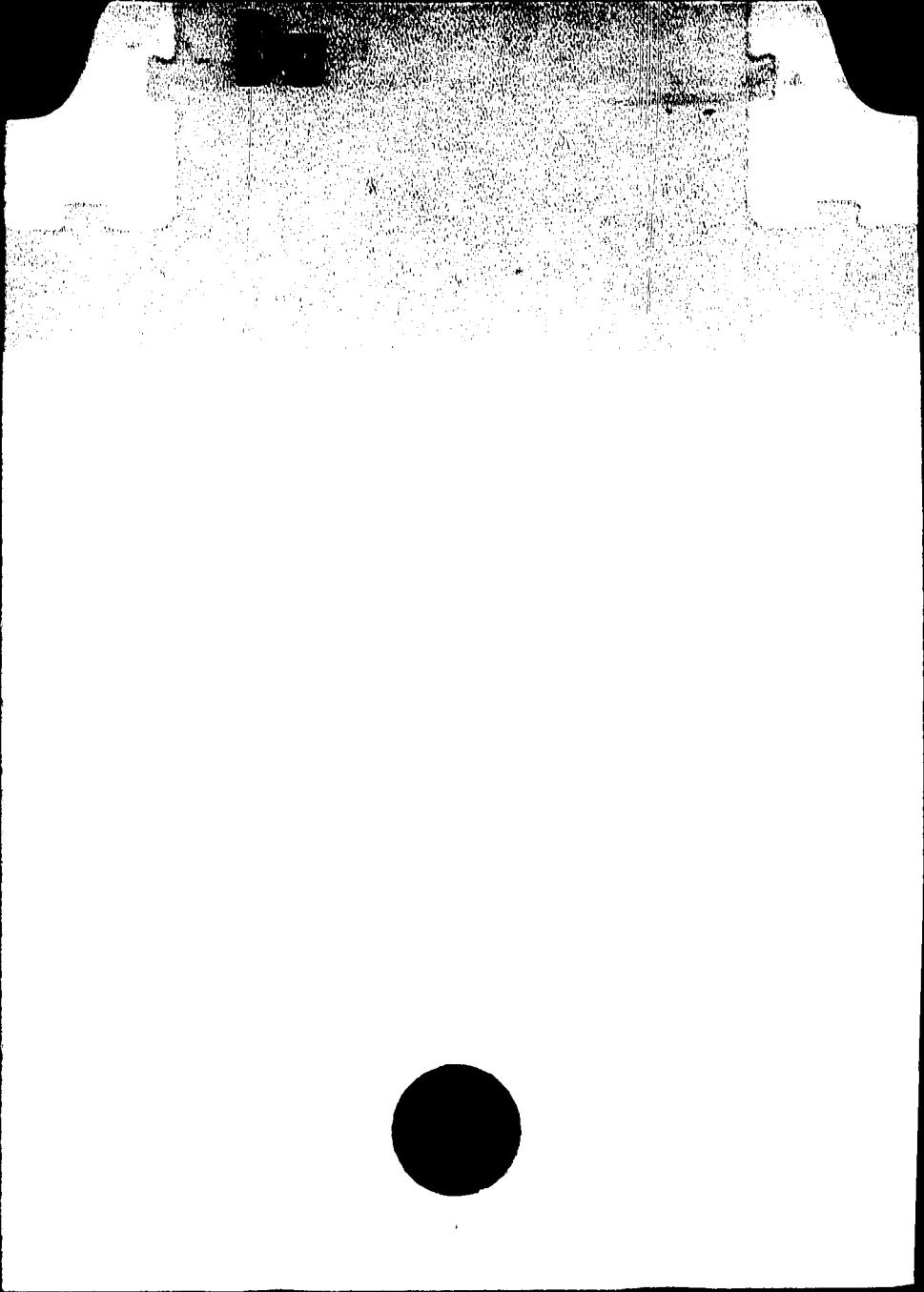
**1927 - June 4**

**Baltimore**

Dyrden, William T.

1926 - March 29

Worcester



DuBarry, Frank  
Duane

1927 - April 15

Baltimore

Dubbs, Mary F.

1933 - September 22

Carroll

Dubel, Amanda E.

1926 - March 14

Allegheny

Dubel, Annie Emelia

1924 - Dec.9

Frederick

Dubel, Anna Grace

1928 - February 3

Washington



Dubel, Jacob Henry

1929 - March 26

Washington

**Dubel, Lawson A.**

**1927 - December 15**

**Frederick**

Dubel, Lillian  
Gertrude

1932 - November 29

Washington

Dubel, Ura  
Catherine Romane

1927 - December 19

Washington

Duberke, Augusta

1930 - December 13

Anne Arundell

Dublin, Frances A.

1931 - April 5

Anne Arundel

Dublin, John

1928 - September 10

Montgomery

Dubois, Chas.

1932 - August 9

Baltimore



DuBose, Samuel Wilds

1926 - May 4

Worcester

**Dubuque, Joseph**

**1929 - January 26**

**Baltimore**

Du Brau, Anna Augusta

1930 - January 22

Allegany

Dubroca, Marcellite

1929 - March 31

Anne Arundel

Dubs, Jacob W.

1927 - March 14

Carroll

Duce, John Henry

1930 - June 16

Baltimore

Ducker, George  
Ephram

1933 - March 25

Baltimore

Duckery, Charles E.

1928 - January 22

Kent



Duckery, Dora

1930 - July 24

Kent

**Duckery, Elbert**

**1933 - July 10**

**Kent**

Duckery, Maggie

1928 - June 24

Kent

Duckett,

1924 - Nov. 10

St. Mary's

Duckett,

1931 - April 1

Prince George

Duckett, Benjamin

1928 - September 9

Prince George

Duckett, Bennett  
Franklin

1929 - February 27

Prince George

Duckett, Catherine  
Geneva

1925 - August 15

Anne Arundel



Duckett, Charity

1931 - March 24

Prince George



Duckett, Daniel

1926 - November 22

Prince George



Duckett, Fayette  
Porter

1931 - April 13

Prince George

**Duckett, Frank**

**1930 - November 18**

**Anne Arundel**

Duckett, George Benj.

1926 - June 6

Prince George



Duckett, Ida May

1924 - Feb. 15

Prince George

Duckett, Janie

1927 - October 15

Prince George

Duckett, John Francis

1929 - July 31

Anne Arundel



Duckett, Marie  
Elizabeth

1926 - June 19

Prince George

Duckett, Marion

1931 - November 9

Prince George

Duckett, Martha I.

1928 - September 24

Prince George

Duckett, Mary  
Catherine

1933 - April 17

Charles

Duckett, Nellie A.

1927 - January 3

Charles

Duckett, Pearline

1928 - July 29

Prince George

**Duckett, Rachel**

**1927 - October 29**

**Frederick**

Duckett, Sandy

1925 - May 18

Charles



Duckett, Sarah  
Frances

1928 - June 11

Prince George

**Duckett, Wilbert**

**1931 - October 8**

**Prince George**

Duckett, William  
Walter

1931 - March 25

Anne Arundel

Duckwall, Clara W.

1928 - February 20

Anne Arundel

Duckworth ,

1926 - March 11

Allegany

Duckworth

1927 - February 14

Washington

Duckworth, Agnes L.

1933 - December 27

Allegany

Duckworth, Amanda

1925 - January 6

Garrett





Duckworth, Anna  
Kontner

1927 - June 8

Allegany

Duckworth, Carrie  
Smouse

1925 - October 20

Allegheny

Duckworth, Charley

1930 - April 24

Garrett

Duckworth, Columbus

1930 - April 12

Garrett

Duckworth, Cora  
Catherine

1929- September 24

Garrett

Duckworth, Della  
Mary

1926 - June 5

Allegany

Duckworth, Dennis

1931 - December 2

Allegany

Duckworth, Ezkiel

1929 - May 19

Allegany



Duckworth, George H.

1927 - March 11

Allegany

Duckworth, George  
Mason

1927 - October 11

Allegany

Duckworth, Henry

1926 - February 19

Allegany



Duckworth, Libby

1932 - January 22

Allegheny

Duckworth, Mandana

1925 - April 19

Allegany

Duckworth, Mary E.

1928 - September 10

Allegany

Duckworth, Mary E.

1930 - June 29

Cecil

Duckworth, Mary L.

1932 - July 1

Allegheny



Duckworth, Moses

1929 - August 24

Allegany

Duckworth, Paul

1931 - October 14

Allegany

Duckworth, Russel H.

1926 - February 8

Allegany

Duckworth, Samuel  
John

1927 - January 11

Allegany

Duckworth, Stephen

1933 - December 26

Garrett

Duckworth, William

1927 - April 3

Allegany

Duda, Stanley  
George

1928 - December 8

Baltimore

Dudderar, Benjamin F.

1933 - January 9

Frederick



Dudderar, D. Alton

1928 - January 30

Frederick

Dudderar, Helen  
Virginia

1932 - October 23

Frederick

Dudderar, Margaret  
Ann

1930 - April 5

Carroll

**Dudderar, Mary A.M.**

**1925 - September 7**

**Frederick**

Dudderar, Warren  
Elsworth

1925 - February 8

Frederick

Dudeck, John J.

1925 - October 24

Harford

Dudek, Joseph

1925 - May 12

Harford

Dudler, George

1924 - Oct. 3

Queen Anne





Dudley, Carrie

1927 - October 22

Kent

Dudley, Catherine L.

1929 - August 27

Charles

Dudley, Charles  
Sylvester Jr.

1926 - June 5

Prince George

Dudley, Edna M.

1924 - April 10

Prince George

Dudley, Elma H.

1924 - Aug. 12

Talbot

Dudley, Emanuel

1931 - June 11

Kent

Dudley, George

1933 - April 7

Dorchester .



Dudley, J. F.

1931 - August 29

Calvert

Dudley, Jennie  
Rebecca

1924 - March 12

Charles

Dudley, John

1932 - April 17

Charles

Dudley, Maggie

1928 - December 6

Prince George



Dudley, Marion J.

1930 - February 8

Kent

Dudley, Permelia  
Eliza

1924 - July 9

Montgomery

Dudley, Richard T.

1925 - February 16

Kent

Dudley, Samuel  
Charles

1926 - November 23

Queen Anne



Dudley, Sarah Jane

1928 - January 30

Prince George



Dudley, Wm.

1924 - January 19

Allegany

Dudof, Tony

1925 - February 20

Baltimore

Dudrear, Albert

1932 - September 5

Carroll

Dudrear, Charles  
Edward

1929 - November 1

Carroll

Dudrear, Chas. Emory

1933 - November 27

Frederick

Dudrear, Maynard W.

1932 - April 14

Frederick

Dudrear, Washington  
Irving

1925 - September 18

Frederick



Dudrow, Annie  
Myrtle

1933 - May 13

Frederick

Dudrow, Charlotte  
Evelyn

1933 - July 12

Frederick

Dudrow, Louise

1930 - January 26

Howard

Dudrow, Sue Amelia

1931 - October 2

Frederick

Dueker, Lena

1929 - March 11

Baltimore

Duel, Henry James  
Hoover

1933 - June 3

Carroll

Duer, Clara J.

1925 - February 25

Worcester

Duff, Arthur  
Franklin

1933 - April 8

Baltimore



Duff, Corrine D.

1925 - May 2

Montgomery

Duff, Fletcher L.

1926 - February 7

Frederick

Duff, Jane C.

1930 - December 10

Harford

Duff, Katharine  
Johanna

1928 - April 4

Prince George

Duff, Wm. Archer

1932 - March 5

Harford

Duffenderfer, Henry  
Ephrahem

1924 - Dec. 26

Talbot

Duffey, Catherine  
Lee

1925 - October 22

Caroline

Duffey, Elizabeth

1927 - September 6

Washington



Duffey, Herbert A.

1926 - October 8

Washington

Duffey, Laura Semour

1933 - March 29

Caroline

Duffey, Mary Ellen

1931 - March 8

Washington



Duffey, Otho J.

1932 - February 4

Washington

Duffey, Sarah  
Ellen

1930 - June 16

Washington

Duffield, Harriet L.

1929 - June 5

Worcester

Duffield, Jane

1931 - February 6

Wicomico

Duffin, Edna Sewell

1933 - August 13

Prince George



**Duffin, John Henry**

**1931 - January 24**

**Montgomery**

Duffin, Lillie  
Manzella

1925 - February 8

Frederick

Duffin, Mary Anna

1925 - July 31

Montgomery



**Duffin, Mary Louise**

**1925 - March 13**

**Frederick**

Duffin, Rachael

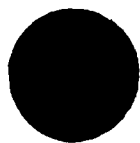
1928 - October 30

Montgomery

**Duffin, Rebecca**

**1925 - October 4**

**Montgomery**



Duffin, Sarah A.

1924 - Sept. 30

Montgomery

**Duffin, Vina Ella**

**1929- December 30**

**Montgomery**



Duffin, William O.

1925 - November 25

Frederick

Duffins, James W.

1924 - August 17

Calvert

Duffner, Mary

1932 - December 20

Harford

Duffy, Francis A.

1933 - November 30

Allegany

Duffy, James H.

1925 - March 22

Charles

Duffy, James Lucian

1934 - April 17

Prince George

Duffy, Joshua J.

1930 - December 21

Worcester

Duffy, Joseph  
Sylvester

1925 - October 30

Prince George



Duffy, Maggie

1930 - March 24

Worcester

Duffy, Marie M.

1930 - March 20

Allegany

Duffy, Mary A.

1932 - December 19

Allegany

Duffy, Mary Frances

1933 - May 21

Carroll

Duffy, Owen Patrick

1930 - March 10

Allegany

Duffy, Samuel H.

1932 - March 8

Washington

Daffy, Wm. Jr.

1929 - January 18

Wicomico

Dufour, John Frank  
Ruter; M.D.

1925 - June 10

Harford



Dufree, Wessie

1929 - April 4

Cecil

Dufty, Edward

1929 - October 29

Allegany

Dufty, Hattie S.

1925 - February 23

Allegany

**Dufty, Joseph**

**1931 - September 15**

**Allegany**

Dugan, Charles

1926 - May 18

Harford

Dugan, Elizabeth

1933 - September 16

Prince George

Dugan, John Francis

1930 - November 5

Anne Arundel

Dugan, Mary

1929 - February 25

Prince George



**Dugan, Mary**

**1929 - March 12**

**Allegany**

Dugan, Sarah C.

1927 - July 17

Harford

Dugan, Silas Wright

1925 - December 1

Allegany

**Duggan, Annie Laurie**

**1933 - March 6**

**Montgomery**

Duggan, Francis M.

1929- January 7

Montgomery



Duggan, Thomas  
Vincent

1933 - June 18

Anne Arundel

Dugsdale, Hester

1932 - January 16

Garrett

Duguid, George

1933 - April 15

Prince George



Du-Hadway, Dr. John

1926 - June 9

Caroline

DuHamel, Katie

1931 - October 16

Queen Anne

Duhamell, Henry S.

1926 - February 16

Cecil

Duhamell, Mary E.

1927 - June 13

Cecil

Duhamell, Robert A.

1928 - August 2

Cecil

Duhurst, Mary M.

1925 - November 13

Carroll

Duinken, Catherine  
L.

1927 - July 15

Howard

Duinken, John

1927 - January 6

Howard



Duke,

1930 - July 14

Calvert

Duke, Rev. Augustine

1933 - April 29

Anne Arundel

Duke, Bernard A.

1930 - August 27

Montgomery

Duke, Eliza Virginia

1924 - March 31

Calvert

**Dukes, Elizabeth  
Casson**

**1928 - February 3**

**Caroline**

**Duke, Harriett**

**1932 - October 8**

**Calvert**

Duke, Harry K.

1933 - May 13

Allegany

**Duke , James**

**1931 - January 10**

**Baltimore**



Duke, Katherine  
Carroll

1928 - October 8

St. Mary's

Duke, Lillie Agnes

1927 - April 15

Garrett

**Duke , Margaret  
Catherine**

**1929- September 8**

**Prince George**

**Duke, Marion**  
**Rebecca**

**1929 - December 22**

**Calvert**

Duke, Tony

1926 - March 23

Dorchester

Duke , William Danis

1932 - March 14

Calvert

Dukehardt, Emma A.

1930 - April 19

Baltimore

Dukehart, Charles A.

1932 - June 5

Baltimore



**Dukehart, John Henry**

**1927 - March 2**

**Frederick**

**Dukes, Alice A.**

**1928 - March 6**

**Worcester**

Dukes, Amanda J.

1929 - April 18

Worcester

Dukes, Annie C.

1929 - February 10

Worcester

**Dukes, Clara A.**

**1932 - June 24**

**Dorchester**

Dukes, Deborah

1929 - January 12

Dorchester

Dukes, Howard L.

1932 - April 12

Dorchester

**Dukes, Lewis  
Richardson**

**1929 - October 11**

**Queen Anne**





Dukes, Oliver P.

1924 - Oct. 22

Dorchester

**Dukes, Roland Wil-**  
**liam**

**1931 - May 21**

**Dorchester**

Dukes, Thomas  
Franklin

1927 - April 10

Dorchester

Dukes, Virginia  
Ethel

1933 - March 14

Wicomico

**Dukes, Willis**

**1928 - July 26**

**Dorchester**

Dulaney, Edward

1933 - November 6

Baltimore

Dulaney, Hattie

1930 - October 31

Queen Anne

**Dulaney, Ollie May**

**1929- March 29**

**Baltimore**



Dulaney, Rex  
Copeland

1933 - May 8

Cecil

**Dulany, John H.**

**1925 - July 29**

**Frederick**

Duley, Carroll F.

1924 - April 8

Baltimore

Duley, Freemont

1924 - Oct. 9

Montgomery

Duley, Howard James

1924 - February 5

Baltimore

Duley, James Lake

1930 - August 3

Prince George

Duley, Lake E.

1930 - April 22

Prince George

Duley, Mary Estelle

1928 - December 16

Montgomery



Duley, Myrtle

Beatrice

1933 - March 15

Montgomery

Duley, Susan G.

1925 - May 12

Montgomery

Duley, William  
Thomas

1929- March 20

Montgomery

Dulin,

1924 - Nov. 26

Talbot

Dalin, Albert C.

1930 - August 3

Queen Anne

Dulin, Alma B.

1930 - October 6

Talbot

Dulin, Anna M.

1932 - December 7

Talbot

Dulin, Blanch A.

1925 - January 1

Talbot



Dulin, Dartha J.

1930 - September 8

Talbot

Dulin, Gurtrude A.

1932 - July 7

Talbot

Dulin, Harry

1932 - November 9

Talbot

Dulin, John P.

1932 - December 8

Talbot



**Dalin, Lavinia Jane**

**1929 - December 6**

**Talbot**

Dulin, Lillie  
Washington

1929 - April 17

Somerset

Dulin, Mary C.

1927 - March 27

Talbot

Dalin, Mary V.

1925 - April 12

Kent



Dulin, Risdon

1930 - April 14

Queen Anne

Dulin, Samuel

1930 - November 30

Talbot

Dulin, Thomas H.

1932 - October 31

Talbot

Dulin, William B.

1930 - May 18

Talbot

Duling, Eunice M.

1931 - February 12

Kent

Dull, Amanda

1927 - April 21

Baltimore

Dull, Annie M.

1932 - December 26

Howard

Dull, Dorothy  
Catherine

1925 - November 11

Anne Arundel



Dull, John D.

1925 - August 4

Anne Arundel

Dull, Truman R.

1930 - March 12

Carroll

Dullinger, Jasper D.

1927 - July 4

Baltimore

Dumbauld, Mary I.

1925 - November 29

Carroll

**Dumbeck, Mikel**

**1928 - December 6**

**Harford**

Dumer, George

1932 - November 17

Anne Arundel

Dumer, John C.

1925 - February 9

Baltimore

Dumhart, George A.

1927 - March 19

Howard



**Dumhart, Mary**

**1924 - Dec. 7**

**Prince George**

**Dummond, Tyise**

**1924 - Sept. 7**

**Talbot**

**Dumschott,**

**1932 - October 15**

**Dorchester**

**Dun**



**Dunaja, Antoinette**

**1925 - January 9**

**Baltimore**

Dunall, Pheola  
Beatrice

1924 - Nov. 29

Frederick

**Dunbar,**

**1931 - April 10**

**St. Mary's**

**Dunbar, Justus C.**

**1926 - August 11**

**Cecil**



Dunbar, Margaret H.

1927 - May 22

St. Mary's

Dunbar, Reuben H. T.

1933 - August 30

Cecil

**Dunbar, William C.**

**1926 - November 29**

**Cecil**

**Dunbracer,**  
**Lemuel**

**1925 - November 29**

**Dorchester**

**Dunbrack, Anna  
Elizabeth**

**1933 - March 28**

**Allegany**

Duncan,

1924 - May 7

Allegany

Duncan,

1924 - May 7

Allegany

**Duncan,**

**1929 - August 18**

**Worcester**



**Duncan,**

**1932 - May 15**

**Allegany**

Duncan, Annie

1925 - October 26

Talbot

**Duncan, Benjamin G.**

**1930 - September 15**

**Harford**

**Duncan, Betty Lou**

**1928 - December 21**

**Cecil**

**Duncan, Christiana**

**1927 - June 28**

**Cecil**

**Duncan, David Isaac**

**1932 - March 17**

**Frederick**

Duncan, Fern Leora

1930 - June 21

Prince George

**Duncan George Riley**

**1926 - March 29**

**Cecil**



Duncan, Grace V.

1926 - October 28

Carroll

**Duncan, Harry M.**

**1927 - June 10**

**Baltimore**

Duncan, Henry  
Thomas

1924 - Jan. 7

Talbot

Duncan, Jack Harold

1926 - September 14

Baltimore

**Duncan, Leonard**

**1931 - June 30**

**Prince George's**

Duncan, Lester  
Eugene

1926 - February 21

Allegany

**Duncan, Lilian L.**

**1928 - July 17**

**Harford**

Duncan, Lydia E.

1925 - May 18

Baltimore



**Duncan, Martha Jane**

**1928 - November 25**

**Baltimore**

**Duncan, Martin L.**

**1928 - April 14**

**Washington**

**Duncan, Mary C.**

**1929 - September 16**

**Worcester**

**Duncan, Mary E.**

**1932 - October 18**

**Wiconico**

**Duncan, Mary Louisa**

**1931 - June 20**

**Montgomery**

Duncan, Mary  
Virginia

1924 - March 26

Talbot

Duncan, Minnie K.

1929 - January 15

Washington

**Duncan, Minnie Louise**

**1930 - March 19**

**Carroll**



**Duncan, Nancy E.**

**1932 - June 14**

**Worcester**

Duncan, Philip  
Herbert

1932 - January 14

Harford

Duncan, Rebecca

1932 - September 14

Harford

**Duncan, Mrs. Robt.**

**1928 - November 23**

**Wicomico**

**Duncan, Robert**

**1931 - June 19**

**Allegany**

**Duncan, Rosa F.**

**1929- November 15**

**Harford**

**Duncan, Samuel Park**

**1927 - September 17**

**Frederick**

**Duncan, William L.**

**1933 - November 17**

**Worcester**



Duncon, Walter Jr.

1924 - March 24

Allegany

Dundon, Richard  
Jerome

1927 - September 16

Frederick

Dundus, Willard G.  
Jr.

1932 - April 5

Washington

Dungart, Ruth

1927 - November 8

Talbot

Dungee, Eliza  
Stanley

1925 - May 23

Cecil

**Dunham, David H.**

**1927 - September 2**

**Baltimore**

Dunham, Erkureous F.

1933 - February 15

Caroline

Dunham, Henry Brown

1930 - September 23

Baltimore



**Dunham, James**

**1930 - April 11**

**Prince George**

Dunigan, George W.

1933 - August 25

Baltimore

Dunigan, Julia  
Cecelia

1932 - May 21

Howard

**Dunithan, Jane A.**

**1930 - October 13**

**Allegany**

Dunk, Anna E.

1924 - July 4

Allegany

Dunkel, Sophie

1930 - August 12

Howard

**Dunkerly, William E.**

**1932 - November 2**

**Howard**

**Dunkes, Lena**

**1929 - January 11**

**Baltimore**



Dunkin, Jeanette  
Fletcher

1924 - Nov. 28

Montgomery

**Dankin, Peter E.**

**1928 - August 6**

**Worcester**

Dunkinson, Olive

1930 - August 30

Talbot

Dunkley, Gladys May

1932 - September 9

Baltimore

See Hill



Dunlap, Amasa Hyde

1926 - March 15

Baltimore

**Dunlap, Charles**

**1925 - May 10**

**Prince George**



**Dunlap, Elizabeth V.**

**1932 - April 18**

**Cecil**

Dunlap, Emma Virginia

1932 - August 23

Baltimore



Dunlap, George J.

1925 - May 23

Allegany

**Dunlap, Hattie**

**1924 - Aug. 2**

**Frederick**

**Dunlap, John**

**1930 - March 25**

**Frederick**

**Dunlap, John J.**

**1927 - December 22**

**Allegany**

Dunlap, Luther

1924 - June 13

Washington

Dunlap, Melville S.

1924 - April 14

Anne Arundel

**Dunlap, William Earl**

**1932 - June 11**

**Anne Arundel**

Dunlap, William  
James

1933 - January 29

Cecil



Dunlon, Leah J.

1931 - February 10

Wicomico

Dunlop, Eva  
Elizabeth

1930 - October 5

Worcester

Dunlop, John C.

1926 - August 26

Cecil

Dunlop, Thos. C.

1932 - January 13

Worcester

Dunly, Elizabeth

1932 - April 26

Queen Anne

**Dunn,**

**1925 - August 26**

**Prince George**

**Dann, Adolphus**

**1931 - June 6**

**Wiconico**

Dunn, Ailene

1924 - July 27

Dorchester



**Dunn, Amelia Sidonia**

**1931 - January 11**

**Washington**

**Dunn, Anna H.**

**1931 - September 20**

**Dorchester**

**Dunn, Arthur**

**1927 - January 25**

**Anne Arundel**

Dunn, Arthur Jr.

1930 - December 27

Prince George

Dunn, Barbara  
June

1926 - August 23

Cecil

Dunn, Catherine E.

1925 - July 4

Allegany

Dunn, Catherine E.

1925 - July 4

Allegany

**Dunn, Charles W.**

**1928 - December 16**

**Dorchester**



5 - Decem

1 com 1 co

**Dunn, Delia June**

**1932 - June 25**

**Dorchester**

Dunn, Elijah N

1924 - March 26

Dorchester

Dunn, Elmer W.

1926 - March 18

Dorchester

**Dunn, Fannie**

**1929 - January 10**

**Wicomico**

**Dunn, Foshey**

**1927 - November 25**

**Wicomico**

**Dunn, George E.**

**1927 - March 4**

**Frederick**

Dunn, Gilbert S.

1925 - June 4

Wicomico



Dunn, Harriett R.

1926 - February 20

Kent

Dunn, Helen Loraine

1925 - October 8

Washington

Dunn, Horace S

1930- Jan 13

Wicomico

Dunn, J. William

1929 - May 22

Washington

Dunn, James

1925 - September 29

Allegany

Dunn, James, Sr.

1932 - March 14

Allegany

**Dunn, James**

**1931 - March 17**

**Washington**

Dunn, James Oliver

1929 - January 31

Washington



**Dann, John**

**1928 - October 22**

**Baltimore**

Dunn, John D. Jr.

1929 - July 20

Washington

Dunn, Laura Virginia

1929 - January 31

Washington

**Dunn, Lena S.**

**1931 - March 15**

**Dorchester**

**Dunn, Lidia E.**

**1933 - June 8**

**Wicomitoo**

Dann, Lillian  
Virginia

1926 - September 17

Allegheny

Dunn, Lorenza

1927 - December 24

Kent

**Dunn, Mable**

**1931 - July 3**

**Frederick**



**Dunn, Margaret E.**

**1932 - October 29**

**Wicomico**

**Dunn, Marion**

**1933 - July 17**

**Caroline**

Dunn, Marion Rose

1924 - Jan. 29

Washington

Dunn, Martha

1926 - October 22

Allegany

Dunn, Mary A.

1924 - Oct. 31

Wicomico

**Dunn, Mary A.**

**1927 - November 8**

**Kent**

**Dunn, Mary Cleveland**

**1926 - August 20**

**Baltimore**

**Dann, Mary N.**

**1929 - October 25**

**Wiconico**



**Dunn, Nathaniel**

**1933 - March 25**

**Allegany**

Dunn, Perry

1930- June 5

Wicomico

**Dann, Rufus B.**

**1930 - June 25**

**Queen Anne**

Dunn, Sarah

1926 - July 7

Kent

**Dann, Stella**

**1929. - January 17**

**Wicomico**

**Dunn, Thomas**

**1930 - November 15**

**Allegany**

**Dunn, Thomas J.**

**1933 - May 22**

**Kent**

Dunn, Walter T. Jr.

1928 - July 26

Worcester



Dunn, Wanner

1924 - May 25

Wicomico

**Dunn, William**

**1933 - June 17**

**Dorchester**

**Dunn, William B.**

**1931 - December 25**

**Dorchester**

Dunn, William Francis

1924 - June 5

Anne Arundel

Dunn, William  
Richard

1931 - February 13

Wicomico

Dunn, William T.

1933 - May 11

Wicomico

Dunn, Wynsor Leroy

1924 - Aug. 18

Howard

Dunnahugh, Harriett  
J.

1925 - October 21

Washington



Dunnaway, James K.  
Pope

1932 - September 20

Worcester

**Dunnigan, Catherine  
Killeher**

**1932 - November 7**

**Harford**

**Dunnigan, Harry**

**1929 - November 19**

**Baltimore**

Dunnigan, Joseph

1933 - November 2

Harford

Dunning, Annie

1933 - September 1

Montgomery

**Dunning, Jeanette M.**

**1931 - July 4**

**Queen Anne**

Dunning, William S.

1932 - January 5

Talbot

Dunnington, Annie  
Gantt

1927 - September 2

Charles



Dunnington, Georgia  
Hoye

1930 - August 16

Garrett

Dunnington, Jane M.

1924 - June 20

Prince George

Dunnington, Joseph

1933 - September 23

Prince George

**Dunnington, Wm.  
Edward**

**1930 - October 31**

**Prince George**

Dunnock, Annie Olivia

1933 - January 8

Dorchester



Dunnock, Emma A.

1926 - April 14

Frederick

Dunnock, M. Mae

1928 - August 12

Kent

**Dunnoek, Wm. John**

**1930 - August 12**

**Dorchester**



Dunphy, Mary  
Elizabeth

1930 - December 13

Baltimore

**Dunphy, William S.**

**1929 - January 1**

**Baltimore**

**Dunsen, Charles  
Henry**

**1929- April 12**

**Harford**

**Dunson, Francis**

**1925 - February 27**

**Carroll**

**Danson, Jesse  
Thornton**

**1930 - August 27**

**Anne Arundel**

**Dunston, John H.**

**1927 - October 5**

**Allegany**

Dunston, Louisa

1933 - November 7

Allegany

**Danston, Wm.**

**Franklin**

**1929 - November 5**

**Wicomico**



**Dunton, Charlie O.**

**1924 - Jan. 14**

**Worcester**

Dunton, Clarence

1932 - September 18

Dorchester

**Dunton, Scharlotte**

**1927 - July 30**

**Dorchester**

**Dunty, William**

**1929 - December 29**

**Baltimore**

**Dunwoody, William B.**

**1927 - September 17**

**Harford**

**Duphorne, Annie**

**1924 - June 14**

**Frederick**

**Dupont, Paul**

**1931 - February 24**

**Carroll**

Duppen, June  
Algather

1927 - November 16

Anne Arundel



Dupping, Geo. Edward

1932 - January 5

Calvert

Dupping, Gladys

1932 - July 23

Calvert

Dupping, Wesley Leroy

1932 - September 17

Calvert

(See Jones)

Duppings, Geo.  
Phillips

1933 - October 25

Calvert

**Duppins, Anna**

**1929 - March 29**

**Calvert**

**Duppins, Singleton**

**1928 - March 22**

**Frederick**

Duppins, William M.

1933 - August 7

Frederick

Dupplings, Sarah  
Lizzie

1925 - April 4

Calvert



**Dupree,**

**1930 - September 3**

**Harford**

Dupree, Minda

1932 - September 4

Harford

Dupree, Vermell

1933 - April 12

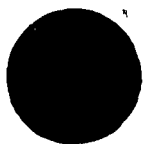
Cecil

DuPaul, Frank E.

1924 - Oct. 17

Prince George

**Der**



Durant,

1925 - February 8

Anne Arundel

Durant, Samuel  
Graham

1924 - July 31

Talbot

Durben, Philip Henry

1926 - March 21

Frederick



Durbin, Alfred

1926 - November 21

Harford

Durbin, Delia Agnes

1930 - January 27

Allegheny

Durbin, Elizabeth

1930 - July 2

Carroll

Durbin, Emma P.

1927 - January 8

Carroll

Durbin, Gene Tunney

1926 - November 11

Allegany

Durbin, Geo. Davis

1924 - March 26

Washington

Durbin, Mary L.

1931 - January 19

Allegany

Durbin, Myrtle D.

1926 - November 2

Alle gany



Durbin, Nathainal

1924 - March 1

Harford

Durbin, Thomas

1927 - July 12

Harford

**Durby, Gwyronie**

**1925 - April 30**

**Somerset**

**Durby, Henry**

**1926 - August 18**

**Somerset**

Durding, Annie  
Janette

1926 - July 8

Kent

Durding, Lillian

1926 - June 12

Frederick

Durding, Mary  
Elizabeth

1930 - July 17

Kent

Durding, T. Benjimen

1930 - February 22

Kent



Durff, William

1927 - March 3

Washington

Durgin, William H.

1930 - March 13

Baltimore

Durham,

1926 - November 14

Worcester



Durham,

1930 - July 30

Anne Arundel

.



Durham, Benjamin F.

1931 - June 30

Queen Anne's

Durham, C. L.

1928 - April 19

Prince George



**Durham, Dorothy M.**

**1929 - February 25**

**Kent**

Durham, Elizabeth

1929 - November 30

Anne Arundel



**Durham, James**

**Hooper**

**1929- August 8**

**Harford**

Durham, James S.

1925 - March 19

Baltimore

Durham, John Edgar

1927 - February 11

Anne Arundel

Durham, Margaret  
Maher

1931 - December 20

Cecil

Durham, Martha  
Virginia

1928 - June 7

Harford

Durham, Mary Virginia

1932 - November 5

Harford

Durham, Nathaniel  
T.

1925 - June 1

Harford

Durham, Percy Elmer

1931 - March 17

Anne Arundel



**Durham, Rachel Ellen**

**1932 - October 7**

**Cecil**

Durham, William Abel

1924 - April 28

Harford

Durham, Wm. T.

1925 - January 4

Cecil

Darkee, Henry B.

1927 - June 27

Baltimore

Durkin, Patrick J.

1932 - March 20

Baltimore

Durm, Dorothy May

1926 - February 21

Anne Arundel

**Durn, Etta Elma**

**1933 - June 13**

**Wicomico**

Darm, John J.

1928 - March 3

Anne Arundel





Durm, Lloyd A.

1931 - July 19

Anne Arundel

Durner, Bernard W.

1930 - April 21

Anne Arundel

Durner, Emily

1929 - January 20

Anne Arundel

Durner, George M.

1929 - May 9

Anne Arundel

Durner, Lester E.

1928 - June 26

Baltimore

Durner, Myrtle

1929 - December 24

Baltimore

Durney, Annie

1924 - April 28

Carroll

Durney, Austin

Joseph

1926 - November 17

Caroline



Durney, Wm. Charles

1925 - January 14

Queen Anne

Durnin, John Ward

1933 - June 8

Montgomery

Duror, George Tojan

1930 - January 29

St. Mary's

Duror, James D.

1930 - January 12

St. Mary's

Durr, Verna

1931 - June 24

Allegheny

Durst, Albert  
Bruce

1928 - June 30

Garrett

Durst, Annie Hogan

1933 - January 8

Anne Arundel

Durst, Charles  
Walter

1932 - July 8

Garrett



Durst, Cleo

Marcello

1928 - December 21

Garrett

Durst, Mrs. Delbert

1927 - March 7

Garrett

Durst, E. Manuel S.

1932 - January 21

Garrett

Durst, Eli

1928 - December 8

Garrett

Durst, Elijah

1926 - July 12

Garrett

Durst, Ellis Mann

1931 - July 31

Garrett

Durst, Emery  
Ellsworth

1927 - December 22

Garrett

Durst, George

1925 - April 19

Garrett





Durst, George  
Washington

1927 - January 4

Garrett

Durst, Georgia Anna

1933 - August 1

Garrett

Durst, Hattie E.

1928 - March 7

Allegany

**Durst, Henry**

**1929- January 11**

**Garrett**

**Durst, Isabell**

**1928 - January 11**

**Garrett**

Durst, James Madison

1927 - August 13

Garrett



Durst, John L.

1928 - May 17

Garrett

Durst, Josiah

1928 - July 16

Garrett



Durst, Lilly Myrtle

1928 - March 9

Garrett



Durst, Lloyd Sr.

1924 - November 6

Allegany

Durst, Lucinda

1933 - December 30

Garrett

Durst, Manoah

1930 - September 10

Garrett

Durst, Margaret

Elizabeth

1929 - February 1

Garrett

Durst, Mary

1931 - November 14

Allegany

**Durst, Mary Lavina**

**1932 - May 9**

**Garrett**

Durst, Maud M.

1925 - May 10

Garrett



Dur st, Michael Wesley

1931 - April 8

Garrett

Durst, Philadelphia

1927 - November 28

Carroll

Durst, Susan

1931 - November 2

Carroll

Durst, William  
Clarence

1925 - October 9

Garrett

Durst, William Hamilton

1933 - August 13

Garrett

Durst, William  
Heckman

1927 - September 25

Garrett

Dusell, Susan

1928 - January 7

Anne Arundel



Dushane, Vinton

1924 - August 17

Anne Arundel



Dushane, William H.

1925 - November 2

Cecil

Dushkin, Jennie

1933 - November 3

Carroll

Franklin

1928 - March 10

Frederick

**Dusing, Harriett A.**

**1929- September 28**

**Frederick**

Dusing, Jacob

1927 - February 20

Washington

Dustin, Anna M.

1929 - October 24

Prince George

Dustin, Charles C.

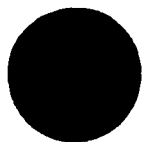
1927 - February 10

Cecil

Dustin, Clerance L.

1927 - February 9

Montgomery





Dustin, John R.

1927 - October 12

Prince George

Dustin, Laura B.

1928 - November 18

Montgomery

Dustin, Mary  
Francis

1930 - March 16

Prince George

Dustman, Henry

1925 - January 17

Baltimore

**Duston, Clinton**

**1933 - November 8**

**Montgomery**

Dute, Ellen

Margaret

1931 - September 13

St. Mary's

Dutrow, Amanda P

1931 - June 6

Montgomery

Dutrow, Amos W.

1927 - February 24

Montgomery



Dutrow, Ann Mariah

1931 - October 20

Montgomery

Dutrow, Annie M.

1928 - July 10

Frederick

Dutrow, Annie  
Rebecca J.L.

1930 - March 8

Frederick

Dutrow, B. Hershy

1924 - March 14

Montgomery

Dutrow, Eleanor  
Cooper

1933 - December 29

Frederick

Dutrow, Elizabeth  
Rebecca

1928 - March 20

Frederick

Dutrow, Fannie Amelia

1931 - December 18

Frederick

Dutrow, Granville  
Morrison

1931 - January 9

Frederick



Dutrow, Ida Beck

1933 - April 20

Frederick

Dutrow, Irene Fay

1924 - July 27

Washington.

**Dutrow, Jeremiah**

**1929- November 4**

**Frederick**

**Dutrow, Mary Naomi  
Elizabeth**

**1927 - March 25**

**Frederick**

Dutrow, Milton

George

1931 - April 7

Frederick

Dutrow, Minnie T.

1927 - March 15

Carroll

Dutrow, Rachel A.M.

1926 - April 21

Frederick

**Dutrow, Richard**  
**Stonewall**  
**Jackson**

**1929- April 29**

**Frederick**



Dutrow, Samuel P.

1931 - July 12

Carroll

Dutrow, Susan

1925 - September 12

Carroll

Dutrow, Victor, Jr.

1932 - January 15

Washington

Dutterer, Austin  
David

1933 - September 14

Carroll

Dutterer, Eli M.

1926 - December 15

Carroll

Dutterer, John T.

1927 - May 31

Carroll

Carroll

Dutterer, Sevilla  
Margaret

1925 - December 15

Carroll



**Dutton, Alfred**

**1932 - June 11**

**Baltimore**

Dutton, Charles Jr.

1930 - February 27

Dorchester

Dutton, Edith  
Alexain

1933 - October 27

Wicomico

Dutton, Elisha

1928 - September 8

Wicomico



Dutton, Emily L.

1925 - January 10

Harford

Dutton, George

1932 - April 28

Harford

Dutton, Harold E.

1929- December 13

Harford

Dutton, Henrietta

1927 - March 18

Wicomico



Dutton, Hester

1924 - March 1

Wicomico

Dutton, Howard  
Joseph

1933 - December 4

Baltimore

Dutton, Howard  
Joseph

1933 - December 4

Baltimore

**Dutton, James**

**1931 - March 8**

**Frederick**

Dutton, James

1931 - February 25

Wiconico

Dutton, John  
Gassaway

1925 - December 20

Howard

Dutton, Lee

1925 - May 27

Anne Arundel



Dutton, Lewis

1930 - September 4

Harford



Dutton, Lucy Colton

1933 - August 26

Montgomery

Dutton, Mary C.

1925 - August 6

Dorchester

Dutton, Mary Louise

1925 - September 3

Carroll

Dutton, Nellie C.

1933 - December 27

Prince George

**Dutton, Nettie**

**1932 - May 13**

**Wicomico**

Dutton, Othar Slade

1925 - September 16

Carroll

Dutton, Thomas A.

1927 - August 4

Wicomico

Duty, Benton B.

1926 - September 22

Prince George



Duval, Arthur P.

1925 - October 24

Baltimore

DuVal, Brice Barns

1931 - February 23

Baltimore

Duval, Catherin

1930 - April 17

Anne Arundel



DuVal, Eliza J.

1929 - April 9

Baltimore

DuVal, Emily  
                    Jeannette

1927 - December 31

Harford

Duval, Lewis Kemp

1932 - October 1

Howard

Duval, Louise B.

1927 - December 12

Prince George

Duval, Mary Hyde

1927 - December 27

Harford



Duvall

1926 - August 26

Anne Arundel

**Duvall,**

**1931 - September 3**

**Frederick**

Duvall, Aaron  
Russell

1924 - Feb. 4

Montgomery

Duvall, Alice I.

1924 - April 29

Montgomery

Duvall, Anna M.

1932 - January 8

Baltimore

Duvall, Annetta  
Frances

1926 - January 15

Prince George

Duvall, Annie A.

1927 - August 19

Carroll

Duvall, Annie  
Elizabeth

1931 - March 16

Prince George



Duvall, Belle E.

1950 - August 10

Frederick

Duvall, Benjamin

1931 - April 25

Anne Arundel

Duvall, Benjamin F.

1924 - May 9

Montgomery

Duvall, C. Milton

1924 - June 9

Anne Arundel

**Duvall, Catherine**

**1929- September 8**

**Carroll**

Duvall, Chas. E.

1925 - August 8

Baltimore

Duvall, Charles E.

1929- June 4

Frederick

Duvall, Charles H.

1932 - March 23

Allegany



Duvall, Charles J.

1932 - March 25

Prince George

Duval, Charles  
Milton

1925 - August 11

Anne Arundel

Duvall, Chas. S.

1925 - March 2

Montgomery



Duval, Clarence H.

1932 - August 8

Allegheny

**Duvall, Claude Upton**

**1933 - June 22**

**Montgomery**

Duvall, Clinton

1927 - April 5

Howard

Duvall, Delia

1926 - June 28

Montgomery

Duvall, Donald M.

1932 - September 25

Montgomery



Duvall, Doris V.

1933 - December 10

Frederick

Duvall, Edward W.

1930 - January 2

Howard

Duvall, Ella

1933 - May 22

Montgomery

Duvall, Emma

1932 - February 16

Anne Arundel

Duvall, Emmie W.

1929 - October 6

Howard

Duvall, Ernest

1924 - August 29

Anne Arundel

Duvall, Ernest R.

1926 - November 26

Anne Arundel

Duvall, Fannie Waters

1933 - March 6

Anne Arundel



Duval, Frances

1927 - May 21

Montgomery



Duvall, Frances Anne

1933 - January 19

Anne Arundel

Duvall, Francis

1930 - April 29

Frederick

Duvall, Francis A.

1932 - October 12

Anne Arundel

Duvall, Genevieve  
Virginia

1930 - April 8

Frederick

Duvall, George T.

1928 - April 3

Prince George



Duvall, George W.

1932 - December 20

Howard

Duvall, Hattie

1926 - September 8

Carroll



Duvall, Henrietta  
Ritchie

1927 - February 16

Frederick

Duvall, Herbert W.  
MCK.

1932 - September 11

Frederick

*[Faint, illegible handwritten text]*



Duvall, Herman

1924 - October 9

Carroll

Duvall, Ida May

1924 - September 21

Carroll

Duvall, Isabell

1933 - January 14

Anne Arundel

Dural, Ernest  
Agustus

1926 - August 29

Anne Arundel

Duvall, James

1931 - October 31

Anne Arundel

**Duvall, James Edwin**

**1929- November 30**

**Frederick**



Duvall, Jesse J.

1928 - October 6

Carroll

Duvall, Joseph

1928 - August 18

Montgomery

Duvall, Joseph

1933 - March 29

Anne Arundel

Duvall, Joseph  
Bourne

1929- July 14

Prince George

Duvall, Joseph  
Willet

1931 - January 3

Anne Arundel

**Duval1, Josephine**

**1932 - June 3**

**Montgomery**

Duvall, Joshua W.  
Jr.

1931 - May 18

Montgomery



Duvall, Julia

Rebecca

1931 - January 24

Anne Arundel



Duvall, Kate P.

1932 - June 12

Baltimore

Duvall, Kent

1928 - December 12

Montgomery

Duvall, Laura M.

1930 - June 11

Montgomery

Duvall, Louise

1924 - September 7

Anne Arundel

Duvall, Lucy B.

1925 - June 20

Baltimore

Duvall, Malina Eliza

1932 - April 28

Montgomery

Duvall, Marcellus

1925 - June 28

Carroll

Duvall, Margaret M.

1924 - June 18

Carroll



Duvall, Margret

1926 - November 4

Anne Arundel

Duvall, Maria E.

1930 - June 5

Prince George

Duvall, Mary A.

1925 - August 31

Montgomery

**Duvall, Mary A.**

**1927 - March 11**

**Frederick**

Duvall, Mary E.

1924 - March 6

Carroll

Duvall, Mary E.

1930 - March 30

Montgomery

Duvall, Mary E.

1933 - March 29

Howard

Duval1, Mary I.

1927 - February 17

Anne Arundel



Duvall, Mary  
Margaret

1925 - April 23

Carroll

Duvall, Mary S. B.

1930 - September 28

Prince George

Duvall, Mollie C.

1925 - January 15

Frederick

Duvall, Myrtle  
Eunice

1924 - Dec. 2

Prince George

**Duvall, Nannie  
Bomer**

**1933 - June 7**

**Frederick**

Duvall, Orville  
Roy

1929 - August 27

Allegany

**Duvall, Ray Thomas**

**1928 - September 1**

**Montgomery**

Duvall, Richard

1932 - April 8

Carroll



Duvall, Richard

1924 - January 30

Anne Arundel

Duvall, Richard I.

1926 - August 10

Anne Arundel

Duvall, Richard L.

1931 - April 2

Montgomery

Duvall, Robert

1926 - September 13

St. Mary's

Duvall, Rosa Virginia

1933 - January 30

Frederick

Duvall, Rosie

1932 - July 25

Prince George

Duvall, Ruth  
Evelyn

1928 - January 5

Prince George

Duvall, Ruth J.

1927 - October 1

Howard



Duvall, Samuel Eligh

1924 - May 24

Prince George

Duvall, Samuel O.

1931 - June 8

Howard

Duvall, Sarah

1925 - November 3

Allegany

Duvall, Sarah  
Catherine

1929- March 21

Frederick

Duvall, Sarah  
Florence

1929 - April 24

Howard

Duvall, Sarah  
Frances

1926 - January 30

Prince George

**Duvall, Sherwood**

**1933 - June 8**

**Montgomery**

Duvall, Sprigg

1925 - February 27

Carroll



Duvall, Summerville

1924 - Nov. 17

Montgomery

Duvall, Vernon C.

1930 - September 16

Anne Arundel

Duvall, Walter

1929 - April 13

Anne Arundel

Duvall, William B.

1924 - April 5

Prince George

Duvall, William  
Clarence

1930 - December 3

Montgomery

Duvall, William  
Edward

1924 - March 17

Montgomery

Duvall, William  
Edward

1933 - December 25

Baltimore

Duvall, William  
Franklin

1933 - December 20

Montgomery



Duvall, William Spencer

1933 - August 11

Montgomery

Duval, Zachariah  
Thompson

1926 - August 20

Montgomery

Duyckinck, Aaron  
Longstreet

1931 - December 18

Cecil

Duyckinck, Willamina  
Pearl

1933 - December 27

Cecil

Dyer, William T.

1929 - July 21

Talbot

**Dvorak, Caroline**

**1929 - November 7**

**Baltimore**

Dvorak, Dorothea

1933 - November 30

Harford

Dwaayer, Helen  
Leota

1925 - April 16

Harford



**Dwaayer, John Paul**

**1931 - September 15**

**Harford**

Dwaayer, Sarah

Rebecca

1924 - March 13

Harford

Dwyer, Elsie Jane

1930 - April 1

Howard

**Dwyer, Frank**

**1929- March 29**

**Baltimore**

**Dwyer, Henry**

**1933 - November 23**

**Montgomery**

**Dwyer, Johanna**

**1924 - March 15**

**Montgomery**

**Dwyer, John David**

**1924 - Jan. 30**

**Montgomery**

Dwyer, Joseph

1933 - October 24

Talbot



**Dwyer, Lafayette L.**

**1932 - October 20**

**Montgomery**

**Dwyer, Martha Ellen**

**1932 - May 1**

**Montgomery**

**Dwyer, Mary Ellen**

**1929 - March 19**

**. Carroll**

**Dwyer, Minnie Ellen**

**1929- December 29**

**Montgomery**

Dwyer, Thomas

1933 - December 11

Allegany

Dwyer, William  
Hermann

1929 - March 4

Anne Arundel

**Dyba, Thomas Jr.**

**1928 - January 5**

**Anne Arundel**

Dycers, Mary C.

1926 - January 2

Prince George



Dyche, Charles P.

1927 - December 12

Allegany

Dyche, James

1928 - September 6

Allegany

Dyche, Levina

1924 - March 11

Allegany

**Dydings, Mabel**

**1933 - February 3**

**Anne Arundel**

**See Carter**



Dye, Alice Rebecca

1930 - January 11

Allegany

**Dye, Carrie J.**

**1925 - March 11**

**Harford**

**Dye, Clementine**

**1932 - October 14**

**Allegheny**

Dye, Edward

1925 - August 19

Allegany



**Dye, Elmer Eugene**

**1927 - July 22**

**Cecil**

Dye, James W.

1930 - February 13

Allegany

Dye, Joseph  
Clayton

1924 - May 20

Carroll

**Dye, Joseph E.**

**1931 - November 15**

**Harford**

Dye, Lizzie Ruth

1925 - November 10

Washington

**Dye, Margaret Ann**

**1929 - December 7**

**Allegany**

Dye, Mary

1930 - January 19

Allegany

**Dye, William B.**

**1929- February 14**

**Harford**



Dyer,

1932 - March 12

St. Mary's

Dyer,

1930 - February 13

Prince George

**Dyer, Albert**

**1929 - November 9**

**St. Mary's**

**Dyer, Alexander**

**1931 - December 19**

**Prince George**

**Dyer, Alonzo Louis**

**1932 - October 23**

**Montgomery**

**Dyer, Annie**  
**Gertrude**

**1928 - June 22**

**Charles**

**Dyer, Benjamin**

**1928 - March 20**

**St. Mary's**

Dyer, Carl Wheatley

1929 - August 19

Charles



**Dyer, Catherine**

**1932 - November 5**

**Allegany**

**Dyer, Charles**

**1925 - February 18**

**Montgomery**

Dyer, Charles T.

1932 - November 3

St. Mary's

Dyer, Edward  
Murray

1933 - October 26

Frederick

**Dyer, Elisha**

**1927 - December 8**

**Montgomery**

Dyer, Elizabeth

1927 - January 24

Carroll

**Dyer, Emma**

**1931 - September 2**

**Talbot**

**Dyer, George C.**

**1925 - August 16**

**Frederick**



**Dyer, Harrison**

**1931 - April 25**

**Anne Arundel**

Dyer, James Lloyd

1933 - April 11

Caroline

Dyer, Jane

1924 - Aug. 31

St. Mary's

Dyer, John Joseph

1926 - October 9

Baltimore

Dyer, Joseph Miles

1929 - April 6

Charles

Dyer, Louisa

Elizabeth

1926 - August 21

Charles

Dyer, Martha  
Elizabeth

1930 - July 17

Charles

Dyer, Mary Cecelia

1933 - December 27

Charles



**Dyer, Mary Cornelia**

**1929 - November 26**

**Prince George**

Dyer, Mary Webb

1926 - November 2

St. Mary's

**Dyer, Ralph**

**1933 - February 2**

**Talbot**

**Dyer, Raymond Wills**

**1925 - April 15**

**Charles**

Dyer, Robert

1924 - Aug. 21

Cecil

Dyer, Robert T.

1932 - March 6

Kent

Dyer, Shirley  
Eileen

1933 - November 24

Allegany

Dyer, Steven

1927 - March 26

Talbot



Dyer, Tersea M.

1924 - February 29

Baltimore

Dwyer, Thomas T.

1925 - February 15

Frederick

**Dyer, Walter R.**

**1931 - November 13**

**Frederick**



**Dyer, Williamanna  
Plant**

**1929- January 2**

**Prince George**

**Dyes, Sylvester**

**1928 - May 11**

**Dorchester**

**Dyke, John**

**1929- June 26**

**Frederick**

Dykes,

1928 - January 29

Wicomico

Dykes,

1928 - November 29

Worcester



Dykes, Alvin Lee

1926 - March 5

Wicomico

**Dykes, Austin**  
**Thomas**

**1930- February 10**

**Wicomico**

**Dykes, Charles H.**

**1931 - January 2**

**Wicomico**

Dykes, Daisey Marie

1932 - March 29

Worcester

**Dykes, J. Merrill**

**1931 - June 11**

**Wicomico**

**Dykes, Levin Handy**

**1929 - June 12**

**Somerset**

**Dykes, Lydia**

**1927 - November 24**

**Frederick**

Dykes, Matilda C.

1931 - August 17

Wicomico



Dykes, Naomi Belle

1930- June 28

Wicomico

Dykes, Sidney H.

1926 - February 17

Wicomico

**Dykes, Tabitha**

**1927 - September 10**

**Baltimore**

Dykes, Zilla A.

1933 - October 23

Wicomico

**Dymicki, Edward  
Marion**

**1928 - July 8**

**Anne Arundel**

Dynes, Laura

1926 - November 18

Charles

Dyott, Anna

1929 - August 22

Talbot

Dyott, Georganna

1926 - September 15

Talbot



Dyott, James A.

1927 - July 15

Talbot

Dyott, James M.

1927 - Spetember 18

Talbot

Dyott, James R.

1932 - January 10

Talbot

Dyott, John

1928 - January 10

Talbot

Dyott, Joseph Willey

1929 - October 18

Talbot

**Dyott, Mary A.**

**1932 - May 27**

**Talbot**

Dyott, Mary Matilda

1928 - December 28

Talbot

**Dyott, Ruth Skinner**

**1933 - June 26**

**Talbot**



Dyott, William A.

1924 - July 17

Talbot

Dyre, Mary A.

1930 - October 4

Caroline

Dyson,

1924 - Aug. 25

Montgomery

**Dyson**

**1925 - April 29**

**St. Mary's**

**Dyson, Andrew  
Alexander Jr.**

**1930 - March 4**

**Charles**

**Dyson, Catherine**

**1931 - October 5**

**Charles**

**Dyson, Catherine**  
**Virginia**

**1931 - August 20**

**Baltimore**

Dyson, Charity Ann

1933 - January 30

Carroll



Dyson, Ellen Wood

1928 - November 27

Montgomery

Dyson, Florence

1932 - February 9

St. Mary's

**Dyson, George M.**

**1925 - December 12**

**Charles**

**Dyson, George S.**

**1932 - October 5**

**Frederick**

Dyson, George W.

1932 - March 23

Charles

Dyson, Gertrude

1924 - June 11

St. Mary's

Dyson, Harriett

1930 - August 10

Prince George

**Dyson, Herman L.**

**1925 - November 23**

**Montgomery**



**Dyson, James E.**

**1930 - November 2**

**Charles**

Dyson, James Francis

1926 - June 23

St. Mary's

Dyson, James H.

1924 - Nov. 11

Charles

Dyson, James  
Richard

1927 - February 11

Carroll

Dyson, Jane  
Pricilla

1929 - October 20

St. Mary's

**Dyson, John Howard**

**1924 - Aug. 31**

**St. Mary's**

**Dyson, John Vincent**

**1931 - July 15**

**Charles**

Dyson, Joseph B. P.

1930 - February 10

Montgomery



Dyson, Katie  
Catherine

1924 - Feb. 9

St. Mary's

Dyson, Lucinda

1929 - March 9

Anne Arundel

Dyson, Margaret C.

1927 - February 10

St. Mary's

**Dyson, Margarite**

**1929- February 22**

**Prince George**

Dyson, Mary

1926 - August 29

Anne Arundel

Dyson, Mary Eliza

1932 - November 1

Montgomery

Dyson, Mary Jane

1932 - October 21

St. Mary's

**Dyson, Matilda**

**1926 - February 11**

**Montgomery**



**Dyson, Maud Mary**

**1925 - January 5**

**Charles**

Dyson, Monroe  
Jefferson

1925 - January 6

Baltimore

Dyson, Norval W.

1929 - May 22

Charles

**Dyson, Robert**

**1928 - November 30**

**Anne Arundel**

Dyson, Robert Penn

1925 - June 5

Carroll

Dyson, Samuel

1931 - April 23

Charles

**Dyson, Thomas E.**

**1929- January 7**

**Frederick**

Dyson, William

1928 - March 8

Montgomery



Dyson, William  
Clifton

1926 - October 20

St. Mary's

Dyson, William  
Herbert

1929 - January 30

St. Mary's

Dyson, William  
Clifton

1930 - October 13

St. Mary's

**Dyson, William O.**

**1928 - May 24**

**Charles**

**Dyson, William  
Thomas**

**1932 - November 24**

**Anne Arundel**

**Dyszynski, Karol**

**1933 - May 1**

**Baltimore**

Eackles, Benjamin O.

1925 - January 12

Allegany

**Eackles, John Will**

**1925 - March 22**

**Allegany**



**Backles, Mildred L.**

**1932 - March 19**

**Allegany**

**Eackles, Rachel**  
**Virginia**

**1931 - March 22**

**Allegany**

Eackles, Vernon

1926 - March 4

Allegany

Eader, Catharine  
Ebert

1928 - March 4

Frederick

**Eader, Charles**

**1930 - March 6**

**Frederick**

**Kader, Charles Elmer**

**1951 - April 30**

**Frederick**

Eader, Dorothy

1930 - April 14

Montgomery

Eader, Edward  
Milangton

1933 - September 17

Frederick



Eader, Florence M.

1925 - March 31

Washington

**Kader, Peter**

**Nantz**

**1928 - September 18**

**Frederick**

**Eader, Roy Garfield**

**1925 - June 25**

**Frederick**

**Bader, Susan Eliz.**

**1926 - September 26**

**Washington**

**Eader, Thomas**  
**Holliday Hicks**

**1927 - January 9**

**Montgomery**

**Eades, Minnie Edna**

**1925 - September 17**

**Anne Arundel**

**Eds**

**1928 - July 5**

**Anne Arundel**

**Eads, James T.**

**1930 - October 30**

**Baltimore**



**Eads, Rebecca**

**1929 - December 2**

**Anne Arundel**

**Eads, Samuel**

**1928 - April 9**

**Anne Arundel**

Eagan, Agnes

Phoebe

1931 - May 2

Allegheny

**Eagan, Francis P.**

**1924 - June 2**

**Baltimore**

**Lagan, Thomas**

**1932 - October 9**

**Montgomery**

**Hagen, Caroline**

**1929 - December 6**

**Calvert**

**Eagen, Margaret**

**1931 - December 14**

**Baltimore**

**Eaggleston, Mary**

**1927 - September 28**

**Prince George**



**Eaglan, Bertha Helen**

**1929- December 11**

**Montgomery**

**Eaglen, Caroline**

**1930 - June 1**

**Montgomery**

1931 - January 26

Dorchester

Eahel, Jacob S.

1924 - Aug. 2

Washington

Eakel, Ida F.

1929 - July 3

Washington

**Eakle, Allen Denton**

**1926 - April 23**

**Washington**

Eakle, Amanda C.

1927 - October 13

Washington

**Eakle, Beatrice**  
**Nataline**

**1929 - April 24**

**Washington**



**Eakle, George A.**

**1926 - March 28**

**Washington**

**Eakle, Joseph D.**

**1929 - April 10**

**Washington**

Eakle, Laura S.

1929 - May 15

Washington

**Bakle, Martin**  
**William**

**1933 - March 2**

**Frederick**

**Eakle, William**  
**Clarence**

**1932 - April 16**

**Washington**

**Eakle, William Henry**

**1926 - December 19**

**Washington**

**Eakie, William Lee**

**1932 - July 8**

**Washington**

**Eakle, Willis W.**

**1932 - November 22**

**Washington**



**Barhart, Eltinge  
Eugene**

**1929 - March 27**

**Carroll**

**Earhart, Emma C.**

**1933 - October 13**

**Washington**

**Earhart, John H.**

**1929 - January 10**

**Washington**

**Earl, Daisey**

**1924 - July 30**

**Cecil**

**Earl, Emma**

**1926 - May 14**

**Cecil**

**Earl, Laura Virginia**

**1926 - April 2**

**Baltimore**

**Earl, Robert H.**

**1932 - July 13**

**Baltimore**

**Earl, Rosa**

**1925 - July 17**

**Dorchester**



Earle,

1924 - Aug. 9

Queen Anne

**Earle, Adaline**

**1927 - May 29**

**Caroline**

**Earle, George**

**1933 - October 8**

**Prince George**

**Earle, Humphreys**

**1924 - March 12**

**Calvert**

**Earle, James**

**1924 - Dec. 3**

**Kent**

**Earle, James T.**

**1929 - July 1**

**Queen Anne**

**Earle, John A. Sr.**

**1924 - November 7**

**Baltimore**

**Earle, Lalie B.**

**1932 - May 8**

**Prince George**



**Earle, Margaret  
Virginia**

**1925 - October 17**

**Queen Anne**

Earle, Maria S.

1932 - July 15

Dorchester

**Barie, Mary F.**

**1932 - November 26**

**Caroline**

**Barle, Mary W.**

**1933 - May 23**

**Queen Anne**

Earle, Purnell  
Franklin

1930 - March 1

Queen Anne

**Carle, Robert H.**

**1928 - March 12**

**Frederick**

**Earle, Susie A.**

**1926 - January 20**

**Cecil**

**Earle, William G.**

**1933 - July 23**

**Baltimore**



**Earley, Annie**

**1929 - February 18**

**Washington**

**Barley, James A.**

**1932 - June 13**

**Washington**

Earley, James W.

1933 - September 19

Washington

**Barley, John**

**Franklin**

**1926 - October 4**

**Washington**

Earley, John  
William

1932 - March 12

Frederick

**Barley, John William**

**1930 - July 17**

**Frederick**

**Earley, Kathalene**

**1929- January 23**

**Frederick**

**Earley, Mary Ellen**

**1927 - February 23**

**Washington**



**Earley, Sarah  
Elizabeth**

**1929 - February 16**

**Washington**

**Earling, Emily C.**

**1928 - February 27**

**Baltimore**

**Early, Arthur M.**

**1926 - April 2**

**Frederick**

**Early, Charles**

**1927 - March 19**

**Frederick**

**Early, Georgia**  
**Washington**

**1932 - November 3**

**Prince George**

**Barly, Mary C.**

**1928 - October 22**

**Washington**

**Early, Virginia**  
**Cordelia**

**1924 - Feb. 20**

**Prince George**

**Early, Walter E.**

**1932 - May 30**

**Frederick**



**Earnest, John**

**1933 - December 12**

**Kent**

**Earnest, John**

**Millhiser**

**1924 - April 9**

**Prince George**

**Earnshaw, Betty**

**1930 - March 12**

**Washington**

**Barnshaw, Jeremiah  
K.**

**1928 - April 25**

**Washington**

**Barnst, Robert L.**

**1927 - March 26**

**Carroll**

**Earnst, Solomon**  
**Peter**

**1928 - June 14**

**Frederick**

**Barp**

**1929 - November 3**

**Montgomery**

**Earp, Charles Marion**

**1927 - December 11**

**Baltimore**



**Earp, Evaline Carr**

**1933 - March 3**

**Howard**

**Earp, Evaline Carr**

**1933 - March 3**

**Howard**

Earp, George G.

1928 - April 23

Montgomery

**Marson, Minnie F.**

**1932 - July 31**

**Allegany**

**Earson, Will F.**

**1927 - September 7**

**Allegany**

**Ease, Ardama**

**1929 - June 11**

**Somerset**

**Easely, German**

**1925 - February 9**

**Harford**

Easley, Harry  
Thomas Jr.

1926 - July 9

Harford



**Eason, Alexander  
Hobey**

**1932 - September 21**

**Talbot**

**Eason, Alexyine**

**1931 - December 6**

**Talbot**

**Bason, Janie**

**1933 - June 13**

**Talbot**

**Eason, Leroy**

**1927 - September 14**

**Harford**

**Eason, Mary**  
**Elizabeth**

**1930 - July 27**

**Talbot**

**Eason, Mary**  
**Elizabeth**

**1930 - July 27**

**Talbot**

**Eason, Ruth  
Virginia**

**1933 - October 17**

**Talbot**

**Eason, Samuel A.**

**1930 - November 12**

**Talbot**



**1928 - November 5**

**Dorchester**

**East, Audrey M.**

**1926 - August 10**

**Prince George**

**East, Bernis B.**  
**Wright**

**1929- July 15**

**Baltimore**

**East, Margarit  
Elizabeth**

**1927 - January 22**

**Somerset**

**Eastburn, Mary E.**

**1931 - September 27**

**Queen Anne**

**Easter, Mary**

**1928 - October 5**

**Talbot**

**Easter, Olivia H.**

**1925 - January 17**

**Talbot**

**Easterbrook, John**

**1930 - October 4**

**Montgomery**



**Easterbrook, Wm.  
Thomas**

**1926 - August 16**

**Montgomery**

**Easterday,**

**1926 - January 10**

**Washington**

**Easterday, Amanda  
C.**

**1933 - October 9**

**Washington**

1927 - January 10

Frederick



**Easterday, Clara B.**

**1926 - December 26**

**Washington**



Easterday, Daniel  
C.

1924 - Nov. 25

Washington

**Easterday, Edward F.**

**1933 - April 14**

**Washington**

**Easterday, Esta May**

**1927 - January 31**

**Frederick**



**Easterday, George W.**

**1930 - November 25**

**Frederick**

**Easterday, John W.**

**1925 - April 21**

**Frederick**

Easterday, Laura B.

1924 - Jan. 15

Washington

**Easterday, Lewis**

**1925 - September 13**

**Frederick**

**Easterday, Ludinda  
A.**

**1926 - October 8**

**Washington**

**Easterday, Martin  
Vanbureau**

**1924 - Mar. 9**

**Frederick**

**Virginia**

**1927 - February 24**

**Frederick**

**Easterday, Rosalie  
Margaret**

**1932 - December 26**

**Washington**



**Eastindye, Reva Mary**

**1925 - December 12**

**Cecil**

**Eastman, Evelyn**

**1930 - August 6**

**Prince George**

**Eastman, Iva**

**1933 - December 3**

**Anne Arundel**

**Easton,**

**1924 - February 6**

**Calvert**

**Easton,**

**1927 - February 16**

**Calvert**

**Easton,**

**1928 - April 22**

**Allegany**

**Easton, Alfred**

**1924 - May 19**

**Calvert**

Catherine

1931 - October 25

Washington



**Easton, Anna Rebecka**

**1932 - July 10**

**Anne Arundel**

**Easton, Annie E.**

**1928 - March 15**

**Montgomery**

**Easton, Bertha  
I.**

**1929 - May 5**

**Allegany**

**Easton, Carrie E.**

**1931 - August 2**

**Baltimore**

**Easton, Charles C.**

**1929 - May 18**

**Washington**

**Easton, Charles N.**

**1929 - May 25**

**Washington**

Easton, Daniel

1930 - August 29

Washington

**Easton, Ernest G.**

**1927 - March 4**

**Allegany**



**Easton, Franklin H.**

**1926 - December 4**

**Frederick**

**Easton, Harland  
Eugene**

**1927 - September 14**

**Carroll**

**Easton, Harry**

**1930 - December 15**

**Charles**

**Easton, Hazel**  
**Sadonia**

**1925 - September 17**

**Howard**

**Wasson, James**  
**Albert**

**1928 - April 10**

**Carroll**

**Easton, Jessie M.**

**1926 - July 4**

**Carroll**

**Easton, John W**

**1931 - September 25**

**Anne Arundel**

**Easton, Laura Jane**

**1926 - December 21**

**Anne Arundel**



**Easton, Margaret A.**

**1926 - December 19**

**Carroll**

**Easton, Marshall**

**1924 - July 30**

**Montgomery**

**Easton, Martha Ann**

**1926 - March 8**

**Montgomery**

**Easton, Maurice  
Clifford**

**1931 - March 12**

**Frederick**

**Easton, Sarah E.**

**1931 - August 27**

**Carroll**

Easton, Susan

1927 - December 26

Washington

**Easton, Washington**

**1933 - June 13**

**Anne Arundel**

**Boston, William**

**1929 - August 7**

**Allegany**



**Easton, Wm. J.**

**1924 - June 20**

**Montgomery**

**Easton, Zephia**

**1927 - February 10**

**Allegany**

**Eastridge,**

**1926 - November 26**

**Cecil**

**Eastwood, Eva G.**

**1927 - December 18**

**Montgomery**

**Eatmon, Twin 1**

**1933 - September 20**

**Anne Arundel**

**Eatmon, Twin 2**

**1933 - September 20**

**Anne Arundel**

**Eaton,**

**1926 - June 30**

**Allegany**

**Eaton, Albert Boyce**

**1924 - October 1**

**Allegany**



**Eaton, David**  
**Franklyn**

**1924 - February 25**

**Allegany**

Eaton, Edward  
Matthaniel

1924 - June 15

Anne Arundel

**See O'Brien**

**Eaton, George**

**1932 - August 2**

**Carroll**

**Eaton, Henry J.**

**1928 - April 8**

**Washington**

**Eaton, Horace**

**1931 - September 9**

**Cecil**

**Eaton, Ida M.**

**1929 - December 19**

**Queen Anne**

**Eaton, Ida N.**

**1932 - December 21**

**Wicomico**

**Eaton, James H.**

**1926 - August 31**

**Anne Arundel**



**Eaton, Levin Henry**

**1927 - September 29**

**Caroline**

**Eaton, Louis W.**

**1932 - January 11**

**Wicomico**

**Eaton, Margaret**

**1925 - June 7**

**Carroll**

**Eaton, Margaret**

**1931 - May 19**

**Carroll**

**Eaton, Mary J.**

**1924 - Jan. 14**

**Frederick**

**Eaton, Nancy**  
**Virginia**

**1933 - February 5**

**Montgomery**

**Eaton, Roland**  
**Ledwidge**

**1925 - April 25**

**Frederick**

1932 - April 17

Queen Anne



Eaton, William E.

1924 - Feb. 14

Cecil

**Eavers, Merle**

**Hannah**

**1931 - February 16**

**Baltimore**

**Eaves, Elsie May**

**1931 - February 1**

**Frederick**

**Eavey, Alice Edna**

**1931 - April 15**

**Washington**

**Eavey, Clementine E.**

**1929 - November 30**

**Washington**

**Havey, Laura**

**1926 - July 15**

**Washington**

Eavey, Margaret C.

1930 - May 20

Washington

**Eavey, Marion Jr.**

**1927 - October 20**

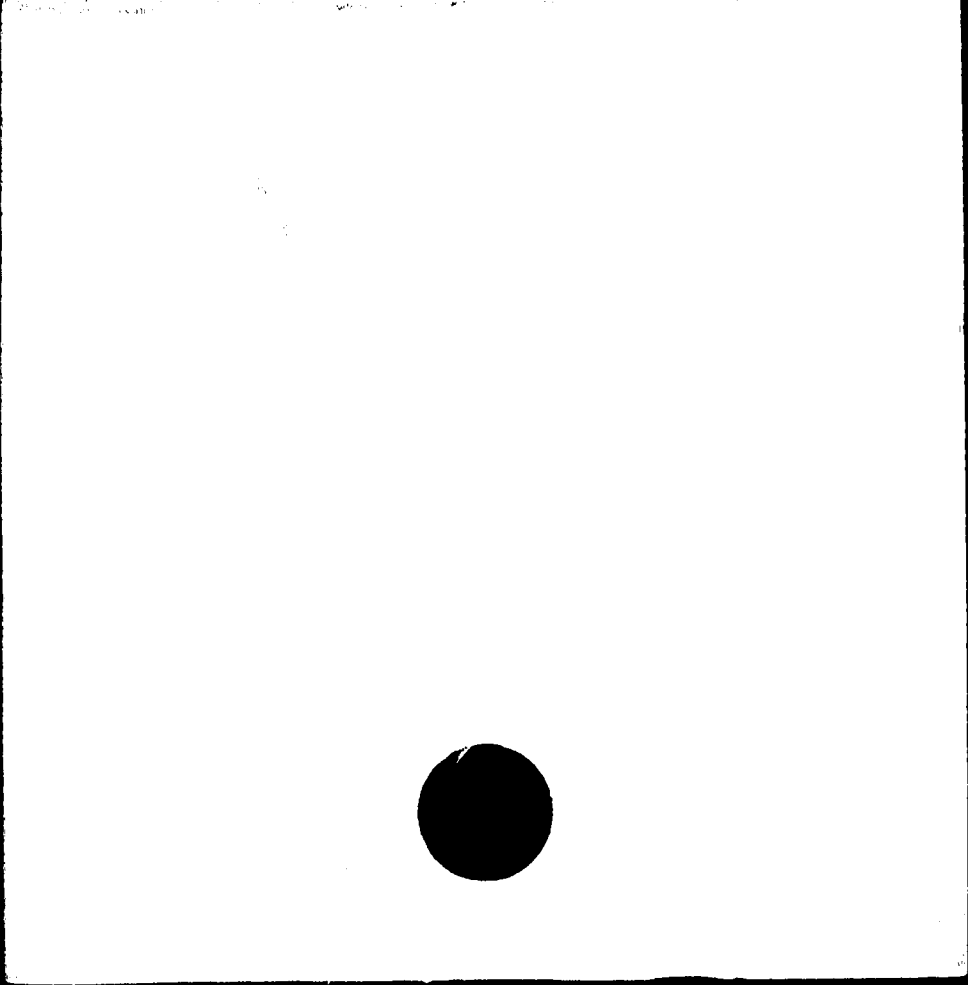
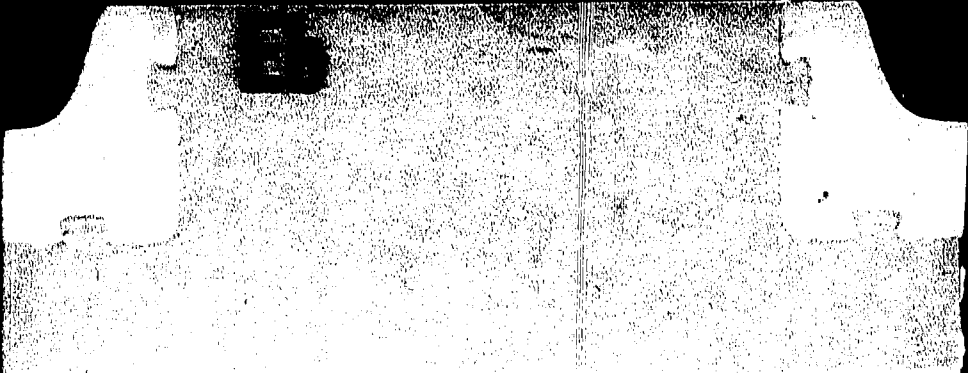
**Washington**



**Lavey, Roy Edward**

**1933 - July 20**

**Washington**



**Ebaugh, Adolphus R.**

**1926 - November 20**

**Carroll**

**Ebaugh, Amos**

**1925 - February 24**

**Carroll**

Ebaugh, Andrew

Jackson

1924 - June 15

Carroll

Ebaugh, David A.

1925 - September 10

Baltimore

Ebaugh, David Suel

1932 - February 10

Carroll

**Ebaugh, Francis T.**

**1926 - February 18**

**Baltimore**



Ebaugh, George  
Washington

1924 - August 28

Baltimore

**Ebaugh, Henry W.**

**1929 - January 3**

**Baltimore**

**Ebaugh, Howard H.**

**1927 - January 3**

**Carroll**

Ebaugh, Isabella C.

1930 - June 1

Baltimore

**Ebaugh, Joseph A.**

**1928 - August 26**

**Carroll**

**Ebaugh, Laura V.**

**1931 - August 14**

**Carroll**

Ebaugh, Mary

1930 - October 5

Baltimore

Ebaugh, Mary J. L.

1927 - December 29

Carroll



Ebaugh, Raymond L.

1931 - February 13

Wicomico

**Ebaugh, Roy Arthur**

**1933 - November 28**

**Carroll**

**Ebaugh, Sarah**

**1928 - April 23**

**Carroll**

**Ebaugh, Sarah**  
**Davidson**

**1926 - December 12**

**Montgomery**

Ebb, Beatrice

1924 - May 8

Prince George

**Ebb, Carey,**

**1932 - June 6**

**Anne Arundel**

Ebb, James Ambrose

1926 - March 8

St. Mary's

Ebb. Timothy

1932 - January 22

Baltimore



**Ebbert, Anna**

**1925 - February 27**

**Allegheny**

**Ebbert, Asenath E.**

**1924- Sept. 5**

**Carroll**

**Ebbert, Charles Wm.**

**1932 - November 23**

**Frederick**

**Ebbert, Dorothy**  
**Virginia**

**1924 - May 7**

**Frederick**

Ebbert, Emma Rebecca

1926 - May 11

Carroll

**Ebberts,**

**1929 - March 13**

**Howard**

**Ebberts, Emory  
Ignatius**

**1926 - December 6**

**Baltimore**

Ebberts, Francis C.

1931 - November 28

Montgomery



**Ebberts, John W.**

**1926 - September 17**

**Carroll**

Ebberts, Margaret  
Elizabeth

1924 - Feb. 23

Howard

Ebeling, Ashby C.

1931 - April 6

Anne Arundel

**Eberhardt, Jacob**

**1931 - August 10**

**Cecil**

Eberhardt, Meredith  
Anne

1932 - January 11

Talbot

**Eberhart, Alla  
Mildred**

**1925 - March 19**

**Anne Arundel**

**Eberhart, Mary**

**1927 - June 22**

**Baltimore**

**Eberhart, Sarah J.**

**1925 - November 17**

**Allegany**



**Eberle, Dew Wisdom**

**1928 - March 27**

**Anne Arundel**

Eberle, Rosa

1930 - December 27

Baltimore

Eberly, Henry B.

1927 - December 21

Washington

**Eberly, William**

**1926 - July 24**

**Allegany**

**Eberman, Norman F.**

**1926 - September 28**

**Anne Arundel**

**Ebersberger, Michael**

**1924 - August 11**

**Baltimore**

**Ebersole, Annie May**

**1929 - October 3**

**Washington**

Ebersole, Charles D.

1927 - March 2

Washington



**Ebersole, Charles  
Melvin**

**1931 - May 5**

**Washington**

Ebersole, Dennie M.

1927 - September 7

Washington

Ebersole, Henry

1924 - Nov. 16

Washington

**Ebersole, Henry**

**1933 - July 19**

**Washington**

**Ebersole, Kenneth W.**

**1928 - June 23**

**Washington**

Ebersole, Lenard G.

1933 - January 19

Washington

Ebersole, Margaret B.

1929 - May 30

Washington

**Eber sole , Mary**  
**Virginia**

**1932 - June 5**

**Carroll**



**Ebersole, Samuel D.**

**1928 - February 2**

**Washington**

Eberspacher, William

1933 - January 28

Dorchester

Ebert, Edward C.

1926 - January 25 or  
26

Frederick

**Ebert, Elizabeth**

**1931 - July 1**

**Caroline**

Ebert, Fredricka

1933 - December 18

Prince George

**Ebert, Joseph**

**1932 - August 19**

**Prince George**

Ebert, Mary

1933 - September 10

Baltimore

**Ebert, Thomas  
Wilson**

**1928 - February 5**

**Allegany**



**Ebler, Theodore  
Wesley**

**1932 - October 20**

**Baltimore**

**Eblings, Lena P.**

**1925 - March 20**

**Anne Arundel**

**Eby,**

**1931 - March 31**

**Washington**

Eby, Elam H.

1931 - July 21

Washington

**Eby, Emma Louise**

**1930 - October 26**

**Baltimore**

**Eby, George L.**

**1925 - March 27**

**Frederick**

**Eby, Nelson M.**

**1931 - July 29**

**Washington**

**Eby, Ruth**

**1930 - November 26**

**Somerset**



**Eccard, Effie M.**

**1929- December 26**

**Frederick**

Eccard, Virginia  
Bell

1926 - May 27

Frederick

**Eccles, Frank**  
**Margerson, M.D.**

**1926 - January 9**

**Talbot**

**Eccles, Ignatius A.**

**1928 - October 31**

**Frederick**

**Eccleston, Mirian**

**1930 - November 29**

**Baltimore**

Echard, Jacob Leo

1932 - September 12

Garrett

**Echard, Loretta R.**

**1925 - January 19**

**Carroll**

Echols, Mary C.

1933 - January 12

Harford



**Eck, Max**

**1932 - March 3**

**Prince George**

**Eckard, Charles  
Curtis**

**1929- December 13**

**Carroll .**

**Eckard, Elizabeth**

**1932 - October 27**

**Allegheny**

**Eckard, Ellen M.**

**1930 - June 6**

**Carroll**

**Eckard, Frederick  
Andrew**

**1926 - February 15**

**Carroll**

Eckard, Geo W.

1933 - January 13

Carroll

**Eckard, May J.**

**1924- March 19**

**Carroll**

**Eckard, Minnie A.**

**1928 - July 29**

**Carroll**



Eckard, Samuel Harry

1924 - June 17

Carroll

Eckard, Stanley  
Merele

1929 - March 9

Carroll

1925 - December 9

Carroll

Eckard, Wm. S.

1924 - Dec. 24

Carroll

Eckardt, Elizabeth

1930 - October 8

Baltimore

**Eckel, Betty M.**

**1929 - September 17**

**Washington**

**Eckels, Louise**  
**Foster**

**1931 - May 2**

**Harford**

**Eckels, Richard W.**

**1931 - March 19**

**Prince George**



**Eckenrod, Joseph**

**1929- May 21**

**Frederick**

Eckenrode, Alveda B.

1933 - August 26

Carroll

**Eckenrode, Frances  
C.**

**1926 - April 8**

**Baltimore**

**Eckenrode, George A.**

**1928 - December 17**

**Carroll**

Eckenrode, James E.

1929 - August 17

Washington

**Eckenrode, John  
Joseph**

**1933 - October 10**

**Baltimore**

Eckenrode, Julia  
Ann

1931 - November 16

Carroll

Eckenrode, Laura J.

1927 - October 29

Carroll



**Eckenrode, Lawrence  
Vincent**

**1930 - May 14**

**Baltimore**

**Eckenrode, Margaret  
Agnus**

**1924 - June 18**

**Frederick**

Eckenrode, Martha  
Louise

1926 - September 17

Frederick

Eckenrode, Myrtle  
Virginia

1924 - April 27

Frederick

**Eckenrode, Vincent  
J.**

**1931 - October 21**

**Frederick**

**Eskenredo, Viola  
Hildebert Fick**

**1930 - November 28**

**Baltimore**

**Ecker,**

**1928 - July 26**

**Carroll**

**Eoker, Alice N.**

**1933 - June 22**

**Frederick**



**Ecker, Bettie Marie**

**1929 - June 20**

**Carroll**

Ecker, Edward  
Clifton

1933 - November 18

Frederick

**Eoker, Emily Jane**

**1929- December 8**

**Carroll**

**Ecker, Florentine**

**1926 - December 31**

**Carroll**

**Ecker, George Monroe**

**1933 - February 16**

**Frederick**

**Ecker, George W.**

**1933 - June 21**

**Caroline**

**Ecker, Grace M.**

**1928 - September 1**

**Frederick**

**Ecker, Henrietta  
Camilla**

**1933 - June 30**

**Caroline**



**Ecker, John W.**

**1931 - December 8**

**Carroll**

**Ecker, Lena Viola**

**1928 - July 5**

**Frederick**

**Ecker, LeRoy Edward**

**1933 - July 18**

**Frederick**

Ecker, Lydia  
                  Virginie

1927 - November 23

Carroll

**Ecker, Margaret E.**

**1928 - May 22**

**Frederick**

**Ecker, Martha**  
**Jane**

**1928 - May 28**

**Carroll**

Ecker, Mary

1930 - May 10

Frederick

**Ecker, Maude**

**1925 - October 7**

**Frederick**



Ecker, Nettie E.

1931 - February 13

Frederick

**Ecker, Oneda Belle**

**1930 - September 16**

**Carroll**

**Ecker, Raymond**

**1925 - November 29**

**Carroll**

**Ecker, Richard M.**

**1930 - May 9**

**Frederick**

**Ecker, Roy E.**

**1931 - September 2**

**Frederick**

**Ecker, Susie Arah**

**1931 - November 29**

**Carroll**

Ecker, Thomas M.

1929 - February 2

Cecil

**Ecker, Woodrow Wilson**

**1927 - May 31**

**Frederick**



Eckers, Anna  
Eliza

1927 - July 17

Carroll

**Eckers, Catherine  
Rebecca**

**1933 - November 26**

**Baltimore**

**Eckers, Martha  
Jane**

**1933 - October 16**

**Baltimore**

**Eckers, Wm. Ovington**

**1933 - July 21**

**Baltimore**

**Eckert, Christian**

**1927 - June 23**

**Howard**

**Eckert, Emma F.**

**1925 - August 23**

**Howard**

**Eckert, Howard**

**1927 - July 3**

**Baltimore**

**Eckert, John F.**

**1931 - October 29**

**Anne Arundel**



**Eckert, Joseph, Jr.**

**1932 - October 4**

**Baltimore**

**Eckert, June E.**

**1932 - April 1**

**Baltimore**

**Eckert, Margaret**

**1929 - March 6**

**Anne Arundel**

**Eckert, Margaret**

**1931 - August 3**

**Washington**

**Eckert, Margaret R.**

**1930 - May 4**

**Frederick**

**Eckert, Stanley  
Milton**

**1925 - November 30**

**Carroll**

Eckert, William K.

1926 - July 11

Carroll

**Eokes, Elizabeth C.**

**1931 - January 8**

**Baltimore**



**Eckes, Pete**

**1926 - September 22**

**Baltimore**

**Richardt, George**  
**(Unknown)**

**1932 - September 15**

**Anne Arundel**

Eckhart, Charles  
Wesley

1924 - April 7

Baltimore

**Ecki, Anna K.**

**1925 - January 6**

**Dorchester**

**Eckle, Anna**

**1927 - April 2**

**Baltimore**

**Eckley, Rosalie M.**

**1927 - June 30**

**Montgomery**

**Eckman, George**  
**Albert**

**1927 - January 10**

**Allegany**

Eckman, Jesse Elias

1927 - March 23

Carroll



Eckmeyer, Barbara M.

1932 - July 4

Baltimore

Eckshaw, Helen

1932 - November 4

Allegany

**Ekstine, Charles  
Edward**

**1932 - May 27**

**Washington**

**Ekstine, David**

**1928 - January 13**

**Washington**

Eckstine, Eliza  
Virginia

1930 - January 10

Washington

Eckstine, Flora

1927 - March 22

Washington

**Eckstine, Samuel R.**

**1932 - November 14**

**Washington**

**Eckstorn, Mary**

**1926 - July 20**

**Queen Anne**



**Eckwall, Hulda**

**1927 - January 31**

**Montgomery**

**Ecobane, Josephine  
M.**

**1926 - August 29**

**Washington**

**Ecoff, Margaret  
Jane**

**1930 - June 8**

**Harford**

Eddington, W.T.

1928 - October 17

Dorchester

Eddins, Lillian

1925 - October 17

Allegany

Eddins, Robt.

William

1933 - February 12

Queen Anne

Eddleman, George G.

1928 - November 24

Cecil

Eddy, Charles F.

1927 - September 4

Baltimore



Edelen, Alfred

1924 - April 20

Charles

Edelen, Alivia  
Amanda

1931 - January 23

Prince George

Edelen , Burtha

1931 - April 11

Charles

Edelen, David

1929 - January 17

Charles

Edelen, Edward

1926 - March 8

Charles

Edelen, Girtrude

1932 - July 14

Charles

Edelen, Jas. Richard

1924 - June 2

Prince George

Edelen, James  
Rhineldo

1932 - March 9

Prince George



Edelen, James S.

1930 - April 9

St. Mary's

Edelen, Joseph

1929 - May 8

Anne Arundel

Edelen, Joseph

1932 - March 15

Charles

Edelen, Jos. Francis

1931 - November 21

Charles

**Edelen, Mary Louise**

**1928 - September 24**

**Charles**

Edelen, Mary  
Virginia Ruth

1933 - May 8

Charles

Edelen, Wm. Jos.

1928 - January 8

Charles

**Edelin, Amelia V.**

**1928 - May 2**

**Carroll**



Edelkamp, John  
Joseph

1930 - November 11

Prince George

Edelman, Elizabeth

1928 - February 27

Baltimore

Edemy, James Bruce

1930 - January 23

Carroll

Edenfield, Elsa J.

1928 - May 29

Cecil

1933 - November 21

Queen Anne

Edgar,

1926 - October 25

Dorchester

**Edgar**

**1929 - July 30**

**Wicomico**



**Edgar,**

**1932 - June 7**

**Dorchester**



Edgar, Katheline

1924 - Dec. 10

Dorchester

Edgar, Lydia  
Catharine

1929 - July 29

Wicomico



Edgar, Mamie F.

1926 - April 10

Dorchester

Edgar, Mary L.

1925 - June 10

Garrett



Edgar, Ruby Dorothy

1931 - February 17

Dorchester

Edge, Edith A

1929- April 22

Montgomery



Edge, Margaret  
Ellen

1928 - April 16

Caroline

Edge, Rhoda

1926 - March 16

Caroline



**Edge, Zedie**

**1932 - May 31**

**Wicomico**

Edgell, Sarah E.

1925 - February 24

Talbot

Edger, Ella  
Hubbard

1929 - January 23

Dorchester

**Edie, William Smith**

**1928 - September 11**

**Harford**

Eding, Gerard J.

1931 - August 27

Anne Arundel

Edinton, Kate W.

1926 - November 5

Baltimore

Edison, James

1932 - July 20

Talbot

Edlavitch, Charles  
Louis

1929 - August 26

Baltimore



Edison, Elizabeth

1926 - June 8

Baltimore

Edler, James Harry

1927 - September 26

Howard

**Edlin, Thilma L.**

**1932 - December 31**

**Charles**

**Edlovitch, Pasha**

**1927 - December 20**

**Prince George**

**Edmond, Stewart**

**1927 - June 4**

**Wicomico**

**Edmonds, Charles W.**

**1932 - December 6**

**Carroll**

**Edmonds, Christina  
Marie**

**1930 - June 16**

**Cecil**

**Edmonds, Ida Helise**

**1989 - June 26**

**Frederick**



**Edmonds, Jacob R.**

**1925 - January 24**

**Washington**

**Edmonds, James Wm.**

**1931 - April 30**

**Baltimore**

**Edmonds, Thomas**

**1932 - July 29**

**Washington**

**Edmonds, William**

**1933 - October 24**

**Prince George**

**Edmondson, Belle**

**1930 - April 28**

**Allegany**

**Edmondson, Cora B.**

**1926 - April 10**

**Harford**

**Edmondson, Enoch**

**1933 - June 2**

**Montgomery**

**Edmondson, J.  
Oliver**

**1930 - April 26**

**Harford**



**Edmondson, James  
Joseph**

**1927 - January 3**

**Baltimore**

Edmondson John T.

1933 - September 12

Howard

**Edmondson, Josephine**

**1932 - November 15**

**Carroll**

Edmondson, Minnie  
Lucinda E.

1927 - April 7

Carroll

**Edmondson, Nancy**  
**Jane**

**1932 - March 8**

**Carroll**

**Edmondson, Sidney  
Catherine**

**1932 - May 20**

**Allegory**

**Edmondston, Amelia C.**

**1927 - June 27**

**Frederick**

Edmondston, Ann  
Agnes

1924 - May 1

Prince George



Edmonston, Everett

1926 - September 18

Frederick

**Edmonston, Mary  
Elizabeth**

**1925 - October 20**

**Montgomery**

**Edmonston, Ray  
Charles**

**1927 - September 3**

**Frederick**

**Edmonson, Isaac**

**1928 - October 5**

**Cecil**

Edmunda, Eyster W.

1924 - Jan. 16

Frederick

**Edmunds, Eliza T.**

**1931 - January 27**

**Dorchester**

Edmundson, Martha  
Elizabeth

1924 - March 29

Cecil

**Edmundson, Robert  
Asher**

**1931 - July 6**

**Harford**



Ednie, Douglas

1933 - May 14

Anne Arundel

**Edson, Mildred**

**1931 - February 28**

**Baltimore**

**Edward, Loyd**

**1925 - February 20**

**Anne Arundel**



Edwards,

1929 - October 21

Dorchester

**Edwards,**

**1929 - May 1**

**Baltimore**

(See Gaither)

Edwards,

1931 - July 4

Anne Arundel

Edwards, Alice

1929 - January 2

St. Mary's

Edwards, Alice

1930 - June 9

Baltimore



**Edwards, Alice Eva**

**1932 - April 8**

**Montgomery**

Edwards, Ann  
Elizabeth

1924 - March 23

Anne Arundel

**Edwards, Barbra**

**1928 - February 2**

**Charles**

Edwards, Benjamin

1933 - January 19

Montgomery.

Edwards, Calvin

1926 - November 23

Anne Arundel



Edwards, Charles

1929 - August 30

Allegany

Edwards, Clara

1932 - February 26

Carroll

Edwards, Claude S.

1924 - April 11

Baltimore



Edwards, Delia  
Lillian

1925 - August 30

Carroll

Edwards, Dorothy  
Elsie

1928 - September 22

Montgomery

Edwards, Dorothy  
Irene

1926 - November 4

Baltimore

**Edwards, Edna Edith**

**1932 - May 8**

**Anne Arundel**

**Edwards, Eliza Ann**

**1928 - February 11**

**Caroline**

**Edwards, Elizabeth  
Lowe**

**1926 - September 12**

**Baltimore**

Edwards, Elizabeth S.

1928 - November 29

Prince George

Edwards, Ellen

1924 - April 8

Anne Arundel



**Edwards, Eliza**

**1932 - April 17**

**Allegany**

**Edwards, Florence**

**1927 - February 17**

**Harford**

Edwards, George  
Albert

1931 - June 26

Anne Arundel

**Edwards, George D.**

**1930 - October 26**

**St. Mary's**

Edwards, George W.

1933 - January 10

Montgomery



Edwards, Granison

1926 - April 4

Anne Arundel

Edwards, Harriett  
Alice

1932 - March 31

Allegany

**Edwards, Henry**

**1929- April 12**

**Montgomery**



**Edwards, Henry**

**1929 - December 10**

**Wicomico**

Edwards, Ida

1932 - July 2

Montgomery

**Edwards, Ida Anna**

**1933 - March 27**

**Cecil**

**Edwards, Isaac**

**1931 - August 11**

**Frederick**

**Edwards, J.**

**1927 - February 21**

**Cecil**



**Edwards, James**

**1929- September 7**

**Prince George**

Edwards, James  
Garrison

1929 - March 21

Anne Arundel

Edwards, James  
Richard

1932 - November 19

St. Mary's



**Edwards, Jennie M.**

**1925 - December 17**

**Baltimore**

**Edwards, John**  
**Bishop**

**1929- March 11**

**Baltimore**

**Edwards, John E.**

**1926 - April 17**

**Anne Arundel**

**Edwards, John G.**

**1927 - June 29**

**Kent**

Edwards, John N., Jr.

1932 - February 6

Kent

Edwards, John W.

1924 - July 24

Anne Arundel

Edwards, Julia

1933 - September 24

Baltimore

Edwards, Landis A.

1933 - April 22

Allegany



**Edwards, Leora W.**

**1929 - September 8**

**Harford**

**Edwards, Lillian**

**1927 - February 8**

**Baltimore**

Edwards, Lilly

1926 - August 5

Anne Arundel

**Edwards, Louisa J.**

**1925 - January 11**

**Baltimore**



**Edwards, Louis E.**

**1928 - February 26**

**Frederick**

**Edwards, Mabel**

**1926 - December 7**

**Baltimore**



Edwards, Mandana

1926 - February 1

Allegheny

**Edwards, Margaret  
Theresa**

**1928 - March 20**

**Allegany**



**Edwards, Mary**

**1927 - April 8**

**Frederick**

**Edwards, Mary**

**1930 - September 28**

**Anne Arundel**

**Edwards, Mary E.**

**1926 - October 27**

**Queen Anne**

**Edwards, Mary  
Elizabeth**

**1929- November 3**

**Prince George**

**Edwards, Mary Huldah**

**1933 - March 12**

**Frederick**

Edwards, Mary  
Josephine

1926 - December 15

Caroline

Edwards, Mary Kate

1931 - February 18

Frederick

**Edwards, Mattie V.**

**1933 - March 20**

**Kent**



**Edwards, Mattie V.**

**1933 - March 20**

**Kent**

**Edwards, Mildred**

**1928 - February 29**

**Baltimore**

**Edwards, Nancy Jane**

**1925 - October 15**

**Harford**

**Edwards, Oliver**

**1928 - October 26**

**Washington**

**Edwards, Philip**

**1925 - January 25**

**Baltimore**

**Edwards, Raymond**

**1929 - February 4**

**Allegany**

**Edwards, Ralph**

**1931 - May 1**

**Washington**

**Edwards, Rebecca**

**1925 - March 24**

**Anne Arundel**





Edwards, Richard M.

1926 - September 17

Allegany

**Edwards, Richard W.**

**1927 - December 23**

**Harford**

Edwards, Robert

1933 - September 17

Somerset

See Jones

Edwards, Robert  
Ernest

1931 - March 31

Baltimore

Edwards, Sarah

1933 - April 22

Allegany

Edwards, Sarah M.

1924 - Dec. 4

Harford

**Edwards, Sarah  
Margaret Virginia**

**1929- August 31**

**Montgomery**

Edwards, Thomas

1928 - April 6

Kent



Edwards, Thomas  
Everett

1927 - August 12

Frederick

**Edwards, Wayne**

**1931 - December 7**

**Harford**

Edwards, Wilbur C.

1926 - September 18

Carroll

Edwards, Wilhelmina  
B.

1924 - Nov. 11

Cecil

**Edwards, Wm.**

**1928 - February 14**

**Anne Arundel**

**Edwards, William  
Henry**

**1931 - September 25**

**Anne Arundel**

**Ee**



Eels, Stanley

1927 - November 21

Washington



Eeste, Anna D.

1932 - March 31

Harford

**Effland, George  
Washington**

**1926 - April 9**

**Washington**

Efford, Annie  
Rodney

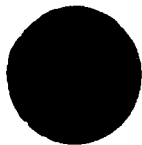
1932 - June 30

Prince George

Efford, George N.

1928 - April 5

Prince George



**Efford, Isabelle**

**1929 - October 18**

**Baltimore**

**Efford, John W.**

**1926 - January 6**

**Wicomico**



Efford, Nettie

1927 - November 10

Wicomico

Effort, John

1933 - September 12

Anne Arundel



**Efros, David**

**1928 - March 3**

**Baltimore**

**Egan, James P.**

**1931 - June 7**

**Prince George's**

**Egan, John**

**1932 - August 16**

**Prince George**

Egan, Magie

1926 - September 1

Calvert

Egan, Michael

1927 - January 22

Anne Arundel

Egan, Sarah  
Elizabeth

1929- February 27

Prince George



Egans, Mary  
Catherine

1924 - April 29

Calvert

Egans, Rachel

1932 - March 24

Calvert



Ege, John Frederick

1928 - March 8

Howard

Eger, Evalin  
Virginia

1931 - October 2

Garrett

**Egentemeyer, Mary**

**1929 - October 20**

**Baltimore**

**Eggen, John G.**

**1929- June 19**

**Carroll**

Eggers, Charles J.

1924 - July 20

Garrett

Eggerton, Ada

1932 - September 19

Baltimore

Eggers, Elizabeth  
Catharine

1933 - January 9

Garrett

**Eggleston, Robert  
Nelson**

**1932 - May 12**

**Prince George**





Eglsider, Ludwig E.

1927 - February 21

Talbot

Egner, Louis

1933 - January 12

Baltimore

Egta, Herman A.

1926 - November 28

Baltimore

Egolf, Howard S.

1931 - June 5

Allegany

Ehle, Mary  
Elizabeth

1933 - October 3

Cecil

**Ehlen, Frank**

**1929 - December 30**

**Baltimore**

Ehlers, Dora May

1924 - April 7

Carroll

**Ehlers, John Adam**

**1927 - December 12**

**Baltimore**



**Ehman, William**

**1929 - June 22**

**Frederick**

Ehrhardt, John J.

1928 - September 12

Baltimore

Ehrhardt, William  
C.

1928 - August 26

Baltimore

Ehrhart, Emma J.

1933 - February 11

Prince George

Ehringer, Raymond  
Linwood

1931 - February 19

Wicomica

Ehrhart, Henry

1930 - July 4

Baltimore

**Ehrman, Julius**

**1929 - June 14**

**Baltimore**

**Ehskam, Chares J.**

**1926 - July 24**

**Charles**