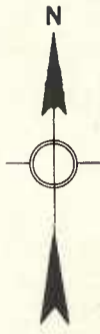


GENERAL HIGHWAY MAP TALBOT COUNTY MARYLAND

PREPARED BY THE
MARYLAND STATE ROADS COMMISSION
IN COOPERATION WITH THE
TRAFFIC DIVISION
U.S. DEPARTMENT OF COMMERCE
BUREAU OF PUBLIC ROADS
DATA OBTAINED FROM
STATE-WIDE HIGHWAY PLANNING SURVEY

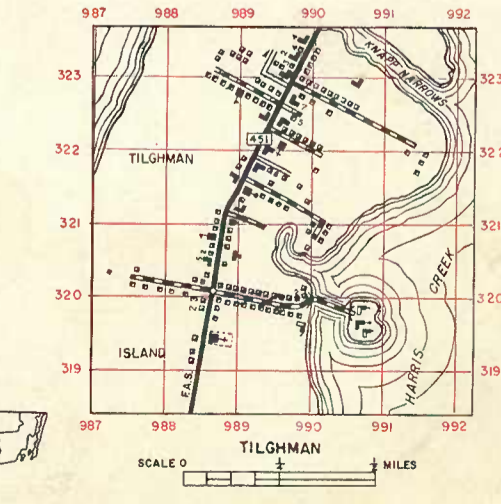
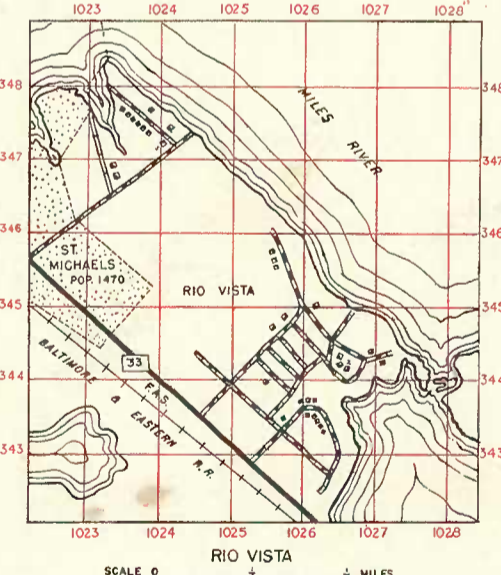
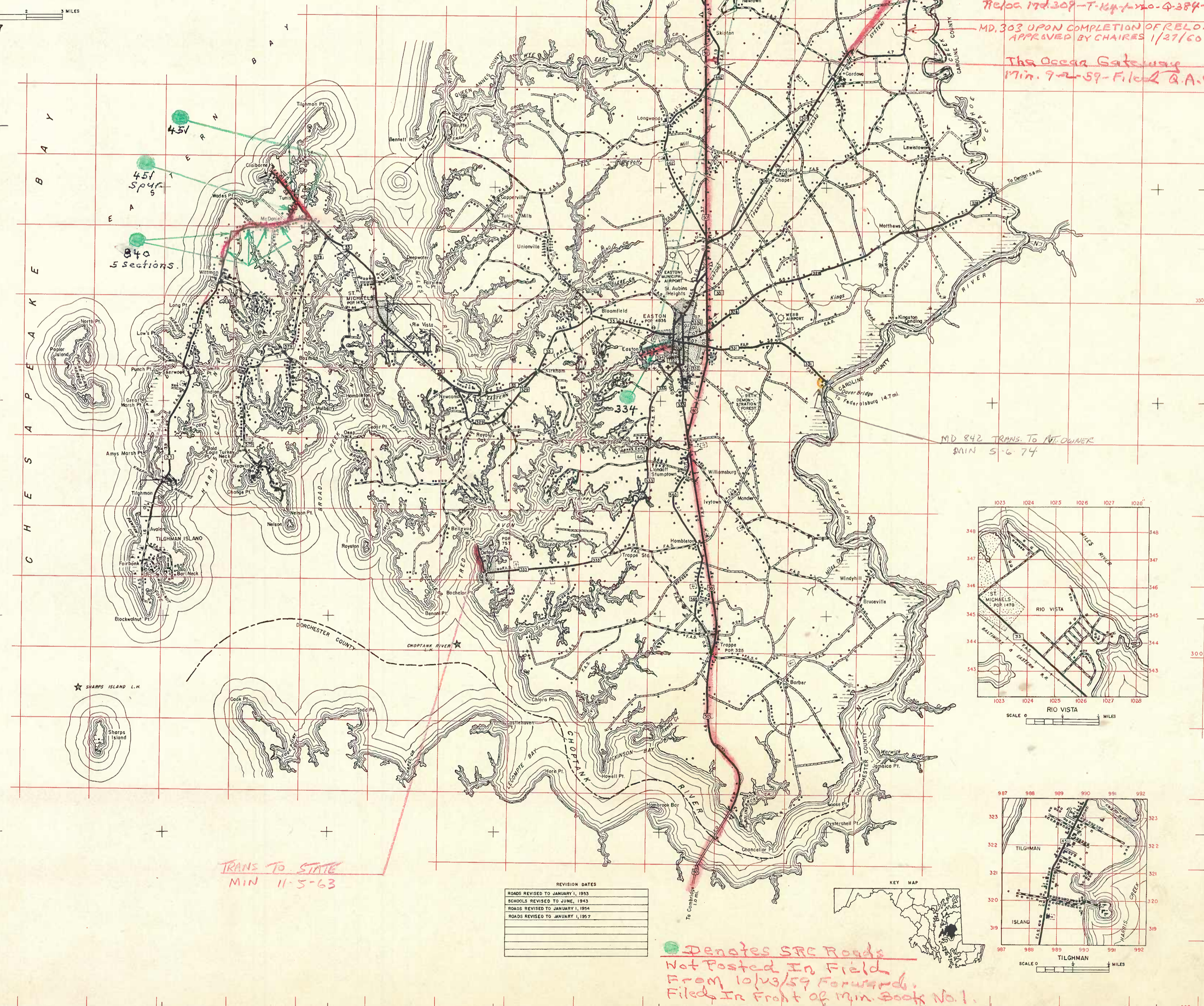
SCALE 1" = 3 MILES
1937



UNINCORPORATED PLACES	POPULATION	CULTURE IN UNINCORPORATED PLACES									
		WELLS	FARM UNITS	BUSINESS BUILDINGS	SCHOOLS	CHURCHES	INDUSTRIAL PLANTS	RELIGIOUS BUILDINGS	CEMETERIES	NOT SYMBOLIZED	
BELLEVUE	217	1	1	1	1	1	1	1	1	1	1
BOWMAN	182	1	1	1	1	1	1	1	1	1	1
CLAIBORNE	117	1	1	1	1	1	1	1	1	1	1
CORONA	169	1	1	1	1	1	1	1	1	1	1
EASTON NORTH	249	1	1	1	1	1	1	1	1	1	1
MATTHEWS	49	1	1	1	1	1	1	1	1	1	1
NEAVITT	285	1	1	1	1	1	1	1	1	1	1
NEWTOWN	115	1	1	1	1	1	1	1	1	1	1
ROYAL OAK	156	1	1	1	1	1	1	1	1	1	1
SHERWOOD	81	1	1	1	1	1	1	1	1	1	1
TRAPPE STATION	27	1	1	1	1	1	1	1	1	1	1
TUNIS MILLS	104	1	1	1	1	1	1	1	1	1	1
WITTMAN	117	1	1	1	1	1	1	1	1	1	1

LEGEND

- PRIMITIVE ROAD
- STATE BOUNDARY
- COUNTY BOUNDARY
- CORPORATE BOUNDARY
- UNINCORPORATED TOWNS AND CONNECTED AREAS
- RESERVATION BOUNDARY
- NATIONAL OR STATE
- RAILROAD - ANY NUMBER OF TRACKS USED BY SINGLE OPERATING COMPANY
- RAILROAD STATIONS AND STOPS
- RAILROAD CROSSING AT GRADE
- RAILROAD ABOVE ROAD
- RAILROAD BELOW ROAD
- NATURAL STREAM
- DOCK, PIER OR LANDING
- FERRY - TOLL
- HIGHWAY BRIDGE
- DRAWBRIDGE - HIGHWAY
- DRAWBRIDGE - WIDE RIVER
- ARCH - WIDE RIVER
- TRUSS - WIDE RIVER
- FARM UNIT
- OWELLING - OTHER THAN FARM UNIT
- CLADDING OR FARMING STATION
- BUSINESS AND POST-OFFICE
- STORE OR SMALL BUSINESS ESTABLISHMENT
- TOWN HALL, GRANGE OR COMMUNITY HALL
- NOTE
- CHURCH OR OTHER RELIGIOUS INSTITUTION
- SCHOOL OR OTHER EDUCATIONAL INSTITUTION
- FACTORY OR INDUSTRIAL PLANT
- CAMP OR LODGE
- CAMP GROUND
- SAW MILL (STATIONARY)
- MINE OR QUARRY OF ANY KIND
- TANKS
- WATER SUPPLY - STANDPIPE
- POWER PLANT
- SEASONAL OR SUMMER DWELLING
- STATE ROAD GARAGE
- FIRE ENGINE HOUSE
- SEASONAL INDUSTRY - CANNERY OR SMALL GRAIN MILL
- ATHLETIC FIELD OR AMUSEMENT PARK
- POST OFFICE
- COUNTY SEAT
- OTHER CITIES AND VILLAGES
- GOLF COURSE, COUNTY CLUB OR BOAT CLUB - G.C.C.B.C.
- S.C.S. STATE
- SMALL FARMS - C.P. COUNTY M.A.-MUNICIPAL
- COURTNEY
- CHURCH AND CEMETERY
- STATE POLICE SUB-STATION
- FRESH AIR FARM OR REST HOME
- LIGHTHOUSE
- SALT MARSH
- FRESH WATER MARSH
- COMMERCIAL OR MUNICIPAL AIRFIELD WITH SURFACED RUNWAYS
- BATHING BEACH OR SWIMMING POOL
- FIGURES ALONG ROADS GIVE MILEAGE BETWEEN THE POINTS MARKED
- UNITED STATES NUMBERED HIGHWAY
- STATE HIGHWAY
- FEDERAL AID PRIMARY HIGHWAY SYSTEM
- UNIMPROVED ROAD
- GRADED AND DRAINED ROAD
- SOIL SURFACED ROAD
- METAL SURFACED ROAD
- BITUMINOUS SURFACED ROAD
- PAVED ROAD
- FEDERAL AID SECONDARY HIGHWAY SYSTEM
- STATE LAND
- HOSPITAL
- PICNIC AREAS



REVISION DATES
ROADS REVISED TO JANUARY, 1933
SCHOOLS REVISED TO JUNE, 1943
ROADS REVISED TO JANUARY, 1954
ROADS REVISED TO JANUARY, 1959