

Md. 238 - Min. 8/24/60.

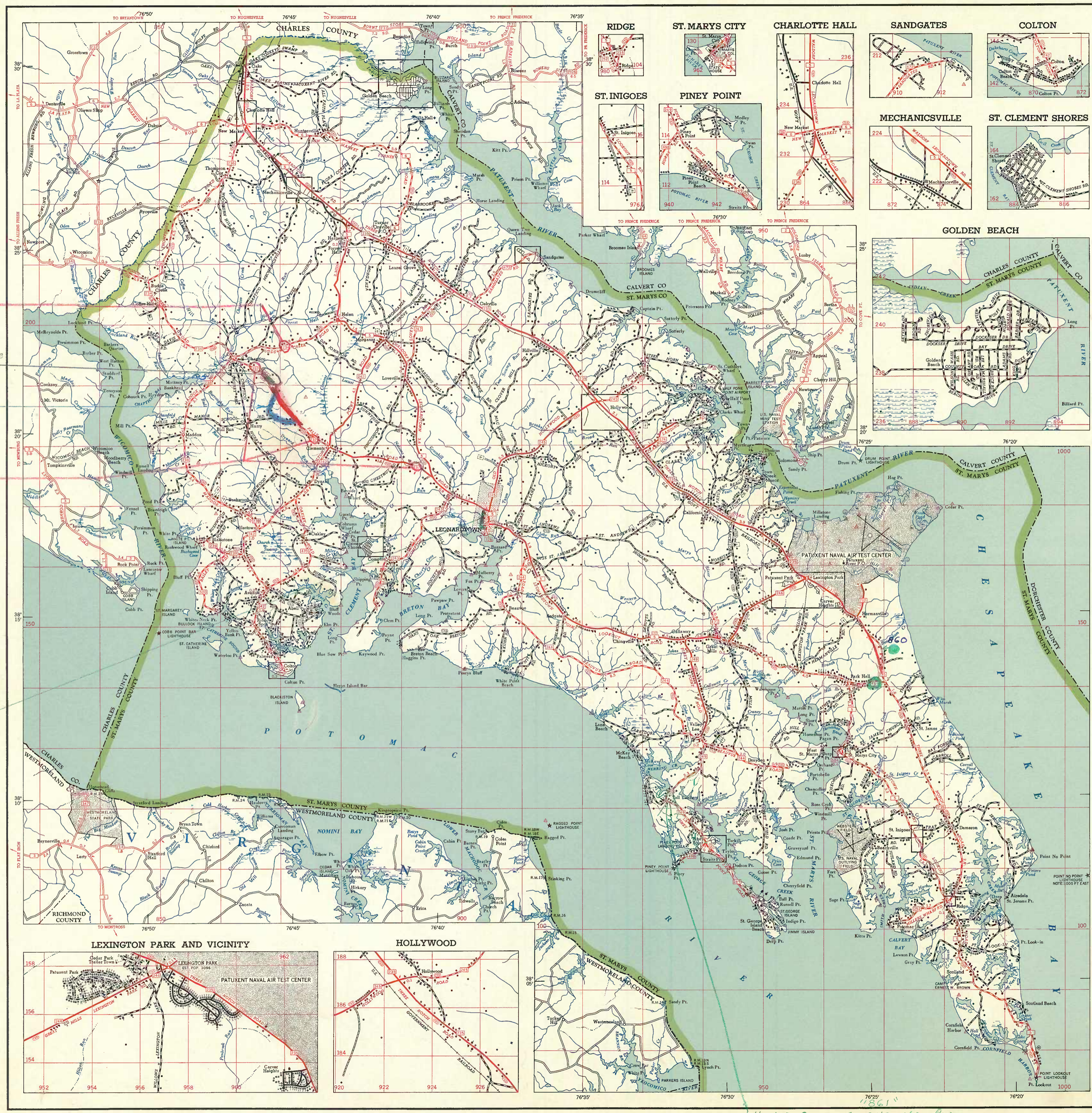
*Decided to property owner-nonprivate
Interdepartmental Letter 7/26/60*

*Transferred To Co Due To Heloc
Effective 7/1/60 - Min. 4/1/59.*

not under const.

Md. 234 - Min. 8/26/60.

*TRANS. MD 379 (LAWRENCE AVE + PARK AVE) TO
LEONARDTOWN MIN 7-22-66*



LEGEND

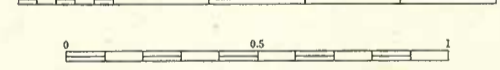
BOUNDARY LINES AND SCREENS	FARM UNITS, DWELLINGS, ETC.
STATE LINE WITH BOUNDARY MARKER	DWELLING - OTHER THAN FARM
COUNTY LINE	CONING DWELLING AND STORE OR OTHER SMALL BUSINESS
UNINCORPORATED URBAN COMPACT	TENANT HOUSE
INCORPORATED URBAN COMPACT	SEASONAL OR SUMMER DWELLING
BUREAU OF THE CENSUS	CAMP MEETING GROUND
INCORPORATED CITY OR VILLAGE	CAMP OR OTHER RECREATION INSTITUTION
NATIONAL RESERVATION	CEMETERY
STATE RESERVATION	FRESH AIR FARM OR REST HOME
MUNICIPAL RESERVATION	HOSPITAL
OTHER RESERVATIONS	
SMALL MONUMENT OR HISTORIC SITE	
	INDUSTRIAL
CITY AND VILLAGE CENTERS	STORE OR SMALL BUSINESS ESTABLISHMENT
STATE OR NATIONAL CAPITAL	FACTORY OR INDUSTRIAL PLANT
COUNTY SEAT	SEASONAL INDUSTRY: CANNERY OR GRAN MILL
OTHER CITIES AND VILLAGES	FRUIT OR PRODUCE PACKING HOUSE
	QUARRY
ROADS AND ROADWAY FEATURES	WAREHOUSE: GENERAL
PRIMITIVE ROAD	SARUNAL-STATIONARY
TRAIL-ROUNDEAU ROAD	WATER POWERED MILL
GRAVEL AND DRAINED ROAD	MINE-SHAFT OR DRIFT
SOIL SURFACED ROAD	GROUP OF STORAGE BARRIS: OIL OR GAS
GRAVEL OR STONE ROAD	SAUNING OR PUMPING STATION: GENERAL
BITUMINOUS SURFACED ROAD	KILN OR OVEN
PAVED ROAD	GREENHOUSE
DIVIDED HIGHWAY	NURSERY
PROJECTED ROAD	
U.S. NUMBERED HIGHWAY	EDUCATIONAL AND CORRECTIONAL INSTITUTIONS
STATE NUMBERED HIGHWAY	PUBLIC SCHOOL
FEDERAL AID PRIMARY HIGHWAY SYSTEM	OTHER EDUCATIONAL INSTITUTIONS
FEDERAL AID SECONDARY HIGHWAY SYSTEM	PUBLIC LIBRARY
FEDERAL AID URBAN HIGHWAY SYSTEM	OTHER EDUCATIONAL INSTITUTIONS
TRAFFIC CIRCLE	TOWN HALL, GRADE OR COMMUNITY HALL
TRAFFIC INTERCHANGE	CORRECTIONAL INSTITUTION
WISAGE BETHED ARROWS	COUNTY FARM
ROAD PASSAGE OBSTRUCTED	
	CONSERVATION AND RECREATION
RAILROADS	PUBLIC GROUND OR BOULDER POND SITE
STANDARD-GAUGE RAILROAD	DRIVE-IN THEATER
ELECTRIC INTERURBAN	BATHING BEACH OR SWIMMING POOL
STATION OR STOP	CAMPING SITE
CROSSING AT GRADE	CAMP OR LODGE
UNDERPASS - ROAD BELOW	FOURSE QUART
OVERPASS - ROAD ABOVE	FOREST RANGER STATION
TUNNEL	FISH HATCHERY
	GAME FARM
NAVIGATION AND DRAINAGE	GAME PRESERVE
RAILFERRY	BIOD SANCTUARY
COLLIERY	FRISHMENT PEAK AND LOOKOUT TOWER
CANA WITH LOCK	STATE PARK
NAUTICAL LIGHT	AMUSEMENT PARK
LIGHTHOUSE	COUNTRY CLUB
HIGHWAY BRIDGE - SPAN 20' OR MORE	MUNICIPAL PARK
RAILROAD BRIDGE	COUNTRY CLUB
COVERED BRIDGE	FACTORY CLUB
RIVERS AND STREAMS	FACTORY CLUB
INTERMITTENT STREAM	FARM GROUND - RACE COURSE, SPEEDWAY
DRAINAGE DITCH	RODING ACADEMY
RESERVOIR, POND OR LAKE	POWER PLANT
FORD	TRANSMISSION LINE WITH TRANSFORMER STATION
FRESH WATER MARSH	RADIO STATION
SALT WATER MARSH	HIGHWAY GARAGE
DAM WITH ROAD	COURT
OVERFLOW LAND OR WATKINSH FLOOD AREA	STATE POLICE SUBSTATION
	COUNTY POLICE STATION
	FIRE ENGINE HOUSE
	SARABAGE OR BURISH CAMP
	SENSE PROPHET BRIDGE
	WATER TOWER
	FILTRATION PLANT
MISCELLANEOUS MAP FEATURES	
PORT	
HORIZONTAL CONTROL STATION	
TOLL HOUSE	
RAILWAY	
	NOTE: ALL VICANT CULTURE INDICATED BY OPEN SYMBOL

NOTE: ROADS CORRECT TO JANUARY 1, 1957

GENERAL HIGHWAY MAP ST. MARYS COUNTY MARYLAND

PREPARED BY THE
MARYLAND STATE ROADS COMMISSION
TRAFFIC DIVISION
IN COOPERATION WITH THE
U.S. DEPARTMENT OF COMMERCE
BUREAU OF PUBLIC ROADS
DATA OBTAINED FROM
STATEWIDE HIGHWAY PLANNING SURVEY

SCALE IN MILES



SCALE FOR ENLARGEMENTS

1951
LAMBERT CONFORMAL CONIC PROJECTION



KEY MAP

*Donates SPC Roads Not Paved
In Field From 1/59 Forward
Filed In Front of Min Book No. 1*

4 OLD SECTS OF 249 NOT POSTED