

TRANS TO COUNTY
MIN 10-9-73

TRANS. MD 828 TO CO.
MIN 9-30-75

TRANS MD 120 TO GERMANTOWN INVEST. CO.
MIN 4-12-73

TRANSFERRED TO COUNTY
MIN 12-1-74

TRANS MD 901 TO COUNTY
MIN 12-27-75

MONTI VILLAGE AVENUE TRANS TO ST (NOW MD 124)
MIN 10-2-74

QUINCE OAKWOOD RD
TRANS TO STATE (NOW MD 124)
MIN 10-28-74

TRANS MD 114 TO TOWN OF GAITHERSBURG
MIN 7-30-74

TRANS TO STATE
MIN 10-9-73

MD 898-A TRANS TO CO.
MIN 9-8-75

SECT OF MD 898-A
TRANS TO ROCKVILLE
MIN 3-8-70

TRANS TO ROCKVILLE
MD 28; MD 898-A; SECT. RD
MIN 3-8-70

TRANS TO ROCKVILLE
MD 659, MD 676, MD 28-A,
MD 28-B MIN 7-28-59

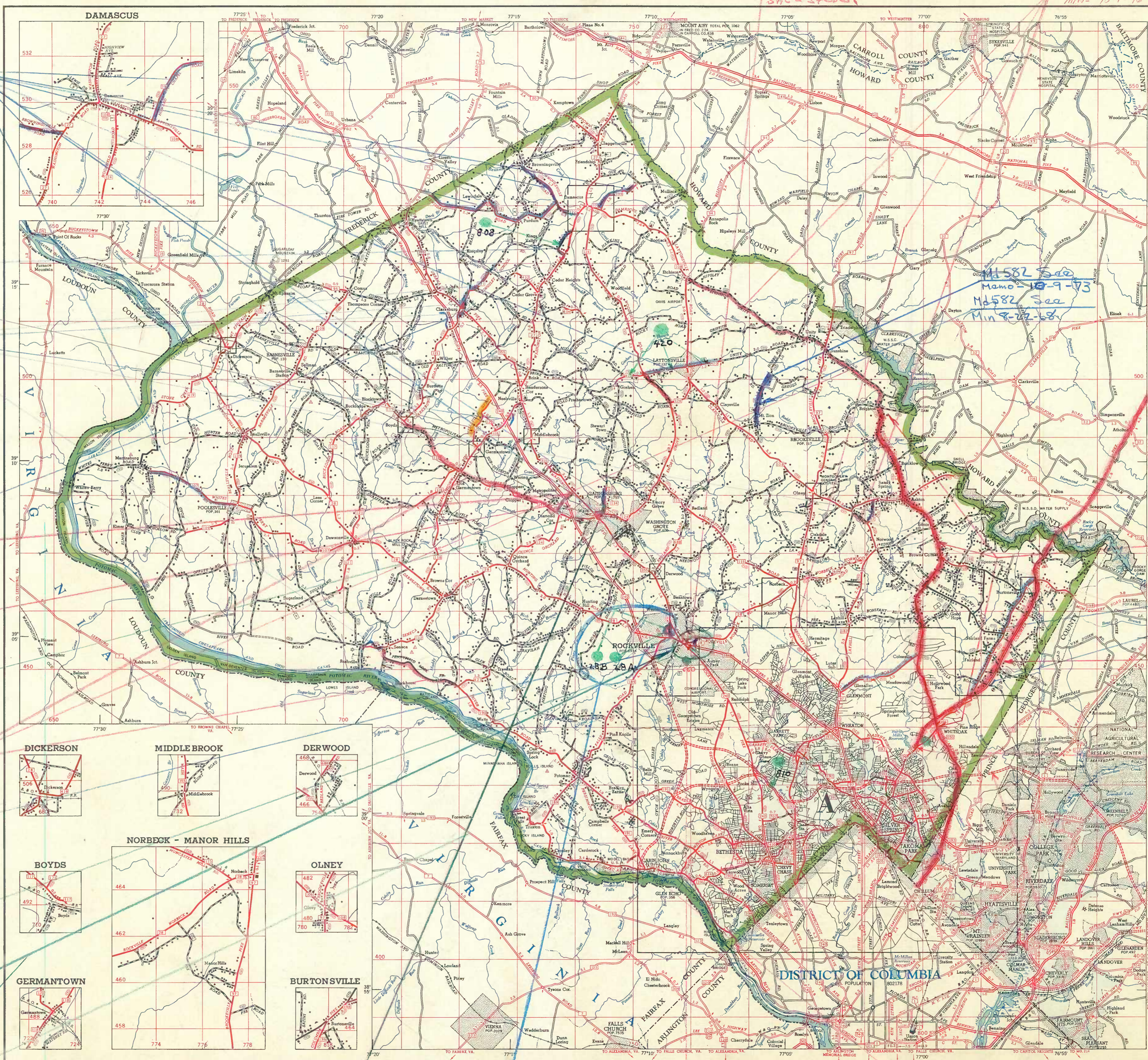
MIN 3-4-70 TRANS JEFFERSON ST TO STATE
TRANS MD 28 TO ROCKVILLE

MD 857 TRANS TO GAITHERSBURG
MIN 8-2-66

MD 28A 228B TRANS TO CO. effective 11/1/60
by min. 7-15-59

650 Not Posted
Letter 12-9-59

MAY TRANS TO STATE
MIN 12-4-71



LEGEND

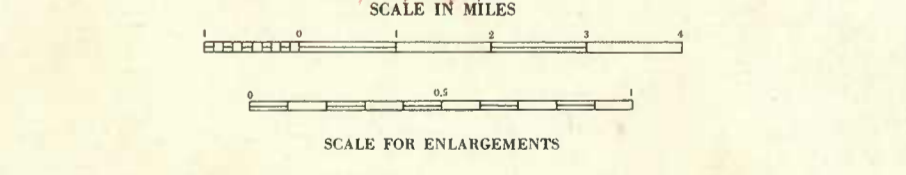
BOUNDARY LINES AND SCREENS	FARM UNITS, DWELLINGS, ETC.
STATE LINE WITH BOUNDARY MARKER	FARM UNIT
COUNTY LINE WITH BOUNDARY MARKER	DWELLING - OTHER THAN FARM
UNINCORPORATED URBAN COMPACT	COMBINED DWELLING AND SCHOOL OR OTHER BUILDING
UNINCORPORATED CITY OR VILLAGE	TENANT HOUSE
ENLARGED DISTRICT	SEASONAL OR SUMMER DWELLING
INCORPORATED CITY OR VILLAGE	CHURCH OR OTHER RELIGIOUS INSTITUTION
NATIONAL RESERVATION	COUNTRY
STATE RESERVATION	CAMP MEETING GROUND
MUNICIPAL RESERVATION	FRESH AIR FARM OR REST HOME
OTHER RESERVATIONS	HOSPITAL
SMALL MONUMENT OR HISTORIC SITE	
	INDUSTRIAL
CITY AND VILLAGE CENTERS	STORE OR SMALL BUSINESS ESTABLISHMENT
STATE OR NATIONAL CAPITAL	FACTORY OR INDUSTRIAL PLANT
COUNTY SEAT	SEASONAL INDUSTRY - CANNERY OR GRAIN MILL
OTHER CITIES AND VILLAGES	FULL OR PARTIAL PACKING HOUSE
	GRAVEL PIT
ROADS AND ROADWAY FEATURES	WAREHOUSE - GENERAL
TRAIL - DRIVING OR PACK	WAREHOUSE - SPECIAL
PRIVATE ROAD	SAW MILL - STATIONARY
UNIMPROVED EARTH ROAD	WATER POWERED MILL
GRAVEL AND GRAVEL ROAD	WATER SHED OR DRY
ROAD SURFACE ROAD	GROUP OF STORAGE TANKS - OIL OR GAS
PAVED ROAD	CAUSING OR PUMPING STATION - GENERAL
DIVIDED HIGHWAY	KILN OR OVEN
PROJECTED ROAD	GREENHOUSE
U.S. NUMBERED HIGHWAY	MUSEUM
STATE NUMBERED HIGHWAY	
FEDERAL AID PRIMARY HIGHWAY SYSTEM	EDUCATIONAL AND OBSTRUCTIONAL INSTITUTIONS
FEDERAL AID SECONDARY HIGHWAY SYSTEM	PUBLIC SCHOOL
TRAFFIC CIRCLE OR HIGHWAY SYSTEM	OTHER EDUCATIONAL INSTITUTION
TRAFFIC INTERCHANGE	PUBLIC LIBRARY
VILLAGE BETWEEN ARROWS	TOWN HALL GARAGE OR COMMUNITY HALL
ROAD PAVEMENT OR PAVED	CORRECTIONAL INSTITUTION
	COUNTY FARM
RAILROADS	
STANDARD - ANY NUMBER OF TRACKS	CONSERVATION AND RECREATION
ELECTRIC INTERURBAN	PICNIC GROUND OR PAVED PICNIC SITE
STATION OR STOP	DRIVE ON PLAYERS
CROSSING AT GRADE	BATHING BEACH OR SWIMMING POOL
UNDERPASS - ROAD BELOW	CAMP GROUND - SITE ONLY
OVERPASS - ROAD ABOVE	CAMP OR LODGE
TUNNEL	FOURTH COURT
	FOREST RANGE STATION
NAVIGATION AND DRAINAGE	FISH HATCHERY
RAIL FERRY	BIRD SANCTUARY
TOLL FERRY	GAME FARM
CANAL WITH LOCK	GAME PRESERVE
NATURAL LOCK	PROMINENT PEAK AND LOOKOUT TOWER
LIGHTHOUSE	STATE PARK
HIGHWAY BRIDGE - SPAN 20' OR MORE	BOAT CLUB
DRAWBRIDGE	AMPHITHEATRE
COVERED BRIDGE	YACHT CLUB
RIVER AND STREAM	FAIR GROUND - RACE COURSE - CIRCUS RING ACADEMY
INTERMITTENT STREAM	
DRAINAGE DITCH	PUBLIC SERVICE FACILITIES
RESERVOIR, POND OR LAKE	POST OFFICE
FORD	POST OFFICE AND DWELLING
FRESH WATER MARSH	POST OFFICE AND BUSINESS
SALT WATER MARSH	COURTHOUSE
GAM WITH ROAD	WATER SUPPLY STANDPIPE
OVERFLOW LAND OR MAXIMUM FLOOD AREA	POWER PLANT
	POWER SUBSTATION
AIRWAYS	TRANSMISSION LINE WITH TRANSFORMER STATION
MILITARY FIELD	RADIO STATION
COMMERCIAL OR MUNICIPAL AIRPORT	HIGHWAY GARAGE
COMPLET FACILITIES	STATE GARAGE
AIRFIELD - LIMITED FACILITIES	MUNICIPAL GARAGE
PRIVATE AIRFIELD, LANDING AREA OR STRIP	STATE POLICE SUBSTATION
AIRWAY LIGHT BEACON	COUNTY POLICE STATION
SEAPLANE BASE	FIRE ENGINE HOUSE
AVIATION	
MISCELLANEOUS MAP FEATURES	
FOUNTAIN	
MONUMENTAL CONTROL STATION	
TOLL HOUSE	
ARMORY	

G.W.C. 4/13/59 SEE MAP FILED IN A.A.CO.
MD 650 - G.W.C. - Note 5/18/59 - IN MONT. CO.

GENERAL HIGHWAY MAP MONTGOMERY COUNTY MARYLAND

TRANS. MD 922 TO COUNTY MIN 6-20-74
US 29 - G.W.C. - 4/13/59 - To Be Posted Upon Completion
SEE MAP G.W.C. 4/13/59 PREPARED BY THE
MARYLAND STATE ROADS COMMISSION

TRAFFIC DIVISION
IN COOPERATION WITH THE
U.S. DEPARTMENT OF COMMERCE
BUREAU OF PUBLIC ROADS
DATA OBTAINED FROM
STATE-WIDE HIGHWAY PLANNING SURVEY
Not Posted - G.W.C. 5/18/59



1950
LAMBERT CONFORMAL CONIC PROJECTION
Denotes State Roads Not Posted
In Field From 10/18/59 Forward
Filed In Front of Min. Books No. 1

Was Held & Now
Capital Beltway
Min 2/1/60

