

Md 94 - Letter 1/24/56
Md 97 - Letter 1/14/56
Md 537 - Letter 1/24/56
Md 97 - Letter 1/24/56

Co. 716 - Effective 2/24/56 - See Letter 1/14/56
Transfer State To Co. - Contingent Upon Imp. Min. 12/13/55 - Effective 7/1/56
See Letter 10/13/54
See Letter 12/14/56

Transfers - Co. To State
Min. 12/12/55 - Effective 7/1/56

U.S. 29 - Letter 1/9/50

At U.S. 29 - Letter 1/9/50
No Post ad.

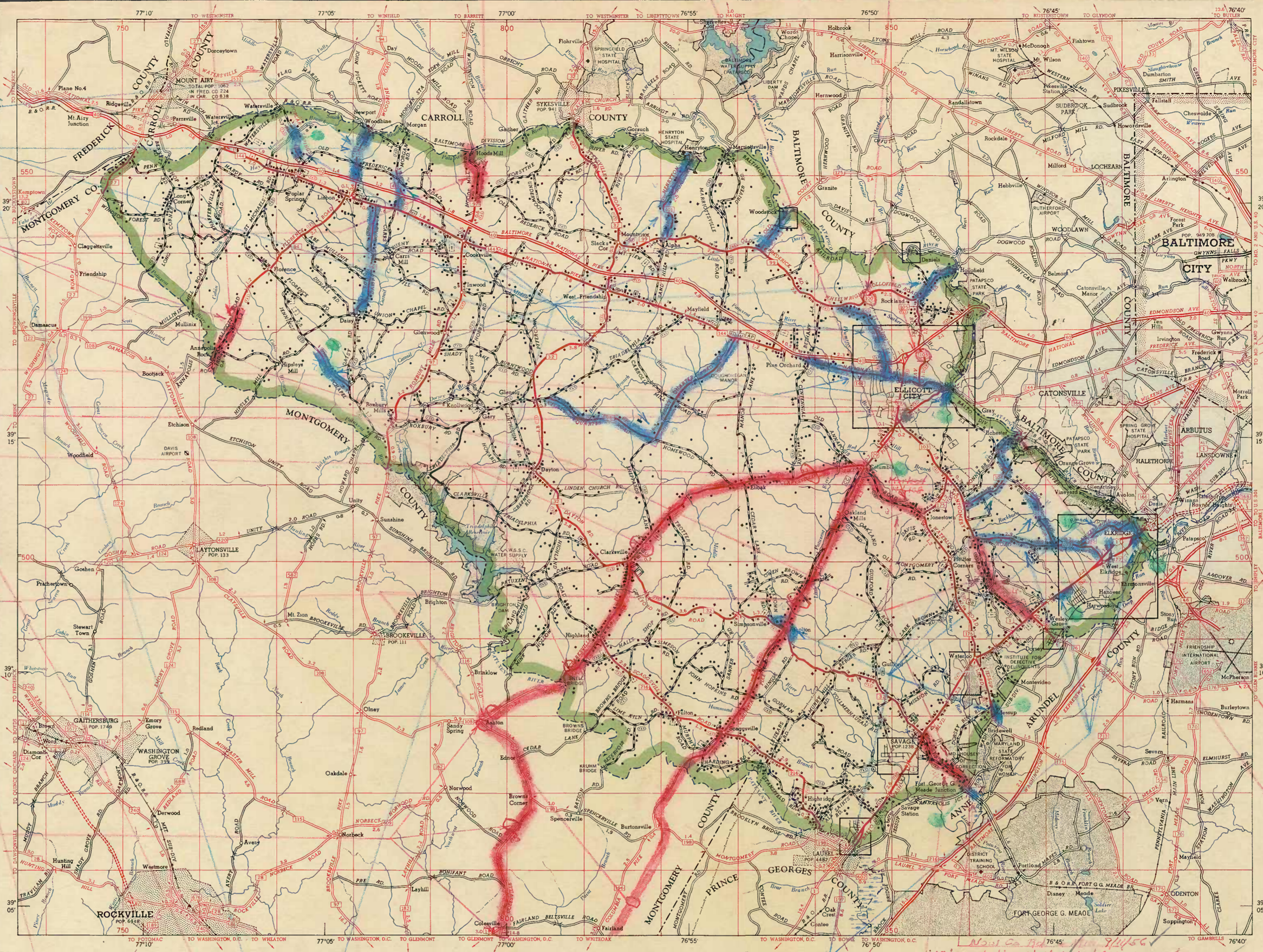
To Be Md. 108 - Letter 2/28/51
To Be Alt. U.S. 29 Upon Completion of Temp. 17c from Columbia to Whiteoak
See ASHO Letter 11/22/54
Md. 108 - GNL + GWC - 4/13/59

To Be U.S. 29 When Completed - Letter 2/28/51
Will Not Be Marked Until It Goes to Whiteoak
See ASHO Letter 12/28/54 Opening
US 29 - GNL + GWC - 4/13/59

To Be Md. 116 - Letter 2/22/51
To Be Alt. U.S. 29 Upon Completion of Temp. 17c from Columbia to Whiteoak
See ASHO Letter 11/22/54
Md. 116 - GNL + GWC - 4/13/59
M.D. 650 5-12-59

Transfers - State To Co.
Min. 12/13/55 - Effective 7/1/56

Md. 99 - Letter 1/24/56



LEGEND	
BOUNDARY LINES AND SCREENS	FARM UNITS, DWELLINGS, ETC.
STATE LINE WITH BOUNDARY MARKER	FARM UNIT
COUNTY LINE	DWELLING - OTHER THAN FARM
UNINCORPORATED URBAN COMPACT	COMBINED DWELLING AND STORE OR OTHER SMALL BUSINESS
INCORPORATED CITY OR VILLAGE	SEASONAL OR SHAMING DWELLING
NATIONAL RESERVATION	HOTEL
STATE RESERVATION	CHURCH OR OTHER RELIGIOUS INSTITUTION
MUNICIPAL RESERVATION	CAMP MEETING GROUND
OTHER RESERVATIONS	FRESH AIR FARM OR BEST HOME
SMALL MONUMENT OR HISTORIC SITE	HOSPITAL
CITY AND VILLAGE CENTERS	INDUSTRIAL
STATE OR NATIONAL CAPITAL	STORE OR SMALL BUSINESS ESTABLISHMENT
COUNTY SEAT	FACTORY OR INDUSTRIAL PLANT
OTHER CITIES AND VILLAGES	SEASONAL INDUSTRY - CANNERY OR GRAIN MILL
ROADS AND HIGHWAY FEATURES	FRUIT OR PRODUCE PACKING HOUSE
UNIMPROVED ROAD	GRAVEL PIT
PRIMITIVE ROAD	WAREHOUSE - GENERAL
UNIMPROVED EARTH ROAD	SANITARY - STATIONARY
GRAVEL OR GRAVEL ROAD	WATER POWER WALL
SOL SURFACED ROAD	WINE - SHUT OR DRIFT
GRAVEL OR STONE ROAD	GROUP OF STORAGE TANKS - OIL OR GAS
BITUMINOUS SURFACE ROAD	CAULDRON OR PUMPS STATION - GENERAL
PAVED ROAD	KILN OR OTHER
DIVIDE HIGHWAY	GREENHOUSE
PREDICTED ROAD	WIREWAY
U.S. NUMBERED HIGHWAY	EDUCATIONAL AND RECREATION
STATE NUMBERED HIGHWAY	PUBLIC SCHOOL
FEDERAL AID PRIMARY HIGHWAY SYSTEM	OTHER EDUCATIONAL INSTITUTION
FEDERAL AID SECONDARY HIGHWAY SYSTEM	PUBLIC LIBRARY
FEDERAL AID URBAN HIGHWAY SYSTEM	TOWN HALL, GRANGE OR COMMUNITY HALL
TRAFFIC INTERCHANGE	CORRECTIONAL INSTITUTION
MILEAGE BETWEEN ARROWS	COUNTY FARM
ROAD PASSAGE RESTRICTED	CONSERVATION AND RECREATION
RAILROADS	PICNIC GROUND OR ROADSIDE PICNIC SITE
STANDARD - ANY NUMBER OF TRACKS	ELECTRIC INTERURBAN
ELECTRIC INTERURBAN	STATION OR STOP
CROSSING AT GRADE	CROSSING AT GRADE
UNDERPASS - ROAD BELOW	CAMP GROUND - STATE ONLY
OVERPASS - ROAD ABOVE	CAMP OR LODGE
TUNNEL	TOURIST COURT
NAVIGATION AND DRAINAGE	FOREST Ranger STATION
FE- FREE FERRY	BIRD SANCTUARY
RAILROAD FERRY	GAME FARM
CANAL WITH LOCK	GAME PRESERVE
NATURAL LIGHT	PROMINENT PEAK AND LOOKOUT TOWER
LIGHTHOUSE	AMUSEMENT PARK
HIGHWAY BRIDGE - SPAN 20' OR MORE	COUNTY PARK
STATION OR STOP	MUNICIPAL CLUB
COVERED BRIDGE	GOLF COURSE
RIVERS AND STREAMS	YACHT CLUB
INTERMITTENT STREAM	FAIR GROUND - RACE COURSE - SPEEDWAY
DRAINAGE DITCH	RACING ACADemy
RESERVOIR, POND OR LAKE	PUBLIC SERVICE FACILITIES
POD	POST OFFICE
FRESH WATER MARSH	POST OFFICE AND DWELLING
SALT WATER MARSH	POST OFFICE AND BUSINESS
DAM WITH ROAD	COURTHOUSE
OVERFLOW LAND OR MAXIMUM FLOOD AREA	WATER SUPPLY STATION
MISCELLANEOUS MAP FEATURES	POWER PLANT
MILITARY FIELD	TRANSMISSION LINE WITH TRANSFORMER STATION
COMBINATION OF MILITARY AIRPORT	RADIO STATION
COMPLETE FACILITIES	STATE POLICE STATION
AIRFIELD - LIMITED FACILITIES	COUNTY POLICE STATION
PRIVATE AIRFIELD, LANDING AREA OR STRIP	FIRE ENGINE HOUSE
AIRWAY LIGHT BEACON	SEWAGE DISPOSAL PLANT
SEAPLANE BASE - MILITARY	FILTRATION PLANT
CIVIL	
MISCELLANEOUS MAP FEATURES	
PORT	
HORIZONTAL CONTROL STATION	
TOLL HOUSE	
	NOTE - ALL VACANT CULTURE INDICATED BY OPEN SYMBOL.

GENERAL HIGHWAY MAP
Md. 94 - Letter 1/24/56 - Not Marked In Field
HOWARD COUNTY
State Bridges - Minutes 8/7/53
MARYLAND

PREPARED BY THE
MARYLAND STATE ROADS COMMISSION
 TRAFFIC DIVISION
 IN COOPERATION WITH THE
U.S. DEPARTMENT OF COMMERCE
 BUREAU OF PUBLIC ROADS

DATA OBTAINED FROM
STATE-WIDE HIGHWAY PLANNING SURVEY

