

January/February 1989

# Directions



Maryland Department of Transportation



5



8



15



23



27



### About the Cover

Nelson Taylor's artwork shows the diversity of transportation life within MDOT and its administrations. The cover reflects, in general, the everyday happenings that the following pages offer pictorially in 1988—THE YEAR IN REVIEW.

### Staff

Editor: James P. Lang, 859-7305

Director of Public Affairs: Hannah Romney-Whitney, 859-7300  
 Deputy Director of Public Affairs: Frank B. Fulton, Jr., 859-7306  
 Chief, Graphics Unit: Nelson Taylor, 859-7304  
 Layout: Charles S. Jones, 859-7308  
 Photographer: Dan Breitenbach, 859-7303

### Contributing Editors

Maryland Port Administration (MPA): Ellen Beth Levitt, 333-4552  
 Maryland Transportation Authority (MdTA): Tom Freburger, 563-7104  
 Mass Transit Administration (MTA): Kathy Kohls, 333-3340  
 Motor Vehicle Administration (MVA): Ed Seidel, 768-7386  
 State Aviation Administration (SAA): Mary Hope, 859-7727  
 State Highway Administration (SHA): Diane Levero, 333-1122  
 State Railroad Administration (SRA): Bill McCaffrey, 282-9636  
 Department Headquarters: John Healy, 859-7786

William Donald Schaefer  
 Governor

Richard H. Trainor  
 Secretary

# FROM THE TOP

by William Donald Schaefer—Governor



I am submitting a bill to this year's legislature to help our police officers deal more effectively with drunk drivers on Maryland roads. This bill, "Administrative Per Se," will beef-up our current law and allow police officers to confiscate drunk drivers' licenses and issue temporary ones, good for only 45 days.

The new bill will help us identify these dangerous drivers and take positive action quickly. With this bill, drunk drivers have no right to a postponement of the hearing, and they have none of the exemptions available under the current law. If drivers refuse to take a blood-alcohol test, they will automatically lose their license for one year. If they take the test and the level is .10 or higher, they would lose their license for a minimum of 120 days for the first offense.

Administrative Per Se is one of the most effective programs across the country that deters drunk driving. In some states, arrests

have dropped 25 percent under the new program because driving drunk could mean losing a driver's license.

Under the current system in Maryland and in many other states, driver-licensing issues are not addressed until after a court conviction. Sometimes these trials are not scheduled for several months after the arrest. In a great many cases, drivers are given probation and never face losing their license. The new law will in no way interfere with a criminal prosecution.

This new bill is far-reaching. An out-of-state driver could lose his driving privileges in Maryland. The Motor Vehicle Administration would also notify his home state.

Driving is a privilege in Maryland. If people abuse this privilege and jeopardize the lives of everyone else on the road by drinking and driving, then they must be accountable for their actions.

# SECRETARY'S MESSAGE

by Richard H. Trainor—Secretary of Transportation



I hope the new year has begun happily for you and your family.

This special issue of *Directions* is a summary of MDOT happenings in 1988 and the successes made possible by your efforts and dedication to your job in the department.

I would like to begin the new year by telling you about a new program in MDOT that a number of you may be helping us test and refine for the transportation industry. It is called the Commercial Driver's License Program, and its aim, largely, is the enhancement of highway safety. We will be using our own drivers to iron the wrinkles out of, what we feel will be, a model program for the industry. There are hundreds of heavy vehicle operators - such as SHA truck and MTA bus drivers - who will be included in our testing.

Once that is completed, we will contact a top-flight commercial firm like Giant Food, Preston Trucking or UPS to further test the program.

In order to comply with stricter federal safety standards, we will be introducing new

state legislation this year to establish a professional licensing program. The program will affect Maryland's 150,000 commercial vehicle operators driving rigs over 26,000 pounds. Some of the provisions of the new program include:

- All drivers' licenses will conform to nationwide, uniform standards.
- Drivers will take a new written test in order to be relicensed.
- Drivers with bad records will have to take new skills tests.
- There will be mandatory suspensions of driving privileges for serious moving violations.

Maryland has a commitment to continue the services it provides through the state's transportation network. Safe and efficient commercial vehicles and drivers make a difference to our citizens. In the past you have shown them that their state government is responsive.

I know that I can count on your support for safer roadways and your continued professionalism in 1989.



# January



photo by Tom Freburger

## **4th MdTA**

*The Maryland Toll Facilities Police begins an extensive truck safety inspection program at three of its facilities. Here, Officer Cheryl Jordan inspects the front leaf springs of a tractor. The program is to be expanded to the authority's other facilities over a one-and-a-half year period. Nearly 40 percent of all trucks inspected were taken off the road immediately because of mechanical or driver deficiencies.*



## **15th MPA**

*Maryland Port Administration's (MPA) David Wagner announces that he will assume the title of executive director, a position in which he will concentrate on developing new business, long range planning and major policy issues. In November 1988 Mr. Wagner resigns from the port.*



**21st SAA**

*Warner Brothers transforms the front of the State Aviation Administration's (SAA) BWI passenger terminal building into a Hollywood set with rain! It was a long, cold night beginning at 4:00 p.m. and continuing until 6:00 a.m. Anne Tyler's **The Accidental Tourist**, with William Hurt and Kathleen Turner, is being filmed. Although the BWI scenes end up on the cutting room floor, the theatrical event will long be remembered.*



photo by John Hammond

**26th SHA**

*As Equal Opportunity section chief, Angela Hawkins, and Administrator Hal Kassoff look on, an exuberant Daniel Hart accepts congratulations on his completion of a State Highway Administration (SHA)-sponsored course for Minority Business Enterprise (MBE) contractors. The course is part of a major revamping of MDOT's MBE program, in which SHA took the lead.*

# February



photos by Dan Breitenbach

## **1st MVA**

*Motor Vehicle Administrator (MVA) W. Marshall Rickert (front right), Comptroller Louls Goldstein (third from left), Rev. Christlne Peterson (second from left) and various dignitaries prepare to cut the ribbon at the customer service center opening in Cumberland.*



### **SAA**

*BWI Airport shows major growth with passenger traffic up 12.5 percent over February 1987. A total of 698,342 people used the airport, the largest monthly increase in 15 months. Excellent load factors on many airlines contribute to the increase.*



### **12th MDOT Headquarters**

*Former MDOT Secretary Hermann K. Intemann dies of heart failure. He was 79 and served as the state's transportation chief from June 1977 to January 1979.*



photo by Bill Kinsley

### **22nd SHA**

*Officials break ground for an \$11 million interchange at MD 543 and I-95 in Harford County.*



# March



## 1st SAA

*Piedmont Airlines added a second nonstop widebody flight to Los Angeles and began nonstop 767 widebody service to Orlando.*

## 7th MDOT Headquarters

*Plans are initiated for Maryland state employees to take their best shot for "Maryland's Pride at Work," the first annual photo contest exclusively for state workers.*



photo by Dan Breitenbach



### **13th MDOT Headquarters**

*Without discussion or dissent, a House committee voted to tighten drunk driving laws by reducing the level of alcohol required for criminal convictions in Maryland. The bill lowers the standard for driving while intoxicated from .13 percent to .10 percent. The level for conviction of driving while under the influence of alcohol is lowered from .08 to .07.*



photo by Bill Kinsley

### **21st SHA**

*Governor Schaefer leads the countdown for ground breaking at the MD18 relocation and overpass of US 50/301 on Kent Island, Queen Anne's County.*

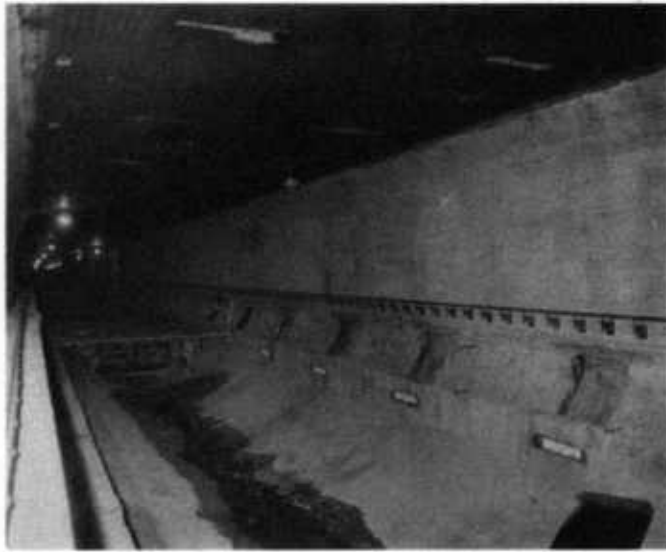


photo by Tom Freburger

## 1st MdTA

The refurbished northbound tube of the Baltimore Harbor Tunnel opens. The tube, shown here earlier as the roadway was being replaced, was closed for nearly a year as workers replaced wall and ceiling tiles, installed new lighting and electrical systems and replaced the roadway. Two-way traffic operated in the southbound tube during the renovations. The southbound tube is currently undergoing the same work. The \$36 million facelift of the 31-year-old tunnel also includes complete renovation of the toll plaza, installation of a computerized toll collection system and resurfacing of sections of the tunnel thruway and ramps.



photo by Dan Breitenbach

## 7th SAA

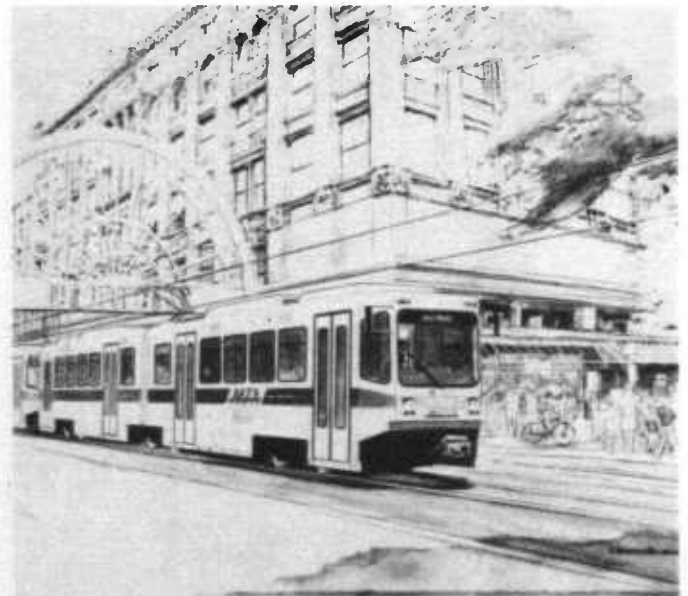
Governor Schaefer opens ceremonies of the "Maryland With Pride" display at BWI. The campaign's purpose is to identify products that are manufactured, grown or processed in Maryland. The showcase exemplifies cooperation between private industry and state government.



photo by Owen Schweers

## 7th SHA

Unveiling the first of a series of logo signs designed to help motorists identify the Capital Beltway route more easily are (from left) Virginia Transportation Commissioner Ray Pettei; Jerry Sachs, Maryland Vice Chairman of the DO-IT Coalition; and SHA Administrator Hal Kassoff.



## MTA

Mass Transit Administration's (MTA) light rail cars, possibly like this one, will be traveling on the Howard Street transit mall in late 1991, thanks to the Maryland General Assembly's approval of the \$290 million project. The proposed 27-mile line will begin in Baltimore County's Hunt Valley, cut through the center of the city and continue south to Anne Arundel County with a spur to BWI.



photo by Dan Breitenbach

### 18th MVA

Comptroller Goldstein (left) and manager Connie McMullen look on as Delegate Virginia Thomas pays her application fee for a driver license renewal at the MVA Columbia express office opening.



### 28th MPA

The first crane in the port of Baltimore to be named in someone's honor is christened by Hilda Mae Snoops, Maryland's hostess, at the South Locust Point terminal. The Hilda Mae is equipped with a state-of-the-art computer system. It can lift 40 tons and handle up to 40 containers per hour.



### MPA

MPA promotional projects coordinator, Harriett Sagel (center), and Louis J. Loblanco, MPA manager, customer service (right), join J. Phillip Tomlinson, vice president of marketing and sales for Meehan Overseas Terminal, Ltd., at an International Intermodal exposition. The expo, at the Georgia World Congress Center in Atlanta, drew more than 2,500 transportation executives. The MPA booth showed conference participants the advantages of shipping through Maryland's ports. Meehan Overseas Terminal operates the facilities at the port of Cambridge.

# May



photo by Tom Freburger

## 2nd MdTA

*Governor Schaefer holds a press conference at the Bay Bridge to announce improvements in his "Reach the Beach" program. The governor's initiative is aimed at easing the summer seasonal traffic tie-ups for motorists bound for Maryland's Eastern Shore resorts.*



photo by Bill Kinsley

## 11th SHA

*The American Society of Civil Engineers presents SHA with an award for outstanding achievement during the widening and rehabilitation of the Severn River Bridge, one of six bridge design awards SHA receives during 1988.*



photo by Bill Kinsley

## 12th SHA

*Helping to kick off the Scenic Routes program and map at Maryland Tourism Week ceremonies are (from left) SHA's Bob Davison, Heather Yates and Russ Ulrich; Gordon Dailey, vice president of Johnson, Mirmiran & Thompson (JMT); SHA's Charlie Adams; and Bill Fletcher, JMT.*





photo by John Hammond

#### **14th SHA**

*MDOT Deputy Secretary Steve Zentz realizes he's been had when a basketball bounces off the plunger at the dunking booth at SHA's Spring Festival, held to celebrate the agency's 80 years of operations.*



photo by Kathy Kohls

#### **22nd MTA**

*MTA helps the Maryland Transportation Authority with its annual Bay Bridge Walk by lending more than 80 buses to transport thousands of bridge strollers. MTA buses pick up the walkers and runners at four area parking lots and take them across the 4.3-mile Chesapeake Bay to the Eastern Shore so they can walk back.*

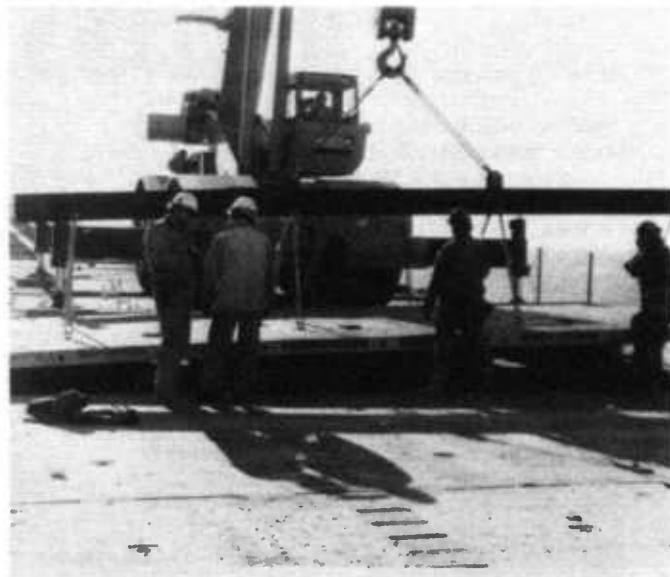


photo by Tom Freburger

#### **23rd MdTA**

*On the day after the annual Bay Bridge Walk, the eastbound span reopens to traffic after a two-year deck rehabilitation project. During the work, the span was closed for the last two winters to allow workers to completely remove the deck and replace it with precast concrete slabs.*

# June



photo by Dan Breitenbach

## 8th MVA

*MVA's Motorcycle Safety Program staff accepts a proclamation from Lt. Governor Melvin Steinberg (with cap) announcing June 12 - 18 as Motorcycle Safety Awareness Week throughout Maryland.*



photo by John Hammond

## 11th SHA

*The completion of the dualization of MD 175 in Howard County, along with the opening of an MTA Park 'n Ride lot, is cause for celebration.*

## 11th SHA

*At the ribbon-cutting for the MD 295/West Nursery Road Interchange are (from left) SHA's Bob Zell, Ed Meehan, Dawn Dukes, John Hunter and Robert Murphy.*



photo by John Hammond



### **13th MPA**

*The USNS Comfort, the Navy's newest hospital ship, arrives at the port of Baltimore for welcoming ceremonies and public tours at the Dundalk Marine Terminal. Baltimore is the ship's home port. The Comfort, a converted tanker, has 12 operating rooms, 1,000 beds and can be fully operational within five days of receiving activation orders for a major emergency or disaster.*



### **25th SRA**

*The State Railroad Administration (SRA) is one of five MDOT administrations contributing to the success of the two-day Maryland International Canoe-Kayak Classic on the Savage River. SRA ran a special MARC commuter train, round trip, from Cumberland, Md. and Oakland, Md. to the site. Over 1,700 people bought tickets to ride the train through the scenic mountains of Garrett and Allegany Counties.*



photos by Frank Fulton



## **6th SAA**

*BWI marks the official opening of the new commuter terminal and the completed Pier D extension. The Ralph M. Parsons Company construction management team supervised the three-phase project which began in May 1987. The expansion project, completed on schedule, adds 160,000 square feet of terminal space, including nine new loading bridges, a commuter terminal with 18 commuter gates and a control tower for Piedmont/U.S. Air. The terminal area also includes several food and beverage facilities, news and gift shops, information centers, passenger lounges and airline offices.*

## **25th SHA**

*SHA Administrator Hai Kassoff signs the award letter for the last of five contracts in the \$163 million program to upgrade US 48 in Western Maryland to freeway status. Watching is deputy chief engineer for Highway Development, Bob Douglass.*







photo by Ed Seidel

### **27th MVA**

*MDOT Secretary Richard H. Trainor presents Rebecca Cody, director of field services for MVA, with the 1988 Affirmative Action award.*

### **30th MTA**

*MTA bus operators and mechanics and Metro operators and attendants compete in four separate "rodeos" to find the transit agency's best. The voluntary competitions test an employee's skills at the wheel and on paper, as well as evaluate his or her appearance in uniform.*



photo by Kathy Kohls

# August



## 1st MPA

The port of Baltimore moves into a new era of private-sector influence when the Maryland Port Commission held its first meeting. Governor Schaefer appointed the commission, which is made up of six distinguished business leaders and chaired by State Secretary of Transportation Richard Trainor. The port commission oversees operations and strengthens the MPA's ties with the business community. Pictured are commissioners Milton Miller, Jerome Geckle and John Waltersdorf. Other members are J. Owen Coie, Thomas T. Koch, Fred L. Wineand and Secretary Trainor.

## 5th MdTA

Governor Schaefer spends nearly an hour collecting tolls in the express lane at the Bay Bridge. He is assisted by toll collector James Jackson (background). During his stint as a collector, the governor processed 425 vehicles, which is not bad for a starting collector. An experienced one will handle at least 500 vehicles an hour in the express lanes.



photo by Dan Breitenbach



photo by Dan Breitenbach

### **12th MdTA**

*The Garvey family of Damascus, Md., are in the 250,000 vehicle to cross the Bay Bridge this past summer during off-peak hours. The "Reach the Beach" milestone was marked as the Garveys pose with Maryland Transportation Authority (MdTA) Chairman Richard H. Trainor (left), who presents them with a number of gifts.*



photo by Ed Seidel

### **15th MVA**

*Anthony Constantino, chief investigator of MVA's Licensing and Consumer Services Division, hosts the annual National Odometer Enforcement Association conference on August 15 - 19 in Baltimore.*

# September



photo by Kathy Kohls

## 6th MTA

*MTA launches a new shuttle bus service for senior citizens in southeast Baltimore. Two buses operate on different weekdays, carrying passengers to senior centers, shopping districts, medical centers and senior housing projects.*



photo by Bill Kinsley

## SHA

*Members of the Centreville Shop's Quality Circle group raise their Quality Circle mugs in a toast. SHA's 50th Quality Circles group was formed by the agency's District 3 Office in Greenbelt, making 50 employee groups working together to improve the quality of life in the work place.*

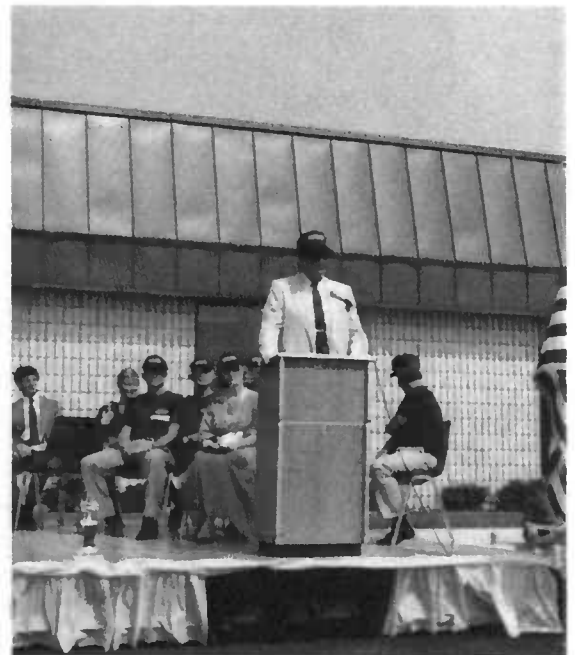


photo by Ed Seidel

## 10th MVA

*Secretary Trainor addresses the audience at MVA's Annapolis branch office opening.*





### 14th SRA

*In celebration of LaPlata, Maryland's 100th anniversary, LaPlata Train Day brought the town's citizens out to observe a MARC train which carried Governor Schaefer and Transportation Secretary Trainor, among other city and state officials.*



### SAA

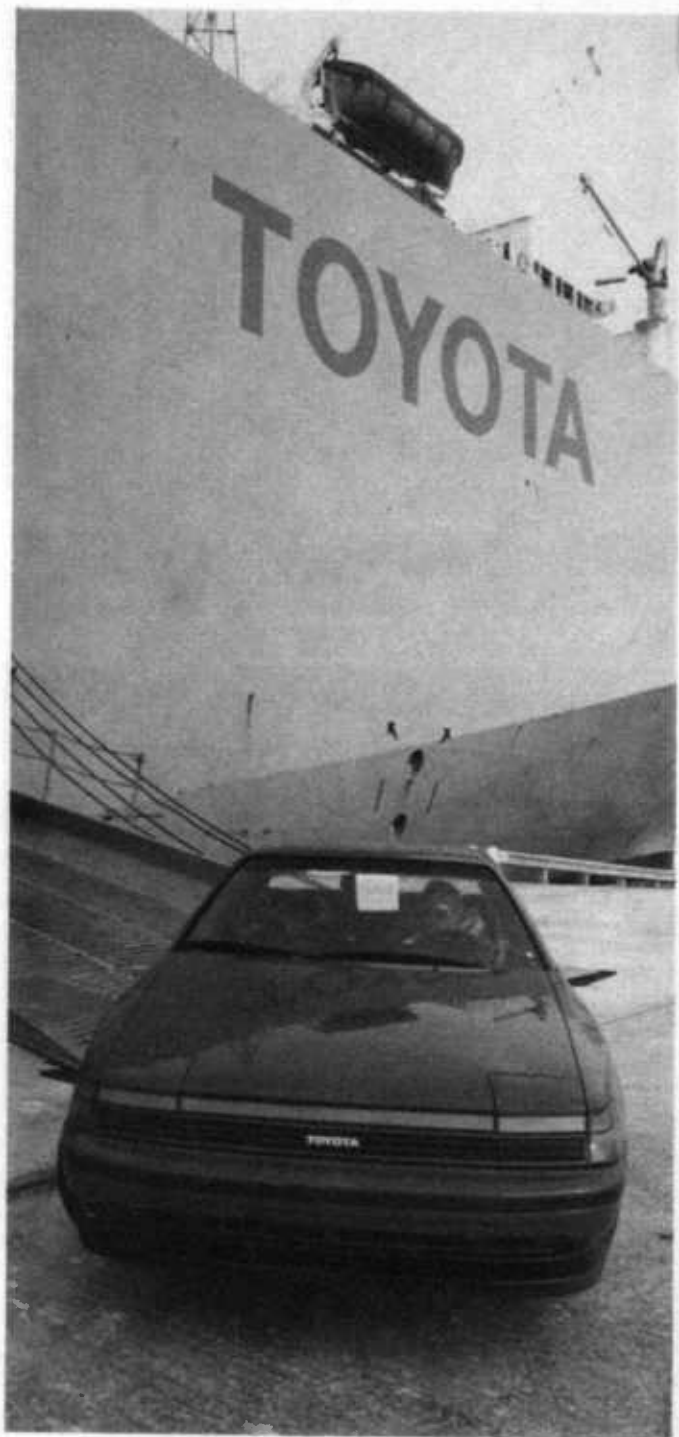
*As part of BWI's Noise Assistance Program, two houses are moved from the Hanover area and relocated elsewhere in Anne Arundel County. For several years, the SAA has been buying homes most affected by noise. Once vacated, two of these houses were donated to South County Residential Projects, Inc. The homes will be sold to low-income families, providing low-cost housing for people who might not otherwise be able to buy. South County is hoping to move more houses in the same way in 1989 in order to recycle the SAA-acquired housing into new homes for needy families*



photo by Tom Freburger

### 22nd MdTA

*The MdTA hosts a ceremony at the Maryland House to mark the 25th anniversary of the opening of the John F. Kennedy Memorial Highway (I-95). William S. James, former state senator and treasurer, was among the guest speakers. MdTA Chairman Richard H. Trainor called Senator James a strong advocate of the construction - and notable overseer of the operation and maintenance - of the highway. Since its opening more than 300 million vehicles have passed through the highway's toll plaza at Perryville.*



## 7th MPA

MPA officially opens a new, 45-acre auto terminal during dedication ceremonies at the port of Baltimore. About 9,000 Toyota vehicles are imported annually through the port.



photo by Dan Breitenbach

## SAA

Nine international thoroughbred race horses arrive at BWI on a specially equipped Anglo Air Cargo charter flight. The horses, representing several European countries, competed in the International Turf Festival at Laurel Race Course.



**8th MPA**

*The USS Harry E. Yarnell receives visitors at the MPA open house at the Dundalk Marine Terminal. The Yarnell is among nine Navy ships and two Coast Guard cutters docked in Maryland for "The Fleet's In...Maryland's Ports." Governor Schaefer welcomed the fleet for the statewide celebration of Maryland's rich maritime tradition. The event drew more than 44,000 visitors to the attractions. It was the largest group of Navy ships in Maryland since World War II.*

**14th MVA**

*The MVA Raisins do their part in kicking off the 1988 United Charities Campaign.*



photo by Ed Seidel

# November



photo by Ed Seidel

## **18th MVA**

*During the State Employees Conference, Lt. Governor Steinberg (left) and Hilda Ford, Secretary of Personnel (center), present MVA Administrator W. Marshall Rickert with the Administrator of the Year award.*



## **MPA**

*An estimated 500 pounds of food donated by MPA employees is distributed to about 80 needy senior citizens. MPA employees sort the groceries into individual packages. Canned goods, cereals, pasta and peanut butter are among the foods donated. Pictured are MPA employees (from left) Jeannie Allen, Sheila Francis, Wayne Magsamen, Gloria Simpson-Jacobs, Charles Bennett and John Hoit.*





### **20th MTA**

*Nearly 600 runners compete in MTA's Great Subway Race, a seven-miler from the Reisterstown Plaza Metro station to the Lexington Market Metro station. The race route follows the original section of the Baltimore Metro, which opened in late 1983.*

photo by Cathy Bowers



photo by Carol T. Riley

### **SAA**

*The BWI Holiday Helper Program, now into its second year, is proving to be an ongoing success and a program deserving of news coverage. Channel 4, a Washington, D.C. television station, is just one of the stations covering the Thanksgiving holiday traffic and Holiday Helper Program. Tony Storck of the Communications Center is being interviewed. He, along with 34 other SAA employees, logged 334.5 hours over a five-day period, rendering 5,211 passenger assists.*

# December



## 1st MPA

A former, longtime MPA employee receives a prestigious honor from the government of Belgium. David K. Tosic (right) is granted the "Knight in the Order of the Crown" at a ceremony at Baltimore's World Trade Center. He is the second Maryland resident to win the award in the last 13 years. The ambassador of Belgium to the United States, Herman Dehennin, presents the award to Mr. Tosic in recognition of his more than 20 years of work representing the MPA in Belgium.



## 3rd MPA

The first two of seven state-of-the-art container cranes for the new, \$250 million Seagirt Marine Terminal arrive at the port of Baltimore from Korea. Their arrival marks a significant milestone in the progress of Seagirt, which is scheduled to open this summer. The all-electric, semi-automatic cranes will make the Seagirt terminal the most modern and efficient container-handling facility on the East Coast.



photo by Bob Ware

## 6th SAA

In keeping with the holiday spirit, BWI holds its sixth annual Christmas tree lighting ceremony in the ticket concourse area of the passenger terminal building. Sixth grade Linthicum Elementary School students decorated the tree with ornaments that they made. Ted Mathison, the SAA administrator, gave a Christmas message, and Santa arrived with gifts for all the students. The students, employees and passengers share in singing carols to celebrate the season and tree lighting.



photo by Don Klein

### 6th SRA

*During a special "no passenger" roundtrip between Washington and Baltimore, reporters take a few minutes to inspect the nearly completed Seabrook station in the Maryland suburbs of the District of Columbia. The inspection includes a background briefing on MARC's new equipment, operations, machinery and future plans.*



photo by Kathy Kohls

### 12th MTA

*Santa Claus drives MTA's annual holiday bus and not his usual sleigh during a two-week goodwill tour of the metropolitan area. Free rides are given on nearly 40 different bus lines as the special coach crisscrosses the city and surrounding areas. The holiday bus is decorated inside and out by members of MTA's body shop.*

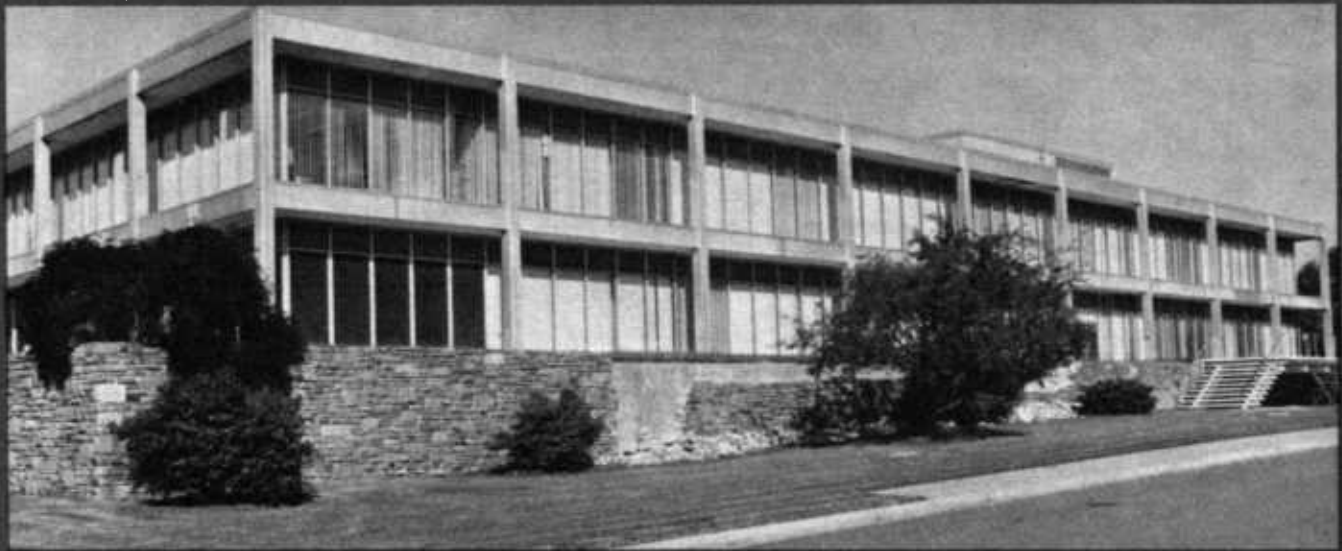


photo by Tom Freburger

### 20th MdTA

*As they have done in past years, members of the MdTA headquarters staff pay a holiday visit to the residents of the Anne Arundel Geriatric Nursing Center. Here, the MdTA Santa (John Ellerman of the central depot) dances with one of the residents during the previous year's visit. The MdTA employees visit the home several times a year to, as one of them said, "bring a few moments of cheer and happiness to the lives of some otherwise lonely people."*





*Pictured above is the MDOT Headquarters building in April 1988. Below is the December 1988 version with a new addition.*



photos by Dan Brillerbach



*Maryland Department  
of Transportation*

P.O. Box 8755  
BWI Airport, MD 21240-0755

Bulk Rate  
U.S. Postage  
Paid  
Baltimore, Md.  
Permit No. 5517