

Public Hearings - Wicomico - Memo From Commission Staff to Wicomico County Panel 1989 NSA_01830-71

CHESAPEAKE BAY CRITICAL AREA COMMISSION
275 West Street, Suite 320
Annapolis, Maryland 21401

August 21, 1989

MEMORANDUM

TO: Wicomico County Panel

Victor Butanis, Chairman/Russel Blake/Shepard Krech/
G. Steele Phillips/William Corkran/William Bostian/
Judge North

FROM: Tom Ventre
Chesapeake Bay Critical Area Commission Staff

SUBJECT: Wicomico County Program

Staff has completed its review of the resubmitted program for Wicomico County. Recommended changes and corrections have been made to the text. However, some mapping issues remain to be discussed and resolved.

A panel meeting with Wicomico County staff is scheduled for ten o'clock Tuesday morning, August 29th, in the meeting room of the Talbot County Library in Easton. A map is attached.

Also attached to this memorandum are site maps for the mapping issues to be discussed at the meeting.

I am out of the office during the week of August 20. If you have any questions or comments on meeting logistics, you may telephone Madeline Larmore at the office (301-974-2426). I return to the office on Monday, August 28th.

I look forward to seeing you in Easton.

THV:msl

Attachments



EASTON

4

Branch

CALVERT TERRACE

Country

ARCADIA

CARROLLS

ADDITION

St. Peter's & Paul's

Idlewild Farm

Idlewild Park

William Hill Manor Retirement Living

MECKLENBURG

MULBERRY HILL

GOLTON

RICE LAND

State Highway Administration

CLIFTON

CLIFTON INDUSTRIAL PARK

Branch

EASTON BUSINESS CENTER

GLENWOOD

THIRD HAVEN HEIGHTS

St. Mark's Church

Glenwood ES

Talbot Co. Vo-Tech Ctr

INDERRY

Easton MS

PENNSFIELD

SOUTH PENNSFIELD

WOODLAND

322

33

322

50

328

331

216

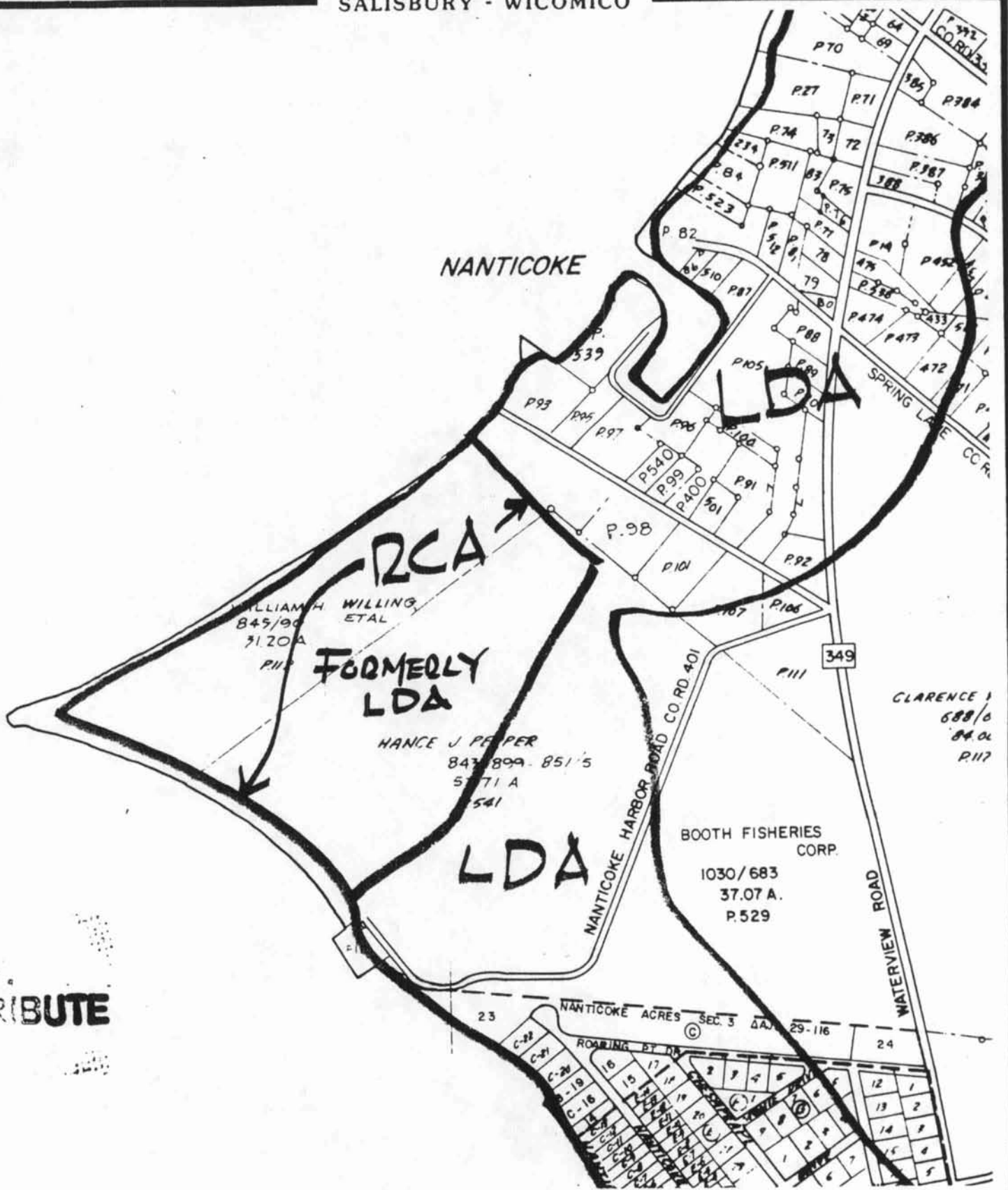
SWANN HAVEN

CHILCUTT

DOVER ACRES

CLIFTON INDUSTRIAL PARK

TALBOT CO. LIBRARY
100 WEST DOVER ST.
EASTON
822-1626
TUES. 8:29 @ 10AM



RIBUTE

Wicomico County
 CBCA Mapping Changes
 State Review

HELEN P. FERGUSON et al
673/531
134.38A.
P.75

ROGER K. STEFFENS
776/11 INC.
20A.
P174

GREEN HILL LAND CO.
309/436
181A.
P.74

GREEN HILL GOLF COURSE

LDA
FORMERLY-
IDA

RCA
FORMERLY LDA

T T D. PHILLIPS, JR.
908/609
P.73

RCA

OUTLOT
21.62 A.

P. 260

E.D.2
27

Wicomico County
CBCA Mapping Changes
State Review

SALISBURY - WICOMICO

MAP 30 - P. 342

MAP 36 - P. 227

MAP 36 - P.

MAP 36 - P. 228

RS
C.
534
51 A.
17

PPERS CO., INC.
426/57
29.00
P. 220

PPERS CO., INC.
551/74
117.29A
P. 80

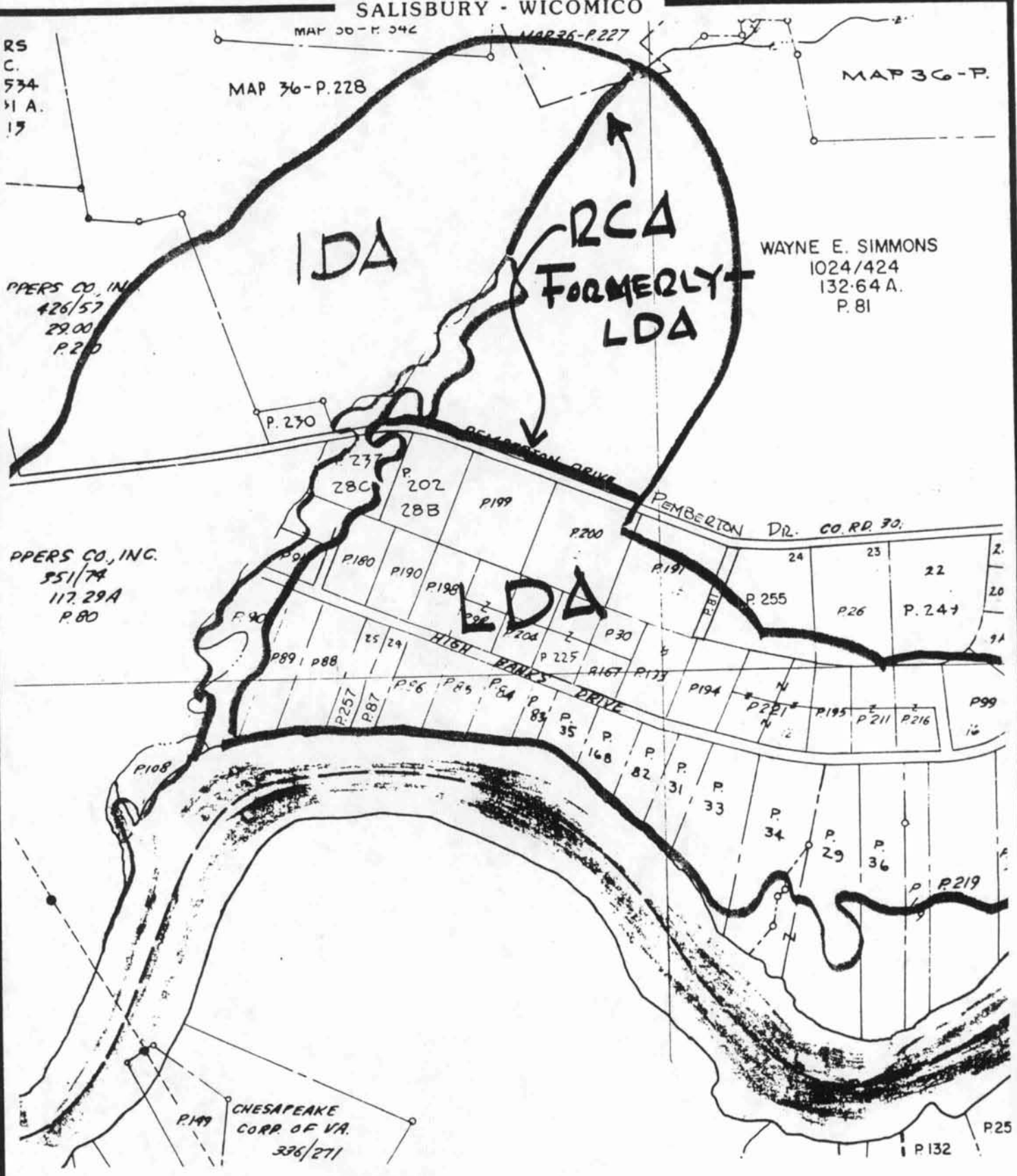
P. 199 CHESAPEAKE
CORP. OF VA.
336/271

WAYNE E. SIMMONS
1024/424
132.64 A.
P. 81

IDA

RCA
FORMERLY
LDA

LDA



Wicomico County
CBCA Mapping Changes
State Review

SALISBURY - WICOMICO

GUY S. ELSEY
343/85
74.94 A.
P. 72

"WEST NITHSDALE"

RCA
FORMERLY LDA
5

LDA

5

E.D.7

UPPER FERRY

SAMUEL H. WILLIAMS
223/162
89.20 A.
P. 121

JOSEPH W. SCHWANDA, ET AL
1028/406
829/600
50.00A.
P. 127

LDA

RCA
FORMERLY LDA
6

JAMES R. SHOCKLEY
415/152
4.50A
P. 119

STANLEY BOUNDS
21.92 A.
P. 135

SAMUEL A. HARTMAN
21.25 A.
P. 120

HARVEY V. BEAUCHAMP, ET AL
1031/318
7.75 A.

SILOAM METHODIST

Wicomico County
CBCA Mapping Changes
State Review

5/6

SALISBURY - WICOMICO

MAP 37-P-948

ROBERTSON
ET AL
1003/296
20.00A.
P.690

ROBERT L. WILLIAMS
915/301
3784A
P.9

BRUCE R. WILLIAMS
919/297
2375A
P.15

THOMAS M. FISHER
888/503
14.70A.
P.16

W. ELLIOTT
BOUR
435/
39

RCA

FORMERLY
LDA

LDA

GEORGE A. BENEDICT,
ET AL
906/314
P.35
P.15

RICHARD L. MARSHALL
1087 / 797
19 33A
P 451

RICHARD L. MARSHALL
651 / 6
78.69A.
P.448

AMERICAN ORIGINAL CORP.
1072 / 752
141.86 A.
P.665

E.D.9
E.D.16

HARRY Q. KOBEE

Wicomico County
CBCA Mapping Changes
State Review

* 9 ?

MAP 56-P.31

OPH M. RECHBERG, ETAL
996/321
250.00A.
P. 3

ALICE M. FISHER
834/387
24.50 A.
P.33

RCA

RCA

Fisher Site

LUTHER E. PAYNE
270 / 557
234.53 A
P. 5

LDA

P 32

NOBLE FARM LANDING SEC 1
DAS 6/93

WINDROWS WAY

SALISBURY - WICOMICO
NANTICOKE
ENTERPRISES, INC. MAP 53-P75
955/250
16.20 A.
P. 20

HOWARD
RENCHER
885/656
18.15A.
P. 1

RONALD T.
FISHER
1038/782
14.49 A.
P. 245

RCA

Zabkowski
Site

LEARY
BUTTON
1089/186
24.2
P. 41

LDA

WILLIAM L. MILLER
639/389
9.90A.
P. 204

RONALD T. FISHER
752/252
15.00A.
P. 288

LEVIN R. HEATH
224/358
12.10A.
P. 43

RCA

RONALD G. FISHER
661/382
19.00A.
P. 340

RONALD T.
FISHER
880/1
15.00A.
P. 280

MICHAEL E.
BUDA
719/111
9.88A
P. 2

RCA

LDA

JESTERVILLE ROAD CO. RD. 334

LDA

FRED BARTLETT
775/557
7.37A
P. 45

DONALD P. FISHER
879/38
16.00A
P. 316

RONALD T. FISHER
680/1
38.00A.
P. 315

P. 358
P. 359
P. 360
P. 361
P. 362
P. 363
P. 364
P. 365
P. 366
P. 367
P. 368
P. 369
P. 370

MADCALE

LANE CO. RD.

P. 305
P. 306
P. 307
P. 308
P. 309
P. 310
P. 311
P. 312
P. 313
P. 314

MAP 5G-P.31

CHRISTOPH M. RECHBERG, ETAL
996/321
250.00A.
P. 3

ALICE M. FISHER
834/387
24.50A.
P.33

RCA

LUTHER E. PAYNE
270 / 557
234.53A
P. 5

Payne Site

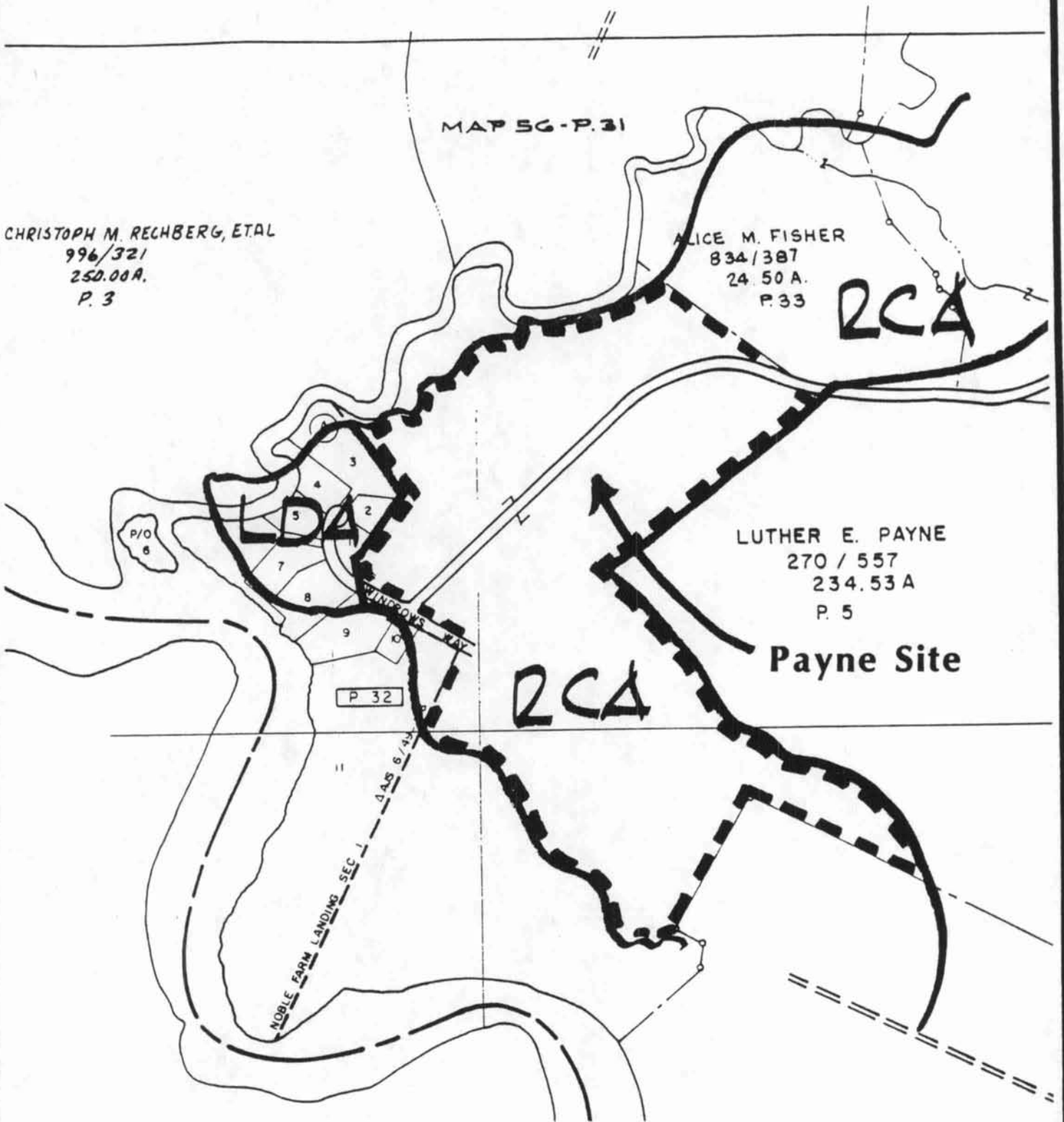
RCA

LDA

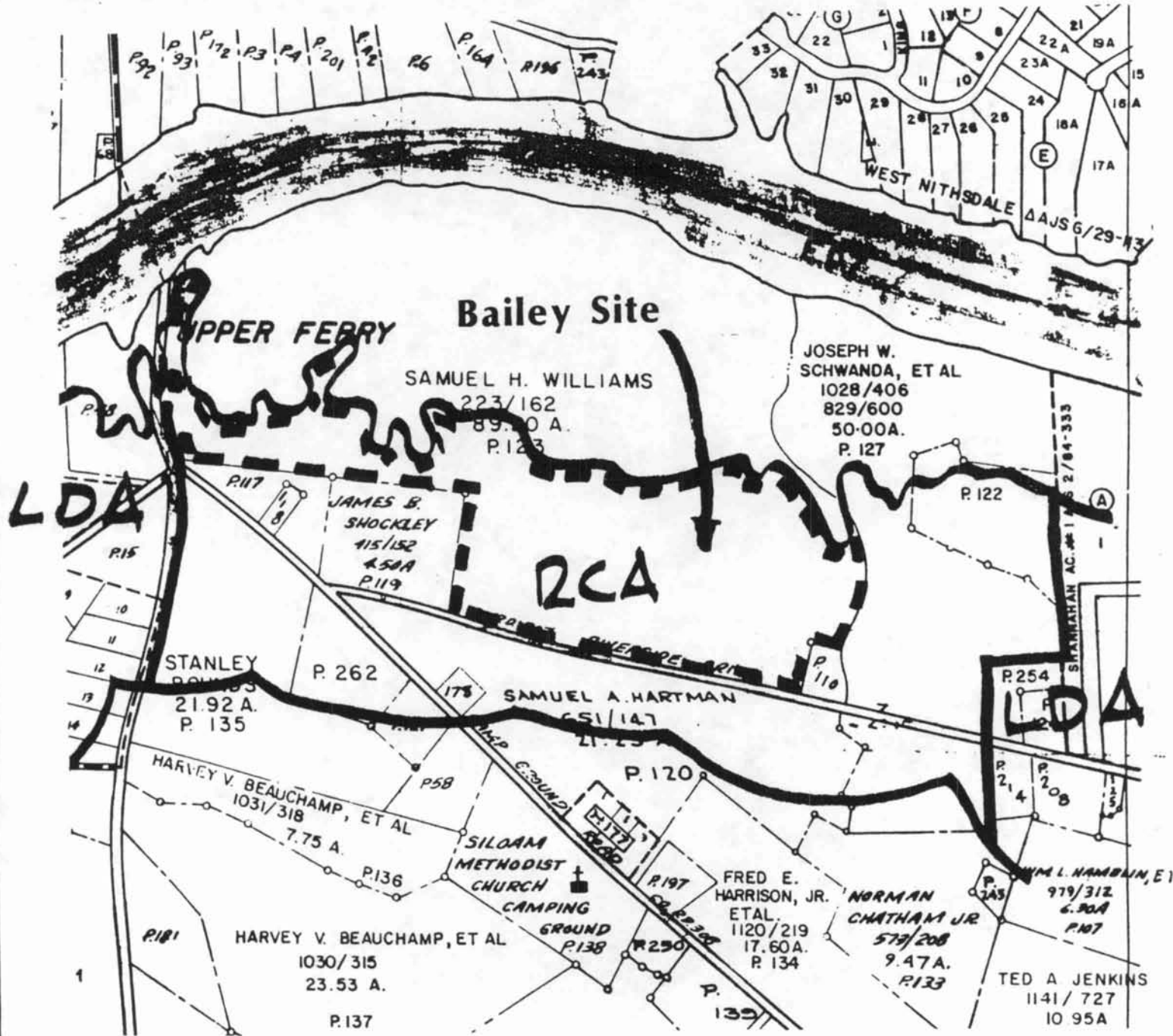
P 32

NOBLE FARM LANDING SEC 1
445 8/33

WINDY HAY



SALISBURY - WICOMICO



TX MAP 46 P.123