



U. T. CARTER, D. D. S.
Providence, R. I.
State Vice President



STEPHEN J. LEWIS, D.D.S.
Washington, D. C.
Dental Editor of N. M. A.
. . . . Journal



ROSCOE C. BROWN, D. D. S.
Chairman
General Health Committee
N. M. A.



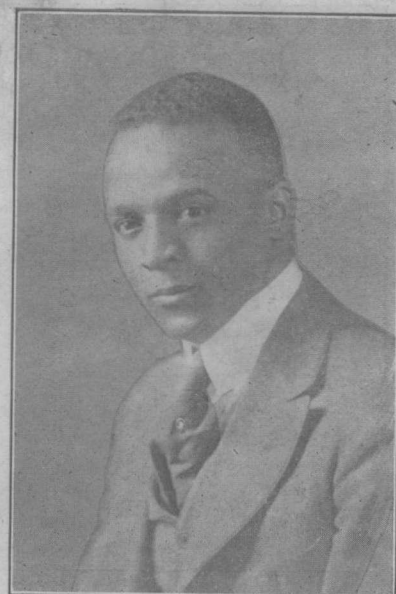
U. S. WHARTON, M. D.
Altoona, Pa.
Member, Ways and Means
Committee



WM. J. THOMPKINS, M. D.
Kansas City, Mo.
State Vice President



J. A. TINSLEY, M. D.
Weldon, N. C.
Member Ex. Board, N. M. A.
State Vice President



G. C. BRANNON, M. D.
Philadelphia, Pa.
Director Zone No. 2, N. M. A.



G. R. DWELLE, M. D.
Atlanta, Ga.



VAL DO TURNER, M. D.
St. Paul, Minn.
State Vice President



A. W. DUMAS, M. D.
Natchez, Miss.
State Vice President and
Associate Editor Journal N.M.A.



