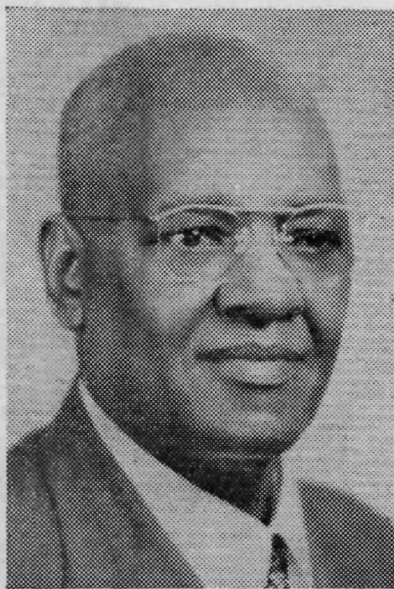
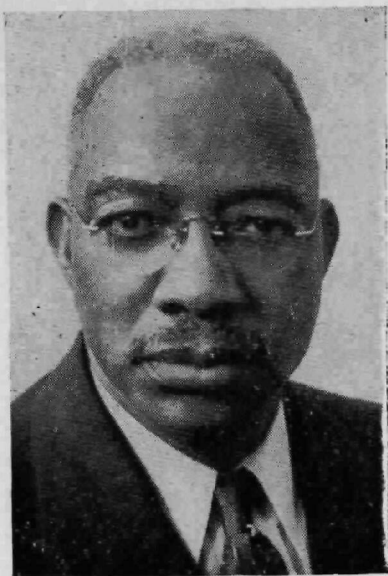


The
National Baptist
Bulletin
1946



Rev. D. V. Jemison, D.D.
President National Baptist
Convention, U.S.A., Inc.



Rev. J. N. Nabrit, D.D.
*Secretary National Baptist
Convention, U.S.A., Inc.*



Rev. A. L. Boone, D.D.
*1st Vice President-at-Large,
National Baptist Convention,
U.S.A., Inc.*

Foreword

The purpose of this book is to present statistical data and information about the National Baptist Convention, U. S. A., Incorporated, and to acquaint our Baptist constituency with facts concerning the Baptist in the United States and the world at large.

The Editor presents for all who read this Bulletin facts and information relative to various Religious Bodies. The survey on Religious Bodies portrays the growth, as well as the trends in Religion today.

There are many factors involved in our Denominational life as Baptists which the Editor is not presenting, for it is impossible, because of our meager resources and limited department staff.

It is the Editor's sincere wish that leaders of the National Baptist Convention, State Conventions, and particularly Secretaries and Moderators of Associations, will aid with their cooperation in this work.

Will all Secretaries of State Conventions and Associations send the Editor the minutes of their annual session? To do this will aid greatly in the accuracy and success of the National Baptist Bulletin.

It is with heartiest sincerity that special appreciation is accorded Mrs. Mary Shepard Dixon, Stenographer; and the Secretaries of Associations and State Conventions, as well as Presidents of State Conventions and Moderators of Associations for varied forms of valuable assistance.

ROLAND SMITH, Editor.



Rev. Thomas S. Harten, D.D.
*Regional Vice-President
National Baptist Convention,
U.S.A., Inc.*



Rev. E. Arlington Wilson, D.D.
*Corresponding Secretary, National
Baptist Convention, U.S.A., Inc.*



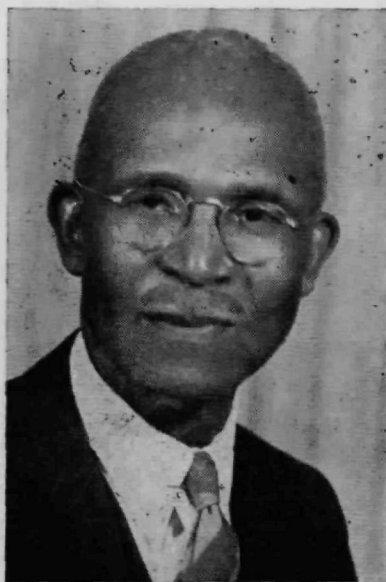
Rev. T. Moore King
*Assistant Secretary, National
Baptist Convention, U.S.A., Inc.*



Dr. A. M. Townsend
*Secretary, Sunday School Publish-
ing Board, National Baptist Con-
vention, U.S.A., Inc.*

National Baptist Convention
HONOR ROLL
of
State Presidents

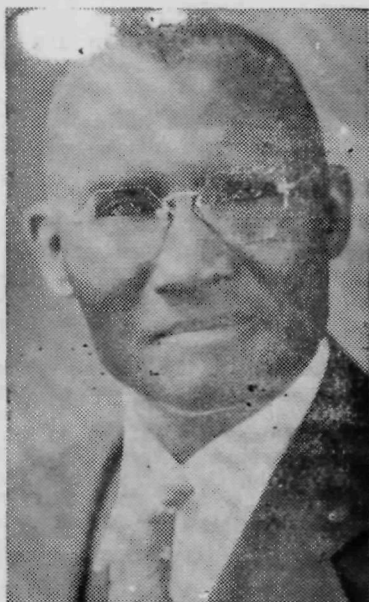
We are very grateful to our leaders of the National Baptist Convention, U. S. A., Inc. These brethren, whose names appear on this roll, have contributed sums ranging from \$50 to \$100 to our statistical department through their State Baptist Conventions. Because of their support and encouragement to our work, their names are carried on this scroll of honor.



Dr. J. W. Hayes
*President, Kansas City State
Baptist Convention
Wichita, Kansas*



Dr. Henry Harrison Humes
*President, General Missionary
Baptist State Convention
Mississippi*



Dr. J. F. Clark

*President of the Consolidated
Baptist State Convention
of Arkansas*



Rev. J. L. Horace, D.D.

*President, Baptist General State
Convention of Illinois*

CITIES IN WHICH THE SESSIONS OF THE NATIONAL BAPTIST CONVENTION HAVE BEEN HELD FROM ITS ORGANIZATION IN 1880 TO THE PRESENT

YEARS	CITIES	PRESIDENTS	SECRETARIES
1880	Montgomery, Ala.	Rev. W. H. McAlphine	Rev. J. M. Armistead
1881	Knoxville, Tenn.	Rev. W. H. McAlphine	Rev. J. M. Armistead
1882	Macon, Ga.	Rev. W. H. McAlphine	Rev. W. R. Petiford
1883	Manchester, Va.	Rev. J. Q. Wilhite	Prof. J. E. Jones
1884	Meridian, Miss.	Rev. J. A. Foster	Rev. H. H. Mitchell
1885	New Orleans, La.	Rev. W. A. Brinkley	Rev. S.T. Clanton, B.D.
1886*	St. Louis, Mo.	Rev. W. J. Simmons, D.D.	Rev. S.T. Clanton, B.D.
1887	Mobile, Ala.	Rev. W. J. Simmons, D.D.	Rev. S.T. Clanton, B.D.
1888	Nashville, Tenn.	Rev. W. J. Simmons, D.D.	Rev. J. L. Cohran
1889	Indianapolis, Ind.	Rev. W. J. Simmons, D.D.	Rev. J. L. Cohran
1890	Louisville, Ky.	Rev. W. J. Simmons, D.D.	Rev. J. L. Cohran
1891	Dallas, Texas	Rev. E. M. Brawley, D.D.	W. H. Steward
1892	Savannah, Ga.	Rev. M. Vann	W. H. Steward
1893	Washington, D.C.	Rev. M. Vann	W. H. Steward
1894	Montgomery, Ala.	Rev. E. C. Morris, D.D.	W. H. Steward
1895	Atlanta, Ga.	Rev. E. C. Morris, D.D.	W. H. Steward
1896	St. Louis, Mo.	Rev. E. C. Morris, D.D.	W. H. Steward
1897	Boston, Mass.	Rev. E. C. Morris, D.D.	W. H. Steward
1898	Kansas City, Mo.	Rev. E. C. Morris, D.D.	W. H. Steward
1899	Nashville, Tenn.	Rev. E. C. Morris, D.D.	Prof. W. L. Cansler
1900	Richmond, Va.	Rev. E. C. Morris, D.D.	Prof. W. L. Cansler
1901	Cincinnati, Ohio	Rev. E. C. Morris, D.D.	Prof. W. L. Cansler
1902	Birmingham, Ala.	Rev. E. C. Morris, D.D.	Prof. W. L. Cansler
1903	Philadelphia, Pa.	Rev. E. C. Morris, D.D.	Prof. W. L. Cansler
1904	Austin, Texas	Rev. E. C. Morris, D.D.	Prof. W. L. Cansler
1905	Chicago, Ill.	Rev. E. C. Morris, D.D.	Prof. W. L. Cansler
1906	Memphis, Tenn.	Rev. E. C. Morris, D.D.	Prof. W. L. Cansler
1907	Washington, D.C.	Rev. E. C. Morris, D.D.	Prof. W. L. Cansler
1908	Lexington, Ky.	Rev. E. C. Morris, D.D.	Prof. R. B. Hudson
1909	Columbus, Ohio	Rev. E. C. Morris, D.D.	Prof. R. B. Hudson
1910	New Orleans, La.	Rev. E. C. Morris, D.D.	Prof. R. B. Hudson
1911	Pittsburgh, Pa.	Rev. E. C. Morris, D.D.	Prof. R. B. Hudson
1912	Houston, Texas	Rev. E. C. Morris, D.D.	Prof. R. B. Hudson
1913	Nashville, Tenn.	Rev. E. C. Morris, D.D.	Prof. R. B. Hudson
1914	Philadelphia, Pa.	Rev. E. C. Morris, D.D.	Prof. R. B. Hudson
1915	Chicago, Ill.	Rev. E. C. Morris, D.D.	Prof. R. B. Hudson
1916	Savannah, Ga.	Rev. E. C. Morris, D.D.	Prof. R. B. Hudson
1917	Muscogee, Okla.	Rev. E. C. Morris, D.D.	Prof. R. B. Hudson
1918	St. Louis, Mo.	Rev. E. C. Morris, D.D.	Prof. R. B. Hudson
1919	Newark, N. J.	Rev. E. C. Morris, D.D.	Prof. R. B. Hudson
1920	Indianapolis, Ind.	Rev. E. C. Morris, D.D.	Prof. R. B. Hudson
1921	Chicago, Ill.	Rev. E. C. Morris, D.D.	Prof. R. B. Hudson
1922	St. Louis, Mo.	Rev. W. G. Parks, D.D.	Prof. R. B. Hudson
1923	Los Angeles, Cal.	Rev. L. K. Williams, D.D.	Prof. R. B. Hudson
1924	Nashville, Tenn.	Rev. L. K. Williams, D.D.	Prof. R. B. Hudson
1925	Baltimore, Md.	Rev. L. K. Williams, D.D.	Prof. R. B. Hudson
1926	Ft. Worth, Texas	Rev. L. K. Williams, D.D.	Prof. R. B. Hudson
1927	Detroit, Mich.	Rev. L. K. Williams, D.D.	Prof. R. B. Hudson
1928	Louisville, Ky.	Rev. L. K. Williams, D.D.	Prof. R. B. Hudson
1929	Kansas City, Mo.	Rev. L. K. Williams, D.D.	Prof. R. B. Hudson

1930 Chicago, Ill.	Rev. L.K.Williams,D.D.	Prof. R. B. Hudson
1931 Atlanta, Ga.	Rev. L.K.Williams,D.D.	Rev. J. M. Nabrit
1932 Cleveland, Ohio	Rev. L.K.Williams,D.D.	Rev. J. M. Nabrit
1933 Memphis, Tenn.	Rev. L.K.Williams,D.D.	Rev. J. M. Nabrit
1934 Oklahoma City	Rev. L.K.Williams,D.D.	Rev. J. M. Nabrit
1935 New York, N. Y.	Rev. L.K.Williams,D.D.	Rev. J. M. Nabrit
1936 Jacksonville, Fla.	Rev. L.K.Williams,D.D.	Rev. J. M. Nabrit
1937 Los Angeles, Cal.	Rev. L.K.Williams,D.D.	Rev. J. M. Nabrit
1938 St. Louis, Mo.	Rev. L.K.Williams,D.D.	Rev. J. M. Nabrit
1939 Philadelphia, Pa.	Rev. L.K.Williams,D.D.	Rev. J. M. Nabrit
1940 Birmingham, Ala.	Rev. L.K.Williams,D.D.	Rev. J. M. Nabrit
1941 Cleveland, Ohio	Rev. D.V.Jemison,D.D.	Rev. J. M. Nabrit
1942 Memphis, Tenn.	Rev. D.V.Jemison,D.D.	Rev. J. M. Nabrit
1943 Chicago, Ill.	Rev. D.V.Jemison,D.D.	Rev. J. M. Nabrit
1944 Dallas, Texas	Rev. D.V.Jemison,D.D.	Rev. J. M. Nabrit
1945 Detroit, Mich.	Dr. D. V. Jemison,D.D.	Dr. J. M. Nabrit

DEAR BRETHREN:

April 5, 1886, an open letter to the Baptist clergy and laymen was issued by Rev. Wm. Simmons, in America Baptist, asking if we should have a National Convention to discuss questions of interest to our beloved denomination. At that time the following reasons were given:

1. To promote personal piety, sociability, and a better knowledge of each other.
2. To be able to have an understanding as to the great ends to be reached by the denomination.
3. To encourage our literary men and women, and promote the interest of Baptist literature.
4. To discuss questions pertaining especially to the religious, educational, industrial, and social interests of our people.
5. To give an opportunity for the best thinkers and writers to be heard.
6. That, united, we may be more powerful for good and strengthen our pride in the denomination.

Having been solicited to write the Call by many whose names and endorsements are hereunto affixed, the Call is hereby made by their advice and solicitations for said convention to meet in St. Louis, Mo., August 25, 1886, 10:00 o'clock a.m. in the First Baptist Church, and the pastor thereof is hereby requested to serve as a Committee of Arrangements, with power to select his associates.

CITIES IN WHICH THE SESSIONS OF THE NATIONAL BAPTIST CONVENTION HAVE BEEN HELD FROM ITS ORGANIZATION IN 1880 TO THE PRESENT

YEARS	CITIES	PRESIDENTS	SECRETARIES
1880	Montgomery, Ala.	Rev. W. H. McAlphine	Rev. J. M. Armistead
1881	Knoxville, Tenn.	Rev. W. H. McAlphine	Rev. J. M. Armistead
1882	Macon, Ga.	Rev. W. H. McAlphine	Rev. W. R. Petiford
1883	Manchester, Va.	Rev. J. Q. Wilhite	Prof. J. E. Jones
1884	Meridian, Miss.	Rev. J. A. Foster	Rev. H. H. Mitchell
1885	New Orleans, La.	Rev. W. A. Brinkley	Rev. S.T. Clanton, B.D.
1886*	St. Louis, Mo.	Rev. W. J. Simmons, D.D.	Rev. S.T. Clanton, B.D.
1887	Mobile, Ala.	Rev. W. J. Simmons, D.D.	Rev. S.T. Clanton, B.D.
1888	Nashville, Tenn.	Rev. W. J. Simmons, D.D.	Rev. J. L. Cohran
1889	Indianapolis, Ind.	Rev. W. J. Simmons, D.D.	Rev. J. L. Cohran
1890	Louisville, Ky.	Rev. W. J. Simmons, D.D.	Rev. J. L. Cohran
1891	Dallas, Texas	Rev. E. M. Brawley, D.D.	W. H. Steward
1892	Savannah, Ga.	Rev. M. Vann	W. H. Steward
1893	Washington, D.C.	Rev. M. Vann	W. H. Steward
1894	Montgomery, Ala.	Rev. E. C. Morris, D.D.	W. H. Steward
1895	Atlanta, Ga.	Rev. E. C. Morris, D.D.	W. H. Steward
1896	St. Louis, Mo.	Rev. E. C. Morris, D.D.	W. H. Steward
1897	Boston, Mass.	Rev. E. C. Morris, D.D.	W. H. Steward
1898	Kansas City, Mo.	Rev. E. C. Morris, D.D.	W. H. Steward
1899	Nashville, Tenn.	Rev. E. C. Morris, D.D.	Prof. W. L. Cansler
1900	Richmond, Va.	Rev. E. C. Morris, D.D.	Prof. W. L. Cansler
1901	Cincinnati, Ohio	Rev. E. C. Morris, D.D.	Prof. W. L. Cansler
1902	Birmingham, Ala.	Rev. E. C. Morris, D.D.	Prof. W. L. Cansler
1903	Philadelphia, Pa.	Rev. E. C. Morris, D.D.	Prof. W. L. Cansler
1904	Austin, Texas	Rev. E. C. Morris, D.D.	Prof. W. L. Cansler
1905	Chicago, Ill.	Rev. E. C. Morris, D.D.	Prof. W. L. Cansler
1906	Memphis, Tenn.	Rev. E. C. Morris, D.D.	Prof. W. L. Cansler
1907	Washington, D.C.	Rev. E. C. Morris, D.D.	Prof. W. L. Cansler
1908	Lexington, Ky.	Rev. E. C. Morris, D.D.	Prof. R. B. Hudson
1909	Columbus, Ohio	Rev. E. C. Morris, D.D.	Prof. R. B. Hudson
1910	New Orleans, La.	Rev. E. C. Morris, D.D.	Prof. R. B. Hudson
1911	Pittsburgh, Pa.	Rev. E. C. Morris, D.D.	Prof. R. B. Hudson
1912	Houston, Texas	Rev. E. C. Morris, D.D.	Prof. R. B. Hudson
1913	Nashville, Tenn.	Rev. E. C. Morris, D.D.	Prof. R. B. Hudson
1914	Philadelphia, Pa.	Rev. E. C. Morris, D.D.	Prof. R. B. Hudson
1915	Chicago, Ill.	Rev. E. C. Morris, D.D.	Prof. R. B. Hudson
1916	Savannah, Ga.	Rev. E. C. Morris, D.D.	Prof. R. B. Hudson
1917	Muscogee, Okla.	Rev. E. C. Morris, D.D.	Prof. R. B. Hudson
1918	St. Louis, Mo.	Rev. E. C. Morris, D.D.	Prof. R. B. Hudson
1919	Newark, N. J.	Rev. E. C. Morris, D.D.	Prof. R. B. Hudson
1920	Indianapolis, Ind.	Rev. E. C. Morris, D.D.	Prof. R. B. Hudson
1921	Chicago, Ill.	Rev. E. C. Morris, D.D.	Prof. R. B. Hudson
1922	St. Louis, Mo.	Rev. W. G. Parks, D.D.	Prof. R. B. Hudson
1923	Los Angeles, Cal.	Rev. L. K. Williams, D.D.	Prof. R. B. Hudson
1924	Nashville, Tenn.	Rev. L. K. Williams, D.D.	Prof. R. B. Hudson
1925	Baltimore, Md.	Rev. L. K. Williams, D.D.	Prof. R. B. Hudson
1926	Ft. Worth, Texas	Rev. L. K. Williams, D.D.	Prof. R. B. Hudson
1927	Detroit, Mich.	Rev. L. K. Williams, D.D.	Prof. R. B. Hudson
1928	Louisville, Ky.	Rev. L. K. Williams, D.D.	Prof. R. B. Hudson
1929	Kansas City, Mo.	Rev. L. K. Williams, D.D.	Prof. R. B. Hudson

1930	Chicago, Ill.	Rev. L.K.Williams,D.D.	Prof. R. B. Hudson
1931	Atlanta, Ga.	Rev. L.K.Williams,D.D.	Rev. J. M. Nabrit
1932	Cleveland, Ohio	Rev. L.K.Williams,D.D.	Rev. J. M. Nabrit
1933	Memphis, Tenn.	Rev. L.K.Williams,D.D.	Rev. J. M. Nabrit
1934	Oklahoma City	Rev. L.K.Williams,D.D.	Rev. J. M. Nabrit
1935	New York, N. Y.	Rev. L.K.Williams,D.D.	Rev. J. M. Nabrit
1936	Jacksonville, Fla.	Rev. L.K.Williams,D.D.	Rev. J. M. Nabrit
1937	Los Angeles, Cal.	Rev. L.K.Williams,D.D.	Rev. J. M. Nabrit
1938	St. Louis, Mo.	Rev. L.K.Williams,D.D.	Rev. J. M. Nabrit
1939	Philadelphia, Pa.	Rev. L.K.Williams,D.D.	Rev. J. M. Nabrit
1940	Birmingham, Ala.	Rev. L.K.Williams,D.D.	Rev. J. M. Nabrit
1941	Cleveland, Ohio	Rev. D.V.Jemison,D.D.	Rev. J. M. Nabrit
1942	Memphis, Tenn.	Rev. D.V.Jemison,D.D.	Rev. J. M. Nabrit
1943	Chicago, Ill.	Rev. D.V.Jemison,D.D.	Rev. J. M. Nabrit
1944	Dallas, Texas	Rev. D.V.Jemison,D.D.	Rev. J. M. Nabrit
1945	Detroit, Mich.	Dr. D. V. Jemison,D.D.	Dr. J. M. Nabrit

DEAR BRETHREN:

April 5, 1886, an open letter to the Baptist clergy and laymen was issued by Rev. Wm. Simmons, in America Baptist, asking if we should have a National Convention to discuss questions of interest to our beloved denomination. At that time the following reasons were given:

1. To promote personal piety, sociability, and a better knowledge of each other.
2. To be able to have an understanding as to the great ends to be reached by the denomination.
3. To encourage our literary men and women, and promote the interest of Baptist literature.
4. To discuss questions pertaining especially to the religious, educational, industrial, and social interests of our people.
5. To give an opportunity for the best thinkers and writers to be heard.
6. That, united, we may be more powerful for good and strengthen our pride in the denomination.

Having been solicited to write the Call by many whose names and endorsements are hereunto affixed, the Call is hereby made by their advice and solicitations for said convention to meet in St. Louis, Mo., August 25, 1886, 10:00 o'clock a.m. in the First Baptist Church, and the pastor thereof is hereby requested to serve as a Committee of Arrangements, with power to select his associates.

Official Directory

OF THE NATIONAL BAPTIST CONVENTION, U. S. A., INC.

PRESIDENT

Rev. D. V. Jemison, D.D. 1609 Lapsley Street, Selma, Alabama

VICE-PRESIDENT-AT-LARGE

Rev. A. L. Boone, D.D. 55th and Scoville Sts., Cleveland, Ohio

REGIONAL VICE-PRESIDENTS

Rev. T. S. Harten, D.D. 443 Franklin Street, Brooklyn, N. Y.

Rev. W. D. Carter, D.D. 855 Manzanita, Pasadena, Calif.

Rev. E. W. Perry, D.D. 511 Third St., Oklahoma City, Okla.

SECRETARY

Rev. J. M. Nabrit, D.D. 682 Lauderdale, Memphis, Tenn.

ASSISTANT SECRETARY, EMERITUS

Rev. E. H. McDonald, D.D. 651 West Central Ave., St. Paul, Minn.

ASSISTANT SECRETARIES

Rev. U. J. Robinson, D.D. 256 North Franklin St., Mobile, Ala.

Rev. G. W. Lucas, D.D. Dayton, Ohio

Rev. T. Moore King 156 S. Juliet Street, Juliet, Ill.

Rev. W. P. Whitfield 709 Poindexter St., Jackson, Miss.

TREASURER

Rev. B. J. Perkins 4202 Finney Ave., Cleveland, Ohio

STATISTICIAN

Rev. Roland Smith, D.D. 239 Auburn Ave., N.E., Atlanta, Ga.

HISTORIOGRAPHER

Rev. T. S. Boone, A.M. 9244 Delmar St., Detroit, Mich.

EDITOR

Rev. J. Pius Barbour, Th.M. 1614 W. Second St., Chester, Pa

BAPTIST WORLD ALLIANCE

Headquarters—4 Southampton Row, London, W. C. 1, England.

Next Session—Indefinitely postponed because of the war.

OFFICERS, 1939—19—

President REV. J. H. RUSHBROOKE, London, England.

Vice-Presidents

REV. T. C. BAU, China; REV. E. A. FRIDELL, U.S.A.; REV. H. LUCKEY, Germany; *REV. N. J. NORDSTR'M, Sweden; REV. L. R. SCARBOROUGH, U.S.A.; REV. C. J. TINSLEY, Australia; *REV. L. W. WILLIAMS, U.S.A.

General Secretary

REV. WALTER O. LEWIS, 115 8th St., N.W., Washington 1, D. C., U.S.A.

Honorary Associate Secretaries

REV. C. D. GRAY, Lewiston, Maine; REV. L. D. NEWTON, Atlanta, Ga.

Honorary Eastern Treasurer, C. T. LEQUESNE, London.

Honorary Western Treasurer ALBERT MATTHEWS, Toronto.

Other Members of the Executive Committee

Brazil—Rev. Jorn Soren.

Britain—Rev. M. E. Aubrey; Rev. B. G. Griffith; Gilbert Laws; H. L. Taylor.

Burma—U. Hla Bu; Nicodemus Jonadab.

Canada—H. H. Bingham; Rev. W. C. Smalley.

China—

Hungary—Rev. M. Baranyay.

Italy—Prof. L. Paschotto.

Japan—Rev. Yugoro Chiba.

Latvia—Prof. J. Riess.

Norway—Prof. A. T. Ohrn.

Poland—Rev. L. Miksa.

Roumania—Rev. Luca Sezonov.

South Africa—Rev. J. C. Stern.

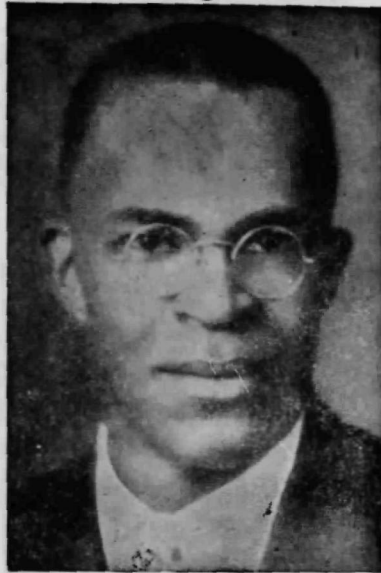
United States of America—Rev. E. F. Adams; D. M. Albaugh; Rev. M. E. Dodd; Rev. Everett Gill; Rev. D. V. Jemison; Rev. J. M. Nabrit; Rev. G. L. Prince; Rev. E. A. Fuller; Rev. L. W. Smith.

At Large—Rev. T. F. Adams; Mrs. F. W. Armstrong; Mrs. Ernest Brown; Frau Dr. Dienel; Rev. T. G. Dunning; Mrs. S. W. Layten; F. H. Leavell; Mrs. John Nuveen.

* Deceased.

**THE FOREIGN MISSION BOARD OF THE NATIONAL
BAPTIST CONVENTION, INC.**

701 South 19th Street, Philadelphia, Penna.



Dr. C. C. Adams, D. D.

*Corresponding Secretary, Foreign
Missionary Board, National Baptist
Convention, U.S.A., Inc.*

With heart felt gratitude, we acknowledge support given us by all concerned, of pastors, churches and individuals who have made possible the high lights of the fiscal year, July 1st 1945 to June 30th, 1946. We realized our budget of \$200,000.00 and a little over.

(2) Our ten year expansion and building program is advancing according to schedule. One building at Bendoo has been finished and at other stations buildings are being erected and material assembled. All buildings are of earthen materials.

(3) We have sent out three missionaries and three others will be going soon.

(4) There have been more than 4,000 converts, and we

have a combined student body of more than 6,000. Thousands have been treated in our two hospitals. The United States Health Mission, in Liberia has moved in and been co-ordinated with the hospital in Monrovia.

(5) The past year was the first time we ever had as many as 2,000 churches giving something. We had 2,096 churches. Five churches gave above \$2,000.00 up to and above \$3,000.00. Fifteen of our churches gave from \$1,000.00 to above \$1,500.00. Total number of churches, organizations and individuals contributing for the year is 4,048.

(6) Our future plans call for the execution of our ten year expansion program and an annual budget of \$200,000.00 for the next year.

C. C. Adams, Cor. Sec'y.

THE GREAT FOREIGN MISSIONS ENTERPRISE

Few people realize how great is the work of foreign mission, that is the movement to Christianize the heathen people of the earth, as carried on by the various Christian denominations, Catholics and non-Catholics.

The International Missionary Council, 156 Fifth Avenue, New York, in 1938, published *The Interpretive Statistical Survey of world missions* (price \$5.00) which presents the following astounding summary:

Countries or Islands occupied	92
Native pastors, teachers, physicians and nurses	203,468
Missionaries at work	27,577
Christian schools maintained, all types	56,891
Pupils under instruction	9,925,134
Hospitals maintained	1,092
Nurses in attendance	13,090
In-patients cared for	843,367
Surgical operations performed (1938)	348,210
Dispensaries maintained	2,351
Individual patients treated	8,126,268
Foreign Missions contributions	\$30,938,450
Contributions of native Christians	\$28,738,790
Total contributions for foreign mission work	\$59,677,240

ROMAN CATHOLICS IN FOREIGN MISSION FIELDS

Japanese Empire

Total Population	91,229,041
Catholic Population	250,747
NATIVE PRIESTS	151

China

Total Population	462,435,007
Catholic Population	3,500,000
NATIVE PRIESTS	1,800

Indo-China, Malacca and Siam

Total Population	39,617,664
Catholic Population	1,489,010
NATIVE PRIESTS	1,276

India, Burma and Ceylon

Total Population	348,012,378
Catholic Population	2,486,935
NATIVE PRIESTS	1,158

Oceania

Total Population	58,307,815
Catholic Population	844,654
NATIVE PRIESTS	16

Africa

Total Population	132,880,380
Catholic Population	4,945,665
NATIVE PRIESTS	281

—Catholic Missions Magazine.

THE B. Y. P. U. BOARD

The B. Y. P. U. Board was organized in 1899 at Nashville, Tenn. This Board promotes the religious and denominational training of the young people in our churches and helps in the development of Christian leadership. The B. Y. P. U. Board does much of its work through the distribution of literature prepared by the editors.

The Board has kept abreast the task of preparing Christian leaders by bringing to churches the best in content, methods, and technique in religious education.

The B. Y. P. U. Board attempts to provide the churches a graded training program which makes ample provision for all ages in the church by dividing our church members into groups. The Board believes in the program of the

Training Union to the extent that it will gladly supply the first quarter's literature free of charge to any new organization. There are very definite blessings which the Training Union brings to the churches. For example: enrich the fellowship; enlarge the church; increase attendance for evening worship; enlarge the doctrinate and prepare church members to carry on the work of the kingdom in a most worthy manner.

Prof. E. W. D. Isaac, Jr., 409 Gay Street, Nashville, Tenn., is secretary of the B. Y. P. U. Board.



THE NATIONAL SUNDAY SCHOOL AND B. T. U. CONGRESS



Rev. W. H. Jernigan, D.D.
President

The National Sunday School and B. T. U. Congress was organized in 1916 by the order of the National Baptist Convention, Incorporated. It is an auxiliary of the National Baptist Convention and is operated with the assistance of the different boards of the parent body.

The impelling motive, born of vision and consecration, that actuated the founders to organize the Congress, was:

(a) To promote the growth and efficiency of the Sunday Schools, and Baptist Young People's Unions within the bounds of the National Baptist Convention;

(b) To increase the intelligence and working power of leaders in these respective organizations;

(c) To promote love of Bible study and religious services.

(d) To stimulate a spirit of consecration to religious services;

(e) To advance the doctrinal claims of the Baptist denomination;

(f) To increase the measure of interest in the process of world-wide evangelism;

(g) To disseminate information in regard to our Baptist organization and program.

All of which means the uplift of the Christ, who hath said, "And I, if I be lifted up, will draw all men unto me."

The founders realized that man has always needed religion. In memorable words, the Psalmist phrased the oldest and most enduring need of the soul, when he said: "As the heart panteth after the water brooks, so panteth my soul after thee, O God."

The founders realized:

(a) That man needs religion amid the strains and hard experiences of life;

(b) That man needs religion—for the full self-realization that comes with successful and happy experience;

(c) That man needs religion—in the redemption of the social order;

(d) That man needs religion—as he adjusts himself to a world of new knowledge and a scientific achievement.

The founders realized that, to make the Christian religion effective in meeting man's needs for the fullest possible

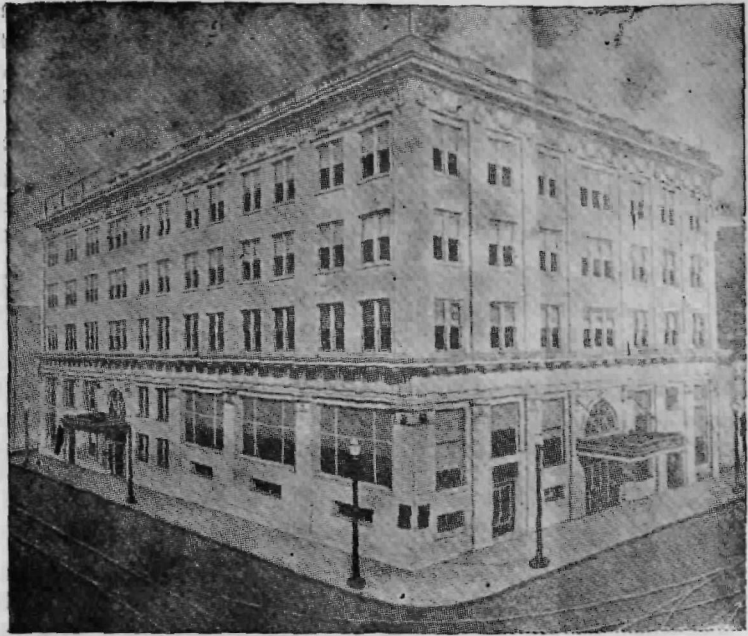
realization of life, there must be a method by which to proceed and an agency through which to work.

The pioneers, in the founding of the Congress, wrought better than they knew. 'Twas Isaac who laid the sub-soil; 'twas Bryant who cultivated it; 'twas Cannon who directed both in season and out; 'twas the loyal leaders and workers who watered it; and it was God and the loyal Sunday Schools and B. Y. P. U.'s that gave the increase. And although today, these with other pioneers are resting beneath the shade of the trees over yonder, the spirit that motivated their activities has been caught up by consecrated young leaders and workers, who are nobly carrying on.

Marvelous has been its progress under the leadership of its present consecrated and aggressive head. Dr. W. H. Jernigan, the President. He has the full cooperation of Dr. A. M. Townsend, Director General, and Mr. E. W. D. Isaac, Jr., Associate Director General. Increasing progress is noted each year in attendance, in interest, in enthusiasm, in program, in spirit, in finance and results. Dr. Jernigan is a successful leader and organizer of young people. He is ever alert to keep up to standards and methods, and withal to keep the young people enthusiastic and interested.

President, W. H. Jernigan, Washington, D. C.; Vice-President-at-Large, Rev. O. C. Maxwell, New York City; Secretary, Prof. H. T. Sims, Wichita, Kansas; Assistant Secretary, Mrs. Bessie Estell, Birmingham, Alabama; Treasurer, Mr. Matthew Burgess, Chicago, Illinois; Music Directress, Miss Lucie F. Campbell, Memphis, Tennessee; Director General, Prof. E. W. D. Isaac, Jr., Nashville, Tennessee; Rev. E. C. Estell, Dallas, Texas, Associate Director; Dean of Congress Rev. Albert Fisher, Detroit, Michigan.

**THE WORK OF THE SUNDAY SCHOOL PUBLISHING
BOARD FOR THE CONVENTION YEAR 1945-1946.**



National Baptist Publishing House, Nashville, Tenn.

The Sunday School Publishing Board is charged with the responsibility (1) of the getting out and the distribution of the Sunday school literature, religious publications and standard song books for our great denominational constituency. (2) Of sponsoring, directing and projecting the program of Religious Education of the National Baptist Convention, U.S.A., Inc. (3) It has been also the responsibility of the Sunday School Publishing Board to sponsor and finance the efforts in raising funds to meet certain obligations of the National Baptist Convention.

Its work for this year in addition to its carrying on its regular routine work in the publication of our Sunday school literature, supplies and so on, and the projection and development of the work of its Christian Education Department, it has given cooperation and support to other

activities of the National Baptist Convention: (a) in the paying of the salaries of teachers and workers at the American Baptist Theological Seminary. (b) In the operation (both expense and salaries) of the National Baptist Missionary Training School at Nashville. (c) In the redemption of the Bonds or Refunding Notes of the National Baptist Convention, U.S.A., 1934 series. (d) Salaries, material and labor in publishing the National Baptist Voice. (e) In the needed repairs of the National Baptist Missionary Training School buildings on the campus at Nashville, Tennessee.

Although the work of the Sunday School Publishing Board has been greatly handicapped on account of the rationing of paper and printing materials and supplies and in the midst of threatening strikes and labor disorders, we have been able to continue operation and to meet the demands of our constituency through their fine spirit of co-operation and loyalty and sympathy.

OPERATIONS OF HOME MISSION BOARD



Rev. T. Theo. Lovelace

The Home Mission Board has made marked head-way this year. As a matter of fact, each year now our gains are greater and greater. As have hoped we would, the Board Department of our Convention is becoming more and more Home Mission minded. As a result their contributions are made more frequently and substantially.

THE WEST

Our interests on the Western Front is still greater. Our work in Arizona is progressing nicely, and yet the outlook is far better. Because of some difficulties experienced in one section we have not been able to complete the church in Nogales, but President Kendrick has assured us that he has the interest of the Convention at heart, and they are ready to move further as soon as the Board can give them the go ahead signal. It will take as much as \$1,400 to put this building in order for worship. This we hope to do during the meeting in October.

The State of **New Mexico** has eight pastors and they are carrying on nicely with the Rev. O. F. Dixon, State President and Rev. J. S. Patton, Board Member. Each of these pastors with the exception of Rev. Dixon is on the pay roll of the Board.

In **Iowa** the Home Mission Board's work, under Chairman Robinson is flourishing.

In **Nebraska** Rev. W. E. Fort, a salaried missionary, is carrying on creditably.

In the states of **Montana, Idaho, Wyoming, Nevada, and Utah**, we have recently placed the Rev. McGriff, who is well acquainted with that territory, having both served as pastor and built churches out there over a period of many years.

It is our hope and prayer that this year the Board will be in a position to construct from the ground and repair our buildings in that section to the number of at least eight. The biggest objective of the Board this year is the improvement of the Nation-Wide Crusade for Christ on the 10th and 11th of December in Washington, D. C. Dr. E. L. Harrison of Washington has been selected General Director of the Evangelistic Crusade. Our plans will be discussed more thoroughly at the Convention, and we hope that this year will be the telling one in the field of Evangelism for the National Baptist Convention.

**WOMAN'S CONVENTION AUXILIARY
NATIONAL BAPTIST CONVENTION, UNITED STATES
OF AMERICA, INCORPORATED**

To The

The Woman's Auxiliary Convention was organized in 1900 at Richmond, Va., as an auxiliary to the National Baptist Convention. The Auxiliary cooperates and helps in every way to carry forward the work of the National Baptist Convention.

The Woman's Auxiliary, during its organization, has done a splendid work in promoting and developing missionary work in our churches, through the missionary societies. The societies have given impetus to the cause of missions, and developed an appreciation for kingdom work in churches. It has given, since the year 1900, to Foreign Missions, \$27,666.09; The National Training School at Washington, D. C., \$265,273.53; and to other educational purposes, including the American Baptist Theological Seminary, \$2,559.13.

High Points of Achievements

Raised first 1,500 dollars for Miss Delaney's work in Africa.

Established Training School in Washington in 1907.

Recommended and raised money for the erection of a hospital in Liberia, equipped its first staff by sending Dr. Pauline Dinkins and Nurse Ruth Occumy to open hospital in 1925.

Contributed largely through Foreign Mission Board to the support of Seuhn School. Have recommended and helped in work and selecting workers for both Institutions.

This year in Liberia we are raising \$50,000 for erection of a new home for nurses.

Hospital is now caring for U. S. A. coldiers, colored and white.

Cooperated with H. M. Board in organizing the Nassau Bahama Baptist Convention and the nursery for children and provided for the missionaries who worked there. (Work now suspended, but turned over to FMB, women will help support.)

Have been requested by National Baptist Convention to take over Training School for women and girls in Nashville. Plans for this work are now being considered.

The following persons are officers of the Woman's Auxiliary:

Mrs. S. W. Layton, President, 746 South 23rd Street, Philadelphia, Penn.

*Mrs. Jessie C. Mapp, First Vice-President, 3117 South Parkway, Chicago, Illinois.

Mrs. Viola L. Hill, Second Vice-President, Box 511, Orlando, Florida.

Miss Nannie H. Burroughs, Corresponding Secretary, National Training School for Women and Girls, Lincoln Heights, Washington, D. C.

Mrs. Vivienne L. Penick, Recording Secretary, Spokane, Washington.

*Mrs. Mary E. Goings, Assistant Secretary, 2100 East 11th Street, Kansas City, Mo.

Mrs. Gertrude E. Rush, Attorney, 20th Street, Des Moines, Iowa.

Mrs. H. M. Gibbs, 230 W. Jeff Davis, Montgomery, Alabama.

Mrs. E. Arlington Wilson, Historian, St. Louis, Mo.

Mrs. Maude J. Brockway, Parliamentarian, 1239 East 7th Street, Oklahoma City, Okla.

Mrs. Willie F. McKinney, Pianist, 20 Boulevard, N. E.

Mrs. M. J. Parker, Chorister, West Main Street, Dermott, Arkansas.

Mrs. Etta Versa Frye, National Director, 1821 12th St., N. W., Washington, D. C.

Mrs. W. J. Winston, Eastern Director, Baltimore, Md.

Mrs. Primrose Funches, Western Director, 4030 S. Parkway, Chicago, Ill.

*Deceased.

**BENEFIT BOARD OF THE NATIONAL BAPTIST
CONVENTION**



Rev. B. R. Riley
Secretary

In 1944 during the annual session of the National Baptist Convention in Dallas, Texas, I was elected Corresponding Secretary of the Benefit Board of the National Baptist Convention, U. S. A., Inc. Since that time I have been earnestly laboring to build a substantial fund for an annuity, or minister's retirement fund. Which program we have now under way.

And too, in 1945 I published a little booklet titled, "The Benefit Board and its Objectives," and I sent or gave every minister and christian worker I knew one of the copies.

We have also organized regions throughout our country, headed by men who are interested in the work to collect special money for our annuity fund. The slogan is "Trust in God, and collect \$35,000.00 for the retired ministers and Christian workers of the National Baptist Convention, U. S. A., Inc."

We have paid several sick claims and kept the office going fairly well, and have some money on hand.

AMERICAN BAPTIST THEOLOGICAL SEMINARY

Nashville 7, Tenn.



Ralph W. Riley, B. A., B. D., D. D.

It is now quite clear for one to predict the tremendous hazards facing our people in the future without the training and development of a profoundly significant educated and consecrated Christian leadership in our pulpits. The ability to think clearly and lead fearlessly our people for the next fifty years is the greatest challenge which faces our people; and to this all important task the American Baptist Theological Seminary is wholly dedicated.

Despite the fact that again this year we have been retarded in our expansion program due to shortages in facilities, material and labor as a result of government priorities and control we have made some significant gains. Our new dormitory, at this writing is nearing completion and will probably be finished by September 16 and be available for use for the fall term. We have spent a considerable sum on the improvements of our campus in the construction of roads, on the increase of our water supply and on the completion of our newly constructed Central Heating Plant.

Since 1944 we have proudly noticed outstanding and increasing gains in our enrollment, from sixty-seven stu-

dents during the term of 1944-45 to ninety-seven full-time students in the term of 1945-46. At present applications have already gone beyond our promised capacity for 1946-47.

A revised curriculum, giving a complete nine months term, new features to include the summer term of 1947 and three faculty additions are but a few indications of the sustained interest and growth of the institution which should claim the support of every loyal Baptist in America.

The National Baptist Convention, U. S. A., Inc., in the American Baptist Theological Seminary has the responsibility of courageously, living up to its greatest test. If we fail in the test we cannot match this all-important hour in, seizing as we should this spiritual opportunity of furnishing the guidance and training for the many of our denominations and race's leader, who are now in the rough, but with limited and most meager assistance can and will not only be blessed but become, a BLESSING to all.

THE EDUCATIONAL BOARD

The National Baptist Convention, U. S. A., Inc.

In 1896 this Board with Dr. T. J. Searcy, Memphis, Tenn., Chairman, and Dr. W. Bishop, Johnson, Washington, D. C. Corresponding Secretary, had its early start under two of the best trained Ministers and Pastors of the Convention. Secretary W. Bishop, Johnson edited the "Educational Journal" in the interest of the Board and the National Baptist Convention.

President, Dr. E. C. Morris, gave every encouragement and all Educational endeavors were under the jurisdiction of this Board. Under the leadership of Dr. L. K. Williams, a new day dawned for the Educational Board, Dr. Sutton E. Griggs, Corresponding Secretary, touched the hearts of the Southern Baptist Convention, as the result, the American Baptist Theological Seminary came into existence, but in course of events the development of the school was taken from the Educational Board and given into the hands of a Seminary Commission, with representatives of both Conventions.

This new arrangement gave the Educational Board a more difficult task and a "Question" as to its real objectives. After a few years of thinking and efforts of earnest and hard working Corresponding Secretaries, at last the Board started anew. Chairman Calvin Perkins, serving in a dual capacity, held the reins until the leadership of Dr. D.

V. Jemison, President, with a keen eye, and with a broad spirit and generous heart, set in motion the Educational stewardship and rightfully take the place to give tone and dignity to the National Baptist Convention.

Objectives

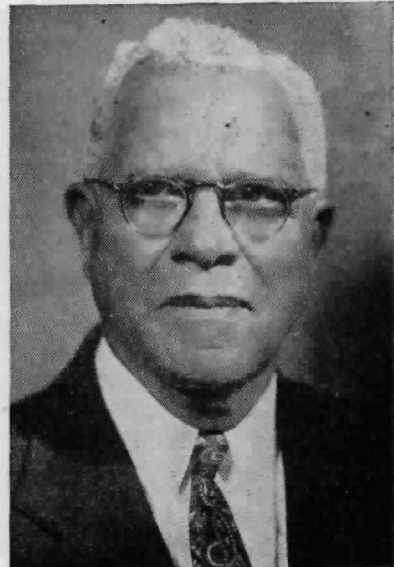
First, the Financial Goal of the Educational Board is \$15,000. This money is to be raised in Educational Campaigns, donations from churches, Associations, Conventions and individuals. Disbursements, \$5,000.00 for the A. B. T. Seminary, \$5,000.00 for various Colleges affiliated with the National Baptist Convention, \$5,000.00 for salaries and general expenses of the Board.

Second, Campaigns of Religious Education in Inspirational meetings, Bible Institutes, School of Religion and Training Course for workers in our various departments of church work.

Third, special messages and addresses in schools and churches, securing scholarships for worthy Christian workers



Rev. J. L. Campbell
Pastor of the St. Stephens Baptist Church, Memphis, Tennessee and Chairman of the Finance Commission of the National Baptist Convention, U.S.A., Inc.



Rev. W. D. Carter, D.D.
Regional Vice-President, National Baptist Convention, U.S.A., Inc.

NATIONAL BAPTIST CONVENTION, U.S.A., INC.

Condensed Balance Sheet

June 30, 1945

ASSETS

CURRENT ASSETS:

Cash		\$ 202,125.94
Accounts Receivable	16,549.91	
Inventories	66,823.80	
Marketable Securities	18,738.57	
Prepaid Expenses	256.13	
Total Current Assets		\$ 304,494.35

FIXED ASSETS:

Land and Building (Net)	\$91,597,907.00	
Furniture and Fixtures (Net)	13,728.03	
Machinery and Equipment	36,440.73	
Other Fixed Assets	1.00	
Total Fixed Assets		\$ 966,148.83

OTHER ASSETS:

Special Funds	\$ 1,545.14	
Investment in N. B. C. Bonds	126,000.00	
Total Other Assets		\$ 127,545.14

TOTAL ASSETS **\$1,398,188.32**

LIABILITIES

CURRENT LIABILITIES:

Accounts and Notes Payable		\$ 21,537.37
Notes Payable	\$ 17,007.35	
Other Current Liabilities	8,129.73	
Total Current Liabilities		\$ 46,674.45

FUNDED DEBT:

First Mortgage Bonds	None	
Second Mortgage Bonds	\$126,000.00	
Refunding 5's of 1944	38,450.00	
Notes Payable (Due after 1 Year)	\$ 40,000.00	\$ 204,450.00

SURPLUS:

Excess of Assets over Liabilities		\$1,147,063.87
		\$1,398,188.42

●

*Obligations of Boards and Departments to each other and to N. B. C. (except bonds) have been eliminated in arriving at this statement. Books audited and statements prepared and certified to by J. B. Blayton & Co., Certified Public Accountants, Atlanta, Ga.

NEGRO BAPTIST BODIES



Rev. Roland Smith, D.D.
Statistician

There are four Baptist Bodies to which Negroes belong: Negro Baptists,* Colored Primitive Baptists, United American Freewill Baptists, and Regular Baptists. With the exception of Regular Baptists, these bodies are composed of strictly Negro congregations. The Regular Baptists in 1926 had 348 churches with white congregations and one Negro church with only 38 members.

Negro Baptists:—The largest of all Baptist bodies is that of Negro Baptists. This body in 1936 was composed of 23,083 churches with a total of 3,782,464 members: This represents an increase of 1,012, or 4.6 per cent churches and 585,841, or 8.5 per cent members over the corresponding figures for 1926. About one-third of all the churches and about one-half of the total membership of the Negro Baptist denomination are located in urban territory.

Of the 21,976 Negro Baptist Sunday Schools, 7,250, or 30.0 per cent, are connected with urban churches. The num-

ber of Sunday Schools in 1936 represents an increase of 3,221, or 14.7 per cent, over the number for 1926.

In 1936 the Negro Baptists had 21,350 church edifices, 6,949, or 32.5 per cent, of which were located in urban territory. The total value of these church edifices was \$93,798,181. The average value of all edifices was \$4,457; for urban edifices, \$9,444, and for rural edifices, \$2,044.

Of the 23,093 Negro Baptist churches, 4,109, or 18.8 per cent, had debts to the amount of \$10,913,652. The churches reporting debts were about evenly divided between urban and rural areas but the amount of debts on urban churches was about five times the amount on rural churches.



Rev. E. W. Perry, D.D.
*Regional Vice-President
National Baptist Convention,
U.S.A., Inc.*



Rev. A. J. Robinson, D.D.
*Assistant Secretary, National
Baptist Convention, U.S.A., Inc.*

The total expenditures as reported by Negro Baptist reporting. This represents a decrease in the average ex-churches for 1936 was \$14,978,506, or about \$661 per church penditure from 1926 or \$303 per church.

Other Baptist Bodies—In the Colored Primitive Baptist denominations, there are 1,009 churches with a total membership of 43,897 persons. Thirty-five per cent of all the churches were located in urban territory with a membership of 18,414, or 41.9 per cent, of the total membership. Less than one-half of the Colored Primitive Baptist churches reported Sunday schools.

In 1936, the value of 876 out of a total of 889 Colored Primitive Baptist church edifices amounted to \$1,643,804, or an average of \$1,876 per church edifice. The average value of urban church edifices was \$3,331, as compared with \$1,897 for rural edifices.



Rev. W. P. Whitfield
Assistant Secretary
National Baptist Convention,
U.S.A., Inc.



Rev. Marshall Sheppard, D.D.
Chairman Foreign Mission Board
National Baptist Convention,
U.S.A., Inc.

Ninety-eight Colored Primitive Baptist churches reported debts to the amount of \$68,285. Urban churches had almost three times as much debt as rural churches. The total expenditures of this body for 1936 was \$207,352, or \$222 per church reporting. This represents a decrease in average expenditure from 1926 of \$136.

The United American Freewill Baptists number 226 churches with a membership of 19,616 persons. Since all of the churches of this body are located in Southern states it is to be expected that a large percentage of the churches are in rural territory. Actually, 77 per cent of all of the United American Freewill Baptist churches are in rural areas and these churches account for about 66 per cent of



Rev. G. W. Lucas, D.D.
*Assistant Secretary,
National Baptist Convention,
U.S.A., Inc.*

the total membership of this body. Of the 226 churches in this body, 200 have Sunday schools.

There are 208 United American Freewill Baptist church edifices which have a total value of \$468,883. The average value of all church edifices was \$2,265; of urban church edifices, \$3,518, and of rural church edifices, \$1,153. Twenty churches reported debts to the amount of \$18,812. The total expenditures of churches of this body in 1936 was \$78,712, or \$76 from the average expenditure of 1926.

NORTHERN BAPTIST CONVENTION

The early historic local independency of Baptist churches in America tended to impede the formation of any general organization until in 1814 a General Missionary Convention was formed to permit Baptists to express themselves in terms of missionary activities. In 1845 the State conventions in the South withdrew to organize the Southern Baptist Convention. In 1907 the Northern Baptist Convention was organized, a delegated body, under whose direction the many agencies of the Baptists in the North and West now operate.

Churches: 7,365. Inclusive Membership: 1,538,871 (1942). Membership 13 years of age and over: 1,461,027, Est.

General Organization

National Baptist Convention, annual. (Next meeting, uncertain. 1943 annual sessions omitted on account of war emergency.) Headquarters: 152 Madison Ave., New York.

SOUTHERN BAPTIST CONVENTION

In 1845 Southern Baptists withdrew from a General Missionary Convention over the question of slavery and other matters and formed the Southern Baptist Convention.

Churches: 25,737. Inclusive Membership: 5,367,129 (1942). Membership 13 years of age and over: 5,098,772, Est.

General Organization

Officers: Pres., Hon. Pat M. Neff, Baylor University, Waco, Texas.; Secs., Rev. Hight C. Moore, 161 8th Ave., N., Nashville, Tenn.; J. Henry Burnett, Macon, Ga.

Executive Committee: Offices 161 8th Ave., N., Nashville, Tenn. Exec. Sec., Dr. Austin Crouch; Sec. Prom., Dr. J. E. Dillard; Pub. Dir., Dr. Walter M. Gilmore.

HONOR ROLL
of
Pastors



Rev. E. T. Lewis

*Pastor of the Mutchmore Memorial
Baptist Church, Philadelph'a, Pa.*



Rev. J. H. Jackson, D.D.

*Pastor, Olivet Baptist Church
Chicago, Illinois*

The persons on this honor roll distributed one hundred or more copies of the National Baptist Bulletin in their church membership. We hope that more of pastors will cooperate in this way. These, because of their cooperation and support are placed upon the National Baptist Bulletin honor roll.

NATIONAL BAPTIST CONVENTION, U. S. A., INC.

The older and parent convention of Negro Baptists. This body is to be distinguished from the National Baptist Convention of America, usually referred to as the "unincorporated" body. The "incorporated" Convention is a constituent member of the Federal Council of the Churches of Christ in America.

Churches: 24,575. Inclusive Membership: 4,122,315 (1946.)
Membership 13 years of age and over: 3,619,451.

General Organization

Convention, annual. (Next meeting, September, 1946).

Officers: Pres., Dr. D. V. Jemison, 1605 Lapsley St., Selma, Ala.; Vice-Pres.-at-Large, Dr. A. L. Boone, 2234 E. 81st St., Cleveland, O.; Reg. Vice-Pres., Dr. T. S. Harten, 441



Dr. J. W. Tate

*Pastor, Walker Memorial Baptist Church
New York, N. Y.*



Rev. N. C. Shepard, D.D.

*Pastor, Rising Star Baptist Church
Sylacauga, Alabama*

Franklin St., Brooklyn N. Y.; Dr. E. W. Perry, 511 E. 3rd St., Oklahoma City, Okla.; Dr. W. D. Carter, 855 Manzanita Ave., Pasadena, Calif.; Sec., Dr. J. M. Nabrit, 862 Lauderdale St., Memphis, Tenn.; Treas., Rev. B. J. Perkins, 7803 Cedar Ave., Cleveland, O.; Stat., Dr. Roland Smith, 239 Auburn Ave., N. E., Atlanta, Ga.; Hist., Rev. T. S. Boone, 9244 Delmar Street, Detroit, Michigan.

Other Organizations

Foreign Mission Board: 701 S. 19th St., Phila., Pa., Sec., Dr. C. C. Adams.

Home Missions and Evangelism Board: 4834 Vincennes Ave., Chicago, Ill. Sec., Rev. T. T. Lovelace.

Benefit Board: 3909 Wilder St., Dallas, Texas. Sec., Rev. B. R. Riley.

Educational Board: 4237a W. Page Blvd., East St. Louis, Ill. Dr. Arlington Wilson.



Rev. J. C. Austin, D.D., LL.D.
*Pastor of the Pilgram Baptist Church
Chicago, Illinois*



Rev. Gardner Taylor, D.D.
*Pastor, Mt. Zion Baptist Church
and
Editor of the Louisiana Advocate
Baton Rouge, La.*

B. T. U. Board: 409 Gay St., Nashville, Tenn. Sec., E. W. D. Isaac, Jr.

Sunday School Publishing Board: 412 4th Ave., N., Nashville, Tenn. Sec., Dr. A. M. Townsend.

Laymen's Movement: Hot Springs, Ark. Pres., John L. Webb.

Woman's Auxiliary Convention: 764 S. 23rd St., Philadelphia, Pa. Pres., Mrs. S. W. Layten.

National S. S. and B. T. U. Congress: Pres., Rev. W. H. Jernagin, 1341 3rd St., N. W., Washington, D. C.

PUBLICATION: National Baptist Voice, Rev. J. Pius Barbour, Editor, Chester, Pa.

NATIONAL BAPTIST CONVENTION OF AMERICA

This is a body usually referred to as the "Unincorporated" Convention, not to be confused with the "Incorporated"



Dr. L. A. Pinkston
*President, General Missionary
Baptist State Convention
Atlanta, Georgia*

Convention, U. S. A., Inc., from which this body withdrew in 1916.

Statistics for Negro Baptists were presented in a combined report in the Federal Censuses of Religious Bodies for 1936 and 1926, with a note to the effect that about 90 per cent of the members have affiliation with the National Baptist Convention, U. S. A., Inc.

THE NEGRO CHURCH

Negro Baptist Bodies

Some religious bodies are made up of churches conducted exclusively by and for Negroes; others are strictly white, while a certain number include white and Negro congregations.

Altogether there are 24 religious bodies that are exclusively Negro. By far the largest is the Negro Baptist which has 24,460 churches and a membership of 4,122,315 persons. The African Methodist Episcopal body has 4,578 churches with 493,357 members; the African Methodist Episcopal Zion Church comes next with 2,252 churches, and 414,244 members, while the Colored Methodist Episcopal body accounts for 2,063 churches and 269,915 members. These four bodies include about 78 per cent of all the Negro churches and about 86 per cent of all Negro church members in the United States.

There are thirty denominations with both Negro and white congregations. The Methodist Episcopal Church is the largest in this group with 3,743 churches and 332,347 members in 1926.

If we group all denominations into three bodies: Baptists, Methodists and Others, we find that the Baptist body has about twice as many churches and more than twice as many members as the Methodist body, which reports 12,933 churches and 1,535,366 members. Other denominations account for 3,616 churches and 387,328 members.

The Baptists and Methodists have respectively 67.3 per cent and 69.1 per cent of their churches located in rural districts; whereas, more than one-half of the churches of all other denominations are located in urban territory. The memberships of both the Baptist and Methodist bodies are divided between the rural and urban districts. However, the

membership of other denominations is predominantly urban.

The Baptists have \$113,317,655,000 invested in church edifices; the Methodists, \$61,890,683; the other denominations, \$21,680,011. The average value of church edifices for Baptist, Methodist and others is \$4,334, \$5,207, and \$7,472 respectively.

Of a total of 8,648 Negro churches which reported debts, 4,227 were Baptist; 3,537 were Methodist, and 884 were Other denominations. The Baptists had debts to the amount of \$11,000,749. The debts of the Methodist body were \$7,419,300, while the debts of the other denominations were \$2,982,964.

The Baptist church conducted 22,598 Sunday Schools; the Methodist church conducted 12,042, and 2,969 Sunday schools were conducted by other denominations.

NEGRO CHURCHES

	Baptist	Methodist	Other	Total
CHURCHES				
REPORTING DEBTS:				
All.....	4,227	3,537	884	8,648
Urban.....	2,077	1,723	608	41,048
Percent Urban.....	49.1	48.7	68.8	51.0
Rural.....	2,150	1,814	276	4,240
Percent Rural.....	50.9	51.3	31.2	49.0
<hr/>				
	Baptist	Methodist	Other	Total
CHURCH DEBTS:				
All.....	\$11,000,749	\$ 7,419,300	\$ 2,982,964	\$ 21,403,013
Urban.....	9,177,295	6,604,614	2,885,359	18,667,258
Rural.....	1,823,454	814,696	97,605	2,735,755
CHURCH EXPENDITURES:				
All.....	\$15,265,570	\$11,666,393	\$ 4,441,291	\$ 31,373,254
SUNDAY SCHOOLS.....				
All.....	22,598	12,042	2,969	37,609
Urban.....	7,477	3,762	1,562	12,801
Percent Urban.....	33.1	31.2	56.6	34.0
Rural.....	15,121	8,280	1,407	24,808
Percent Rural.....	66.9	68.8	47.4	66.0
CHURCH PARSONAGES:				
All.....	2,287	4,465	593	7,345

Note: Data for the Methodist Episcopal Church, the Methodist Protestant Church and the Wesleyan Methodist Connection of America are for 1926.

The Methodist body provided more parsonages for their ministers than either of the other two bodies. The number of parsonages provided by the Baptists, Methodists and others were 2,287, 4,465 and 593, respectively.

In conclusion, we find that there are 40,878 Negro churches with 5,768,709 members. There are 37,569 church edifices which are valued at close to 200 million dollars and which are indebted to the amount of about 20 million dollars. The annual expenditure of Negro churches is approximately 30 million dollars.

POPULATION AND PROGRESS OF CHRISTIANITY

POPULATION OF THE WORLD, 1940

(Authorized used: Statesman Yearbook, 1941; Political Handbook of the World, 1941; World Atlas, 1940, Rand McNally.)

Total Population of the World	2,500,000,000
World Population here listed	2,188,510,716
(Other islands, etc) -	61,489,239

North America:

1. United States	131,669,275
2. Alaska	72,524
3. Canada	11,390,000
4. Hawaii	423,332
5. Newfoundland and Labrador	295,000
6. Mexico	19,808,976
7. Canal Zone	51,830
Total for North America	163,710,937

Central America:

1. British Honduras	57,767
2. Costa Rica	639,137
3. El Salvador	1,725,000
4. Guatemala	3,284,269
5. Honduras	1,109,853
6. Nicaragua	1,380,000
7. Panama	661,300
Total for Central America	92,471,281

West Indies:

Bahama Islands	70,000
Barbados	200,000
Bermudas	31,000
Cuba	4,227,587
Dominican Republic	1,620,000
Falkland Islands	2,500

Haiti	2,700,000
Jamaica and dependencies	1,200,000xx
Guadaloupe and dependencies	304,289
Martinique	246,712
St. Pierre and Miquelon	5,000
Leeward Islands	95,000
Puerto Rico	1,600,000
Trinidad	415,000
Virgin Islands	25,000
Windward Islands	90,000

Total for West Indies 12,832,088

South America:

Argentina	13,129,723
Bolivia	3,437,000
Brazil	45,002,176
Chile	4,643,864
Colombia	8,721,752
Ecuador	2,922,000
Guiana	530,607
British	337,813
French	36,906
Dutch	155,888
Paraguay	1,000,000
Peru	7,500,000
Uruguay	2,093,000
Venezuela	3,491,159

Total for South America 92,471,281

Europe:

Albania	1,135,000
Austria	7,009,014
Belgium	8,386,553
Bulgaria	6,734,232
Czechoslovakia	15,250,000
Denmark	3,813,000
Estonia	1,126,000
Finland	3,864,000
France	41,980,000
Germany	78,700,000
Greece	9,200,000
Hungary	10,700,000
Irish Free State	3,000,000
Italy	44,304,000
Latavia (Soviet Russia)	
Lithuania (Soviet Russia)	
Luxembourg (Germany)	297,000
Netherlands	8,780,000
Norway	2,921,000
Poland	35,090,000
Portugal	7,260,000
Roumania (1939)	19,422,600
Russia	189,000,000
Spain	24,600,000

Sweden	6,341,303
Switzerland	4,183,200
United Kingdom	47,098,000
Yugoslavia	15,703,000

Total for Europe 595,897,902

Asia:

Afghanistan	12,000,000
Arabia (seven states)	7,175,000
Ceylon	5,312,548
China (including Manchuria, Mongolia and Tibet)	457,835,475
Hong Kong	1,050,256
India (and dependencies)	390,149,168
French India	300,000
Indo-China	23,853,500
Iraq (Mesopotamia)	4,412,959
Iran (Persia)	15,055,155
Japan	101,663,279
Malay States	1,500,000
Nepal	5,600,000
Netherland East Indies	70,000,000
Palestine	1,501,698
Philippine Islands	16,000,303
Syria and Lebanon	3,800,000
Thailand (Siam)	15,718,000
Turkey	17,869,901

Total for Asia 1,150,797,242

Oceania:

Australia	6,959,913
New Zealand	1,652,384
French Islands	43,608
Society Islands	
Marquezas	
Tuamato	
Leeward	
Gambler	
Austral and Rapa	
New Caledonia	53,245

British Islands:

Fiji Islands	215,379
Gilbert and Ellice Islands	28,265
Fanning Islands	195
Ocean Islands	2,744
Christmas Islands	47
Phoenix Group	62
Solomon Islands	94,000
New Hebrides Islands	45,000
Tonga Islands	32,862
Other (8) British Islands	120,000

Japanese Islands:

Marianne (Ladrone) Islands	45,000
----------------------------------	--------

Caroline Islands _____	30,915
Marshall Islands _____	10,000
United States Islands:	
Guam _____	22,843
Samoan _____	10,055
Wake _____	
Papua (New Guinea) _____	340,000
Total for Oceania _____	9,706,517

Africa:

Morocco _____	6,500,000
Algeria _____	7,234,684
Tunisia _____	2,608,313
French West Africa _____	14,944,830
French Equatorial Africa _____	3,418,066
Togo (Mandated) _____	737,056
Camaroons (Mandated) _____	2,513,517
Madagascar _____	3,757,936
Libia _____	888,401
Italian East Africa (6 states) _____	12,100,000
Egypt _____	15,920,703
Anglo Egyptian Sudan _____	6,342,477
Nigeria _____	20,641,814
Gold Coast _____	3,962,520
Liberia _____	1,500,000
Sierra Leone _____	105,425
Kenya _____	3,500,352
British Somaliland _____	350,000
Uganda _____	3,790,689
Belgian Congo _____	10,328,400
Tanganyika _____	5,250,000
British Camaroons _____	868,637
Togoland _____	391,473
Angola (Portugese) _____	3,500,000
Northern Rhodesia _____	1,366,425
Southern Rhodesia _____	1,500,000
Nyasaland _____	1,700,000
Mozambique (Portuguese) _____	4,995,750
Bechuanaland _____	170,000
Southwest Africa _____	285,000
Union of South Africa _____	9,750,000
Zanzibar _____	250,000
Mauritius Island _____	400,000
Basutoland _____	660,000
Swaziland _____	160,000
Gambia (Portuguese) _____	15,000
Ashanti _____	580,000
Northern Territories _____	800,000
French Somaliland _____	60,000
French Islands (Reunion Mayette and Coniroro) _____	250,000

Total for Africa and Islands _____ 154,237,468

NEW POPULATION STATISTICS OF UNITED STATES

Bureau of the Census Reports for July 1, 1943

Some High Points in the Report

1. Only 25 of the 43 states and the District of Columbia showed decided increases in population between April 1, 1940, and July 1, 1943; while the other 23 states showed decreases for this three-year and three-month period.

2. The Southern and Western States, as a whole, showed approximately 4,000,000 increase for this period; while the Northeastern and North Central States showed about 2,000,000 decrease.

3. The population of the whole United States, meantime, showed a net increase of more than 2,250,000, or 1.7 per cent for this three-year and three-month period. That is to say, the population of the nation as a whole increased about 57,700 per month, or 693,400 per year for this period.

4. The largest decreases, strange enough, occurred in the Northeastern States, where there was a net decrease of 2.9 per cent, or over one million inhabitants in this period.

5. The West showed the greatest gains, having a net increase for this period of 2,264,572, or slightly more than the nation as a whole; whereas the Southern States came second with a net gain of 1,993,184 for this period, or an average gain of 51,107 per month, or 613,284 per year.

Four states, however, led all the rest of the states in the nation—these were Arizona, California, Florida and Nevada. To these must be added the District of Columbia. The inhabitants of this group of states and the District of Columbia actually increased 20 per cent over the 1940 figures, California leading all the rest with a net increase of 1,559,135 for the three years and three months.

Population by States, July 1, 1943

The Bureau of the Census estimates of population of the States as of July 1, 1943, and April 1, 1940, are as follows:

New England States		
	1943	1940
Maine	817,948	847,226
New Hampshire	460,851	491,524
Vermont	327,449	359,231
Massachusetts	4,255,204	4,316,721
Rhode Island	750,688	713,346
Connecticut	1,779,854	1,709,242
Total New England States	8,391,994	8,437,290

Middle Atlantic States

	1943	1940
New York _____	12,858,203	13,479,142
New Jersey _____	4,234,463	4,160,165
Pennsylvania _____	9,465,765	9,900,180
Total Middle Atlantic _____	26,558,431	27,539,487

East North Central States

	1943	1940
Ohio _____	6,886,316	6,907,612
Indiana _____	3,397,918	3,427,796
Illinois _____	7,694,066	7,897,241
Michigan _____	5,422,373	5,256,106
Wisconsin _____	3,010,322	3,137,587
Total North Central _____	26,410,995	26,626,342

West North Central States

	1943	1940
Minnesota _____	2,577,363	2,792,300
Iowa _____	2,318,390	2,538,268
Missouri _____	3,749,819	3,784,664
North Dakota _____	542,652	641,935
South Dakota _____	576,969	642,961
Nebraska _____	1,228,218	1,315,834
Kansas _____	1,780,930	1,801,028
Total West North Central _____	12,774,068	13,516,990

South Atlantic States

	1943	1940
Delaware _____	281,163	266,505
Maryland _____	2,091,720	1,821,244
District of Columbia _____	889,993	633,091
Virginia _____	3,077,497	2,677,773
West Virginia _____	1,754,065	1,901,974
North Carolina _____	3,637,975	2,751,623
South Carolina _____	1,950,802	1,899,804
Georgia _____	3,225,431	3,123,723
Florida _____	2,369,196	1,897,414
Total South Atlantic _____	19,277,842	17,823,151

East South Central States

	1943	1940
Kentucky _____	2,733,090	2,845,627
Tennessee _____	2,958,688	2,951,841
Alabama _____	2,893,979	2,832,961
Mississippi _____	2,231,401	1,283,796
Total East South Central _____	10,817,158	10,814,225

West South Central States

	1943	1940
Arkansas	1,869,509	1,949,387
Louisiana	2,556,175	2,363,840
Oklahoma	2,168,066	2,336,434
Texas	6,970,350	6,414,824
Total West South Central	13,564,100	13,064,485

Mountain States

	1943	1940
Montana	484,281	459,456
Idaho	498,115	524,873
Wyoming	254,390	250,742
Colorado	1,162,853	1,123,296
New Mexico	533,982	531,818
Arizona	702,309	499,261
Utah	633,636	550,310
Nevada	143,318	110,247
Total Mountain States	4,412,884	4,150,003

Pacific States

	1943	1940
Washington	2,032,949	1,736,191
Oregon	1,235,482	1,089,684
California	8,466,522	6,907,387
Total Pacific States	11,734,953	9,733,262
GRAND TOTAL	133,942,425	131,705,235

BAPTIST OF THE WORLD AT LARGE

COUNTRIES	NAME OF ORGANIZATION	Churches	Members	Pastors and Missionaries	Sunday School Pupils
EUROPE:					
Belgium.....	Association of Evangelical Baptist Churches (1927).....(b)	4	158	3	62
Bulgaria.....	Union of Baptist Churches (1908).....(b)	16	676	13	528
Czechoslovakia.....	Czechoslovakia Baptist Union (1896)(b)	29	3,156	34	1,300
Denmark.....	Danish Baptist Union (1865).....(b)	34	6,427	39	6,436
Estonia.....	Estonian Baptist Union (1896).....(b)	51	7,508	45	3,033
Finland.....	Finnish National Conference (1904) (b)	17	940		202
	Swedish-speaking Conference (1873) (b)	30	1,842	23	1,002
France.....	Federation of Evangelical Baptist Churches (1920).....(b)	9	965	9	500
	Other Churches.....(b)	21	635	7	380
Germany.....	Union of Baptist Churches (1849).....(b)	275	72,595	296	27,925
Great Britain and Ireland.....	Baptist Union of Great Britain and Ireland (1831).....(b)	3,247	385,933	2,077	376,979
Holland.....	Baptist Union of Holland (1881).....(b)	37	5,201	25	3,499
	Other Churches.....(b)	5	500	3	250
Hungary.....	Hungarian Baptist Convention (1873)	100	14,329	101	7,454
Italy.....	Baptist Union of Italy (1870).....(b)	43	3,177	38	950
	Other Churches.....(b)	5	450	28	200
Latvia.....	Latvian Baptist Union (1879).....(b)	108	11,931	93	5,557
Lithuania.....	Association of Evangelical Baptist Churches (1933).....(b)	11	547	6	395
	Other Churches.....(b)	2	447	1	250
Norway.....	Norwegian Baptist Conference (1877) (b)	54	7,217	58	3,996
Poland.....	Slavic Baptist Union (1922).....(b)	87	7,015	43	2,408
	German-speaking Baptist Union (1928).....(b)	41	8,339	50	2,693
Portugal.....	Portuguese Baptist Convention (1920) (b)	16	665	12	899
Roumania.....	Baptist Union of Roumania (1921).....(b)	400	62,203	359	17,800
Spain.....	Spanish Baptist Union (1922).....(b)	19	1,054	8	96
	Other Churches.....(b)	17	430	13	800
Sweden.....	Swedish Baptist Mission (1889).....(b)	607	49,090	486	40,069
Switzerland.....	Union of German-speaking Churches (1923).....(b)	8	1,380	10	853
	French-speaking Churches.....(b)	3	350	1	15
U. S. S. R. (Russia).....	Union Baptists and Evangelical Christians.....(c)	(c)	(c)	(c)	(d)
Yugoslavia.....	Yugoslav Baptist Union (1921).....(b)	26	2,177	17	808
Totals for Europe.....		5,322	657,337	3,916	507,841
ASIA: (a) Western and Southern:					
Burma.....	Burma Baptist Convention [A.B.F.M.S. (1813)].....(e)	1,465	132,500	476	32,511
Ceylon.....	Ceylon Baptist Union [B.M.S. (1821)]	28	1,577	13	2,691
India:					
Assam.....	Assam Baptist Convention [A.B.F.M.S. (1836)].....(e)	1,164	68,231	77	42,366
	South Lushai Mission [B.M.S. (1803)].....(e)	116	7,417	8	11,140
Bengal.....	Bengal Baptist Union [B.M.S. (1792)](e)	171	81,176	40	2,679
	Australasian Mission [Australasian F.M. Board and New Zealand B.M.S. (1864)]	110	4,282	62	2,90
Bengal, Bihar, and Orissa.....	Bengal-Orissa Baptist Convention [A.B.F.M.S. (1836)].....(e)	40	2,916	34	2,010
Orissa.....	Orissa Central Church Council [B.M.S. (1822)].....(e)	140	7,767	30	2,659
Madras—Hyderabad.....	Telugu Baptist Convention [A.B.F.M.S. (1836)].....(e)	428	118,620	178	28,193
Madras.....	Northern Circars Baptist Convention [Canadian F.M.B. (1874)]	136	31,778	132	26,620
	Other Churches.....(b)	63	1,672	27	2,902
Bihar and Northern Provinces.....	Delhi-Agra Church Council } (e) Bihar Church Council } (F.M.S.) Sinhla-Kalka Church Council (1811).....(e)	32	2,884	58	1,915
United Provinces.....	Swedish Baptist Mission [Orebro M.S. (1908)].....(b)	6	368	25	245
Palestine (Syria).....	Field of F.M. Board, S.B.C. (1895).....(b)	5	148	12	610

COUNTRIES	NAME OF ORGANIZATION	Churches	Members	Pastors and Missionaries	Sunday School Pupils	
ASIA: Eastern						
China.....	South China Mission [A.B.F.M.S. (1836)] { Hakka Baptist Convention } { Ling Tong Baptist Convention }	16	7,689	46	6,449	
	East China Mission [A.B.F.M.S. (1843)] Chekiang-Shanghai Baptist Con- vention.....	38	4,713	72	2,103	
	West China Mission [A.B.F.M.S. (1889)] West China Baptist Convention.....	4	3,102	40	1,151	
	South China Mission [F.M. Board, S.B.C. (1845)].....	57	26,887	85	2,977	
	Central China Mission [F.M. Board, S.B.C. (1847)].....	18	7,735	80	4,085	
	North China Mission [F.M. Board, S.B.C. (1800)].....	85	19,795	88	4,109	
	Interior China Mission [F.M. Board, S.B.C. (1904)].....	33	5,322	33	3,616	
	Manchuria Mission [F.M. Board, S.B.C. 1937].....	6	2,255	8	517	
	Inter-Provincial Conference [B.M.S. (1877)].....	495	11,468	101	1,995	
	Swedish Mission [Swedish B.M.S. 1899]	12	4,865	29	1,589	
	Swedish Mission [Orebro M.S. (1919)](b)	8	301	11	414	
	Baptist Convention of Japan (1940)					
	East Japan [A.B.F.M.S. (1873)].....	39	4,107	53	5,213	
West Japan [F.M. Board, S.B.C. (1890)].....	25	2,776	26	1,682		
Philippine Islands.....	123	9,437	48	8,178		
Siam.....	1	102	1	62		
Totals for Asia.....		4,959	572,030	1,904	203,585	
AFRICA:						
Cameroons (British Mandate)	German Baptist Mission (1891).....(b)	5	3,888	11	2,688	
Cameroon (French Mandate)						
Congo.....	Mission of B.M.S. (1878).....	577	43,438	46	4,093	
	Mission of A.B.F.M.S. (1884).....	1,570	29,606	138	8,148	
	Mission of Swedish B.M.S. (1892).....(b)	96	35,417	78	3,846	
	Mission of Swedish Orebro M.S. (1917).....(b)	4	1,461	33	4,140	
	Mission of Norwegian B.M.S. (1920).....(b)	6	622	39	2,000	
	Mission of Danish B.M.S. (1927).....(b)	3	1,220	9	485	
	Mission of American Negro Baptists (b)	3	650	6	1,900	
Liberia.....	Nigerian Baptist Convention [F.M. Board].....(b)		800	15	932	
Nigeria.....	S.B.C. (1850).....	211	21,214	79	5,441	
Nyasaland.....	Mission of American Negro Baptists (1896).....(b)	(c)	1,500	4	800	
Sierra Leone, etc.						
Union of South Africa	European Churches [B.U. of South Africa (1877)].....	54	8,034	58	5,029	
	Colored Churches and Missions.....	10	608	(c)	1,728	
	Native Churches: (i) Bantu Church [South African B.M.S.].....	48	7,458	56	3,348	
	(ii) Affiliated with European Churches.....	10	543	3	612	
	(iii) Mission of American Negro Bap- tist (1892).....(b)	4	400	8	321	
	Indian Churches.....	2	765	10	575	
	Totals for Africa.....		2,609	157,634	593	46,086
	AMERICA: North:					
Canada.....	United Baptist Convention of the Mar- itime Provinces of Canada (1846)....	581	61,132	214	29,202	
	Convention of Ontario and Quebec (1899).....	427	55,816	370	43,966	
	Baptist Union of Western Canada (1907)	206	22,457	140	(b)18,471	
United States of America.....	Northern Baptist Convention (1907)...	7,603	1,468,043	7,716	1,039,870	
	Southern Baptist Convention (1845)...	25,018	4,949,174	22,493	3,523,853	
	National Baptist Convention (Negro)...	24,600	4,073,252	28,901	2,588,837	
	Other Churches.....	(c)	(b)530,690	(c)	(c)	
Totals for America: North....		58,435	11,160,564	59,834	7,244,199	

COUNTRIES	NAME OF ORGANIZATION	Churches	Members	Pastors and Missionaries	Sunday School Pupils	
AMERICA: Central and West Indies:						
The Bahamas.....	Bahamas Baptist Union (1892)..... (b)	66	6,000	20	2,100	
	Other Churches..... (b)	88	6,225	200	2,100	
Bermuda.....	Baptist Church..... (b)	1	32	1	60	
Cuba.....	Baptist Convention of Eastern Cuba (1905).....	77	4,025	34	8,576	
	West Cuba Baptist Convention (1905).....	53	4,400	61	543	
Haiti.....	Churches connected with A.B.H.M.S. (1924).....	24	6,733	11	4,000	
	Haiti Mission [Lott Carey B.F.M.S. (1921)].....	7	1,700	2	2,500	
	Mission of Jamaica [B.M.S. (1843)]..... (b)	2	3,595	2	634	
	St. Marc Independent Mission (1850)..... (b)	1	341	1	1,001	
	Other Churches (1928).....	6	464	2	260	
British Honduras.....	British Honduras Baptist Mission (1822)..... (b)	3	218	2	179	
Republic of Honduras.....	Ruatan Baptist Mission (1874)..... (b)	2	80	1	120	
Jamaica, etc.....	Jamaica Baptist Convention (1850).....	209	24,000	56	22,500	
Mexico.....	National Baptist Convention of Mexico (1903)..... (b)	85	7,500	82	6,282	
Nicaragua.....	The Baptist Convention of Nicaragua [A.B.H.M.S. (1937)].....	11	1,259	13	1,888	
Panama.....	Isthmian Baptist Union (1932)..... (b)	8	1,297	3	1,384	
Puerto Rico.....	Baptist Convention of Puerto Rico (1902).....	48	5,036	41	9,416	
Salvador.....	National Baptist Convention of El Salvador (1917).....	19	1,053	10	956	
Trinidad.....	Eaptist Union of Trinidad and Tobago (1854)..... (b)	16	1,269	7	534	
Turks and Caicos Islands.....	Turks and Caicos Islands Baptist Union (1886)..... (b)	13	897	1	1,025	
	Totals for America: Central and West Indies.....	739	76,124	560	70,984	
AMERICA: South:						
Argentina.....	The Baptist Convention of the River Plate Republics (1909).....	65	5,970	75	6,088	
Paraguay.....		Mission of Canadian F.M. Board (1898).....	8	436	17	1,000
Uruguay.....		Brazilian Baptist Convention [F.M. Board, S.B.C. (1882).....	694	53,666	35	50,660
Bolivia.....	Baptist Mission of Rio Grande do Sul [Orebri M.S. (1912)]..... (b)	12	1,667	8	1,423	
Brazil.....	Union of German Baptist Churches (1909)..... (b)	10	1,080	7	1,307	
Chile.....	Evangelical Baptist Union of Chile F.M. Board, S.B.C. (1917).....	40	4,062	35	3,787	
Colombia.....	Baptist Convention..... (b)	2	350	2	96	
Dutch Guiana.....	Paramaribo Baptist Church (1914).....	1	78	1	88	
Peru.....	Mid-Peruvian Mission..... (b)	2	36	3	30	
	Totals for America: South.....	834	67,345	504	64,479	
AUSTRALIA and NEW ZEALAND:						
Australia.....	Baptist Union of Australia (Federation of six Unions, 1926)	130	8,038	117	9,688	
	Baptist Union of Victoria (1862).....	83	5,086	64	7,001	
	Baptist Union of South Australia (1863)..... (b)	125	11,090	123	13,895	
	baptist Union of New South Wales (1868).....	72	4,252	52	4,490	
	Baptist Union of Queensland (1877).....	25	1,463	23	2,176	
	Baptist Union of Western Australia (1897).....	19	1,540	14	1,560	
	Baptist Union of Tasmania.....	81	9,305	73	8,775	
New Zealand.....	Bapust Union of New Zealand (1882).....					
	Totals for Australia and New Zealand.....	535	40,774	466	47,585	

(a) Date of organization in parentheses as (1896). In some cases there was organized work before the present organization was founded.

(b) Figures of last folder.

(c) No statistics available.

(d) Organized religious instruction of children under 18 illegal.

(e) In some cases more than one mission exists in one province and in some cases a mission extends beyond the border of a province.

SUMMARY OF BAPTIST WORLD STATISTICS

(At Close of 1941*)

CONTINENT	Churches	Members	Pastors and Missionaries	Sunday School Pupils
Europe.....	5,335	657,111	3,911	508,076
Asia.....	4,948	585,810	1,895	208,891
Africa.....	2,234	135,841	556	43,146
America:				
North.....	58,330	11,417,963	60,381	7,358,613
Central and West Indies.....	739	76,124	560	70,948
South.....	884	73,274	530	70,554
Australia and New Zealand.....	535	40,774	466	47,585
Totals.....	73,005	12,986,897	68,299	8,607,813

*Because of war conditions, it has been almost impossible to obtain revised statistics from the various countries. The figures given above include such charges as could be made. The detailed statistical report for 1944 will not be issued until later.

100 YEARS' GROWTH OF MAIN NATIONS

	1830	1930
Great Britain.....	24,400,000	107,114,000
France.....	32,500,000	40,745,874
Germany.....	29,700,000	62,348,782
Russia.....	45,600,000	147,013,600
Italy.....	21,210,000	40,796,000
Holland.....	2,600,000	7,416,419
Belgium.....	3,800,000	7,923,077
Turkey.....	9,500,000	13,640,810
United States.....	12,866,020	122,775,046
Roumania.....	1,300,000	17,393,149
Population of World.....	850,000,000	1,932,000,000

Baptist Almanac, 1859, p. 11

Protestants.....	91,675,000
Jews.....	6,216,700
Catholics.....	237,484,960
Mohammedans.....	111,280,000
Heathens.....	816,915,200

PROGRESS OF CHRISTIANITY IN WORLD SINCE 1810

Years	Roman Catholics	Eastern Orthodox	Protestants and Evangelicans	Total Christians	Total Non-Christians	Total World Population
1810				228,000,000	455,000,000	683,000,000
1813				236,000,000	464,000,000	700,000,000
1820				248,000,000	512,000,000	760,000,000
1825	113,270,000	51,230,000	76,975,000	241,475,000	563,525,000	805,000,000
1830						850,000,000
1840				260,000,000	690,000,000	950,000,000
1845				270,000,000	730,000,000	1,000,000,000
1850			86,000,000	275,000,000	835,000,000	1,110,000,000
1860						1,205,000,000
1870						1,375,000,000
1875						1,415,000,000
1880	230,866,533	98,016,000	148,197,000	477,079,533	952,920,467	1,430,000,000
1885						1,490,000,000
1890	254,500,000	106,480,000	173,960,000	534,940,000	1,010,100,000	1,545,000,000
1900	264,505,922	109,147,272	175,355,383	549,017,341	1,050,982,659	1,600,000,000
1907						1,606,000,000
1914						1,700,000,000
1920						
1925	295,000,000	125,000,000	190,000,000	610,000,000	1,202,000,000	1,812,000,000
1927	302,000,000	144,000,000	206,900,000	680,900,000	1,169,000,000	1,850,000,000
1930	297,762,524	127,300,000	133,000,000	558,062,520	1,416,015,005	1,974,077,520
1933	335,482,881	127,300,000	144,100,974	606,883,855	1,405,116,145	2,012,000,000
1943	340,000,000	120,000,000	226,000,000	686,000,000	1,564,000,000	2,250,000,000

NEGROES' POPULATION OF THE SOUTH

States	Total Population 1940	White Population	Negro Population	Percentage Negro Population
Alabama	2,832,961	1,849,097	983,290	34.7%
Arizona	499,261	426,792	14,993	3.0%
Arkansas	1,949,387	1,466,084	482,578	24.8%
District of Columbia	663,091	474,328	187,266	28.2%
Florida	1,897,414	1,381,986	514,198	27.1%
Georgia	3,123,723	2,038,278	1,084,927	34.7%
Illinois (?)	1,559,488	1,500,840	77,489	4.9%
Kentucky	2,845,627	2,831,425	214,031	7.5%
Louisiana	2,363,880	1,511,739	849,303	35.9%
Maryland	1,821,244	1,518,481	301,931	16.6%
Mississippi	2,183,796	1,106,327	1,074,578	49.2%
Missouri	3,784,664	3,539,187	244,386	6.4%
New Mexico	531,818	492,312	4,672	0.9%
North Carolina	3,571,623	2,567,035	981,298	27.5%
Oklahoma	2,336,434	2,104,228	168,849	7.2%
South Carolina	1,899,804	1,804,308	814,164	42.8%
Tennessee	2,915,841	2,406,906	508,736	17.4%
Texas	6,414,824	5,487,545	924,391	14.4%
Virginia	2,677,773	2,015,583	661,449	24.7%
Totals, 1940	45,872,653	35,603,079	10,092,529	22.0%
Totals, 1930	41,561,438	30,939,726	9,517,315	22.9%

Negroes are decreasing in Kentucky and Oklahoma, and having small gains in several other states.

A STUDY OF THE UNCHURCHED FORCES

1941	
UNCHURCHED PEOPLE IN THE WORLD	
Total Population of the World	2,250,000,000
Total church members (all faiths)	686,000,000
Total unchurched in the world	1,564,000,000
UNCHURCHED PEOPLE IN THE UNITED STATES	
Baptists, white and colored	13,314,620
UNCHURCHED PEOPLE IN SOUTHLAND	
Total population (1942)	133,949,529
Total church members, all faiths	67,327,719
Total unchurched, all ages and all races	66,621,810
Unchurched Negroes, all ages	6,400,000
UNCHURCHED PEOPLE IN SOUTHLAND	
Total population in Southland (1942)	46,878,508
Total church members, all faiths	22,053,508
Unchurched—All ages and all races	24,825,000
Unchurched Negroes, all ages	5,778,965
Unchurched whites, all ages	19,046,035

**DIRECTORY OF BAPTIST INSTITUTIONS—THE
EDUCATIONAL INSTITUTIONS**

Colleges

Name	Location	Faculty	Student	Value of Property	Amt. of Endowment	Total Income Last Year
Benedict College.....	Columbia, S. C.....	45	604	\$ 350,000.00	\$ 337,018.05	\$ 181,098.84
Selma University.....	Selma, Ala.....	33	795	108,002.71	83,325.77
Virginia Union Univ.....	Richmond 20, Va.....	37	734	1,660,862.00	786,475.00	214,984.00
Morris College.....	Sumter, S. C.....	32	571	300,000.00	103,900.00
Morehouse College.....	Atlanta, Ga.....	37	577	400,000.00	1,600,000.00	205,000.00
Bishop College.....	Marshall, Tex.....	38	1267	400,000.00	15,000.00	370,000.00
Leland College.....	Baker, La.....	23	412	600,000.00	105,000.00	62,830.52
*Spelman College.....	Atlanta, Ga.....	44	471	923,566.18
Storer College.....	Harpers Ferry, W. Va...	26	152	255,495.57	120,272.01	62,212.16
Arkansas Baptist College.....	Little Rock, Ark.....	21	273	250,000.00	5,000.00	61,000.00
Shaw University.....	Raleigh, N. C.....	60	707	671,255.00	324,430.00	255,374.92
Western College.....	Kansas City, Kans.....	14	162	300,000.00	40,000.00
Butler College.....	Tyler, Texas.....	18	328	200,000.00	80,234.25
		386	5,970	5,923,191.46	3,093,195.06	1,629,970.44

Junior Colleges

Name	Location	Faculty	Student	Value of Property	Amt. of Endowment	Total Income Last Year
*Seneca Jr. College	Seneca, S. C.					
Florida N. & I. College	St. Augustine, Fla.	32	398	\$ 678,706.00		\$ 198,408.34
Conree N. & I. College	Conree, Texas	11	105	250,000.00		20,000.00
*Coleman College	Gibland, La.					
Natchez College	Natchez, Miss.	13	190	250,000.00		65,000.00
Morris Memorial College	Dermott, Ark.	8	106	20,000.00		15,353.43
Friendship Jr. College	Rock Hill, S. C.	15	337	95,000.00		61,879.31
Mather School	Beaufort, S. C.	16	150	250,000.00		58,000.00
Georgia Baptist College	Macon, Ga.	9	195	100,000.00		35,000.00
*Guadalups College	Seguin, Texas					
		88	1,331	1,393,706.00		395,640.08

Theological Colleges

Simmons University	Louisville, Ky.	7	120	\$ 12,000.00	\$ 3,000.00	\$ 19,538.70
American B. T. S.	Nashville, Tenn.	10	94	175,000.00		150,000.00
Virginia Theo. Semi. & College	Lynchburg, Va.	18	100	318,849.08		79,613.10
Union Bapt. Literary & Theo. Semi.	New Orleans, La.	23	141	10,000.00		7,211.22
		58	455	\$ 415,849.08	\$ 3,000.00	\$ 256,363.02

High Schools

*Marion Baptist Academy	Marion, Ala.					
Bethlehem Institute	Monroeville, Ala.	13	320	50,000.00		10,000.00
Hargrave Military Academy	Chatham, Va.	23	310	429,000.00	10,000.00	180,000.00
Bluestone Harmony	Keysville, Va.	8	160	25,000.00		10,000.00
Union Baptist Institute	Athens, Ga.	10	318	35,000.00		15,000.00
		54	1,008	539,000.00	10,000.00	215,000.00

*As of 45.

DIRECTORY OF DENOMINATIONAL PAPERS

Name	Location	Editor	Denomina- tional Control	Circula- tion	Business Manager	Estab- lished
Baptist Leader.....	Alabama.....	W. H. Smith.....	Yes	3,000	W. M. Atmore.....	1880
Baptist Vanguard.....	Arkansas.....	Ulysses Parr.....	Yes	2,700	U. Parr.....	1886
Union.....	South Carolina.....	W. M. Howard.....	No	1,300	W. M. Howard.....	1928
American Baptist.....	Kentucky.....	Yes	5,000	W. H. Balleu.....	1879
*The Negro Star.....	Kansas.....	H. T. Sims.....	Yes	2,498	V. M. & H. T. Sims..	1908
National Baptist Voice.....	Tennessee.....	J. P. Barbour.....	Yes	3,500	J. P. Barbour.....	1915
The Mission Herald.....	Pennsylvania.....	C. C. Adams.....	Yes	6,500	C. C. Adams.....	1896
Christian Review	Pennsylvania.....	Marshall Shepard.....	Yes	20,000	Florence Johnson.....	1913
The Georgia Baptist.....	Georgia.....	Roland Smith.....	Yes	15,000	Roland Smith.....	1880
La. Baptist Advocate.....	Louisiana.....	Gardner Taylor.....	Yes	1,500	James E. Gayle.....	1943
The S. S. Informer.....	Tennessee.....	Chas. L. Dinkins.....	Yes	3,000	A. M. Townsend.....	1934
The Florida Watchman.....	Florida.....	Mattie J. Cohen.....	No	4,000	Mattie J. Cohen.....	1925
Baptist Informer.....	No. Carolina.....	Otis L. Hairston.....	Yes	Thomas Kilgore.....	1911
Ark. Baptist Flashlight.....	Arkansas.....	J. F. Neal.....	Yes	2,000	J. F. Neal.....	1935

*As of 1944.

SUMMARY OF DENOMINATIONAL STATISTICS, 1944-45

States	Churches	No. of Preachers	CHURCH MEMBERSHIP							Value of Church Property
			Total Membership	Total Gain	Total Loss	Baptisms	Schools	Enrollment	Teachers & Officers	
Alabama.....	2,391	2,050	284,735	9,848	3,887	9,425	2,100	89,150	7,569	7,853,684.00
Arizona.....	21	2	1,215	22	13	25	5	339	46	40,106.00
Arkansas.....	1,198	1,255	169,072	7,974	2,027	5,788	1,250	11,600	4,900	3,862,433.00
California.....	144	320	46,539	1,000	433	693	150	12,900	622	1,300,270.00
Connecticut.....	21	48	7,511	97	102	69	11	1,263	95	1,255,270.00
Colorado.....	32	35	3,762	268	24	92	9	2,356	110	120,300.00
Delaware.....	21	25	1,494	70	69	51	10	458	83	747,000.00
District of Columbia.....	177	379	49,219	695	850	427	85	16,298	1,372	3,143,458.00
Florida.....	932	948	145,324	1,561	2,250	2,456	1,002	48,968	4,453	3,607,974.00
Georgia.....	4,028	5,335	589,162	21,454	9,479	22,998	2,800	190,909	16,704	12,765,000.00
Illinois.....	325	430	146,840	3,028	4,048	2,214	327	84,700	7,903	4,000,540.00
Indiana.....	174	369	39,573	513	542	415	165	1,800	171	1,809,664.00
Iowa.....	46	40	5,822	171	16	145	40	8,852	531	224,150.00
Kansas.....	126	138	19,389	766	261	737	150	34,952	3,900	1,826,850.00
Kentucky.....	474	850	100,303	2,997	1,433	2,477	600	43,205	4,861	4,660,184.00
Louisiana.....	1,503	1,086	160,841	7,180	2,176	5,279	1,200	28,490	2,562	3,362,174.00
Maryland.....	109	160	84,430	1,287	729	804	115	15,900	1,431	1,650,045.00
Michigan.....	120	180	51,986	1,140	1,000	1,270	125	10,349	11,350	1,943,755.00
Minnesota.....	2,389	20	1,735	92	25	9,685	4	575	41
Mississippi.....	276	2,088	369,085	11,550	5,262	5,000	2,200	10,349	1,350	3,721,884.00
Missouri.....	12	310	53,401	1,500	743	1,206	250	16,400	1,498	2,423,919.00
New Jersey.....	223	250	53,562	1,811	735	502	186	19,120	1,835	3,558,222.00
New Mexico.....	13	20	541	30	6	13	2	95	16	16,000.00
New York.....	165	250	61,970	1,632	841	1,301	550	20,935	2,909	5,073,435.00
North Carolina.....	1,671	1,450	308,125	6,096	1,141	4,587	1,300	93,500	8,680	5,070,298.00
Ohio.....	383	690	135,413	1,759	1,207	1,351	281	52,782	6,225	2,409,636.00
Oklahoma.....	595	650	57,131	4,030	874	254	250	31,285	3,820	1,455,419.00
Pennsylvania.....	436	450	65,419	2,385	2,684	2,609	300	75,000	4,210	7,811,419.00
South Carolina.....	1,353	1,680	340,765	8,836	5,037	1,900	1,010	125,000	9,852	4,704,947.00
South Dakota.....	3	5	215	20	4	6	9	160	57	157,000.00
Tennessee.....	898	981	163,045	6,108	2,376	2,508	900	52,365	4,712	4,015,979.00
Texas.....	2,222	2,270	349,700	5,996	52,260	5,739	2,150	110,560	11,140	5,965,272.00
Virginia.....	1,610	1,710	364,705	7,218	5,224	7,331	1,500	108,305	4,930	10,676,321.00
West Virginia.....	324	445	34,013	1,257	473	1,116	300	10,303	920	1,602,281.00
Other States.....	36	80	6,877	177	59	138	35	1,530	138	1,351,900.00
Total.....	24,460	26,998	4,122,315	114,725	68,790	104,910	22,512	1,450,924	123,384	113,317,655.00

SUMMARY OF NEGRO BAPTISTS

Summary A—

Total Church Membership	4,122,315
Net Gain in Membership	45,935
Total Number of Churches	24,460
Total Number of Preachers	26,998
Total Number of Sunday Schools	22,512
Total Enrollment of Sunday Schools	1,450,924
Total Number Enrolled in Vacation Bible Schools	7,500
Total Number of Women Missionary Societies	21,169
Total Enrolled in Women Missionary Societies	274,633
Total Number of B. T. U.'s	13,840

Summary B—

Total Value of Church Property includ- ing parsonages	\$113,317,665.00
Average Value of Church property	4,635.00
The average number of members per Church	178
The average number of members per Preacher	158

NUMBER AND CLASSIFICATIONS OF B. T. U.'s

BY STATES

States	Senior Unions	Inter- mediate Unions	Junior Unions	B. A. U. Unions	Totals
Alabama.....	790	269	405	301	1,765
Arkansas.....	478	208	351	82	1,119
Arizona.....	35	5	12	5	52
California.....	153	50	65	24	292
Colorado.....	14	10	18	11	53
District of Columbia.....	109	51	55	38	253
Florida.....	452	236	368	62	1,121
Georgia.....	374	144	236	40	798
Illinois.....	192	70	281	33	576
Indiana.....	97	52	49	20	218
Iowa.....	26	14	21	17	78
Kansas.....	116	54	70	14	252
Kentucky.....	66	43	60	21	190
Louisiana.....	355	292	233	166	1,036
Maryland.....	50	24	41	20	135
Mississippi.....	438	225	225	120	1,008
Michigan.....	109	65	91	36	301
Missouri.....	500	240	296	90	1,126
Nebraska.....	24	18	18	1	61
New Jersey.....	62	37	52	24	176
New York.....	52	37	38	20	149
North Carolina.....	92	42	50	14	198
Ohio.....	80	33	44	21	178
Oklahoma.....	234	130	138	18	520
Pennsylvania.....	61	21	36	20	138
South Carolina.....	45	37	22	26	130
Tennessee.....	384	251	237	109	981
Texas.....	252	108	159	40	559
Virginia.....	43	21	20	15	90
Minnesota.....	34	13	12	13	72
New Mexico.....	21	12	7	2	42
Utah.....	5	6	6	12	30
South Dakota.....	12	6	6		24
Washington.....	7	7	6	8	30
Wisconsin.....	9	8	8	4	29
West Virginia.....	12	8	10	12	44
Bahama Island.....	4	2	2	8	16
Total.....	5,787	2,839	3,658	1,467	13,840

CHURCH MEMBERSHIP AND SUNDAY SCHOOL

ENROLLMENT 32 DENOMINATIONS

Church Body	Church Member- ship	Sunday School Enrollment	S. S. Teachers and Officers
1. African Methodist Episcopal Church.....	650,000	250,000	30,000
2. American Lutheran Church.....	535,283	178,887	12,693
3. Church of God.....	74,497	175,416	10,000
4. Church of the Brethren.....	176,908	73,034	12,569
5. Church of the Nazarene.....	139,442	343,146	20,000
6. United Brethren in Christ.....	439,247	407,945	39,751
7. Congregational Church.....	1,058,807	647,000	84,000
8. Cumberland Presbyterian Church.....	73,759	60,000	5,000
9. Disciples of Christ.....	1,669,222	1,133,175	102,402
10. Evangelical and Reformed Church.....	827,405	509,662	50,966
11. Evangelical Church.....	244,278	89,956	28,568
12. Evangelical Lutheran Augustana & Synod.....	264,958	109,563	14,794
13. Evangelical Lutheran Synod of Mo.....	1,392,337	281,572	29,531
14. Evangelical Mission Covenant of America.....	45,830	51,529	5,826
15. Finnish Evangelical Lutheran..	35,000	4,000	900
16. Five Year Meetings of Friends..	70,000	90,000	6,000
17. Free Methodist Church.....	50,052	118,116	13,356
18. Lutheran Free Church.....	50,000	16,239	2,274
19. The Methodist Church.....	7,691,033	5,732,839	554,942
20. National Baptist Convention...	2,220,000	1,650,000	52,000
21. Northern Baptist Convention...	1,561,289	1,087,763	108,776
22. Norwegian Lutheran Church....	570,330	181,325	22,430
23. Presbyterian Church (U. S. Southern).....	538,000	436,000	35,400
24. Presbyterian Church in U. S. A.	2,013,247	1,453,225	145,322
25. Re-org. Church of Jesus Christ of LDS.....	126,530	30,000	5,000
26. Seven-day Baptist.....	7,758	3,622	320
27. Southern Baptist Convention...	5,104,327	3,590,374	359,000
28. National Baptist Conv., U. S. A.	4,104,327	2,090,819	209,000
29. United Church of Canada.....	716,064	427,321	57,141
30. United Danish Lutheran Church	34,595	10,737	1,785
31. United Lutheran Church.....	1,663,412	820,977	74,766
32. Wesleyan Methodist Church....	27,252	55,419	4,261
Total available figures.....	34,177,702	22,209,691	2,136,973

NUMBER OF MISSIONARY SOCIETIES BY STATES

Alabama	1,755
Arizona	9
Arkansas	930
California	89
Colorado	28
Delaware	32
District of Columbia	68
Georgia	2,730
Illinois	432
Indiana	111
Iowa	2
Kansas	141
Kentucky	735
Louisiana	940
Maryland	120
Massachusetts	28
Michigan	110
Minnesota	29
Mississippi	2,406
Missouri	364
Nebraska	11
New Jersey	204
New York	147
North Carolina	1,526
Ohio	394
Oklahoma	620
Pennsylvania	280
Rhode Island	12
South Carolina	1,600
Tennessee	980
Texas	1,905
Virginia	1,010
Washington	7
West Virginia	394
Wisconsin	9
Total Number	21,169

**MEMBERSHIP OF MISSIONARIES ACCORDING
TO STATES**

Alabama	26,355
Arizona	136
Arkansas	13,926
California	1,190
Colorado	422
Delaware	500
District of Columbia	879
Georgia	40,935
Illinois	6,445
Indiana	1,655
Iowa	25
Kansas	2,105
Kentucky	10,995
Louisiana	14,801
Maryland	1,800
Massachusetts	425
Michigan	1,640
Minnesota	441
Mississippi	36,010
Missouri	5,431
Nebraska	165
New Jersey	3,062
New York	2,291
North Carolina	23,848
Ohio	5,920
Oklahoma	6,310
Pennsylvania	4,225
Rhode Island	185
South Carolina	24,102
Tennessee	14,710
Texas	28,545
Virginia	15,100
Washington	125
West Virginia	5,755
Wisconsin	126
Total	274,633

ONWARD MARCH OF CHRISTIANITY

The following figures furnished by "Christian Herald" are perhaps the most nearly accurate of all the various estimates of the march of Christianity down the centuries.

"We have never seen any estimate claiming to be accurate, showing the aggregate number of Christians in the first century A. D. From that little gathering of 120 souls in Jerusalem (mentioned in Acts), the numbers must have increased rapidly, especially when we take into consideration the activities of the disciples, not only in home but in foreign missionary work. Greece, Italy, and what's now Asia Minor or Anatolia, were visited, and the gospel preached with most encouraging results. There is a tradition that the king of Edessa with all his people accepted Christianity in one day. Many of the larger cities had doubtless a considerable Christian following. Besides these, the gospel spread, during the first century, to the southern shores of the Mediterranean and the islands of that sea. We give below the figures of the growth during the following centuries and the total throughout the world today. It should not be forgotten, however, that there are extensive territories in Asia (including Tibet) and in Central Africa, and part of South America still unreached to say nothing of the Arctic lands. At the close of Jesus' earthly ministry, thousands were then brought into the kingdom and at the end of the first century A. D., the little group in the "upper room" had augmented to half a million, according to the best estimates of experienced writers. In one of his sermons, Doctor Talmage quotes Sharon Turner, an eminent English jurist and historian, and recognized as a man of unusual accuracy—who gives these surprising statistics in regard to the growth of Christianity:

CHRISTIANITY'S GROWTH BY CENTURIES

100 A. D.	500,000
200 A. D.	2,000,000
300 A. D.	5,000,000
400 A. D.	10,000,000
500 A. D.	15,000,000
600 A. D.	20,000,000
700 A. D.	24,000,000
800 A. D.	30,000,000
900 A. D.	40,000,000
1000 A. D.	50,000,000

1100 A. D.	70,000,000
1200 A. D.	80,000,000
1300 A. D.	75,000,000
1400 A. D.	80,000,000
1500 A. D.	100,000,000
1600 A. D.	125,000,000
1700 A. D.	155,000,000
1800 A. D.	200,000,000
1900 A. D.	450,000,000
1925 A. D.	550,000,000
1930 A. D.	600,000,000
1943 A. D.	686,000,000—30%

NON-CHRISTIAN RELIGIONS

Jews	15,600,000
Mohammedans	280,000,000
Animists	160,000,000
Buddhists	170,000,000
Confucianists and Taoists	350,400,000
Hindus	238,000,000
Shintoists	90,000,000
Others	260,000,000
Total Non-Christians	1,564,000,000—70%

FINANCIAL SHEET—STATE BAPTIST CONVENTIONS

1945-1946

Alabama Baptist State Convention	\$ 25,231.20
Regular Arkansas Missionary Baptist Convention	37,872.78
Consolidated Baptist State Convention	45,000.00
Western Baptist State Convention of California	7,050.00
Connecticut Baptist Missionary Union	2,186.00

State—California

Name of Organization—Western Baptist State Convention of California.

President—Rev. W. P. Carter, 1907 10th St., Santa Monica, Calif.

Secretary—J. W. Davis, Monrovia, Calif.

Date of Meeting—August 6, 1946.

Place of Meeting—Los Angeles, Calif.

State—Connecticut

Name of Organization—Connecticut Baptist Missionary Union.

President—Dr. F. W. Jacob, 26 Buckingham St., Bridgeport, Conn.

Secretary—Rev. John B. Pharr, 142 Henry St., New Haven, Conn.

Date of Meeting—May 1-2, 1947.

Place of Meeting—Norwalk, Conn.

State—District of Columbia

Name of Organization—The Baptist Convention of the District of Columbia and Vicinity.

President—Dr. O. C. Bulloch, D.D., Washington, D. C.

Secretary—Rev. William Garfield Opey, 938 Westminister St., N. W., Washington 1, D. C.

Date of Meeting—

Place of Meeting—

State—Florida

Name of Organization—General Missionary State Convention of Florida.

President—Dr. J. N. Stokes, 732 Marion St., Deland, Fla.

Secretary—Rev. R. H. Whitaker, 383 Spruce St., Daytona Beach, Fla.

Date of Meeting—April 8-12, 1947.

Place of Meeting—Tallahassee, Fla.

State—Georgia

Name of Organization—General Missionary Baptist Convention of Georgia.

President—Dr. L. A. Pinkston, 239 Herndon Bldg., Atlanta, Ga.

Secretary—Nathan Roberts, 520 West Henry Street, Savannah, Ga.

Date of Meeting—November 12-15, 1946.

Place of Meeting—Savannah, Ga.

State—Illinois

Name of Organization—Baptist General State Convention of Illinois.

President—Rev. J. L. Horace, 729 Oakwood Blvd., Chicago, Ill.

Secretary—Rev. M. D. Dickson, 804 State St., Peoria, Ill.

Date of Meeting—June 4-7, 1946.

Place of Meeting—

State—Indiana

Name of Organization—General Baptist State Convention of Indiana, Inc.

President—Rev. D. G. Lewis, 1610 Monroe Street, Gary, Indiana.

Secretary—John A. Hall, 219 Boulevard, N. W., Indianapolis, Indiana.

Date of Meeting—July 16-26, 1946.

Place of Meeting—Evansville, Indiana.

State—Iowa

Name of Organization—Iowa, South Dakota and Nebraska Minnesota Association.

President—Rev. G. W. Robinson, 1009 W. 12th St., Des Moines, Iowa.

Secretary—Rev. R. H. Reynolds, 2810 Seward St., Omaha, Neb.

Date of Meeting—August 19-23, 1946.

Place of Meeting—Sioux City, Iowa.

State—Kansas

Name of Organization—Institutional Baptist Convention.

President—Rev. J. W. Hayes, 805 Mathewson St., Wichita, Kan.

Secretary—Rev. James H. Scott, 404 Fourth St., Osawatomie, Kan.

Date of Meeting—Oct. 8-11, 1946.

Place of Meeting—Coffeyville, Kan.

State—Kentucky

Name of Organization—General Association, Colored Baptists in Kentucky.

President—Dr. Wm. H. Ballew, 2222 W. Chestnut St., Louisville, Ky.

Secretary—Rev. G. A. Hampton, 427 W. Chestnut St., Louisville, Ky.

Date of Meeting—August 14-16, 1946.

Place of Meeting—Danville, Ky.

State—Louisiana

Name of Organization—Louisiana Baptist State Convention.

President—Dr. F. M. Boley, 431 W. Madison St., New Orleans, La.

Secretary—Rev. W. H. Buckner, Box 254 Wilson St., Franklin, La.

Place of Meeting—Shreveport, La.

Date of Meeting—July 20-26, 1946.

State—Maryland

Name of Organization—United Baptist Missionary Convention of Maryland.

President—

Secretary—Rev. Ward D. Yerby, 1110 Edmondson Ave., Baltimore, Md.

Date of Meeting—

Place of Meeting—

State—Mississippi

Name of Organization—General Missionary Baptist Convention of Mississippi.

President—Rev. H. H. Humes, 1530 Alexander St., Greenville, Miss.

Secretary—Rev. W. M. Walton, 529 Redbud St., Greenville, Miss.

Date of Meeting—July 21-26, 1946.

Place of Meeting—Cleveland, Miss.

State—Michigan

Name of Organization—Wolverine State Baptist Convention.

President—Rev. E. L. Todd, 4174 - 11th St., Ecore, Mich.

Secretary—Rev. W. R. Mathews, 515 Rosedale St., Detroit, Mich.

Date of Meeting—August 6-9, 1946.

Place of Meeting—Pontiac, Mich.

State—Missouri

Name of Organization—Missouri Baptist State Convention.

President—Rev. R. C. Clopton, 2951 Dayton St., St. Louis, Mo.

Secretary—Rev. C. B. Johnson, 505 Monroe St., Jefferson City, Mo.

Date of Meeting—October 14-18, 1946.

Place of Meeting—St. Louis, Mo.

State—Nebraska

Name of Organization—New Era Baptist State Convention.

President—Rev. F. C. Williams, 1407 N. 22nd St., Omaha, Neb.

Secretary—

Date of Meeting—

Place of Meeting—

State—New Jersey

Name of Organization — Afro-American Baptist State Convention of New Jersey.

President—Dr. C. L. Aiken, 137 Edgewater Ave., Pleasantville, N. J.

Secretary—Rev. Charles P. Harris, 1283 E. 2nd St., Plainfield, N. J.

Date of Meeting—Oct. 10-11, 1946.

Place of Meeting—Asbury Park, N. J.

State—New York

Name of Organization—Colored Baptist Convention of the State of New York.

President—Dr. G. H. Sims, 131 West 131st St., New York, N. Y.

Secretary—Rev. J. Oscar Jones, 160-18-108 Avenue., Jamaica, N. Y.

Date of Meeting—

Place of Meeting—

State—Ohio

Name of Organization—Ohio Baptist General Association.

President—Rev. Chas. H. Crable, 2223 E. 43rd Street, Cleveland, Ohio.

Secretary—Rev. A. W. Jackson, P. O. Box 62, College Hill, Ohio.

Date of Meeting—October 14-18, 1946.

Place of Meeting—Columbus, Ohio.

State—Ohio

Name of Organization—Ohio Baptist State Convention.

President—Dr. J. Franklin Walker, 5240 Bereford Ave., Cincinnati, Ohio.

Secretary—Rev. N. L. Shaw, 2622 E. 63rd St., Cleveland, Ohio.

Date of Meeting—October 15-18, 1946.

Place of Meeting—Dayton, Ohio.

State—Oklahoma

Name of Organization — Oklahoma Missionary Baptist State Convention.

President—Dr. E. W. Perry, 511 E. 3rd St., Oklahoma, Okla.

Secretary—Rev. W. K. Jackson, P. O. Box 831, Ardmore, Okla.

Date of Meeting—

Place of Meeting—

State—South Carolina

Name of Organization—Baptist Educational and Missionary Convention of South Carolina.

President—Dr. H. H. Butler, Drawer 749, Hartsville, S. C.

Secretary—Rev. L. C. Jenkins, 1012 Harden St., Columbia, S. C.

Date of Meeting—May, 1947.

Place of Meeting—Spartanburg, S. C.

State—Tennessee

Name of Organization — Tennessee Baptist Missionary and Educational Convention.

President—Dr. S. A. Owens, 761 Walker Ave., Memphis, Tenn.

Secretary—

Date of Meeting—

Place of Meeting

State—Texas

Name of Organization—Texas Baptist State Convention.

President—Rev. S. T. Alexander, 2705 Flora St., Dallas, Texas.

Secretary—Prof. W. M. Butler, Rt. 3, Box 140, Tyler, Texas.

Date of Meeting—October 15-18, 1946.

Place of Meeting—Tyler, Texas.

State—Texas

Name of Organization—Baptist Missionary and Educational Convention of Texas.

Vice-President—Rev. T. M. Chambers, Sr., Box 902, Dallas, Texas.

Secretary—Prof. M. E. Butler, 1401 W. Grand Ave., Mar-
shall, Texas.

Date of Meeting—October 15-20, 1946.

Place of Meeting—Paris, Texas.

State—Virginia

Name of Organization—Goodwill Baptist Convention of Virginia.

Dr. C. C. Scott, 1005 N. 4th, Richmond, Va.

Secretary—Dr. W. L. Ransome, 1507 Decatur St., Richmond, Va.

Date of Meeting—

Place of Meeting—

State—West Virginia

Name of Organization — West Virginia Baptist State Convention.

President—Rev. S. A. Abrams, E. Beckley, W. Va.

Secretary—Rev. E. T. Browne, 215 Ellis St., Bluefield, W. Va.

Date of Meeting—August 21-23, 1946.

Place of Meeting—Kimball, W. Va.

State—Mississippi

Name of Organization—E. Mississippi State Convention.

President—Rev. I. S. Pettus, 1908 31st Ave., Meridian, Miss.

Secretary—Rev. A. H. Hardaway, RFD 1, Box 6, Meridian, Miss.

Date of Meeting—

Place of Meeting—

State—Pennsylvania

Name of Organization—Pennsylvania State Convention.

President—Rev. L. G. Carr, 5519 W. Grand Ave., Philadelphia, Pa.

Secretary—Rev. T. Robert Washington, 3837 German-
town Ave., Philadelphia, Pa.

Date of Meeting—October, 1946.

Place of Meeting—Philadelphia, Pa.

ATLANTA UNIVERSITY

ATLANTA, GEORGIA

●

- **The Graduate School of Arts and Sciences**
 - **The School of Library Service**
 - **The School of Education**
 - **The School of Business Administration**
 - **The Laboratory Elementary School**
 - **The Summer School**
-

Class A Rating with the Association of Colleges and
Secondary Schools of the Southern States.

Excellent living accommodations. Faculty of highest
calibre. Scholarship aid available.

Inquiries invited. Address the Registrar.

ASSOCIATIONS AND MODERATORS

ASSOCIATIONS	MODERATORS	SECRETARIES
ALABAMA (Continued)		
Union Missionary	Rev. S. Fuller Carlton, Ala.	
Kinterbish	Rev. J. H. Kirkland York, Ala.	
Good Samaritan	Rev. D. G. Garrett Rt. 2 Box 62 Berlin, Ala.	
Mt. Hermon	Rev. L. G. Gibbs Rt. 1 Box 20 Cuba, Ala.	
New Cahaba	Rev. D. V. Jemison 1605 Lapsley St. Selma, Ala.	
Shelby Springs	Rev. R. C. Mixon Shelby, Ala.	
Rushings Springs	Rev. N. C. Shepherd P. O. Box 202 Sylacauga, Ala.	
Early Rose	Rev. W. H. Harrison Sylacauga, Ala.	
Wills Creek	Rev. W. M. Mallory E. Broad St. Gadsden, Ala.	
Friendship Western Union	Rev. G. W. Sims Roanoke, Ala.	
Snow Creek	Rev. R. J. White Anniston, Ala.	
East Alabama Union	Rev. O. P. Page Rt. 2 Box 259 Roanoke, Ala.	
Spring Creek	Rev. J. G. Dudley 915 Tuscaloosa Ave. Gadsden, Ala.	
Morning Star	Rev. S. P. Goggens Cottage Grove, Ala.	
Mt. Carmel	Rev. C. C. Garrett Alpine, Ala.	
Alabama Line	Rev. S. S. Williams	
Mt. Olive Green County	Rev. S. N. Norwood Boligee, Ala.	
Old Land Mark	Rev. H. H. Smith Plateau, Ala.	
Bladen Springs	Rev. J. E. Raine 1628 Duke St. Selma, Ala.	

ASSOCIATIONS AND MODERATORS

ASSOCIATIONS	MODERATORS	SECRETARIES
--------------	------------	-------------

ALABAMA (Continued)

Uniontown District	Rev. W. L. Rhone Box 513 Uniontown, Ala.	
Palestine	Rev. R. F. Hill Demopolis, Ala.	
Dallas County	Rev. T. B. Brown Rehoboth, Ala.	
Free Mission	Rev. J. B. Dixon Box 432 Thomasville, Ala.	
Lawrence County	Rev. B. H. Harris Box 328 Selma, Ala.	
Needham Creek	Rev. L. J. Jackson Forkland, Ala.	
East Perry	Rev. E. B. Radden Marion, Ala.	
North Dallas	Rev. W. S. Smith 1205 Lawrence St. Selma, Ala.	
Eastern Shore	Rev. B. F. Dudley 1310 Basil St. Mobile, Ala.	
Bethlehem	Rev. W. J. Washington Sumterville, Ala.	
Gillfield	Rev. M. C. Barnwell Pushmattaha, Ala.	
East Dallas	Rev. J. E. Todd Berlin, Ala.	
Southwest	Rev. E. A. Hall 127 Harden St. Opp, Ala.	
Hardway	Rev. R. B. Ford Tuskegee Inst., Ala.	
Town Creek	Rev. P. C. Crawford Rt. 2 Box 252 Tuskegee, Ala.	
Southeast	Rev. G. W. Martin P. O. Box 252 Dothan, Ala.	
St. Mary	Rev. I. H. Alford 1201 Adam St. Dothan, Ala.	
Geneva	Rev. Raymond Jones Geneva, Ala.	

ASSOCIATIONS AND MODERATORS

ASSOCIATIONS	MODERATORS	SECRETARIES
--------------	------------	-------------

ALABAMA (Continued)

Banks	Rev. G. W. Manly Banks, Ala.	
Pike Union	Rev. W. M. Baxter Box 66 Troy, Ala.	
Clayton United	Rev. W. T. Floyd Clayton, Ala.	
Union Educational	Rev. W. T. Robin Midway, Ala.	
Chilton County	Rev. James Cooper 11-12 Cahaba St. Birmingham, Ala.	
Autauga County	Rev. B. S. Sanders Route 1 Verbena, Ala.	
Abbeville	Rev. L. R. Warmack Abbeville, Ala.	
Eufaula	Rev. E. L. McElroy Eufaula, Ala.	
Montgomery Antioch	Rev. John McIntosh Montgomery, Ala.	
Old Alabama	Rev. John McIntosh Montgomery, Ala.	
Alabama Middling	Rev. G. W. Williams Rt. 1 Box 40 Hope Hull, Ala.	
Elmore Rehoboth	Rev. G. W. Bradford Rt. 2 Box 73 Elmore, Ala.	
Springhill	Rev. A. H. Hogan Montgomery, Ala.	
Rockdale	Rev. B. S. Robinson 325A Houston St. Montgomery, Ala.	
Galilee	Rev. G. W. Smiley Rt. 1 Box 96 Montgomery, Ala.	
Old Pine Grove	Rev. M. Davee Union Springs, Ala.	
New Pine Grove	Rev. R. O. Johnson Union Springs, Ala.	
East Alabama	Rev. J. C. Cook Rt. 2 Box 218A Pheonix, City, Ala.	

ASSOCIATIONS AND MODERATORS

ASSOCIATIONS	MODERATORS	SECRETARIES
ALABAMA (Continued)		
Ebenezer	Rev. W. D. David Opelika, Ala.	
Auburn	Rev. M. J. Burton P. O. Box 233 Tuskegee, Ala.	
Helicon	Rev. D. B. Bennett Greenville, Ala.	
New Era No. 2	Rev. M. J. Adams 315 Cherry St. Dothan, Ala.	
Perate	Rev. S. W. Penn Union Springs, Ala.	
Mt. Hebron	Rev. H. Harris Union Springs, Ala.	
Mulberry	Rev. G. W. Gray Rt. 2 Box 109 Elba, Ala.	
Salem Enterprise	Rev. T. H. Hill P. O. Box 52 Andalusia, Ala.	
Shady Grove	Rev. E. M. Howard 1725 Lawrence St. Selma, Ala.	
First Mt. Pleasant	Rev. H. P. Richardson Box 200 Demopolis, Ala.	
Hope Hill	Rev. H. P. Richardson Box 200 Demopolis, Ala.	
New Shady Grove	Rev. E. G. Lesure Rt. 3, Box 19 Selma, Ala.	
Hopewell	Rev. W. M. Crews 319 Graham St. Marion, Ala.	
Star of Hope	Rev. H. L. Pearman Coy, Ala.	
Colored Bethlehem	Rev. W. T. Brown Box 367 Monroeville, Ala.	
First Colored Union Baptist	Rev. D. M. James Rt. 1 Box 15 Snow Hill, Ala.	
Mobile Sunlight	Rev. E. A. Palmer Prichard, Ala.	

ASSOCIATIONS AND MODERATORS

ASSOCIATIONS	MODERATORS	SECRETARIES
ALABAMA (Continued)		
Colored Bethel	Rev. M. C. Cleveland 9 Davidson St. Montgomery, Ala.	
Evergreen District	Rev. J. B. Bryant P. O. Box 82 Brewton, Ala.	
East Hope	Rev. J. H. Boykin Minter, Ala	
Second Mt. Pleasant	Rev. W. W. Beckham 911 Small Ave. Selma, Ala.	
East Star	Rev. E. N. Nearer Evergreen, Ala.	
St. Paul	Rev. J. J. Simmons Greensboro, Ala.	
Bethlehem Blount Springs	Rev. C. H. George 121 N. 11th Ave. Birmingham, Ala.	
Bibb County	Rev. D. H. Jones 1126 Escambia St. Birmingham, Ala.	
Canaan Pickensville	Rev. J. A. Johnson Northport, Ala.	
Davis Creek & Holly Springs	Rev. J. S. Lacy Kennedy, Ala.	
East Bound Lebanon	Rev. B. J. Johnson 1510 29th Ave. Tuscaloosa, Ala.	
Jefferson County	Rev. J. S. Saunders 3105 Fairfax Ave. Bessemer, Ala.	
Lebanon	Rev. J. C. Bonner Rt. 2 Box 167A Aliceville, Ala.	
Lillie Star	Rev. A. P. Parker Rt. 1 Box 100 Centerville, Ala.	
Mt. Calvary (Jefferson Co.)	Rev. F. C. Jones 1307 Ave. "M" Ensley, Ala.	
Mt. Calvary (Tuscaloosa)	Rev. F. T. Noland P. O. Box 76 Lellerman, Ala.	
Mt. Pilgrim	Rev. W. M. Atmore 1116 W. 9th St. Birmingham, Ala.	

ASSOCIATIONS AND MODERATORS

ASSOCIATIONS	MODERATORS	SECRETARIES
ALABAMA (Continued)		
Mt. Calvary	Rev. M. W. Bishop West Blocton, Ala.	
Mt. Zion (Young men)	Rev. B. J. Holmes P. O. Box 772 Wylam, Ala.	
Muscle Shoals	Rev. H. Campbell 12 Ave. W. Decatur, Ala.	
New Antioch Beth- hem	Rev. W. J. Long 803 Second Ave. Tuscaloosa, Ala.	
Peace Baptist	Rev. W. A. Davis 1643 16th St. W. Ensley, Ala.	
Belmont District	Rev. R. Ross Rt. 1 Box 51B Coatopa, Ala.	
Bowen East District	Rev. C. L. Williams LaFayette, Ala.	
Pike County Progres- sive District	Rev. M. J. Adams 315 Cherry St. Dothan, Ala.	
Flint River District	Rev. W. A. Wilhite Dansville, Ala.	
Little River District	Rev. Ross Bush Rockville, Ala.	
Mt. Olive Cleburne County District	Rev. R. T. Terrell Heflin, Ala.	
Mt. Zion Coosa Valley District	Rev. William Gaines 100 9th St. Bessemer, Ala.	
North Bound Beth- lehem District	Rev. E. Pruitt Rt. 1 Box 1 Panola, Ala.	
Rural District	Rev. A. Searcy Columbia, Ala.	
Union District	Rev. J. H. Browder 211 Washington St. Greenville, Ala.	
Village Springs Man- ly District	Rev. W. E. Jackson 1806 18th St., S. W. Birmingham, Ala.	
North Mt. Carmel District	Rev. W. H. Thomas 1623 4th Ave. N. Birmingham, Ala.	

ASSOCIATIONS AND MODERATORS

ASSOCIATIONS	MODERATORS	SECRETARIES
ALABAMA (Continued)		
Mt. Moriah	Rev. M. L. Mixon 3220 31st Ave., N. Birmingham, Ala.	
Shiloh District	Rev. J. W. Carter 3617 N. 31st Place Birmingham, Ala.	
Walker Co. District	Rev. G. H. Christian Dora, Ala.	
Reace Baptist	Rev. W. J. Darnell Alexander City, Ala.	
ARKANSAS		
M. C. B. F.	Rev. J. W. Knowles Blytheville, Ark.	Mr. J. H. Mabin Luxora, Ark.
Antioch District	Rev. W. S. Ferguson 801 N. 10th St. Fort Smith, Ark.	Rev. B. L. Wightman 308 South Houston Pl. Russellville, Ark.
Bethlehem District	Rev. J. I. Bell Postelle, Ark.	Rev. E. Briggett Route 2 Holly Grove, Ark.
Central District	Rev. J. H. Neasley Altheimer, Ark.	Rev. T. N. Wolfork England, Ark.
Old Regular District	Rev. S. H. Herne Fordyce, Ark.	Rev. W. M. Mullin Eldorado, Ark.
North Eastern District	Rev. A. L. Perkins 2400 Howard St. Little Rock, Ark.	Bro. O. T. Rhodes Carlisle, Ark.
Cypress Creek	Rev. I. H. McCrary Center Ridge, Ark.	Mr. K. F. Hammond Morrilton, Ark.
Nazarite	Rev. W. E. Walton Little Rock, Ark.	Mr. H. Y. Nickels Keo, Ark.
South East District	Rev. Y. W. Williams Dumas, Ark.	Mr. C. W. Russell Dermott, Ark.
Ozan District	W. E. Edmond Texarkana, Ark.	Rev. C. A. Davis Texarkana, Ark.
Middle Western Dist.	Rev. L. W. Mason Rt. 2 Box 296 Conway, Ark.	Rev. J. C. Thornton aifee, Ark.
Big Creek and Reedville	Rev. N. C. Hopes Box 38 Dumas, Ark.	Bro. James Fuller Star City, Ark.
North Arkansas Dist.	Rev. W. L. James Forrest City, Ark.	Rev. G. W. Dudley Forrest City, Ark.
Progressive District	E. W. Taylor Stuttgart, Ark.	

ASSOCIATIONS AND MODERATORS

ASSOCIATIONS	MODERATORS	SECRETARIES
ARKANSAS		
C. W. R. District	Rev. B. W. Woody Little Rock, Ark.	Rev. J. C. Eckwood Brinkley, Ark.
Chicot District	Rev. E. L. Carter Eudorado, Ark.	Rev. G. K. Littleton Eudorado, Ark.
Watson District	Rev. Jno. Mitchell Dumas, Ark.	Mr. Joe Eldridge Dumas, Ark.
St. Marion District	Rev. W. E. Watson Pine Bluff, Ark.	Prof. P. J. Williams Pine Bluff, Ark.
P. L. M. & D.	Rev. H. R. Stephenson 111 Front St. Helena, Ark.	Rev. H. R. Jelks Memphis, Tenn.
Greater St. Marion	Rev. J. S. Smith Box 492 Pine Bluff, Ark.	Rev. M. P. Tate Pine Bluff, Ark.
Little River	Rev. A. W. Williams Ashdown, Ark.	Rev. D. C. Stromile Ashdown, Ark.
General Union	Rev. M. V. Hudson 1418 Pulaski St. Little Rock, Ark.	
Bradley	Rev. J. E. Tidwell Fordyce, Ark.	
Ouchta	Rev. M. W. Russ Fordyce, Ark.	
Greater P.L.M.& D.	Rev. J. E. Shepherd Marianna, Ark.	
Columbia	Rev. J. F. Russ Magnolia, Ark.	
Lafayette & Miller	Rev. J. H. Wyart Route 1 Hope, Ark.	
Valley	Rev. M. S. Peals Brickey, Ark.	
Great Western	Rev. J. A. Johnson Texarkana, Ark.	
Christian Liberty	Rev. R. J. Johnson Parkin, Ark.	
East Arkansas	Rev. M. Williams Earl, Ark.	
Mt. O. and P.	Rev. M. L. Scott Marked Tree, Ark.	
Southwest	Rev. A. J. Jackson 1103 Laurel St. Texarkana, Ark.	
North Ark. District	Rev. G. W. Dudley Forest City, Ark.	

ASSOCIATIONS AND MODERATORS

ASSOCIATIONS	MODERATORS	SECRETARIES
ARKANSAS (Continued)		
M. V. B. U. -----	Rev. R. G. Gates Blytheville, Ark.	
Jefferson Springs -----	Rev. A. Anderson Hensley, Ark.	
Bradley District -----	Rev. T. M. Garrison Fordyce, Ark.	
Ed. H. and F. Miss. -----	Rev. I. H. Harvey Box 303 Luxora, Ark.	Rev. E. Pitts Dell, Ark.
E. H. F. M. -----	Rev. I. H. Harvey Luxora, Ark.	
CALIFORNIA		
Western Baptist State -----	Rev. C. H. Hampton 2029 W. 29th St. Los Angeles 7, Calif.	Rev. W. P. Carter 1907-20th St. Santa Monica, Calif.
Los Angeles District -----	Rev. G. A. Miller 1186 E. 43rd Pl. Los Angeles 11, Calif.	Rev. J. A. Davis Second Baptist Church Monarovia, Calif.
Tri County District -----	Rev. W. M. Thomas 2911-9th St. Riverside, Calif.	
Southwest District -----	Rev. David Campbell Box 287 Blythe, Calif.	Mrs. E. L. Hampt 1581½ W. 36 Pl. Los Angeles 7, Calif.
FLORIDA		
Second Bethlehem -----	Rev. T. M. Magwood 215 E. Street, Leesburg, Fla.	
Florida East Coast -----	Rev. J. W. Drake 3rd Ave. Miami, Fla.	Rev. J. C. Coleman 2057 N. W. 6th Miami, Fla.
First Bethlehem -----	Rev. W. M. Burns Tallahassee, Fla.	
Union St. James -----	Rev. L. M. Mathis 318 10th St. Palatka, Fla.	
Jerusalem -----	Rev. R. M. Latimore 804 S. Porter St. Gainesville, Fla.	
First Central -----	Rev. F. W. Williams Branford, Fla.	
Suwanee River ----- Progressive	Rev. A. L. Jordan 920 Columbia Lane Gainesville, Fla.	

ASSOCIATIONS AND MODERATORS

ASSOCIATIONS	MODERATORS	SECRETARIES
FLORIDA (Continued)		
First West Florida	—	
Second Central	Rev. E. Tinsley Rt. 2, Box 1 Greenville, Fla.	
Emanuel	Rev. B. W. Williams 915 W. 22nd St. Jacksonville, Fla.	
Atlantic Coast	Rev. S. A. Sampson 1425 N. W. 1st St. Miami, Fla.	
Bethel	—	
Mt. Zion N. E. Coast	Rev. Jas. Massey Ormond, Fla.	
New Light	Rev. J. B. Byrd	
First South	Rev. I. C. Nimmons	
Seaboard	Rev. John I. Ross 1475 N. W. 5th Place Miami, Fla.	
St. John River	Rev. M. B. Britton St. Augustine, Fla.	
West Coast	Rev. A. C. Crooms P. O. Box 4103 Sta. A Orlando, Fla.	
GEORGIA		
Antioch	Rev. D. S. Scott Route 1 Leesburg, Ga.	
Atlanta	Rev. M. L. King 193 Boulevard, N. E. Atlanta, Ga.	Rev. R. A. Graves Atlanta, Ga.
Benevolence	Rev. S. F. Smith Edison, Ga.	
Bethesda	Rev. S. M. Holton Andersonville, Ga.	Mr. R. C. Culbreth Albany, Ga.
Berean	Rev. E. D. Davis 931 37th St Savannah, Ga.	
Blue Springs	Rev. S. H. Jordan East Albany, Ga.	
Buckeye	Rev. W. P. Parker Putney, Ga.	
Building Union	Rev. C. H. Dumas Vidalia, Ga.	
Cabin Creek	Rev. A. S. Shaw Cordele, Ga.	

ASSOCIATIONS AND MODERATORS

ASSOCIATIONS	MODERATORS	SECRETARIES
GEORGIA (Continued)		
Gethsemane	Rev. M. J. Harris Woodbine, Ga.	
Camilla	Rev. O. J. Moore Griffin, Ga.	I. S. Mack 1023 Ashley Grove, S. W. Atlanta, Ga.
Carrollton Union	Rev. R. C. Crouch Moultrie, Ga.	
Cane Creek	Rev. F. M. Hutchinson 111 Ozone St. Atlanta, Ga.	
Central	Rev. E. M. Johnson 250 Burbank Dr. Atlanta, Ga.	
Central Ga.	Rev. W. M. Thomas Smithville, Ga.	
Chattahoochee River	Rev. J. H. Bankston Ft. Gaines, Ga.	C. M. Montgomery Coleman, Ga.
Columbus	Rev. W. A. Reid 622 2nd Ave. Columbus, Ga.	
Covenant	Rev. J. J. Johnson Buena Vista, Ga.	
Educational		
Eureka	Rev. R. B. Brown 107 Poplar Street Savannah, Ga.	
First North Ga.	Rev. S. M. Ferguson Summerville, Ga.	
Flint River	Rev. J. L. Hoffman Donaldsonville, Ga.	
Frank Cooper		
Fowltown		
Freewill Aid	Rev. G. A. Turman Lincolnton, Ga.	
Friendship	Rev. B. E. Vicks Cuthbert, Ga.	
Friendship	Rev. L. W. Whipple Hawkinsville, Ga.	
Georgia Union	Rev. B. Gordon Unadilla, Ga.	Mr. A. W. Glover Pineview, Ga.
Georgia Baptist	Rev. E. D. White Atlanta, Ga.	
Great Eastern	Rev. J. L. Lowe Leesburg, Ga.	

ASSOCIATIONS AND MODERATORS

ASSOCIATIONS	MODERATORS	SECRETARIES
GEORGIA (Continued)		
Gum Creek	Rev. G. P. Haynes 801 River Rd. Albany, Ga.	Mr. D. W. Brown Route 4 Cordele, Ga.
Georgia Central		
Harrison Union- Hancock	Rev. W. Reese Tennille, Ga.	
Home Mission	Rev. W. M. Dominie Camilla, Ga.	
Home Mission Union	Rev. W. M. Printer Route 1 Leary, Ga.	
Hopewell	S. S. Kelley 32 Blvd., S. E. Atlanta, Ga.	D. G. Ebster 239 White St. Decatur, Ga.
Jeruel	Rev. J. R. Barnett 945 Palmetto Ave. Atlanta, Ga.	Rev. R. N. Hall Athens, Ga.
Kiokee	Rev. E. R. Riley Albany, Ga.	
Hopewell		
Kennesaw	Rev. W. H. Ferrell 48 Ross St. Rome, Ga.	Pro. B. F. Graves Atlanta, Ga.
Little River	Rev. Wm. Miller Sparks, Ga.	
Madison	Rev. R. G. Cash Madison, Ga.	
Middle Ga.	Rev. G. G. Taylor Perry, Ga.	
Middle Ga. Orthodox	Rev. J. T. Saxon 220 Norris St. Macon, Ga.	
Montgomery	Rev. Z. O. Gray Glenwood, Ga.	
Mt. Calvary	Rev. J. H. Carter 2311 Buena Vista Rd. Columbus, Ga.	Mr. W. F. Rivers Columbus, Ga.
Mt. Calvary Prog.		
Mt. Calvary	Rev. A. W. Vincent Martinez, Ga.	
Mt. Herman		
Mt. Carmel	Rev. W. W. Walker Woodbury, Ga.	

ASSOCIATIONS AND MODERATORS

ASSOCIATIONS	MODERATORS	SECRETARIES
GEORGIA (Continued)		
Mt. Moriah	M. L. George Omaha, Ga.	Mr. C. A. Dozier Lumpkin, Ga.
Mt. Olive	P. C. Daniel Savannah, Ga.	
Mt. Olive	Rev. D. C. Clark Sylvester, Ga.	
Mt. Pleasant	Rev. J. J. King Forsyth, Ga.	
Mt. Pleasant Calvary	Rev. J. L. Henley Vidalia, Ga.	
Mt. Tabor	Rev. A. R. Curry Townsend, Ga.	W. C. Shipman McIntosh, Ga.
Mt. Zion	Rev. J. H. Baines Thomasville, Ga.	Mr. C. W. Willis Cairo, Ga.
Mt. Zion Western	Rev. C. J. Gore Richland, Ga.	
Nashville	Rev. J. C. Chatman Adel, Ga.	Mr. L. Sherman Sparks, Ga.
New Grady	Rev. R. D. Wynn	
New Home	Rev. D. E. Jennings 1516 Holly Street Augusta, Ga.	
New Hope	Rev. A. Bell 80 Randolph Street Atlanta, Ga.	Mr. W. M. Lewis 81 Howell St. Atlanta, Ga.
New Hope	Rev. W. E. Atkins Route 2 Colquitt, Ga.	
New Macedonia	Rev. R. B. Thompson 970 Smith St., S. W. Atlanta, Ga.	
New Proviso		
New Zion	Rev. J. H. Lockett 529 Dunbar Street Atlanta, Ga.	J. S. Dickerson Atlanta, Ga.
New Towaliga	Rev. J. H. Kurt 501 Center Street Monroe, Ga.	
Newton	Rev. C. F. Neals Pelham, Ga.	
Noah's Ebenezer	Rev. M. R. Frye Midville, Ga.	
No. Carolina-Georgia	Rev. Andy Wiley Murphy, N. C.	

ASSOCIATIONS AND MODERATORS

ASSOCIATIONS	MODERATORS	SECRETARIES
GEORGIA (Continued)		
N. Georgia Central	Rev. L. J. Vaughn 228 Pennington St. Rome, Ga	Mr. A. P. Perry Calhoun, Ga
Western Union	Rev. W. C. Adams Hogansville, Ga.	C. H. Kelly LaGrange, Ga.
North Western No. 2	Rev. H. Vincent Statham, Ga	J. S. L. Morrow Bethlehem, Ga.
North Western No. 1		
Ocmulgee	Rev. C. N. Campbell Mystic, Ga.	Mr. W. L. King Fitzgerald, Ga.
Oconee-Zion	Rev. H. A. McCloud Vidalia, Ga.	
Pilgram	Rev. J. W. Thomas Guyton, Ga.	
Progressive	Rev. G. W. Pollhill Cordele, Ga.	
Pleasant Hope	Rev. W. A. Atkins Colquitt, Ga.	
Quarterman		
Queen Victory	Rev. W. M. Hall 529 Clinton Street Macon, Ga.	
Rehoboth	Rev. J. G. Thomas 472 Broad Street Macon, Ga.	Rev. T. C. Kinchen Dublin, Ga.
Rosemont	Rev. G. W. Jones 1109 8th Street Augusta, Ga.	
St. John	Rev. E. Z. Rozelle Macon, Ga.	
St. Luke	Rev. W. M. Phillips	
St. Mary	Rev. Larkin Walker Albany, Ga	
St. Paul	Rev. C. T. Anderson Bridgeboro, Ga.	
Second Flint River	Rev. William Stanback Junction City, Ga.	
Second Middle Ga.	Rev. H. Hunter Washington, Ga.	
Second Mt. Zion	Rev. G. H. Taylor Girard, Ga.	
Second Rehoboth	Rev. J. M. Benton Waycross, Ga.	

ASSOCIATIONS AND MODERATORS

ASSOCIATIONS	MODERATORS	SECRETARIES
GEORGIA (Continued)		
Second Shiloh	Rev. W. M. Hubert Manfield	Mr. E. P. Denton Crawfordville, Ga.
Shiloh	Rev. W. M. Jackson Atlanta, Ga.	Mr. R. G. Cash Madison, Ga.
Shiloh Union	Rev. W. D Sparks Shiloh, Ga.	
South Georgia	Rev. S. C. Coachman Nashville, Ga.	
Southwestern Union	Rev. A. H Turner Glenn, Ga	
Southwestern	Rev. A. J. Allen Cuthbert, Ga.	
Spring Creek	Rev. C. H. Holmes Colquitt, Ga.	
Star Light	Rev. B. H. Driskell Dublin, Ga.	
Tatnall	Rev. T. J. Lynch Daisy, Ga.	
Third Shiloh	Rev. E. R. McLendon Washington, Ga.	Mr. L. S. Pelott Rayle, Ga.
Thomasville	Rev. S. S. Broadnax Thomasville, Ga.	
Union	Rev. G. G. Taylor Perry, Ga.	
Union	Rev. W. M. Dansby Waynesville, Ga.	Mr. R. C. Wilson Toccoa, Ga.
Union Grove	Rev. T. P. Peterson Americus, Ga.	
Union Mid. River	Rev. W. H. Perry 2301 9th Ave., S. W. Birmingham, Ala.	Mr. C. S. Anderson Dahlonega, Ga.
Walker	Rev. S. Campbell Midville, Ga.	
Waycross-Satilla	Rev. W. B. Golden 1409 Thomas Street Waycross, Ga.	Mr. W. H. Bradley Box 328 Brunswick, Ga.
Western Union	Mr. W. H. Bradley Brunswick, Ga.	
Willochoochee		
Young Men Hopewell	Rev. G. W. Jackson Albany, Ga.	
Yellow River	Rev. A. J. Clark Route Covington, Ga.	
Zion	Rev. A. R. Curry Townsend, Ga.	

ASSOCIATIONS AND MODERATORS

ASSOCIATIONS	MODERATORS	SECRETARIES
GEORGIA (Continued)		
Zion Hope	Rev. John Howard Abbeville, Ga.	
Builders Union	Rev. A. S. Shaw Cordele, Ga.	
Friendship	Rev. M. Hooks Fitzgerald, Ga.	Mr. A. Lowery P. O. Box 43 De Sota, Ga.
Friendship	Rev. P. H. Head East Point, Ga.	
ILLINOIS		
Bethlehem	Dr. I. A. Thomas Box 248 Evanston, Ill.	
New Salem	Rev. J. A. Lampley 1854 Tudor Ave. St. Louis	Rev. L. A. Brown 1926 Bond Ave. St. Louis
New Era	Rev. J. H. Gibson 4728 Forestville Ave. Chicago, Ill.	Rev. J. M. Stone
Union	Rev. W. M. A. Johnson 111 E.—60th St. Chicago, Ill.	Rev. T. B. Chapman 6543 Vernon Ave. Chicago
Zion	Rev. L. Thompson Box 583 Mounds, Ill.	Rev. Thomas Ayler
Shiloh	Rev. B. F. Laden 3709 So. State St. Chicago, Ill.	Rev. M. W. Wheeler 3122 Wabash Ave. Chicago, Ill.
Brotherhood	Rev. C. J. Rodgers 3837 LaFayette St. Chicago, Ill.	Rev. L. W. Alexander
Central	Rev. S. A. Miller 401 Merriman St. Peoria, Ill.	Mrs. Lucy Campbell 333 Center St. Peoria, Ill.
Nazarene	Rev. A. F. Smith 3819 SO. State St. Chicago, Ill.	Rev. F. Manning 394 Federal St. Chicago, Ill.
Wood River	Rev. B. N. Murrell 11408 S. Loomis St. Chicago, Ill.	
KANSAS		
Kaw Valley District	Rev. J. A. Moore 1964 Thompson St. Kansas City, Kansas	Rev. I. H. Henderson 8th and Oakland Kansas City, Kansas

ASSOCIATIONS AND MODERATORS

ASSOCIATIONS	MODERATORS	SECRETARIES
KANSAS (Continued)		
Southern District	Rev. A. L. Gardner 615 S. 23rd St. Parsons, Kansas	Rev. Alonzo Fitch 514 E. 6th St. Coffeyville, Kansas
Southwestern District	Rev. N. J. Stokes 111, 8th St. Pratt, Kansas	Mrs. M. L. Strother 1035 N. Mosley Wichita, Kansas
Smoky Hill District	Rev. G. T. Raimey 920 N. Clay St. Junction City, Kansas	Mrs. Elsie Shook 1015 Mulberry Abilene, Kansas
Neosho Valley Dist.	Rev. J. A. Rucker Paola, Kansas	Mrs. J. B. Blackwell 211 N. Malcolm Chanute, Kansas
Northeastern District	Rev. W. F. Beatty 901 Division St. Atchison, Kansas	Mrs. L. B. White 215 Cleveland Terrace Leavenworth, Kansas
INDIANA		
Northern Indiana District	Rev. D. G. Lewis 1610 Monroe St. Gary, Indiana	Rev. W. E. Hausey 125 South Liberty St. South Bend, Indiana
The Union District	Rev. John A. Hall 219 North West St. Indianapolis, Indiana	Mr. E. W. Winfield 1036 N. West St. Indianapolis, Indiana
KENTUCKY		
Central	Rev. H. C. Owens Louisville, Ky.	Rev. R. D. Merri- weather Louisville, Ky.
Howard Creek	Rev. T. H. Smith 571 Maryland St. Lexington, Ky.	Rev. J. E. Bowen Mt. Sterling, Ky.
Consolidated	Rev. H. E. Nutter Lexington, Ky.	Rev. E. H. Allen Georgetown, Ky.
First	Rev. J. R. Hunt 394 E. 8th Street Hopkinsville 4, Ky.	Rev. E. Pullen Henderson, Ky.
Zion	Rev. C. Willis Columbia, Ky.	Prof. R. R. Ewing Columbia, Ky.
Elkhorn and Sandy Valley	Rev. H. Y. Hinton Fleming, Ky.	Sister M. C. Price Dunham, Ky.
Mt. Calvary	Rev. J. M. Watkins Hardinsburgh, Ky.	Rev. D. N. Beauchamp Louisville, Ky.
Harlan Co. Progressive	Rev. J. B. Scott Crummies, Ky.	Rev. J. M. McKennely Harlan, Ky.
Pond Creek	Rev. F. L. Reid Williamson, W. Va.	Rev. R. L. Wagner Labato, W. Va.

ASSOCIATIONS AND MODERATORS

ASSOCIATIONS	MODERATORS	SECRETARIES
--------------	------------	-------------

KENTUCKY (Continued)

Union	Rev. R. H. Johnson Bowling Green, Ky.	Rev. B. H. Mills Ellensville, Ky.
London	Rev. J. Neil Richmond, Ky.	Rev. Frank A. Smith London, Ky.
Mt. Pleasant	Rev. T. H. Bennett Richmond, Ky.	Rev. E. W. Mason Richmond, Ky.
W. Ky. Green Valley	Rev. O. C. Reynolds McKenzie, Tenn.	
Green River Valley	Rev. W. F. Fisher Drakesboro, Ky.	Prof. S. L. Barker Owensboro, Ky.
Hazard	Rev. C. H. Harrington Hazard, Ky.	Rev. E. E. Williams Hazard, Ky.
Little River and Cumberland Valley	Rev. E. E. Hopson Hopkinsville, Ky.	Rev. R. D. Ladd Hopkinsville, Ky.
South	Rev. R. L. Childs Lancaster, Ky.	Rev. Wm. H. Mills, Jr. Somerset, Ky.

LOUISIANA

Liberty Hill Baptist	Rev. S. L. Holland Simmsboro, La.	
Louisiana Freedman Missionary Baptist General	Rev. C. Charles Taylor 3915 Thalia St. New Orleans, La.	
Ideal Missionary Baptist	Rev. Abraham L. Davis, Jr. 2016 Second Street New Orleans, La.	
Southern District	Rev. J. Walters 1422 Delery St. New Orleans, La.	
Newfoundland Mis- sionary Baptist	Rev. A. Morella 719 White Street New Orleans, La.	
Westside Missionary Baptist	Rev. G. W. Williams Marrero, La.	
New Era Missionary Baptist	Rev. A. C. Moore 840 Sixth Street New Orleans, La.	
Rising Sun Mission- ary Baptist	Rev. I. Vincent 6337 N. Robertson, St. New Orleans, La.	
Universal	Rev. F. F. Franklin 4132 N. Gen. Ogden St. New Orleans, La.	
.....	Rev. M. W. Rivers 930 Felicity St. New Orleans, La.	

ASSOCIATIONS AND MODERATORS

ASSOCIATIONS	MODERATORS	SECRETARIES
LOUISIANA (Continued)		
New Hope Baptist	Rev. W. M. Wyatt Vernon, La.	
B. B. D. O. Baptist	Rev. J. Numan 108 N. 7th St. Monroe, La.	
Liberty Hill Baptist	Rev. P. B. Lewis Monroe, La.	
12th District Baptist	Rev. W. M. Gomez Box 413 Many, La.	
Morehouse District Baptist	Rev. J. H. Allen Box 2148 Monroe, La.	
14th District Baptist	Rev. J. B. Huey Box 325 Minden, La.	
Friendship Missionary and Educational	Rev. J. H. Tims Box 493 Homer, La.	
Little River Baptist	Rev. G. L. Washington Box 73 Homer, La.	
Spring Ville Missionary	Rev. D. L. Scott Gibsland, La.	
Bossier Educational Baptist	Rev. R. D. Spikes 1045 Christian St Shrereport, La.	
Mt. Olive Union Baptist	Rev. Wash Adams Iberville, La.	
North West Baptist	Rev. R. B. Murray Rt. 1, Box 66 Grand Cane, La.	
Palestine Baptist	Rev. D. Woods Box 265 Vidalia, La.	
Union County	Rev. John E. Ross Rt. 2 Box 132 Marion, La.	
West Carroll Baptist	Rev. L. S. Briggs Oak Grove, La.	
Union 6th District	Rev. F. M. Boley 431 W. Madison St. New Iberia, La.	
Ideal and Missionary and Educational	Rev. A. L. Davis, Jr. 2016 Second St. New Orleans, La.	

ASSOCIATIONS AND MODERATORS

ASSOCIATIONS	MODERATORS	SECRETARIES
--------------	------------	-------------

LOUISIANA (Continued)

1st. District	Rev. B. Jolicour	
Missionary	1305 Gordon St.	
	New Orleans, La.	
10th District	Rev. W. S. Robinson	
	Bastrop, La.	
13th District	Rev. C. H. Walker	
	1418 Portland Avenue	
	Monroe, La	
7th District	Rev. A. J. May	
	Abberville, La.	
Calcasieu Union	Rev. N. P. Jones	
Baptist	216 Blake St.	
	Lake Charles, La.	
9th District	Rev. S. A. Cooper	
	Lake Providence, La.	
Gumspring Baptist	Rev. W. M. Rutland	
	Dubach, La.	
Second District	Rev. A. L. Smith	
	Box 61	
	Gonzales, La.	
N. Louisiana Old	Rev. F. J. Jackson	
Line Baptist	Box 861	
	Monroe, La.	
Franklin Parish	Rev. M. C. Cooper	
Baptist	Wisner, La.	
Louisiana South	Rev. D. L. Brown	
Baptist	1139 Willow St.	
	Houma, La.	

MICHIGAN

Metropolitan District	Rev. S. D. Ross	Rev. W. S. Colvin
	584 Arden Park	3708 Charlesvoix St.
	Detroit, Mich.	Detroit, Mich.
Michigan District	Rev. J. S. Williams	Rev. U. S. Goldsby
	3618 Chene St.	7515 Richmond St.
	Detroit, Mich.	Detroit, Mich.
Union District	Rev. S. J. Glover	Rev. J. E. Reed
	1513 Larned St.	3609 Garfield
	Detroit, Mich.	Detroit, Mich.
Chain Lake District	Rev. E. L. Todd	Rev. A. C. Keith
	4174-11th St	Grand Rapids, Mich.
	Ecorse, Mich.	

MISSISSIPPI

Yazoo County Land	Rev. M. C. Sanders	Bro. G. G. White
Mark	Rt. 2 Box 204	
	Yazoo City, Miss.	

ASSOCIATIONS AND MODERATORS

ASSOCIATIONS	MODERATORS	SECRETARIES
MISSISSIPPI (Continued)		
Quitman County	Rev. T. W. Laundrews Marks, Miss.	Rev. W H Collins Marks, Miss.
Coahoma County Educational	Rev. E. D. Payne 1214 Franklin Curulhersville, Miss.	Rev. A. D. Banks Lyons, Miss.
Pal Alto District	306 Dison St. Memphis, Tenn.	Bro. L. M. Grace
Bolivar County	Rev. H. G. Gardner Box 488 Shaw, Miss.	Rev. H. C. Cherry Box 123 Benoit, Miss.
Antioch Missionary	Rev. C. R. Anderson 7½ E. Franklin St. Natchez, Miss.	Rev. E. W. Rhone 2 Marion Ave. Natchez, Miss.
Jefferson County	Rev. W. N. Tyler Carmousburg, Miss.	Rev. A. L. Jones
Hinds County	Rev. R. W. West Bolton, Miss.	Rev. A. G. Gates Edwards, Miss.
Clairborne County	Rev. A. L. Martin Port Gipson, Miss.	Rev. E. E. Spencer Port Gipson, Miss.
Humphrey's County	Rev. Jas. A. G. Johnson 204 Fisk Ave. Belzoni, Miss.	Rev. J. E. Johnson 204 Fisk Ave. Belzoni, Miss.
Coahoma County	Rev. R. C. Gallion 225 Fourth St. Clarksdale, Miss.	Rev. Z. P. Pittman 1300 Lincoln St. Clarksdale, Miss.
Sunflower County Baptist	Rev. L. R. Chandler P. O. Box 310 Inverness, Miss.	Rev. N. A. Brantley Indianola, Miss.
Copiah County	Rev. E. G. Robinson P. O. Box 331 Crystal Springs, Miss.	Bro. B. F. Alexander
Grenada District	Vaiden, Miss.	Rev. W. C. Clay
Copiah County Bresh- er-Creek New Hope	Rev. D. D. Smith	
Yalobusha County Mt. Mariah	Rev. W. H. Turner Sardis	
Tunica County	Rev. W. M. Porter Tunica, Miss.	Bro. M. Wallace Tunica, Miss.
Holmes County Baptist	Rev. C. C. Crafton Tchula, Miss.	Bro. W. W. Adams Tchula, Miss.
Wilkinson County	Rev. R. T. Tyson Woodville, Miss	J. W. Dennis Woodville, Miss.
Zion District	Rev. A. L. Hill Winona, Miss.	Bro. J. N. Smott Winona, Miss.

ASSOCIATIONS AND MODERATORS

ASSOCIATIONS	MODERATORS	SECRETARIES
<i>MISSISSIPPI (Continued)</i>		
Issaquena County	Rev. I. W. Dorsey Fitlers, Miss.	Prof. C. F. Woods Fitlers, Miss.
Madison County	Rev. W. L. Jones 427 Liberty St. Carmon, Miss.	Rev. J. H. Franklin Carmon, Miss.
Sunflower County General	Rev. R. W. Ford Ruleville, Miss.	Rev. L. F. Johnson Friars Point, Miss.
Panola County	Rev. A. M. Bayles Sardis, Miss.	Bro. A. L. Cosby Sardis, Miss.
Warren County	Rev. E. D. Straughter East Avenue Vicksburg, Miss.	Rev. F. B. Black Rt. 2 Box 339-D Vicksburg, Miss.
J. M. B.	Rev. J. H. Taylor 176 Roosevelt St. Jackson, Miss.	Rev. D. D. Smith
Washington County	Rev. W. M. Walton 529 Redbud St. Greenville, Miss.	Rev. S. S. Imes Hollandale, Miss.
J. M. B.	Rev. W. P. Whitfield 709 Pondexter St. Jackson, Miss.	Mr. W. B. Burns Jackson, Miss.
Tallahatchie County	Rev. S. M. Harts Tutwiler, Miss.	Rev. W. H. Wallace Tutwiler, Miss.
St. John District	Rev. J. W. Terrell 112 Young St. Greenwood, Miss.	Rev. C. H. Jackson 316 Scott St. Greenville, Miss.
Swan Lake M. B.	Rev. L. H. Hill Box 181 Marks, Miss.	Bro. Douglass Marks, Miss.
Sharkey County	Rev. G. P. Phillip Rolling Fork, Miss.	Rev. H. C. Hicks Rolling Fork, Miss.
Leflore County	Rev. A. W. Moore Box 107 E. Percy, St. Greenwood, Miss.	Bro. George Kelly Greenwood, Miss.
Lincoln County	Rev. Z. M. Winder Jackson, Miss.	
Lebenon District	Rev. J. W. Gayden P. O. Box 804 Greenwood, Miss.	Rev. W. E. Smith Lexington, Miss.
Atla County Mt Hope	Rev. R. C. Sallis Kosciusko, Miss.	Rev. F. W. Wingard Kosciusko, Miss.
Mt. Hope	Rev. B. J. Roby Kosciusko, Miss.	F. W. Wingo Kosciusko, Miss.
MISSOURI		
New Era	Rev. C. S. Stamps 2308 Brooklyn Kansas City, Mo.	F. Stephenson 1515 E. 24th St. Kansas City, Mo.

ASSOCIATIONS AND MODERATORS

ASSOCIATIONS	MODERATORS	SECRETARIES
MISSOURI (Continued)		
Third District	Rev. G. W. Broughton 809 Garfield Popular Bluff, Mo.	Rev. Kater E. Crump Sikeston, Mo.
Mt. Carmel	Rev. C. E. Richards 609 Railroad St. Mexico, Mo.	Mr. B. F. Butler Auxvasse, Mo.
Berean	Rev. W. L. Rhodes 216 S. Brentwood Clayton, Mo.	E. R. Smith Welston, Mo.
North Missouri	Rev. C. W. Carter 1610 Agnes Ave. Kansas City, Mo.	Rev. C. E. Woods Monroe City, Mo.
Mt. Zion	Rev. C. O. Banks 212 W. Kansas Ave. St. Joseph, Mo.	Rev. W. M. Holmes 223 W. Robard Brookfield, Mo.
Springhill	Rev. G. L. Gladney New Madrid, Mo.	Mrs. Sarah Harris Rt. 1 Matheus, Mo.
Union	Rev. James Chandler 4607 Enright St. Louis, Mo.	Rev. A. Kelly 4424 Delmar St. St. Louis, Mo.
Antioch	Rev. W. L. Johnson So. Kinloch, Mo.	Miss Edmae Puch 2611 N. Taylor Ave. St. Louis, Mo.
Christian Liberty	Rev. J. D. Pinermon Rt. 1 Bell City, Mo.	Mrs. Bertha Byrd Dexter, Mo.
Central	Rev. L. D. Hardiman 412 N. Osage St. Sedalia, Mo.	Rev. A. H. Smith Bunceton, Mo.
Southwest	Rev. J. T. Smith Joplin, Mo.	Willetta Wallace Springfield, Mo.
Guiding Star	Rev. H. P. Phillips 2221 Carr Street St. Louis, Mo.	
Pemiscott	Rev. E. C. Keeble Popular Bluff, Ark.	
NEBRASKA		
Western District	Rev. Wm. Clayton Omaha, Neb.	
Eastern District	Rev. Wm. Shaw Ottumma, Iowa	
Central District	Rev. H. R. Fields Des Moines, Iowa	
NEW JERSEY		
North Jersey	Rev. C. T. Wilcher 534 North 5th St. Newark, N. J.	Rev. Geo. Riley 23 Carroll St. Paterson, N. J.

ASSOCIATIONS AND MODERATORS

ASSOCIATIONS	MODERATORS	SECRETARIES
NEW JERSEY (Continued)		
New Hope	Rev. D. J. Jenkins 62 Peashine Ave. Newark, N. J.	Rev. J. H. Croom 221 Broome St Newark, N. J.
Seacoast	Rev. E. D. Crawley 20 DeWitt Ave. Asbury Park, N. J.	Rev. E. L. Tillman 179 Greenwood Ave. Neptune, N. J.
Bethany	Rev. V. S. Griggs 413 Chestnut St Moorestown, N. J.	Rev. J. H. Talton 24 Spruce St. Merchantville, N. J.
Middlesex-Central	Rev. Geo. L. Harris 410 Catherine St. Elizabeth, N. J.	Rev. A. Ross Brent 515 West 4th St. Plainsfield, N. J.
NEW YORK		
North Jersey	Rev. Geo. Sims 131 W. 131st St. New York, N. Y.	
Manhattan, Westchester, Bronx & Staten Island	Rev. L. Kay 18 Wood Street Yonkers, N. Y.	
Eastern Baptist	Rev. James R. Moore 164-19 108th Avenue Jamaica, N. Y.	D. C. L. Franklin
Central Hudson	Rev. H. D. Morris 120 Brookfield Street White Plains, N. Y.	
Mohawk & Upper Hudson	Rev. M. S. Hunter 159 Quil Street Albany, N. Y.	
Central District	Rev. R. L. Weaver 150 Union Street Kingston, N. Y.	
Western New York	Rev. A. B. Washington 521 Erie Avenue Niagara Falls, N. Y.	
NORTH CAROLINA		
McDowell-Burke	Rev. F. D. Young 701 West Concord Street Morganton, N. C.	
New Bern Eastern	Rev. U. G. Moyer 1003 Macon Street Kingston, N. C.	
New Era	Rev. N. H. Hamar Fair Bluff, N. C.	

ASSOCIATIONS AND MODERATORS

ASSOCIATIONS	MODERATORS	SECRETARIES
NORTH CAROLINA (Continued)		
New Home and Durham	Rev. D. F. Brown 1014 Carroll Street Durham, N. C.	
New Hope	Rev. T. A. Grady Box 1442 Durham, N. C.	
Neuse River	Rev. T. V. Foster 413 Carolina Avenue Rocky Mount, N. C.	
Ocean View	Rev. L. M. Stevenson Longwood, N. C.	
Old Eastern	Rev. J. A. Nimmo 214 West First Street Greenville, N. C.	
Original Shiloh	Rev. N. A. Cheek Box 44 Elberon, N. C.	
Pee Dee	Rev. G. B. Gilchrist Laurinburg, N. C.	
Reedy Creek	Rev. J. E. McGrier Warrenton, N. C.	
Rising Star	Rev. W. M. Alexander 701 S. Shaver Street Salisbury, N. C.	
Bear Creek	Rev. J. E. Bowden LaGrange, N. C.	
Bethlehem Union	Rev. M. N. Zollicoffer Route 2 Littleton, N. C.	
Beulah	Rev. H. H. Hart P. O. Box 64 Winton, N. C.	
Brunswick-Waccamaw	Rev. D. C. Gore Whiteville, N. C.	
Cedar Grove	Rev. W. M. Warner Star Route Danville, Va.	
County Line	Rev. D. P. Lewis Box 366 Roanoke Rapids, N. C.	
Deep River	Rev. O. P. Foster Box 671 Burlington, N. C.	
East Cedar Grove	Rev. G. W. Thomas Route 2 Roxboro, N. C.	

ASSOCIATIONS AND MODERATORS

ASSOCIATIONS	MODERATORS	SECRETARIES
NORTH CAROLINA (Continued)		
East Pamlico River	Rev. G. A. Moore Bonnerton, N. C.	
Ebenezer	Rev. F. L. Howell Route 2 Cherryville, N. C.	
Friendship	Rev. T. F. Fraylon 608 East Ninth Street Charlotte, N. C.	
French Broad	Rev. E. B. King 23 Adams Street Asheville, N. C.	
Gold Hill	Rev. H. B. Ferguson B-118½ W. Chapel Road Asheville, N. C.	
Roanoke	Rev. J. E. Tillet 403 Granville Street Edenton, N. C.	
Rowan	Rev. J. T. Hairston 836 Austin Street Greensboro, N. C.	
Shiloh	Rev. J. M. Burchett Ridgeway, N. C.	
Saint John	Rev. C. J. Cooper Red Springs, N. C.	
Tar River	Rev. P. H. Hedgespeth Trenton, N. C.	
Trent River Oakey Grove	Rev. J. N. Kornegay Trenton, N. C.	
Union	Rev. T. H. Dwelle P. O. Box 829 Fayetteville, N. C.	
Wake	Rev. G. S. Stokes Middlesex, N. C.	
Waynesville	Rev. J. H. Smith Sylva, N. C.	
West Roanoke	Rev. D. L. Simon Powellsville, N. C.	
Western Union	Rev. B. F. Johnson 800 Poplar Street Goldsboro, N. C.	
Wilson County	Rev. B. H. Edwards Rt. 2 Box 125 Elm City, N. C.	
Yadkin Davie	Rev. R. Howell Mocksville, N. C.	

ASSOCIATIONS AND MODERATORS

ASSOCIATIONS	MODERATORS	SECRETARIES
--------------	------------	-------------

NORTH CAROLINA (Continued)

Yadkin Philadelphia	Rev. W. T. Johnson Wadesboro, N. C.	
Yadkin Valley	Rev. J. A. Parson Taylorsville, N. C.	
Zion	Rev. J. W. Diggs Pee Dee, N. C.	
Hammond Creek	Rev. R. L. Blue Rt. 1 Box 122 Clinton, N. C.	
High Point	Rev. J. B. Ellis Burlington, N. C.	
Hyde County	Rev. A. B. Fulford Swanquarter, N. C.	
Johnston	Rev. J. W. Jones 818 East Martin Street Raleigh, N. C.	
Kenansville Eastern	Rev. J. M. Newkirk Rosehill, N. C.	
Lanes Creek	Rev. D. F. Moore 1901 Beatties Ford Road Charlotte, N. C.	
Lumber River	Rev. W. D. Mitchell Fairmont, N. C.	
Middle	Rev. J. M. Burchett Ridgeway, N. C.	
Middle District	Rev. Hayes Peterson Rev. J. D. McRae (Acting) Rt. 1 (East) Wilmington, N. C.	
Middle Ground Roanoke	Rev. G. T. Hill Williamston, N. C.	
Mountain and Catawba	Rev. W. S. Sherrill Route 2 Troutman, N. C.	
Mount Peace	Rev. T. C. Sanders 1315 Beatties Ford Road Charlotte, N. C.	
Mud Creek	Rev. E. W. Dixon 44 Clingman Avenue Asheville, N. C.	
OHIO		
Northern	Rev. J. C. Walker 2251 E. 86th Street Cleveland, Ohio	Rev. B. Lawson 10011 S. Blvd. Cleveland, Ohio

ASSOCIATIONS AND MODERATORS

ASSOCIATIONS	MODERATORS	SECRETARIES
OHIO (Continued)		
Western Union	Rev. J. Welby Broaddus 1227 Home Avenue Dayton, Ohio	Rev. Jas. Crable 520 W. Spring Street Lima, Ohio
Eastern Union	Rev. J. Ashburn 308 S. Oakley Avenue Columbus, Ohio	Rev. B. Patrick 815 Leonard Avenue Columbus, Ohio
Northwestern	Rev. J. A. Dotson 906½ Arondale Ave. Toledo, Ohio	Mr. D. N. Galloway 721 Vance Street Toledo, Ohio
Providence	Rev. A. G. Freeman 822 S. Tenth Street Ironton, Ohio	Rev. B. R. Smith Bidwell, Ohio
Logan County	Rev. T. H. Hood Box 1514 Logan, W. Va.	Deacon W. C. Wanwel Box 54 Peach Creek, W. Va.
Bethlehem District	Rev. C. R. Worthy Cleveland, Ohio	
Toledo District	Rev. E. Benton 216 John R. Street Toledo, Ohio	
Jerusalem District	Rev. B. F. Coluin 6504 Woodland Avenue Cleveland, Ohio	
Progressive District	Rev. J. W. Ribbins 2344 E. 30th Street Cleveland, Ohio	
Eastern Ohio District	Rev. I. R. Hall 2002 Wilson Avenue Youngstown, Ohio	
OKLAHOMA		
North West Creek	Rev. Theo. Rowland 2507 N. Peoria Tulsa	
East Zion	Rev. J. P. Patterson Box 96 Ponca City	
Creek	Rev. A. L. Branch 509 E. King Tulsa	
St. Mark	Rev. S. A. Clark 1015 E. Grant Guthrie	
Collate	Rev. M. M. Williams 5 S. 10th McAlester	

ASSOCIATIONS AND MODERATORS

ASSOCIATIONS	MODERATORS	SECRETARIES
--------------	------------	-------------

OKLAHOMA (Continued)

Western	Rev. W. L. Humphrey Box 249 Enid	
Chickasaw	Rev. T. F. Fisher 819 S. 2nd Street Chichsha	
South West Creek Land Mark	Rev. J. W. Tomlin Route 1 Boley	
St. Paul	Rev. R. A. Johnson 615 W. 6th Street Bartlesville	
Oklahoma	Rev. C. H. Johnson Rt. 2 Box 112 Guthrie, Oklahoma	
Central Wayland District	Rev. J. L. Hawkins Spiro, Okla.	Rev. A. C. Lomax Route 2 Spiro, Okla.
South Eastern District	Rev. J. Dean Caldwell Harris, Okla.	
Union District	Rev. E. W. White Box 141 Rentesville, Okla	

PENNSYLVANIA

Allegheny General	Rev. H. H. Rucker 143 E. Chestnut Street Washington, Pa.	
Union	Rev. D. B. Russell 7209 Monticello Street Pittsburgh, Pa.	
Pennsylvania	Rev. E. T. Lewis 1724 D. Montgomery Avenue Philadelphia, Pa.	
Eastern Keystone	Rev. A. Hobbs 559 Coulter Street Philadelphia, Pa.	
Antioch Baptist Assn	Rev. J. H. Patten 1024 Christian Street Philadelphia, Pa.	
Salem	Rev. A. Alexander Coatsville, Pa.	
Central	Rev. R. F. Spraggins 3 Chestnut Street Mt. Union, Pa.	
Youghiogheny W.	Rev. Maxie Smith	

ASSOCIATIONS AND MODERATORS

ASSOCIATIONS	MODERATORS	SECRETARIES
Bethany _____		
Suburban _____	Rev. G. G. McGee Pinllyn, Pa.	
SOUTH CAROLINA		
Gethsemane _____	Rev. N. Smith Ridgeway, S. C.	Rev. L. C. Jenkins Columbia, S. C.
Jerusalem _____	Rev. G. G. Daniels Georgetown, S. C.	Rev. J. M. Murray Greeleyville, S. C.
Kingston Lake _____	Rev. G. G. Daniels Georgetown, S. C.	Rev. E. O. Chestnut Conway, S. C.
Little River _____	Rev. H. A. Peterson Greenwood, S. C.	Rev. Earl Thomas Hodges, S. C.
Lovely Hill _____	Rev. S. D. Rickenbacker Bamberg, S. C.	Rev. W. M. Primus St. George
Little Pee Dee _____	Rev. W. B. Washington Marion, S. C.	Rev. W. G. McFaddin Mullins, S. C.
Mt. Hope _____	Rev. L. R. Payton Orangeburg, S. C.	Rev. Henry Grant Fairfax, S. C.
Mt. Peaceful _____	Rev. E. J. Mungo Lancaster, S. C.	
Mt. Olive _____	Rev. W. B. Coleman Augusta, Ga.	
Mt. Hebron _____	Rev. C. Anderson Columbia, S. C.	
Macedonia _____	Rev. H. B. Bush Dunbarton	
Mt. Calvary _____	Rev. H. B. Bush Dunbarton	
Mt. Moriah _____	Rev. J. W. Boykin Camden, S. C.	Rev. R. E. Boykin Horatio, S. C.
Mt. Carmel _____	Rev. P. R. Washington Yemassee	
Mt. Sinai _____	Rev. C. Warren Clover	
New Enoree _____	Rev. J. C. Collier Newberry, S. C.	Rev. M. M. Fant Clinton, S. C.
Mt. Zion _____	Rev. J. W. Shaw Early Branch	
North Enoree _____	Rev. Wm. Lipscomb Greenville, S. C.	
Nazareen _____	Rev. E. A. Johnson Vaugniulle, S. C.	
North Augusta _____	Rev. Ingram Tolitha	
Ooleney _____	Rev. Y. B. Moore Easely, S. C.	Rev. Mrs. Ora Hallums Pickens, S. C.

ASSOCIATIONS AND MODERATORS

ASSOCIATIONS	MODERATORS	SECRETARIES
SOUTH CAROLINA (Continued)		
Orangeburg Colored Baptist	Rev. J. M. Felder Elloree	
Orangeburg Regular	Rev. J. M. Felder Elloree	
Pacolet Rever	Rev. A. D. Duncan Union, S. C.	
Pee Dee	Rev. W. F. McIntosh N. A. Cato	
Richland Co.	Rev. C. B. Freeman Cayce	
Reedy River	Rev. P. J. Barton Fountain Inn	
Ridge Hill	Rev. Jno. Davis Ridgespring	Rev. T. T. Watson Ridgespring
Rocky River	Rev. J. C. Cowan Anderson, S. C.	Rev. H. R. Asbury Anderson, S. C.
Antioch	Rev. S. Butler Cross, S. C.	Rev. W. J. Brown Jamestown, S. C.
Ashley (New)	Rev. J. J. Maxwell Charleston, S. C.	Rev. G. C. William Charleston, S. C.
Ashley (Old)	Rev. C. Whaley Edisto Island	Rev. B. H. Washington Frogmore, S. C.
Berea	Rev. J. A. Alsbrooks Bennettsville, S. C.	
Beaver Creek	Rev. W. B. Coleman Augusta, Ga.	
Bethlehem	Rev. C. A. Leigler Bamberg	Rev. E. D. Reed, Jr. Williston
Black River	Rev. J. C. Clark Manning	Rev. J. P. Garrick Sumter, S. C.
Calhoun Co.	Rev. D. Mitchell St. Matthews	
Cedar Branch	Rev. W. H. Vaughn Aiken, S. C.	
Cooper River	Rev. S. L. Taylor Navy Yard	
Colored Baptist Calhoun	Rev. J. W. Demore Parlers, S. C.	
Charleston Co.	Rev. J. T. Thomas Charleston, S. C.	Rev. D. S. Frasier Charleston, S. C.
Enoree River	Rev. C. F. Gandy Greenville, S. C.	
Fairfield County	Rev. H. W. Adamson Ridgeway	Rev. C. H. Land Leeds
Four Mile	Rev. W. M. Phinizy Dunbarton	Rev. R. L. Miles Miles, S. C.

ASSOCIATIONS AND MODERATORS

ASSOCIATIONS	MODERATORS	SECRETARIES
SOUTH CAROLINA (Continued)		
Friendship	Rev. O. Mack Sumter	Rev. T. J. Johnson Sumter
Rocky Spring	Rev. Samuel Houston Estile	
Sandy River, Upper Divison	Rev. T. R. Hampton Rock Hill, S. C.	Rev. C. S. Hall
Seneca River	Rev. J. C. McDowell Pendleton	Rev. M. J. Alexander Seneca
Simmon Ridge Samaritan	Rev. M. D. Mobley Saluda	Rev. W. A. Holloway Edgefield
Spartanburg Co.	Rev. W. L. Wilson Spartanburg, S. C.	Rev. J. G. Ezell Chesnee
Savannah Valley Goodwill	Rev. A. Ware Calhoun Falls	
St. Vaughnville	Rev. T. P. Johnson Silver Street	
Spring Grove	Rev. A. C. Johnson Augusta, Ga.	Rev. W. Walls Merethevereth
Sandy River (Lower)	Rev. S. E. Blake York	
St. Paul	Rev. S. E. Blake York	Rev. F. I. Sims
St. Paul	Rev. W. M. Hall Sumter, S. C.	Rev. J. E. Amos Sumter, S. C.
Storm Branch	Rev. J. H. Patterson Jackson	Rev. J. H. Patterson Jackson
St. Matthew	Rev. R. Rauemel Columbia, S. C.	Rev. Milton Kimpson St. Matthew
Silver Spring	Rev. M. G. Mosley Aiken, S. C.	
Thickety Mount	Rev. W. S. Smith Gaffney	Rev. S. M. Allen Cowpens
Tumbling Shoals	Rev. E. W. Wright Laurens	Rev. F. M. Garrett Laurens
Tyger	Rev. A. M. Matthews Spartanburg, S. C.	
Union Baptist	Rev. M. A. Zimmerman Union	
Union Bright Light	Rev. J. W. Blackman Lancaster	Rev. B. J. Blackman Lancaster
Vaughnville	Rev. M. C. Freeman Silver Street	Rev. M. R. Reeder Silver Street
Williamsburg Co.	Rev. R. H. McElveen Salters	

ASSOCIATIONS AND MODERATORS

ASSOCIATIONS	MODERATORS	SECRETARIES
--------------	------------	-------------

SOUTH CAROLINA (Continued)

Wateree (Upper Div.)	Rev. J. B. Barber Hopkins	Rev. W. H. Neal Columbia, S. C.
Wateree (Lower Div.)	Rev. J. A. Mack Bishopville	Rev. J. P. Garrick Sumter, S. C.
Zion (New)	Rev. E. A. Johnson Vaughnville	

TENNESSEE

Aid and Benevolent	Rev. W. C. Thomas 870 E. McLemore Memphis, Tenn.	
Bethel	Rev. G. A. Nance Jefferson City, Tenn.	
Brown's Creek	Rev. A. W. Conley 236 Peabody Street Dyersburg, Tenn.	
Buena Vista	Rev. O. F. Roberson Hartsville, Tenn.	Prof. C. E. Payne 115 Spring Street Carthage, Tenn.
Chickasaw	Rev. L. A. Hamblin 219 Ashland Street Memphis, Tenn.	
Duck River	Rev. M. F. Riley 812 Woodside Street Columbia, Tenn.	
Elk River	Rev. D. J. Tate 104 Holly Street So. Pittsburg	
Emmanuel	Rev. J. B. Trent 416 Beale Avenue Memphis, Tenn.	
East Fork	Rev. W. O. Gregory Hartsville	
Friendship	Rev. J. L. Campbell 1287 So. Parkway E., Memphis	
General	Rev. J. H. Johnson 1600 Miller Street Memphis, Tenn.	
Hickory Grove	Rev. A. E. Campbell 2500 Carnes Avenue Memphis	
Knoxville	Rev. M. C. M. Harris 1716 Bethel Avenue Knoxville	

ASSOCIATIONS AND MODERATORS

ASSOCIATIONS	MODERATORS	SECRETARIES
TENNESSEE (Continued)		
Little Fork	Rev. J. T. Martin 1022 Main Street Clarksville	
Tennessee River	Rev. R. L. Montgomery Camden	Rev. J. W. Bradley Decaturville, Tenn.
Union-Peace	Rev. J. H. Porter 70 N. Main Street Covington	
West Tenn. Central	Rev. T. Grimes 130 Mobile Street Jackson	
West Tenn. Educ.	Rev. J. E. Clark 1793 Bismark Street Memphis	
West Tenn. B. M. and E.	Rev. S. A. Owen 761 Walker Avenue Memphis	Prof. W. L. Pulliam 942 N. Bellevue Blvd. Memphis
Whitehaven	Rev. W. H. Mosby 1434 Azalia Street Memphis	
Zion	Rev. I. D. Cheers 1342 Barbour Street Memphis	
Loudon	Rev. E. P. Crutcher 611 Owen Street Knoxville	
Memphis	Rev. Wm. Fields 391 N. Decatur Memphis	
Mississippi Valley	Rev. W. B. Shannon 313 Hale Street Jackson, Tenn.	
Miss. Bapt. Peoples	Rev. H. Greer 718 Hernando Street Memphis	
New Era	Rev. T. H. Donald Rt. 2 Box 27 Medon	
New Era (Memphis)	Rev. C. L. Reed 958 Miss. Blvd. Memphis	
No. Chicamauga and Chattanooga	Rev. Ed Angel 104 Oak Street So. Pittsburg	
Olion River	Rev. T. D. Howard 222 Tanyard Street Jackson	

ASSOCIATIONS AND MODERATORS

ASSOCIATIONS	MODERATORS	SECRETARIES
--------------	------------	-------------

TENNESSEE (Continued)

Pilgrim Joy	Rev. J. P. Daniels Rt. 2 Box 407 Chattanooga, Tenn.	
Pleasant Grove	Rev. G. W. Jones Germantown, Tenn.	
Richland Creek	Rev. David Howard 39 Spear Street Pulaski	
Riverside Union	Rev. H. B. Brunson 274 So. Orleans Street Memphis	
Stone River	Rev. W. B. Rouse 1423 Edgehill Avenue Nashville	

TEXAS

Sabine Valley District	Rev. J. P. Canton Rt. 2 Box 25 San Augustine, Texas	
Cypress District	Rev. J. I. Gilmore Rt. 4 Box 50 Wolfe City, Texas	
East Texas Mt. Zion District	Rev. C. A. Bell Route 4 Center, Texas	
Texas and Louisiana District	Rev. S. H. Howard Box 145 Marshall, Texas	
Friendship District	Rev. J. S. Simmons 406 S. Hattie Street Terrell, Texas	
New Zeal District	Rev. L. E. Brown-Vice Moderator 308 Robinson Street Taylor, Texas	
Unity District	Rev. G. R. King 2205 W. 15th Street Texarkana, Texas	
Trinity Valley District	Rev. J. J. Jackson 1025 Neches Street Beaumont, Texas	
Zion District	Rev. A. B. Lenox Detroit, Texas	
Central District	Rev. H. W. Whiting Washington, Texas	
New Home District	Rev. J. N. E. Perkins Jewett, Texas	

ASSOCIATIONS AND MODERATORS

ASSOCIATIONS	MODERATORS	SECRETARIES
TEXAS (Continued)		
East Mt. Olive District	Rev. J. B. Walker Marshall, Texas	
Lincoln Southern District	Rev. J. H. Tobin 4608 Inker Street Houston, Texas	
LaGrange District	Rev. L. C. Henegan 309 Crosby Street San Antonio, Texas	
Northwestern District	Rev. T. M. Chambers, Sr. 2712 Metropolitan Avenue Dallas, Texas	
West Texas District	Rev. Z. H. Hickerson 411 S. E. 6th Street Mineral Wells, Texas	
Greater Northeast Texas	Rev. J. H. Montgomery Box 537 Jefferson, Texas	
LaGrange Missionary	Rev. A. N. Simmons Plainsville, Texas	
The Lone Star District	Rev. H. Peacock Box 63 Jasper, Texas	
East Texas	Rev. A. P. Cooksey Rt. 4 Box 415 Longview, Texas	
North East Texas	Rev. T. E. George, Jr. Pittsburg, Texas	
West Texas	Rev. C. C. Cyphers 200 Jackson Street Armirillo, Texas	
Union Progressive	Rev. M. H. Wheeler Henderson, Texas	
East Texas No. 2	Rev. J. G. Upshaw Doughlass, Texas	
Old Land Mark	Rev. U. S. Keeling, Sr. P. O. Box 2266 Beaumont, Texas	
Harmony District	Rev. A. L. Moore 917 East 7th Avenue Corsicana, Texas	
Zion Hill	Rev. W. G. Sheppard Terrell, Texas	
Griggs Memorial	Rev. R. B. Riley 5902 Wilder Street Dallas, Texas	
East Texas Bethel	Rev. J. S. Barron Timpson, Texas	

ASSOCIATIONS AND MODERATORS

ASSOCIATIONS	MODERATORS	SECRETARIES
--------------	------------	-------------

TEXAS (Continued)

Willow Groove	_____	Rev. T. M. Garland 611 West Jefferson Waco, Texas
Bethel Union	_____	Rev. S. H. Howard Marshall, Texas
Zion Rest	_____	Rev. J. W. Spelman Henderson, Texas
Oak Grove	_____	Rev. J. L. Gilmore Wolf City, Texas
Galilee Griggs	_____	Rev. G. A. Sparks Fort Worth, Texas

VIRGINIA

Bluestone	_____	Rev. C. A. Watkins Meherrin, Va.
Cherrystone	_____	Rev. J. J. Davis Getna, Va.
Pamunkey	_____	Rev. A. D. Clark 721 Orleans Street Richmond, Va.
Southside	_____	Rev. B. H. Gayles Saluda, Va.
Harmony	_____	Rev. C. H. Rhoades 1205 North 24th St. Richmond, Va.
Norfolk Union	_____	Rev. S. L. Scott 1816 Effingham St. Portsmouth, Va.
Sunnyside	_____	Rev. W. J. Beard South Boston, Va.
Schaffer Memorial	_____	Rev. C. J. Smith Salem, Va.
Tuckahoe	_____	Rev. J. E. Fountain 809 W. Clay Street Richmond, Va.
Shiloh	_____	Rev. C. S. McCall 1207 North 24th St. Richmond, Va.
Eastern Shore	_____	Rev. D. J. Black Capeville, Va.
Northern Neck	_____	Rev. J. J. Nickens Downing, Va.
Slate River Baptist	_____	Rev. W. J. Jones Bleinheim, Va.
Tidewater Peninsula	_____	Rev. C. E. Jones Newport News, Va.

ASSOCIATIONS AND MODERATORS

ASSOCIATIONS	MODERATORS	SECRETARIES
VIRGINIA (Continued)		
Northern Virginia Baptists	Rev. S. B. Ross 1018 Oronoca Street Alexandria, Va.	
Valley Baptist	Rev. W. M. Gilbert 22 Gregory Avenue Roanoke, Va.	Rev. W. L. Johns Bedford, Va.
Wayland Blueridge Baptist	Rev. W. J. Madden Culpepper, Va.	Mr. C. B. Coleman Culpepper, Va.
Amelia-Nottoway Baptist	Rev. L. W. Bass Farmville, Va.	S. C. Tlyyy Richmond, Va.
Protestant		
Valley Baptist	Rev. C. W. Ingram Staunton, Va.	
Bethany	Rev. E. D. Shands North Emporia	
Clinch River Baptist Miss.	Rev. E. D. Long Appalachia, Va.	O. King Clinch, W. Va.
James River Dist. Baptist	Rev. G. W. Haden Gum Springs, Va.	
Mattipona Baptist	Rev. E. L. R. Guss Guinea, Va.	Rev. R. L. Taylor 807 N. 26th Street Richmond, Va.
Rockfish Baptist	Rev. Wm. Bailey Wimgina, Va.	
Sharon Baptist	Rev. W. P. Jones Rt. 2, Box 116 Norfolk, Va.	
Lebanon Baptist	Rev. Wm Lamb Claremont, Va.	J. A. Bank Rushmore, Va.
Chickahominy	Rev. William L. Godsey	
WEST, VIRGINIA		
Tug River Valley	Rev. C. A. Murry Williamson, W. Va.	Rev. P. L. Winfrey
Coal River Valley	Rev. C. H. Rawlings Lester, W. Va.	Rev. C. H. Clemons
Winding Gulf	Rev. W. J. Carter Sullivan, W. Va.	Rev. J. A. Jackson
New River Valley	Rev. J. M. Davis Fayetteville, W. Va.	Rev. J. K. Smith
Guyan Valley	Rev. J. T. Tyler Logan, W. Va.	Rev. A. J. Jones
Flat Top	Rev. J. W. Crockett Omar, W. Va.	Rev. J. C. Henderson

ASSOCIATIONS AND MODERATORS

<u>ASSOCIATIONS</u>	<u>MODERATORS</u>	<u>SECRETARIES</u>
Mount Olivet	Rev. H. C. Head 305 N. Rand Street Charleston, W. Va.	Rev. J. Carl Mitchell
Tygart Valley	Rev. W. A. Jones Box 258 Carolina, W. Va.	Rev. W. B. Brewster
Mount Zion	Rev. J. H. Younger 456 Water Street Clarksburg, W. Va.	Rev. C. B. W. Gordon

TEACHING HELPS

FOR THE SUNDAY SCHOOL

(INT. S. S. TOPICS)

Also

Class Quarterlies & Papers For All Age Groups

Write For Samples

UNION GOSPEL PRESS

CLEVELAND 1, OHIO

SHAW UNIVERSITY

Raleigh, North Carolina

The oldest Negro Baptist College in the World of
continuous existence as one institution

COURSES LEADING TO DEGREES OF:—

BACHELOR OF ARTS

BACHELOR OF SCIENCES

BACHELOR OF DIVINITY

Special Department of Missionary and Religious Education

Viewing the needs of the Christian church carefully, we note the tragic lack of trained leadership, and through a Department of Religious Education we desire to prepare such leadership. Men and women who present themselves with the basic requirements—intelligence, personality, wholehearted dedication to the cause of Christ—may take college courses leading to the A.B. degree with a major in Religion and prepare themselves to fill the positions now being made available in many fields. More and more as denominations recognize the value of trained leadership, there are developing openings for such graduates in the social service, editorial, educational, missionary, and administrative phases of organized Christian groups.

A Bachelor of Arts degree with a major in Religion may be earned by pursuing one of the following four curriculum specializations: Pre-Theological, Teacher of Bible and Social Science in Secondary Schools, Religious Education Worker, and Missionary Field Workers.

“The Religion and Learning may go hand
in hand and Character grow with Knowledge.”

ROBERT P. DANIEL, President

THE RURAL CHURCHMAN

**A Religious News Weekly for the Christian Layman
and Pastor of the Town and Country Church**

**A Rural Church Paper Designed to Serve the
Christian Enterprise Among Rural People**

SUBSCRIPTION \$1.00 PER YEAR

Write to

THE RURAL CHURCHMAN

State College, Pennsylvania

Greetings!!

FROM

BISHOP COLLEGE

MARSHALL, TEXAS

**A PROGRESSIVE ACCREDITED CHRISTIAN
COLLEGE WITH A FUNCTIONAL PROGRAM,
THE PERSONAL TOUCH AND THE UNIVER-
SITY MIND.**

(JOSEPH J. RHODES, PRESIDENT)

**HERE'S THE WAY
TO HELP YOUR
CHURCH
RAISE MONEY**

ACTUAL
SIZE
9 3/8 x 18 1/2"



**SELL 1947
MESSENGER
Scripture Text
Calendars**

Earn money for your church or society this easy way. These beautiful calendars, with 13 full color illustrations by famous artists, sell on sight. An inspirational message for each day — International Sunday School Lesson assignment and Golden Text for each Sunday and other features make this calendar indispensable in the home. These and other useful facts make Messenger Calendars an easy source of big money for a small amount of spare time.

SPECIAL QUANTITY PRICES

Amt.	Cost	Sell for	Profit
100	\$18.50	\$30.00	\$11.50
200	35.00	60.00	25.00
300	49.50	90.00	40.50
500	77.50	150.00	72.50

Single copies, 30 cents; 4 copies, \$1.00; 12 copies, \$3.00; 25 copies, \$6.00; 50 copies, \$10.00.

All prices slightly higher in Canada. Order Messenger Scripture Text Calendars from your own publishing house, or

MAIL THIS COUPON

Messenger Corporation — Dept. N8
Auburn, Indiana

Enclosed, find \$..... for which send me
..... Messenger Scripture Text Calendars.
Also your sales plan.

Name.....

Address.....



A Proposed Dormitory For Graduate Seminary Men

VIRGINIA UNION UNIVERSITY

A Baptist College for Negro youth in Richmond, Virginia

This Class "A" college has a department of Missionary and Leadership Training and a graduate School of Religion. Virginia Union's specialty is training leaders: ministers, teachers, lawyers, physicians, dentists, missionaries, and social workers.

In the confused postwar days such leadership training is doubly important. Economic and social chaos can be avoided only by trained leaders who believe in the teachings of Jesus. The "Race Problem" of tomorrow must be solved by the Christian college of today.

This million dollar institution is an investment in the future of our country and the world.

Literature and Catalogue sent on request

DR. JOHN MALCUS ELLISON, President

Virginia Union University 1500 N. Lombardy Street,
Richmond 20, Virginia

SELMA UNIVERSITY

SELMA, ALABAMA

Boarding Department Opens September 19, 1946.

Orientation Week, September 19-24, 1946.

Seventieth Academic Year Begins September 25, 1946.

DEPARTMENTS

SENIOR HIGH SCHOOL

College Preparatory
Normal Preparatory

JUNIOR COLLEGE

Teachers Professional
Pre-Medical
Classical

SENIOR COLLEGE

Classical

THEOLOGICAL

Pastor's Course
Bachelor of Theology
Course
Bachelor of Divinity
Course

INDUSTRIAL

Sewing and Dressmaking

AFFILIATED DEPTS.

Elementary Training
School
Junior High School
Summer School

PUBLICATIONS

Bulletin of Selma University
Published in April, May, June, and
November

The Selma University
Chronicle Published
Monthly—50c a Year—
5c a Copy

SCHOLARSHIP SYSTEM

Selma University maintains a Scholarship System by which District Associations and their auxiliary Conventions may nominate students to receive Associational Scholarships worth fifty dollars for the session.

The Richard C. Phillips Fund pays the tuition of ministerial students taking studies in the Theological Department, provided such students are in or above the Senior High School.

For further information, address

William H. Dinkins, President,

SELMA UNIVERSITY

Selma, Alabama

CLARK COLLEGE

ATLANTA, GEORGIA



A co-educational college of Liberal Arts and Sciences granting the ● Bachelor of Arts, ● Bachelor of Science, ● Bachelor of Science in Home Economics degrees.

Clark College is rated as an "A" class institution by the Association of Colleges and Secondary Schools of the Southern States. Its graduates are recognized by the leading American Universities for graduate work.

For more than three quarters of a century Clark College has sent forth men and women imbued with a sense of usefulness.

For information address the **DEAN** of the College or the **PRESIDENT**

USE
Apex
GLOSSATINA
FOR CULTIVATING HAIR WITH HOT COMB

MOREHOUSE COLLEGE

ATLANTA, GEORGIA

Class A College

Modern Equipment

Able Faculty

Exceptionally qualified to prepare young men to enter the fields of religion, medicine, dentistry, law, teaching, social work, government service, accounting, business and technology. Famous within recent years for the significant places of leadership achieved by its graduates. Intellect and character equally stressed.

For Further Information Write—THE REGISTRAR

Alexander & Co.

T. M. ALEXANDER, President

INSURANCE OF ALL KINDS

COURTESY - EFFICIENCY - SERVICE



Alexander-Calloway Realty Company

Complete Property Management Service

208 Auburn Avenue, N. E.

Atlanta, Georgia

Hopkins Book Concern

THE OLDEST NEGRO CHURCH SUPPLY HOUSE

ESTABLISHED 1905

BIBLES—RELIGIOUS BOOKS

SUNDAY SCHOOL SUPPLIES

CHURCH REQUISITES



Let Us Supply Your Needs

FIRST CLASS MAIL ORDER SERVICE

141 Auburn Ave., N. E.

Atlanta, Ga.

J. B. Blayton & Co.

ATLANTA—CHICAGO—PHILADELPHIA

ACCOUNTANTS—AUDITORS—ACTUARIES

CERTIFIED PUBLIC ACCOUNTANTS

*** * * ***

Admitted to Practice Before U. S. Treasury Department

and Board of Tax Appeals

BENEDICT COLLEGE

A Pioneer Institution of Higher Learning
Located in the City of Columbia
The Heart of The State

•

The Following Degrees Are Conferred
A. B., B. S., B. Th., and B. D.
With Majors in English, Chemistry,
Biology, History, Religion, French and
Home Economics

In Addition a Student May Receive a
Minor in Economics, Sociology, Mathe-
matics, Pre-School Education.

PRE-MEDICAL AND PRE-DENTAL TRAINING

Splendid Opportunities For Intellectual
Growth and Character Development
Moderate Expenses

•

For Further Information Write—

J. A. Bacoats, President
Benedict College
Columbia 13, South Carolina

1884

1946

ARKANSAS BAPTIST COLLEGE

LITTLE ROCK, ARKANSAS

Stands For Christian Education

The Institution is a Christian School, Supported by the Consolidated Missionary Baptist State Convention of Arkansas; Composed of the Negro Baptist Churches in the State. Other Organizations and Individuals favorable to the Cause of Negro Education.

A College which has constantly nurtured Christian Character and leadership; which has in the past and is now sending out a constant stream of young men and women rooted in Christian ideals and purposes.

The Courses of Study Are:

Four Year High School; Two Year Junior College; Four Year College; Home Economics; Music; Physical Education and Business. Courses in Religious Education are taught Ministers and other Christian Workers.

A Model Sunday School and Special Religious Services are conducted every Sunday. The Y.M.C.A. and Y.W.C.A.; the Debating Club; Dramatic Club and Athletic Teams for both the Boys and Girls are Kept well organized.

The Aim of Arkansas Baptist College is to Train Young Men and Women Intellectually, Morally and Spiritually; so that they will be able to make a helpful contribution to Society.

For Further Information Write—

T. W. COGGS, President



A New
and
better
way
for
Japan?

THE BIBLE POINTS TOWARD IT

THE Emperor of Japan has renounced his claim to divinity. *Will the Christian God replace him? Will these Japanese children and millions of others like them find Christ and His way? Or will they fall prey to some false religion which may lead them astray again, to become a menace to world peace?*

The answer is largely in the hands of Christian Americans. Today these youngsters are a clean white page upon which the name of Jesus Christ can be enduringly inscribed. The first essential task is to get to them the story of Jesus in their own language as it is written in the Gospels.

Japanese Christian leaders have asked for immediate shipment of 100,000 Bibles and 2,500,000 Testaments. Our military authorities have assured the necessary transportation facilities. One million Testaments are already ordered and in process of production. All that is lacking is the funds.

We must not lose this great, God-given opportunity to win a whole nation for Christ.

How many Bibles at \$1 each, and Testaments at 20 cents each, will you give?

Please mail this coupon today!

AMERICAN BIBLE SOCIETY

Bible House, 450 Park Avenue, New York 22, N.Y.

I gladly enclose \$..... to send the Scriptures to Japan.

Name.....

Address.....

City..... State.....

NB-1

**THE AMERICAN BAPTIST
THEOLOGICAL SEMINARY**

1800 White's Creek Pike Nashville, Tennessee

Dr. Ralph W. Riley, President



Capable Faculty
Summer School
Extension Courses—Healthful Climate



Courses offered leading to the degrees of:

BACHELOR OF THEOLOGY

BACHELOR OF DIVINITY

MASTER OF ARTS IN THEOLOGY

For information address the Registrar



Under the Auspices of

The National Baptist Convention, U. S. A., Inc. and

The Southern Baptist Convention



The premiums you pay to your North Carolina Mutual agent go through many hands, but they always come back to you.

Your money is carefully invested in Government,

State and municipal bonds; amply secured first mortgages, and other gilt edge securities to earn interest and thereby reduce policy costs. When all income received is more than actually needed, the difference is returned to policyholders in the form of dividends.

And because North Carolina Mutual is owned by its policyholders, many people like you MUTUALLY share in its earnings.



**NORTH CAROLINA
MUTUAL INSURANCE
COMPANY**

C. C. Spaulding, Pres

DURHAM, NORTH CAROLINA

★
HOLD ON TO YOUR
WAR BONDS
AND BUY MORE
★

LELAND COLLEGE

Baker, Louisiana

Four-year Liberal Arts College.

Founded in 1870 by the American Baptist Home Mission Society and Deacon Holbrook Chamberlain of Brooklyn, New York.



OBJECTIVES:

"Thorough Training of Preachers and Teachers."

Emphasizes:

**"Making A Life As Well As Making
A Living"**

Courses fully State-Approved, leading to the academic degrees of A. B. and B. S.

Graduates occupy the leading pulpits and school-rooms of the State.

SPECIAL Courses:

BUSINESS ADMINISTRATION
HOME ECONOMICS
PHYSICAL EDUCATION
POULTRY-RAISING
ANIMAL HUSBANDRY

REASONABLE RATES



For Further Information Write—

J. M. Frazier, President.

THE NORTH CAROLINA COLLEGE FOR NEGROES

—*Announces*—

The Opening of the Fall Term

September 17, 1946



**Graduate Courses leading to the M. A. and
M. S. degrees will be offered in various de-
partments.**

**Courses in Library Science, Public Health
Education and Law will be offered.**



FOR FURTHER INFORMATION WRITE TO:

N. C. COLLEGE FOR NEGROES

James E. Shepard, President
Durham, North Carolina

PULPIT AND CHOIR
GOWNS

THE BEST OF THEIR KIND



WORKMANSHIP
 AND
 PERFECT FIT
 UNSURPASSED

WRITE FOR
 CATALOG



**BENTLEY
 & SIMON, INC.**
 ESTABLISHED 1912

7 W. 36 ST. NEW YORK 18, N.Y.

PULPIT LOAVES

Outstanding Sermons in Mss. form; BREAD FOR SOULS; Looseleaf; for all types of services. Ten "MEATY LOAVES"—\$2.00; four,—\$1.00; specimen, 35c

Clergy-Aid-Service

"Ministers—To—Ministers"

Box 578 Eagle River, Wis.

FOR ALL GOSPEL SONGS



Come Unto Me	15c
Your Sins Will Find You Out.....	15c
Some Body's Knocking	15c
Dorsey's New Book of Poems.....	35c

Send all orders to

THOMAS A. DORSEY

755 Oakwood Blvd.

Chicago 15, Ill.



A. G. Gaston, Pres.

**"DEVELOPING NEGRO YOUTH"
FOR USEFUL LIVING
TO BE PREPARED FOR GREATER
OPPORTUNITIES—
GET A BUSINESS
EDUCATION—NOW!**

ENROLL IN THE

BOOKER T. WASHINGTON BUSINESS COLLEGE

Member of The:
National Council of Business Schools

Modern Facilities Thorough Instruction

Complete Courses In:

**Typing Shorthand Bookkeeping Auditing
Business Mathematics Accounting Office Methods**

Fall Term Begins Tuesday, Sept. 3, 1946

**Approved by:
United States Veterans' Administration
For G I Training**

Anniston Branch: 109½ West 10th Street—Anniston, Ala.

WORK AND LEARN

CLASSES DAY AND EVENING

**For Further Information
Write:**

**P. O. Box 2621
Birmingham 2, Alabama
A. G. Gaston, President
Mrs. A. G. Gaston,
Directress**



B. T. Washington Business College Bldg.



SEND THE
CHURCH'S JOY-
OUS MESSAGE
LIKE A BEAM
OF LIGHT

WITH

CARILLONIC BELLS

Would you like to reach right into every home in your community? Modern electronics can do it through Schulmerich Carillon Bells! In tones of surpassing beauty your church's message can radiate from the church tower over an area of miles. Every ear will hear—spirits will lift—faith and hope be rekindled. Thoughts and hearts will turn daily to the church—your church.

Carillon Bells are a develop-

ment of Schulmerich—sound engineers for the church, exclusively. They're modest in cost, compact, yet more flexible and far sweeter in tone than any other bells or chimes made. No elaborate structural alterations are needed for installation. Constant satisfaction is guaranteed, of course.

Write to Schulmerich **today** for detailed information contained in the brochure "The Sweetest Music Ever Tolloed." Address Dept. NBB.



CARILLONIC BELLS - TOWER MUSIC SYSTEMS - ACOUSTIC
CORRECTION UNITS - SOUND DISTRIBUTION SYSTEMS - CHURCH HEARING AIDS
SELLERSVILLE, PA.

1905

1946

BUTLER COLLEGE

TYLER, TEXAS

A Christian Institution officially accredited as a standard Junior College. Under the auspices of the East Texas Baptist Association and the Texas Baptist Convention.

* * * *

COURSES OF STUDY

Liberal Arts

Theology

Home Economics

Tailoring

Agriculture

Business Administration

***Special Vocational Courses Offered
To Veterans***

Milton K. Curry, Jr., President

* * * *

For information write to The Registrar

ATLANTA UNIVERSITY SCHOOL OF SOCIAL WORK

*Member of the American Association
of Schools of Social Work*

**COURSES LEAD TO MASTER OF SOCIAL
WORK DEGREE**

**SPECIAL COURSES IN SOCIAL
WORK WITH VETERANS**



HAS RECORD OF PLACING GRADUATES
THROUGHOUT THE NATION IN POSITIONS
AS medical social workers, psychiatric social work-
ers, case workers in Red Cross Chapters and var-
ious executive and administrative work with case
work, child welfare, group work and community
organization agencies in social work field.

**DEMAND GREATLY INCREASED FOR SOCIAL
WORK IN POST WAR WORLD**



FORRESTER B. WASHINGTON, L.L.D., *Director*

247 Henry Street, S. W.

Atlanta, Ga.

STORER COLLEGE

HARPERS FERRY, WEST VIRGINIA

Founded 1867



A four-year co-educational college, rich in historic and Christian traditions—located amid surroundings of surpassing natural beauty sixty-five miles northwest from the Nation's Capital. Storer is proud of its strong Baptist heritage. Through the years emphasis has been upon sound Christian learning and leadership.

Education with a Sense of Direction

COURSES LEADING TO THE BACHELOR'S DEGREES IN

LIBERAL ARTS AND SCIENCE
TEACHER TRAINING
HOME ECONOMICS
BUSINESS
RELIGION

ACCOMMODATIONS FOR VETERANS



For Further Information Write—

RICHARD I. MCKINNEY, President

Citizens Trust Co.

THE BANK ON AUBURN

Statement of Condition June 30, 1946

RESOURCES

Cash	\$ 750,901.58
U. S. Government Securities	2,448,396.83
State of Georgia Securities	28,608.87
Other Bonds Owned	21,076.75
Loans and Discounts	856,086.10
Cash Value, Insurance on Officers	5,970.13
Bank Building and Furniture and Fixtures	61,000.00
Other Real Estate Owned	1.00
Prepaid Expenses	1,341.99
Total	<u>\$4,173,383.25</u>

LIABILITIES

Deposits	\$3,972,946.40
Capital	119,250.00
Surplus and Undivided Profits	54,417.02
Reserves	19,718.31
Interest Collected, Not Earned	2,068.46
Provision for Taxes, Expenses and Dividends	2,983.06
Total	<u>\$4,173,383.25</u>

Member Federal Deposit Insurance Corporation

OFFICERS

C. R. Yates, Chairman of Board
L. D. Milton, President
J. B. Blayton, Vice President
V. L. Brooks, Asst. Cashier
Mrs. N. B. Archer, Asst. Cashier