



Entrance to Lincoln University Campus

A Gateway
to
Opportunity and Service

Advantages Enjoyed by Lincoln University Students

The special advantages offered at Lincoln University, given here only in outline, are described more fully in the pages that follow.

1. Recognition of its degree by State departments of education and by graduate and professional schools.
2. Sound and practical education under teachers of specialized training and recognized ability.
3. Congenial and healthful surroundings amid the beautiful hills of Chester County, Pennsylvania.
4. Strategic location, in the North, but at the gateway to the South, and midway between the cities of largest population.
5. Strong Christian influences making for the development of a manly type of character and of the spirit of service.
6. A representative student body, drawn from all parts of the country, encouraging breadth of outlook and sympathy.
7. Leadership of Lincoln University alumni, inspiring the undergraduate to high ideals of achievement and usefulness.

WHAT
Lincoln University
OFFERS TO
Well Prepared Students

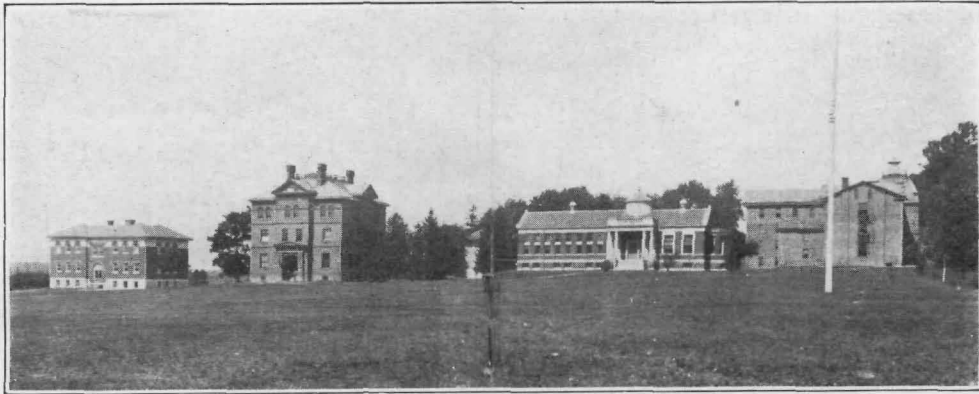


The American College is now recognized everywhere as a necessity in the life of the nation, as an economic as well as a cultural asset which increases the wealth of the community and of the country.

College education, formerly a luxury for the few, has become a necessity for every ambitious young man who would make the most of himself in the way of personal development and of contribution to the life of his generation.

The alert high school student is quick to discern the trend of the times, as he sees written before the doors of opportunity in business and professional life the words, "None but college graduates need apply." He sees that the road to professional success, to business opportunity and advancement, to social prestige, to a useful and influential position in the community, leads through the College, and he is determined to secure a college education at whatever cost or sacrifice.

LINCOLN UNIVERSITY, founded more than seventy-five years ago, as "an institution of learning for the scientific, classical and theological education for colored youth of the male sex," has specialized in training for leadership, and offers exceptional opportunities for bright and ambitious students who wish to make the most of themselves and to contribute something worthwhile to the life of society.



Campus View, Lincoln University

A Glance Backward

The institution was founded by Rev. John Miller Dickey, a Presbyterian minister of Oxford, Pennsylvania, and was granted its first charter April 29, 1854, under the name of "Ashmun Institute." In 1866 a new charter was granted, and the name was changed to "Lincoln University." The College of Liberal Arts and the Theological Seminary are the departments of the University.

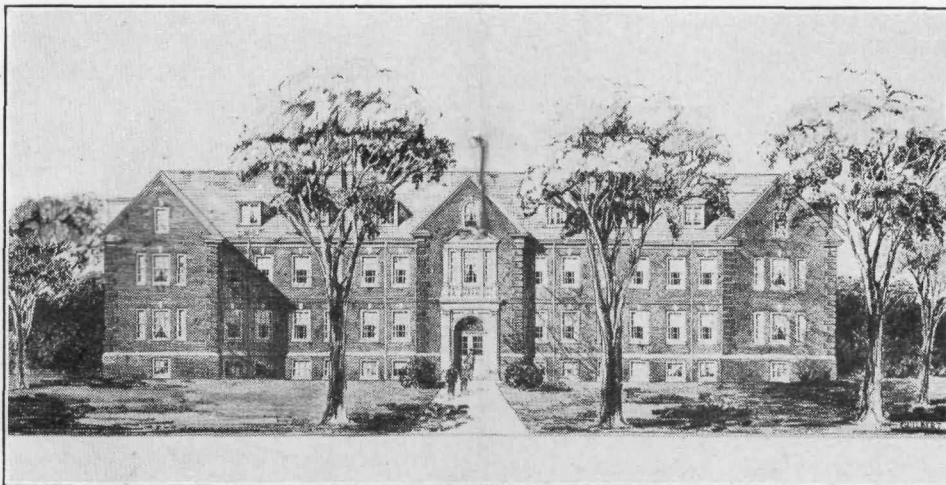
Academic Standing

The College department is recognized as a fully accredited college by the Association of Colleges and Secondary Schools of the Middle States and Maryland. Lincoln University is a member of the Association of American Colleges.

The University's degree is accepted for a teacher's certificate by the educational authorities of Pennsylvania, New York and other States. Lincoln University graduates gain admission into professional schools and graduate departments of the leading universities of the country.

Sound and Practical Training

The educational work of Lincoln University is in the hands of skilled and sympathetic teachers who are specialists in their respective fields. On the teaching staff are a number of men who have the Ph.D. degree and are members of Phi Beta Kappa. The training at Lincoln University has two supreme ends in view—the development of the power of initiative and leadership, and the cultivation of the spirit of service.



New Dormitory, Lincoln University

Healthful and Congenial Surroundings

Lincoln University is situated on high ground in a beautiful natural setting among the hills and rich farmlands of Chester County, Pennsylvania. With bracing air, an abundance of pure water from artesian wells, and every encouragement for physical exercise and athletic sports, the conditions are ideal for a wholesome and happy campus life and the development of a sound mind in a sound body. Lincoln University offers special attractions for the studious man who wishes to be free from the distractions of city life. -

Strategic Location

Lincoln University is on the Baltimore Pike (Route No. 1), and the campus is one-half mile from the "Lincoln University" station on the Pennsylvania Railroad (Octoraro Branch), forty-five miles from Philadelphia. The post office has the same name. Recent movements of population have given to Lincoln University a strategic position. It is midway between the four largest centers of colored population in the world—New York, Philadelphia, Baltimore and Washington; and is easily accessible to all of them. It is at the gateway to the South, and yet near to the eastern resorts, where students find employment in vacation time, and near to the institutions where many graduates go for professional study.

Strong Christian Influence

The aim of Lincoln University: has been to train the heart and character as well as the mind. A strong and pervasive Christian influence characterizes its training. The Bible is studied and honored, and its teachings set forth as a guide to a successful and useful career. Throughout its history the University has stood for a manly type of Christian character, and a religion that has proved a dynamic in the life of its graduates, sending them out with an ambition to do something worthwhile and to serve their generation and their country. The "Lincoln Spirit" is the spirit of service.

Representative Student Body

It is believed that no institution in the country of similar size draws its students from a wider area than Lincoln University. Of the 361 students enrolled in 1930-31, New England States furnish 18; Middle Atlantic States, 160; East North Central States, 14; South Atlantic States,

140; East South Central States, 10; West South Central States, 7; Foreign Countries, 10.

Contact between students of alert mind from different sections of the country or foreign countries discourages provincialism and produces breadth of outlook and sympathy. The friendships formed at Lincoln University are an asset in after years in professional, business and social life.

Record of Lincoln Alumni

The graduates of Lincoln University stand out in their communities as prominent, successful and influential men, and justify the estimate of Booker T. Washington, who said: "The Negro race and the American people owe a great debt of gratitude to Lincoln University;" and of his successor, Dr. Robert R. Moton, who said, in October, 1927, "No educational institution in America, and I make no exceptions, is more highly honored in the character and achievements of its graduates than is Lincoln University. Their names stand out at the front with brilliant distinction. They stand at the front in every community; they are leaders in every line of endeavor; they are identified with every movement working for the development of their people."

Contact with men of this calibre is an inspiration to Lincoln undergraduates and an incentive to prepare themselves for lives of usefulness and achievement.

What Lincoln Men Have Done

Among the 2,500 men that Lincoln University has sent out in its more than seventy-five years of service are five bishops of the Methodist Church, and leading pastors in the Presbyterian, Baptist and Episcopal churches; the only colonel of his race in active service on the Western Front in France, and one of the two colored men who sat in the Peace Conference at Versailles; leading physicians in all the great centers of population, and two of the three surgeons mentioned in the "Negro Year Book" as having a national reputation; five college presidents and a number of college deans, the president of the Colored Teachers' Association of Georgia and the State Superintendent of Education in West Virginia; two United States ministers to Liberia, one congressman, five members of State legislatures and several city aldermen, and two men who in National Republican Conventions seconded the

nominations of President Roosevelt and President Coolidge respectively, and the recent winner of the Harmon Prize in Literature. The record of its graduates testifies to the thorough and practical character of the educational work of Lincoln University.

New College Dormitory

A new and commodious Dormitory is being erected on the campus and will be ready for occupancy in September, 1931. It will be the handsomest building on the campus, thoroughly modern in all its appointments, with provision for a reception room, recreation rooms, barber shop, trunk room and pressing room.

Extra Curricular Activities

These include all the activities found in the usual American college. Social life finds expression in the fraternities, intellectual life in the literary and scientific and dramatic clubs, religion in the Y. M. C. A., and other forms of religious culture, journalism in the "*Lincoln News*," and athletic ability in intercollegiate and intramural sports, football, baseball, basketball, track, soccer, tennis and gymnastics. Debating teams each year meet with representatives of leading institutions in this country and abroad. The Music Club of more than thirty members gives concerts in various cities, and in the past two years has taken trips reaching to Boston on the east and Tuskegee Institute in the south.

Premium on Scholastic Ability

The number of applicants in recent years has far exceeded the number that can be accommodated, and Lincoln University has been compelled to select the men who show most promise and have stood high in their classes. Special attention will be given to students who stand in the upper third of their classes in high school or academy, and early application should be made to ensure admission.

Information

Full information about requirements for entrance to the College Department, and about fees, scholarship aid and opportunities for work, may be obtained from the Catalogue and by applying to the President,

WM. HALLOCK JOHNSON,
Lincoln University,
Chester County, Pennsylvania.

FA01-4
K13