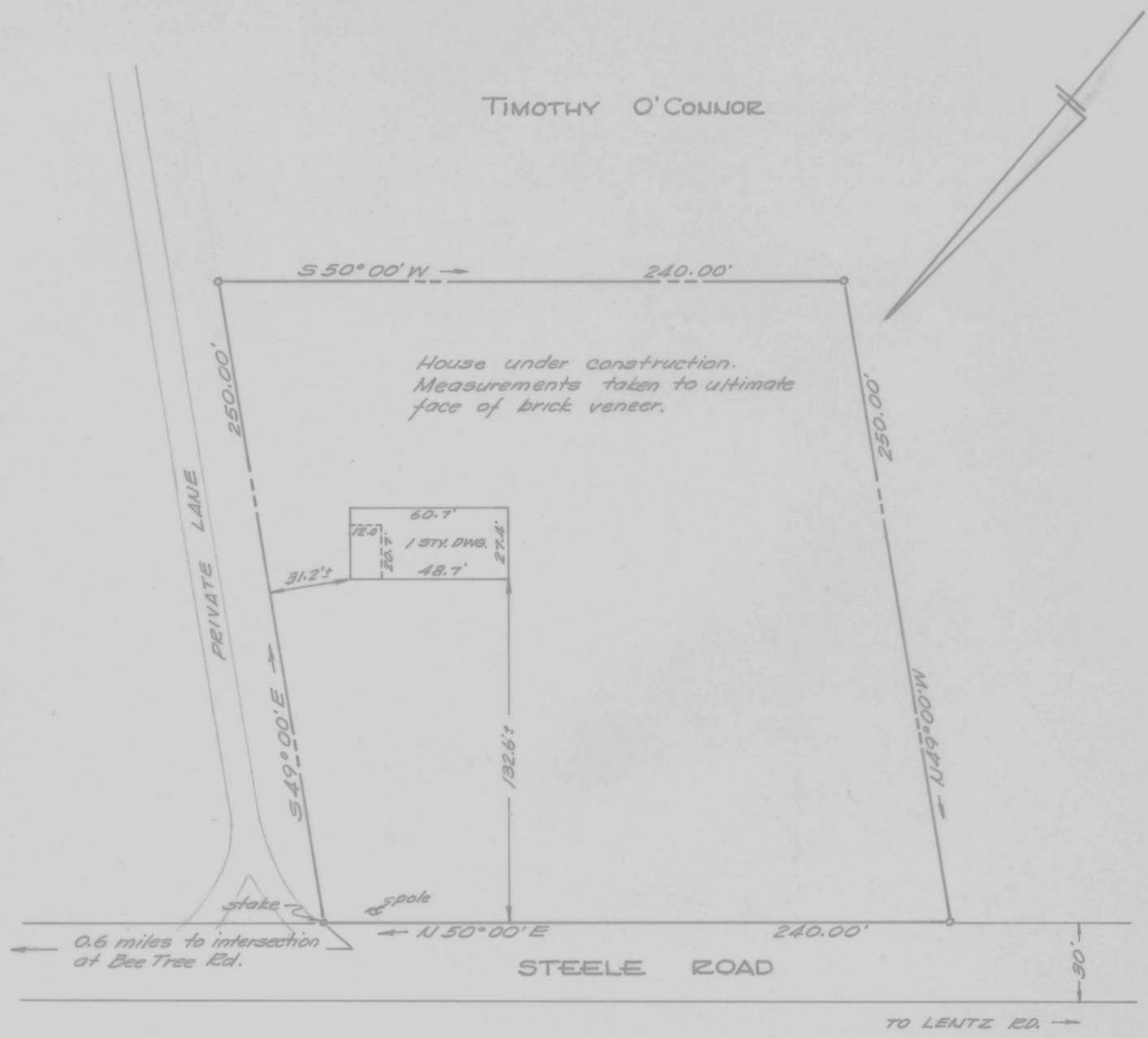


TIMOTHY O'CONNOR



IMPROVEMENTS LOCATION  
 BLASE R. MAFFIA LANDS  
 1<sup>ST</sup> DISTRICT, CAROLINE COUNTY, MD.  
 Scale 1" = 60' Nov. 1964.

This is to certify that the improvements indicated hereon are located as shown.

William R. Nuttle  
 William R. Nuttle, Reg. Surveyor  
 Chestertown, Md.