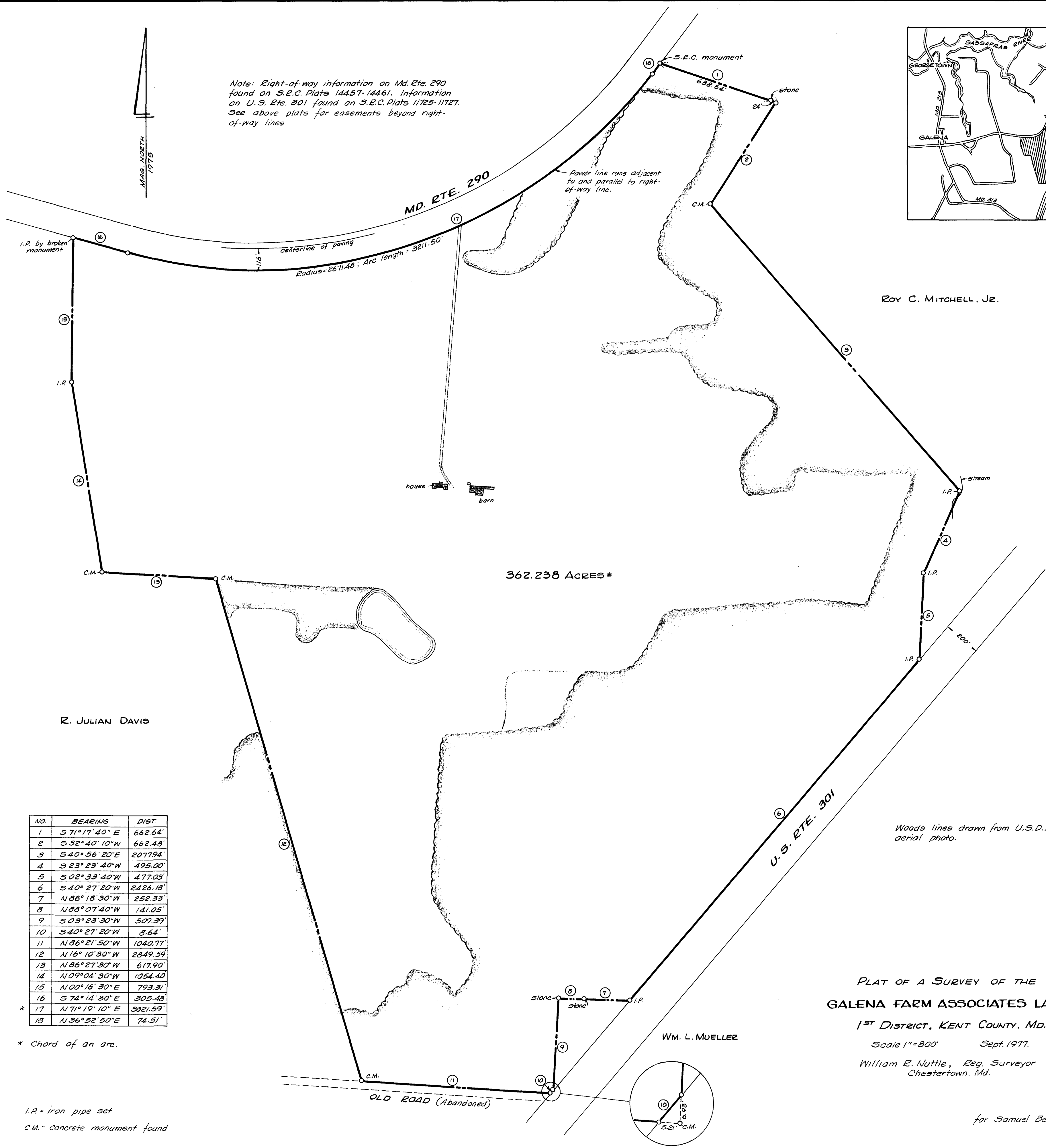
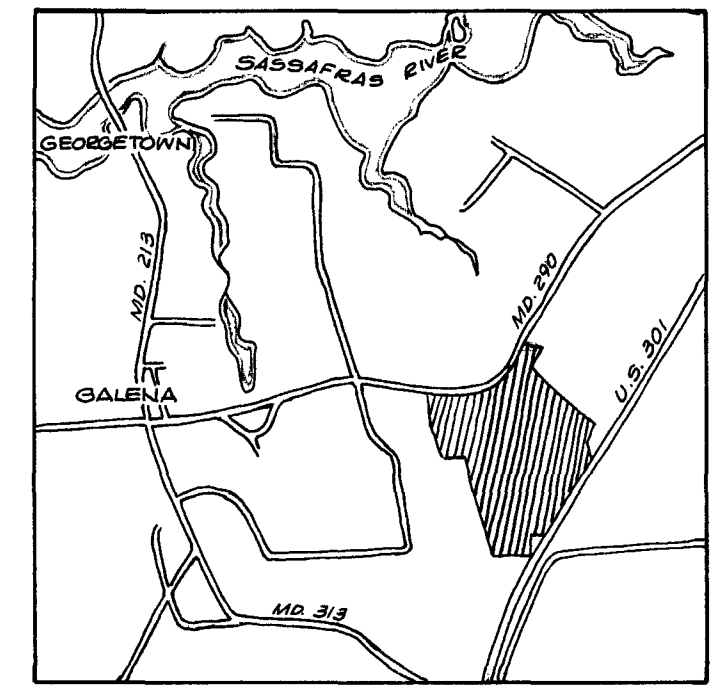


MAS. NORTH
1975

Note: Right-of-way information on Md. Rte. 290 found on S.R.C. Plats 14457-14461. Information on U.S. Rte. 301 found on S.R.C. Plats 11725-11727. See above plats for easements beyond right-of-way lines



ROY C. MITCHELL, JR.

362.238 ACRES ±

R. JULIAN DAVIS

NO.	BEARING	DIST.
1	S 71° 17' 40" E	662.64'
2	S 32° 40' 10" W	662.48'
3	S 40° 56' 20" E	2077.94'
4	S 23° 23' 40" W	495.00'
5	S 02° 33' 40" W	477.03'
6	S 40° 27' 20" W	2426.18'
7	N 88° 18' 30" W	252.33'
8	N 88° 07' 40" W	141.05'
9	S 03° 23' 30" N	509.39'
10	S 40° 27' 20" W	8.64'
11	N 86° 21' 50" W	1040.77'
12	N 16° 10' 30" W	2849.59'
13	N 86° 27' 30" W	617.90'
14	N 09° 04' 30" W	1054.40'
15	N 00° 16' 30" E	793.31'
16	S 74° 14' 30" E	305.48'
17	N 71° 19' 10" E	3021.59'
18	N 36° 52' 50" E	74.51'

* Chord of an arc.

I.P. = iron pipe set
C.M. = concrete monument found

Woods lines drawn from U.S.D.A. aerial photo.

PLAT OF A SURVEY OF THE
GALENA FARM ASSOCIATES LANDS

1ST DISTRICT, KENT COUNTY, MD.

Scale 1"=300' Sept. 1977.

William R. Nuttle, Reg. Surveyor
Chestertown, Md.

WM. L. MUELLER

for Samuel Beachy

