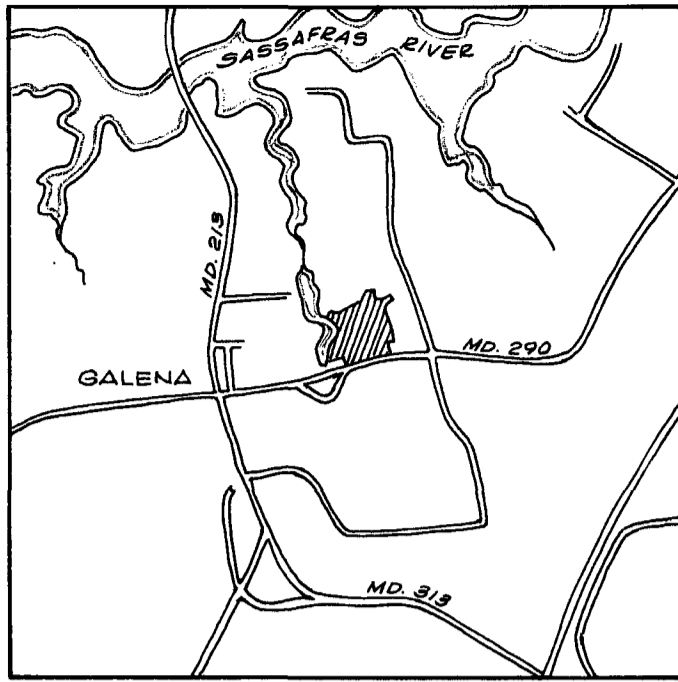
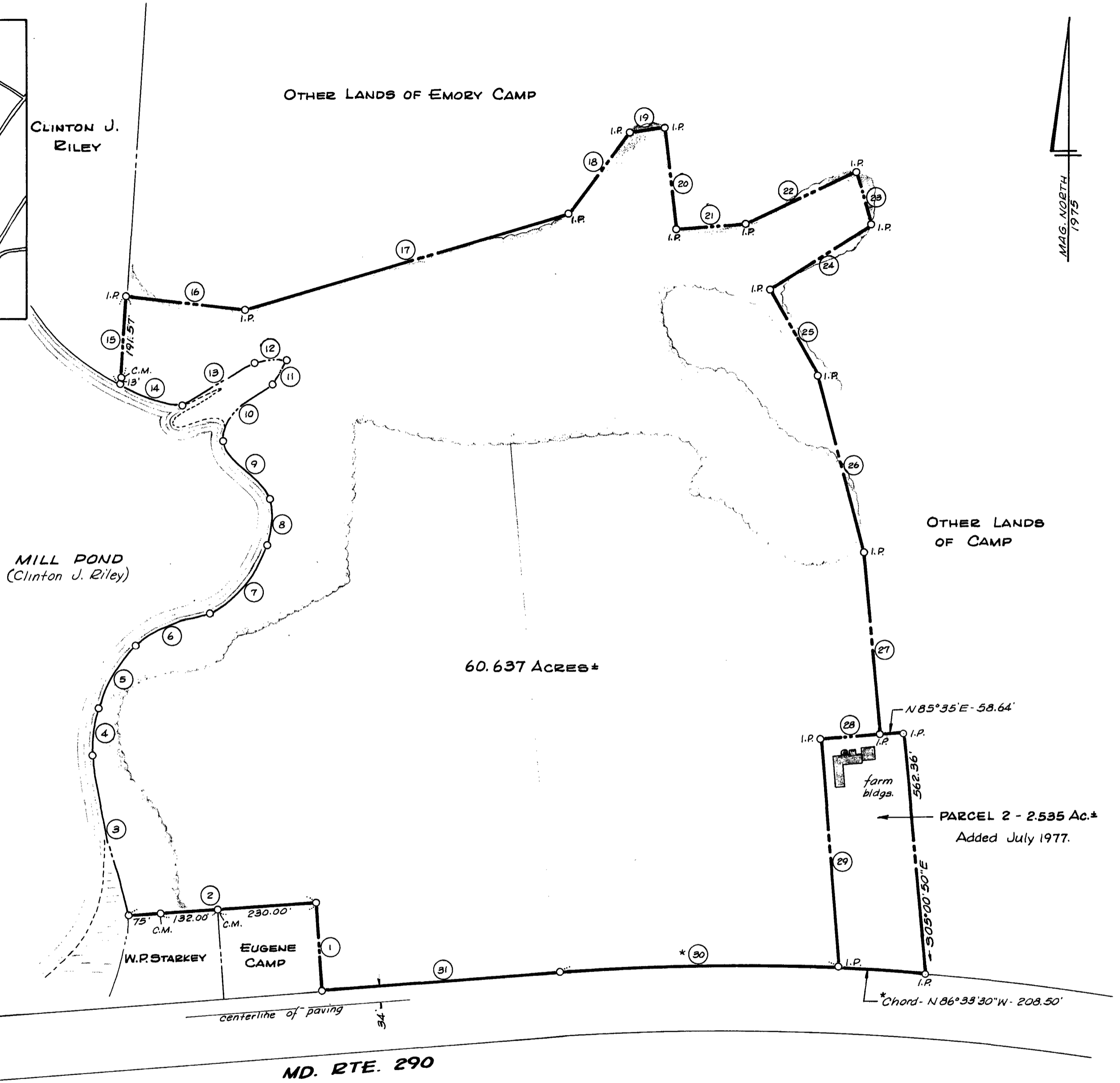


MAG. NORTH
1975



CLINTON J. RILEY

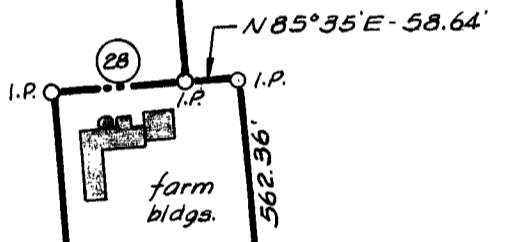
OTHER LANDS OF EMORY CAMP



MILL POND
(Clinton J. Riley)

60.637 Acres±

OTHER LANDS
OF CAMP



PARCEL 2 - 2.535 Ac.±
Added July 1977.

*Chord - N 86° 33' 30" W - 208.50'

NO.	BEARING	DIST.
1	N 04° 24' 00" W	204.65'
2	S 85° 36' 00" W	437.00'
3	N 12° 35' 50" W	383.44'
4	N 08° 35' 20" E	113.78'
5	N 31° 18' 00" E	169.15'
6	N 65° 51' 20" E	190.24'
7	N 39° 14' 40" E	208.50'
8	N 05° 01' 20" E	107.12'
9	N 40° 02' 40" W	177.47'
10	N 42° 22' 20" E	171.63'
11	N 29° 52' 00" E	69.40'
12	S 84° 11' 40" W	75.04'
13	S 60° 02' 10" W	192.42'
14	N 70° 52' 00" W	155.42'
15	N 03° 49' 10" E	204.57'
16	S 83° 16' 00" E	279.99'
17	N 73° 32' 10" E	787.36'
18	N 37° 00' 50" E	238.47'
19	N 79° 05' 30" E	83.40'
20	S 05° 47' 20" E	240.92'
21	N 85° 51' 10" E	161.52'
22	N 65° 15' 20" E	287.86'
23	S 15° 35' 30" E	129.25'
24	S 57° 32' 30" W	282.15'
25	S 29° 15' 30" E	231.40'
26	S 14° 22' 40" E	424.04'
27	S 04° 55' 00" E	427.85'
28	S 85° 35' 00" W	138.40'
29	S 04° 01' 40" E	533.83'
* 30	S 89° 06' 00" W	646.49'
31	S 85° 36' 10" W	558.09'

* Chord of an arc; radius = 5754.58'

W.P. STARKEY

EUGENE CAMP

MD. RTE. 290

Woods lines were taken from U.S.D.A. aerial photo.

Right-of-way information on Md. Rte. 290 found on S.R.C. Plats 14454-14455.

Lines 10-13 follow a small valley and represent land formerly covered by the mill pond. See descriptions in deeds RA5 23/205 and JFG 2/569.

C.M. = concrete monument
I.P. = iron pipe

PLAT OF A SURVEY OF PART OF THE
EMORY H. CAMP LANDS

1ST DISTRICT, KENT COUNTY, MD.

Scale 1" = 200' Nov. 1975.

William E. Nuttle, Reg. Surveyor
Chestertown, Md.



Maryland State Archives