

75-84

Treasury Department,  
U. S. COAST AND GEODETIC SURVEY,

Superintendent.

55825

States; Pa. - Md.

# SKETCHBOOK.

## ABSTRACT OF CONTENTS:

Mason and Dixon Line  
Beginning at M.P. Post 84  
and working eastward to  
M.P. 75

1901

CHIEF OF PARTY:

W. C. Hodgkins.

Vols.

Vol. 7

U. S. C. & G. SURVEY,  
LIBRARY AND ARCHIVES.

AUG 17 1903

Acc. No. 55825

Treasury Department,  
U. S. COAST AND GEODETIC SURVEY,

*O. H. Fittmann*, Superintendent.

States: *Pa. - Md.*

# SKETCHBOOK.

## ABSTRACT OF CONTENTS:

*Topography along Mason and  
Dixon's Line, from Milepost 84,  
at eastern base of Blue Ridge  
near Finmitsburg, eastward to  
the road east of Milepost 75.*

1901

CHIEF OF PARTY:

*W. C. Hodgkins*

19 Vols.

Vol. 7



BS 1130 ft EX 1-26'

1130.4  
28.3



EX 32'  
FS 1301 ft  
202.1

1.9

Creek

Tom's

288 ft  
234 ft

1.27  
1.24

864.5  
629.01

XP

Boundary

898

SD

289 20'

246 ft

689 ft  
805 ft  
800 ft  
810 ft  
815 ft

890 ft  
800 ft

378 ft  
760 ft  
256 ft

200 ft



336° 760 ft  
340° 20' 8 ft  
WM 344 25

625 | 336° 30'

3150 ft 202 ft

204 ft 3330

FS 298 ft 299 ft

EX 25' 2.2

Kuppe 340

58 ft Tuffen

BS 424 ft d 120° 424.9

17.9

AX 20' 25'

114 ft 298 20'

175 ft 286° 15'

55 ft 246 20'

110 ft 215 45'

85 255 ft 2537

EX 50' 35' 200'

369.0

FS 368 136

d 47'

226 ft 336 40'

225 ft 332 30'

225 ft 325 10'

225 ft 206

280° 10'

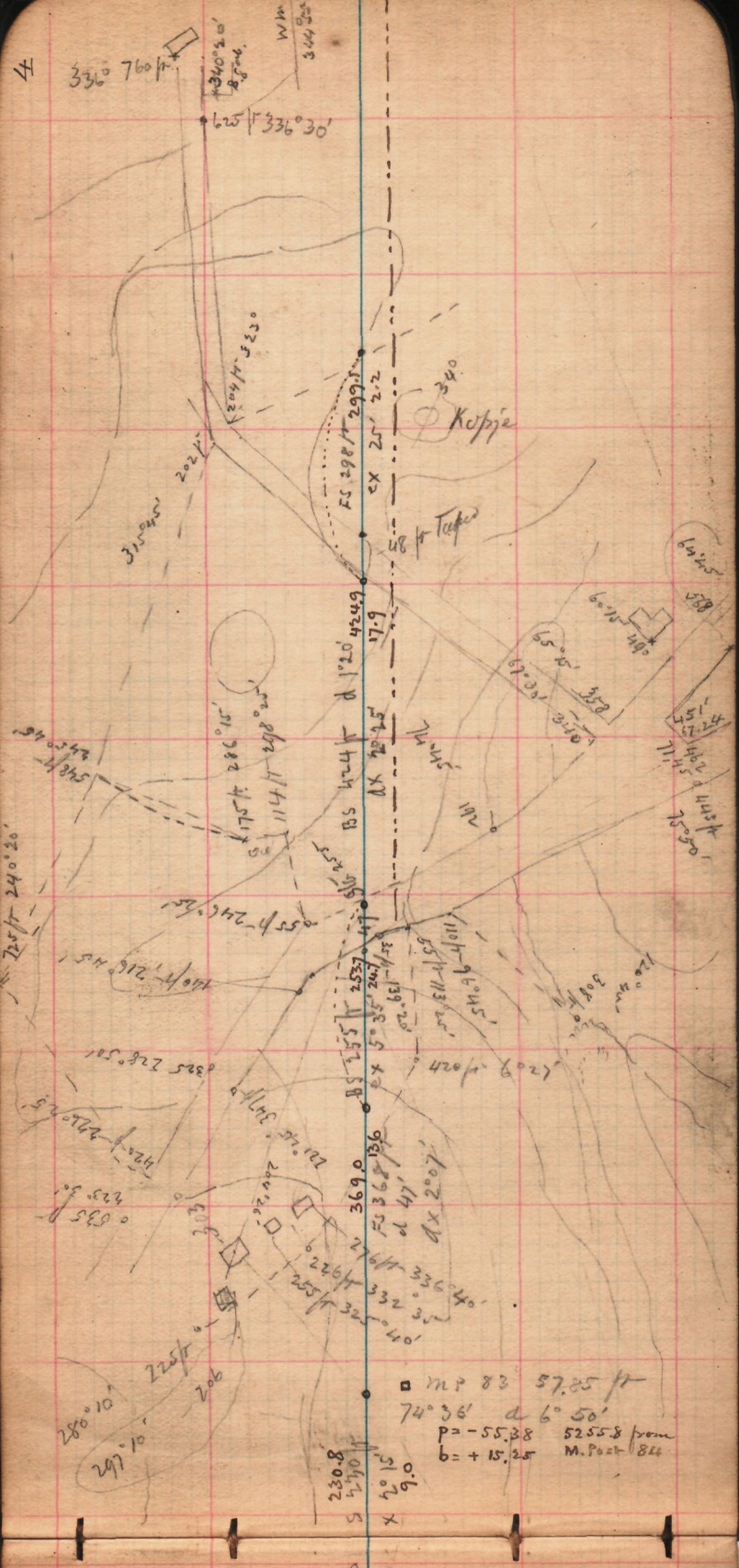
297° 10'

230.8

S 5 270 ft

X 20' 15' 9.0

MP 83 57.85 ft  
74° 36' d 6° 50'  
p = -55.38 5255.8 from  
b = +15.25 M. Post 844











Nov. 26 am. cold - cloudy - drifting snow

145°30'

550 ft

992 feet from 266°

St. 5 ft from creek in W. 1/2

124°45' - 232  
115°25' - 292

97°45' - 305  
102.16

197 ft - 73°10'  
390 ft - 152°45'

255 ft - 139°45'  
142 ft - 151°40'

142 ft - 314°30'

127 ft - 309°25'

122 ft - 242°20'

125 ft - 281°

331 ft - 242°

162 ft - 312°45'

322 ft - 293°

333 ft - 265°15'

313 ft - 272°15'

St. 400 ft

0°10' - 314°

1305 ft - 9°40'

297 ft - 2°40'

225 ft - 13°

422 ft - 62°30'

570 ft - 65°30'

570 ft - 70°30'

400 ft - 112°20'

535 ft

550 ft

600 ft - 109°

365 ft - 64°

250 ft - 45°

AX 294 ft

BS 270 ft

BS 270 ft

BS 270 ft

BS 270 ft

BS 270 ft

BS 270 ft

BS 270 ft

BS 270 ft

BS 270 ft

BS 270 ft

BS 270 ft

BS 270 ft

BS 270 ft

BS 270 ft

BS 270 ft

BS 270 ft

BS 270 ft

BS 270 ft

BS 270 ft

BS 270 ft

BS 270 ft

BS 270 ft

BS 270 ft

BS 270 ft

BS 270 ft

11.30 550 ft  
AX 3-30

155.10-101.55

188.0-112.20

142

112

112

112

112

112

112

112

112

112

112

112

112

112

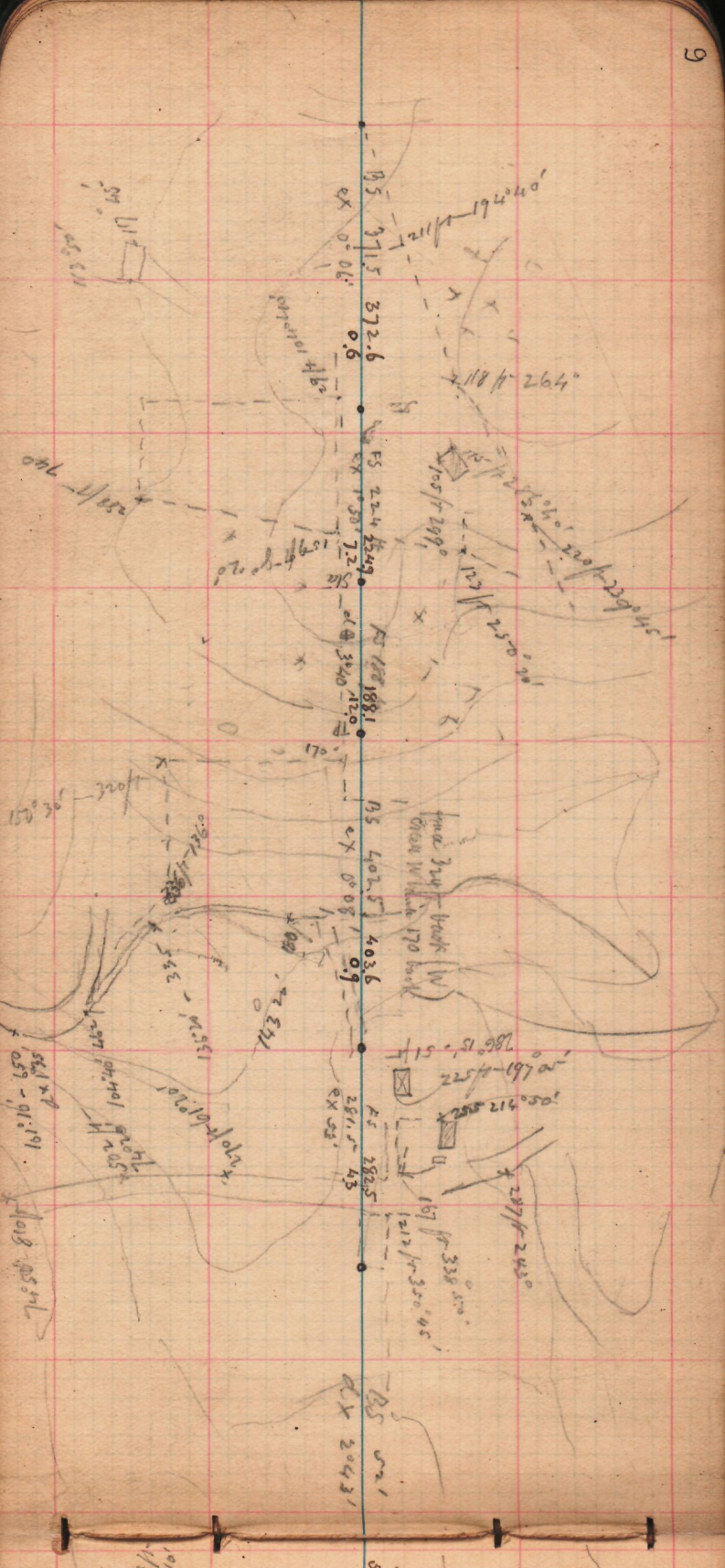
112

112

112

112

112



620 ft  
320 ft

334 ft 130° 05'

392 ft

528 ft  
450 ft

254 ft  
311° 50'

270.5  
271.6

293  
160  
50  
272

38-10-367 ft

M 181

129.9  
15129 ft

18.8  
ex 18.8  
4.4

352 ft 109°

510.4

B3 516 ft  
dx 2.07

335 ft  
400 ft

440 ft 286.20

229.9  
229.9  
226  
226  
226

229.9  
ex 10.29  
7.3

313 ft  
124° 16'

191.1  
B3 190 ft  
ex 7.1

343.5 ft  
174

214 ft 23° 15'

352 ft  
604 ft

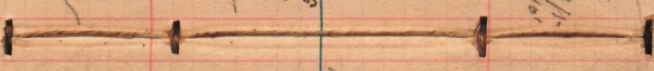
179.3  
B3 178.5  
ex 2.23  
7.4

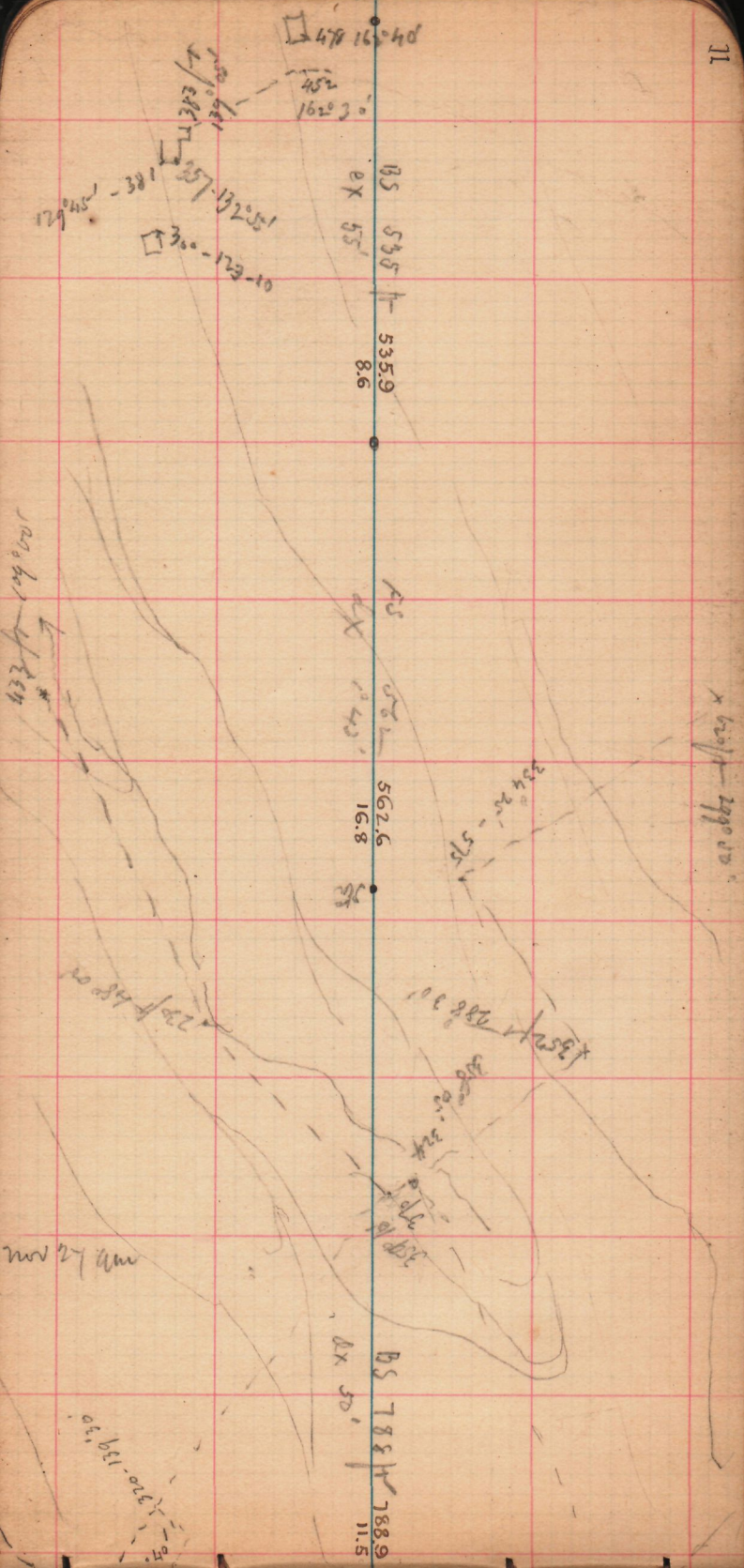
Int Sta.

235° 50' - 50 ft

520.9  
24.7

333 ft  
124 ft





478 16 40

452  
162° 30'

139° 50'  
139° 50'

129° 45' - 381

132° 51'

300 - 123 - 10

BS 535  
EX 55'

535.9  
8.6

AS  
EX 1240'

562.6  
16.8

234° 25' - 575'

600' - 1990'

135° 21' 288.0'

218° 05' 324'

BS 788  
EX 50'  
788.9  
11.5

1000 ft  
1234

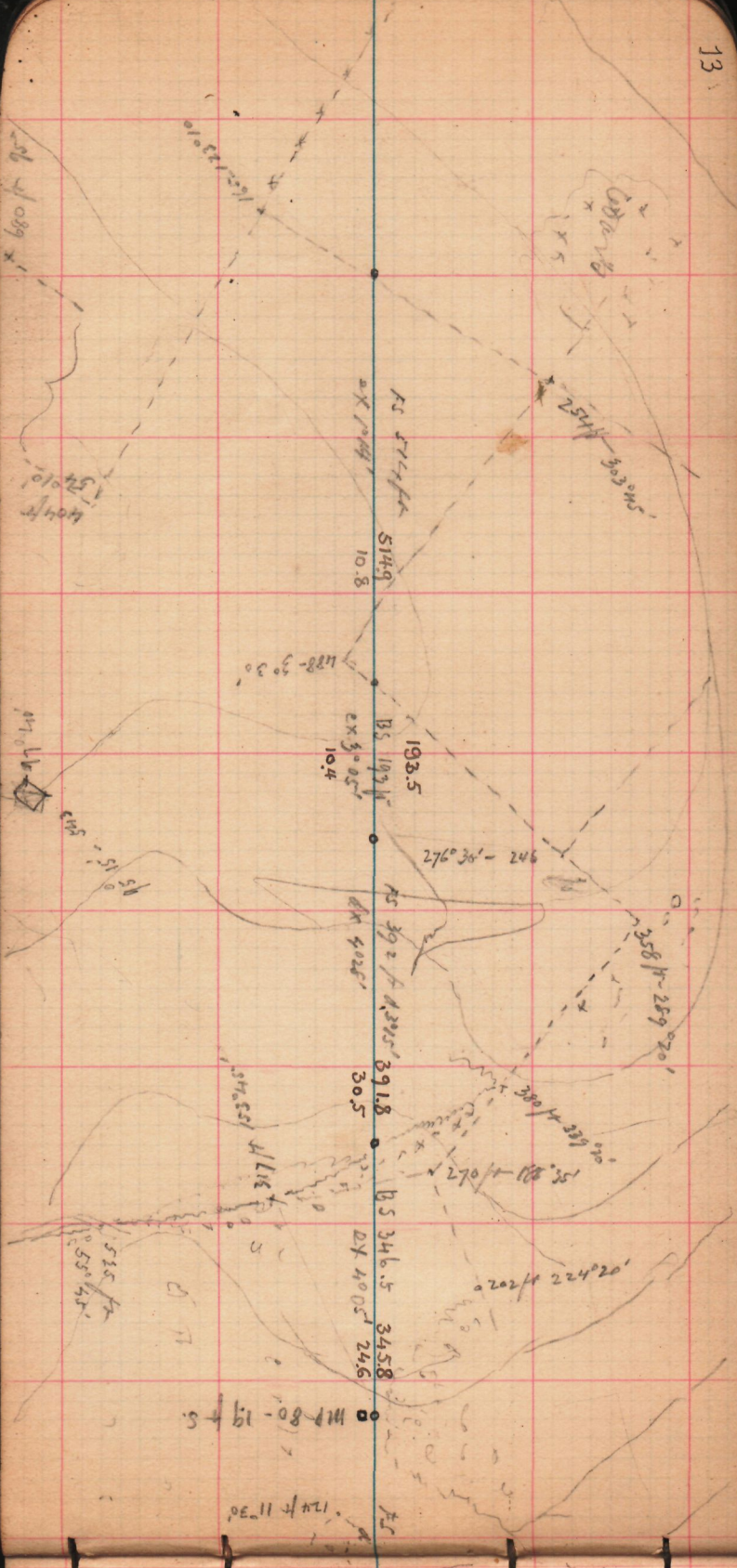
220 ft  
162

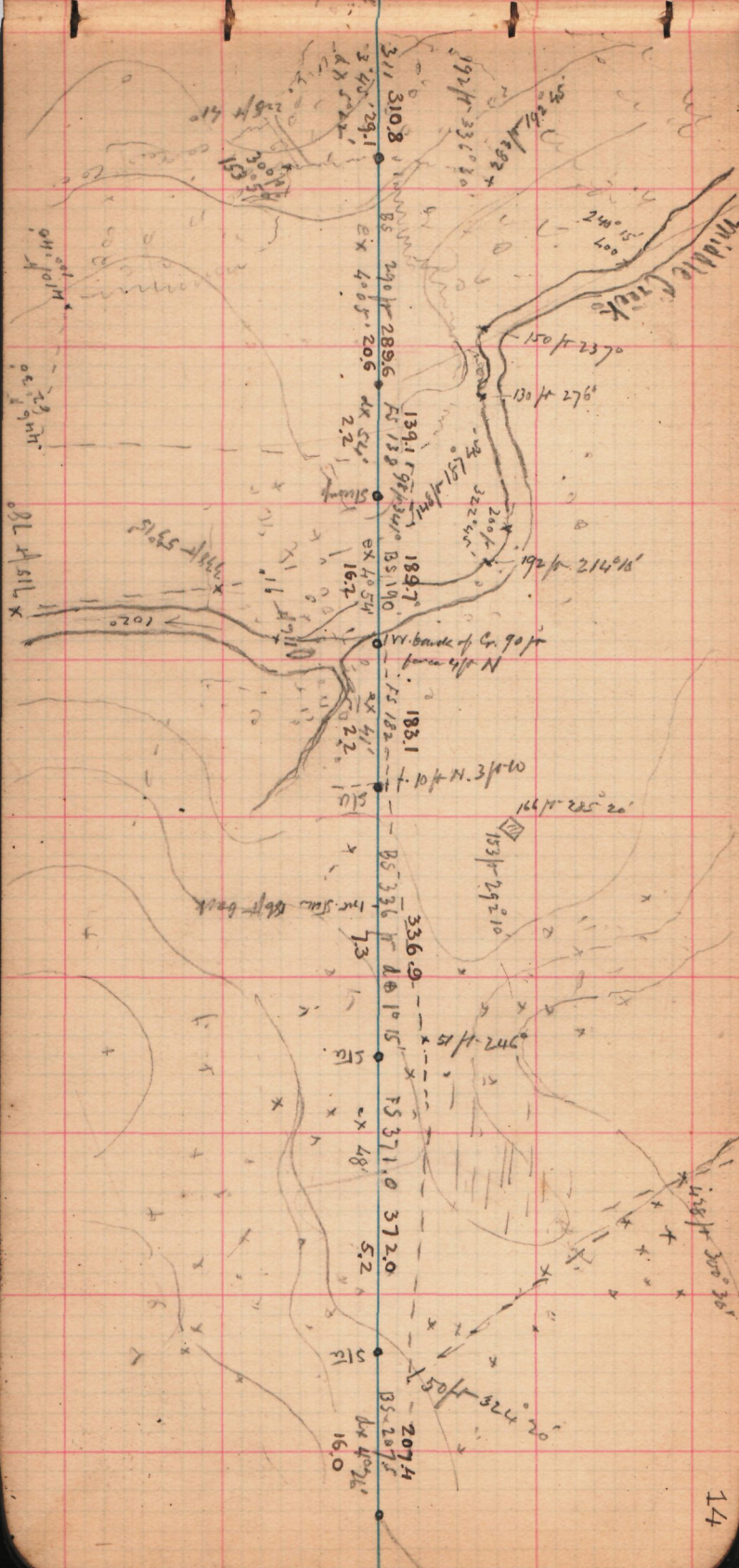
Nov 27 am

1320 - 139 30

Nov. 27<sup>th</sup> A.M.









Jan 25/11 N

112/1-352°30'

369 ft  
24.4  
368.5

90° - 1.0 ft

BS 313-ft 333.7  
11.5  
26/1-228°40'

PS 216.5  
12.8  
217.2

267°50'00"

BS 649 ft  
21.5  
649.4

153/1-951°15'

Rock 14 1/2 ft back

90° 2.0 ft

Site 2 ft 5 ft pressure cut  
on 3 ft S of Normal

278/1-325°

1793 ft  
1733 ft  
1730 ft  
1730 ft

1450 ft  
233°45'

bed

Plot



Sta. next E. of MP 79

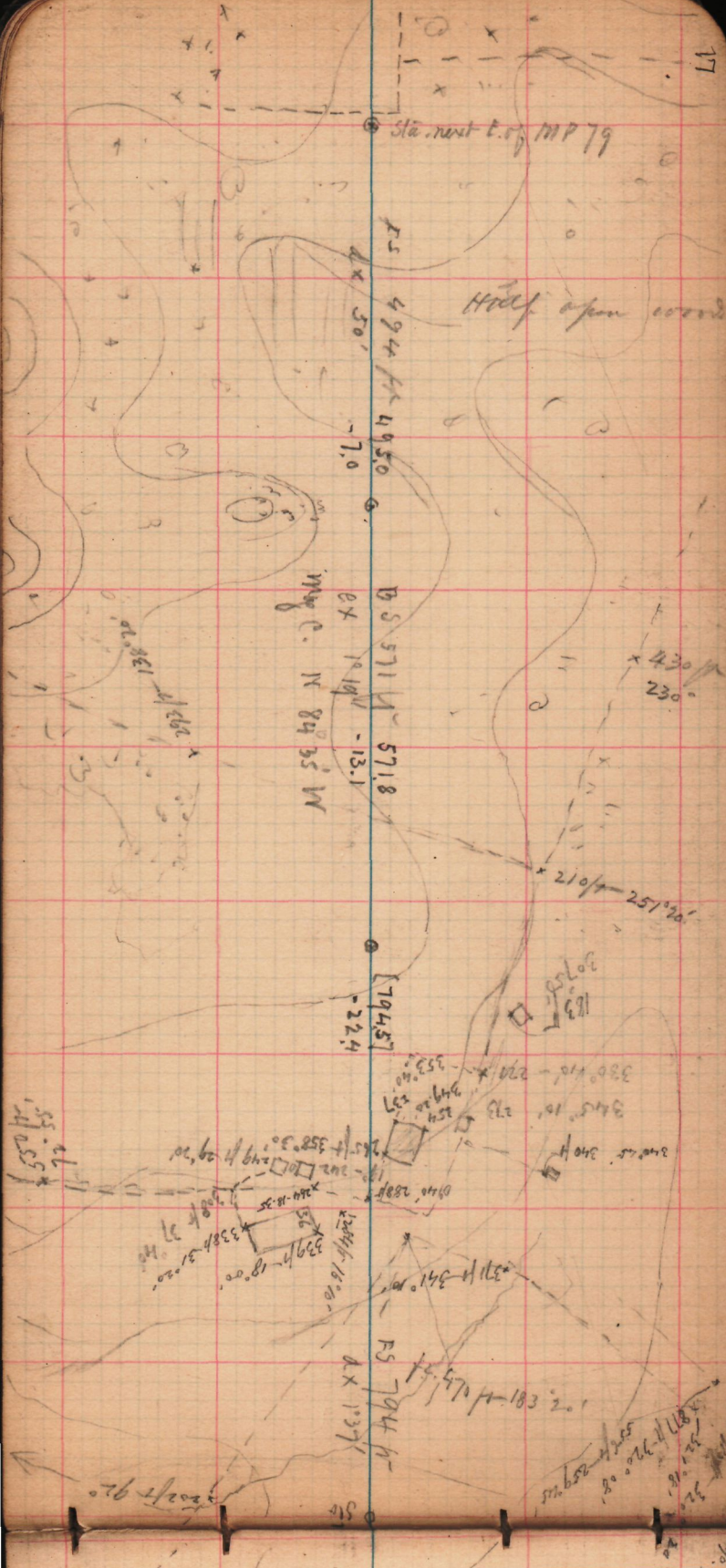
Half open woods

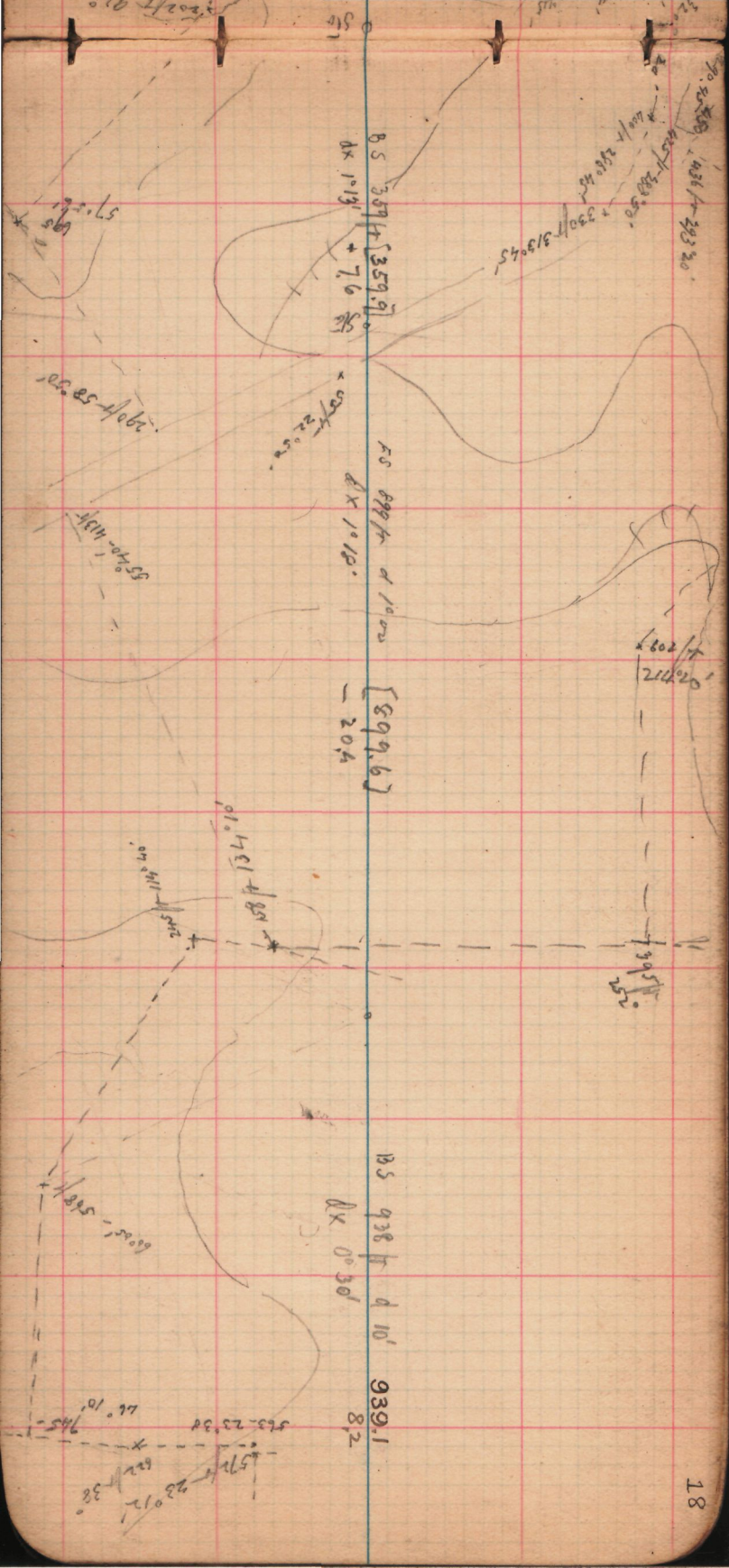
FS 494 N - 495.0  
dx 50' - 7.0

BS 571 N - 571.8  
dx 19.1 W - 13.1  
Mag. C. N 84° 35' W

[79457]  
- 22.4

FS 794 N  
dx 13.7





240' 70' 50' 100'

556  
240'

522' 1" 30' 10"

545' 308' 20'

West-180°

Line 3 ft. S. of normal

Gravel

PS 976/4 - Δ 25'

Δx 0° 43'

977.0

12.2

b. 472  
p. 597

308' 20' 75' 4

5054

25.6

PS 415 - Δ 20'  
155' 10" S. of line  
[2655]

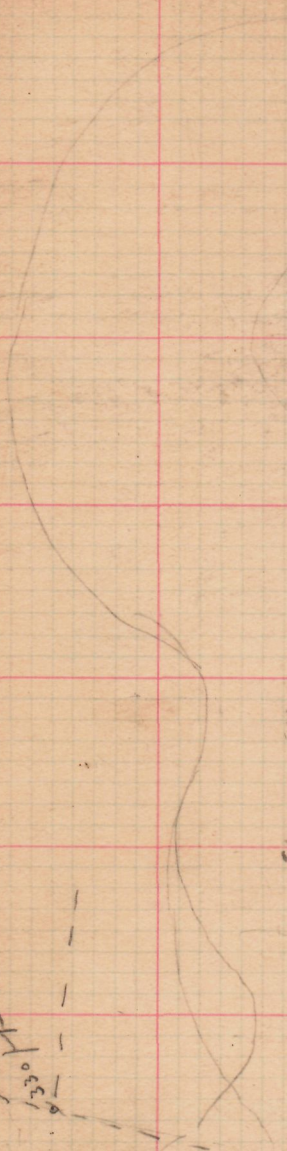
BS 5054 - Δ 12'  
Δx 20' 54'

78

292' 30'

30' 10" 101' - Δ 0° 31'

30  
30  
30



4172  
58° 50'

Here offset  
3 ft N., bringing  
us back to the  
normal line

175° 55' - 43 1/2'

220 ft

20190

465  
972  
562  
398  
397

472 ft  
dx 3° 20'

17° 15' 39 ft

19° 21' 24" 1059

20° 32' 24" 1137

540 ft 200'

969.8  
56.4

175° 24' 42"

111 ft 301' 30"

BS 562.1 ± 5'  
dx 25' 5.7

563.1

579.1

181 ft 1/2

118° 50' 43 ft  
118° 50' 43 ft

FS 398 dx 40' 399.0  
dx 1° 53'

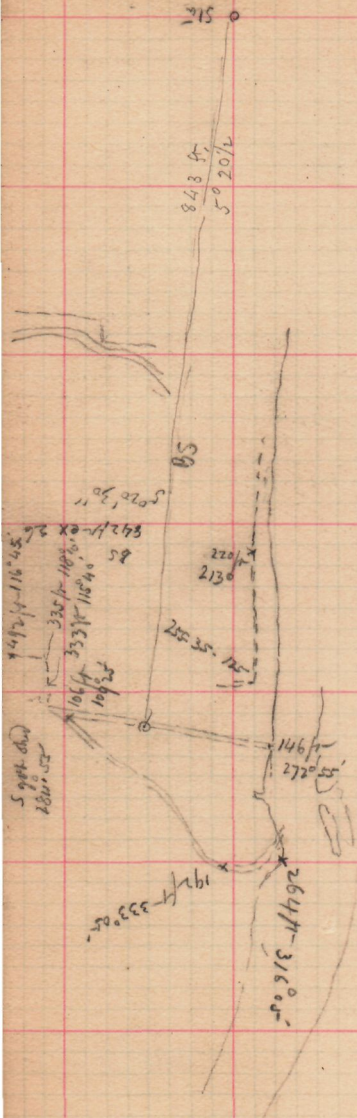
13.1

145 ft  
20190  
528  
165 ft

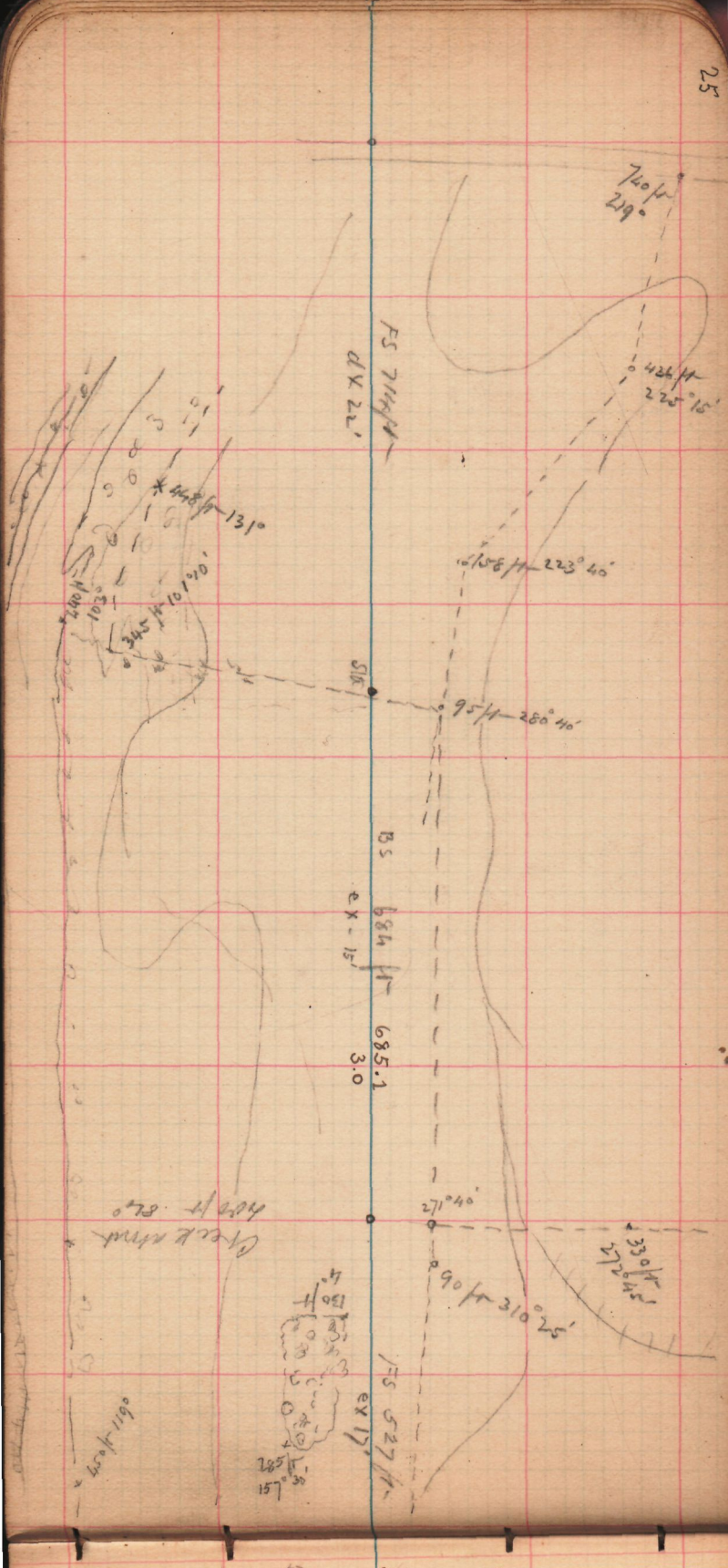












Creek mouth  
400 ft. etc.

FS 7144N  
dx 22'

BS  
684 ft - 685.1  
EX - 15'  
3.0

FS 527N  
EX 17'

760 ft  
219°

426 ft  
225° 15'

6158 ft  
223° 40'

95 ft  
280° 40'

\* 448 ft  
131°

330 ft  
272°

90 ft  
310° 25'

40 ft  
151°

6611 ft  
400 ft

385 ft 94°

528.1  
2.6  
BS 31.7  
EX 15'  
1.6  
M.P. 5.83° 30'  
FS 30.6  
EX 6'  
0.5  
BC 9883 (toped)  
EX 56'  
1.7 ft  
567.0  
9.1  
106.411  
M.P. 76  
265° 34' 30.3 ft (toped)  
[127.4 N. of normal base]  
BS 27.0  
EX 4'  
121.1  
EX 4'  
15120 ft  
EX 0.1  
M.P. 97.18  
N. of normal

fence left N

284° 40' 39 ft

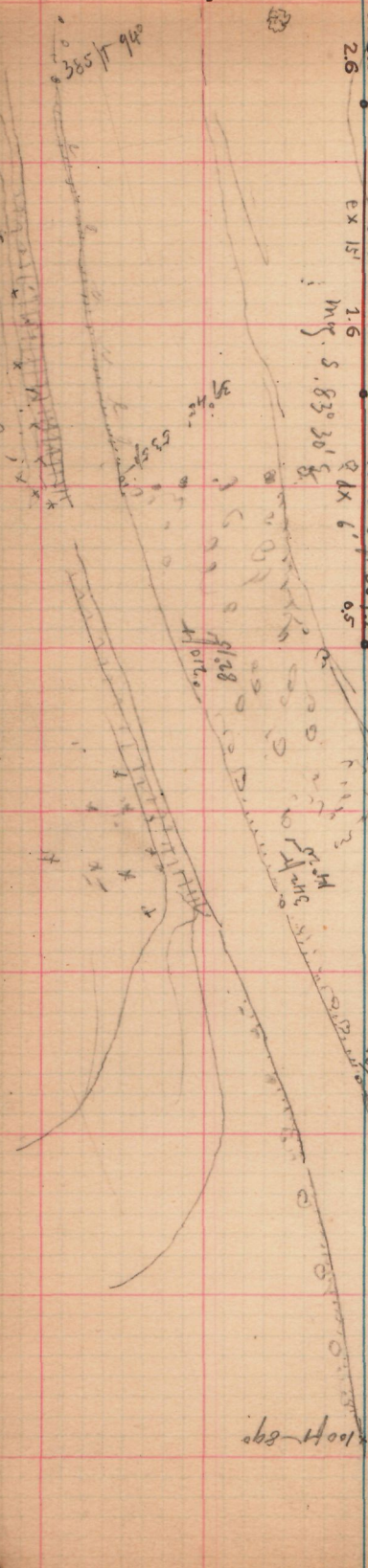
p = 96.18  
b = 22.17

282° 17' 30"

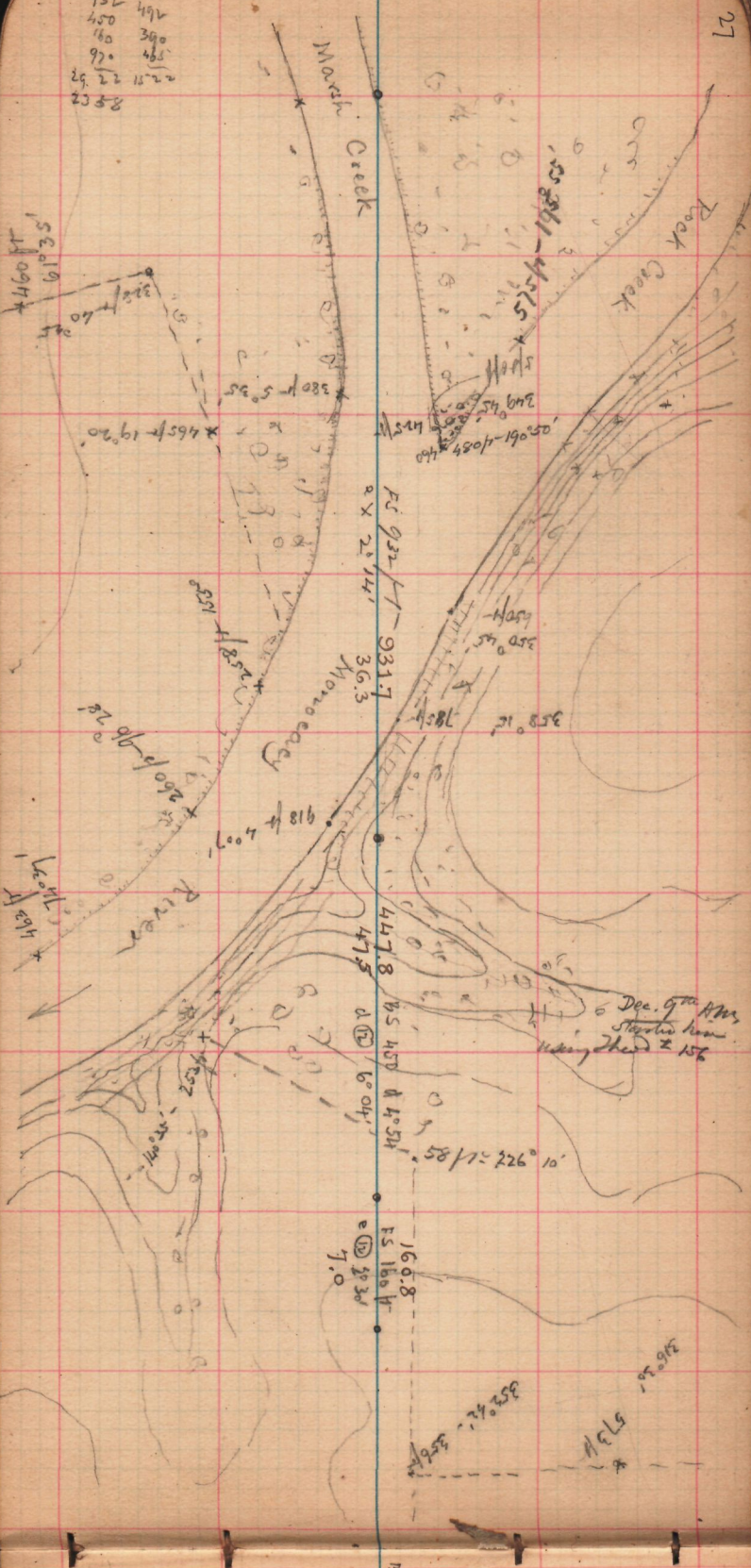
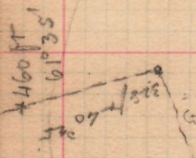
EX 55'  
FS 566 ft

p = 30.21  
b = 2.3

76



390	175
932	494
450	390
180	465
920	194
29	22
23	11
23	8



Sub Station

Stake on line about 17' S. of here

BS 970  
S 72.1° 04' E 26.8  
d (12) 10 35'

52.101 4/57

55.175 176.0  
d (12) 10 44'

BS 401  
S 83.1° E 4.3

FS 399.5 390.3  
d (12) 10 39' 11.2

288 02' 885

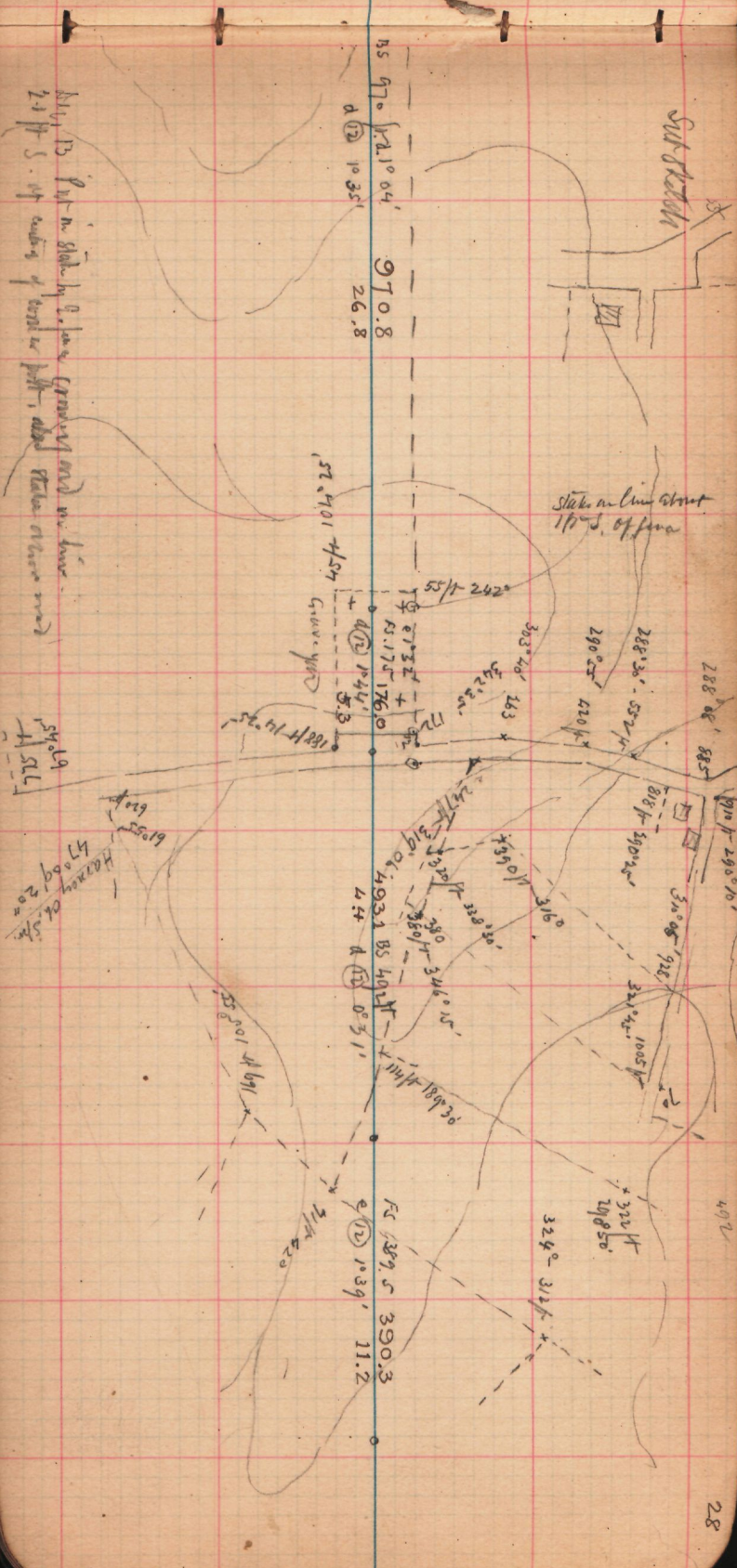
290° 10'

492

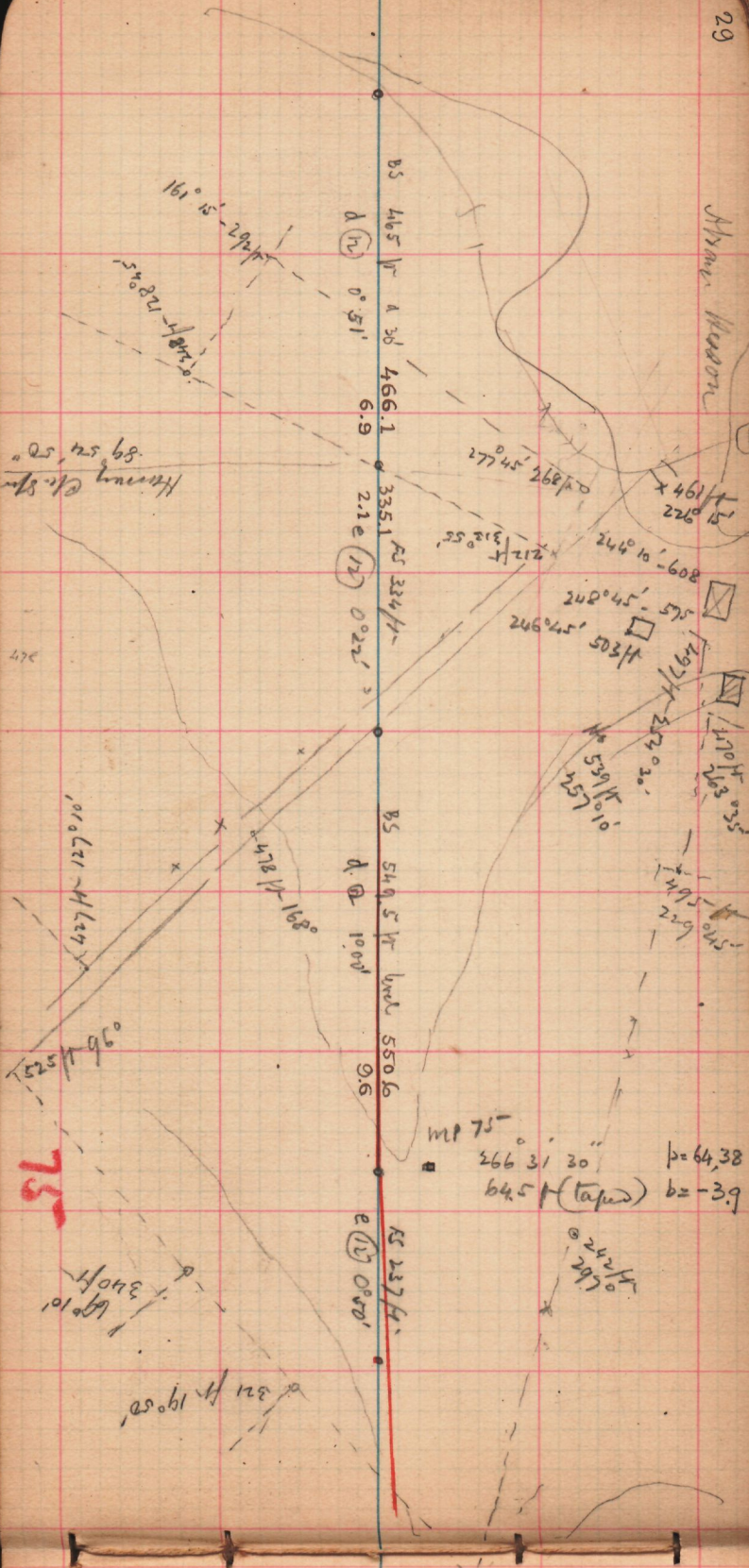
28

July 13 Put in stake by G. Jones crossing road on line  
2-1 ft S. of center of road on left, about 100' from corner road

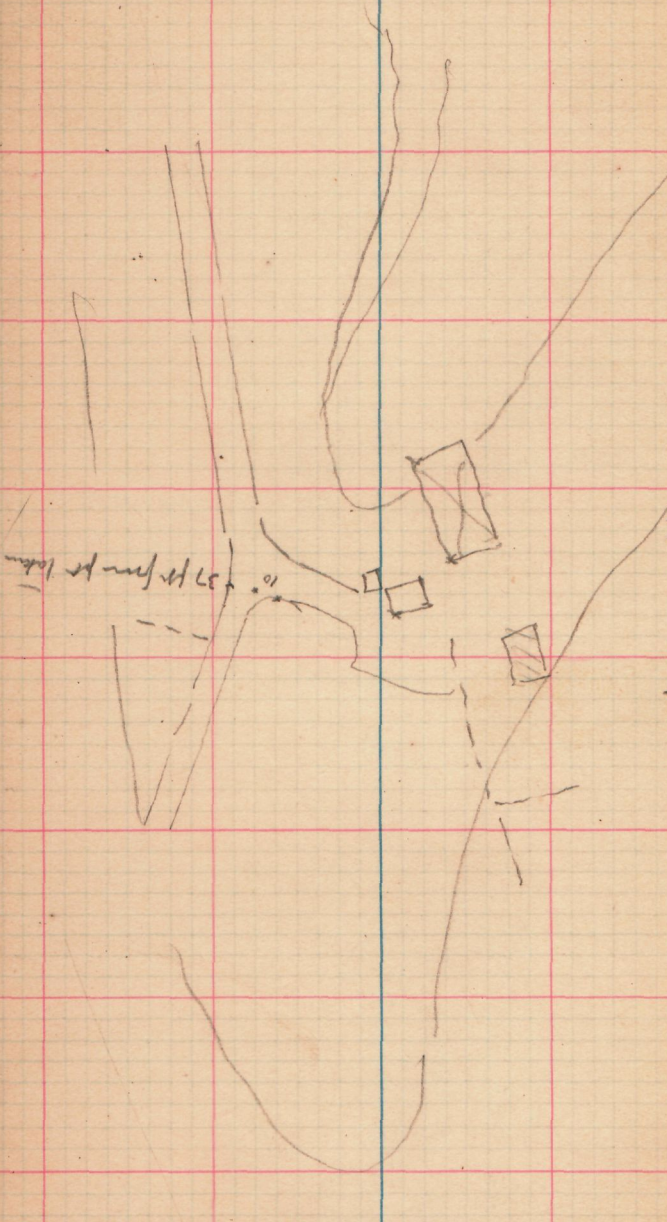
54.019  
4 52.6  
620 p  
6055  
Hansen Oct 15/20  
4700 09 20"



Alman Moon



Site sketch showing convergence of milldams to  
shown on opposite page.





sub sketch showing part of  
Moose Creek at time of  
A.M. survey (W. of 1917)



11  
10  
9  
8  
7  
6  
5  
4  
3  
2  
1  
Hobbs  
1865  
Wm. S. C.

Dec. 13<sup>th</sup> 1901

working instrument from  
deflected 15" to north (left)

MP 75

e. 1° 20'  
627  
37

Back Axis

Angular point

266°46' 64.55'  
64.40 N. - 3.64 W.

MP 75

FS 627H - e 1°20' [628.1]  
e 0°27' + 6.8

1737 206°  
1627-221°

Hessorn

BS 363H [364.1]  
e 12°45' - 11.3

170°20' 286°

538H  
265°30'

767 248°35'

175H-279°50'

1477H-287°20'

300°40'

395H-335°

332°40'

Horizontal Chk  
132°05' 131

410  
410

364-5.68

360H-110°10'

4250H

257-518.11

323

220H

220H

For continuation eastward, see Vol. 6, p. 8

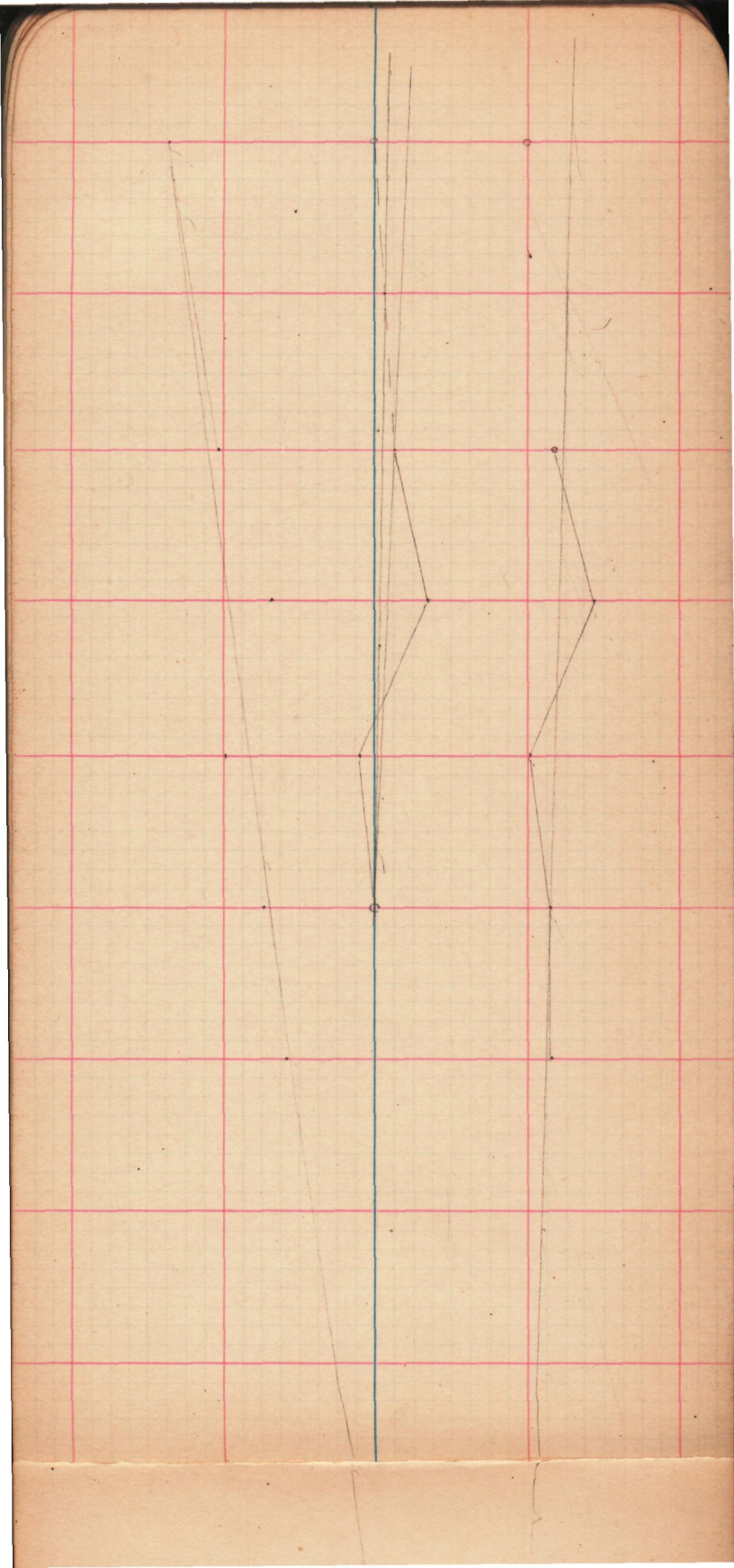
Boundary line

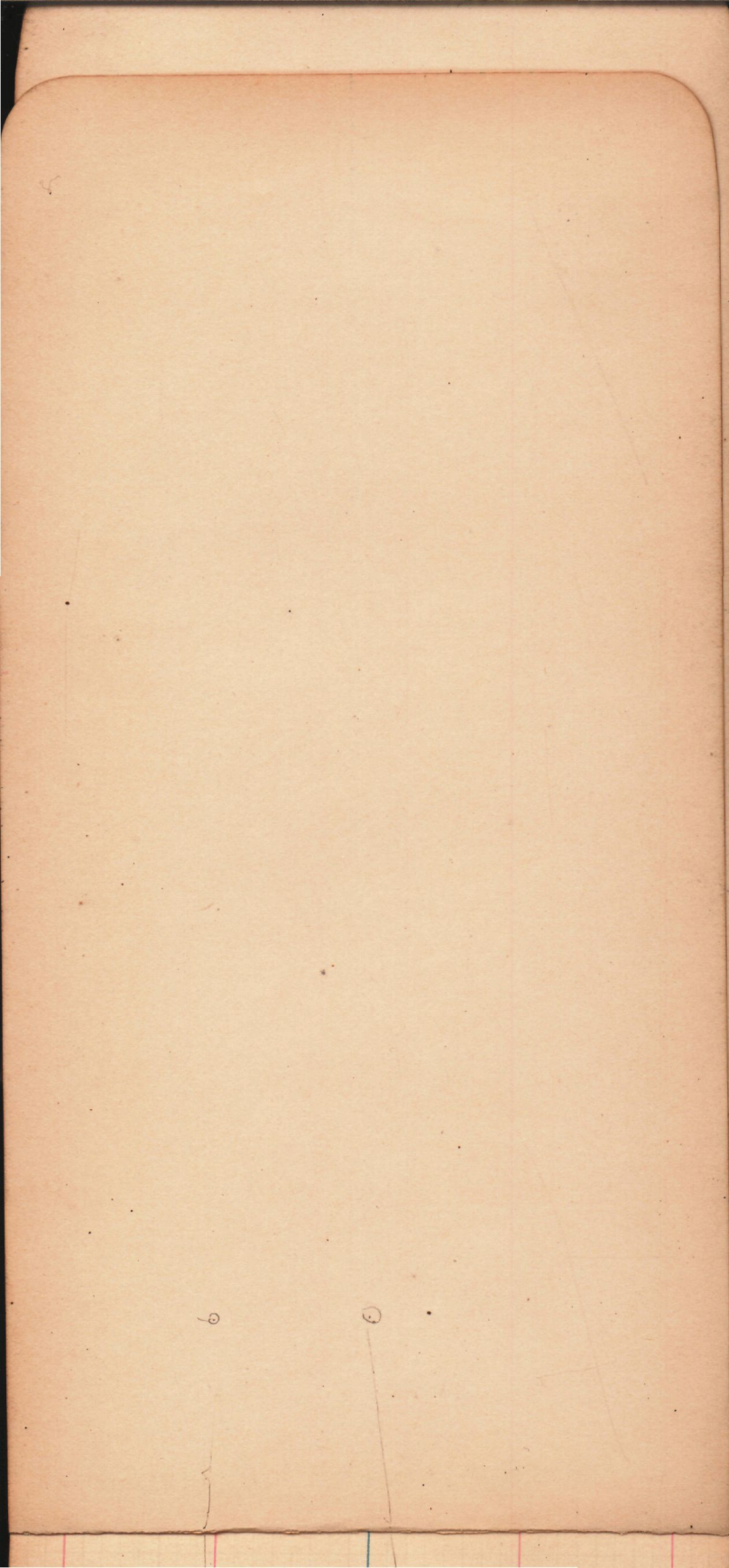
FS 9024

d 12 0' 11" - 33

[953.4]

1311





180	00	00	00	00	
283	17	10	45	30	30
				103	17 30

6	60	00	30	15	
103	17	45	65	55	
				103	17 40
				103	17 35

60  
38 65      9883

82  
 773 H  
 at loss  
 of my car  
 1935