

Treasury Department,  
U. S. COAST AND GEODETIC SURVEY,  
*O. H. Tittmann* , Superintendent.

States: *Pa. - Md.*

## SKETCHBOOK.

### ABSTRACT OF CONTENTS:

*Mason and Dixon Line*

1) From a pt. E. of MP 88 to 90. pp. 1-7

(See Vol. 9 for continuation West'd)

2) From a pt. E. of MP 75, East'd to a pt.

a little west of MP. 63 pp. 8-46

3) Observations for azimuths, &c., pp. 63-56

---

1901-2

---

CHIEF OF PARTY:

*W. C. Hodgkins*

19 Vols.

Vol. 6

Jan 23

2 Polaris  $1^h 23^m 43^s$

=  $88^{\circ} 47' 27''$

add diff to m. J. dist  $1^m 9.8565$

Sub from Sid 2nd  $1^m 9.830$

Sid. J. Mean Noon at Co.  $20^h 07^m 32.78$

= diff for  $1^h = +9.8565$

N.

31.545

287.43  
~~180~~  
107.43

107.51  
~~180~~  
-72.49

55825

Treasury Department,  
U. S. COAST AND GEODETIC SURVEY,

*O H Tittmann*, Superintendent.

States: *Pa. - Md.*

# SKETCHBOOK.

## ABSTRACT OF CONTENTS:

*Mason and Dixon Line*

1) from a pt. E. of M.P. 88

to M.P. 90

(See vol. 9, for continuation westward)

pp. 1-7

2) from a pt. E. of M.P. 75

eastwardly to a point near

and a little west of M.P. 63

pp. 8-46

3) Observations for Azimuth, etc.

pp. 63-56

1901 - 2

CHIEF OF PARTY:

*W. C. Hodgkins*

Vols.

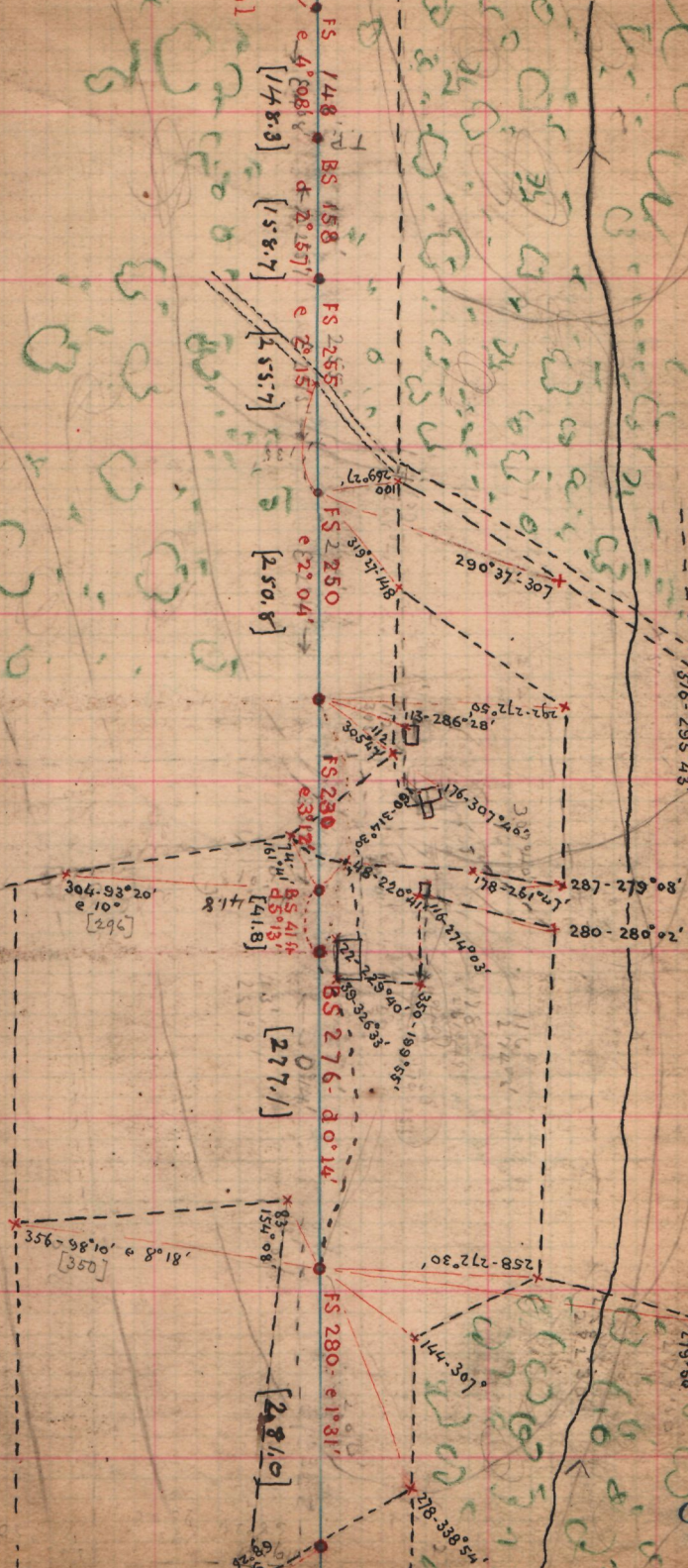
Vol. 6

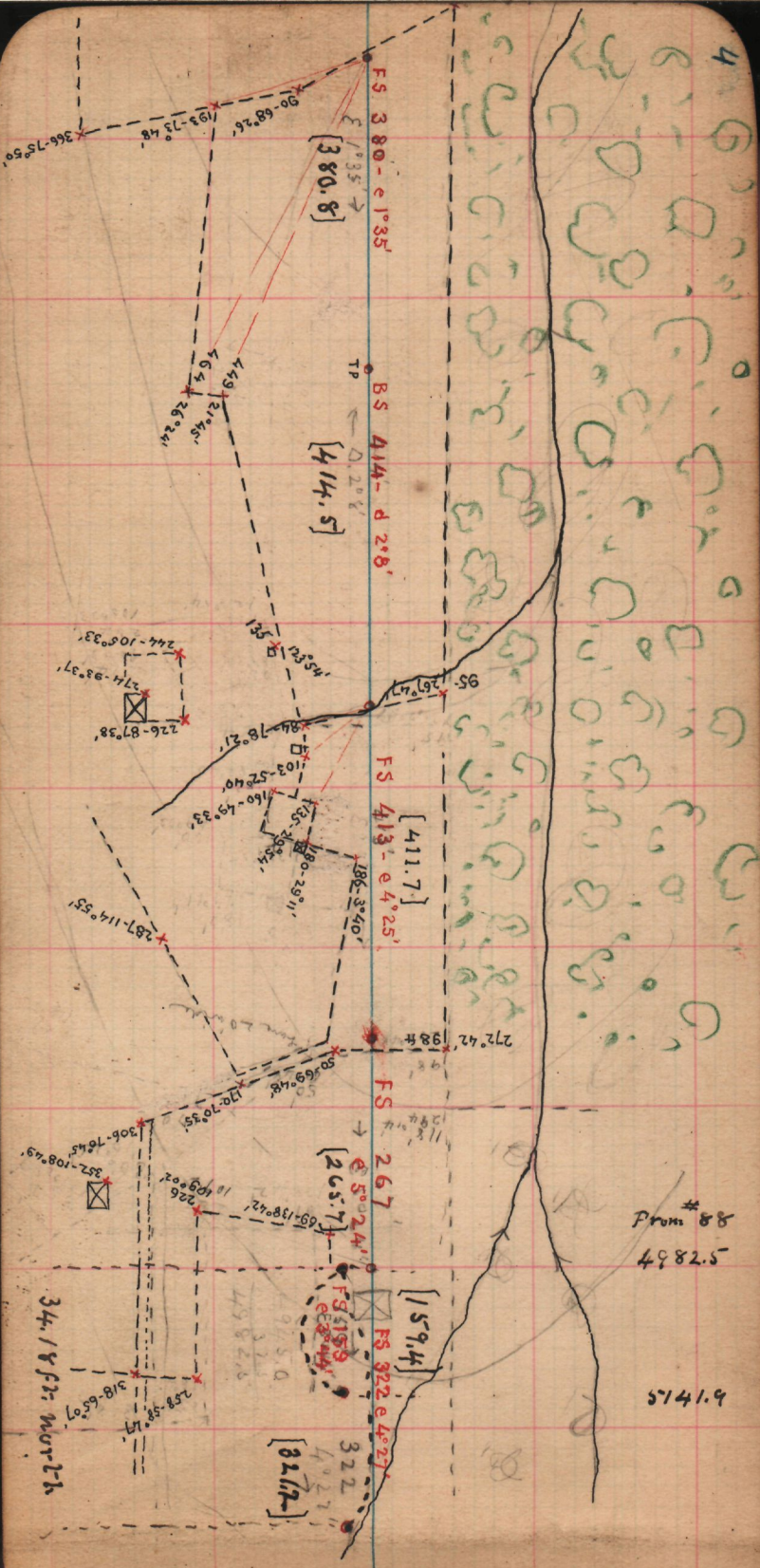




em-tical

230.4





[380.8]

[414.5]

[411.7]

[265.7]

[159.4]

[82.7]

FS 380 - e 1°35'

BS 414 - d 2°8'

FS 413 - e 4°25'

FS 267

FS 322 e 4°27'

322

TP

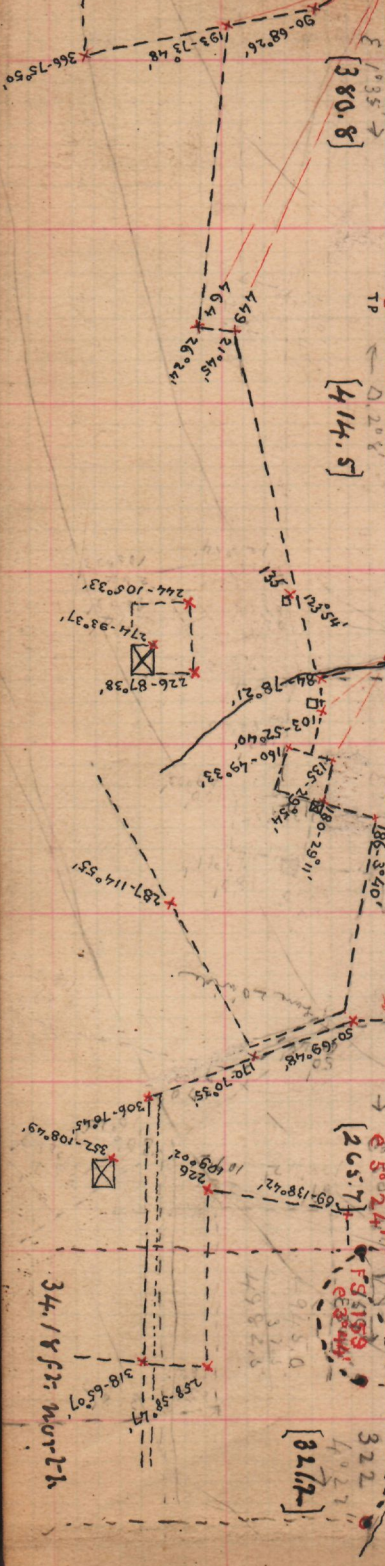
D. 2.0

Prm # 8  
4982.5

5741.9

34.18 ft North

4

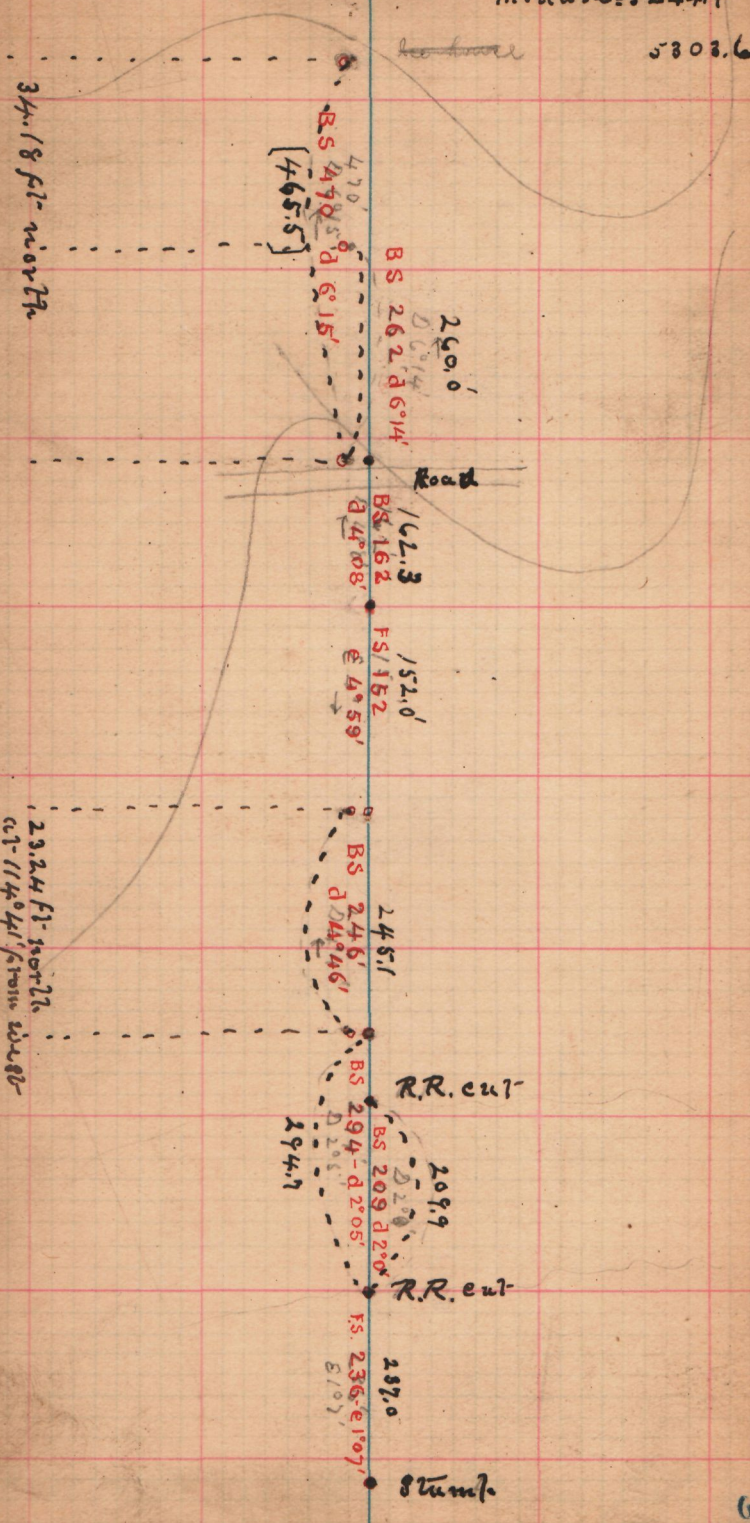


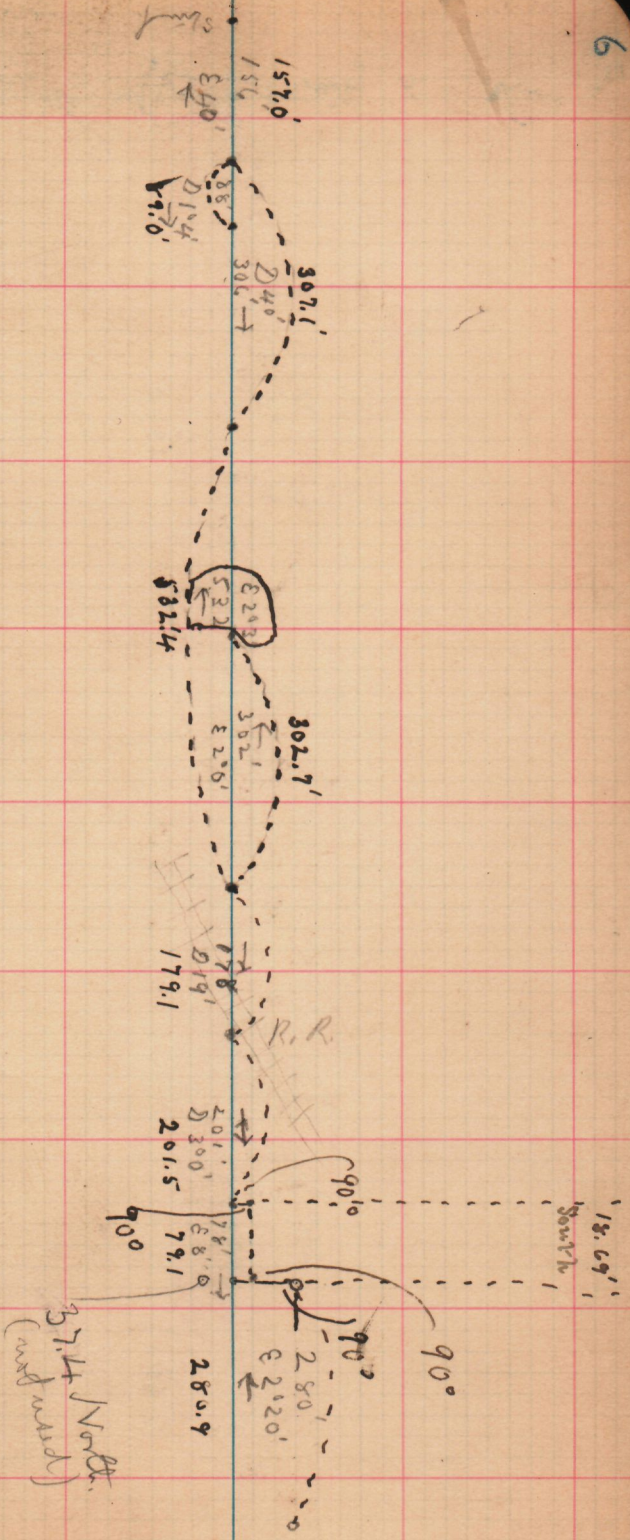
middle = 5244.9

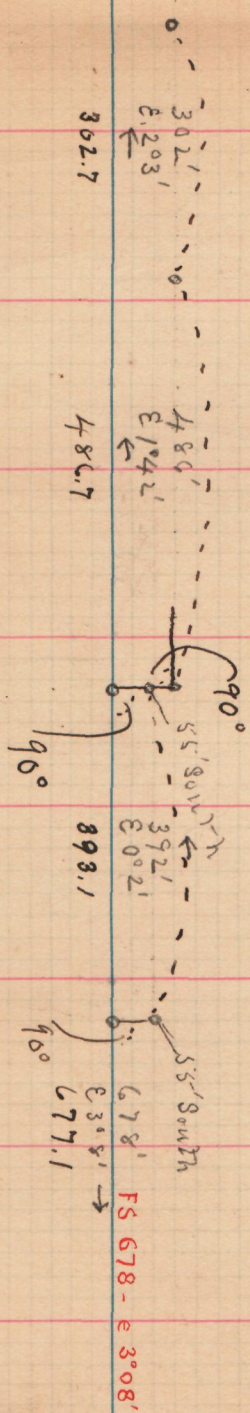
5303.6

34.18 ft - north

23.24 ft - north  
cut - 114° 41' from the center







302.7

486.7

893.1

677.1

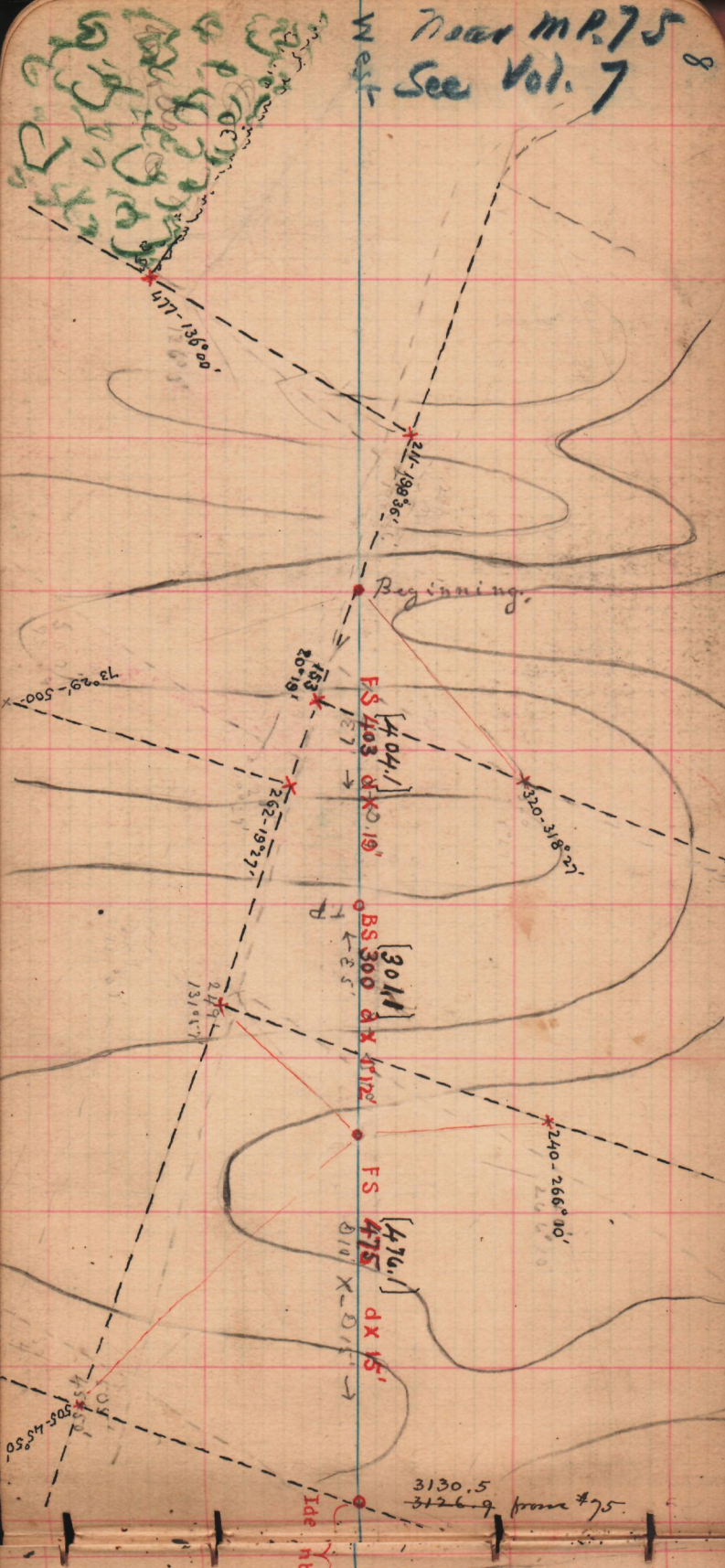
This work stopped here for season

10456.9

Near M.P. 75  
See Vol. 7

West

8



3126-9 from #75

Identical

FS

347

DX 2°06'

BS

596

EX 2°51'

BS

160

DX 4°14'

FS

326

FS

304

EX 2°48'

48653

from #75

438

260°35'

456-279°51'

279°47'

279°47'

279°47'

279°47'

279°47'

279°47'

279°47'

279°47'

253

290°14'

458

265°28'

257

253°34'

90

258°49'

267

287°31'

30 ft wide

TR

2°51'

2°06'

4°14'

2°48'

2°53'

110°29'

93°22'

145°55'

175°33'

165°53'

155°15'

100°16'

92°44'

2°06'

2°51'

4°14'

2°48'

2°53'

110°29'

93°22'

145°55'

175°33'

165°53'

155°15'

100°16'

92°44'

2°06'

2°51'

4°14'

2°48'

2°53'

110°29'

93°22'

145°55'

175°33'

165°53'

155°15'

100°16'

92°44'

2°06'

2°51'

4°14'

2°48'

2°53'

110°29'

93°22'

145°55'

175°33'

165°53'

155°15'

100°16'

92°44'

2°06'

2°51'

4°14'

2°48'

2°53'

110°29'

93°22'

145°55'

175°33'

165°53'

155°15'

100°16'

92°44'

2°06'

2°51'

4°14'

2°48'

2°53'

4°14'

2°06'

2°51'

4°14'

2°48'

2°53'

110°29'

93°22'

145°55'

175°33'

165°53'

155°15'

100°16'

92°44'

2°06'

2°51'

4°14'

2°48'

2°53'

110°29'

93°22'

145°55'

175°33'

165°53'

155°15'

100°16'

92°44'

2°06'

2°51'

4°14'

2°48'

2°53'

110°29'

93°22'

145°55'

175°33'

165°53'

155°15'

100°16'

92°44'

2°06'

2°51'

4°14'

2°48'

2°53'

4°14'

2°06'

2°51'

4°14'

2°48'

2°53'

110°29'

93°22'

145°55'

175°33'

165°53'

155°15'

100°16'

92°44'

2°06'

2°51'

4°14'

2°48'

2°53'

110°29'

93°22'

145°55'

175°33'

165°53'

155°15'

100°16'

92°44'

2°06'

2°51'

4°14'

2°48'

2°53'

110°29'

93°22'

145°55'

175°33'

165°53'

155°15'

100°16'

92°44'

2°06'

2°51'

4°14'

2°48'

2°53'

4°14'

2°06'

2°51'

4°14'

2°48'

2°53'

110°29'

93°22'

145°55'

175°33'

165°53'

155°15'

100°16'

92°44'

2°06'

2°51'

4°14'

2°48'

2°53'

110°29'

93°22'

145°55'

175°33'

165°53'

155°15'

100°16'

92°44'

2°06'

2°51'

4°14'

2°48'

2°53'

110°29'

93°22'

145°55'

175°33'

165°53'

155°15'

100°16'

92°44'

2°06'

2°51'

4°14'

2°48'

2°53'

4°14'

2°06'

2°51'

4°14'

2°48'

2°53'

110°29'

93°22'

145°55'

175°33'

165°53'

155°15'

100°16'

92°44'

2°06'

2°51'

4°14'

2°48'

2°53'

110°29'

93°22'

145°55'

175°33'

165°53'

155°15'

100°16'

92°44'

2°06'

2°51'

4°14'

2°48'

2°53'

110°29'

93°22'

145°55'

175°33'

165°53'

155°15'

100°16'

92°44'

2°06'

2°51'

4°14'

2°48'

2°53'

4°14'

2°06'

2°51'

4°14'

2°48'

2°53'

110°29'

93°22'

145°55'

175°33'

165°53'

155°15'

100°16'

92°44'

2°06'

2°51'

4°14'

2°48'

2°53'

110°29'

93°22'

145°55'

175°33'

165°53'

155°15'

100°16'

92°44'





FS 233 BX 218'

[234.1]

FS 240 EX 223' BS 433 X-DX 11'

[240.7]

FS 198 X 198'

[434.1]

FS 196 BX 196'

[199.1]

FS 196 BX 196'

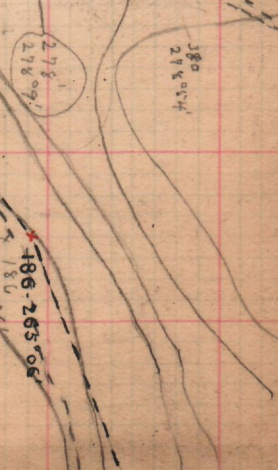
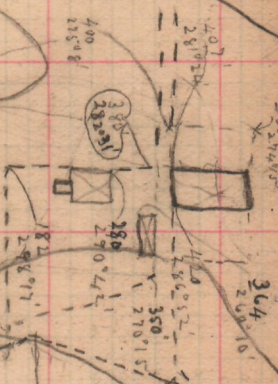
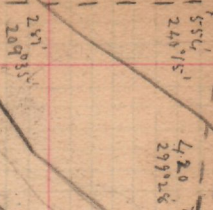
[195.9]

BS 291 X-DX 254'

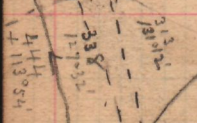
[291.6]

FS 193 EX 230'

[193.8]



Alloways creek



49.59  
43.25  
92.84  
87057 from used

Grade = 92.78 ft.  
Sta. ead = 3.32

MP 73.3

[242.1]

FS 246 EX 0°06'

[223.1]

FS 222 EX 41'

[244.1]

263 X - 212'

[498.0]

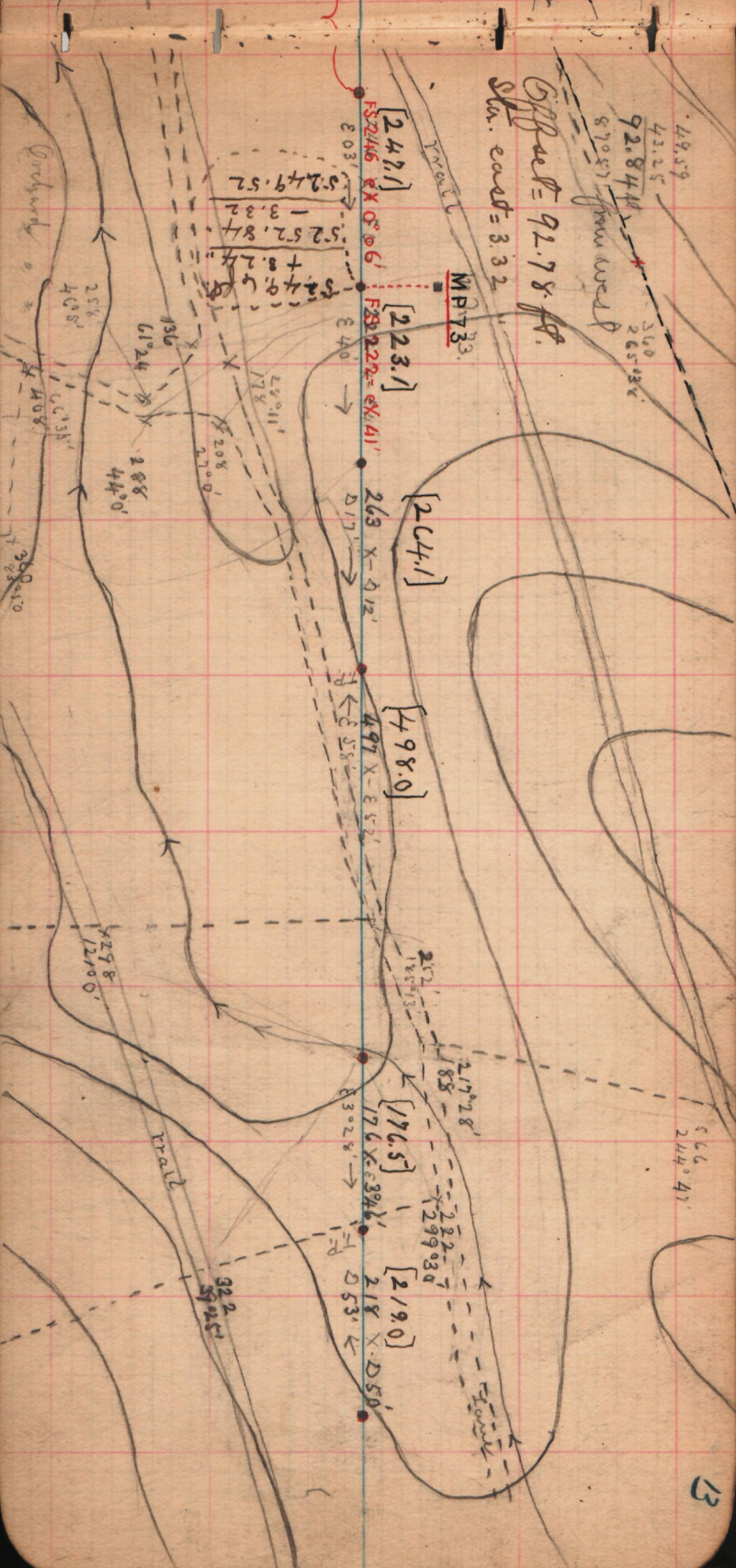
497 X - 552'

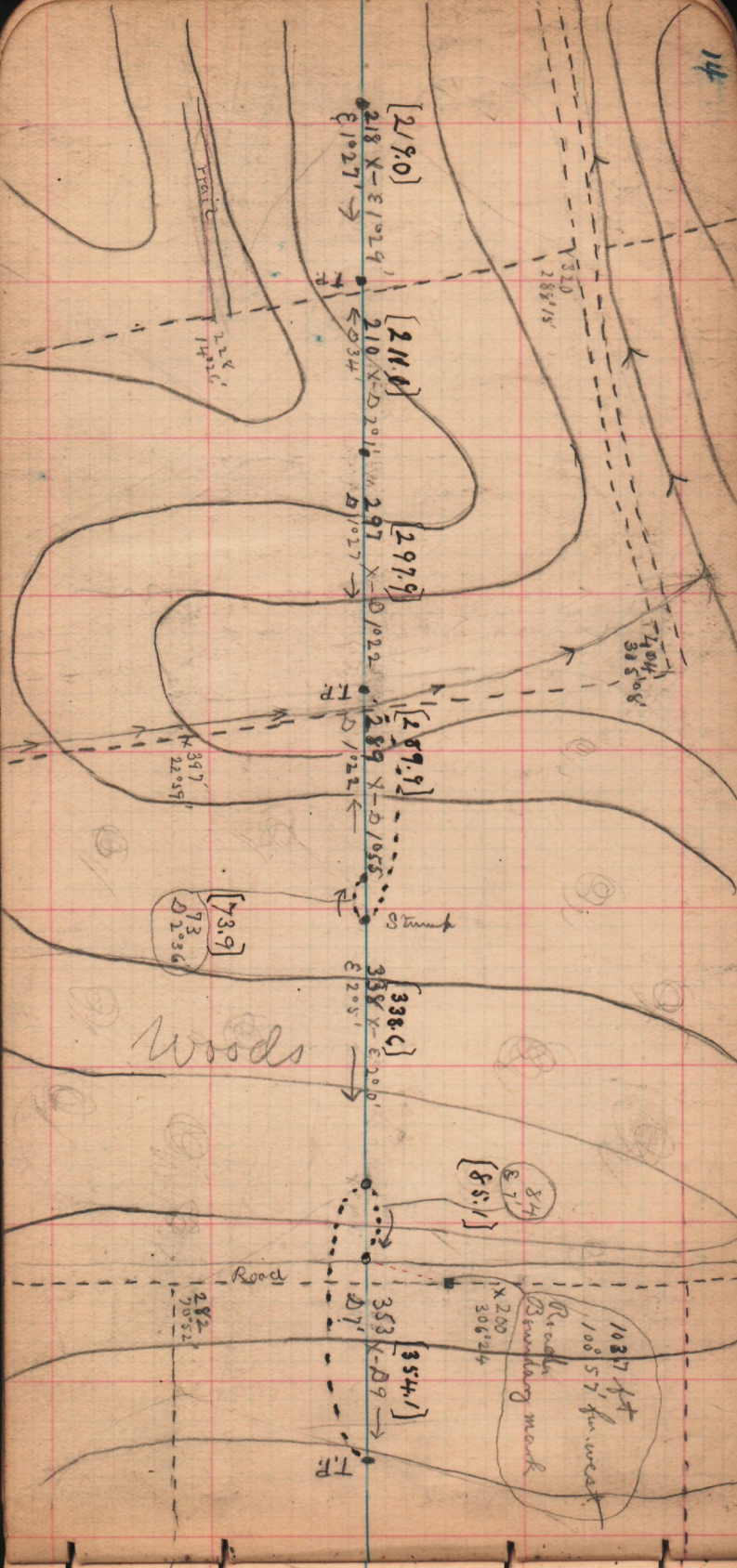
[176.5]

176 X - 392'

[219.0]

218 X - 50'







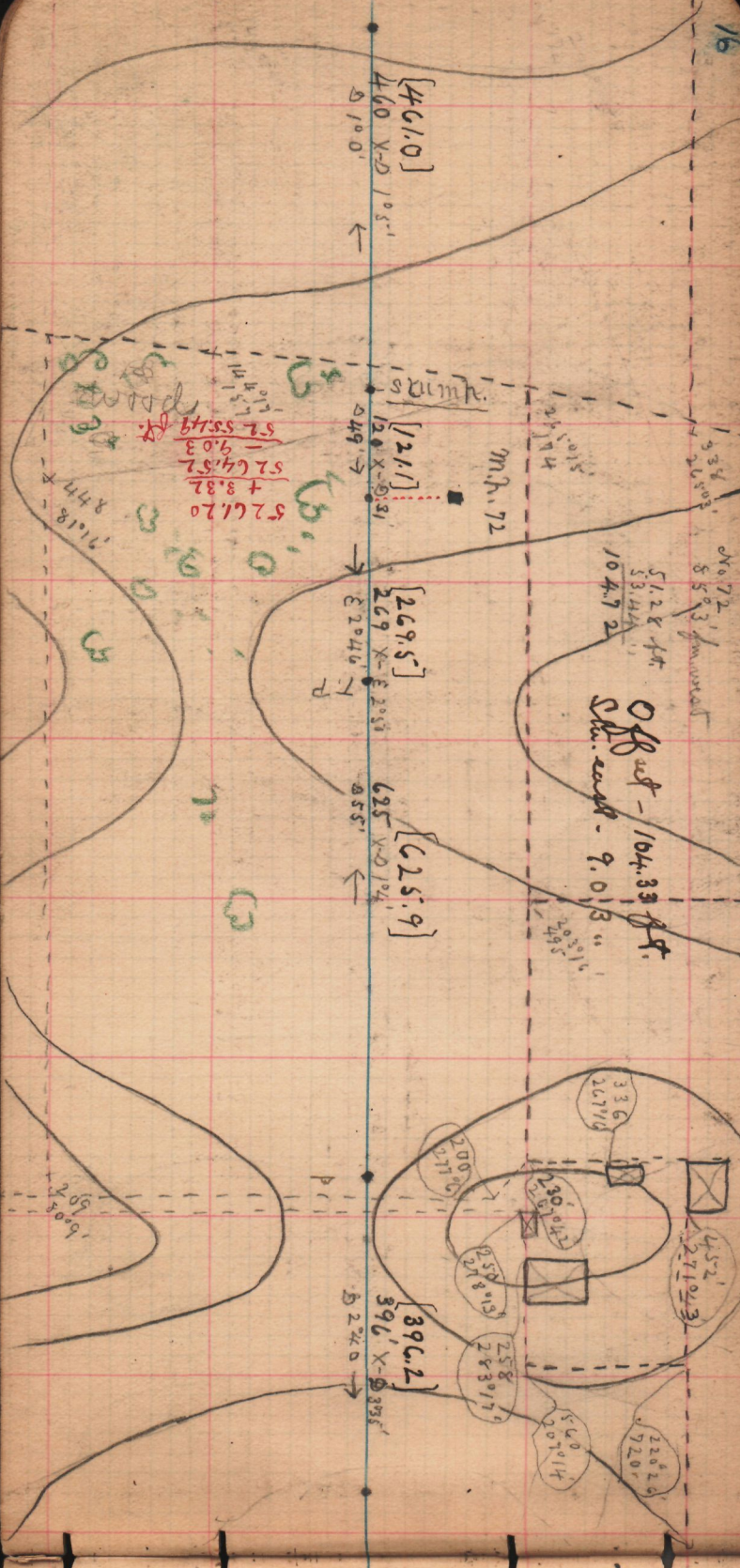
[461.0]  
460 X-D 105'  
←

[12.1]  
120 X-D 91'  
←

[269.5]  
269 X-D 205'  
←

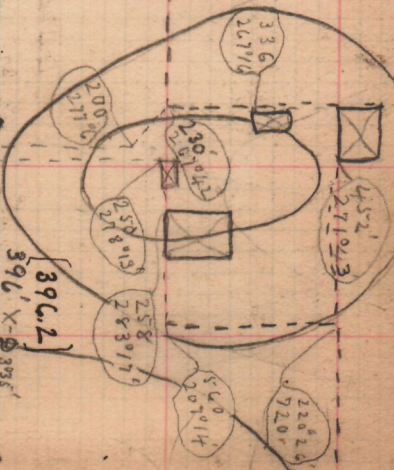
[625.9]  
625 X-D 104'  
←

[396.2]  
396 X-D 335'  
←



5261.20  
+ 8.82  
5264.52  
- 9.03  
5255.49

No 72  
850.3  
51.2 x 44  
53.44  
104.72  
Offset - 104.33 ft.  
Stk. read - 9.013



11.18  
8.77

1608  
209







Measurement  
298.9

[296.9]  
296 X-B/1838  
E 1° 35'  
298

[402.4]  
402 X-D/2036  
O 2° 27'

[226.9]  
226 X-D/1028  
O 2° 49'

[247.1]  
247 X-B/1977  
E 3° 01'

[292.9]  
292 X-B/1917  
E 1° 02'

[165.1]  
164 X-B/102  
E 3° 10'

400  
944  
398.2

225.9

242.1

292.9

162.1

E 1° 35'  
298

398  
204

D 1° 30'  
225

E 1° 24'

D 1° 02'

E 3° 10'

206  
324  
2022

443  
386  
127

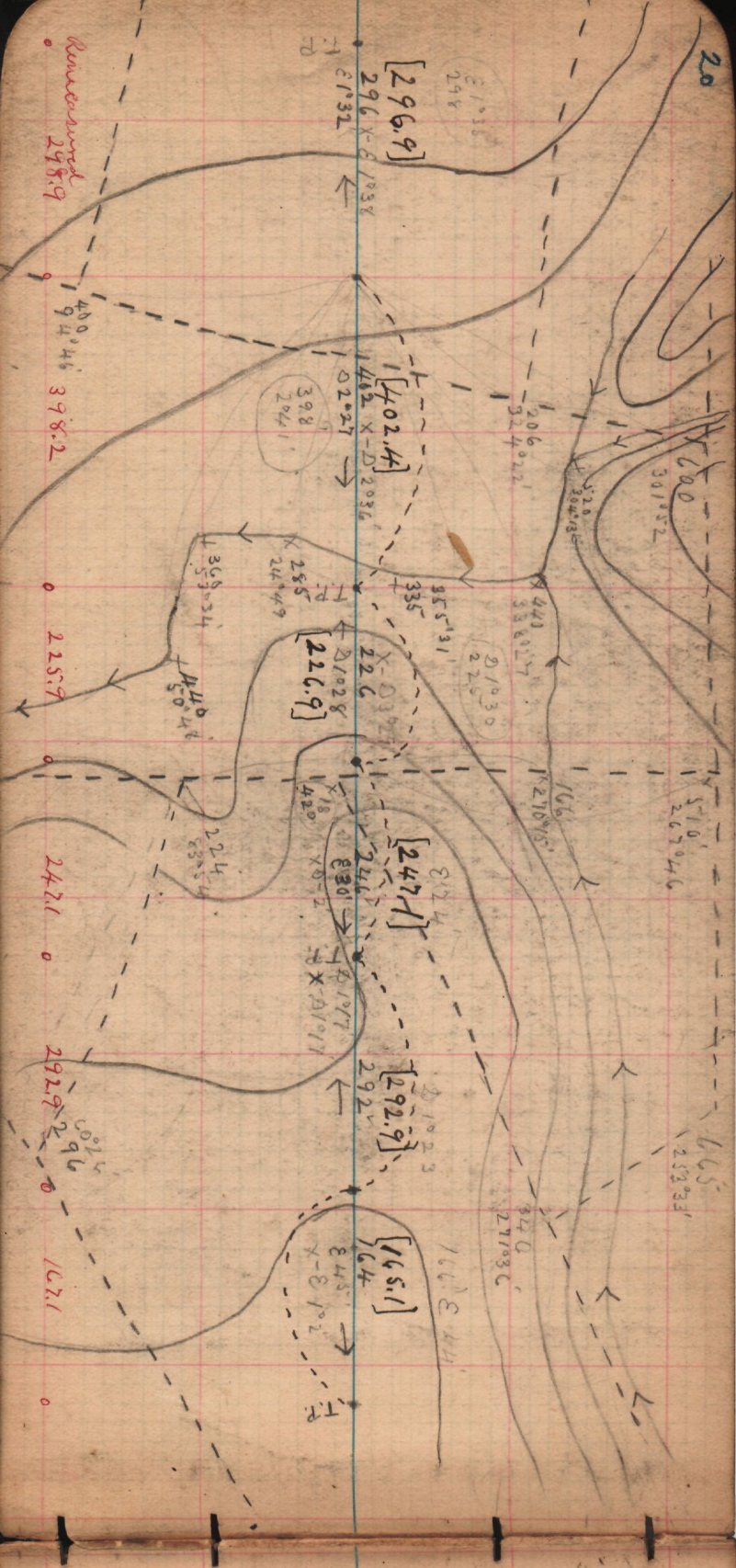
270  
95

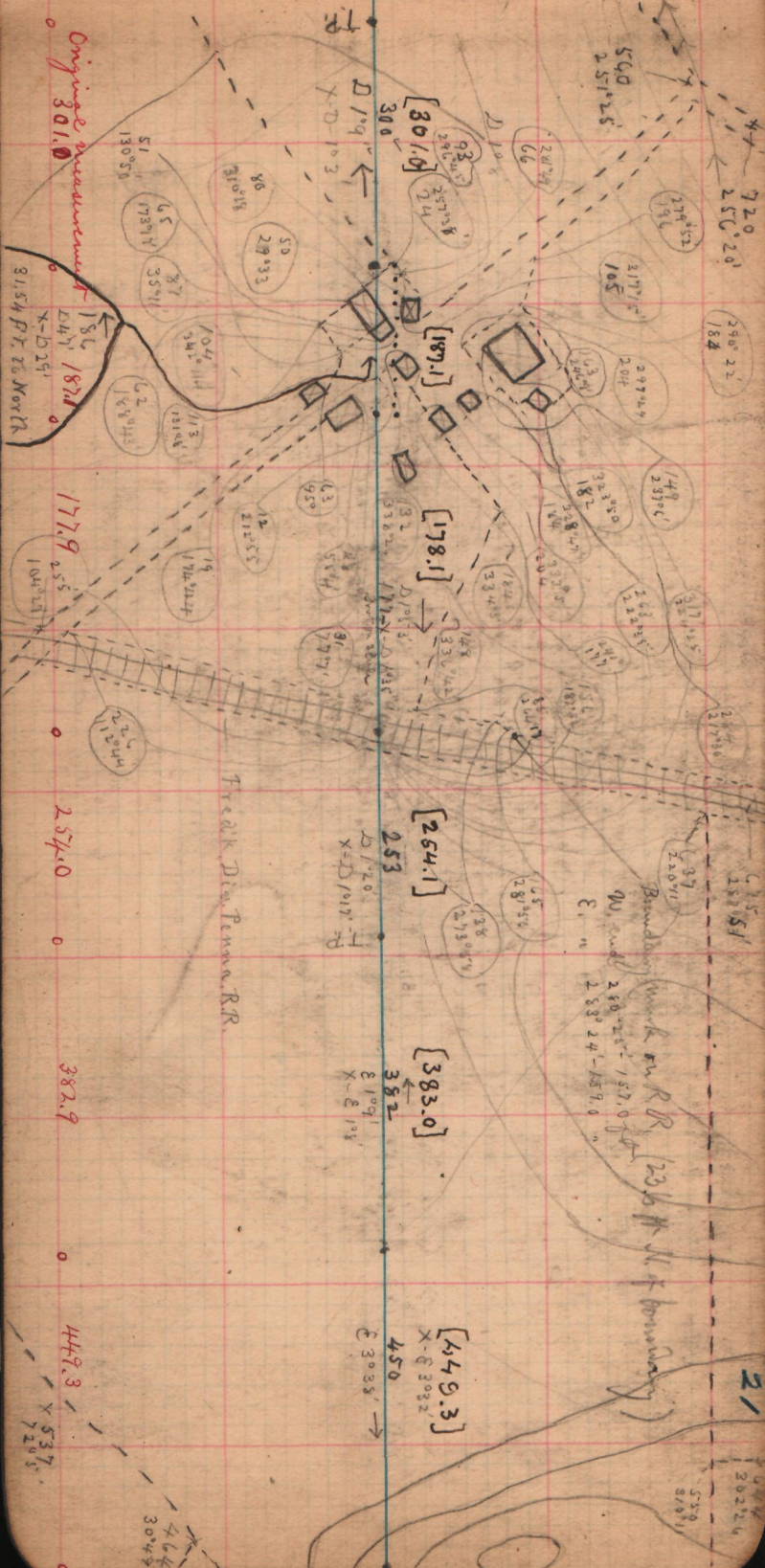
340  
270  
30

301  
1952

510  
267  
046

665  
253  
933





Original measurement  
301.0

186  
187.1  
247  
81.54 P.T. 26 North

177.9  
255  
104.5

254.0

382.9

449.3

X-537  
720.5

S1  
130°50

U5  
178°11

87  
35°11

104  
341°11

62  
168°43

113  
131°06

19  
172°22

21  
121°14

22  
104°27

25  
104°27

26  
104°27

27  
104°27

28  
104°27

29  
104°27

30  
104°27

31  
104°27

32  
104°27

33  
104°27

34  
104°27

35  
104°27

80  
310°18

50  
29°33

86  
310°18

104  
341°11

113  
131°06

19  
172°22

21  
121°14

22  
104°27

25  
104°27

26  
104°27

27  
104°27

28  
104°27

29  
104°27

30  
104°27

31  
104°27

32  
104°27

33  
104°27

34  
104°27

35  
104°27

36  
104°27

93  
286°

24  
257°18

24  
257°18

105  
219°11

204  
207°44

148  
237°06

148  
237°06

148  
237°06

148  
237°06

148  
237°06

148  
237°06

148  
237°06

148  
237°06

148  
237°06

148  
237°06

148  
237°06

148  
237°06

148  
237°06

148  
237°06

148  
237°06

300  
[301.0]

300  
[301.0]

300  
[301.0]

300  
[301.0]

300  
[301.0]

300  
[301.0]

300  
[301.0]

300  
[301.0]

300  
[301.0]

300  
[301.0]

300  
[301.0]

300  
[301.0]

300  
[301.0]

300  
[301.0]

300  
[301.0]

300  
[301.0]

300  
[301.0]

300  
[301.0]

300  
[301.0]

300  
[301.0]

300  
[301.0]

300  
[301.0]

300  
[301.0]

300  
[301.0]

300  
[301.0]

300  
[301.0]

300  
[301.0]

300  
[301.0]

300  
[301.0]

300  
[301.0]

300  
[301.0]

300  
[301.0]

300  
[301.0]

300  
[301.0]

300  
[301.0]

300  
[301.0]

300  
[301.0]

300  
[301.0]

300  
[301.0]

300  
[301.0]

300  
[301.0]

300  
[301.0]

300  
[301.0]

300  
[301.0]

300  
[301.0]

300  
[301.0]

300  
[301.0]

300  
[301.0]

300  
[301.0]

300  
[301.0]

300  
[301.0]

300  
[301.0]

300  
[301.0]

300  
[301.0]

300  
[301.0]

300  
[301.0]

300  
[301.0]

300  
[301.0]

300  
[301.0]

300  
[301.0]

300  
[301.0]

300  
[301.0]

300  
[301.0]

300  
[301.0]

300  
[301.0]

300  
[301.0]

300  
[301.0]

300  
[301.0]

300  
[301.0]

300  
[301.0]

300  
[301.0]

300  
[301.0]

300  
[301.0]

300  
[301.0]

300  
[301.0]

300  
[301.0]

300  
[301.0]

300  
[301.0]

300  
[301.0]

300  
[301.0]

300  
[301.0]

300  
[301.0]

300  
[301.0]

300  
[301.0]

300  
[301.0]

300  
[301.0]

300  
[301.0]

300  
[301.0]

300  
[301.0]

300  
[301.0]

300  
[301.0]

300  
[301.0]

300  
[301.0]

300  
[301.0]

300  
[301.0]

300  
[301.0]

300  
[301.0]

300  
[301.0]

300  
[301.0]

300  
[301.0]

300  
[301.0]

300  
[301.0]

300  
[301.0]

300  
[301.0]

300  
[301.0]

300  
[301.0]

300  
[301.0]

300  
[301.0]

300  
[301.0]

300  
[301.0]

300  
[301.0]

300  
[301.0]

300  
[301.0]

300  
[301.0]

300  
[301.0]

300  
[301.0]

300  
[301.0]

300  
[301.0]

300  
[301.0]

300  
[301.0]

300  
[301.0]

300  
[301.0]

300  
[301.0]

300  
[301.0]

300  
[301.0]

300  
[301.0]

300  
[301.0]

300  
[301.0]

300  
[301.0]

300  
[301.0]

300  
[301.0]

300  
[301.0]

300  
[301.0]

300  
[301.0]

300  
[301.0]

300  
[301.0]

300  
[301.0]

300  
[301.0]

300  
[301.0]

300  
[301.0]

300  
[301.0]

300  
[301.0]

300  
[301.0]

300  
[301.0]

300  
[301.0]

300  
[301.0]

300  
[301.0]

300  
[301.0]

300  
[301.0]

300  
[301.0]

300  
[301.0]

300  
[301.0]

300  
[301.0]

300  
[301.0]

300  
[301.0]

300  
[301.0]

300  
[301.0]

300  
[301.0]

300  
[301.0]

300  
[301.0]

300  
[301.0]

300  
[301.0]

300  
[301.0]

300  
[301.0]

300  
[301.0]

300  
[301.0]

300  
[301.0]

300  
[301.0]

300  
[301.0]

300  
[301.0]

300  
[301.0]

300  
[301.0]

300  
[301.0]

300  
[301.0]

300  
[301.0]

300  
[301.0]

300  
[301.0]

300  
[301.0]

300  
[301.0]

300  
[301.0]

300  
[301.0]

300  
[301.0]

300  
[301.0]

300  
[301.0]

300  
[301.0]

300  
[301.0]

300  
[301.0]

300  
[301.0]

300













B

515  
264°55'

566  
309°58'

334  
390

53  
3380'

X-E 55  
228  
E 33' →

X-D 1°20'  
443  
D 1°15' →

X-E 29  
340  
E 31' ←

X-D 2°35'  
470  
D 2°30' →

X-D 6°3'  
198  
D 3°15' ←

257  
118°23'

232  
205°38'

245  
224°40'

430  
404

454  
5507'

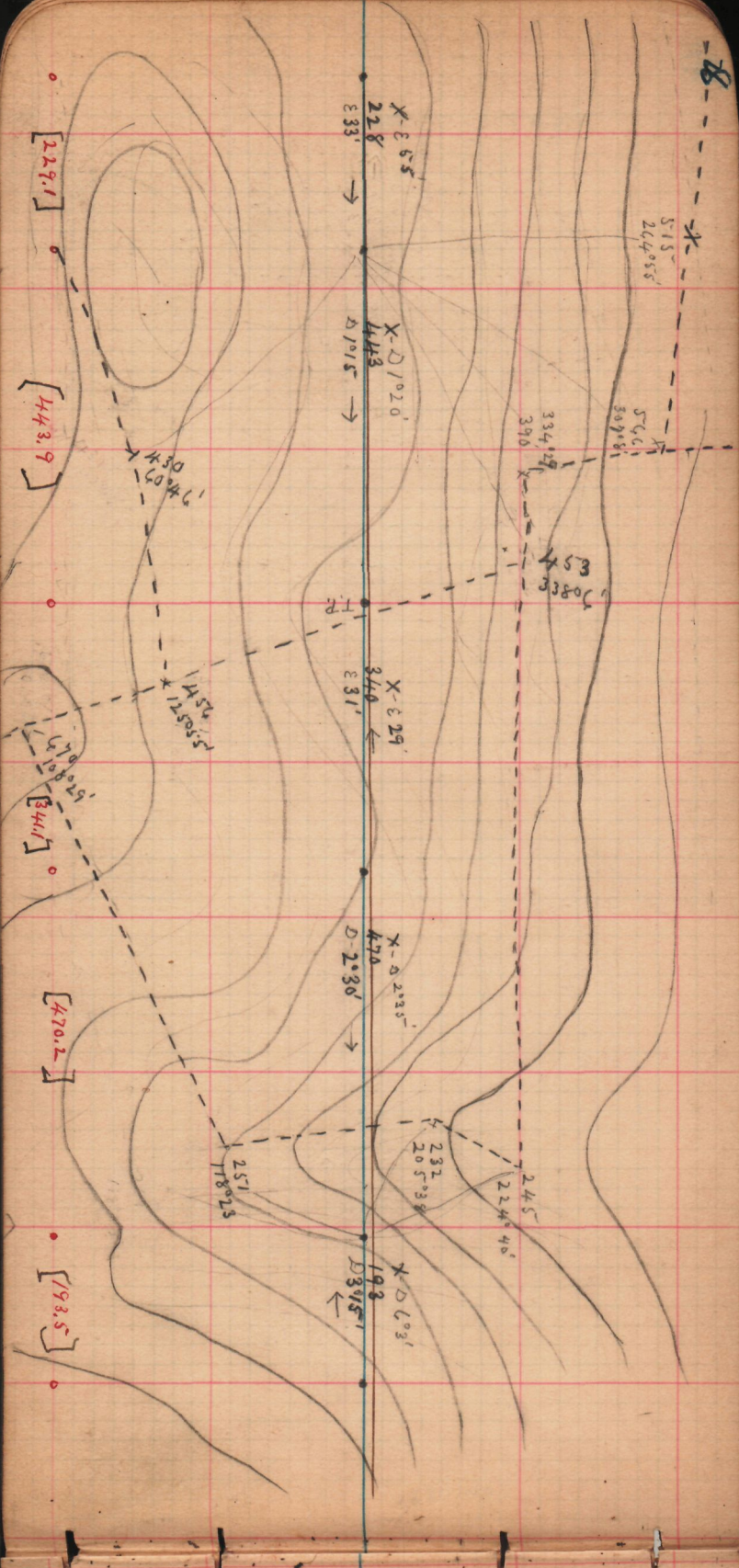
[229.1]

[443.9]

[341.1]

[470.2]

[193.5]





191.0  
226.0  
167.4  
179.6  
168.6  
204.9  
411.4

TP  
X-E 192.0  
190  
E 1012.1 ←  
225  
X-E 589  
E 588 →  
TP  
X-D 504  
168  
E 805.8  
183  
X-E 9048  
E 805.7 →  
169  
X-E 6024  
E 502.7  
204  
X 2042  
E 1058  
TP  
411  
X-E 2016  
E 2023  
←

252  
9033

138  
4014  
340  
K 8040  
158018  
H 1

mill race

600  
33

314  
12248

12570

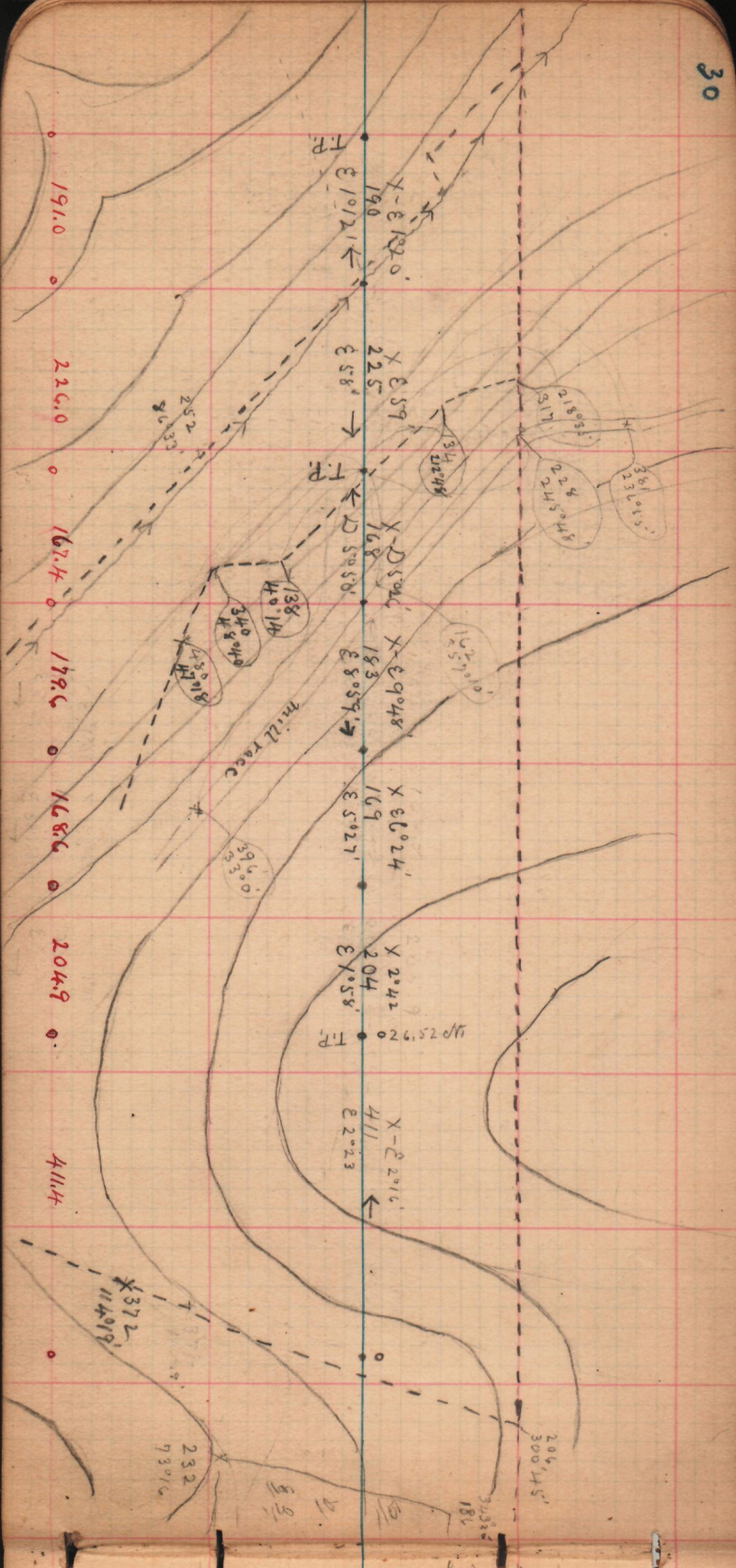
21893  
38915  
237  
228  
34055  
224

X 1372  
11499

232  
9306

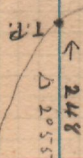
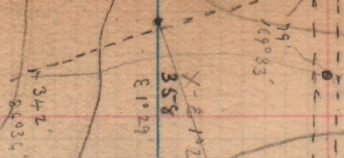
206  
30045

32022  
181



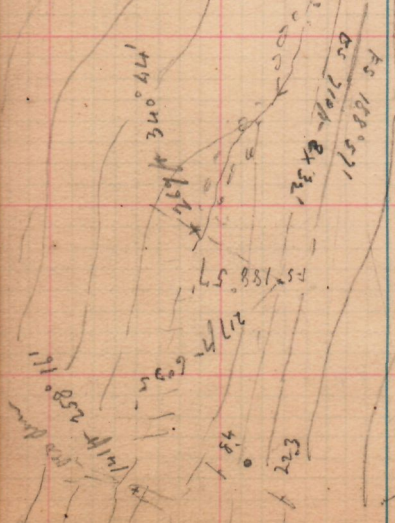
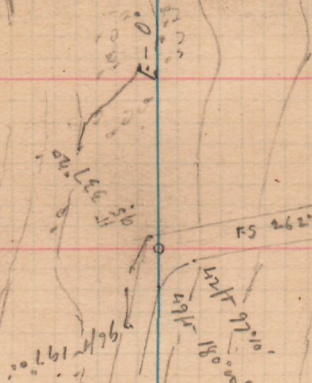


358.9  
248.5



181.98 N.  
75.59 W.  
M.P. N° 67  
12 to fence  
15 to fence

East



of line from first hand W. of m.p. 67  
crossed Baltimore Pike



Transit line brought from west side of woods.

608 ft

190° 32'

234 ft dx 2°04' - 193° 04'

x 164 ft 209° 50'

729  
223.4

148.85 (top)

2<sup>nd</sup> Offset 89° 38' 35" from W. Line

89° 59' 25" from near E. Line

near box of #7, 70 ft E. of  
side on L to transit line E.

1<sup>st</sup> Offset 121° 25' 55" from W. Line  
(East line parallel to 151 ft - 336.55')

110.57 ft

176.48 ft

PS 353 TR  
dx 1° 41'  
[363.8]

BS 461  
ex 2° 13'  
[461.4]

PS 134.0  
ex 2° 42'  
[134.8]

PS 118.5  
ex 0° 40'  
[118.5]

FS Az = 2° 47' 30" - 443 ft  
ex 0° 40'

91 ft - 245° 08'

66 ft - 25° 05'

72 ft - 119° 57'

84 ft - 57°

80 ft - 282° 55'

72 ft - 101° 02'

72 ft - 318° 15'

51 ft - 15°

N. of Body

22° 47'

323 ft - 250°

327 ft - 272° 40'

318 ft - 15°

327 ft - 272° 40'

318 ft - 15°

327 ft - 272° 40'

170 ft - 75° 15'

170 ft - 75° 15'

170 ft - 75° 15'

170 ft - 75° 15'

170 ft - 75° 15'

170 ft - 75° 15'

170 ft - 75° 15'

170 ft - 75° 15'

170 ft - 75° 15'

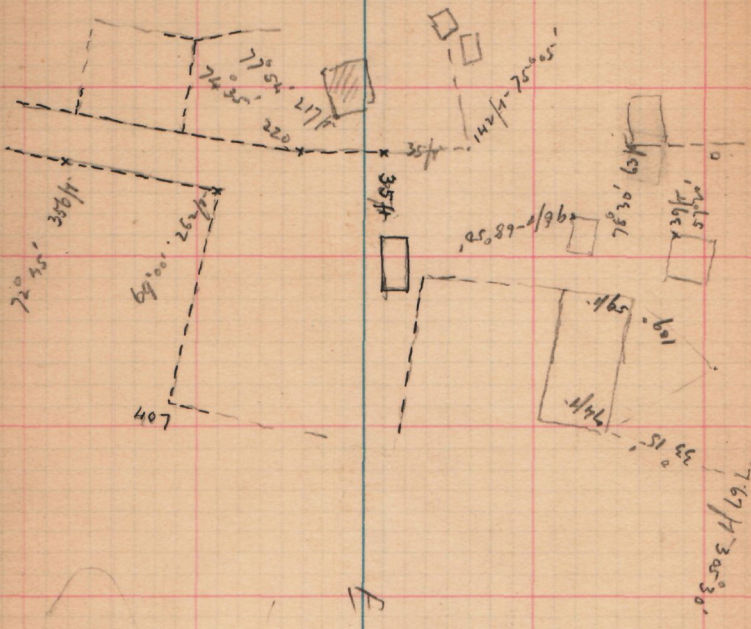
[117.5]

[443.5]

PS 317

FS 2° 47' 30"  
ex 0° 40'

Site



Site sketch showing building layout

249 11  
690 11  
341 11  
1260 33  
1261.1

377 hr 169' 50"

146° 03' 41.7"

BS 229 11  
ex 2° 40'  
[229.6]

FS

1260 hr  
[691.1] Ah: -1.6

FS 690 hr 2 x 6'

B 3474 D X 1° 44'  
1 x [344.8]

FS 203  
[263.4]

694 hr 15' 27"

336° 50' 1"

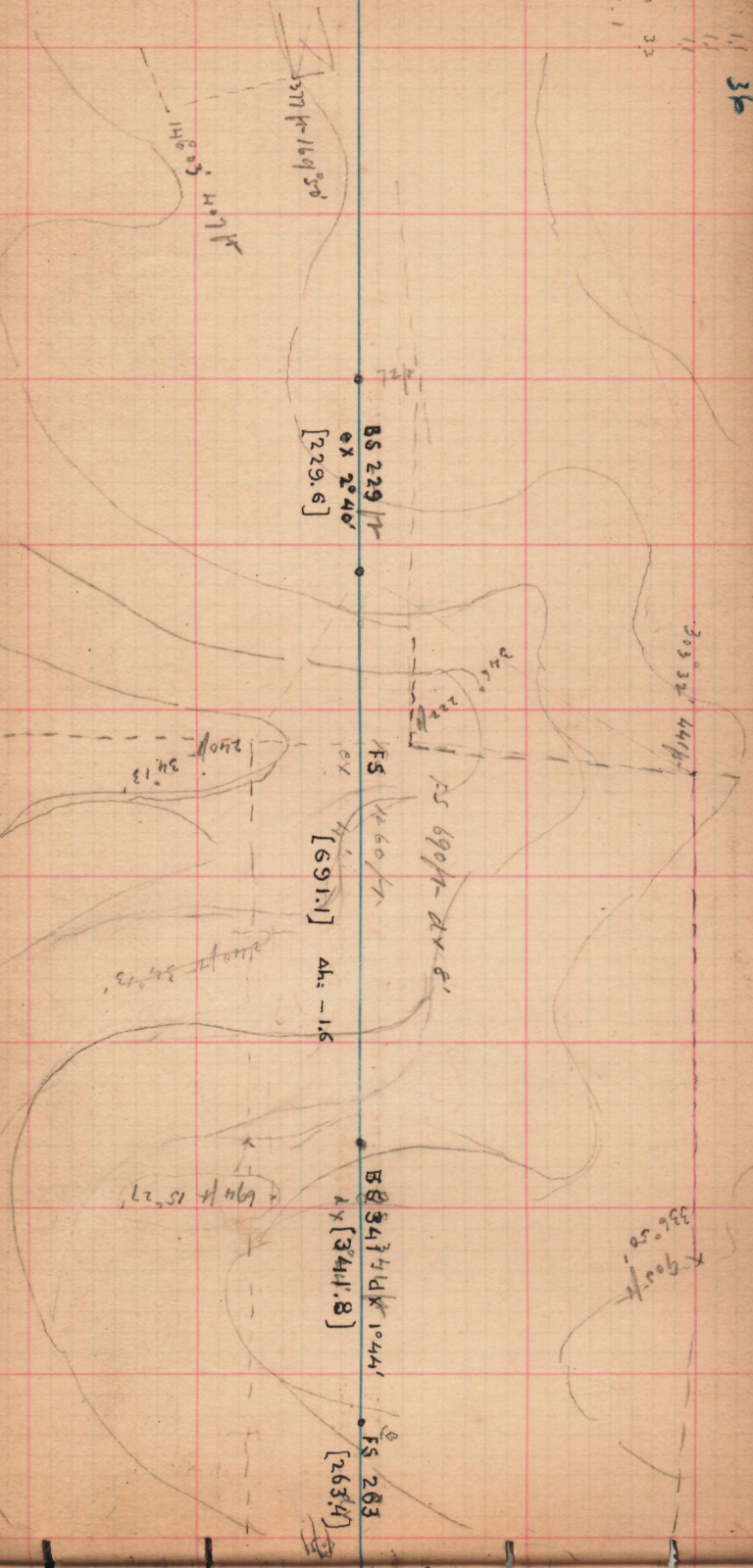
303° 32' 44.1"

256°

222°

240° 34' 13"

1110 hr 34° 23'









W. chg to 269°49'

175°34' 70° 130° 276°

340 ft  
274.37

390°  
305°20'

[549.7]  
FS 5570 ft

dx 20.54°

314 ft 30.13

524 ft 306.24

420 ft 326.12

478 ft 342.15

455 470.5

[471.2]  
400 ft 182.96

dx 1°40'

400 ft 195.67  
Promontory of S. chg to

23°07' 9 2055

120°59'1

111°15'

1844, 10.911

176°47'

Sta

26°55'

330°

320°30'

[425.5]  
dx 2°06'

FS 425 ft

226 ft 2.42

235°  
207

295°

338 ft

339.22

TP + Sta

70 ft 10.17

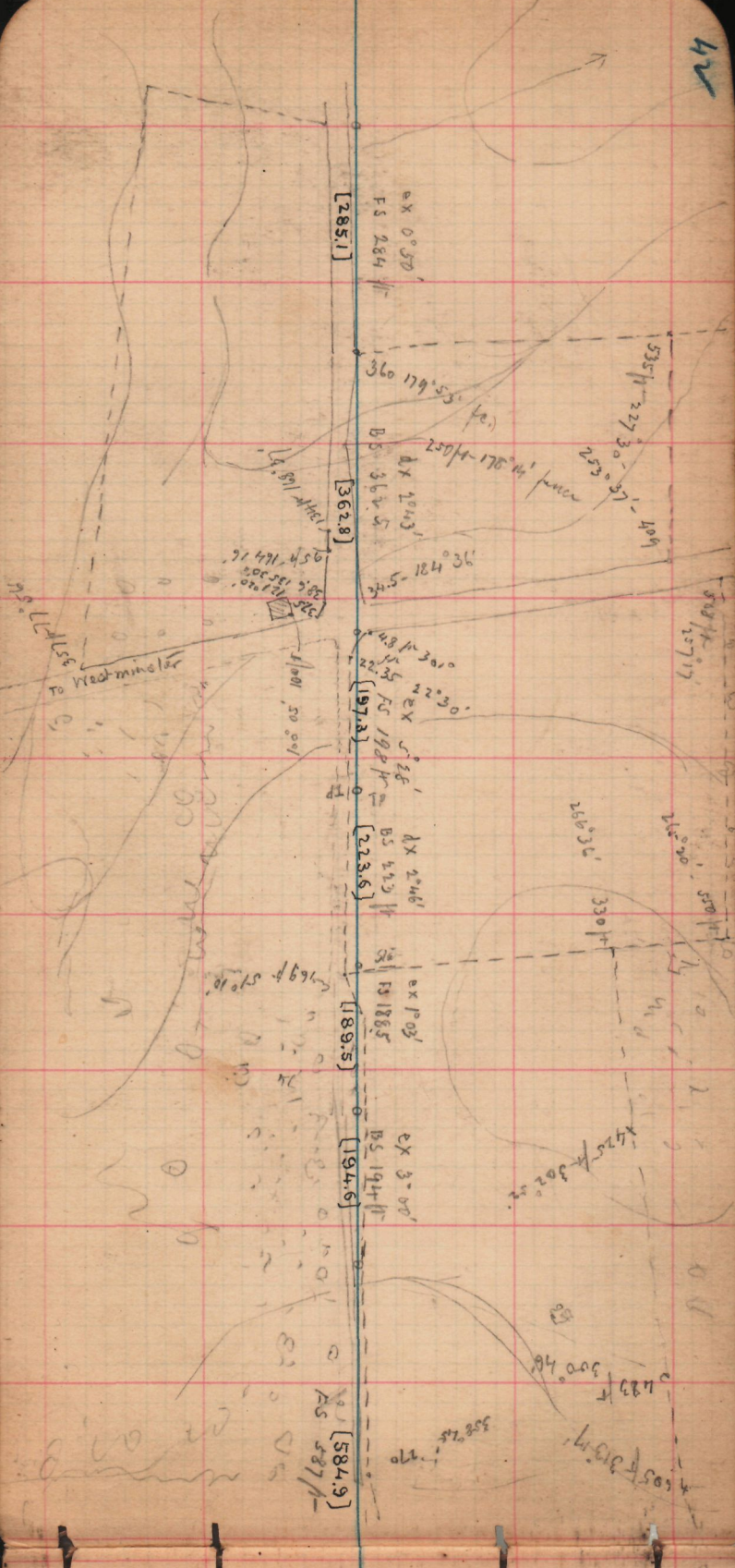
25°44' 108

[499.4]  
BS 500 ft

dx 3°

645 ft 64.30  
dx 1°18'





[285.1] EX 0°50'  
FS 284 ft

360 179°55' (to.)  
BS 362.5  
EX 104.3  
250 ft - 176°44' fence

[362.8] 345-184°36'

EX 5'28'  
FS 198 ft  
[197.2] 22°30'

BS 413 ft  
[223.6] EX 2°46'

EX 1885 ft  
[189.5]

EX 3°00'  
BS 194 ft  
[194.6]

EX 587 ft  
[584.9]

To Westminister

535 ft 227°30'  
409 ft 253°57'

266°30'

330 ft

423 ft 300°40'

455 ft 302°52'

558°25' 170'

508 ft 157°17'

550 ft

425 ft

425 ft

425 ft

425 ft

425 ft



Jan 20  
Jan 23

MP64  
2943

[504.7]

FS 504/2 ex 1038'

[187.9]

BS 167

LX 1431

BS 220  
ex 220  
142.78

90°09' West  
90°09'

[224.1]

[167.8]

[120.7]

[116.6]

[249.4]

[333.2]

Station 194 P.S. for N. by local surveyor

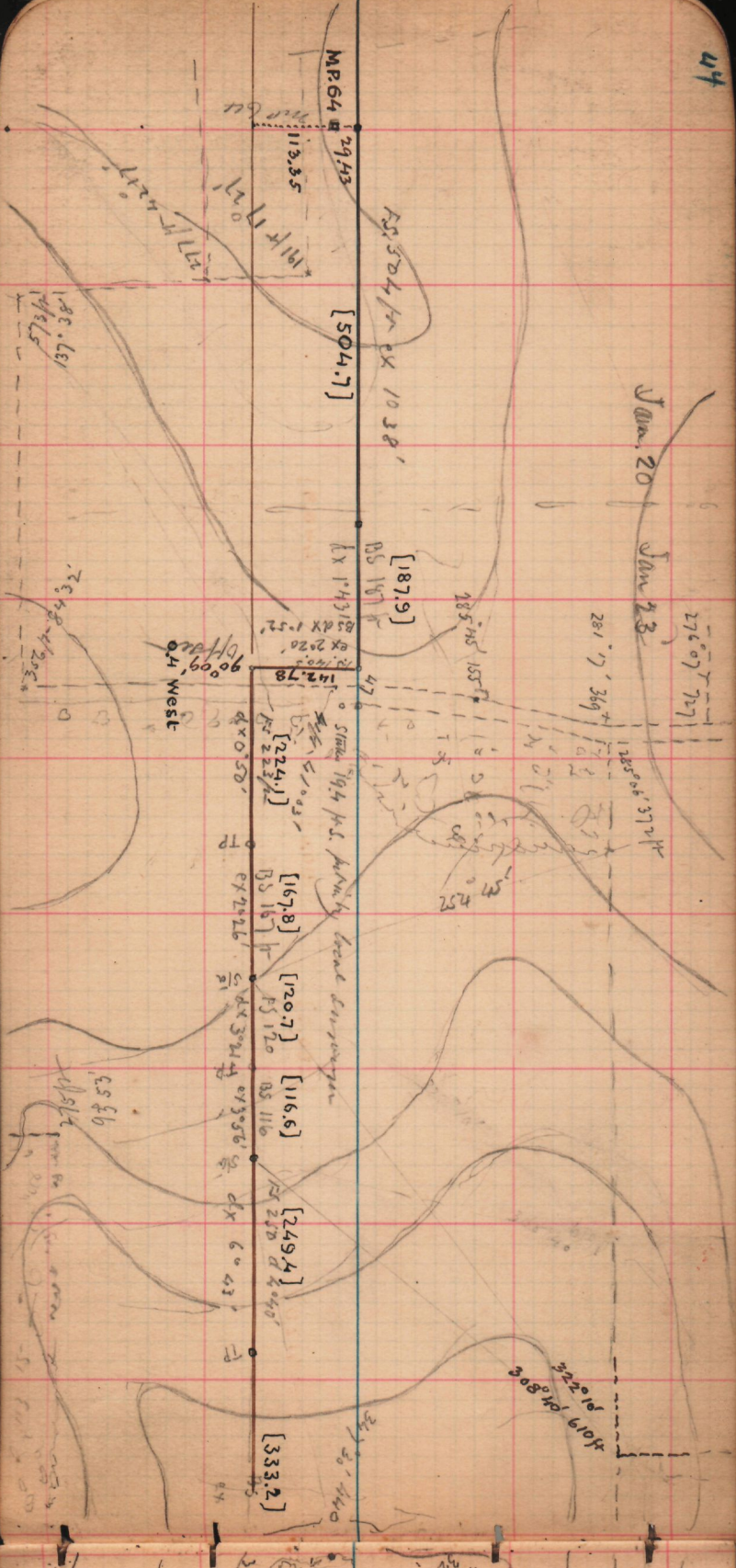
137.381  
57.361

281.7' 369'  
285.75' 155'

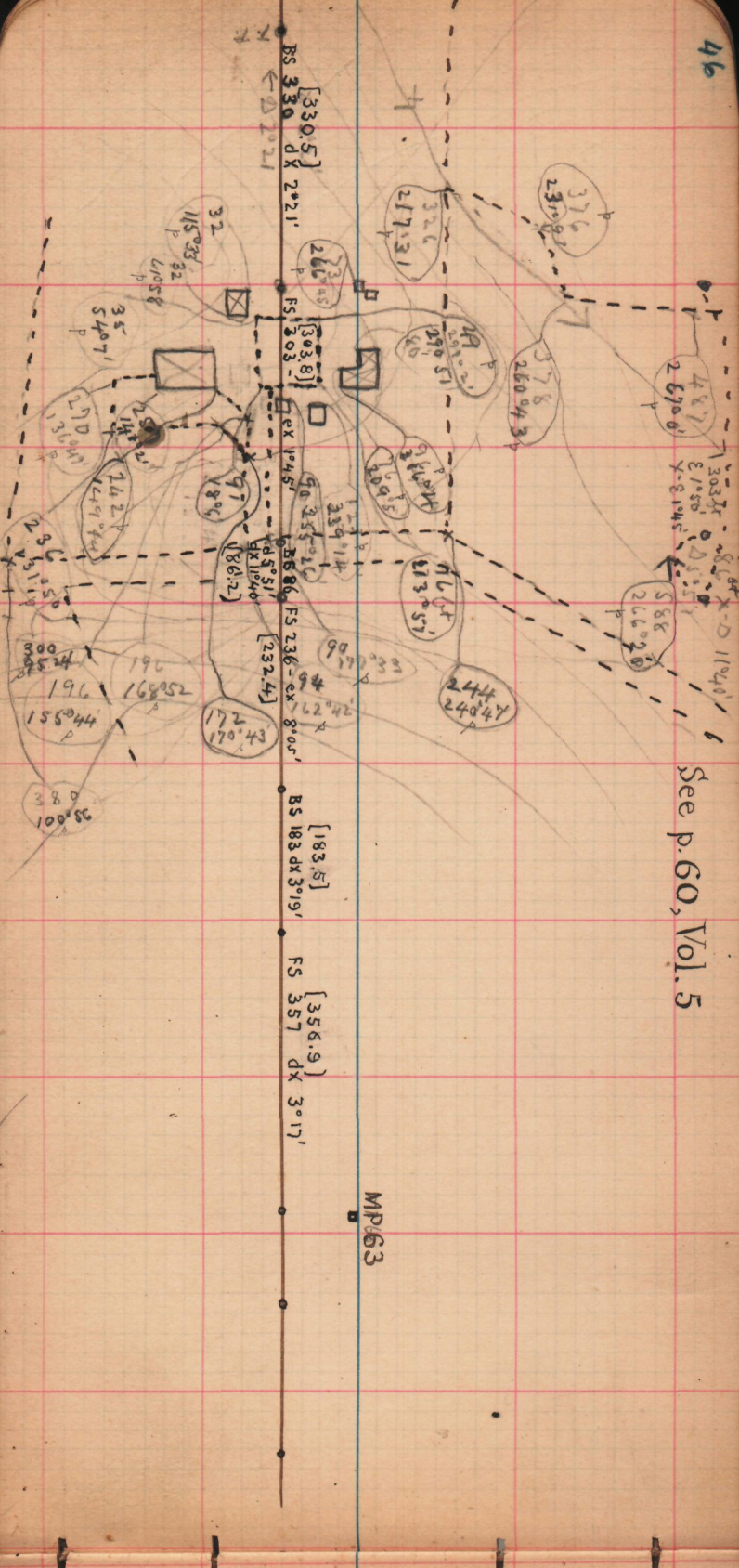
276°07' 727'

125°05' 372'

4019 0480  
3220 18  
308 0480

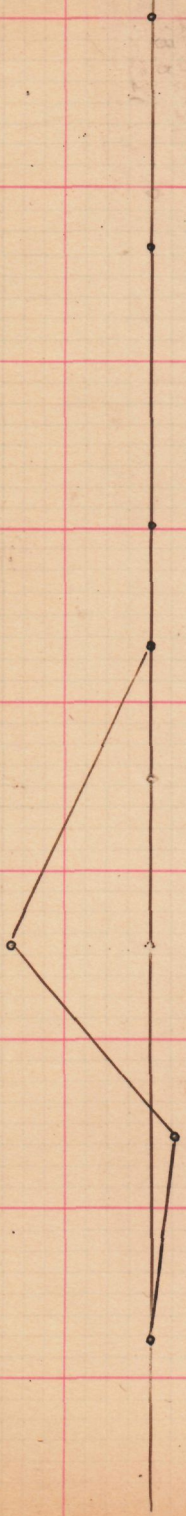






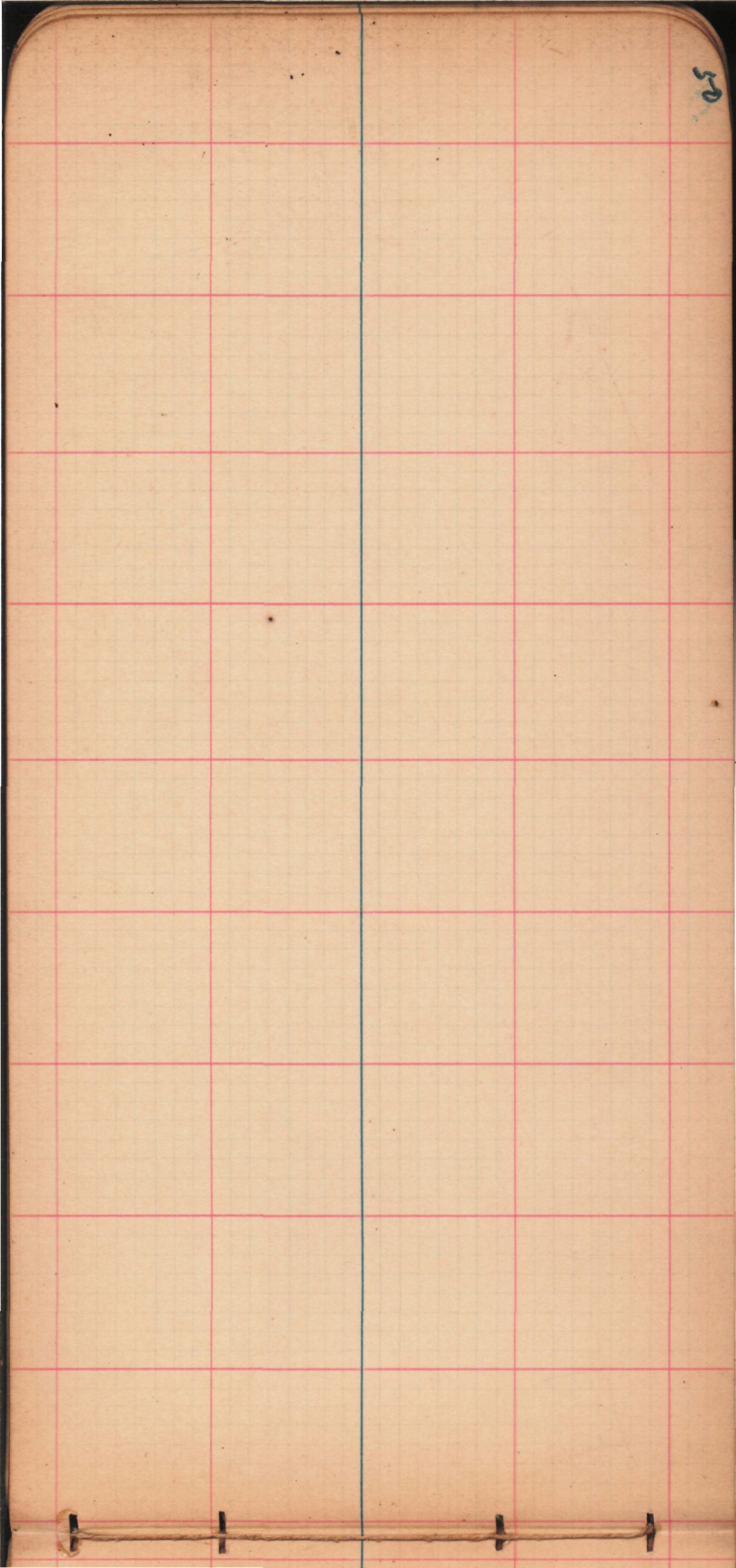
See p. 60, Vol. 5

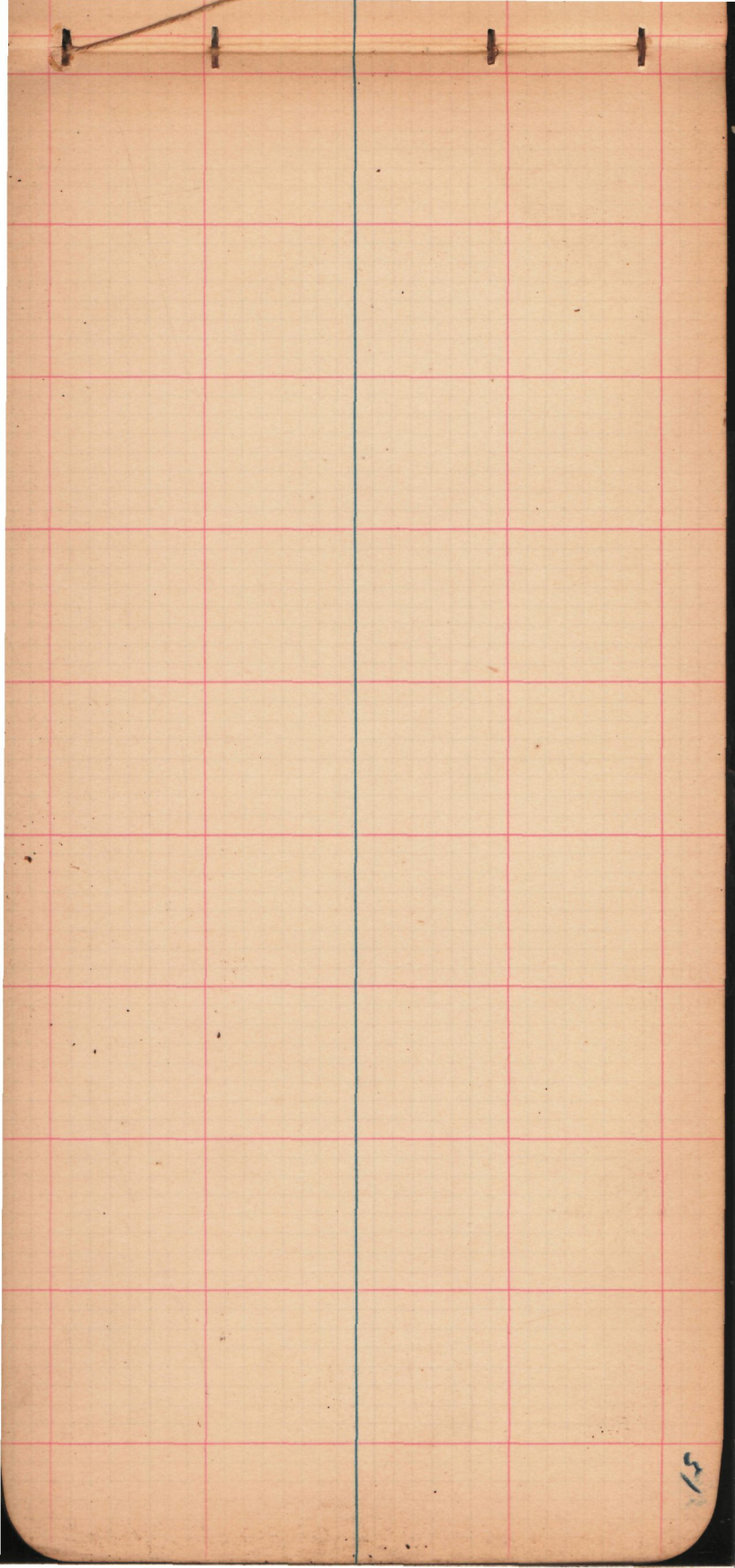
Site on  
ridge



Az  
516  
Signal

m p 62





52







d L	3.15.00.	138. 21.40	36	334.56.8	56.4
d L	3.16.20	138. 29.04	02	335.08	.08
mark		00. 07.50	44		
mark		180. 07. 20	20		
t R	3.20.13.	318. 45.18	12	204.56	53
t R	3.21.46.	319. 06.02	00	204. 42	41
r					
t R	3.23.00	319.21.30	30	204 31.8	30.8
t R	3.24.08.	319. 36.35	35	204 22	21
mark		180. 07.21	25		
mark		00. 07.52	50		
d L	3.27.45	140. 58.15	15	336. 47	47
d L	3.29.15	141. 18.00	06	337. 01	.01

Feb 19<sup>th</sup>, 1902. P.M.

Stake 150 ft E. of logzong east of mp. 58

Mark is on transit line east (near Stillz)

	Time			Hor. Circle				Vert. Circ		
	h	m	s	0	1	"	"	A	B	
d L	2	20	44	125	04	10	00	328	08	08
d L	2	22	22	125	29	15	15	328	18.6	18.4
mark L				00	01	12	04			
mark R				180	00	45	45			
p R	2	27	07	306	04	20	10	211	47.5	46.0
p R	2	28	45	306	29	30	30	211	36	35
p R	2	30	07	306	50	20	16	211	26.4	26.2
p R	2	31	25	307	10	00	00	211	17.8	16.6
mark R				180	00	40	40			
mark L				00	01	22	12			
d L	2	35	47	128	53	40	40	329	50	50
d L	2	37	16	129	15	38	32	330	07	01
d L	2	54	19	133	23	12	10	332	8.5	8.5
d L	2	55	30	133	40	00	00	332	18	17.6
mark				00	02	00	00			
mark				180	01	26	20			
p R	2	59	21	313	57	00	00	207	49	48
p R	3	00	45	314	10	45	45	207	37.9	36.9
p R	3	02	21	314	39	02	00	207	25	24
p R	3	05	35	314	55	50	51	207	10	14
mark				180	01	26	20			
mark				00	01	50	50			
d L	3	07	30	136	25	40	46	333	53.9	53.5
d L	3	09	13	136	48	55	55	334	08	08

p	R	3 <sup>h</sup> 28.10"	138.22	40.38"	200.89.8.1
p	R	3 29.42	138.42	10.10,	199.55.54.2

Mark	R	180.00	48.48.
------	---	--------	--------

Mark	L	00.01.	18.16
------	---	--------	-------

d	L	3 33.35	320.06	00.04	341.16.4.16.6
---	---	---------	--------	-------	---------------

d	L	3 35.20	320.24	48.50	341.30.30
---	---	---------	--------	-------	-----------

d	L	3 39.15	321.12	45.35	342.05.05
---	---	---------	--------	-------	-----------

d	L	3 40.25	321.26	25.21	342.10.15
---	---	---------	--------	-------	-----------

Mark	L	00.01	25.19
------	---	-------	-------

Mark	R	180.00	54.58
------	---	--------	-------

p	R	3.44.41.	141.43	58.50	197.43.42.
---	---	----------	--------	-------	------------

p	R	3 46.13.	142.00	55.55.	197.30.2.29.
---	---	----------	--------	--------	--------------

p	R	3.49.52	142.44	25.21	196.56.55
---	---	---------	--------	-------	-----------

p	R	3 51.10.	142.59	21.19.	196.44.8.44
---	---	----------	--------	--------	-------------

Mark	R	180.00	54.50
------	---	--------	-------

Mark	L	00.01.	15.13
------	---	--------	-------

d	L	3 55.10	324.19	10.10	344.29.29.
---	---	---------	--------	-------	------------

d	L	3 56.40	324.36	40.40	344.43.4.43.2
---	---	---------	--------	-------	---------------

Feb 7 1902

Pm,

Stat Blake m ridge E. of Wentz P.O.

Time Hor. Circle West Circle

d L	2 55 08	311.50 35.25	336.01 .01
d L	2 56 26	312 08 15.05	336.11 .11

mark E			
mark R		360.00 42 30	
		180.00 35 35	
DR	3 00 40	182.29 40 30	203.53 55 52.7
DR	3 01 58	182.47 05 01	203 44 .43

DR	3 03 45	183.10 55 51.	203.29.7 28.7
DR	3 05 17	183.31.00 54	203.17.9 16.9

mark R		180.00.50 40	
mark L		00.00.35 29	
d L	3 10 50	315.18 22 14	338.4.5 4.1
d L	3 12 29	315.38.55 41.	338 17. 17

d L	3 18 55	317.01.55 43	339.10 10
d L	3 20 24	317.20 25 15	339.22. 22.2
mark L		00.01.10. 00	
mark R		180.00.48 52	

DR	3 24 41	137.40 55 51.	200 37.7 36.9
DR	2 26 15	137.59 22 20	200 25 24.2

P R 2.26'32. 34° 17' 10." 00" 207.49.47.4  
 P R 2.28'08. 34° 40.00. 10 207.38.36.8

Mark R 180.01.10.10  
 Mark L 360.00.52.46

d L 2.32.40. 216° 21.42.36 338.34.8.34.0  
 d L 2.34.50 216 52.20 10 333.50.49.4  
~~2.34.50~~

d L 2.40.40 218° 04.05 01 334.29.5.28.7  
 d L 2.42.29 218° 39.05 57 334.42.54.8

mark L 360.00.48.46  
 mark R 180.01.12.10

P R 2.47.13. 39.10.52.42 205.27.26.  
 P R 2.48.39 39.30.30. 20 205.16.3.15.7

P R 2.50.00 39° 49.05.59 205.06.05  
 P R 2.51.21 40° 07.42.34 204.56.58

Mark R 180° 01.10.10"  
 Mark L 360.00.50.50

d L 2.55.45 221.41.50 40 336.19.4.19.0  
 d L 2.57.33 222.06.02.50 336.33.1.32.9  
 3

Line W,                    "   "   "  
 + Mark                    0) 6 00 00 00  
                              1) 89 38 50  
                              3) 268 56 04 56  
                              3) 177 51 50 58  
                              55 55

Feb 6 P.M.

	Time	Hor. Circ	Vert. Circ
☉	L 154.55	206.51.50.40	329.50.5.52.5
☉	L 156.07	207.12.55.45	329.57.2.57.0

mark L 360.00.45.39.  
 mark R 180.01.00.00

☽	R 200.35	27° 47' 15" 05	210.21.8 20.6
☽	R 203.02	28° 24' 20" 10	210.08.6 17.4

☽	R 204.40	28° 49' 30" 20	210.00. 58.6
☽	R 206.03	29° 10' 45" 35	209.52. 50.8

mark R 180.01.10.10  
 mark L 360.00.50.40

☽	L 210.40	210° 57' 25" 15	331.16.8 16.4
☽	L 212.15	211.20' 20" 20	331.26.3 25.9

☽	L 217.20	212.37' 18" 10	331.57. 56.8
☽	L 219.54	213.01. 10. 00	332.65. 16.1

mark L 360.00.50.40  
 mark R 180.01.12.12

☽	R 2.23.27	33.32.30.30	208.08.7. 9.5
☽	R 2.25.00	33.55.05.05	207.58. 57

☽	R 2.26.32	34° 17' 10" 00	207.49. 47.4
☽	R 2.28.08	34° 40' 00" 00	207.38. 36.8

26 522  
26393  
          
129

522  
511  
          
007



Jan. 24 - 1902

w. of mp 68

Angles at angular pt W. of Ball. Pit  
Z of mark from South by East 114° 27' 93"

Mark 0° 00' 05" -  $\frac{B}{55}$ "

S-Pole east (1) 24° 42' 35"

(3) 74° 07' 30" - 25"

(3) 148° 15' 10" - 16"

24 42 30.0

245 27 56

270 10 26

azimuth of mark

" " S. line

Mark 0° 00' 05" -  $\frac{B}{55}$ "

N-Pole East (1) 24° 23' 00"

(3) 73° 08' 15" - 05"

(3) 146° 16' 15" - 15"

24 22 42.5

diff 19 47.5

245 27 56

24 22 43

Z of N line = 269 50 39

at New State about of mp 68

west line 180° 00'

mp 68 270 47'

old State S 90 42' 12.6'

At new state on lake

N. line 0 00'

Bandy State 81 22 170.18 168.29.1

old State S 261 07' 1/2 183.5

No 66 - 44.94 ft  
88° 53' fm W.

AUG 17 1903  
ACCG. IVO.

#68 - 90° 27' fm W.

~~B.S.~~ 20.5 E 105° 7' 35.75  
35.49  
35.58  
B.S. 170. D 74° 7' 7.71 181.51 ft.  
36.98  
#67 - 76° 46' - fm W.

102.3  
1.1  
101.2  
202.4  
1.1  
203.5

56.73  
50.91  
30.21  
22.57  
140.42

181  
152  
29

1 = 280° 25'  
2 = 283° 24'

B.S. 168 D 5° 50' X - 5026  
F.S. 225 E 58' X - 59'  
B.S. 190 E 102' X - E 1020  
F.S. 125 D 30 1/4 X - 2056

89.8  
67.2  
157.0  
92.4  
66.38  
158.78

B.S. - 142 x 2 = 284 D 30° 55' X - D - 3056  
F.S. - 474 - E 3° 35' X - E 3° 31'

B.S. - 196 - D 3° 45' X - D 3° 45'  
F.S. - 191 - E 1° 8' X - E 1025'

B.S. - 182 - D 29' X - E - 11'  
F.S. - 255 - D 2° 2' X - D 1059'

265 207  
W  
E  
1903

Reflections by N. on p. 2. of 58<sup>th</sup> M. P.

0	0	0	0	0	0
1	179	57	10		
3	179	52	55	55	55
3	309	45	55	55	45
		52			55
		53			0.

55  
55