

FORM 274.

Treasury Department,

U. S. COAST AND GEODETIC SURVEY,

*O. H. Tittmann*, Superintendent.

States: *Pa. - Md* 55825

# SKETCHBOOK.

## ABSTRACT OF CONTENTS:

*Mason and Dixon Line  
westward from a point  
867 feet west of M.P. 107  
to the Summit of Two-top Mt.,  
about 1/3 mile west of M.P. 115*

*(R. H. Blair)*

1903

## CHIEF OF PARTY:

*W. C. Hodgkiss*

Vols.

Vol. 12

U. S. G. & G. SURVEY.  
LIBRARY AND ARCHIVES  
AUG 17 1903  
Acc. No. 55825

FORM 274.

Treasury Department,

U. S. COAST AND GEODETIC SURVEY,

....., Superintendent.

State: .....

# SKETCHBOOK.

ABSTRACT OF CONTENTS:

.....  
.....  
.....  
.....  
.....  
.....  
.....

190

CHIEF OF PARTY:

..... Vols.

Vol. ....





805 pm pt at Browns River fence to station  
 in corner east  
 406.0 for them to pt by em jone

685  
 49  
 734

805  
 734  
 71  
 694.00  
 67.00  
 64.40  
 16.00  
 (0.882)

801  
 41  
 324  
 412

738  
 321  
 412

802  
 21  
 562.1  
 61.82

803  
 21  
 732  
 320  
 412

321  
 2457  
 2457  
 27.027  
 334

351  
 682  
 702  
 2808  
 3095.2

351  
 31  
 320

337  
 2359  
 2359  
 25949

337  
 822  
 674  
 2696  
 297234

307

337  
 31  
 22.00  
 23.59  
 24.10  
 (.077)

337  
 47  
 58











FS. 511

[511.47]

D 2088'  
7-D-2089'

[259.07]

BS 261  
D 693'  
7-D-945'

[250.57]

BS 261  
D 403'  
7-D-545'

[304.57]

BS 304  
D 203'  
7-D-3037'

[409.17]

BS 408  
D 082'  
7-D-019'

[426.67]

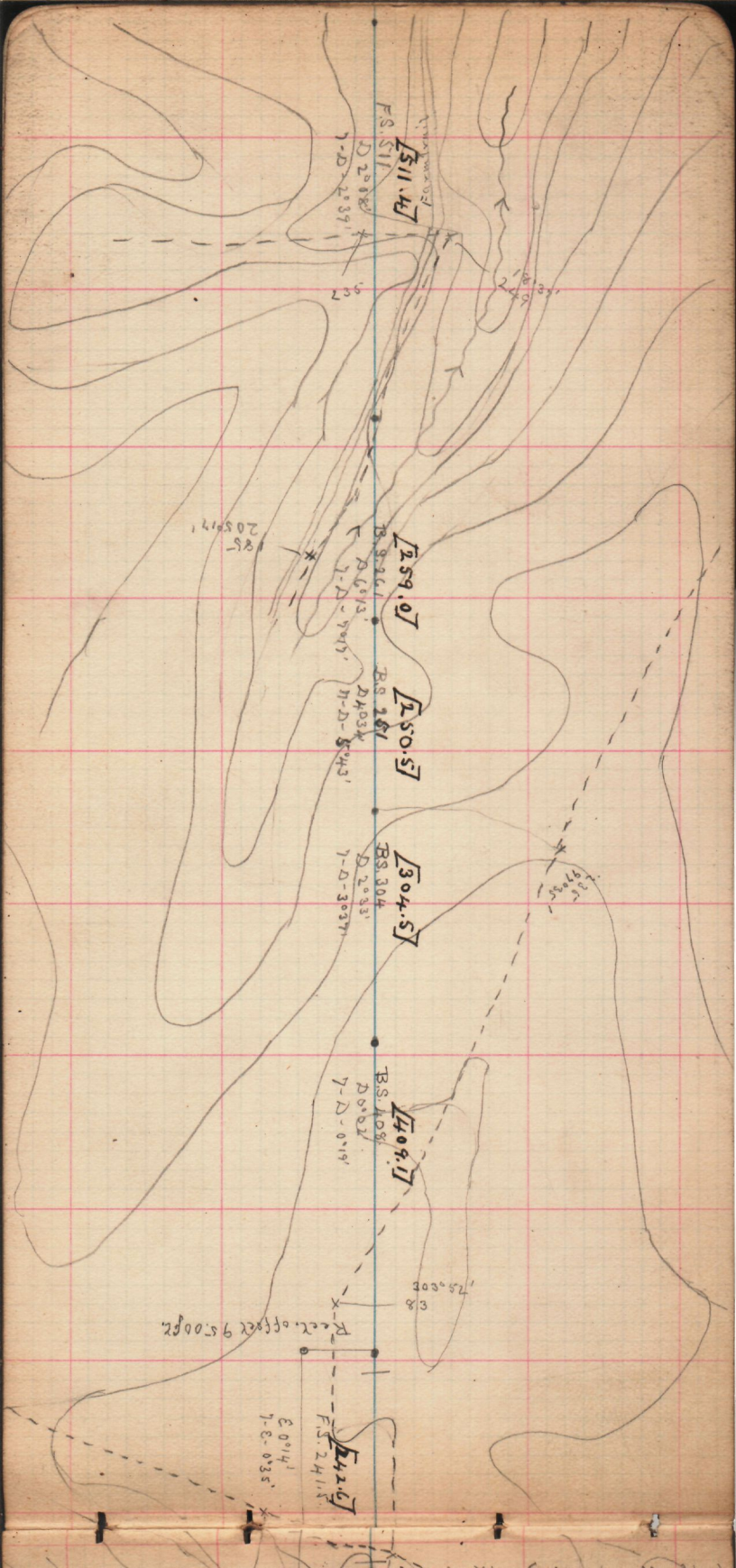
FS. 2411  
E 0'14"  
7-C-0'35"

Rec. offset 95.00 gr

75.00  
38

205  
205.12

97.35







[455.8]

B.S. 1455

E 1926  
7-C-1928

[217.7]

F.S. 216

8 894  
7-D-1928

[320.7]

F.S. 326

D 2190  
7-D-1928

[319.3]

B.S. 319

2 848  
7-D-1928

[451.1]

F.S. 450

D 0314  
7-D-1928

Public Road

Woods

Woods

Woods

Woods

Woods

Woods

Woods

Woods

Woods

Woods

Woods

Woods

Woods

Woods

Woods

Woods

Woods

Woods

Woods

Woods

Woods

Woods

Woods

210  
276.00

71.52  
224

470

155.62  
242

78.14  
145

144.44  
211.52

152  
288.00

215.88  
298

196.87  
158

71.80  
275

490  
293.44

342  
217.22

490  
293.44

490  
293.44

490  
293.44

490  
293.44

490  
293.44

490  
293.44

490  
293.44

490  
293.44

490  
293.44

490  
293.44

107.20  
128

147  
103.00

105.11  
112

156.07

92.27  
86

156.07

156.07

156.07

156.07

156.07

156.07

156.07

156.07

156.07

156.07

156.07

156.07

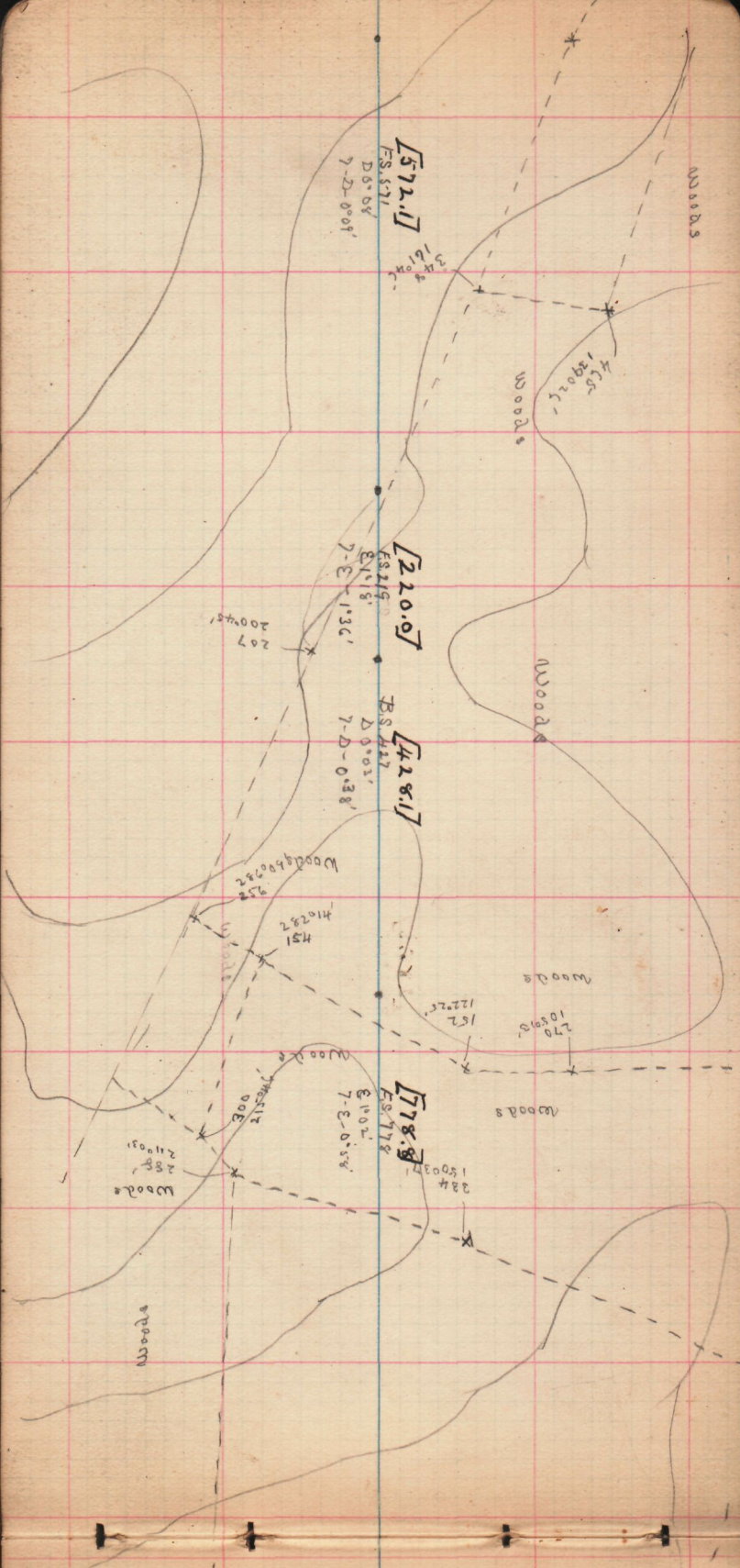
156.07

156.07

156.07

522  
380.72

252  
90.16



5000M

[491.8]  
B.S. 491  
D 1°36'  
7-D-2°01'

506  
34022'

440152  
292°34'  
292  
292

504  
87944'  
276  
81237'  
268  
86948'  
506  
92221'  
502  
94322'

5000M

White Post No. 110  
271°57' - 10.82 ft - North  
Recl. offset - 10.81  
Sta west .37

[285.5]  
B.S. 2845  
D 1°16'  
7-D-1°24'

Logenge 40.30 ft

[471.1]  
B.S. 470  
D 0°32'  
7-D-1°00'

469  
245004  
833522  
836  
40012  
140°53'

[516.0]  
B.S. 515  
E 08°1'  
7-C-0°47'

314  
91°38'

312

Public Road

476.17

BS 475  
D 0031'  
7-D-00191

310  
9542'

11292  
216  
918

411.97

FS 411  
D 1024'  
7-D-10591

382  
100261

200002  
24

273.17

BS 272  
D 0411  
7-D-10143

401.17

FS 400  
D 0034'  
7-D-0034'

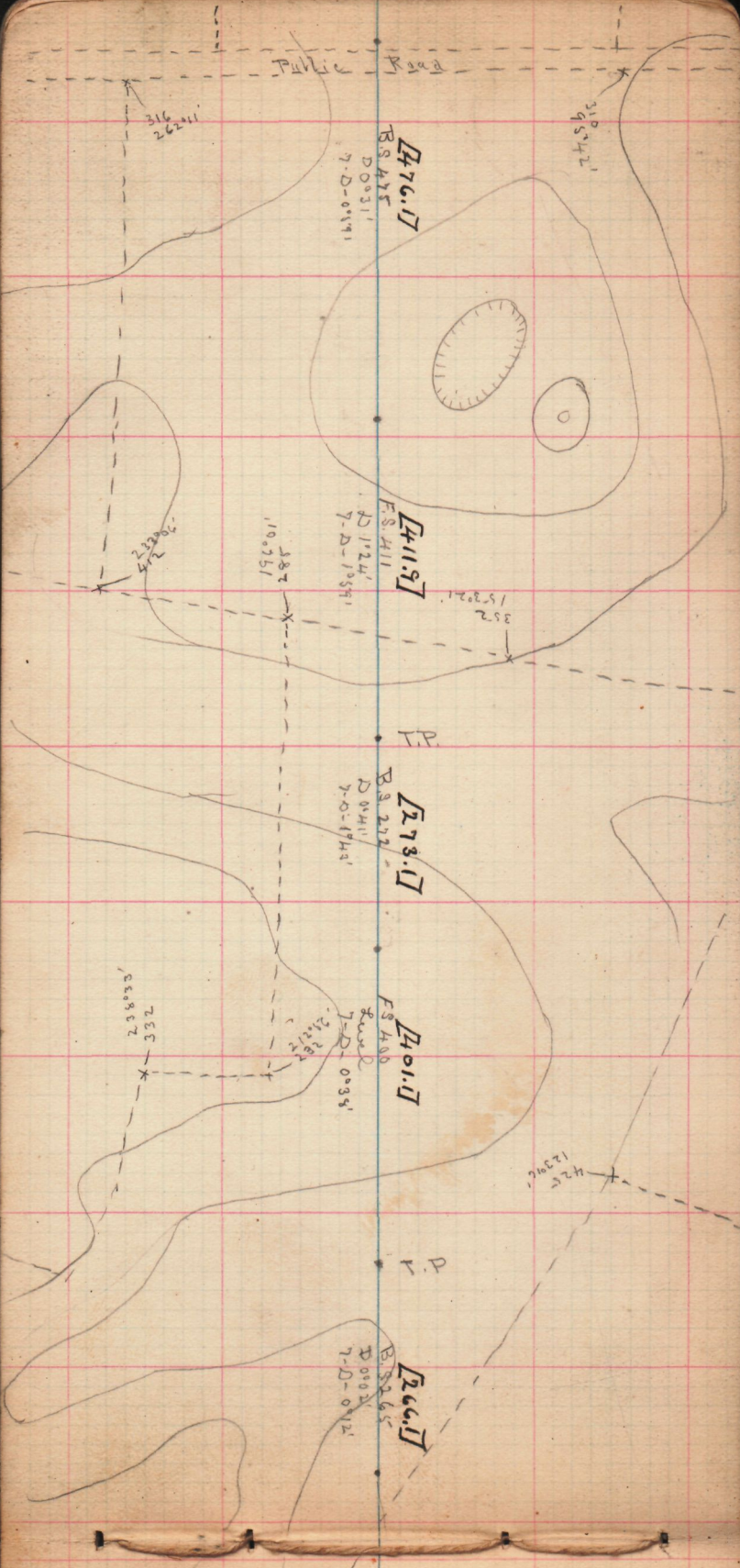
735  
55852

260.17

BS 265  
D 0002'  
7-D-0012'

425  
12396'

D.V.







FS 478  
E 0°38'  
7-E-0°34'

479.0

BS 438  
D 5°06'  
7-D-5°39'

435.0

FS 511  
E 0°22'  
7-C-0°19'

512.0

BS 366  
D 0°05'  
7-D-0°39'

367.0

524  
5145'

298  
100°08'

450  
472  
272

163  
183°30'

74  
76  
781

FS  
E  
7-

[L10.37]

F.S. 411  
E 39°50'  
7-E-3958'

[L64.77]

B.S. 414  
A 18°44'  
7-D-2018'

[L30.47]

F.S. 430  
E 20°17'  
7-E-2025'

[L43.77]

B.S. 243  
A 20°25'  
7-D-3037'

[L33.37]

F.S. 333  
E 1°34'  
7-E-1942'

170847  
072

132.08  
255

90.53

253

136

143.27

104

129.53

Public Room

262

2618

160

200

239

255

262

2618

158

200

239

255

262

262

2618

160

149

104

146

183.17

262

2618

160

262

2618

160

149

104

262

2618

160

149

104

262

2618

160

149

104

262

2618

160

149

104

262

2618

160

149

104

262

2618

160

149

104

262

2618

160

149

104

262

2618

160

149

104

262

2618

160

149

104

262

2618

160

149

104

262

2618

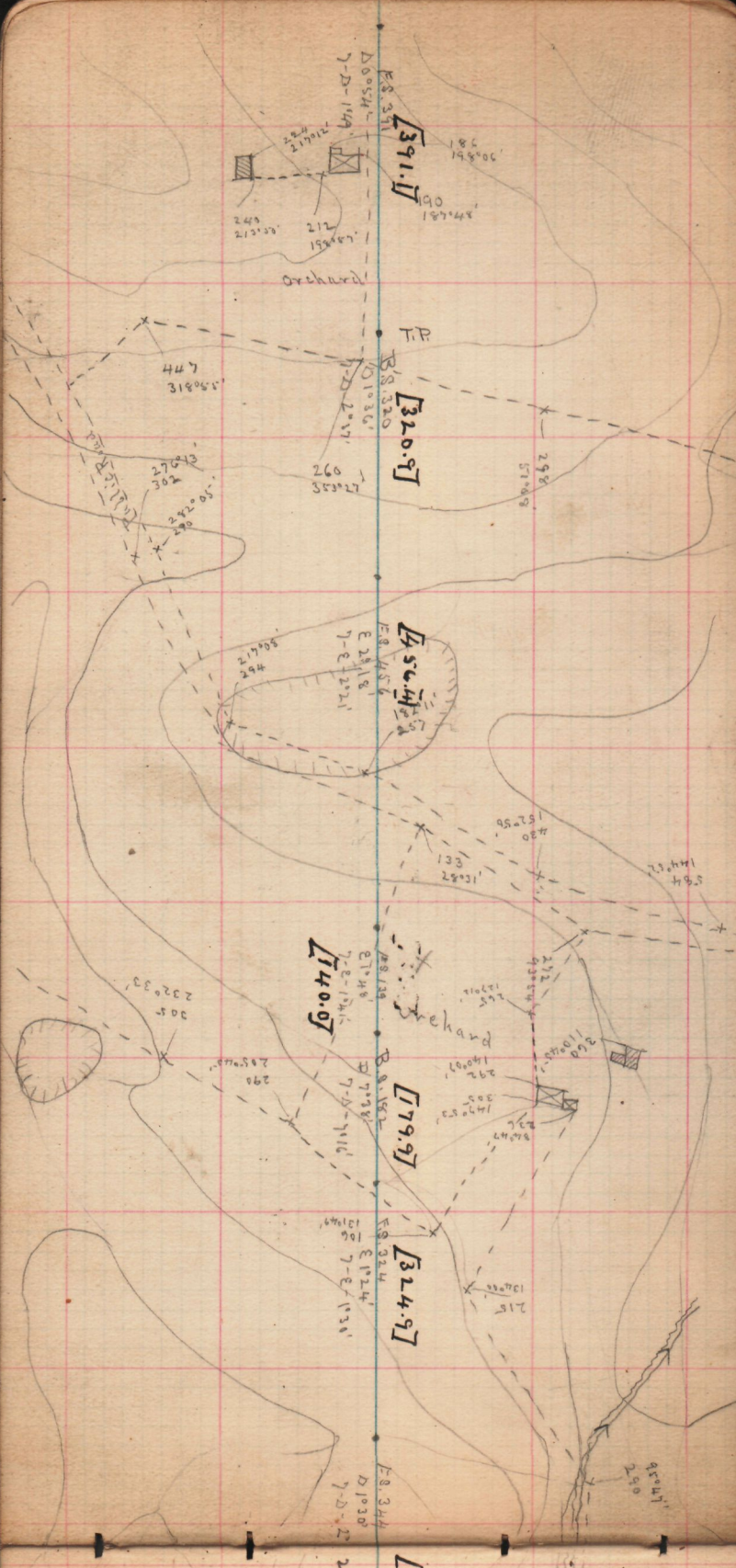
160

149

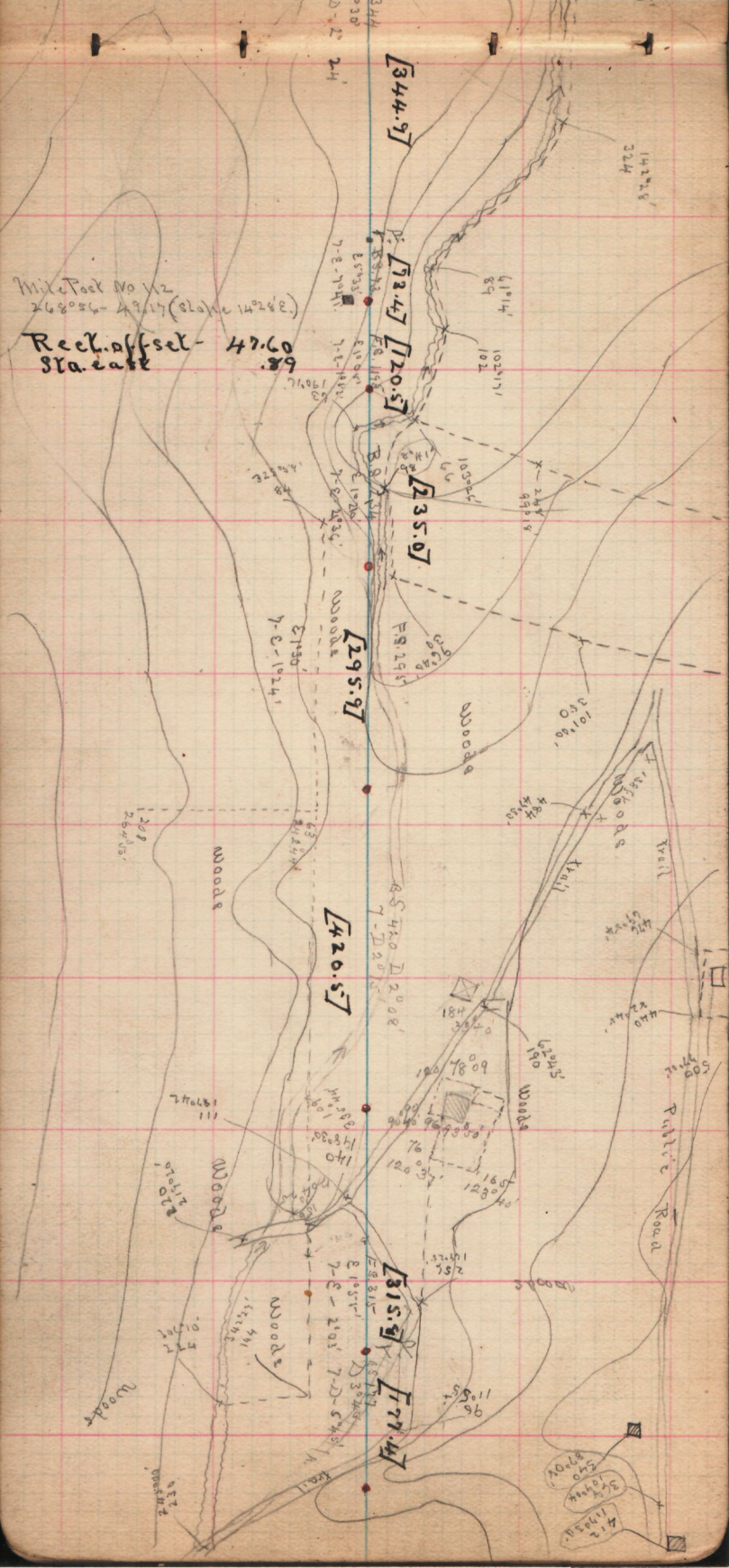
104

Balance of Roll on  
next page

Stop



Mile Post No 12  
268086-49117 (Sta) (1428'E)  
Reck. offset - 47.60  
Sta. east .89



[386.07]

7-E 39° 18'

[314.07]

7-D 69° 40'

[41.97]

7-E 60° 44'

[228.17]

7-D 64° 49'

[245.67]

7-E 62° 20'

[303.77]

7-D 60° 16'

[306.67]

7-D 20° 38'

Trail

Trail

Main Road

Trail

Trail

Trail

312  
12290

82  
441  
2932

A  
162° 35'  
174° 54'

102° 50'  
127° 50'

100° 20'  
260

396  
26690

100  
100  
100  
100

fs 966 2332

AS 216 75042

E 49° 10'

D 4° 29'

E 54° 1'

139 308

E 2° 20'

fs 306

AS

Powell Mountain

Millers Road

Malin Road

[37.8]

[30.3]

[80.4]

[5.7]

[29.4]

[82.5]

[51.3]

[310.8]

[59.9]

[71.8]

[87.7]

E 53.3°  
7-E-67.0'

7-D-12.4'

7-D-15.0°

7-D-19.0°

7-D-8.22'

E 5.0°-2.25  
7-E-6.04'

D 11.0°  
7-D-13.50'

7-D-11.22'

7-D-11.07

D 12.04°  
7-D-14.07

E 5.0°  
7-E-8.44'

7-D-9.38'

D 7.10°  
7-D-9.38'

7-D-14.24'

D 14.28'

7-D-14.24'

7-D-13.0'

7-D-13.0'

7-D-13.0'

7-D-11.22'

7-D-11.07

D 12.04°

9.68

7-D-9.38'

D 7.10°

7-F-8.138'

7-D-9.46'

7-D-14.24'

7-D-13.0'

7-D-13.0'

7-D-13.0'

7-D-11.22'

7-D-11.07

D 12.04°

9.68

7-D-9.38'

D 7.10°

7-F-8.138'

7-D-9.46'

7-D-14.24'

7-D-13.0'

7-D-13.0'

7-D-13.0'

7-D-11.22'

7-D-11.07

D 12.04°

9.68

7-D-9.38'

D 7.10°

7-F-8.138'

7-D-9.46'

7-D-14.24'

7-D-13.0'

7-D-13.0'

7-D-13.0'

7-D-11.22'

7-D-11.07

D 12.04°

9.68

7-D-9.38'

D 7.10°

7-F-8.138'

7-D-9.46'

7-D-14.24'

7-D-13.0'

7-D-13.0'

7-D-13.0'

7-D-11.22'

7-D-11.07

D 12.04°

9.68

7-D-9.38'

D 7.10°

7-F-8.138'

7-D-9.46'

7-D-14.24'

7-D-13.0'

7-D-13.0'

7-D-13.0'

7-D-11.22'

7-D-11.07

D 12.04°

9.68

7-D-9.38'

D 7.10°

7-F-8.138'

7-D-9.46'

7-D-14.24'

7-D-13.0'

7-D-13.0'

7-D-13.0'

7-D-11.22'

7-D-11.07

D 12.04°

9.68

7-D-9.38'

D 7.10°

7-F-8.138'

7-D-9.46'

7-D-14.24'

7-D-13.0'

7-D-13.0'

7-D-13.0'

7-D-11.22'

7-D-11.07

D 12.04°

9.68

7-D-9.38'

D 7.10°

7-F-8.138'

7-D-9.46'

7-D-14.24'

7-D-13.0'

7-D-13.0'

7-D-13.0'

7-D-11.22'

7-D-11.07

D 12.04°

9.68

7-D-9.38'

D 7.10°

7-F-8.138'

7-D-9.46'

7-D-14.24'

7-D-13.0'

7-D-13.0'

7-D-13.0'

7-D-11.22'

7-D-11.07

D 12.04°

9.68

7-D-9.38'

D 7.10°

7-F-8.138'

7-D-9.46'

7-D-14.24'

7-D-13.0'

7-D-13.0'

7-D-13.0'

7-D-11.22'

7-D-11.07

D 12.04°

9.68

7-D-9.38'

D 7.10°

7-F-8.138'

7-D-9.46'

7-D-14.24'

7-D-13.0'

7-D-13.0'

7-D-13.0'

7-D-11.22'

7-D-11.07

D 12.04°

9.68

7-D-9.38'

D 7.10°

7-F-8.138'

7-D-9.46'

7-D-14.24'

7-D-13.0'

7-D-13.0'

7-D-13.0'

7-D-11.22'

7-D-11.07

D 12.04°

9.68

7-D-9.38'

D 7.10°

7-F-8.138'

7-D-9.46'

7-D-14.24'

7-D-13.0'

7-D-13.0'

7-D-13.0'

7-D-11.22'

7-D-11.07

D 12.04°

9.68

7-D-9.38'

D 7.10°

7-F-8.138'

7-D-9.46'

7-D-14.24'

7-D-13.0'

7-D-13.0'

7-D-13.0'

7-D-11.22'

7-D-11.07

D 12.04°

9.68

7-D-9.38'

D 7.10°

7-F-8.138'

7-D-9.46'

7-D-14.24'

7-D-13.0'

7-D-13.0'

7-D-13.0'

7-D-11.22'

7-D-11.07

D 12.04°

9.68

7-D-9.38'

D 7.10°

7-F-8.138'

7-D-9.46'

7-D-14.24'

7-D-13.0'

7-D-13.0'

7-D-13.0'

7-D-11.22'

7-D-11.07

D 12.04°

9.68

7-D-9.38'

D 7.10°

7-F-8.138'

7-D-9.46'

7-D-14.24'

7-D-13.0'

7-D-13.0'

7-D-13.0'

7-D-11.22'

7-D-11.07

D 12.04°

9.68

7-D-9.38'

D 7.10°

7-F-8.138'

7-D-9.46'

7-D-14.24'

7-D-13.0'

7-D-13.0'

7-D-13.0'

7-D-11.22'

7-D-11.07

D 12.04°

9.68

7-D-9.38'

D 7.10°

7-F-8.138'

7-D-9.46'

7-D-14.24'

7-D-13.0'

7-D-13.0'

7-D-13.0'

7-D-11.22'

7-D-11.07

D 12.04°

9.68

7-D-9.38'

D 7.10°

7-F-8.138'

7-D-9.46'

7-D-14.24'

7-D-13.0'

7-D-13.0'

7-D-13.0'

7-D-11.22'

7-D-11.07

D 12.04°

9.68

7-D-9.38'

D 7.10°

7-F-8.138'

7-D-9.46'

7-D-14.24'

7-D-13.0'

7-D-13.0'

7-D-13.0'

7-D-11.22'

7-D-11.07

D 12.04°

9.68

7-D-9.38'

D 7.10°

7-F-8.138'

7-D-9.46'

7-D-14.24'

7-D-13.0'

7-D-13.0'

7-D-13.0'

7-D-11.22'

7-D-11.07

D 12.04°

9.68

7-D-9.38'





woods

woods

woods

woods

woods

Rickert's Main Run

[05.37]

[02.77]

[24.27]

[00.77]

[42.47]

[21.17]

[71.07]

[01.97]

[33.87]

[07.57]

[27.37]

[56.77]

ES 1095  
D 12099  
7-D-16210  
7-D-7918  
7-D-0900

ES 1102  
D 11130  
D 09128  
ES 1144  
D 70611  
D 10126  
7-D-14508  
7-D-18211

ES 1044  
D 16520  
7-D-15231  
ES 1145  
D 19038  
7-D-19110  
7-D-22238  
ES 1175  
D 19491  
7-D-22238  
ES 1149  
D 22202  
7-D-22238

ES 1166  
D 14229  
7-D-16431

Woods

[167.1]

FS 1283  
D 12958'  
7-D-14°54'

Woods

[135.1]

FS 137  
D 8°18'  
7-D-11°02'

Woods

[204.3]

FS 2095  
D 10°00'  
7-D-11°24'

Woods

[179.8]

FS 183  
D 8°46'  
7-D-10°44'

[236.8]

FS 142  
D 9°16'  
7-D-10°21'

Woods

[31.3]

FS 137  
D 6°14'  
7-D-9°31'

Woods

[268.3]

FS 271  
D 6°43'  
7-D-7°49'

33711  
236

[562.1]

FS 203  
D 2°41'  
7-D-4°6'

Woods

210  
4745

[376.3]

FS 376  
D 2°36'  
7-D-3°26'

From South Line  
Mile Post No 114  
271°44' - 10198 ft

From North Line  
0.52 ft - 90°00'

[269.07]

[316.57]

[392.07]

468.5

[512.97]

ES. 269

ES. 316

ES. 391

ES. 470

ES. 517

D 0°40'  
7-D - 4°43'

D 2°50'  
7-D - 3°54'

D 0°59'  
7-D - 1°45'

D 4°17'  
7-D - 4°45'

D 2°45'  
7-D - 8°18'

Blair's Valley Road

Line to Henry Malone

woods

woods

291°00'  
252'

285°17'  
252'

214°09'  
345'

274°30'  
252'

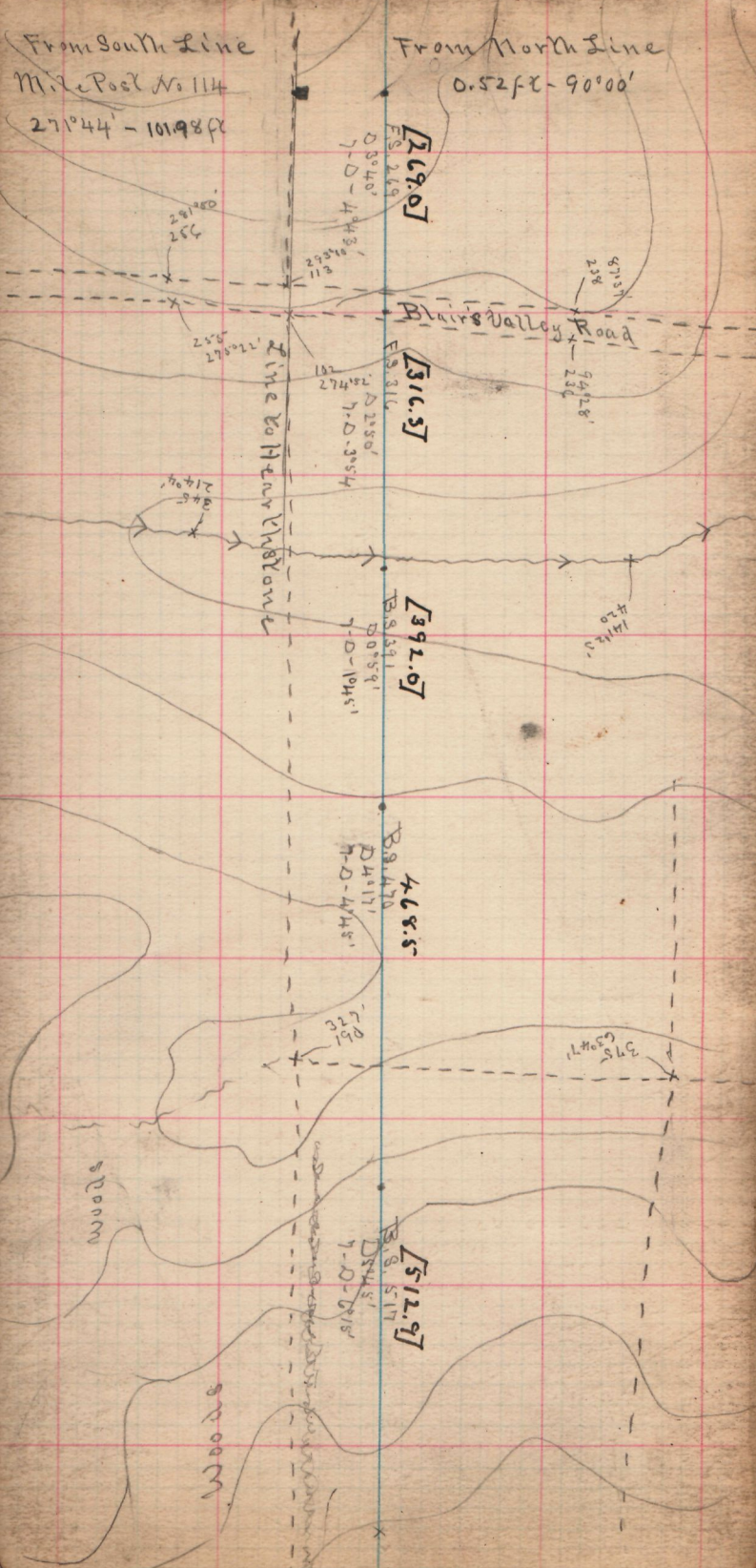
87°37'  
258'

94°128'  
230'

141°25'  
470'

395°50' 11'

225°  
252'



Woods

Woods

Woods

Woods

Woods

Woods

Woods

Woods

Woods

North

South

[201.5]

B.S. 202  
D. 5'10"  
7-D-6'14"

285  
1020'

[264.6]

B.S. 270  
D. 8'0"  
7-D-10'00"

154  
1130'

[239.9]

B.S. 242  
D. 6'38"  
7-D-6'50"

[190.5]

B.S. 191  
D. 10'18"  
7-D-13'08"

[152.9]

B.S. 148  
D. 14'11"  
7-D-16'30"

[156.4]

B.S. 161  
D. 10'29"  
7-D-12'25"

[206.4]

B.S. 213  
D. 10'51"  
7-D-12'15"

[242.1]

B.S. 258  
D. 15'19"  
7-D-16'25"

[79.0]

B.S. 10  
D. 2'50"  
7-D-2'

22  
22  
22

03'

B.S. 88 [78.7]  
D 20° 06'  
7-D-24° 04'

B.S. 111 [96.0]  
D 21° 24'  
7-D-25° 49'

B.S. 78 [62.9]  
D-23° 01'  
7-D-27° 24'

B.S. 100 [81.2]  
D 26° 22'  
7-D-30° 10'

B.S. 117 [95.0]  
D 26° 22'  
7-D-29° 08'

B.S. 92 [93.0]  
D 0° 25'  
7-D-4° 02'

F.S. 102 [103.1]  
D 0° 08'  
7-D-0° 25'

F.S. 117 [117.9]  
D 2° 34'  
7-D-5° 52'

F.S. 105 [63.8]  
D 0° 58'  
7-D-9° 15'

F.S. 150 [48.5]  
D 7° 35'  
7-D-10° 04'

F.S. 135 [31.3]  
D 8° 18'  
7-D-9° 28'

F.S. 106 [66.4]  
D 4° 48'  
7-D-8° 24'

F.S. 190 [84.4]  
D 6° 30'  
7-D-8° 45'

F.S. 72 [53.0]  
D 2° 50'  
7-D-6° 42'

Woods

Woods

Woods

Woods

Woods

Woods

Bushes

Bushes

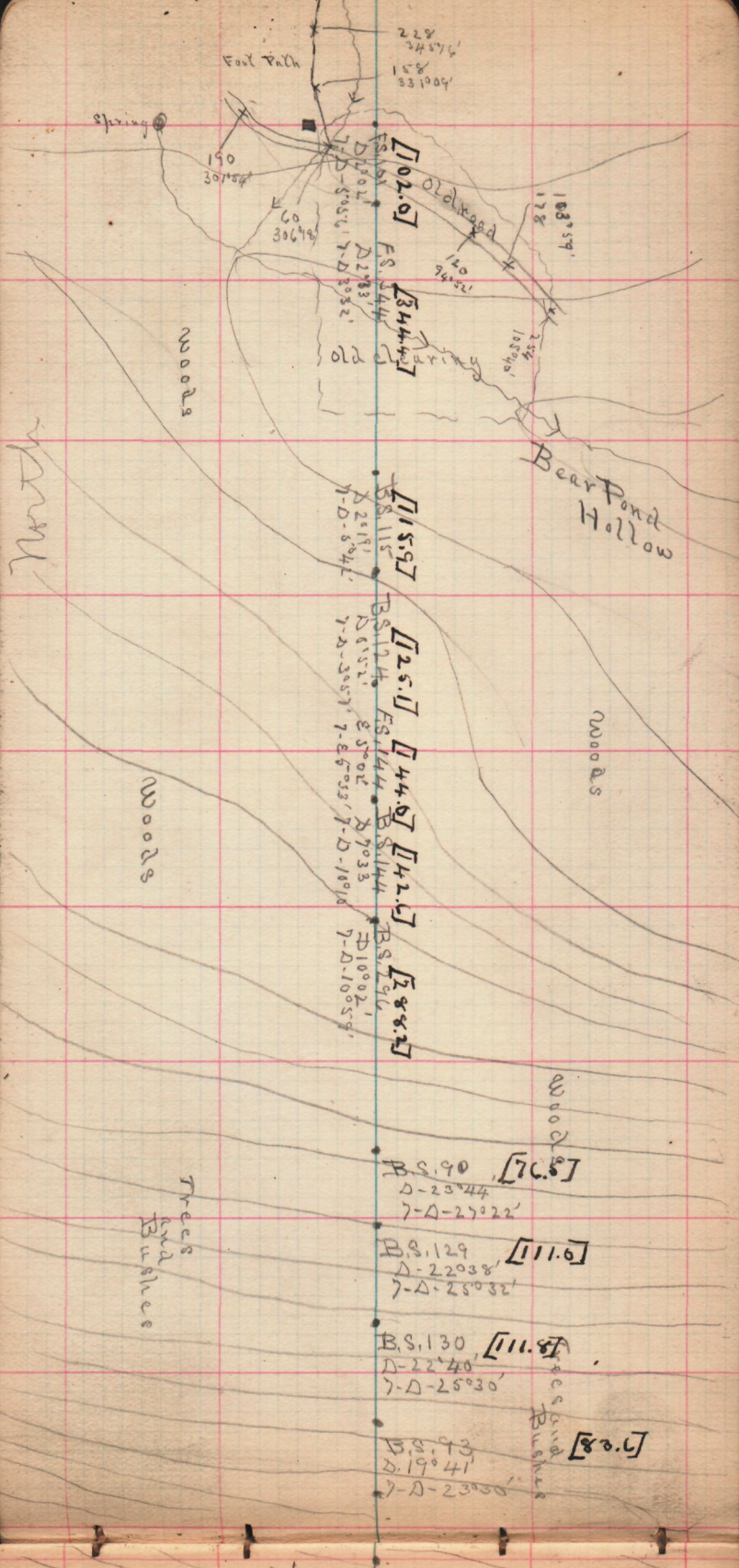
Valley Mountain

Summit

Find a Yearn -  
stone

From South Line  
Mile Post No 115  
271° 17' - 40.98 ft (slope 5° 32')  
40.57 ft Horizontal

From North Line  
15.80 ft. 93° 05'



Foot Path

Spring

228  
24576'  
158  
331004'

190  
30154'

60  
30649'

[02.0]

[344.4]

[15.97]

[25.0]

[44.0]

[42.6]

[288.2]

[70.5]

[111.6]

[111.8]

[70.1]

Bear Pond Hollow

Woods

Woods

Woods

Woods

Trees and  
Bushes

Trees and  
Bushes

North

190

60

168.59'  
178

old quarry

B.S. 115

B.S. 124

B.S. 144

B.S. 144

B.S. 196

B.S. 90

B.S. 129

B.S. 130

B.S. 93

D-25191'

D-61521'

D-85002'

D-79033'

D-100021'

D-23044'

D-22038'

D-22040'

D-19041'

7-D-8044'

7-D-30571'

7-D-65033'

7-D-10108'

7-D-10059'

7-D-27022'

7-D-25032'

7-D-25030'

7-D-23050'

F.S. 191

F.S. 144

F.S. 115

F.S. 124

F.S. 144

F.S. 144

F.S. 196

F.S. 90

F.S. 129

F.S. 130

F.S. 93

D-19021'

D-50504'

D-25191'

D-61521'

D-85002'

D-79033'

D-100021'

D-23044'

D-22038'

D-22040'

D-19041'

7-D-50504'

7-D-8044'

7-D-8044'

7-D-30571'

7-D-65033'

7-D-10108'

7-D-10059'

7-D-27022'

7-D-25032'

7-D-25030'

7-D-23050'

F.S. 191

F.S. 144

F.S. 115

F.S. 124

F.S. 144

F.S. 144

F.S. 196

F.S. 90

F.S. 129

F.S. 130

F.S. 93

D-19021'

D-50504'

D-25191'

D-61521'

D-85002'

D-79033'

D-100021'

D-23044'

D-22038'

D-22040'

D-19041'

7-D-50504'

7-D-8044'

7-D-8044'

7-D-30571'

7-D-65033'

7-D-10108'

7-D-10059'

7-D-27022'

7-D-25032'

7-D-25030'

7-D-23050'

F.S. 191

F.S. 144

F.S. 115

F.S. 124

F.S. 144

F.S. 144

F.S. 196

F.S. 90

F.S. 129

F.S. 130

F.S. 93

D-19021'

D-50504'

D-25191'

D-61521'

D-85002'

D-79033'

D-100021'

D-23044'

D-22038'

D-22040'

D-19041'

7-D-50504'

7-D-8044'

7-D-8044'

7-D-30571'

7-D-65033'

7-D-10108'

7-D-10059'

7-D-27022'

7-D-25032'

7-D-25030'

7-D-23050'

F.S. 191

F.S. 144

F.S. 115

F.S. 124

F.S. 144

F.S. 144

F.S. 196

F.S. 90

F.S. 129

F.S. 130

F.S. 93

D-19021'

D-50504'

D-25191'

D-61521'

D-85002'

D-79033'

D-100021'

D-23044'

D-22038'

D-22040'

D-19041'

7-D-50504'

7-D-8044'

7-D-8044'

7-D-30571'

7-D-65033'

7-D-10108'

7-D-10059'

7-D-27022'

7-D-25032'

7-D-25030'

7-D-23050'

F.S. 191

F.S. 144

F.S. 115

F.S. 124

F.S. 144

F.S. 144

F.S. 196

F.S. 90

F.S. 129

F.S. 130

F.S. 93

D-19021'

D-50504'

D-25191'

D-61521'

D-85002'

D-79033'

D-100021'

D-23044'

D-22038'

D-22040'

D-19041'

7-D-50504'

7-D-8044'

7-D-8044'

7-D-30571'

7-D-65033'

7-D-10108'

7-D-10059'

7-D-27022'

7-D-25032'

7-D-25030'

7-D-23050'

F.S. 191

F.S. 144

F.S. 115

F.S. 124

F.S. 144

F.S. 144

F.S. 196

F.S. 90

F.S. 129

F.S. 130

F.S. 93

D-19021'

D-50504'

D-25191'

D-61521'

D-85002'

D-79033'

D-100021'

D-23044'

D-22038'

D-22040'

D-19041'

7-D-50504'

7-D-8044'

7-D-8044'

7-D-30571'

7-D-65033'

7-D-10108'

7-D-10059'

7-D-27022'

7-D-25032'

7-D-25030'

7-D-23050'

F.S. 191

F.S. 144

F.S. 115

F.S. 124

F.S. 144

F.S. 144

F.S. 196

F.S. 90

F.S. 129

F.S. 130

F.S. 93

D-19021'

D-50504'

D-25191'

D-61521'

D-85002'

D-79033'

D-100021'

D-23044'

D-22038'

D-22040'

D-19041'

7-D-50504'

7-D-8044'

7-D-8044'

7-D-30571'

7-D-65033'

7-D-10108'

7-D-10059'

7-D-27022'

113°26' to South  
Station

Summit of  
Two Top Mountain

Trees  
around  
Station

103.7568

B.S. 119  
Δ = 16°16'  
7-D-19°27'

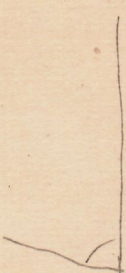
[110.8]

293°23' to north Sta

Stone mound  
28.70 ft. 133°20' - from north  
Station

Line to Pearl & Stone Mountain

Trees  
around  
Station



293°3'30''