

153-107

Treasury Department,
U. S. COAST AND GEODETIC SURVEY,

O. H. Tittmann, Superintendent.

55825

States: Pa. - Md.

SKETCHBOOK.

ABSTRACT OF CONTENTS:

*Mason and Dixon Line
westward from Middleburg,
(State line P.O.), Franklin Co. Pa.
near M.P. 103, to a point a little
west of M.P. 107*

1903

CHIEF OF PARTY:

W. C. Hodgkins

Vols.

Vol. 11

U. S. C. & G. SURVEY.
LIBRARY AND ARCHIVES.
AUG 17 1903
Acc. No. 55825

Treasury Department,
U. S. COAST AND GEODETIC SURVEY,

....., Superintendent.

State:

SKETCHBOOK.

ABSTRACT OF CONTENTS:

.....
.....
.....
.....
.....
.....

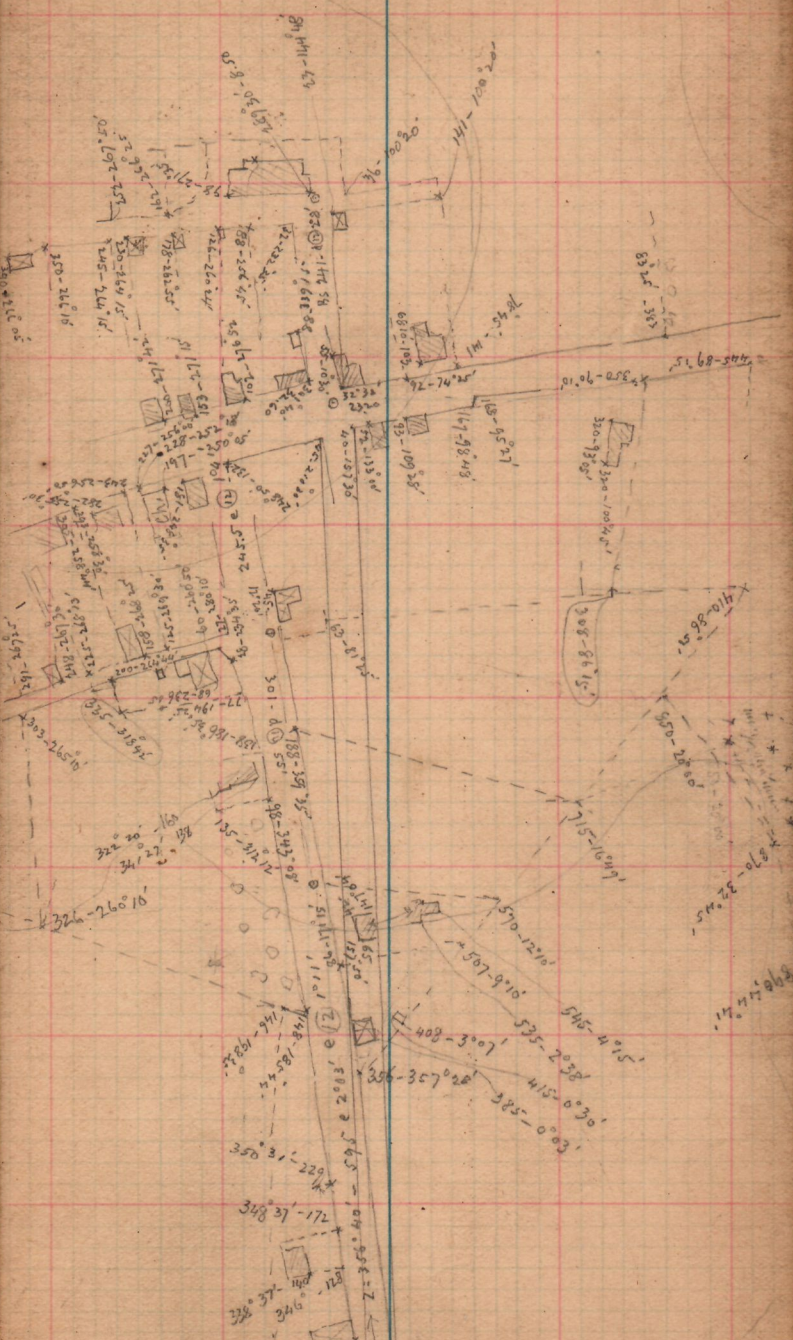
190

CHIEF OF PARTY:

..... Vols.

Vol.

EAST



Initial point of transit line to W'd

[289.9]

350-260 18'
 350-260 15'
 320-100 1/2'
 308-86 1/2'
 322-260 10'
 350-260 18'
 350-260 15'
 320-100 1/2'
 308-86 1/2'
 322-260 10'
 350-260 18'
 350-260 15'
 320-100 1/2'
 308-86 1/2'
 322-260 10'
 350-260 18'
 350-260 15'
 320-100 1/2'
 308-86 1/2'

Stake 23.00 ft S. of Sta. on transverse line
 MP 103 (in present site)
 94°42' - 18.00 ft.

a = 14.50 / 320°40'
 b = 79.00 - 279°50'
 c = 32.80 - 213°50'
 k = 36.00 - 195°00'

[224.3] - 4.4
 [605.5] - 3.3.5
 [386.4] - 3.8
 [376.9] - 2.6
 [228.9] + 0.3 FROM

FS 605
 BS 385
 FS 375
 BS 227.5

L 4.132 - 6116 * 18.83 81' 117-231°47'

X 420 - 215°10'

X 291 - 233°57'

X 196 - 200°15'

X 264 - 181°55'

X 286 - 214'

X 21.832 - 353'

X 420 - 224°50'

X 355 - 211°23'

X 80.00 - 213°11'

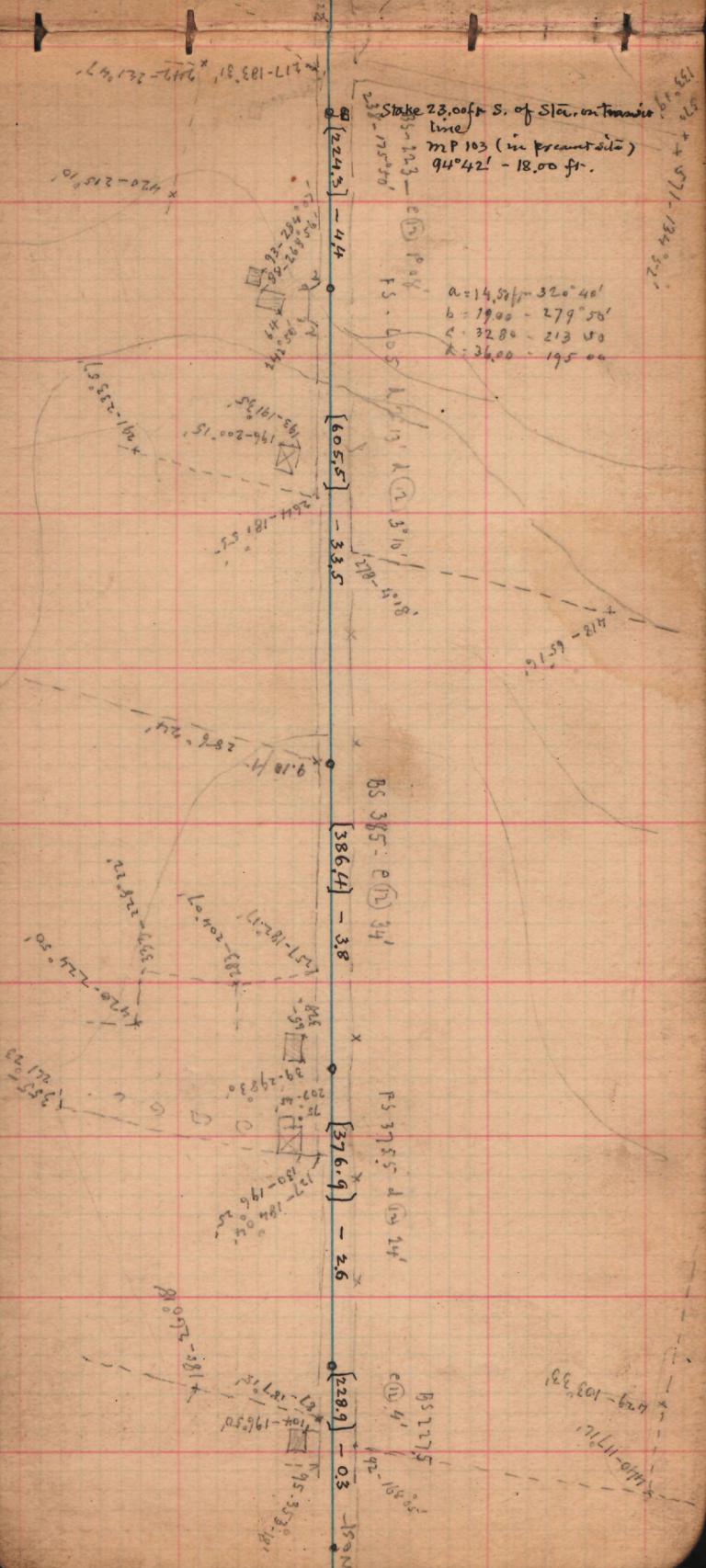
X 104 - 196°50'

X 195 - 333°18'

133°49' + 571 - 134°52'

X 629 - 103°33'

X 440 - 171°17'



FS 721 1/4 d (12) 10'
122.4 - 2.1

234-183°12'

203-355°50'

BS 340 - e (12) 102'

341.3 - 6.2

57°50'

FS 390 - e (10) 18'

391.4 + 2.0

97-173°45'

295-176°38'
285-177°35'
271-178°20'

BS 515 e (10) 34'
576.3 - 5.4

51-110°55' 3227 ft
78-80°55' 3227 ft
301

direction of survey line

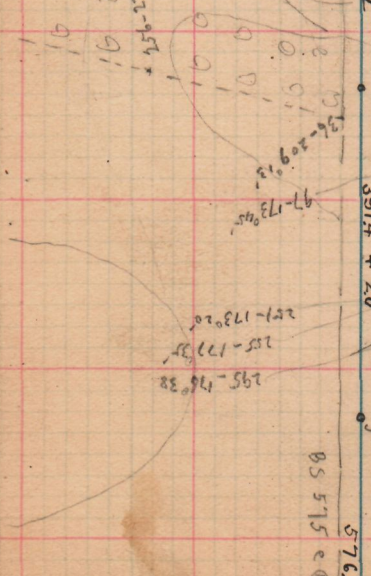
578-96°20'

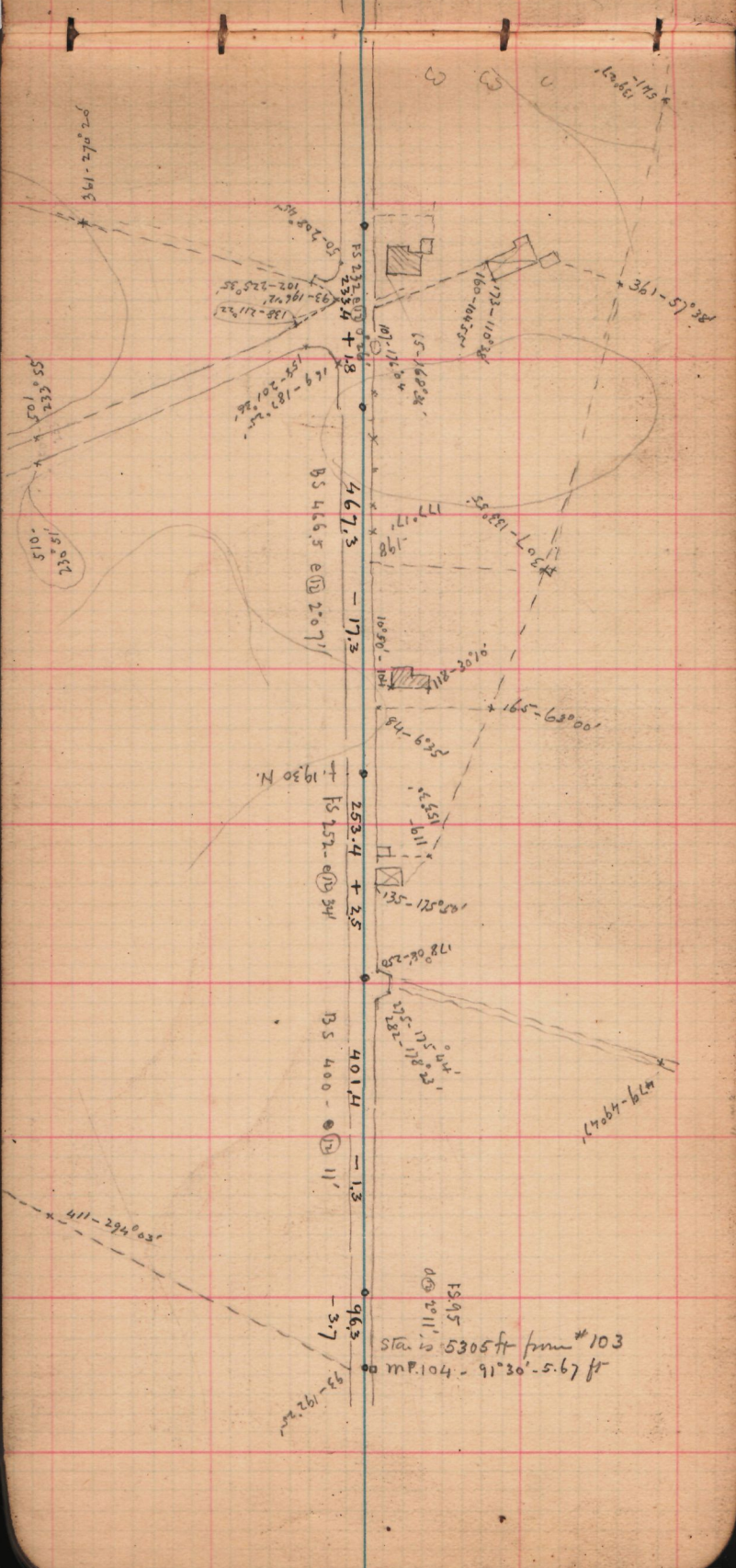
490-130°15'

145-51°52-95°4'

101-199°32'

101-199°32'





701 d W 00

BS 487.5 @ 12 49'
[487.4] - 15.2

FS - (81 - d 10) 1021'

[682] - 16.1

BS 501.5 @ 15'
502.9 - 2.2

[719] [303] - 1.8



31.98 34.85 30.9

361-96°00'
348-92°44'
327-100°49'

5 T. back
d 13 1°55'
BS 285
30337

FS 521
[521.8] - 17.6
d 13 1°55'

BS 252
[252.7] + 13.2
d 13 5°00'

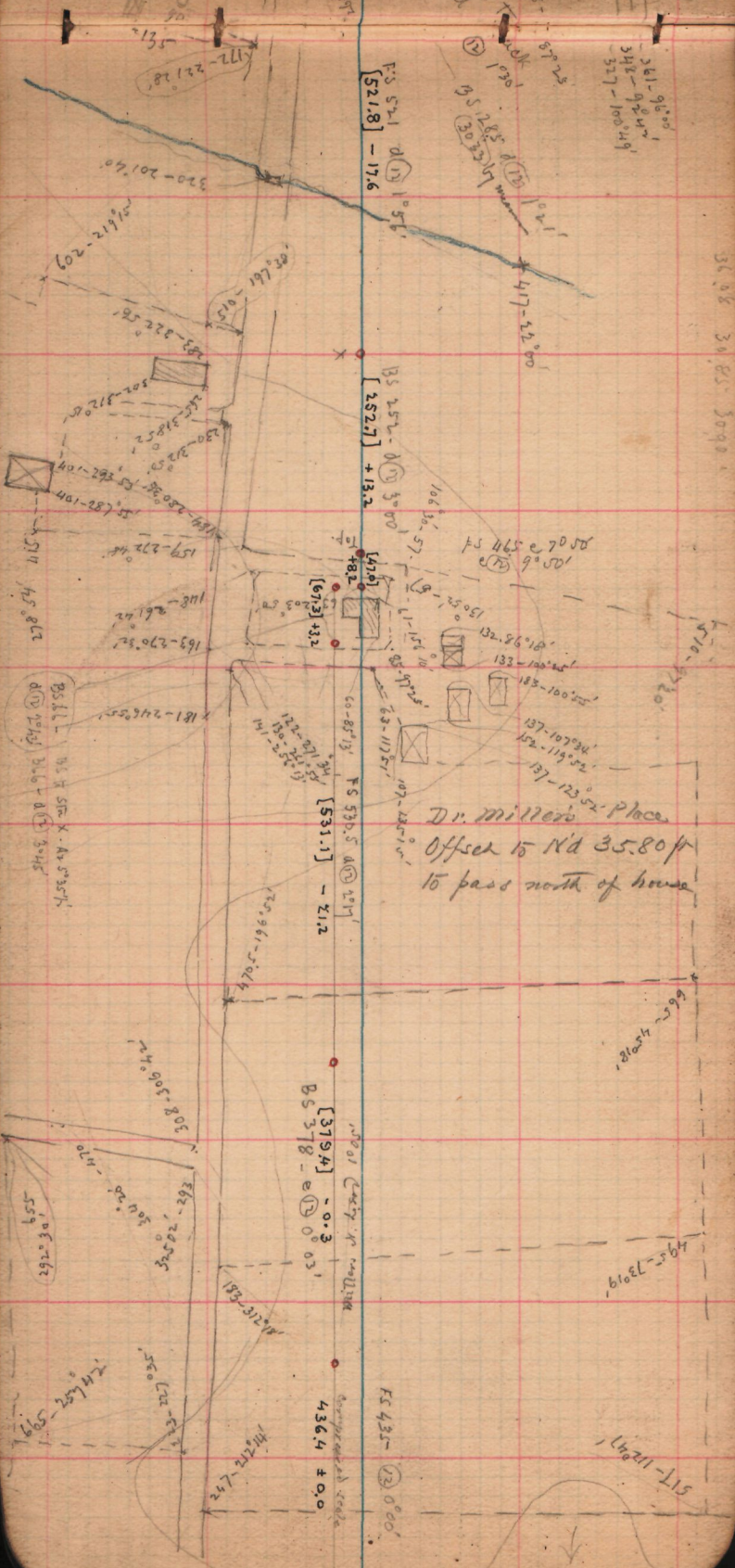
[47.9]
+ 8.2

FS 530.5
[531.1] - 21.2
d 13 1°19'

BS 378
[379.4] - 0.3
e 13 0°05'

FS 435
[436.4] ± 0.0
d 13 0°00'

Dr. Miller's Place
Offset to Rd 35.80 ft
to pass north of house



BS 86
US H SFT. X. An 357
d 13 1°55'

308-506°04'
302-
292-30°-62'
292-559

4452-599
350-
350-
350-
350-

4364 ± 0.0
4364 ± 0.0

521-342.80'

[722.7]

BS 721.5 @ 12 0° 54'

-11.4

362-339.50'

* 41.5° - 39.002

FS 518 @ 10 56'

BS 570 @ 11 10.00'
571.2 + 10.0



26 521-203 0° 32'

308-182.37'

316-201.43'

30° 30' - 145

15.181-861

1577-1575.5'

180° 05' 293

182° 08'

360° - 131° 08'

95° 51' - 81° 30'

22.40'

226.15'

212-74.40'

155° 58'

207-84.20'

20.51e-114 x

21° 41'

209.83'

21° 41'

21° 41'

[400.0] -12.9

FS 399 - A @ 10° 51'

to MP 105-9.76 ft
368° 03'
Rout off pce - 5.35.80
S 116.652 near of Station

Temp 105
at 28.18
90° 54'

154.96-944 x

175-88.30'

142.88'

175-88.30'

110-100.09'

93.88'

1102.88

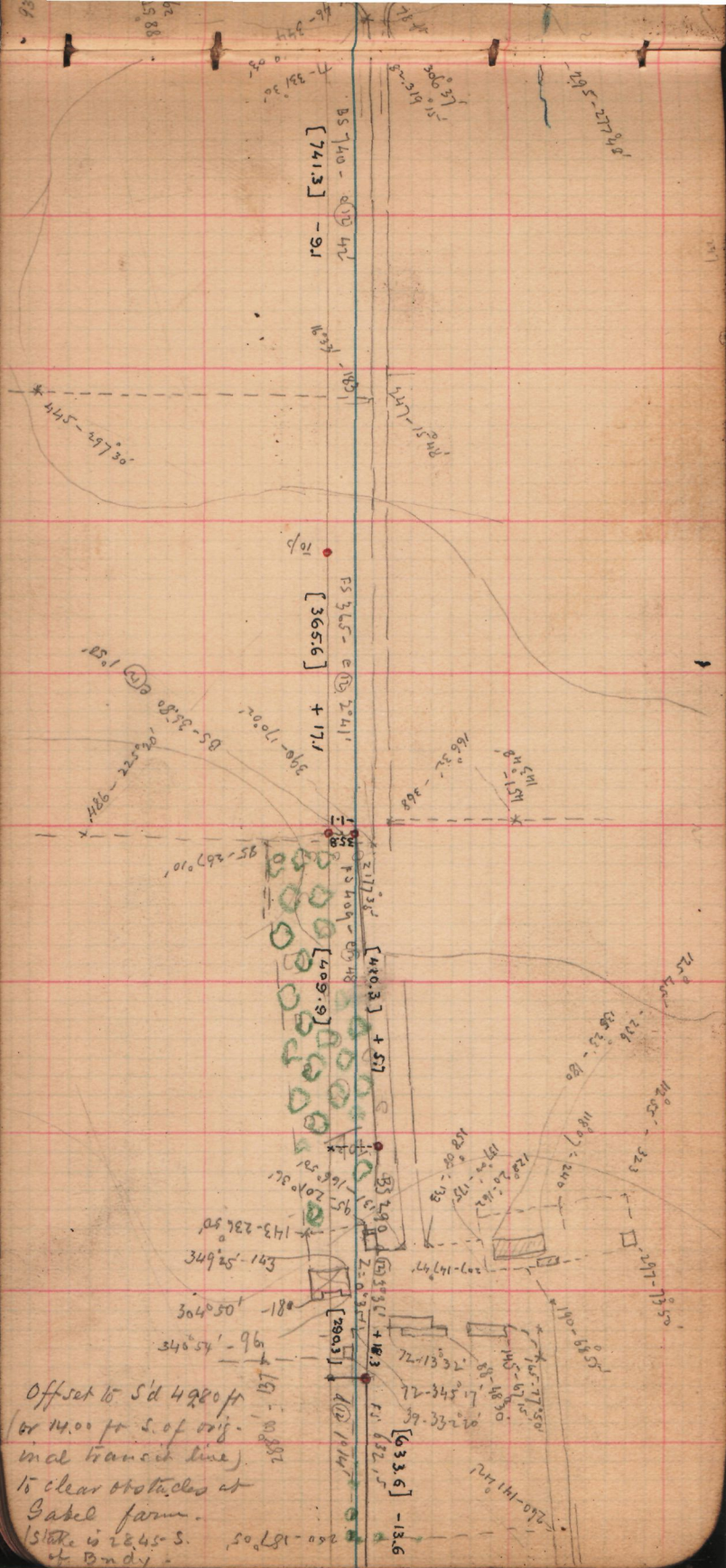
350.4
93° 08'

173.31

173.31

173.31

173.31



BS 740 - 210 42
 [741.3] - 9.1

FS 365 - 2041
 [365.6] + 17.1

FS 409 - 2173
 [409.9] + 5.7

BS 290
 [290.3] + 18.3

FS 633.6 - 13.6

Offset to S'd 4280 ft
 or 14.00 ft S. of orig.
 inal transit line)
 to clear obstacles at
 Gabel farm.
 Stake is 2845 S.
 of Bondy.

Handwritten annotations on the map include bearings and distances such as:
 - 20.5-277.8
 - 106.32 - 368
 - 125.65
 - 128.20 - 162
 - 137.4 - 175
 - 147.02 - 93
 - 148.07 - 246
 - 149.05 - 323
 - 150.68 - 55
 - 150.69 - 195
 - 150.69 - 180
 - 150.69 - 206
 - 150.69 - 226
 - 150.69 - 246
 - 150.69 - 266
 - 150.69 - 286
 - 150.69 - 306
 - 150.69 - 326
 - 150.69 - 346
 - 150.69 - 366
 - 150.69 - 386
 - 150.69 - 406
 - 150.69 - 426
 - 150.69 - 446
 - 150.69 - 466
 - 150.69 - 486
 - 150.69 - 506
 - 150.69 - 526
 - 150.69 - 546
 - 150.69 - 566
 - 150.69 - 586
 - 150.69 - 606
 - 150.69 - 626
 - 150.69 - 646
 - 150.69 - 666
 - 150.69 - 686
 - 150.69 - 706
 - 150.69 - 726
 - 150.69 - 746
 - 150.69 - 766
 - 150.69 - 786
 - 150.69 - 806
 - 150.69 - 826
 - 150.69 - 846
 - 150.69 - 866
 - 150.69 - 886
 - 150.69 - 906
 - 150.69 - 926
 - 150.69 - 946
 - 150.69 - 966
 - 150.69 - 986
 - 150.69 - 1006

6325
a (13) 10' 14"

BS 4605
a (12) 20'

[481.9]
+ 4.7

IS 603 - a (10) 10' 18"

[604.1] - 13.7

BS 457 - e (11) 153'
[457.9] - 15.1

Wire

437-289° 50'

183-61° 20"

405-243° 45'

252-139° 20"

91-92° 10'

1314-112° 50'

510-317° 10'

392-45° 06'

406-43° 30'

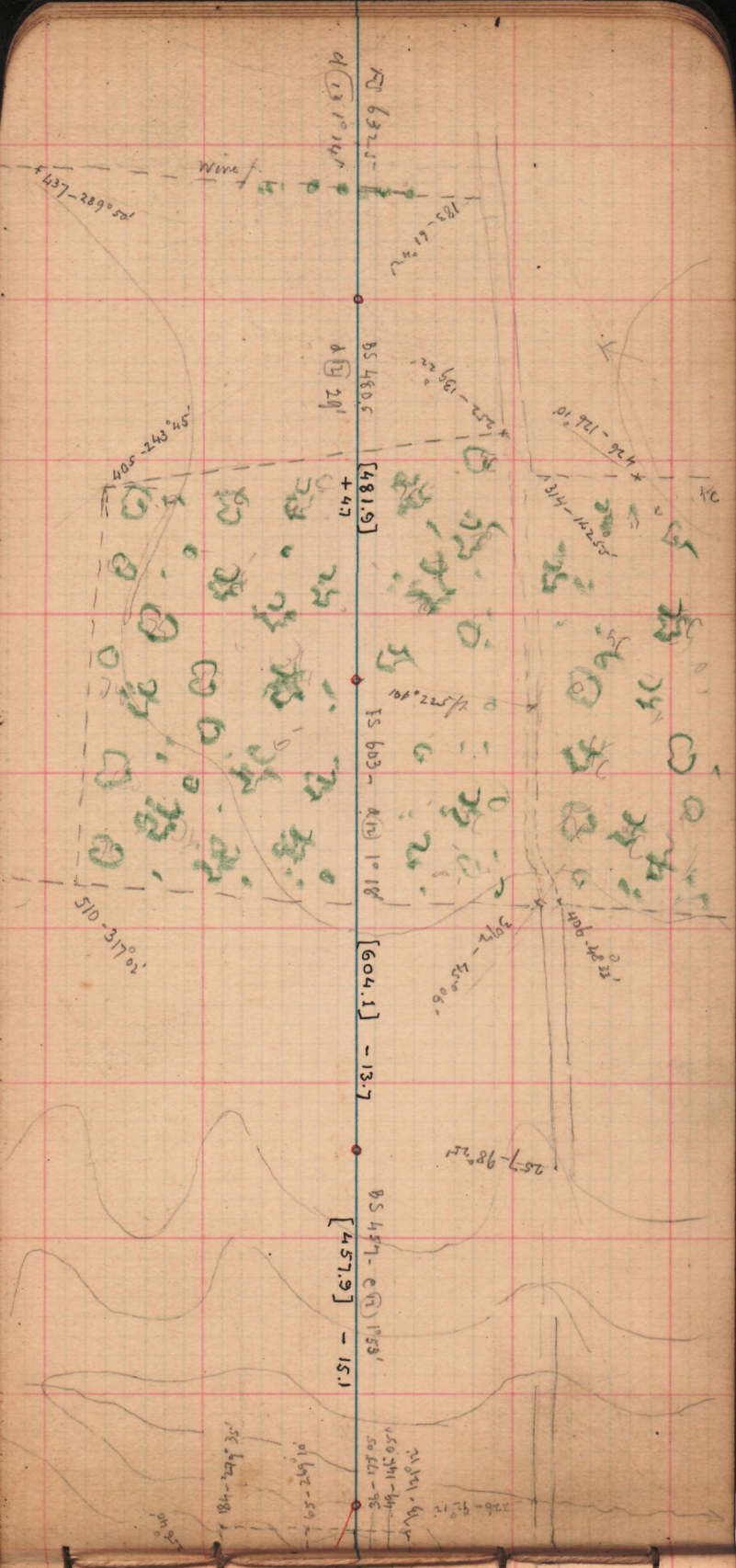
257-98° 25'

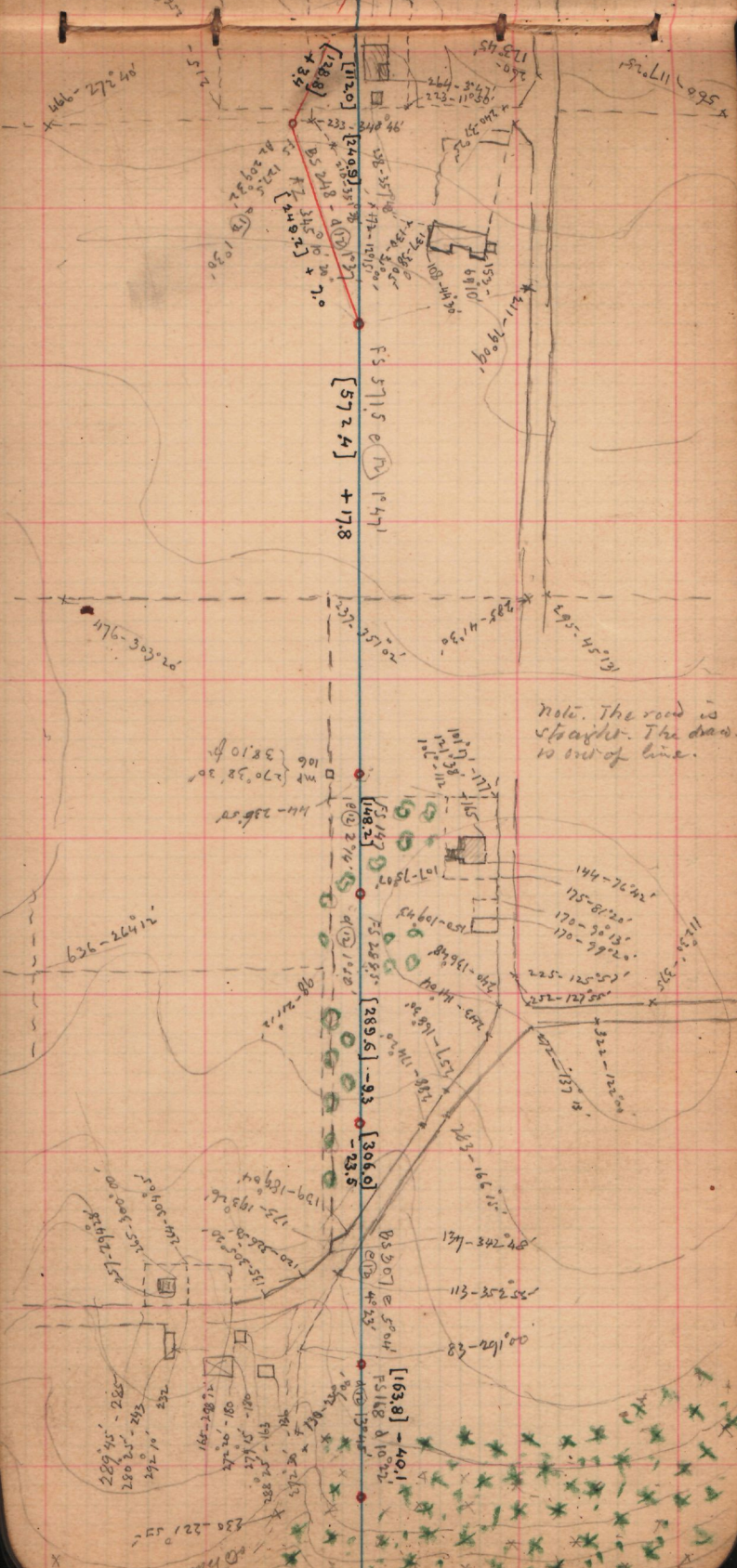
184-47° 35'

91-92-59

21 501-64
50 511-92

226-92° 12'







[496.7]

-83.3

[343.2]

+16.3

[262.9]

+16.5

[504.1]

+25.4

FS 64V

Wire fence (down)

Comochaguee Creek

Comochaguee Creek

Comochaguee Creek

Comochaguee Creek

Comochaguee Creek

Comochaguee Creek

Comochaguee Creek

260-278°32'
325-285°10'
430-245°30'
490-237°53'
640-237°35'
345-255°25'
260-127°40'30"
285-220°17'
89-103°8'42"
238-305°50'
460-240°10'
510-299°52'
620-36°10'
685-410°44'
700-47°00'
700-62°35'
910-92°30'
410-116°05'
93-112°16'
85°34'11" N
40°43'1" E
262.5
503.6
85°50'4" N
1°53'1" E
430-245°30'
425-310°57'
516-53°38'
430-109°57'

385-12°10'
506.5 d. 0°39'
700-47°00'
700-62°35'
910-92°30'
410-116°05'
93-112°16'
85°34'11" N
40°43'1" E
262.5
503.6
85°50'4" N
1°53'1" E
430-245°30'
425-310°57'
516-53°38'
430-109°57'

12.11

20-5, 1903

460-121.11'

8551-149'

23°10' 20'23'

[641.5]
+ 26.7

85 515-

2°0'16' 1914'
[516.4]
+ 11.1

1914'

288-39.23'

4167-84.40'

490-264°14'

FS 384-
[385.2]
+ 16.8

2°30'

100 333'
[152.9]
+ 0.9

FS 1515-
11'

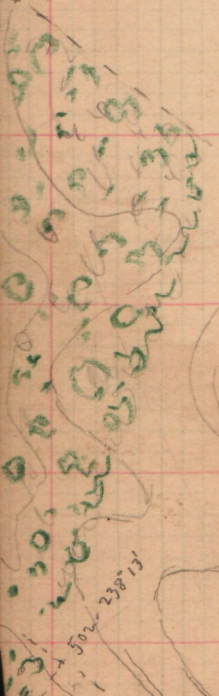
87-224.10'

1336-
[12.40]
+ 4.7

337.3

138-95°50'

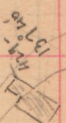
247-195°05'



222-726'

284-134.44'

314-148.25'



215-9345'

155-108.44'

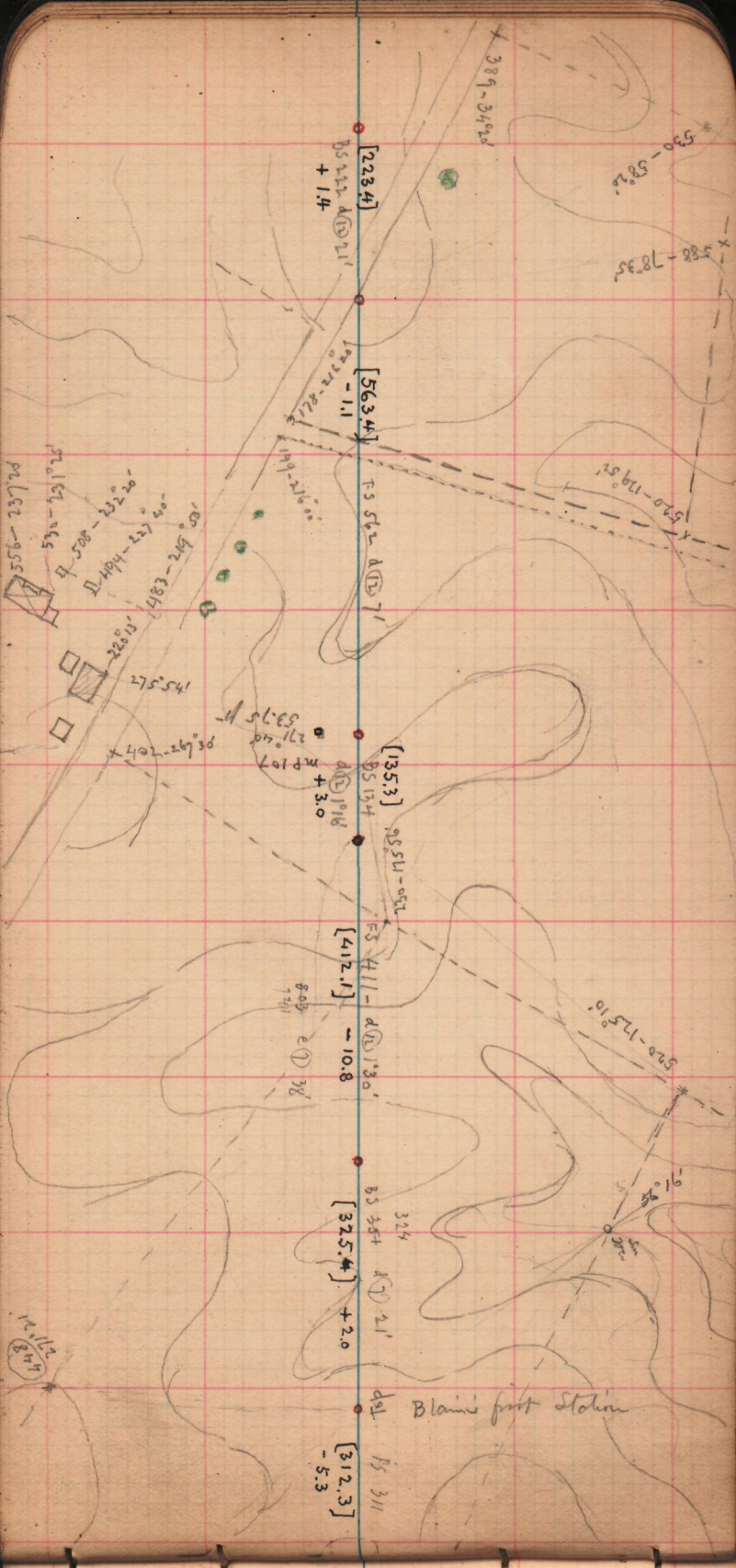
150.2'

175'

104-258'

104-258'

104-258'



23950
1725

Handwritten notes in green ink, including the number 1725 circled, and some illegible scribbles.

AD 580

Handwritten notes in green ink, including the number AD 580, and some illegible scribbles.

76 26 K
 302 35 15
 -311 42 40
 213 51 50
 102 08 10
 89 58

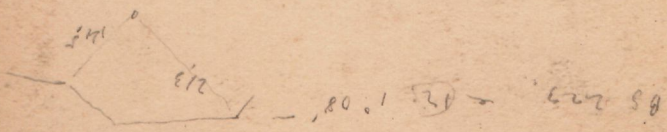
42 25

3608
 2225
 1383

3088
 3088

+16.151

252 04 B. 100



16 H 94 42 103
 29 I

110 59 92
 356 40
 180 20
 110 59 92