



THE HUGHES CO.
BALTIMORE

Taken from E. side Long Bridge, looking southeast
Time 3.35 P.M. April 30th 1916

In the Circuit Court for Anne Arundel County

In Equity
4071

Mayor & City Council of Baltimore

vs
John P. Bruce & Harry M. Wagner

Respondents Exhibits 12-L.

Filed 13 June 1915

Respondent's Exhibit 3
Re - filed 28 Apr. 1955



THE HUGHES
BALTIMORE

In the vicinity of court for some specimens bearing.

In Spirit 4171

Maya stictis cornice of Baltimore

or.

John R. Brumba & Harry M. Wagner

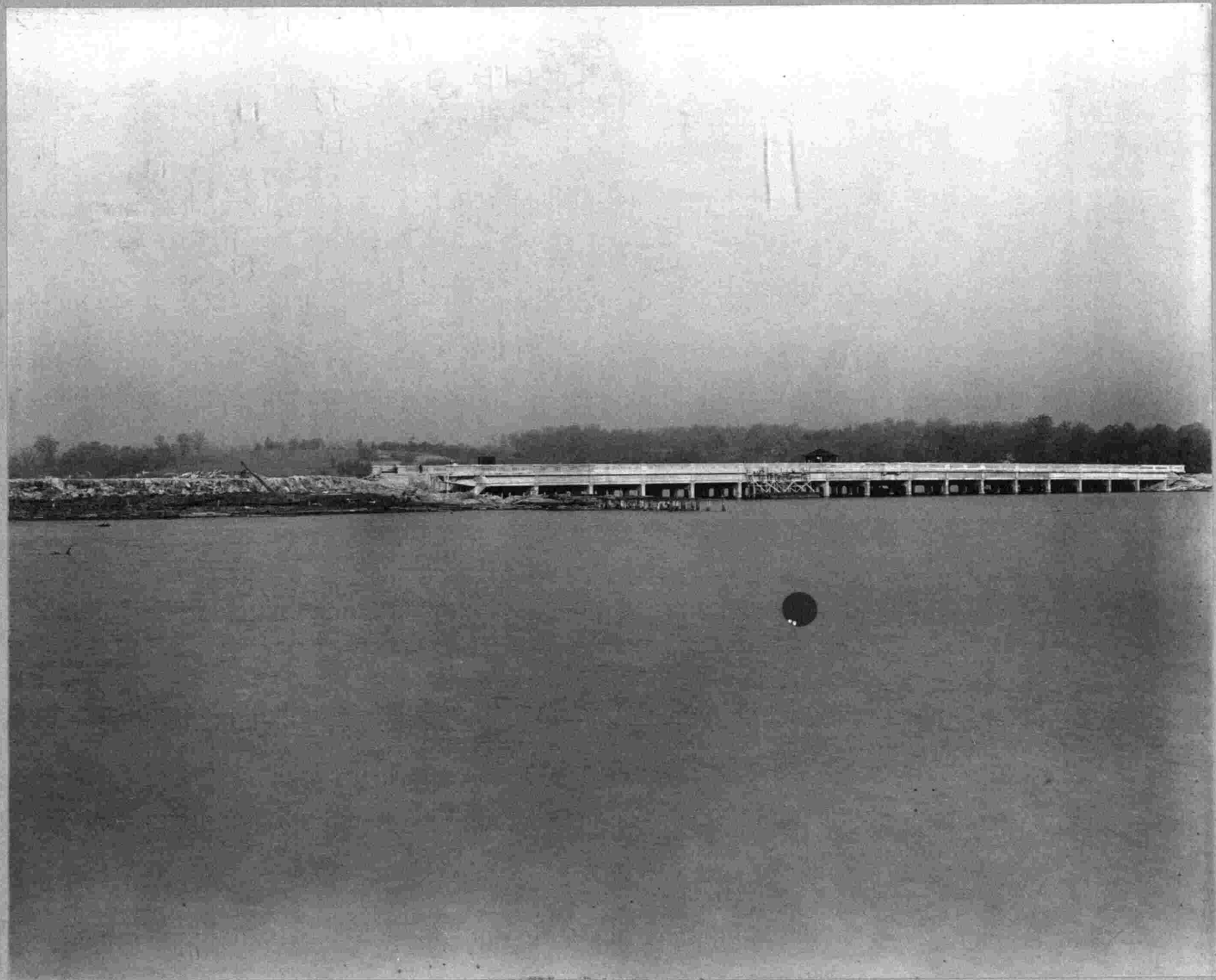
Rockersaults: St. Louis H. 15

April 13 June 1916

No 15. June 3-1916 Taken at N. end of embankment looking southwest. Time about 11.15 a.m.

Referenda's Exhibit 3.

Re-Rick & Co. 1933



THE HUGHES CO.
BALTIMORE

No 2. May 3rd 1916 Taken between 1st & 2nd turnouts on Light Street Bridge,
looking toward new bridge constructed at N. end of
Red Bird Island. June 7. 17 A. M.

In the Circuit Court for Anne Arundel County

In Equity 4071

Mayor & City Council of Baltimore

vs.

John P. Brown

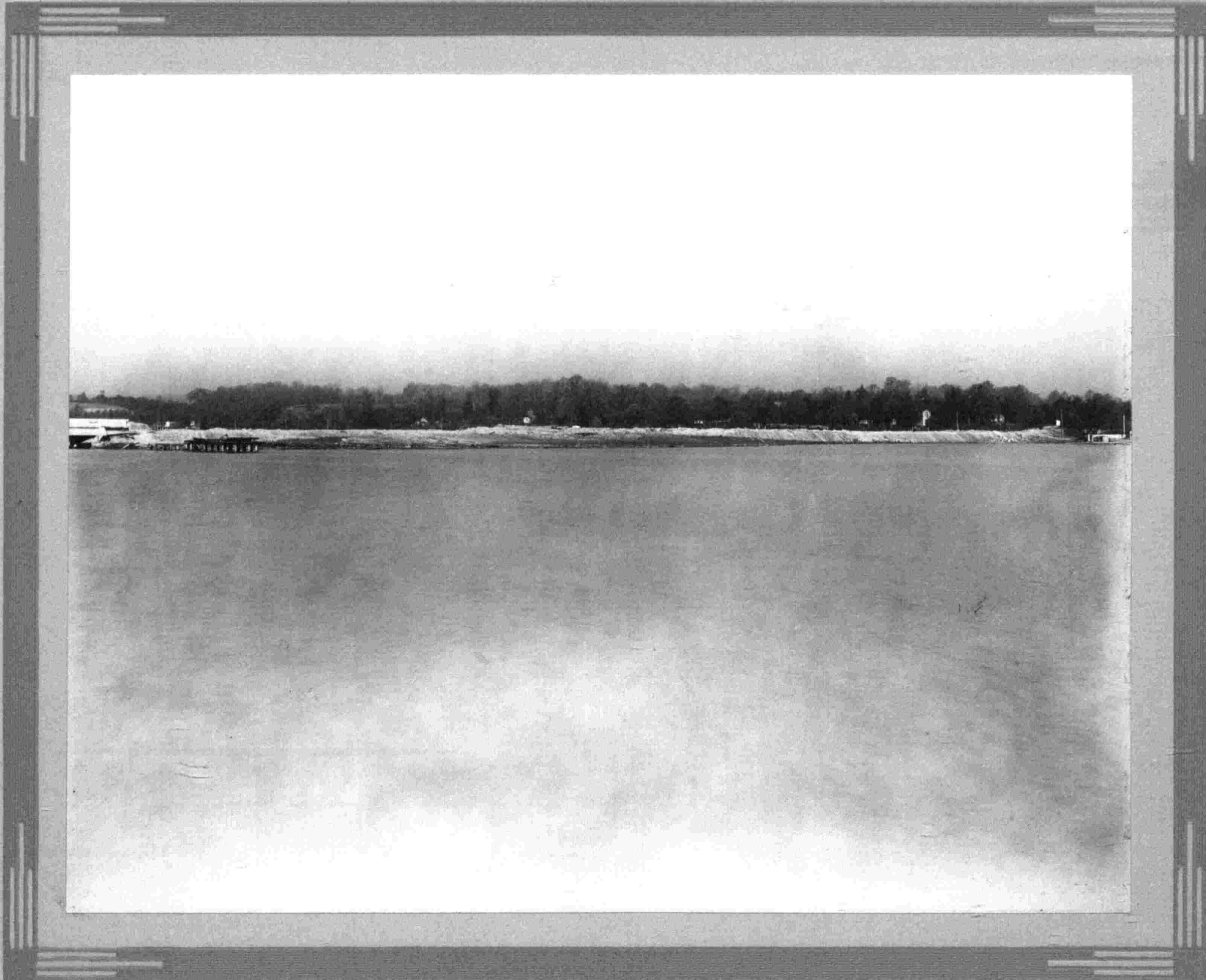
vs.

Harry M. Wagner

Respondents Exhibit 2 H.

Filed 18th June 1916

Respondent's Exhibit 3
Re - filed 28 Apr. 1955



THE HUGHES CO.
BALTIMORE

In the Circuit Court for Anne Arundel County.

In Equity 4071

Mayor & City Council of Baltimore

vs

John P. Bruce

&

Harry M. Wagner

Respondents Exhibit 3 H.

Filed 13 June 1914

Defendants Exhibit 3.

Re-filed 28 Apr, 1955.

No. 3. May 30 1916 Taken from Light Street Bridge, showing
substructure approaching new bridge from
Baltimore Court side. Time 7.33 A.M.



THE HUGHES CO.
BALTIMORE

In the Circuit Court for Anne Arundel County.

In Equity 4071

Mayor & City Council of Baltimore

v.

John P. Bruns

&

Harry M. Wagner

Respondents Exhibit 10. H.

Filed 13 June 1914

Defendant's Exhibit 3
Re-filed 2^d Apr. 1955

No. 10. May 3rd 1916 Taken at N. end of Annapolis looking toward
New Bridge



THE HUGHES CO.
BALTIMORE

In The Circuit Court for Anne Arundel County.

In Equity 4071

Mayor & City Council of Baltimore

vs.

John P. Bruns

+

Harry M. Wagner

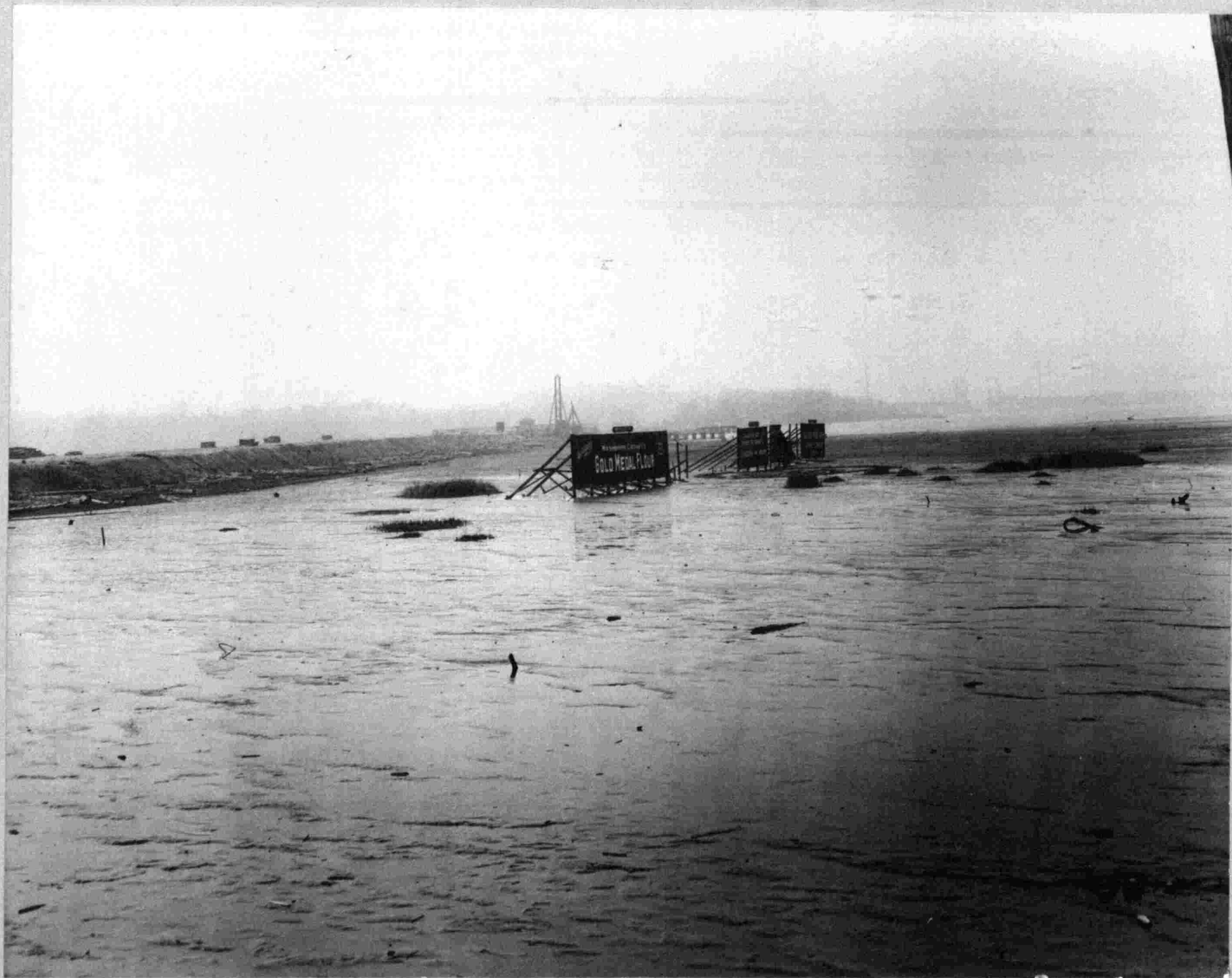
Respondents Exhibit 7. H

File 13 June 1914

Defendants' Exhibit 3

Re-filed 28 Apr., 1955.

107. May 3rd 1916 Taken about midway of east-southwest looking
along e side of same. June 8 A. M.



THE HUGHES CO.
BALTIMORE

In the Circuit Court for Anne Arundel County.

In Equity 4071

Mayor & City Council of Baltimore

vs.

John P. Bruns & Harry M. Wagner

Respondents Exhibit 2-L

L

Filed 13 June 1914

Defendant's Exhibit 3
Re-filed 28 Apr. 1955

Ar. & April 20, 1916. Taken further north on Long Bridge (between 150 & 200 yards from south end)
Looking N.W. Time 3:05 P.M.



THE HUGHES CO.
BALTIMORE

In the Circuit Court for Anne Arundel County

In Equity. 4071

Mayor & City Council of Baltimore

vs

John P. Bruns & Harry M. Wagner

Respondents Exhibit 3-L.

Filed 13 June 1916

2

Plaintiffs' Exhibit 3

Re-filed 28 Apr., 1955

Taken from 1st tower on Long Bridge about 250 from end of Bridge,
looking N.W. toward submerged and bridge at north end of embankment.
Time 3:17 P.M. April 20th, 1916



THE HUGHES CO.
BALTIMORE

In the Circuit Court for Anne Arundel County

In Equity 4071

Mayor & City Council of Baltimore

vs

John P. Bruns & Harry M. Wagner.

Respondents Exhibit 9-L.

Filed 13 June 1916

Defendant's Exhibit 3
Re-filed 28 Apr. 1955

Taken at south end of small bridge at south end of embankment
looking north on embankment. Time 3.58 P.M. April 20th 1916.



THE HUGHES ^{Co.}
BALTIMORE

In the Circuit Court for Anne Arundel County

In Equity 4071

Mayor City Council of Baltimore

vs.

John P. Bruns

+

Harry M. Wagner

Respondents' Exhibit 4 H.

Filed 13 June 1916

No 4. May 3rd 1916. Taken from right street bridge between 1st and 2nd turnouts,
looking N. W. toward main span of new bridge over
main channel. Time 7.38 A. M.

Defendants' Exhibit 3.

Re-filed 28 Apr., 1953.



THE HUGHES CO.
BALTIMORE

In the Circuit Court for Anne Arundel County

In Equity. 4071

Mayor & City Council of Baltimore

v

John P. Bruns

+
Harry M. Wagner.

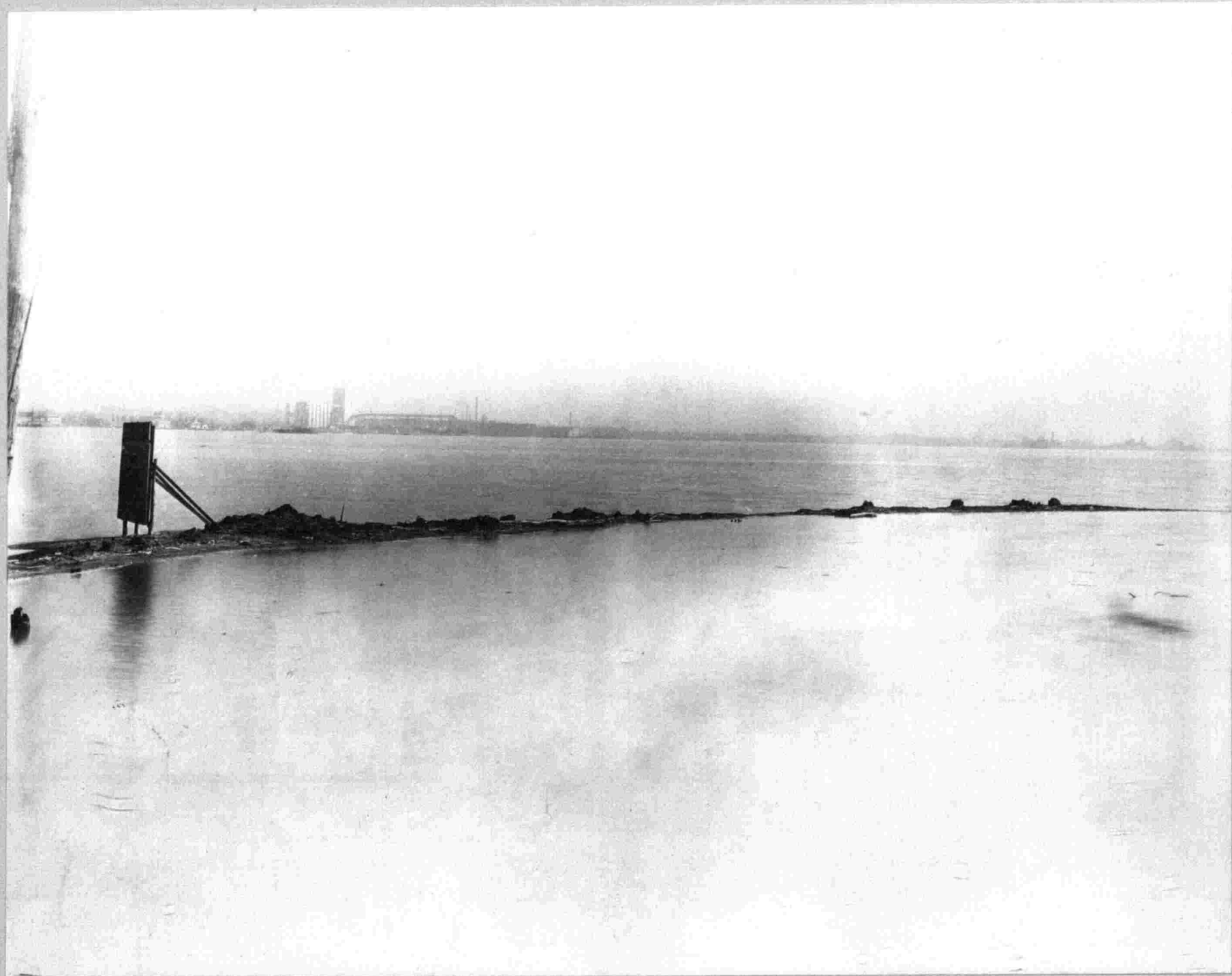
Respondents' Exhibit 5 H.

Filed 13th June 1916

No. 5. May 3rd 1916. Taken from E. side of Long Bridge looking north. June 7. 1889. M.

Defendants' Exhibit 3.

Re-filed 28 Apr., 1955.



THE HUGHES CO.
BALTIMORE

In the Circuit Court for Anne Arundel County.

In Equity.
4071

Mayor & City Council of Baltimore

vs.

John P. Bruns

+

Harry M. Wagner

Respondents' Exhibit 6 H.

Filed 13 Jun 1916

Respondents' Exhibit 3.

Re-filed 28 Apr, 1955.

No. 6. May 3rd 1916. Taken from print just west of S. end of embankment
looking N.W. along west side of embankment.
June 7. 54 A.M.



THE HUGHES CO.
BALTIMORE

In the Circuit Court for Anne Arundel County

In Equity 4871

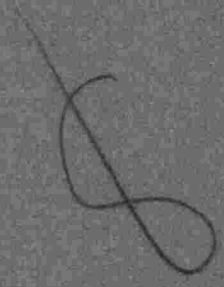
Mayor & City Council of Baltimore

vs.

John P. Bruns & Harry M. Wagner

Respondents Exhibit 13-L.

Filed 13 June 1916



Defendants Exhibit 3
Re-filed 28 Apr. 1955

Taken from Esado Long Bridge about 100 ft. from S. end
Looking north. Time 3.44 P.M. April 20, 1916



THE HUGHES CO.
BALTIMORE

In the Circuit Court for Anne Arundel County

In Equity 4171

Mayor & City Council of Baltimore

vs

John P. Bruns & Harry M. Wagner.

Respondents Exhibit 10-L.

10

Filed June 13 1916

Defendants' Exhibit 3
Re-filed 28 Apr. 1955

Taken about 75 yards farther west on mainland than Respondents
Exhibit 9 L. Looking north. Time 3:54 P.M. April 20th 1916.



THE HUGHES & CO.
BALTIMORE

In the Circuit Court for Anne Arundel County

In Equity 4071

Mayor & City Council of Baltimore

vs

John P. Brunas & Harry M. Wagner.

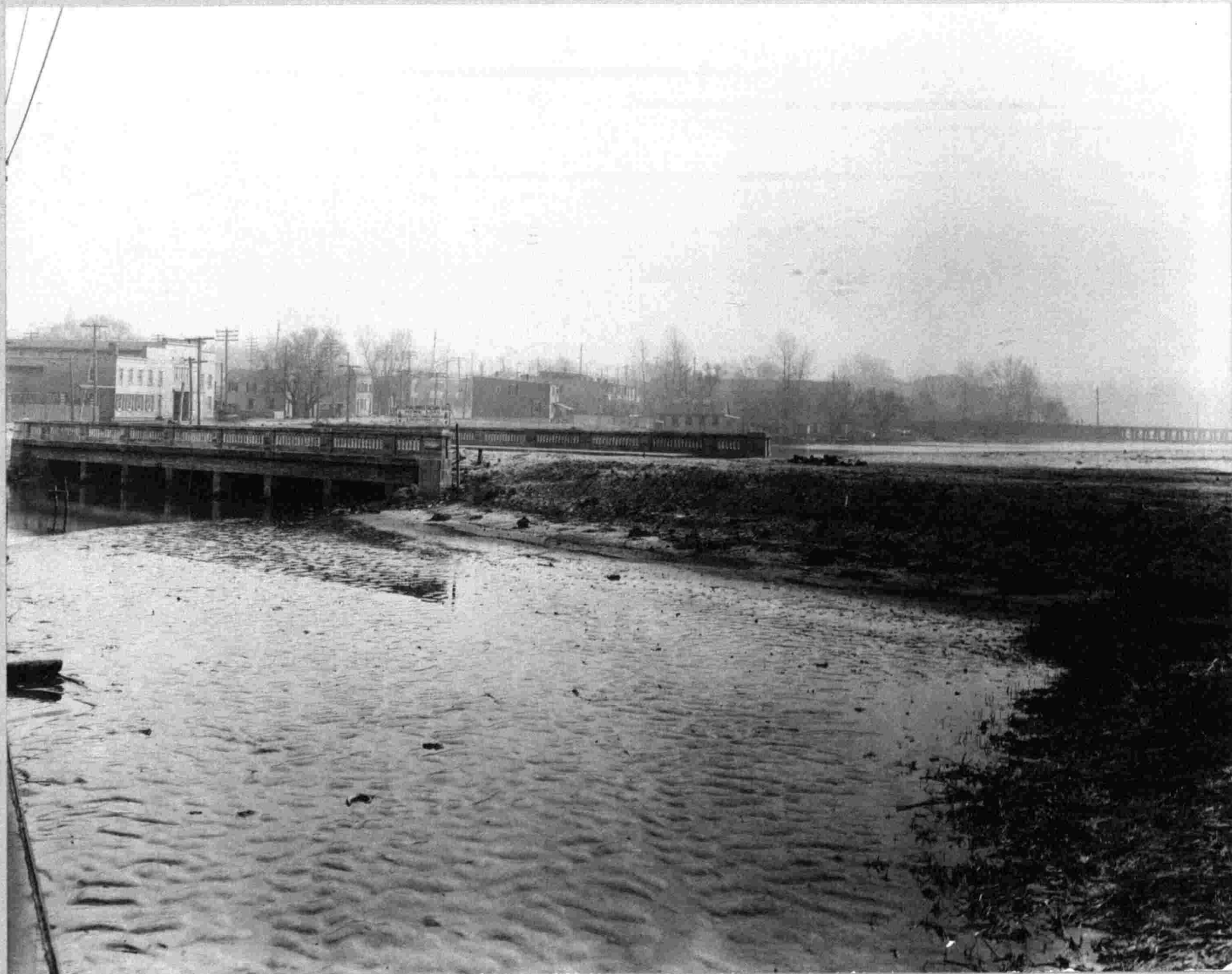
Respondents' Exhibit 8-L.

D

Filed June 13 1915

Defendants' Exhibit 3
Re-filed 28 Apr. 1955

Taken from west side Long Bridge about 100 yards from S. end
looking south. Time 3:47 P. M. April 20th 1916



THE HUGHES CO.
BALTIMORE

In the Circuit Court for Anne Arundel County

In Equity 4071

Mayor & City Council of Baltimore

vs

John P. Burns & Harry M. Wagner

Respondents' Exhibit 7-L.

+

Filed 13 June 1914

Defendants' Exhibit 3

Re-filed 27 Apr, 1955

Taken at second turnout on Long Bridge, looking south.
Time 3:25 P.M. April 20th 1916.



THE HUGHES CO.
BALTIMORE

In the Circuit Court for Anne Arundel County.

In Equity.

4071

Mayor & City Council of Baltimore

vs.

John P. Bruns & Harry M. Wagner

Respondents Exhibit C-L.

Filed June 13, 1916

Defendants' Exhibit 3

Re-filed 28 Apr. 1955

Taken from same place on embankment as Respondents Exhibit 5L
Looking east toward Long Bridge showing shore line at north end of
Island. Time 4:18 P.M. April 20th, 1916



THE HUGHES CO.
BALTIMORE

In the Circuit Court for Anne Arundel County

In Equity 4071

Mayor & City Council of Baltimore

vs

John P. Brown & Harry M. Wagner

Respondents' Exhibit I-L

14

Filed 13 June 1916

Defendants' Exhibit 3.
Re-filed 28 Apr., 1955

at April 20th 1916. Station on Long Beach opposite end of Pavilion (3rd telegraph pole)
Looking north west Time 3.05 P. M.



THE HUGHES CO.
BALTIMORE

In the Circuit Court for Anne Arundel County

In Equity 4071

Mayor & City Council of Baltimore

vs

John P. Bruns & Harry M. Wagner

Respondents Exhibit 5-L

Filed 13 June 1916

Plaintiffs' Exhibit 3

Re-filed 28 Apr, 1955

Taken from north end of embankment looking s.e. toward S. end
of Long Bridge. June 4th P.M. April 20th 1916



THE HUGHES CO.
BALTIMORE

In the Circuit Court for Anne Arundel County.

In Equity, 4071

Mayor & City Council of Baltimore

v

John P. Burns & Harry M. Wagner

Respondents' Exhibit H-L.

Filed 13 June 1916

9

Plaintiffs' Exhibit 3

Re-filed 28 Apr., 1956

Taken on embankment about 75 yards from N. end of Macee Bridge,
looking north, June 4.03 P.M. April 20th 1916.



THE HUGHES CO.
BALTIMORE

In the Circuit Court for Anne Arundel County

In Equity 4071

Mayor & City Council of Baltimore

v

John P. Bruner & Harry M. Wagner

Respondents Exhibit 11-L
X

Filed 13 June 1916

Defendants' Exhibit 3

Re-filed 28 Apr. 1955

Taken at north end of embankment looking S.W.
Time 4:25 P.M. April 20th 1916



THE HUGHES CO.
BALTIMORE

In the Circuit Court for Anne Arundel County

In Equity 4171

Mayor & City Council of Baltimore

vs.

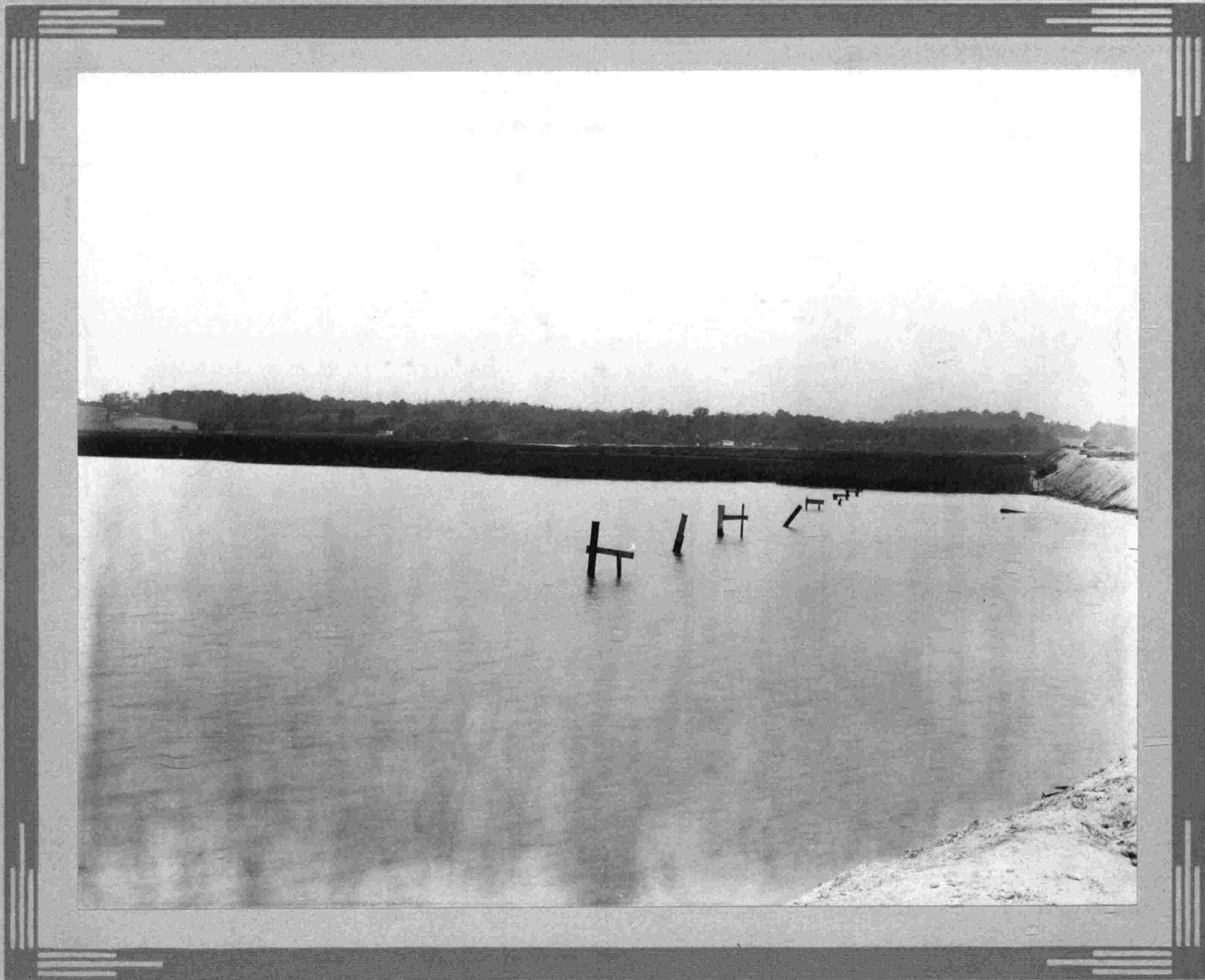
John P. Bruns and Harry M. Wagner

Respondents Exhibit H. 14

Filed 13 June 1916

Defendant's Exhibit 3
Re-filed 28 Apr. 1955

No. 111 June 3rd 1916 Taken from Anne Arundel shore just west of
embankment looking N.W. Lined about 11.05 A.M.



THE HUGHES CO.
BALTIMORE

In the Circuit Court for Anne Arundel County.

In Equity - 4071

Mayor & City Council of Baltimore

vs.

John P. Bremer

&

Harry M. Wagner

Respondents Exhibit 9. H.

Filed 13 June 1915

Defendants Exhibit 3
Re-filed 28 Apr. 1955

No 9. May 3rd 1916 Taken from west side of north end of embankment
looking S.W. Time 8.10 A.M.



THE HUGHES & CO.
BALTIMORE

In the Circuit Court for Anne Arundel County.

In Equity.

Mayor & City Council of Baltimore

vs

John P. Bruner

&

Harry M. Wagner

Respondents' Exhibit 8. H.

6

Filed 13 June 1916

Defendants' Exhibit 3

Re-filed 28 Apr, 1955

No. 8. May 3rd 1916 Taken from e. side of N. end of embankment
looking s. taking in Light Street Bridge.

June 8.07 A. M.

No. 4171 Ejes



THE HUGHES CO.
BALTIMORE

In the Circuit Court for Anne Arundel County

In Equity 4071

Mayor & City Council of Baltimore

vs

John P. Bruns

and

Harry M. Wagner

Respondents Exhibit I H.

Filed 13th June 1916

Defendants' Exhibit 3.

Re-filed 25th Apr., 1955.

No 1. May 3rd 1916. Taken at S. End of Long or Light Street Bridge looking
A. W. along waterfront. June 7. 07 A. M.



THE HUGHES CO.
BALTIMORE