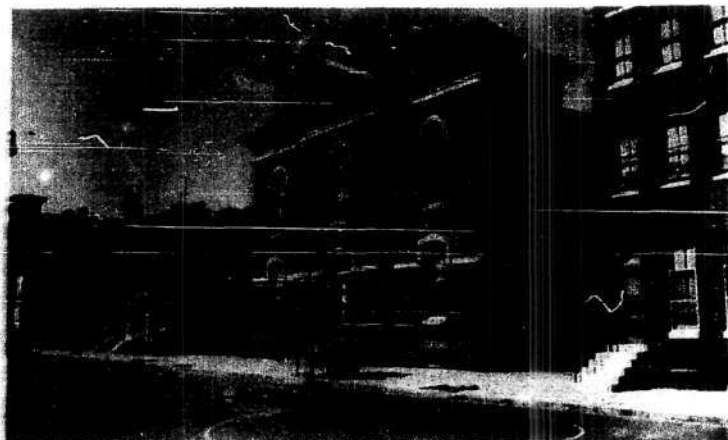


TYPE: Elementary



Front of building, on Division Street.



This block of Division Street, closed to traffic during school hours, provides play space.



North and west faces of building, left and right respectively.

BUILDING CONSTRUCTION AND RATING	
Date (s) of Constr.	1877
Material	Brick
Rating, 1951 School Facilities Survey	Unsatisfactory
Defects Noted in Survey	
1. Inadequate site; cannot be enlarged.	
2. Obsolete	

FACILITIES	NO	REMARKS
Auditorium	0	
Gymnasium	0	
Gym-Auditorium	0	
Cafeteria	0	
Library	1	
Shop	0	
Home Ec. Room	0	
Laboratory	0	
Classroom	17	

AREAS	SQUARE FEET
Total Site (.39 acres)	17,104
Building	7,571
Floor Space <small>ALL FLOORS, INC. BASEMENT</small>	18,662
Play Space	9,013
Hard Surface	9,013
Soil	None
Ornamental and Service	520

REMARKS:

No.
D.

SCHOOL 103
Lanvale

COND RATING

77

ick

satisfactory

ite; cannot

REMARKS

SQUARE FEET

17,104

7,571

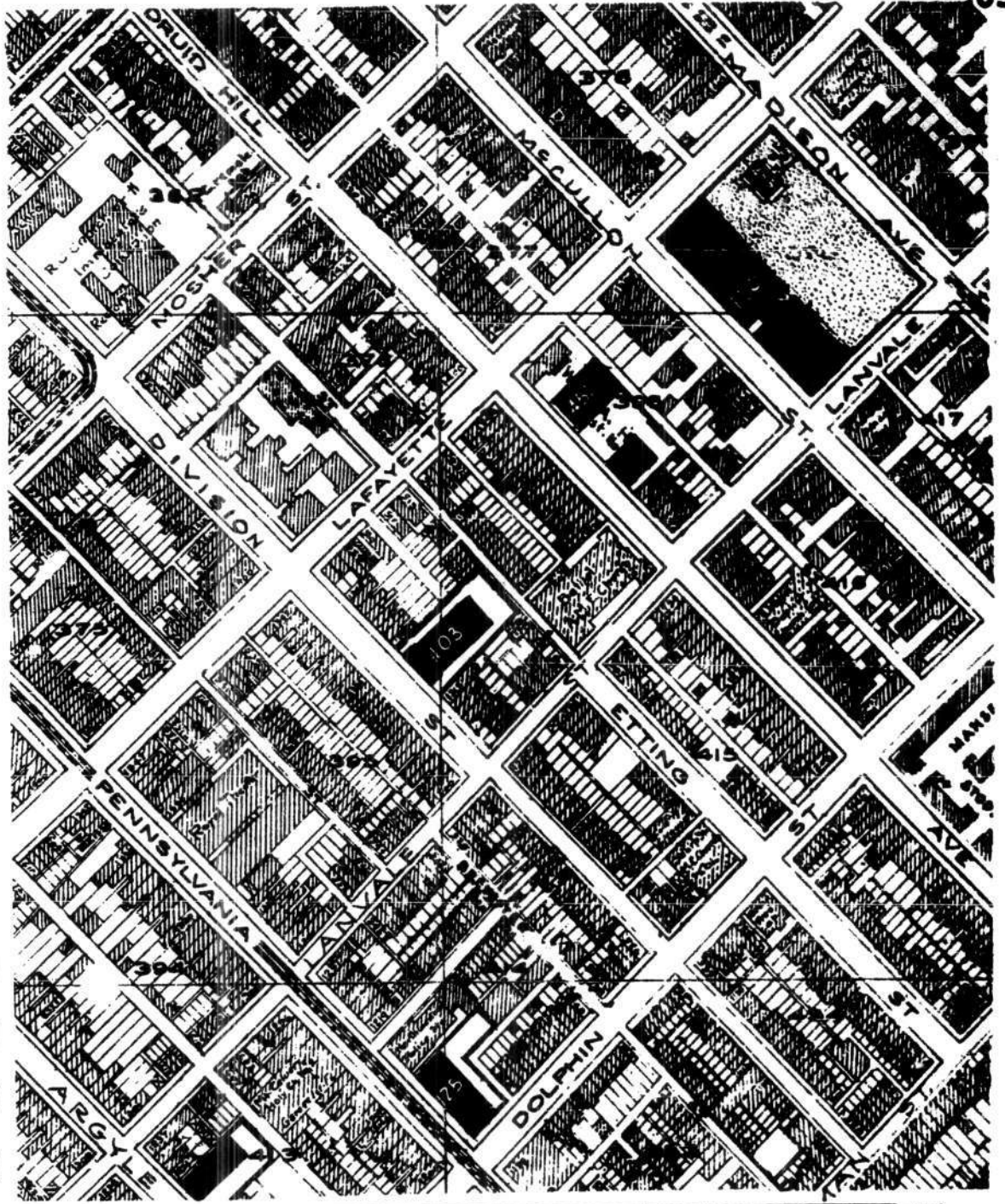
18,662

9,013

9,013

None

520



<p>No. 103—Henry Highland Garnet School—Elementary School Division Street, near Lanvale (17) Site Area: .39 Acre ± Scale: 1" = 200'</p>	<p>No. 451—Joseph C. Briscoe General Vocational School 1216 Druid Hill Avenue (17) Site Area: .25 Acre ± Scale: 1" = 200'</p>
---	---