

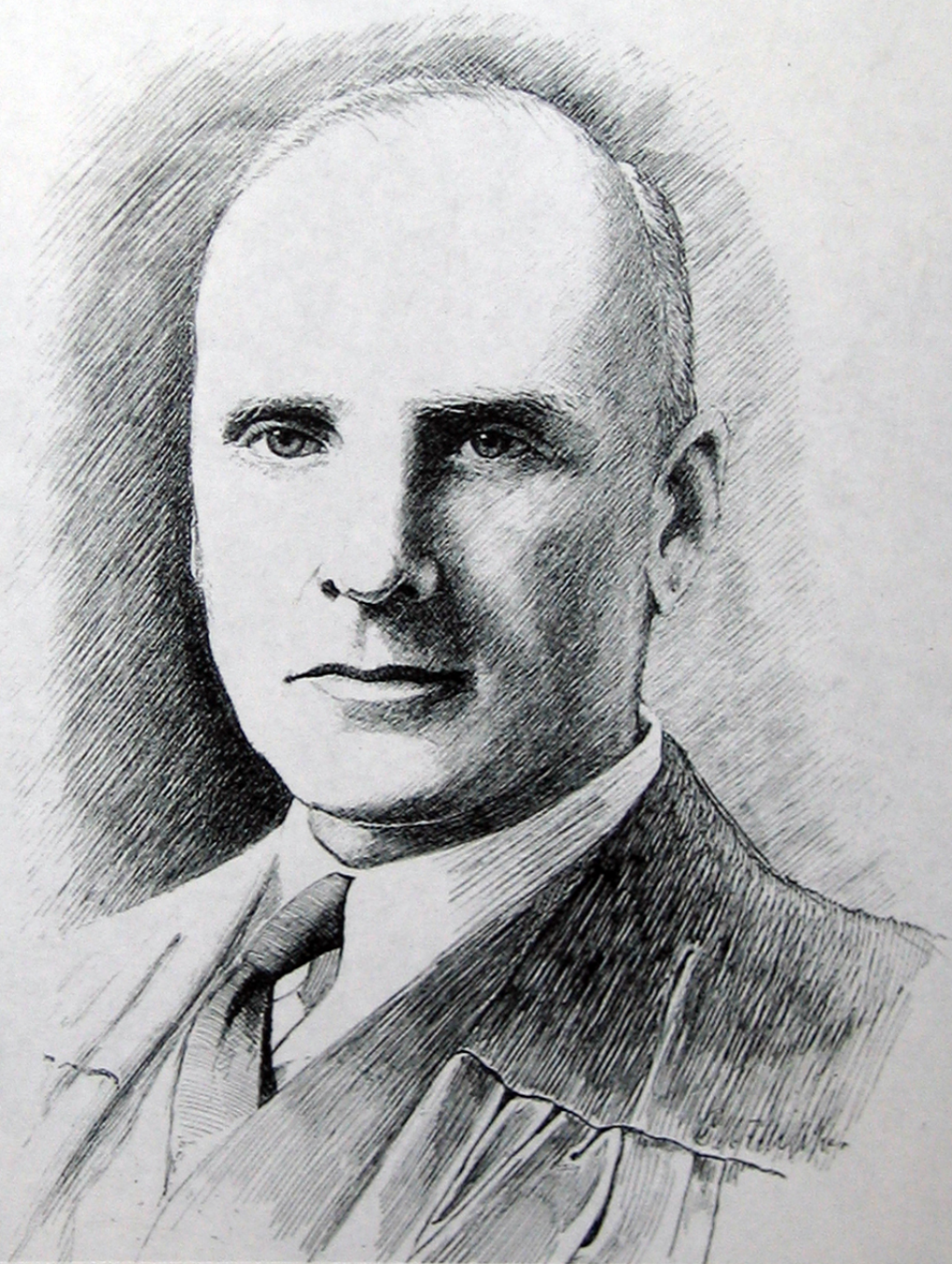
INK DRAWINGS
OF JUDGES OF THE
SUPREME BENCH
OF
BALTIMORE CITY
FROM THE 1930s and '40s

by

CHARLES W. KLIPPER

COURT REPORTER FOR THE COURT OF COMMON PLEAS
SUPREME BENCH OF BALTIMORE CITY

Donated by
Charles W. Klipper, Jr.



ROWLAND K. ADAMS

1889-1944

Associate Judge, Supreme Bench
1934-1943

Associate Judge, Court of Appeals
1943-1944



CARROLL T. BOND

1873-1943

Associate Judge, Supreme Bench

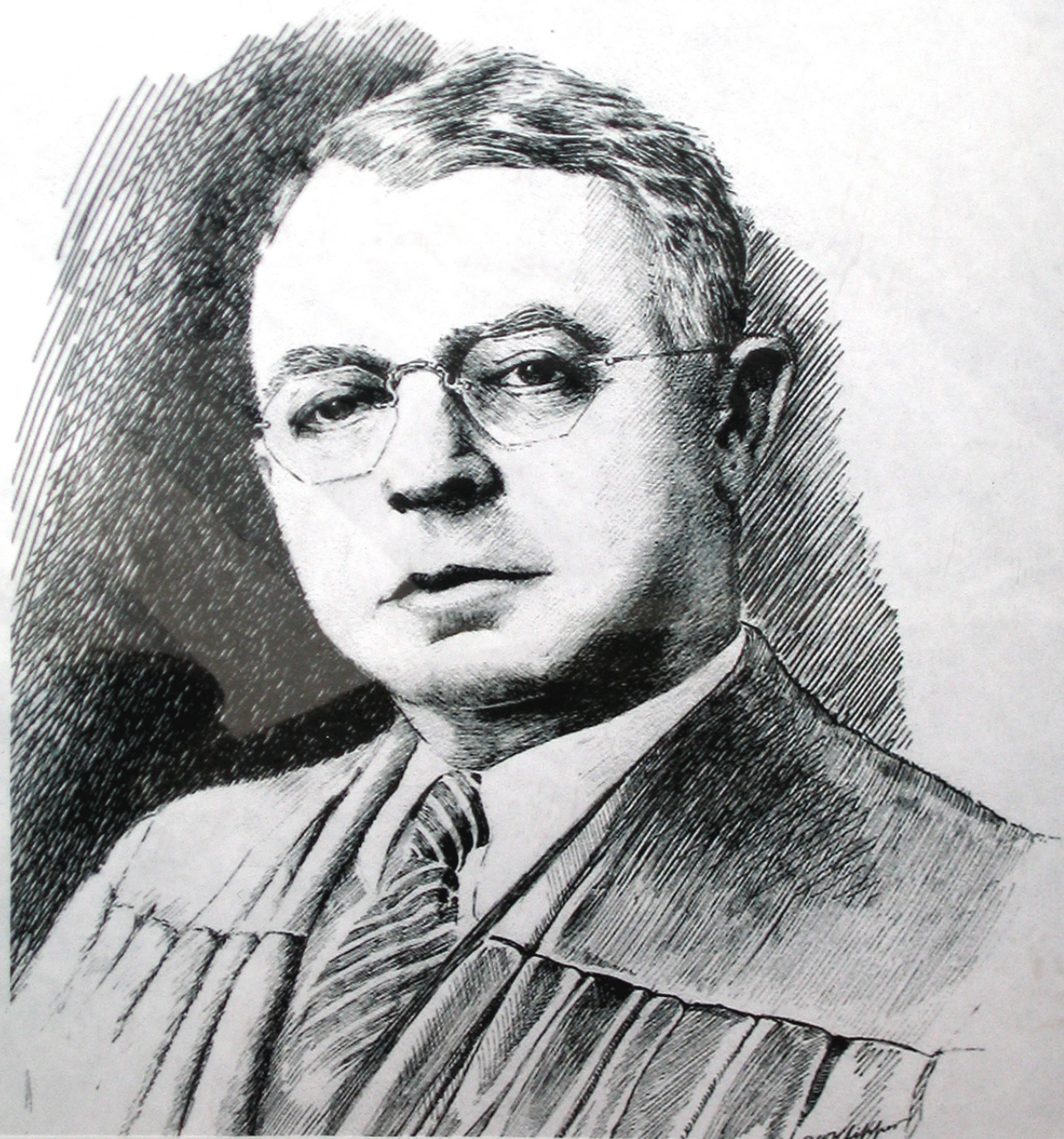
1911-1924

Chief Judge, Court of Appeals

1924-1943



DUKE BOND
1869-1953
Associate Judge, Supreme Bench
1922-1938



EDWIN T. DICKERSON

1878-1958

Associate Judge, Supreme Bench

1936-1948



ELI FRANK, SR.
1874-1958
Associate Judge, Supreme Bench



HERMAN M. MOSER
1900-1956
Associate Judge, Supreme Bench
1944-1956



EUGENE O'DUNNE

1875-1959

Associate Judge, Supreme Bench

1927-1945



ALBERT S. J. OWENS
1863-1937
Associate Judge, Supreme bench
1926-1937



J. ABNER SAYLER
1880-1957
Associate Judge, Supreme Bench
1937-1950



W. CONWELL SMITH

1887-1954

Associate Judge, Supreme Bench

1938-1944

Chief Judge, Supreme Bench

1944-1954

