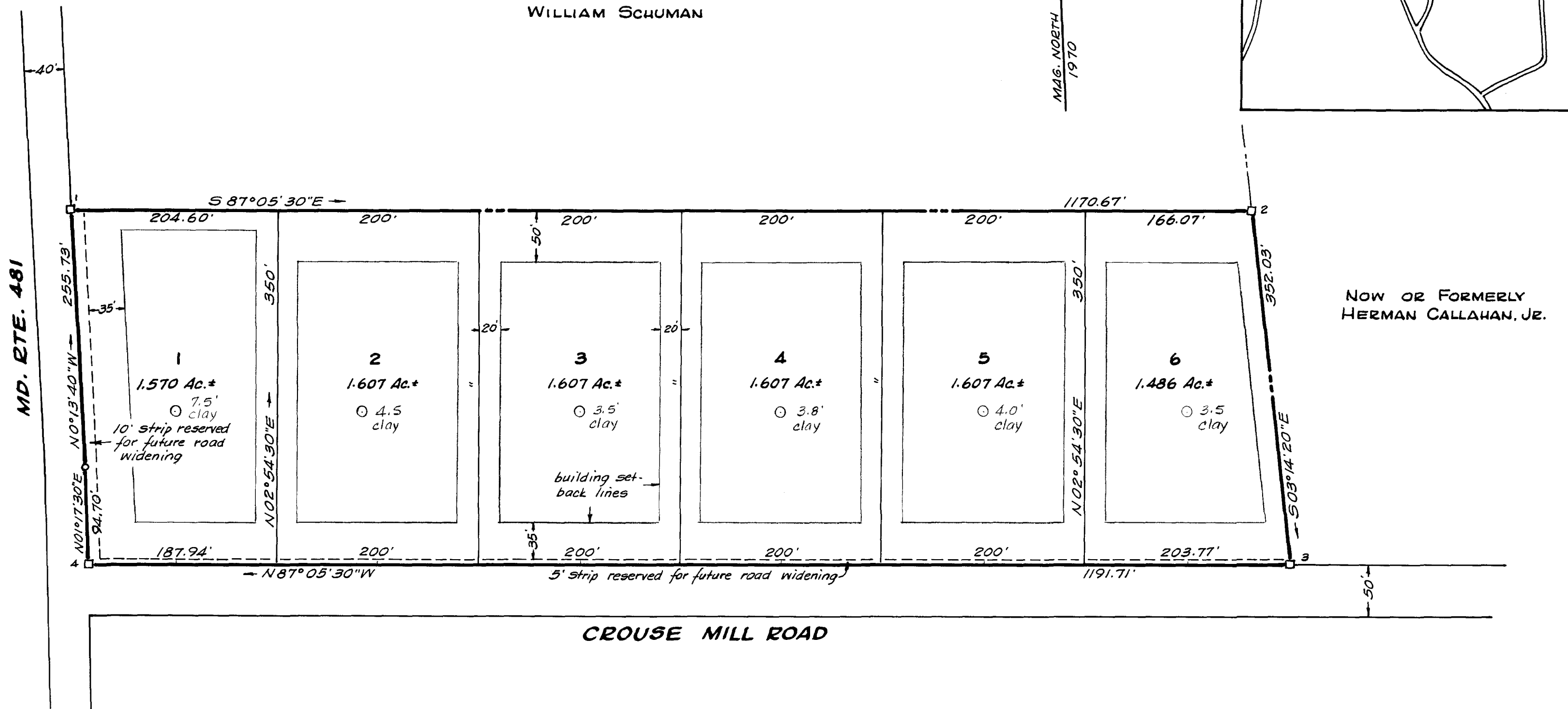
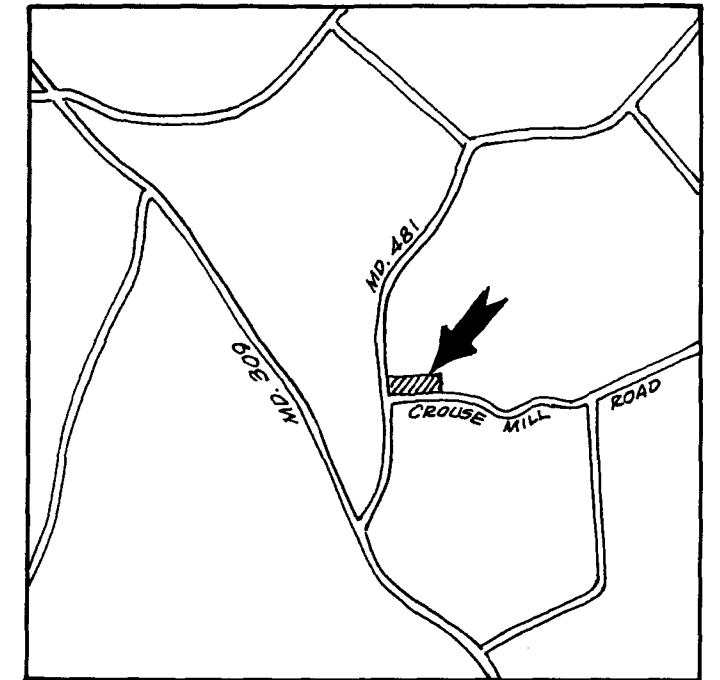


COORDINATES

NO.	NORTH	EAST
1	4572.19	5017.20
2	4512.79	6186.36
3	4161.32	6206.25
4	4221.79	5016.07

WILLIAM SCHUMAN



NOW OR FORMERLY
HERMAN CALLAHAN, JR.

SUBDIVISION PLAT

TUCKAHOE LAND DEVELOPMENT CORP.

6TH DISTRICT, QUEEN ANNES CO., MD.

Scale 1"=100' Dec. 1972.

William R. Nuttle, Reg. Surveyor
Chestertown, Md.



Approved by the Queen Annes County
Health Department.

Approved by the Queen Annes County
Planning and Zoning Commission.

This plat represents a survey by me, and the
land shown is in title to the owner represented
below.

William R. Nuttle Surveyor

Owner

