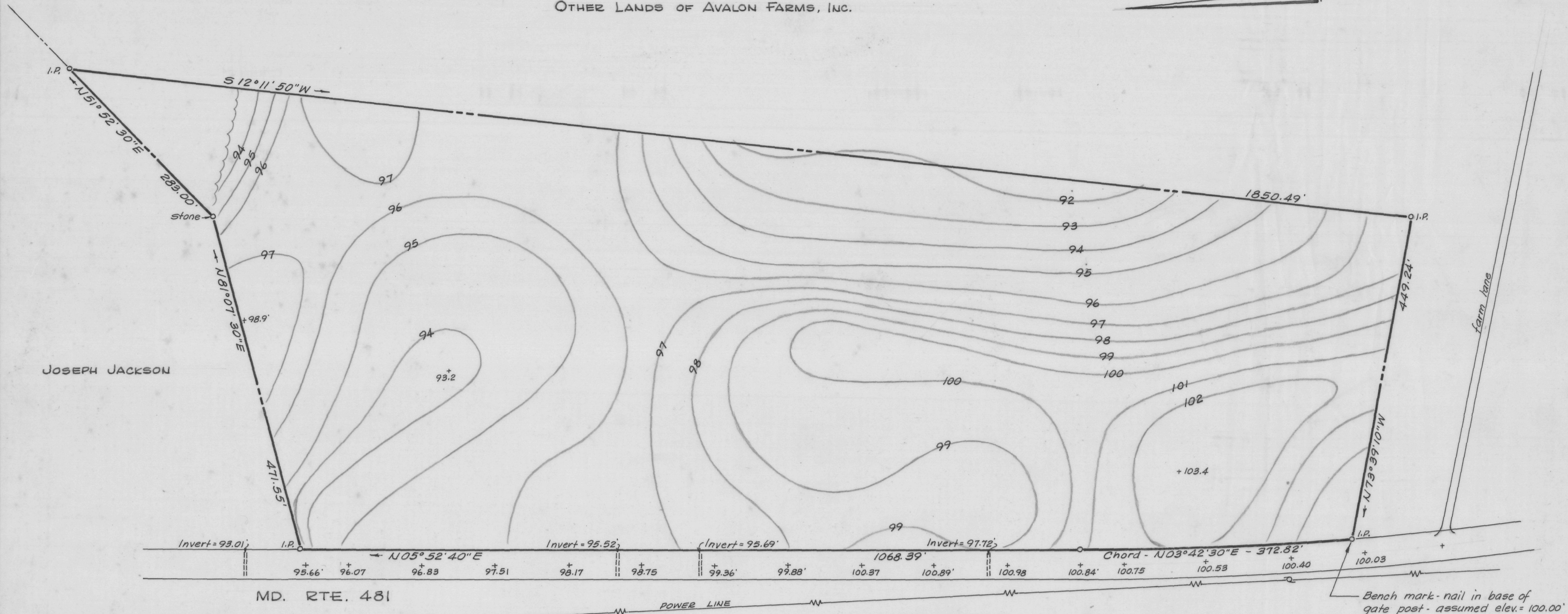


OTHER LANDS OF AVALON FARMS, INC.

MAG. NORTH  
1970



JOSEPH JACKSON

MD. RTE. 481

POWER LINE

Farm Lane

Bench mark - nail in base of gate post - assumed elev. = 100.00'

TOPOGRAPHICAL SURVEY  
AVALON FARMS, INC.

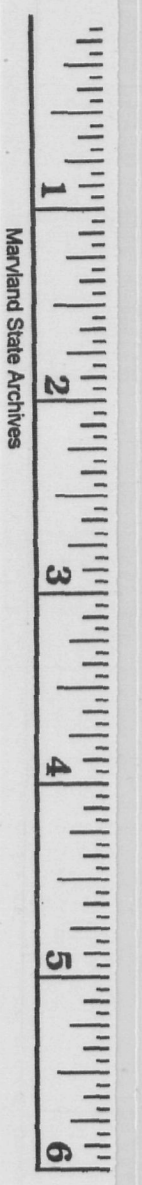
6<sup>TH</sup> DISTRICT, QUEEN ANNES CO., MD.

Scale 1"=100' Aug. 1970.

William R. Nuttle, Reg. Surveyor  
Chestertown, Md.

Note: There are short stretches of ditch on the east side of Md. Rte. 481, but they are not significantly lower than adjacent ground. Culverts shown are 16" CMP.

I.P. = iron pipe



MSASC 5593-7-477