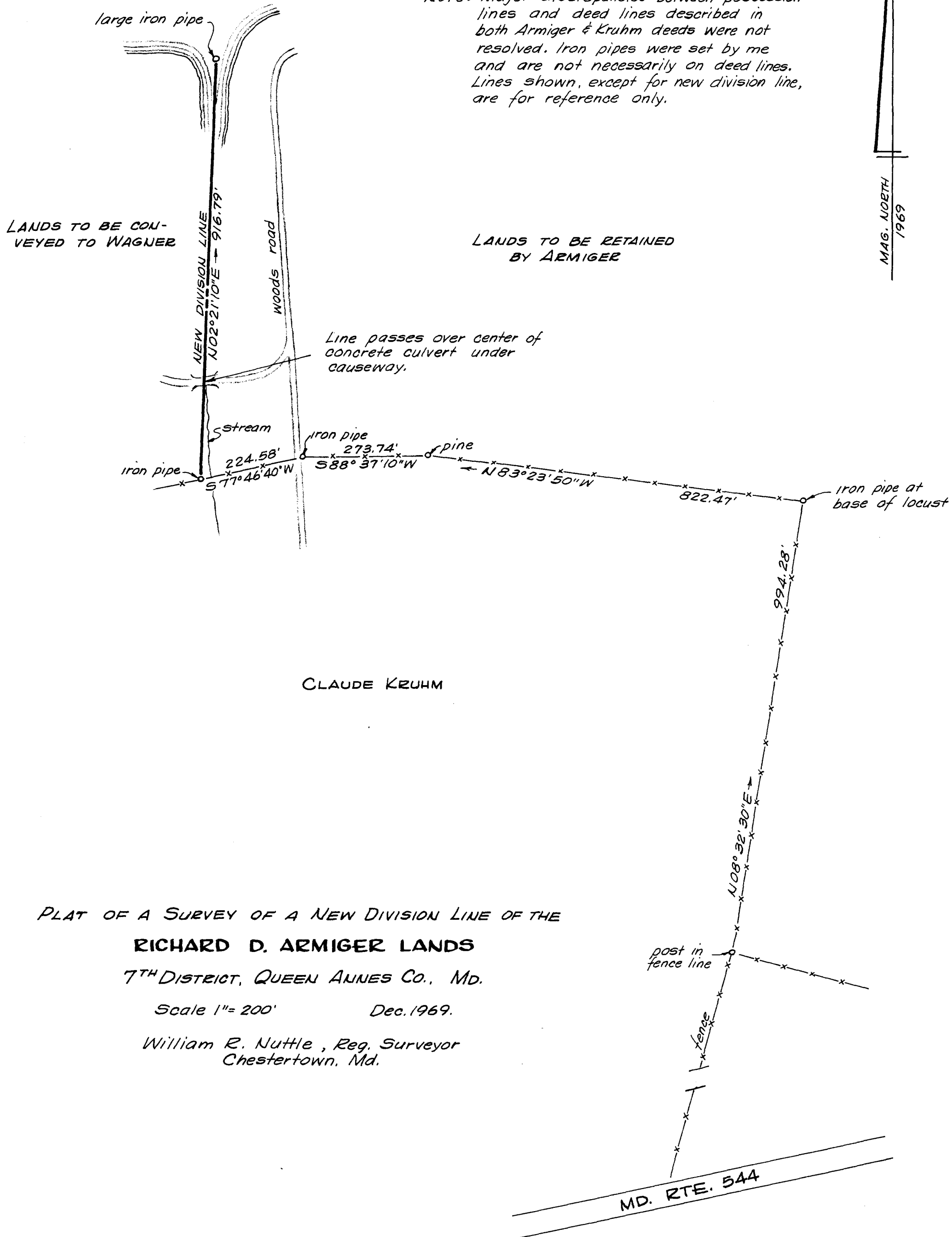


CHESTER RIVER

Note: Major discrepancies between possession lines and deed lines described in both Armiger & Kruhm deeds were not resolved. Iron pipes were set by me and are not necessarily on deed lines. Lines shown, except for new division line, are for reference only.



MAG. NOETH
1969

CLAUDE KRUEH

PLAT OF A SURVEY OF A NEW DIVISION LINE OF THE
RICHARD D. ARMIGER LANDS
7TH DISTRICT, QUEEN ANNES CO., MD.

Scale 1" = 200' Dec. 1969.

William R. Nuttle, Reg. Surveyor
Chestertown, Md.

MSA SC 5593-7-473