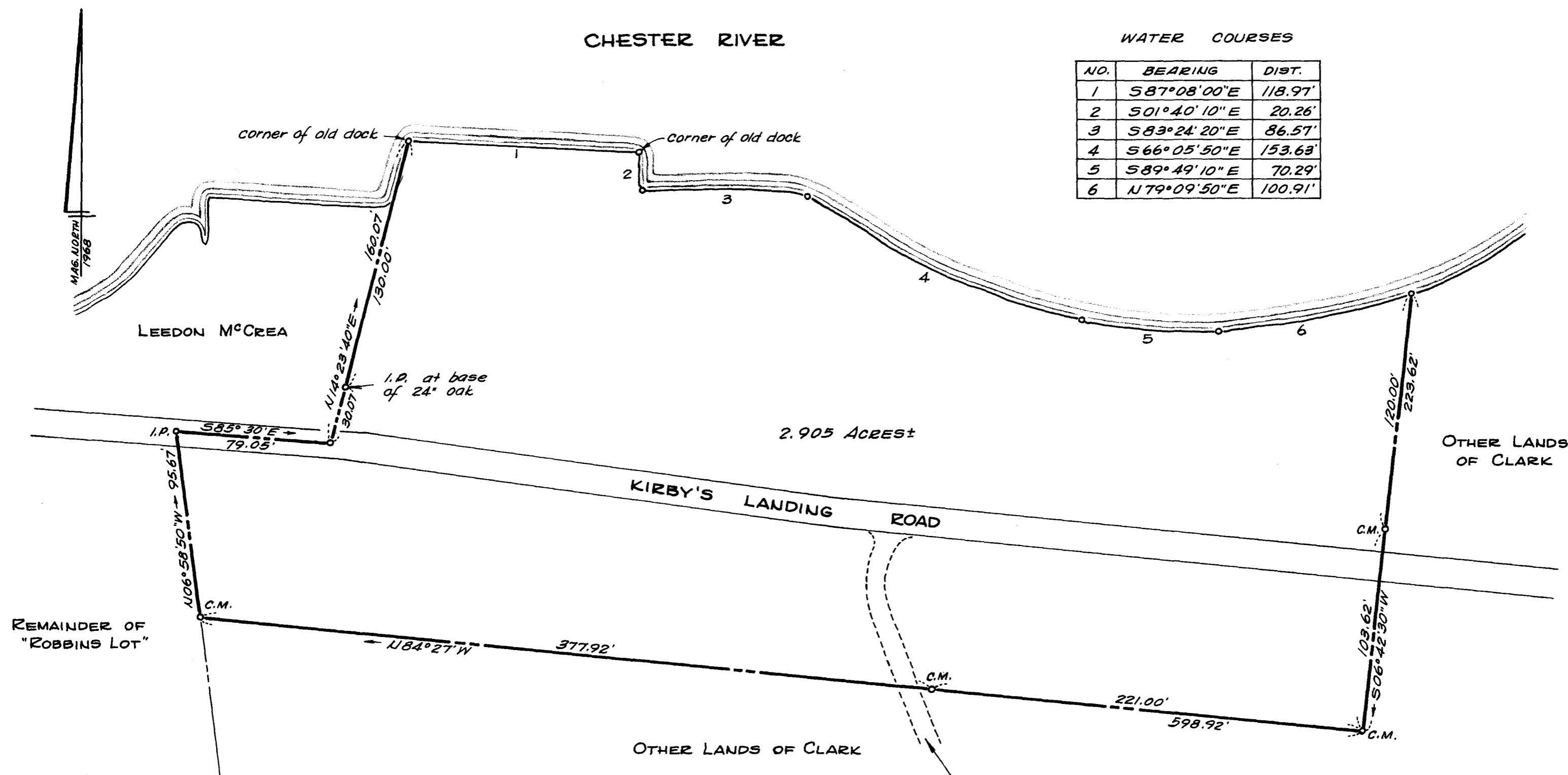


CHESTER RIVER

WATER COURSES

NO.	BEARING	DIST.
1	S 87° 08' 00" E	118.97'
2	S 01° 40' 10" E	20.26'
3	S 83° 24' 20" E	86.57'
4	S 66° 05' 50" E	153.63'
5	S 89° 49' 10" E	70.29'
6	N 79° 09' 50" E	100.91'

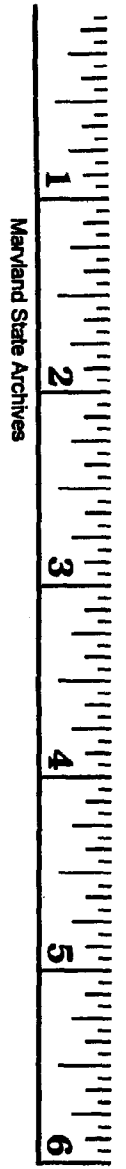


PLAT OF A SURVEY OF A PART OF THE  
**GEORGE E. CLARK LANDS**  
 7<sup>TH</sup> DISTRICT, QUEEN ANNES Co., MD.  
 Scale 1"=50' May 1969.  
 William R. Nuttle, Reg. Surveyor  
 Chestertown, Md.

Abandoned public road. See TSP 5/78  
 for conveyance from County Commissioners  
 to Geo. E. Clark, May 1952.

I.P. = iron pipe  
 C.M. = concrete monument

for John D. Trimmer



MSASC 6593-7-458