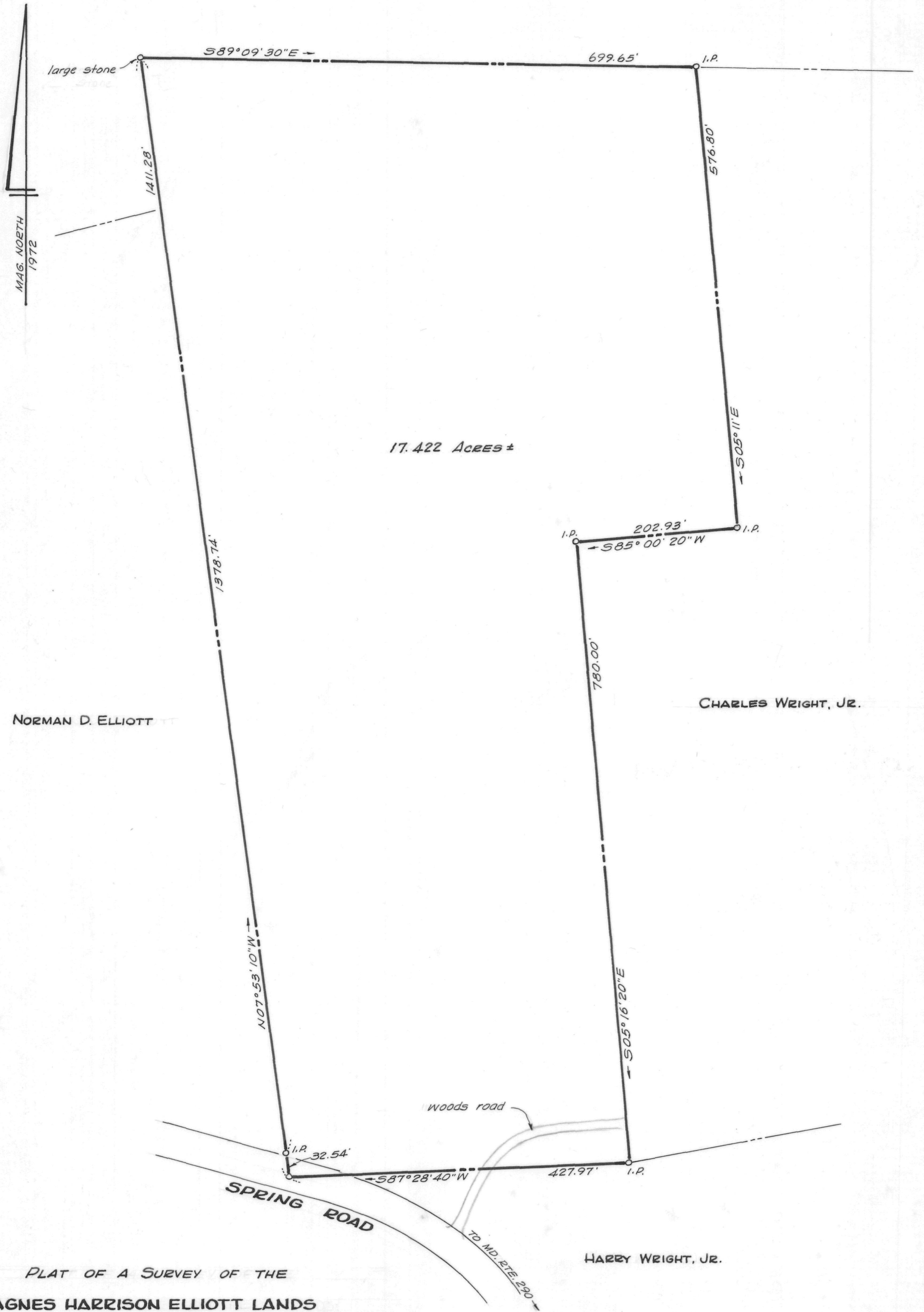




Maryland State Archives

"JOHN HARRISON FARM"



17.422 Acres ±

NORMAN D. ELLIOTT

CHARLES WRIGHT, JR.

HARRY WRIGHT, JR.

PLAT OF A SURVEY OF THE
AGNES HARRISON ELLIOTT LANDS

7TH DISTRICT, QUEEN ANNES CO., MD.

Scale 1" = 100' Aug. 1972.

William R. Nuttle, Reg. Surveyor
Chestertown, Md.

I.P. = iron pipe
Note: All markers witnessed
by a steel fence post.

MSA SC 5593-7-445