

SEVENTH DAY ADVENTIST SCHOOL

6.788 ACRES ±

OTHER LANDS OF GEORGE

MEDFORD BAXTER

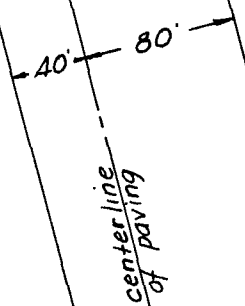
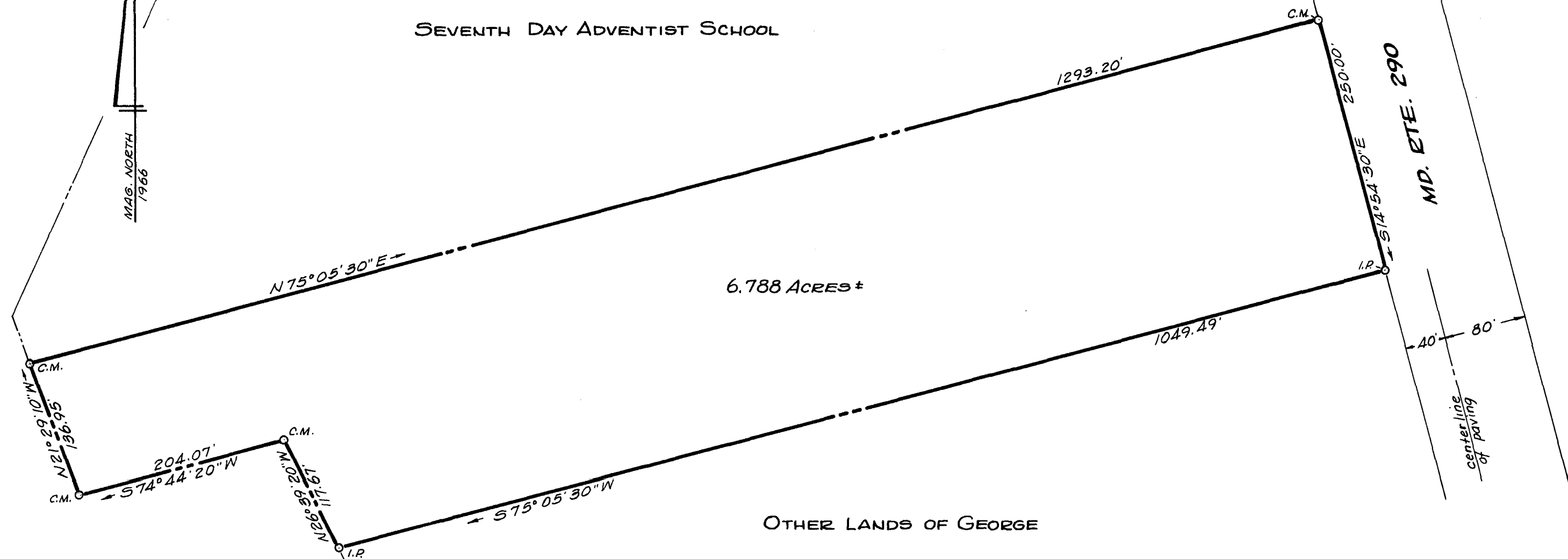
Note: Baxter lines are from a property line agreement between Baxter and George.

I.P. = iron pipe
C.M. = concrete monument

PLAT OF A SURVEY OF PART OF THE
JOSEPH M. GEORGE LANDS
7TH DISTRICT, QUEEN ANNES CO., MD.

Scale 1"=100' Oct. 1974.

William R. Nuttle, Reg. Surveyor
Chestertown, Md.



Maryland State Archives

MSASC 5593-7-440