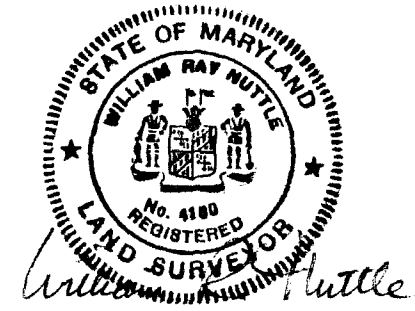
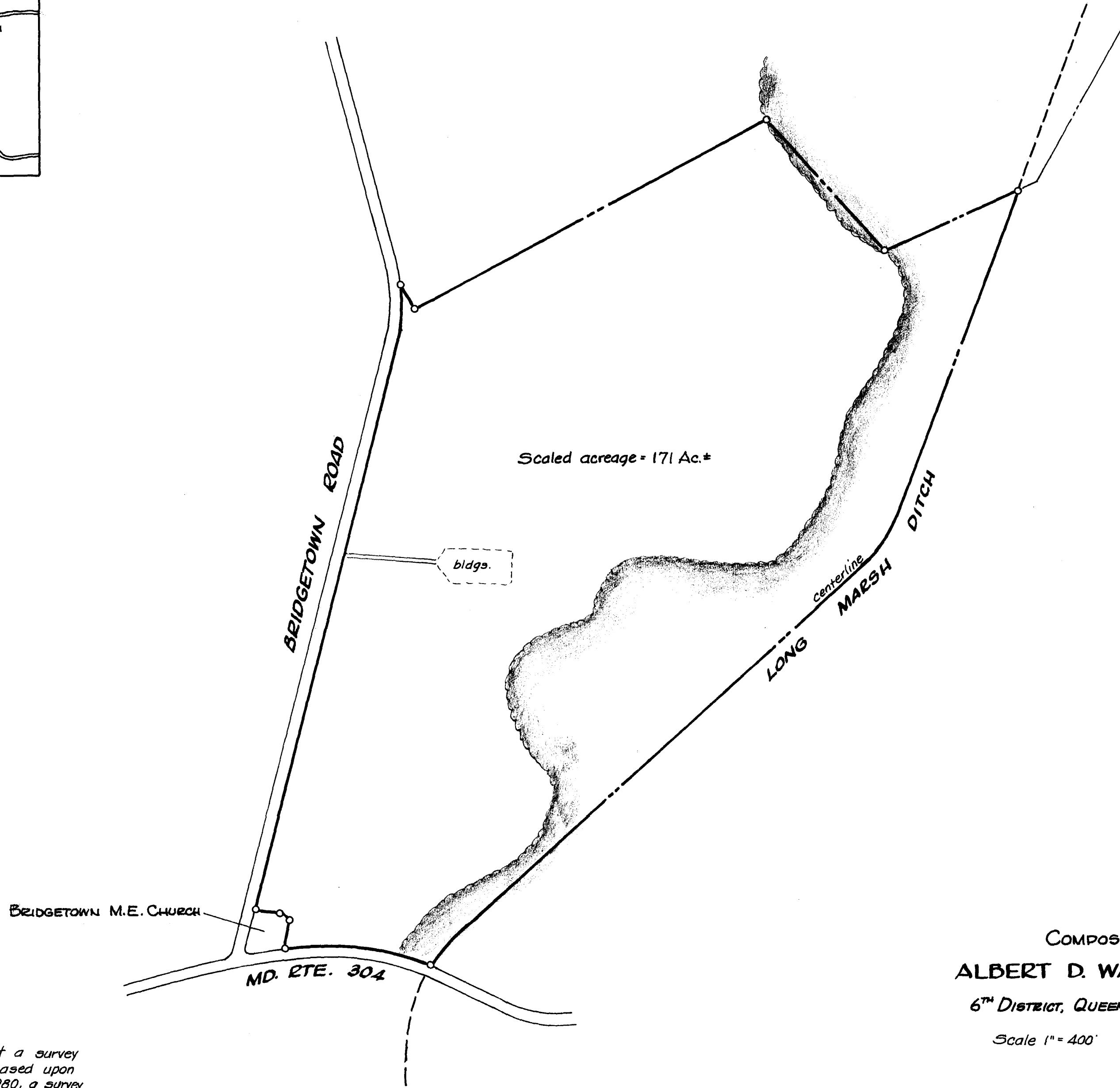


SPENCER MERRICK



Maryland State Archives



COMPOSITE PLAT
ALBERT D. WARREN LANDS

6TH DISTRICT, QUEEN ANNES CO., MD.

Scale 1" = 400' July 1988.

William R. Nuttle, Reg. Surveyor
Chestertown, Md.

Note: This plat does not represent a survey by me of the Warren farm. It is based upon my survey of the Merrick farm in 1980, a survey by John Fisher in 1948, and a U.S.D.A. aerial photo.