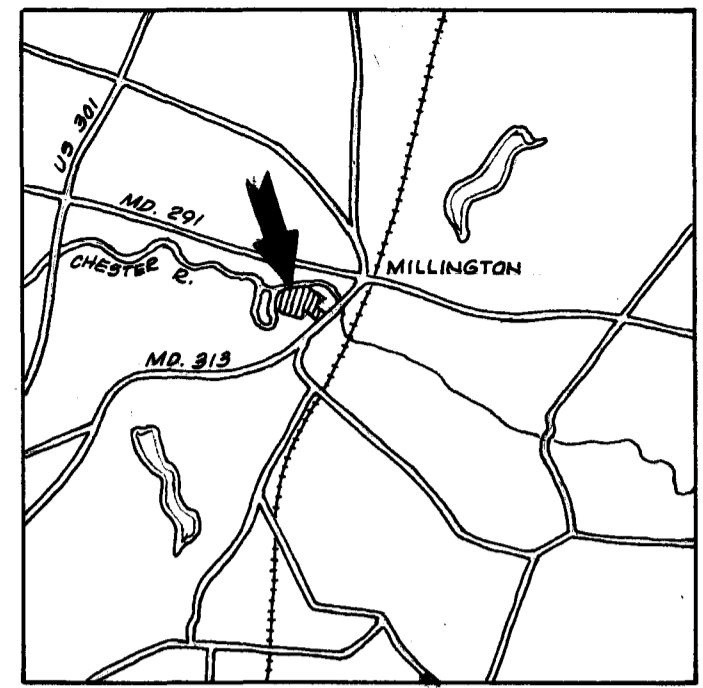
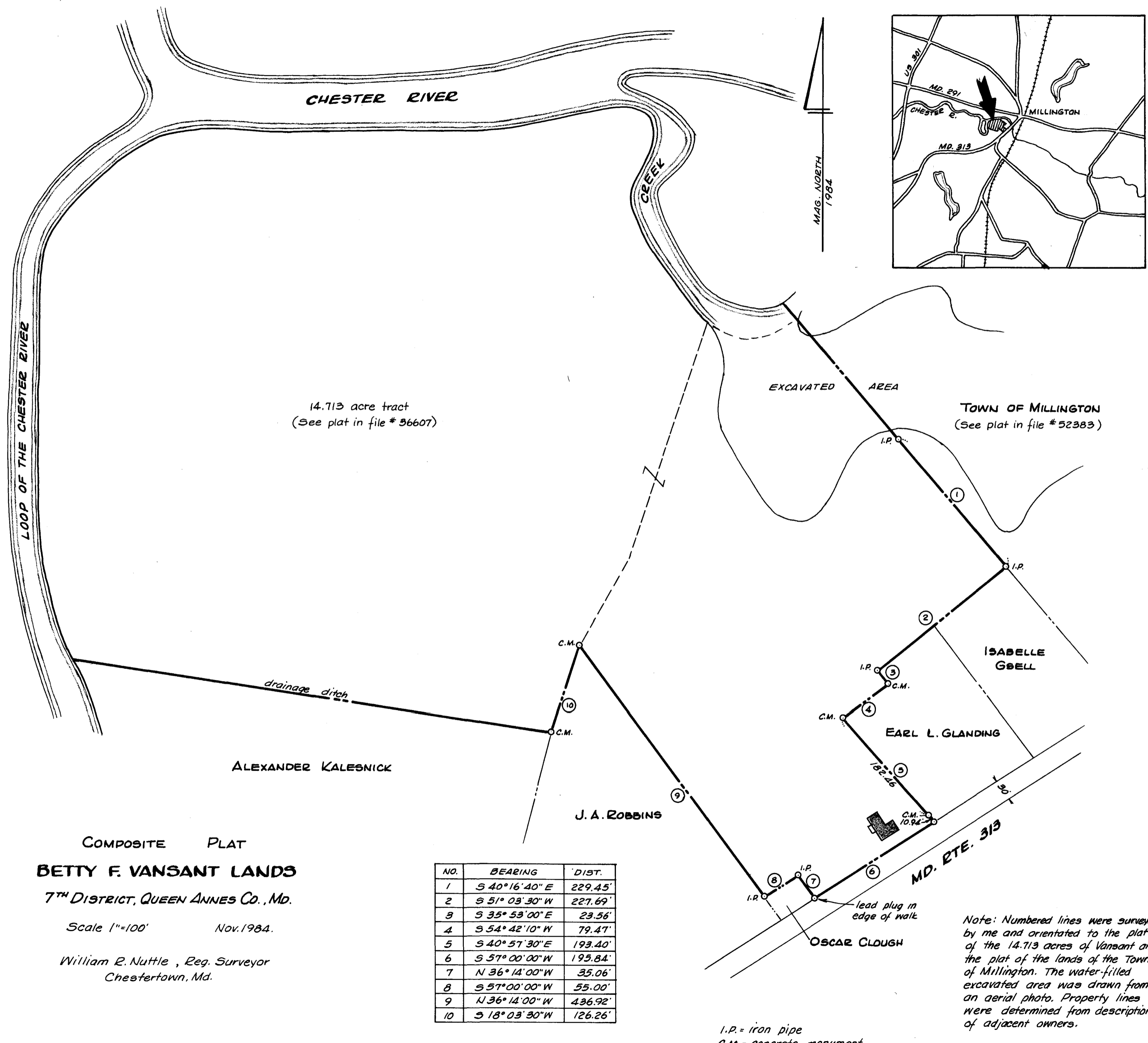


Maryland State Archives



MAG. NORTH
1984

14.713 acre tract
(See plat in file # 36607)

TOWN OF MILLINGTON
(See plat in file # 52383)

COMPOSITE PLAT
BETTY F. VANSANT LANDS
7TH DISTRICT, QUEEN ANNES CO., MD.

Scale 1"=100' Nov. 1984.

William R. Nuttle, Reg. Surveyor
Chestertown, Md.

NO.	BEARING	DIST.
1	S 40° 16' 40" E	229.45'
2	S 51° 03' 30" W	227.69'
3	S 35° 53' 00" E	23.56'
4	S 54° 42' 10" W	79.47'
5	S 40° 57' 30" E	193.40'
6	S 57° 00' 00" W	195.84'
7	N 36° 14' 00" W	35.06'
8	S 57° 00' 00" W	55.00'
9	N 36° 14' 00" W	436.92'
10	S 18° 03' 30" W	126.26'

I.P. = iron pipe
C.M. = concrete monument

Note: Numbered lines were surveyed by me and orientated to the plat of the 14.713 acres of Vansant and the plat of the lands of the Town of Millington. The water-filled excavated area was drawn from an aerial photo. Property lines were determined from descriptions of adjacent owners.

MSA 50-5593-7-430