

Approved by the Queen Annes County Health Dept.
 Approved by the Queen Annes County Dept. of Public Works.
 Approved by the Queen Annes County Sed. Control Administrator.
 Approved by the Maryland State Highway Administration.
 Approved by the Queen Annes Co. Planning & Zoning Comm.

HARPER
STARKEY

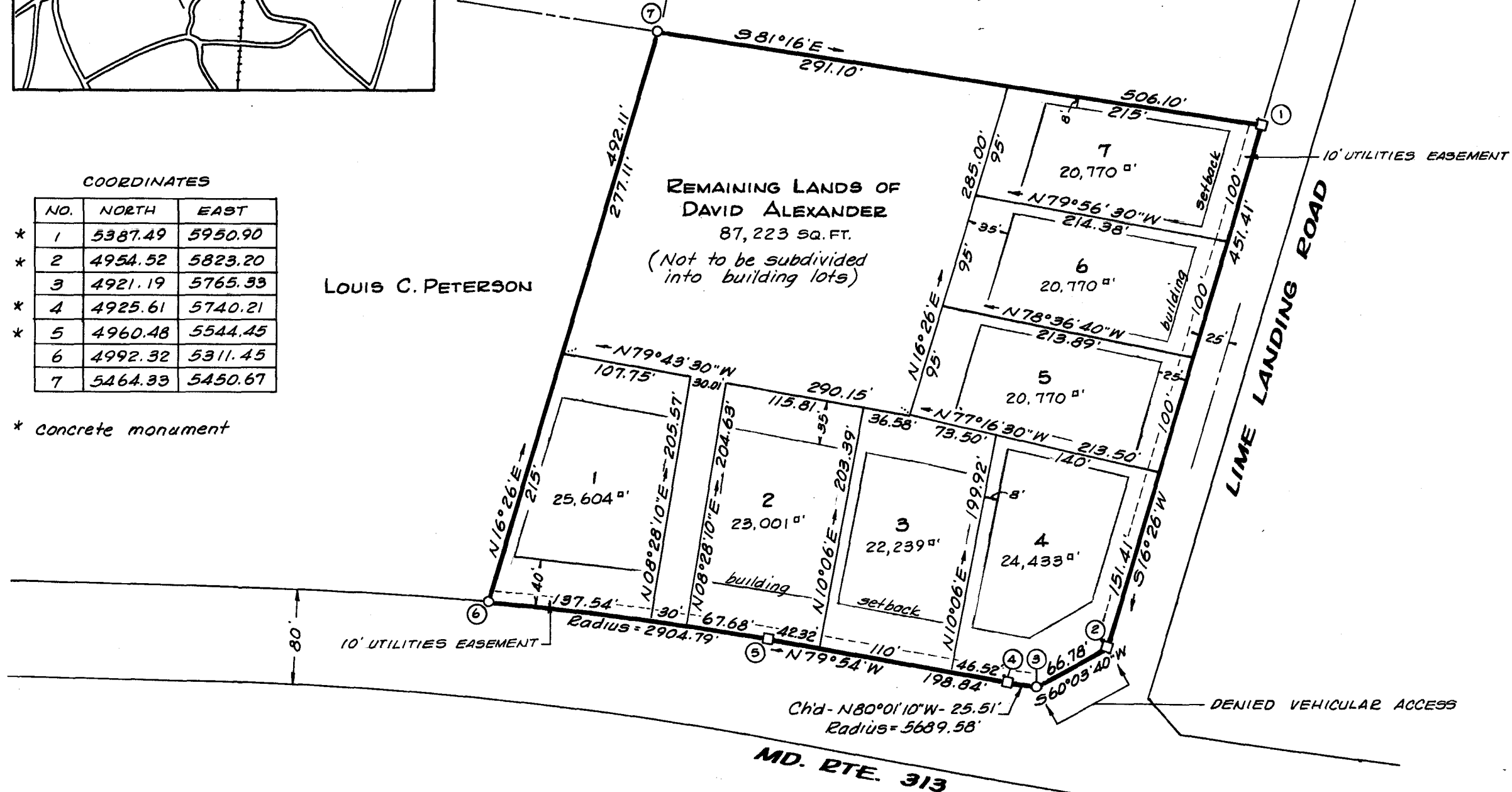
SARAH WILKERSON

COORDINATES

NO.	NORTH	EAST
* 1	5387.49	5950.90
* 2	4954.52	5823.20
* 3	4921.19	5765.33
* 4	4925.61	5740.21
* 5	4960.48	5544.45
* 6	4992.32	5311.45
* 7	5464.33	5450.67

LOUIS C. PETERSON

* concrete monument



SUBDIVISION PLAT
ALEXANDER LOTS
 7TH DISTRICT, QUEEN ANNES CO., MD.

Scale 1" = 100'

Feb. 1976.

William R. Nuttle, Reg. Surveyor
 Chestertown, Md.

This is to certify that the land shown on this plat has been surveyed by me and is in title to the owner shown hereon. The monuments have been set in accordance with Section 60, Article 17, Annotated Code of Md.

William R. Nuttle
 Surveyor

Owner



MSA SC5593-7424



Maryland State Archives