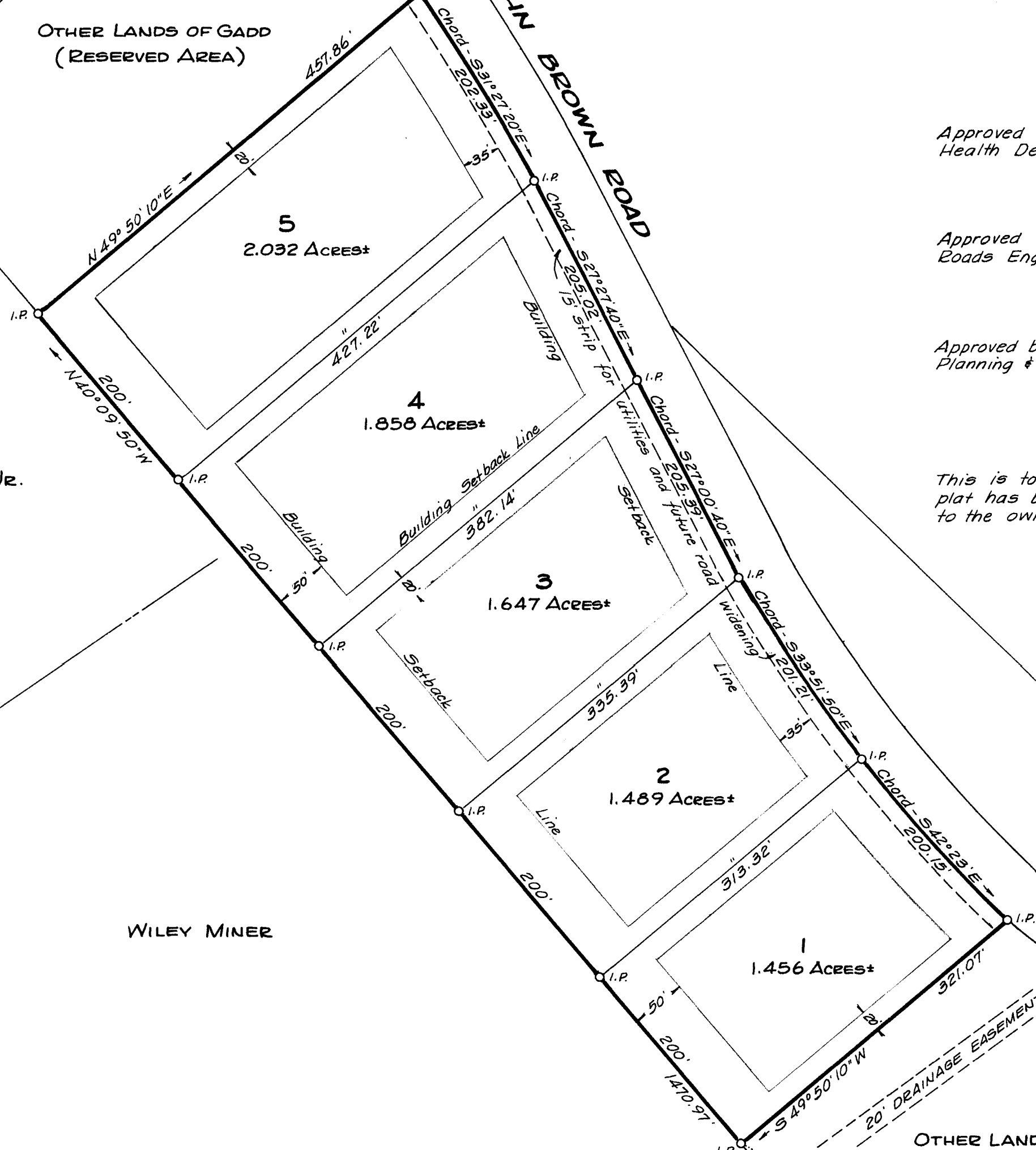


MILTON O. SHEUBROOKS

OTHER LANDS OF GADD
(RESERVED AREA)

cylindrical
concrete marker



W. HAZEL DUDLEY, JR.

WILEY MINER

OTHER LANDS OF GADD
(RESERVED AREA)

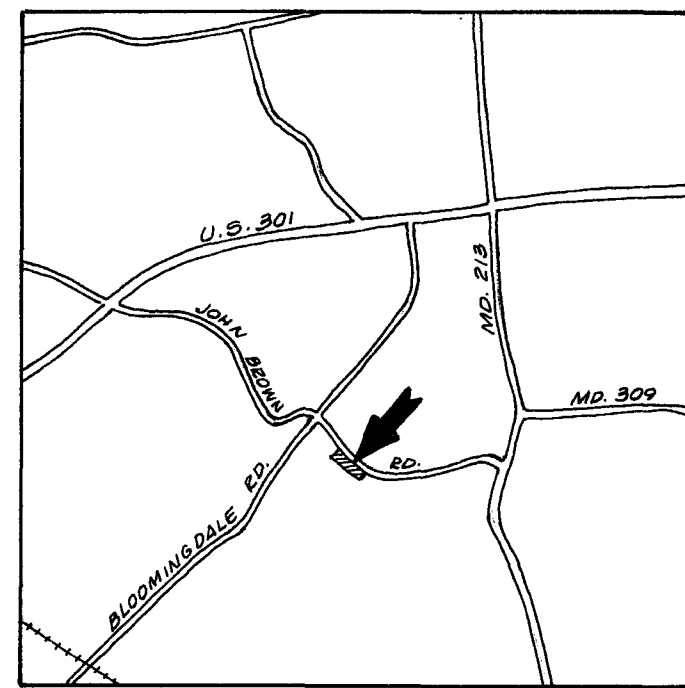
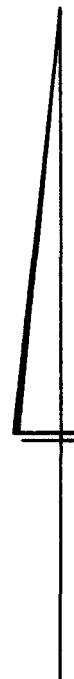
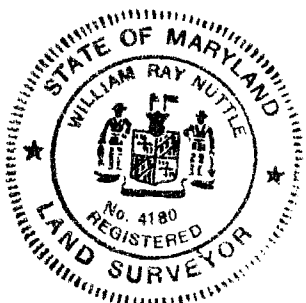
PARCEL 2
REYNOLDS & GANNON SUBDIVISION

WILLARD F. SMITH

SUBDIVISION PLAT
GADD SUBDIVISION
5TH DISTRICT, QUEEN ANNES CO., MD.

Scale 1"=100' Jan. 1975

William R. Nuttle, Reg. Surveyor
Chestertown, Md.



Approved by the Queen Annes County
Health Department.

Approved by the Queen Annes County
Roads Engineer.

Approved by the Queen Annes County
Planning & Zoning Commission.

This is to certify that the land shown on this
plat has been surveyed by me and is in title
to the owner shown hereon.

William R. Nuttle

Surveyor

Owner

cylindrical
concrete marker

I.P. = iron pipe