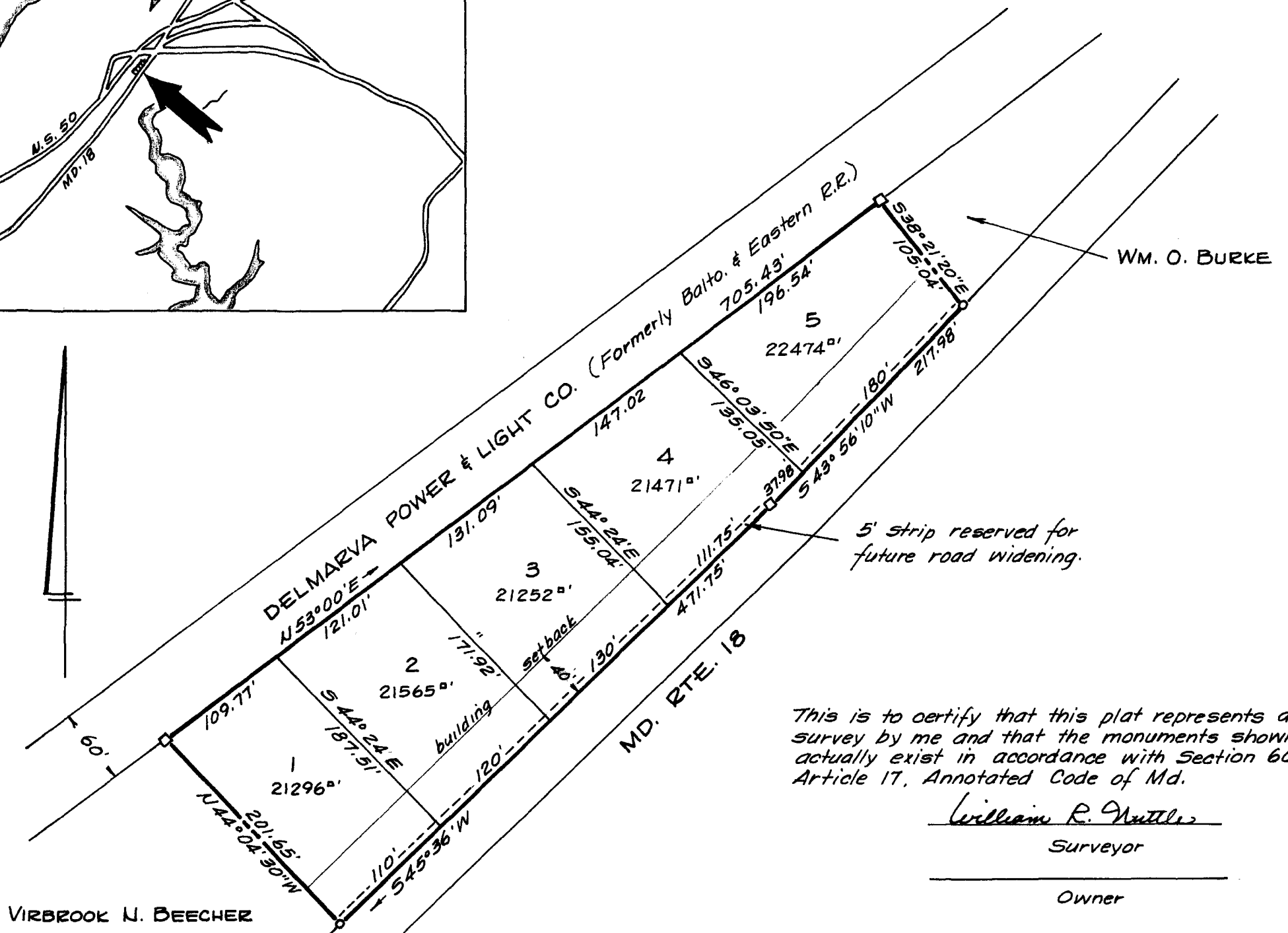


Approved by the Queen Annes County Health Dept.

Approved by the Queen Annes County Planning & Zoning Comm.



This is to certify that this plat represents a survey by me and that the monuments shown actually exist in accordance with Section 60, Article 17, Annotated Code of Md.

William R. Nuttle
Surveyor

Owner

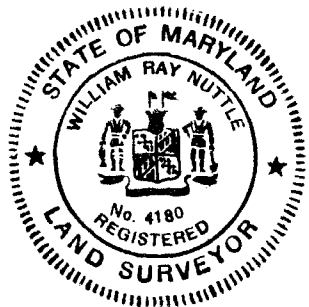
SUBDIVISION PLAT

WILLIAM DENNY LANDS

5TH DISTRICT, QUEEN ANNES CO., MD.

Scale 1"=100' June 1969

William R. Nuttle, Reg. Surveyor
Chestertown, Md.



- concrete monument
- steel surveyors stake

104-6-8655-05 615M