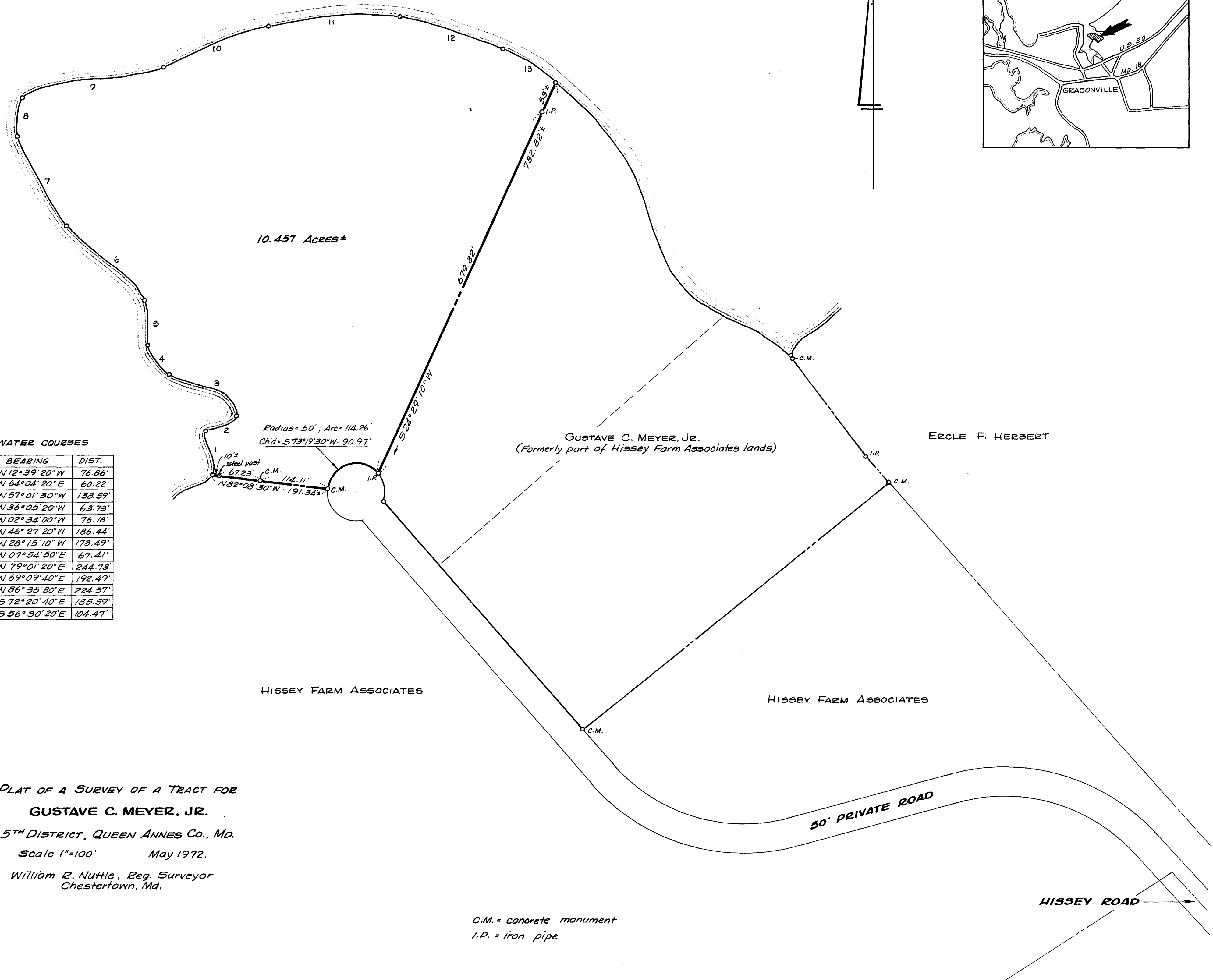
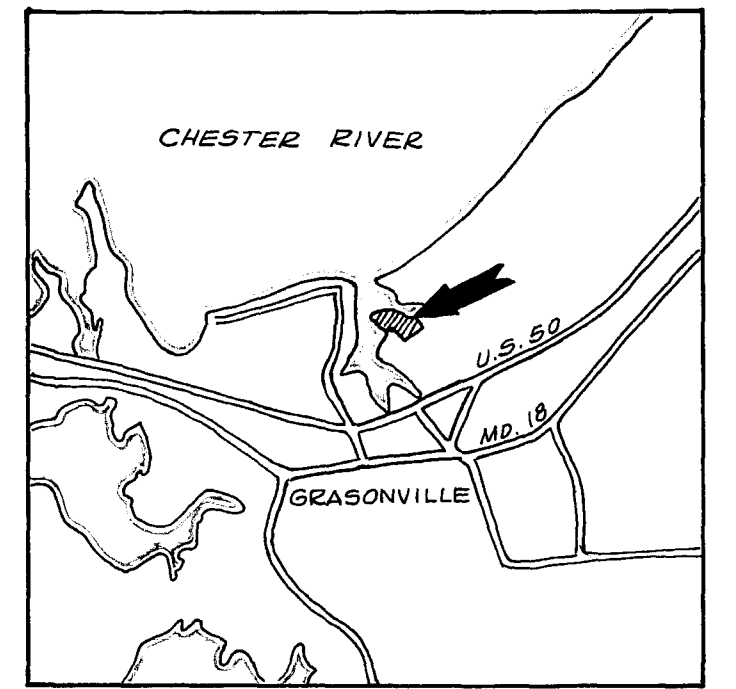


WINCHESTER CREEK



10.457 Acres ±

WATER COURSES

NO.	BEARING	DIST.
1	N 12° 39' 20" W	76.86'
2	N 64° 04' 20" E	60.22'
3	N 57° 01' 30" W	138.59'
4	N 36° 05' 20" W	63.73'
5	N 02° 34' 00" W	76.16'
6	N 46° 27' 20" W	186.44'
7	N 28° 15' 10" W	173.49'
8	N 07° 54' 50" E	67.41'
9	N 79° 01' 20" E	244.73'
10	N 69° 09' 40" E	192.49'
11	N 86° 35' 30" E	224.57'
12	S 72° 20' 40" E	135.59'
13	S 56° 30' 20" E	104.41'

Radius = 50'; Arc = 114.26'
Ch'd = 573°19'30"W - 90.97'

10'±
Steel post
C.M. 67.23'
N 82° 08' 30" W - 191.343' C.M.

GUSTAVE C. MEYER, JR.
(Formerly part of Hissey Farm Associates lands)

ERCLE F. HERBERT

HISSEY FARM ASSOCIATES

HISSEY FARM ASSOCIATES

50' PRIVATE ROAD

HISSEY ROAD

C.M. = Concrete monument
I.P. = iron pipe

PLAT OF A SURVEY OF A TRACT FOR
GUSTAVE C. MEYER, JR.
5TH DISTRICT, QUEEN ANNES Co., MD.
Scale 1"=100' May 1972.
William R. Nuttle, Reg. Surveyor
Chestertown, Md.