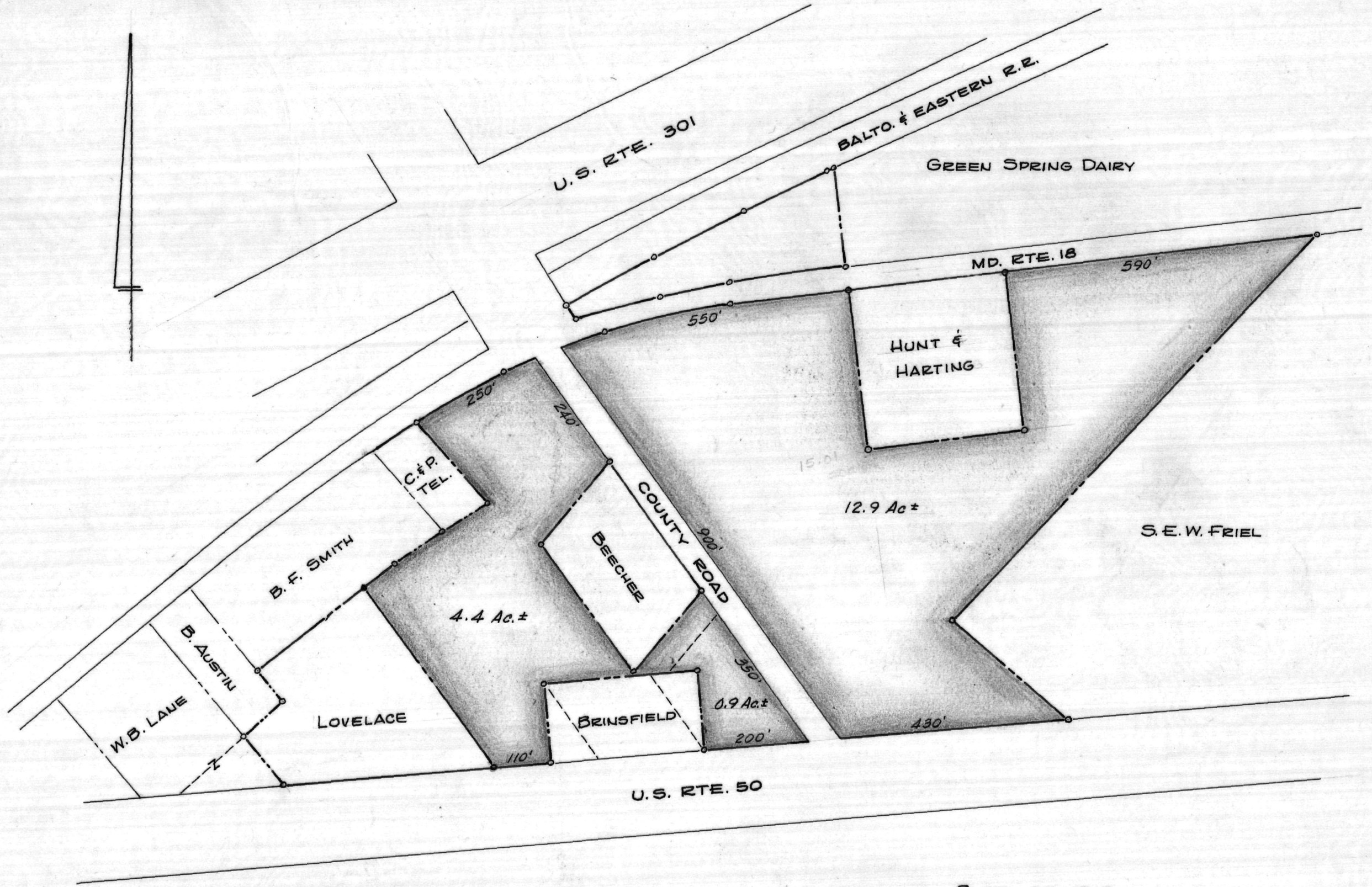


Maryland State Archives



*Note: This plat is drawn from a plat by Walter Woodford, 1954, and various deed descriptions.*

*Distances & acreages scaled*

PLAT OF THE  
 MIDA, INC. LANDS  
 5<sup>TH</sup> DISTRICT, QUEEN ANNES CO., MD.  
 Scale 1"=200' Dec. 1967; Additions Jan. 1972.  
 William R. Nuttle, Reg. Surveyor  
 Chestertown, Md.

MSA SC 5593-7-382