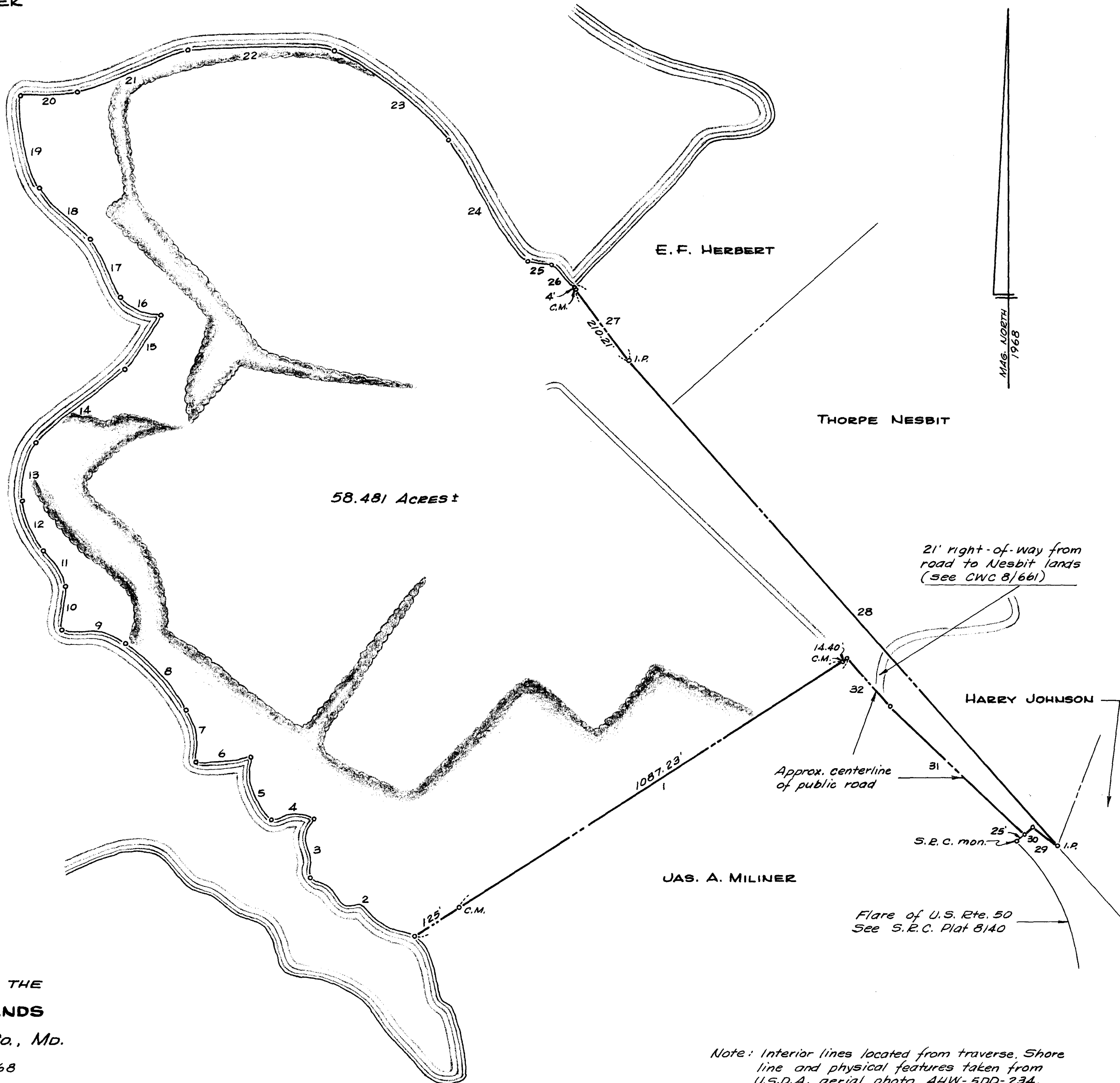


WINCHESTER CREEK

NO.	BEARING	DIST.
1	S 57° 15' 00" W	1226.63'
2	N 61° 13' 10" W	292.04'
3	N 03° 14' 50" E	141.23'
4	S 89° 26' 00" W	101.00'
5	N 18° 05' 30" W	157.80'
6	S 84° 12' 00" W	128.66'
7	N 11° 24' 00" W	126.50'
8	N 42° 21' 50" W	215.19'
9	N 77° 58' 50" W	158.47'
10	N 05° 26' 30" E	105.48'
11	N 32° 54' 20" W	101.24'
12	N 22° 37' 10" W	130.00'
13	N 14° 02' 10" E	144.31'
14	N 50° 11' 40" E	273.36'
15	N 33° 05' 10" E	157.54'
16	N 65° 55' 30" W	102.96'
17	N 28° 31' 20" W	157.06'
18	N 43° 35' 30" W	172.59'
19	N 11° 18' 40" W	224.36'
20	N 85° 44' 00" E	134.37'
21	N 69° 19' 30" E	283.24'
22	S 89° 40' 20" E	351.01'
23	S 51° 52' 50" E	348.28'
24	S 33° 00' 10" E	346.99'
25	S 82° 28' 30" E	53.46'
26	S 46° 53' 50" E	89.31'
27	S 36° 50' 00" E	214.21'
28	S 41° 12' 20" E	1549.32'
29	N 53° 16' 10" W	75.66'
30	S 47° 17' 00" W	25.00'
31	N 46° 06' 20" W	445.34'
32	N 41° 44' 00" W	152.80'



PLAT OF A SURVEY OF THE
 HOWARD M. HISSEY LANDS
 5TH DISTRICT, QUEEN ANNES Co., MD.

Scale 1" = 200' May 1968

William R. Nuttle, Reg. Surveyor
 Chestertown, Md.

Note: Interior lines located from traverse. Shore line and physical features taken from U.S.D.A. aerial photo AHW-5DD-234. Water courses computed from coordinates scaled from photo.

C.M. = concrete monument
 I.P. = iron pipe

MAG. NO. 1088
 1968

