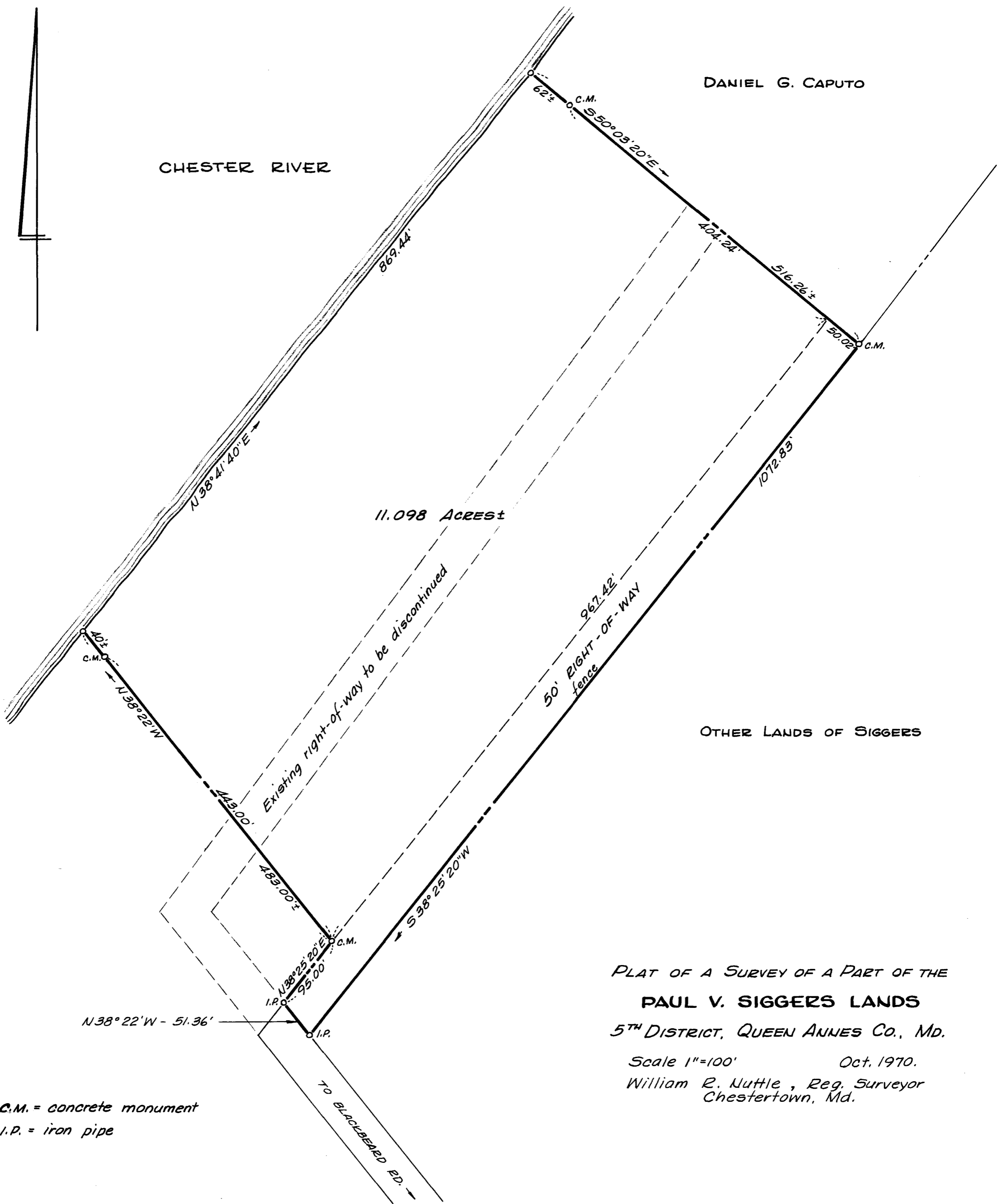


DANIEL G. CAPUTO

CHESTER RIVER



OTHER LANDS OF SIGGERS

PLAT OF A SURVEY OF A PART OF THE  
PAUL V. SIGGERS LANDS  
5<sup>TH</sup> DISTRICT, QUEEN ANNES CO., MD.

Scale 1"=100'

Oct. 1970.

William R. Nuttle, Reg. Surveyor  
Chestertown, Md.

C.M. = concrete monument  
I.P. = iron pipe

TO BLACKBEARD ED. →

MSA SC 5593-7-365

