

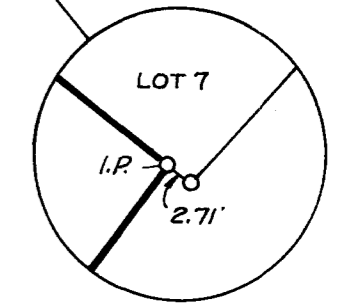
PLAT OF A SURVEY OF PART OF THE
KURT F. ROSER LANDS
 5TH DISTRICT, QUEEN ANNES CO., MD.

Scale 1"=100' Dec. 1982.

William R. Nuttle, Reg. Surveyor
 Chestertown, Md.

for Robert E. Collier

I.P. = iron pipe
 C.M. = concrete monument



MSA SC 5593-7-360

