

CHESAPEAKE COLLEGE

College lands acquired from Scott & Kendall

Scale 1" = 300'

JOHN F. HEATH

MD. RTE. 404

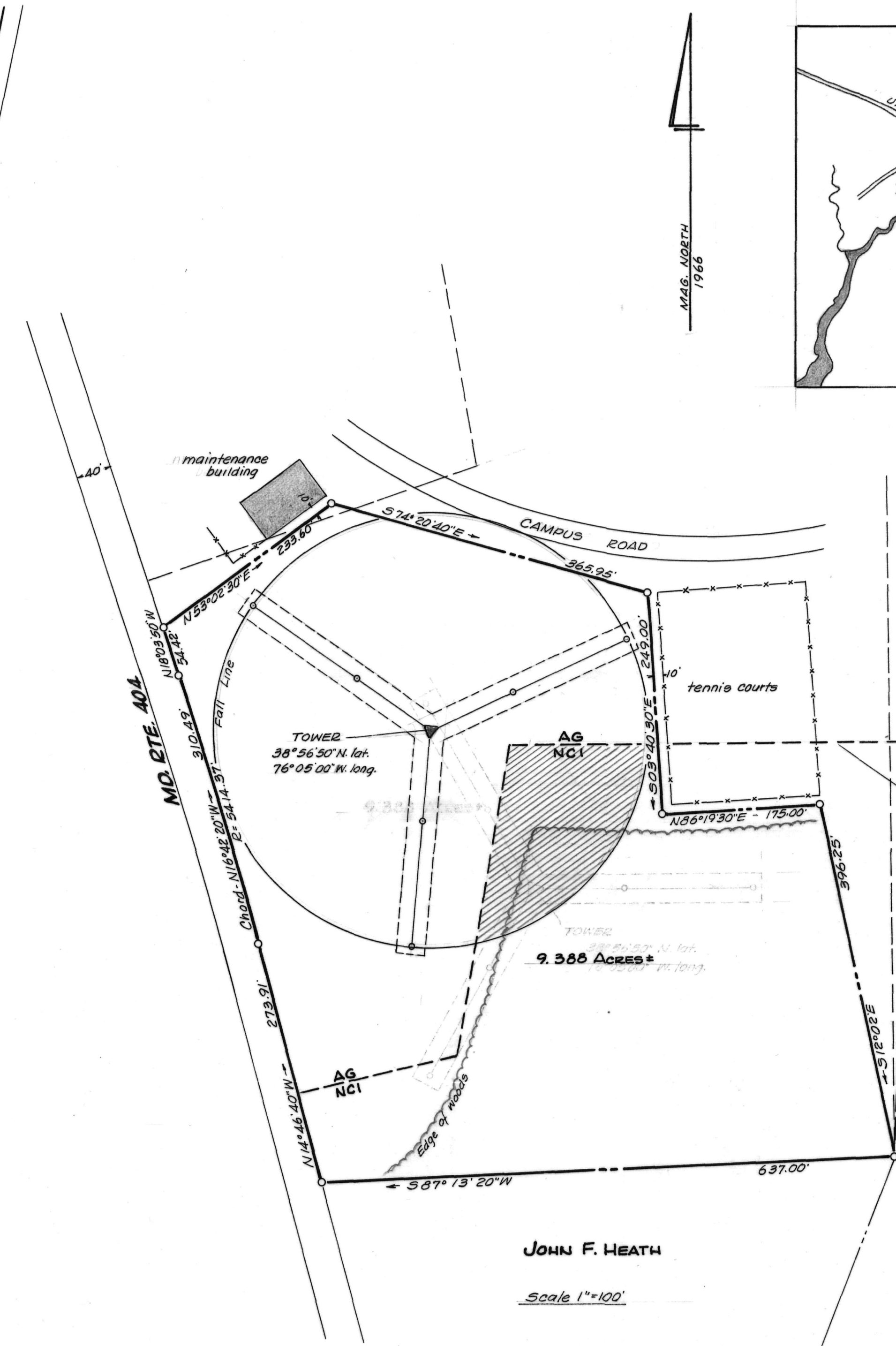
MD. RTE. 662

PROPOSED TOWER SITE  
CHESAPEAKE COLLEGE CAMPUS

5<sup>TH</sup> DISTRICT, QUEEN ANNES Co., MD.

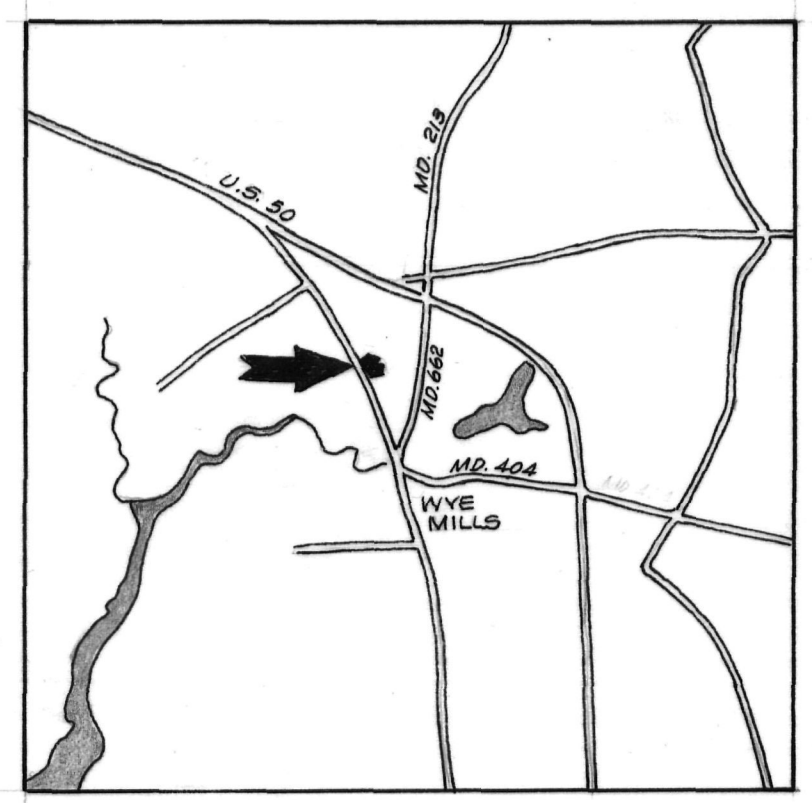
Scale as shown Nov. 1987

William R. Nuttle, Reg. Surveyor  
Chestertown, Md.



JOHN F. HEATH

Scale 1" = 100'



MAG. NORTH  
1966

Zoning district lines scaled from zoning map.

