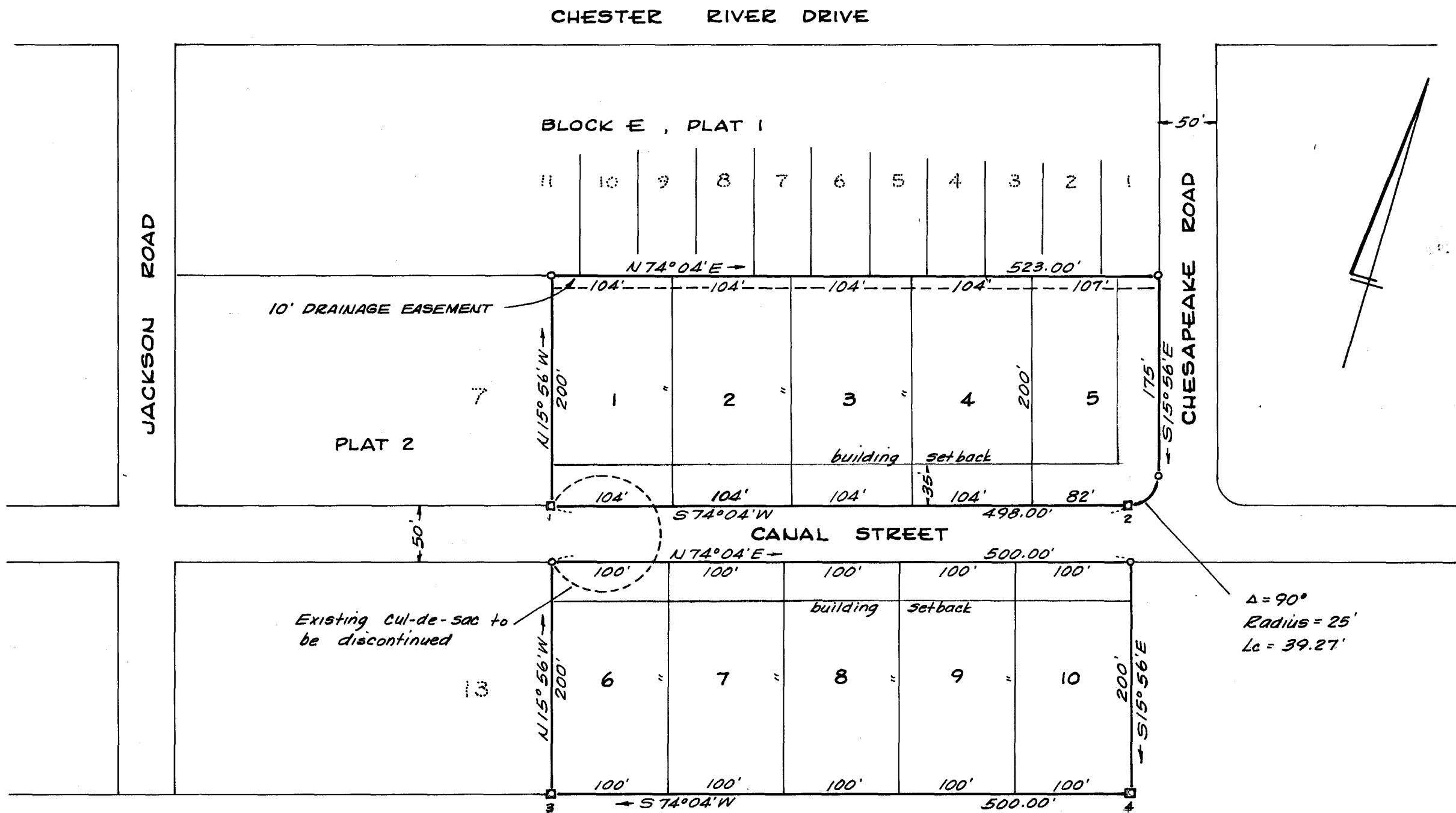


COORDINATES

NO.	NORTH	WEST
1	1550.87	1606.66
2	1687.58	1127.79
3	1310.47	1538.03
4	1447.73	1057.24

Approved by the Queen Annes County Health Dept.

Approved by the Queen Annes County Planning & Zoning Comm.



This is to certify that this plat represents a survey by me and that the monuments shown actually exist in accordance with Section 60, Article 17, Annotated Code of Maryland.

William R. Nuttle
Surveyor

Owner



PLAT THREE

CHESTER RIVER BEACH

5TH DISTRICT, QUEEN ANNES CO., MD.

Scale 1"=100'

June 1969.

William R. Nuttle, Reg. Surveyor
Chestertown, Md.

MSA SC 5593-7-357