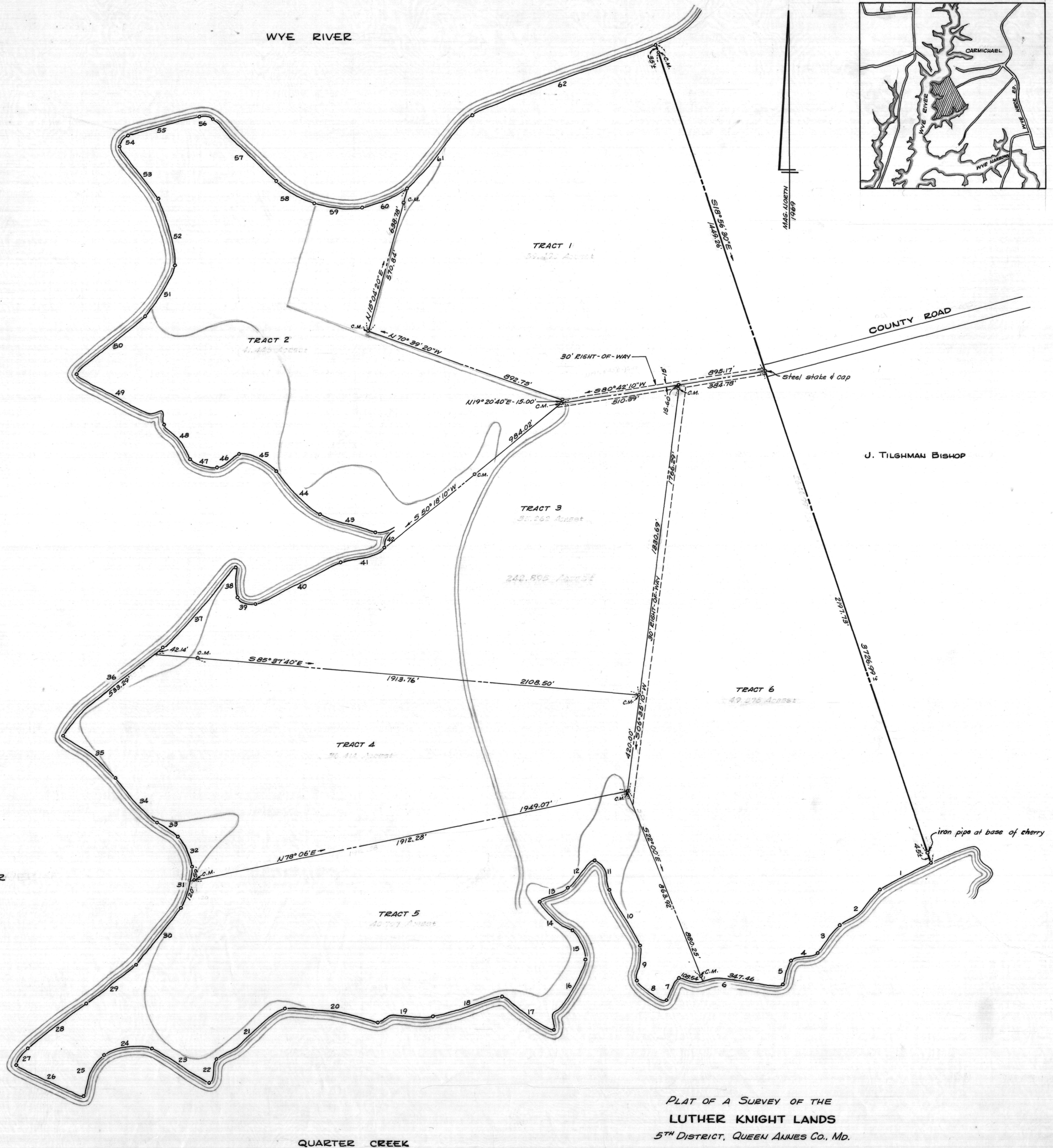


WATER COURSES

NO.	BEARING	DIST.
1	S61°59'50"W	252.10'
2	S48°31'40"W	228.80'
3	S37°10'00"W	152.71'
4	S72°11'30"W	119.34'
5	S18°19'50"W	106.37'
6	N87°06'10"W	456.10'
7	S27°44'00"W	107.62'
8	N57°43'50"W	155.19'
9	N03°24'30"E	153.95'
10	N28°40'00"W	274.42'
11	N26°35'20"W	141.05'
12	S44°49'00"W	166.26'
13	S62°45'10"W	131.06'
14	S48°29'30"E	186.92'
15	S23°58'20"E	142.22'
16	S23°29'30"W	320.48'
17	N58°02'40"W	269.99'
18	S73°20'50"W	314.02'
19	S83°18'40"W	237.52'
20	N81°27'30"W	410.51'
21	S52°37'00"W	367.65'
22	S16°55'20"W	104.95'
23	N59°39'10"W	289.37'
24	S82°03'30"W	206.57'
25	S26°34'40"W	199.95'
26	N65°12'30"W	322.15'
27	N33°30'50"E	89.73'
28	N52°55'30"E	316.05'
29	N52°04'10"E	272.61'
30	N38°05'50"E	313.73'
31	N12°18'50"E	179.00'
32	N23°46'00"W	148.99'
33	N58°09'10"W	107.54'
34	N42°50'40"W	260.61'
35	N51°26'00"W	290.97'
36	N48°02'00"E	375.43'
37	N42°12'30"E	469.25'
38	S05°20'50"E	128.64'
39	S69°09'40"E	79.46'
40	N64°09'40"E	414.92'
41	N70°57'20"E	200.63'
42	N33°52'10"W	82.86'
43	N72°57'00"W	254.15'
44	N45°07'20"W	264.61'
45	N65°12'10"W	177.28'
46	S57°15'30"W	110.46'
47	N73°19'50"W	122.82'
48	N37°12'20"W	189.40'
49	N60°09'40"W	437.09'
50	N50°02'30"E	390.71'
51	N30°04'20"E	256.21'
52	N14°31'20"W	297.85'
53	N36°32'00"W	284.77'
54	N40°43'10"E	60.29'
55	N74°54'30"E	314.70'
56	S79°41'10"E	62.61'
57	S45°58'10"E	381.79'
58	S59°14'30"E	189.36'
59	S84°25'20"E	209.00'
60	N66°42'40"E	211.00'
61	N41°34'20"E	421.28'
62	N68°51'50"E	850.56'



Note: Woods & marsh lines and lanes taken from aerial photo AHW-500-183, 5/2/64, and are for picture purposes only.

C.M. = Concrete monument

PLAT OF A SURVEY OF THE
LUTHER KNIGHT LANDS
 5TH DISTRICT, QUEEN ANNES CO., MD.
 Scale 1"=200' July 1969
 William R. Nuttle, Reg. Surveyor
 Chestertown, Md.

MSA SC 5593-7-351