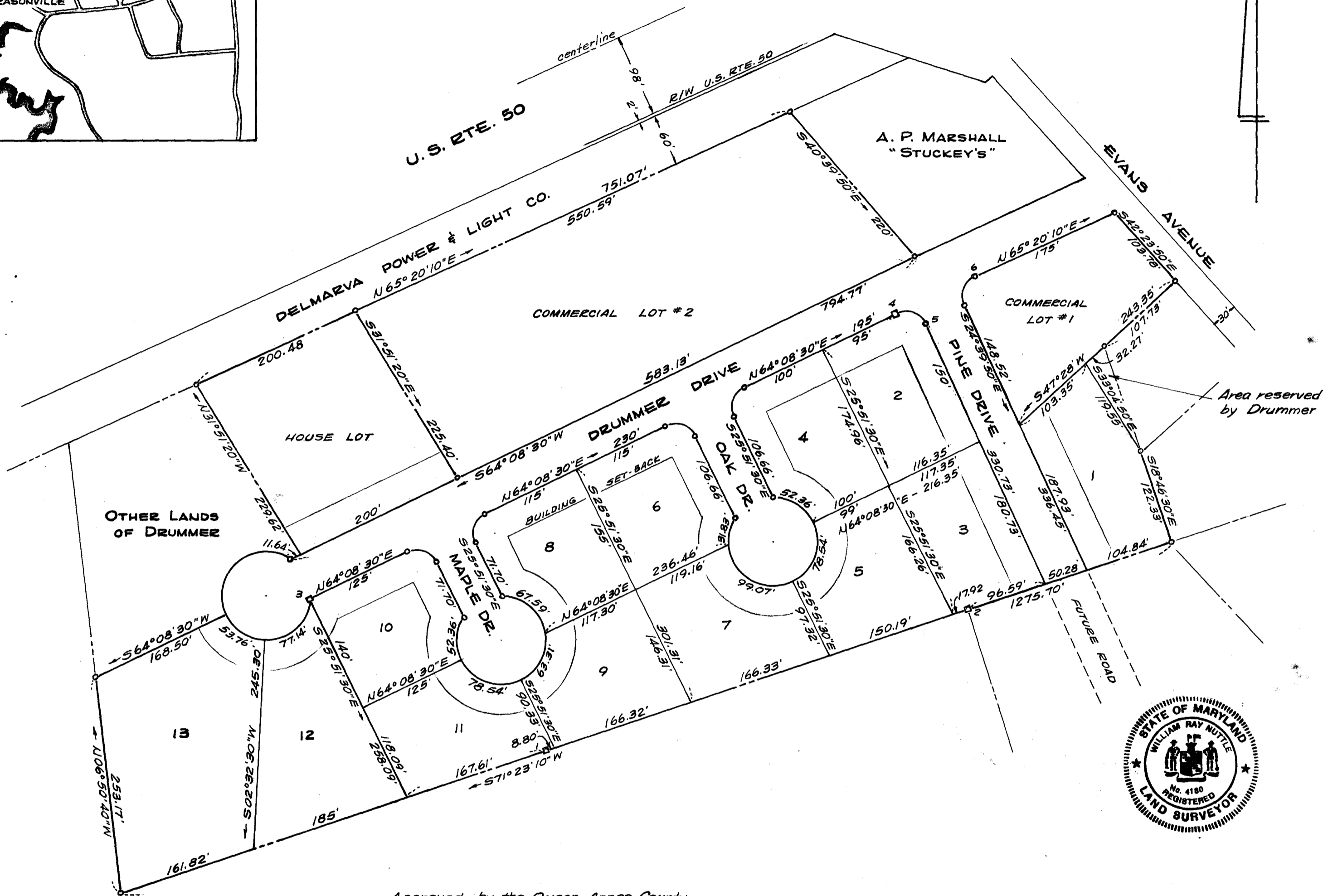


COORDINATES

NO.	NORTH	EAST
1	4213.50	4769.26
2	4376.15	5252.17
3	4392.25	4497.85
4	4719.36	5172.75
5	4707.54	5205.68
6	4761.93	5263.24

CURVE DATA

NO	DEF. ANGLE	RADIUS	TANGENT	ARC LENGTH
4-5	91° 11' 40"	24.48	25.00'	38.96'
Cul-de-sacs	300° 00' 00"	50.00'	—	261.80'
all others	90° 00' 00"	25.00'	25.00'	39.27'



Approved by the Queen Annes County Health Department.

Approved by the Queen Annes County Planning & Zoning Commission

SUBDIVISION PLAT
WINCHESTER ESTATES
 GRASONVILLE, QUEEN ANNES CO., MD.
 Scale 1"=100' Aug. 1968
 William R. Nuttle, Reg. Surveyor
 Chestertown, Md.

This is to certify that this plat represents a survey by me and that the monuments shown actually exist in accordance with Section 60, Article 17, Annotated Code of Md.

William R. Nuttle #4180

Owner

Note: All roads 50' wide
 Building set-back - 35'

