

SECTION I, WINCHESTER ESTATES

CURVE DATA

NO.	DEF. ANGLE	RADIUS	TANGENT	ARC LENGTH
14-15	08°00'00"	639.24'	44.70'	89.25'
18-19	"	589.24'	41.20'	82.27'
16-17	300°00'00"	50.00'	—	261.80'

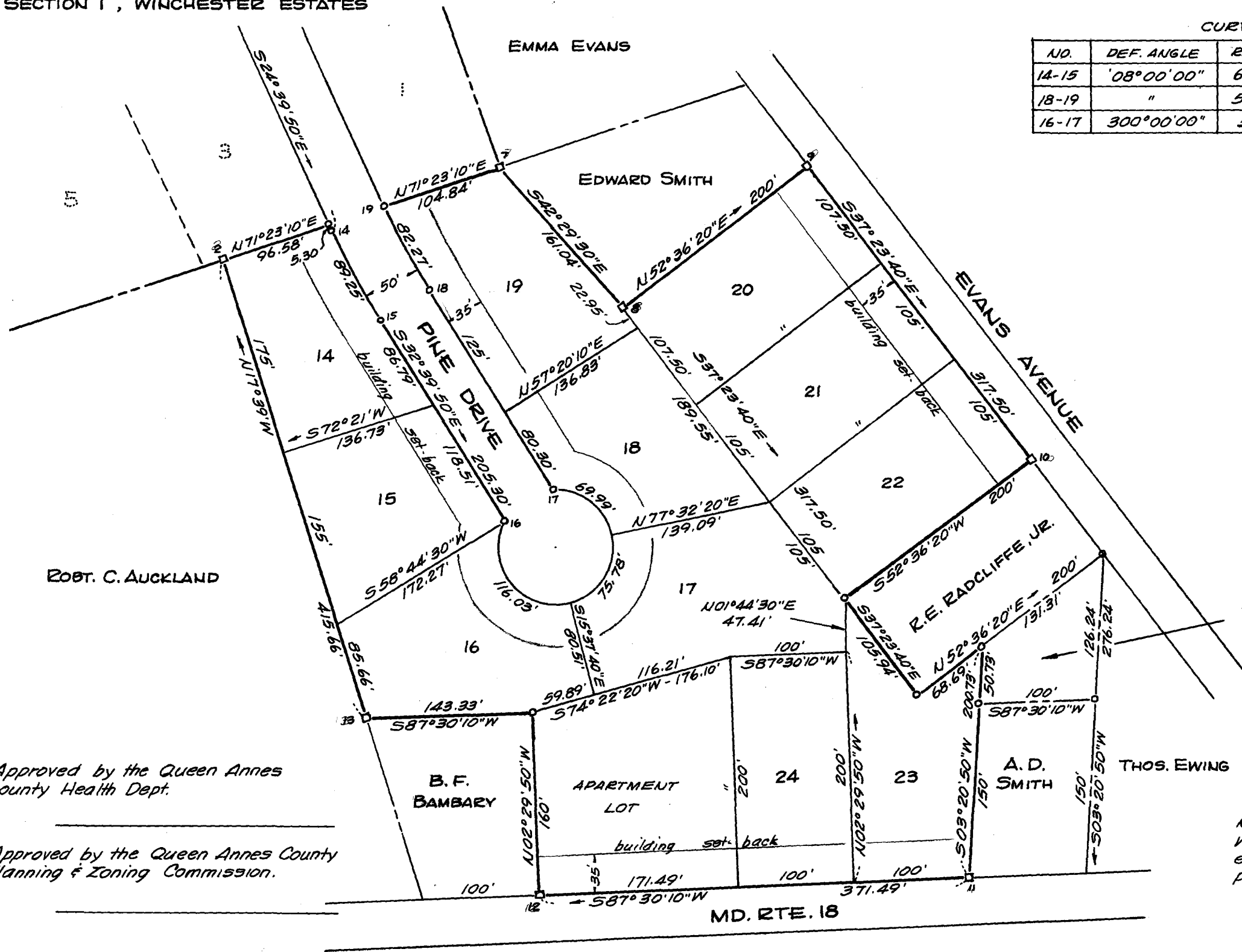
COORDINATES

NO.	NORTH	EAST
2	4376.15'	5252.17'
7	4456.49'	5490.71'
8	4337.74'	5599.49'
9	4459.21'	5758.38'
10	4206.96'	5951.20'
11	3842.66'	5899.50'
12	3826.46'	5528.35'
13	3980.06'	5378.19'

All above points marked by concrete monuments.

AREA RETAINED BY DRUMMER

Note: Evans Avenue and Md. Rte. 18 were established from existing property corners and not from the present paving.



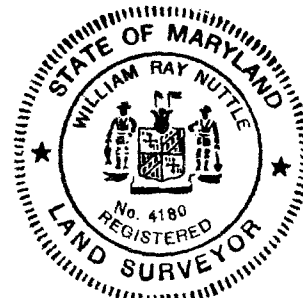
Approved by the Queen Annes County Health Dept.

Approved by the Queen Annes County Planning & Zoning Commission.

This is to certify that this plat represents a survey by me and that the monuments shown actually exist in accordance with Section 60, Article 17, Annotated Code of Maryland

William R. Nuttle
Surveyor

Owner



SECTION TWO

WINCHESTER ESTATES

GRASONVILLE, QUEEN ANNES CO., MD.

Scale 1"=100' Dec. 1968

William R. Nuttle, Reg. Surveyor
Chestertown, Md.

