

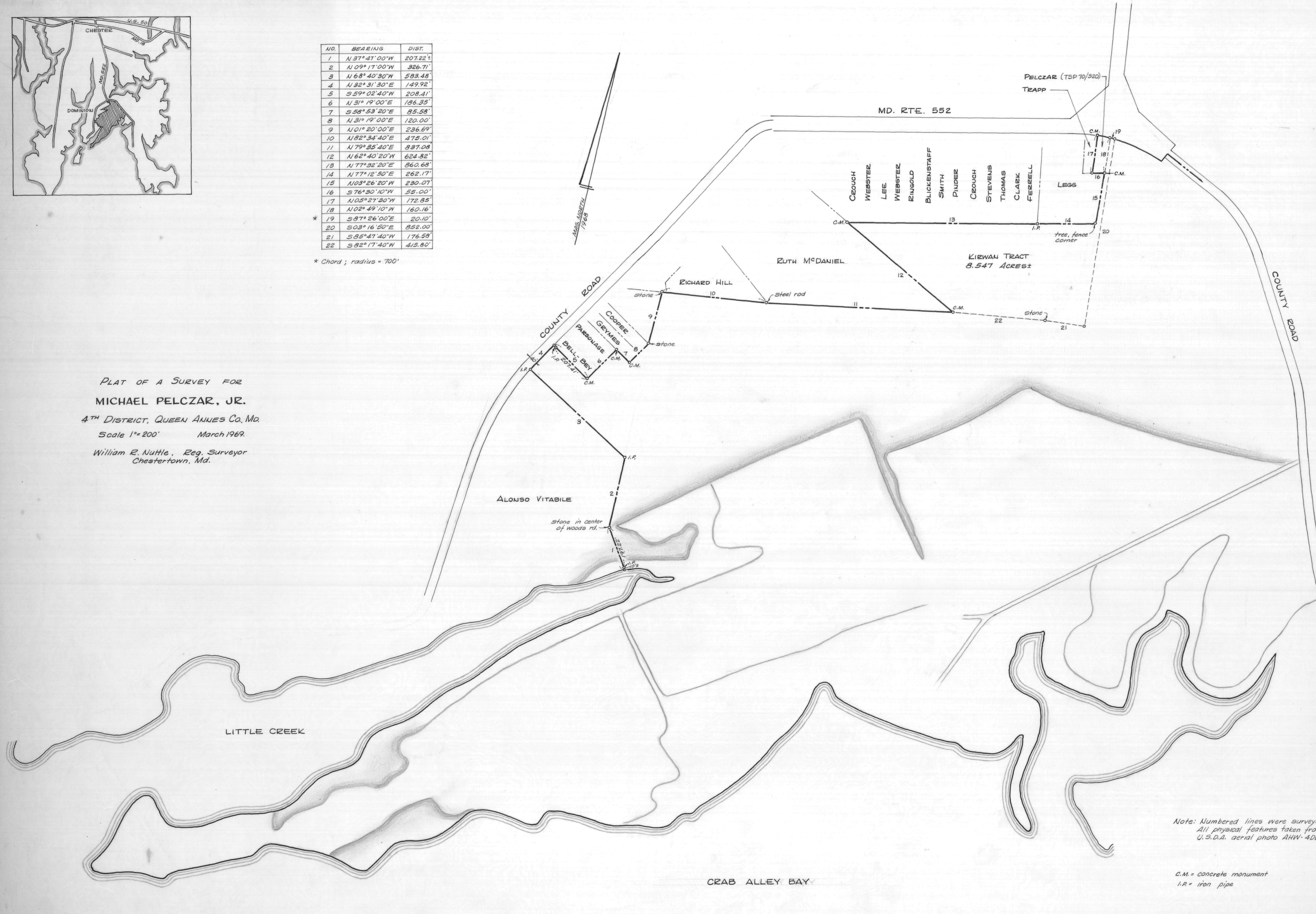
NO.	BEARING	DIST.
1	N 37° 41' 00" W	207.22'
2	N 09° 17' 00" W	326.71'
3	N 68° 40' 30" W	583.48'
4	N 32° 31' 30" E	149.92'
5	S 59° 02' 40" W	208.41'
6	N 31° 19' 00" E	186.35'
7	S 58° 53' 20" E	85.58'
8	N 31° 19' 00" E	120.00'
9	N 01° 20' 00" E	236.69'
10	N 82° 34' 40" E	475.01'
11	N 79° 35' 40" E	887.08'
12	N 62° 40' 20" W	624.82'
13	N 77° 32' 20" E	860.68'
14	N 77° 12' 50" E	262.17'
15	N 03° 26' 20" W	230.07'
16	S 76° 30' 10" W	55.00'
17	N 05° 27' 30" W	172.85'
18	N 02° 49' 10" W	160.16'
* 19	S 87° 26' 00" E	20.10'
20	S 03° 16' 50" E	852.00'
21	S 85° 47' 40" W	176.58'
22	S 82° 17' 40" W	415.80'

* Chord ; radius = 700'

PLAT OF A SURVEY FOR
MICHAEL PELCZAR, JR.

4TH DISTRICT, QUEEN ANNES CO., MD.
Scale 1" = 200' March 1969.

William R. Nuttle, Reg. Surveyor
Chestertown, Md.



Note: Numbered lines were surveyed.
All physical features taken from
U.S.D.A. aerial photo AHW-ADD-192.

C.M. = concrete monument
I.P. = iron pipe

