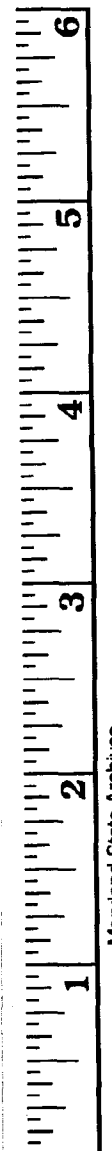
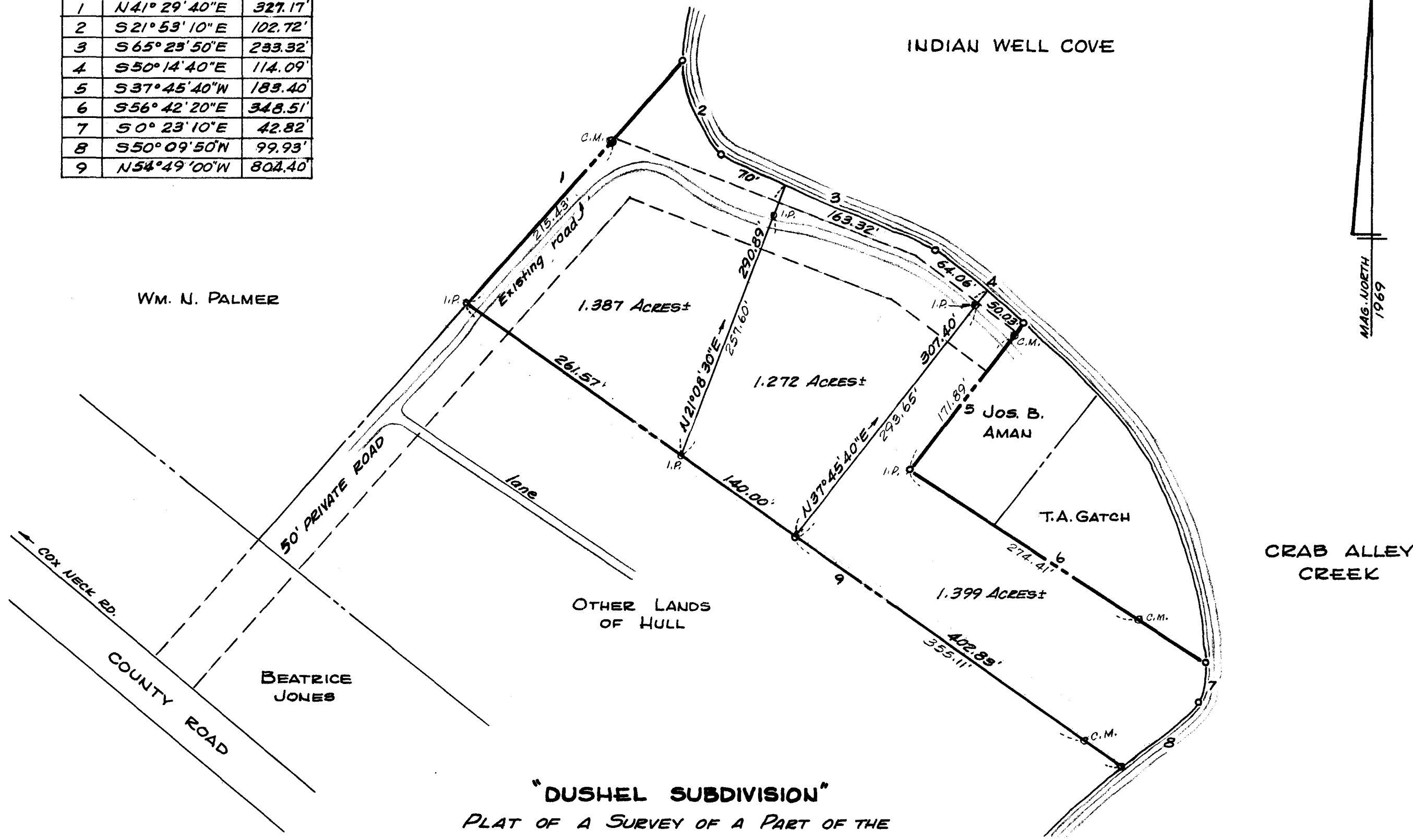


NO.	BEARING	DIST.
1	N41° 29' 40" E	327.17'
2	S21° 53' 10" E	102.72'
3	S65° 25' 50" E	233.32'
4	S50° 14' 40" E	114.09'
5	S37° 45' 40" W	183.40'
6	S56° 42' 20" E	348.51'
7	S0° 23' 10" E	42.82'
8	S50° 09' 50" W	99.93'
9	N54° 49' 00" W	804.40'



Maryland State Archives



"DUSHEL SUBDIVISION"
 PLAT OF A SURVEY OF A PART OF THE
EDWARD W. S. HULL LANDS
 4TH DISTRICT, QUEEN ANNES CO., MD.
 Scale 1"=100' Sept. 1969.
 Revised Oct. 1969.
 William E. Nuttle, Reg. Surveyor
 Chestertown, Md.

C.M. = Concrete monument
 I.P. = iron pipe