

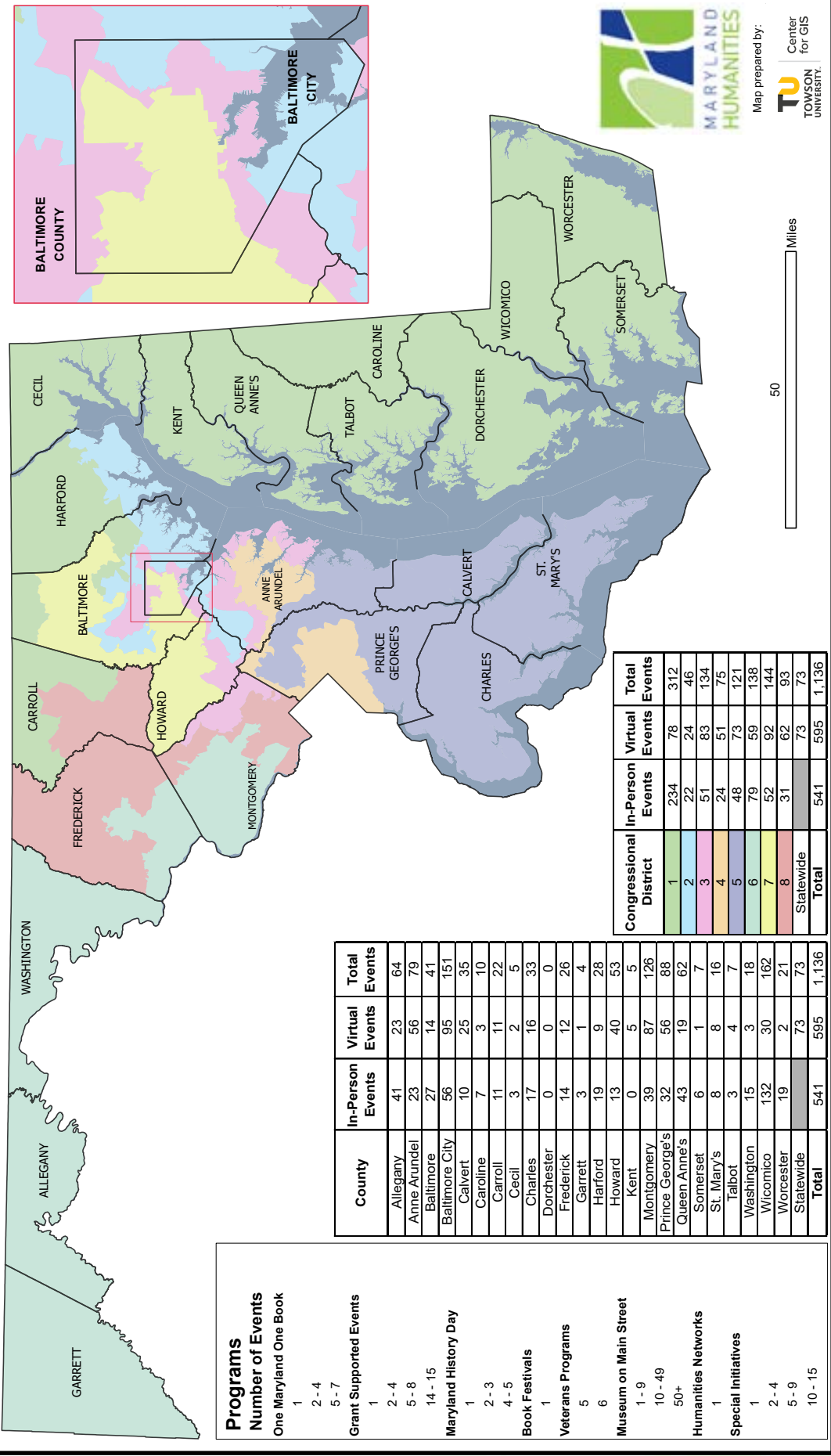


MARYLAND  
HUMANITIES



ANNUAL  
REPORT  
2021

# Maryland Humanities Program Activities | November 2020 — October 2021





## MISSION

Maryland Humanities creates and supports bold experiences that explore and elevate our shared stories to connect people, enhance lives, and enrich communities. Through collaborations with local partners in every county and Baltimore City, we offer the humanities not only for their inherent pleasure, but for their tremendous power to transform our thinking and feeling. Thank you for joining us, and we hope our work provided you great inspiration over the past months. We can't do this without you!



## WELCOME

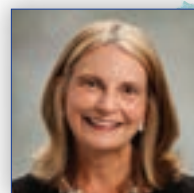
2021 was meant to be the year we returned to normal. Instead, Maryland Humanities, like all of you, navigated a year of new challenges and uncertainties. Last year, combined with lessons learned in 2020, solidified some important points to our organization. We need now, more than ever, to face the challenges of our time with the power of the humanities.

To that end, we took some bold steps in thinking about Maryland Humanities' future and impact. We adopted a new strategic plan, *Humanities Now*, which focuses our efforts on operationalizing racial equity, lifting up the humanities sector in Maryland, and utilizing the humanities to address serious issues in our communities.

We laid the groundwork to switch to general operating support with our grants in 2022, leading the way as the first statewide humanities council to switch entirely to this type of urgently needed support.

We continued to offer quality programs throughout the state—sometimes in person, sometimes hybrid, and sometimes in our zoom squares.

Throughout it all, our supporters stood by us. Thank you so much. You made our year possible.



Mary Hastler  
Chair, Board of Directors



Lindsey Baker  
Executive Director

# YEAR AT A GLANCE

Thanks to your tremendous generosity — our supporters, partners, and friends — we are able to offer substantive, impactful humanities programs throughout Maryland.

Here's a snapshot of our Fiscal Year 2021  
(November 2020–October 2021).

**Voices and Votes: Democracy in America, our Museum on Main Street**, exhibit toured the state from April 2021 to January 2022 and was hosted at the Allegany Museum, Queen Anne's County Historical Society at Kennard African American Cultural Heritage Center, Edward H. Nabb Research Center for Delmarva History and Culture, Sandy Spring Museum, and Baltimore County Historical Society.

**Maryland History Day successfully executed our second virtual contest.** The program included virtual museum and campus tours, a student showcase, and culminated in a virtual award ceremony. In addition, Maryland History Day staff hosted "Community Conversations" with MHD teachers, district coordinators, and other educators to talk through culturally responsive projects as well as equity and inclusion within the program.

**One Maryland One Book concluded the 2021 Virtual Author Tour on October 6, 2021.** Audiences were delighted by Ross Gay during the six stops of the tour. Preliminary attendance numbers from the live events (700+), coupled with views of the tour stop video recordings within the first 24 hours of each event (200+), indicate that tour attendance/engagement remained strong and was only slightly lower than the 2020 tour.

**Maryland Humanities was awarded a grant from The Library of Congress Teaching with Primary Sources Program (TPS)** that, in partnership with MPT, MSDE, and MDTESOL, will fund the creation of a primary source-based, project-based learning curriculum for English learners (ELs) in order to increase diversity, equity, and accessibility within the Maryland History Day program and Thinkport Inquiry Kit resources.

**Maryland Humanities' Voices and Votes Electoral Engagement Project was funded through the national "Why it Matters: Civic and Electoral Participation" initiative, administered by the Federation of State Humanities Councils and funded by Andrew W. Mellon Foundation.** As a part of this project, Maryland Humanities funded over \$20,000 in Voices and Votes Electoral Engagement Support Grants to support projects engaging and benefitting Marylanders, on such topics as voting during a pandemic, suffrage, the power of protest, voting rights, voter suppression, contested elections, ideological polarization, social media and democracy, rural/urban divide in voting, the electoral college, and voter apathy. In addition, Maryland Humanities' programs [Museum on Main Street](#) and [Maryland Voices](#), collaborated with [The Peale](#) on a story collection project highlighting new voters. These stories were shared through the Peale's "Be Here Stories" app and at a listening station that became part of the *Voices and Votes* exhibition. As the final part of the grant project, Maryland Humanities hosted best-selling authors Kimberly Jones and Gilly Segal for a virtual event to discuss *I'm Not Dying With You Tonight*, the recent resurgence of our country's reckoning with racial inequity, and reaching beyond platitudes to enact change.

## LOOKING AHEAD

### Humanities Now

We enthusiastically move forward with *Humanities Now*, our Strategic Plan for 2022–2025. The plan positions us to deepen support for humanities organizations in Maryland by serving as a collaborator, nexus, and convener. We will use the humanities as a lens to explore racial justice, challenges to democracy, climate change, and more, conveying the relevance of the humanities to the current moment. *Humanities Now* includes a reframed mission and values. Our new mission is as follows: Maryland Humanities creates and supports bold experiences that explore and elevate our shared stories to connect people, enhance lives, and enrich communities.

### New Programming for English Learners

We created a collection of Maryland History Day for English Learners teaching materials—funded by Library of Congress' Teaching with Primary Sources Program. We designed these lesson plans and worksheets for educators to teach English learners primary source research. Resources also includes the creation of 16 new Inquiry Kits, building on our previous work with the 200 history Inquiry Kits. The funding also supports professional development resources for teachers.

### Towards a More Perfect Union

Towards A More Perfect Union, which we announced last year, is our plan to create opportunities for Marylanders to reflect on our shared history, the way in which our democracy works, and their role within it. This initiative is made possible with special funding from the National Endowment for the Humanities. We have two focus areas: 1) creating opportunities for statewide professional development among nonprofit professionals and educators; and 2) providing resources to schools seeking support. Programming is slated to begin in September 2022.

### Strengthening the Humanities Investment in Nonprofits for Equity (SHINE) Grants

We will award 50 humanities nonprofits in Maryland \$10,000 in general operating funds in November 2022. We accepted applications for Strengthening the Humanities Investment in Nonprofits for Equity (SHINE) Grants August 18–September 15. These grants—funded by the State of Maryland via the Maryland Historical Trust—provide full flexibility to nonprofits, allowing them to determine where funds are most needed.

# WHO WE ARE

## STAFF

**Isabella Altherr**  
Program Assistant  
Maryland History Day & Maryland Voices

**Lia Atanat**  
Maryland History Day Outreach & Professional Development Coordinator

**Lindsey Baker**  
Executive Director

**Stephanie Boyle**  
Program Officer  
Maryland History Day & Maryland Voices

**Alexandra Cenatus**  
Director of Programs

**Aditya Desai**  
Program Officer  
Literature

**Eden Etzel**  
Program Assistant  
Maryland Center for the Book

**Robert Forloney**  
Program Manager  
Museums on Main Street  
(Consultant through 10/31/22)

**Marilyn Hatza**  
Director,  
Grants & Community Outreach

**Kelly King**  
Grants Specialist

**Emmie Michalkiewicz**  
Maryland History Day Outreach & Professional Development Assistant

**Camilla Sandoval**  
Program Coordinator,  
Grants & Community Engagement

**Sarah Weissman**  
Communications Specialist

**Lou Williams**  
Operations Manager

## BOARD OF DIRECTORS

**Mary Hastler\***  
Chair  
Harford County

**Keith Stone**  
Vice Chair/Grants  
Committee Chair  
Baltimore City

**Dr. Ron Nowaczyk**  
Treasurer/Finance  
Committee Chair  
Allegany County

**Carmel Roques**  
Secretary  
Howard County

**Julie Madden\***  
Government Liaison  
Howard County

**Alicia Jones McLeod**  
Chair Elect/Racial Equity  
Work Group Chair  
Baltimore County

**Kendra Brown**  
Prince George's County

**Mary Mateer Cummings\***  
Garrett County

**Chanel Compton**  
Baltimore City

**Mark Irwin**  
Montgomery County

**The Honorable Pete Leshar\***  
Program & Communications  
Committee Chair  
Talbot County

**Heather Mitchell**  
Howard County

**Dr. Kimberly Moffitt**  
Baltimore County

**Dr. Randy Ontiveros**  
Prince George's County

**Dr. Maarten Pereboom**  
Wicomico County

**Jeanne Pirtle**  
St. Mary's County

**Cynthia Raposo**  
Montgomery County

**Tom Riford**  
Mercersburg, PA

**Dr. Nancy Rogers**  
Montgomery County

**Jennifer Shea**  
Development & Governance  
Committee Chair  
Talbot County

**Saima Sitwat**  
Baltimore City

**Guffrie Smith**  
Calvert County

**Sharon Whitney**  
Anne Arundel County

**Allyson Black Woodson**  
Anne Arundel County

\*Gubernatorial Appointee

# FINANCIALS

## REVENUES

Total \$3,095,706

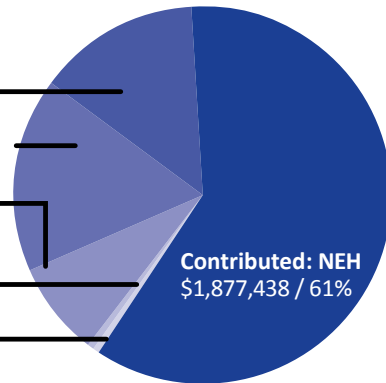
**Contributed: Other Federal**  
\$436,834 / 14%

**Contributed: State of Maryland**  
\$514,134 / 17%

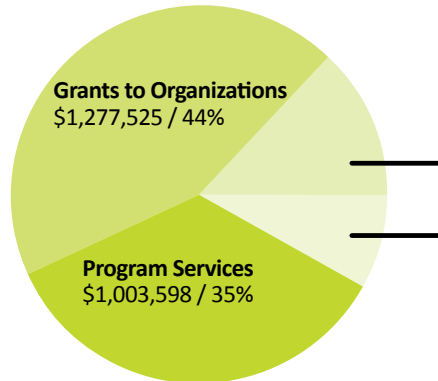
**Contributed: Private & Special Events**  
\$244,707 / 8%

**In-Kind Services**  
\$12,400 / 0%

**Other Income & Interest**  
\$10,193 / 0%



Change in Net Assets \$219,836



## EXPENSES

Total \$2,875,870

**Management**  
\$360,966 / 13%

**Fundraising**  
\$233,781 / 8%

## STATEMENTS OF FINANCIAL POSITION: FY21

### Assets

Cash & Investments	\$ 1,414,422
Receivables	\$ 1,157,287
Prepaid Expenses	\$ 14,962
Property & Equipment	\$ 15,827
<b>Total</b>	<b>\$ 2,602,498</b>

### Liabilities and Fund Balances

#### Liabilities

Accounts Payable & Accrued Expenses	\$ 112,442
Regrants Payable	\$ 910,000
Capital Lease	\$ 15,600
Loan Payable	\$ 181,622
<b>Subtotal</b>	<b>\$ 1,219,664</b>

#### Fund Balances

Net Assets: Unrestricted	\$ 1,132,935
Net Assets: With Restrictions	\$ 249,899
<b>Subtotal</b>	<b>\$ 1,382,834</b>

**Total \$ 2,602,498**

# GRANTS

Maryland Humanities supports innovative humanities projects with grants of up to \$10,000. During Fiscal Year 2021, we awarded 26 grants totaling \$176,133. Recipient organizations were based in eight Maryland counties and Baltimore City, plus one out-of-state recipient.

## Anne Arundel County

**Banneker-Douglass Museum Foundation**  
Anti-Racism Trainings  
\$1,200

## Baltimore City

### Afro Charities

Re-Reading the News  
\$1,200

### Baltimore Architecture Foundation

2021 Spring Lecture Series: Architecture & Culture  
\$1,100

### CHARM: Voices of Baltimore

CHARM: Voices of Baltimore Youth  
\$10,000

### CityLit Project

A Series of Master Classes, Craft Talks &  
Panel Discussion/2021 CityLit Festival  
\$10,000

### Civic Works

Telling the Story of Enslaved People at  
Baltimore's Clifton Mansion  
\$10,000

### Maryland Center for History and Culture

I'll Overcome Someday, a Maryland  
Civil Rights Community Engagement Initiative  
\$7,600

### Pride of Baltimore

A Deeper Dive: Pride of Baltimore's  
2021/2022 Speaker Series  
\$9,500

## Caroline County

### Adkins Arboretum

Adkins Arboretum Indigenous Perspectives:  
Native Peoples—Native Plants  
\$10,000

### Minary's Dream Alliance

History of the Shantytowns on Kent Narrows  
\$10,000

## Frederick County

### African-American Resources

**Cultural Heritage Society**  
Produce Digital Content to Expand Programming  
and Enhance Access for AARCH Audiences  
\$9,998

### Catoctin Furnace Historical Society

Braided Lives: Troublin de Water—  
Catoctin Furnace's Enslaved through  
Poetry, Song & Narrative  
\$10,000

### The Global Z Recording Project

Living and Dying with COVID-19:  
The Maryland Stories  
\$10,000

## Harford County

Susquehanna Museum of Havre de Grace  
Up the Canal: Villages and People Along the  
Susquehanna & Tidewater Canal  
\$1,200

## Montgomery County

### City of Rockville Recreation and Parks

Glenview Mansion Cultural Programs  
\$1,175

### Docs in Progress

Silver Spring Screenings and  
Community Stories Festival  
\$10,000

### InterAct Story Theatre

Wheaton InterActions:  
Community Stories in the Time of Covid  
\$1,200

### Main Street Connect

Conversations Matter  
\$8,470

## Sugarland Ethno-History Project

The Sugarland Virtual Historical Archaeology  
Exhibit, Teacher Training, and  
Curriculum Project  
\$9,890

## Prince George's County

### EducArte

Brazilian Choro Music: The Afro-Brazilian Origins  
of Samba and Bossa Nova  
\$1,200

### Joe's Movement Emporium

Commissioning Project: Freedom Story  
\$10,000

### The Literacy Project

TEACH  
\$10,000

### Prince George's African American Museum and Cultural Center

Remembering Our Roots: Civic Activism for Youth  
\$1,200

## Saint Mary's County

### Historic Sotterley

Transcending Barriers to Common Ground  
\$10,000

## Talbot County

### Chesapeake Film Festival

Chesapeake Film Festival: Great Stories Begin Here  
\$10,000

## Out of State

### Shepherd University

The Maryland Loyalism Project, Phase 2  
\$1,200



# SHARP RECOVERY GRANTS FUND

We were privileged to be entrusted by the US Congress and the National Endowment for the Humanities with awarding more than \$900,000 in COVID-relief funding to Maryland nonprofit organizations continuing to suffer negative impacts from the pandemic in 2021. Through the Sustaining the Humanities through the American Rescue Plan, or SHARP, we awarded 91 grants of \$10,000 to the following organizations, each with an annual operating budget of \$300,000 or less, reaching 19 counties and Baltimore City.

## Allegany County

Allegany Museum  
Cumberland Theatre  
Evergreen Heritage Center Foundation  
Frostburg Museum Association  
Historic Frostburg,  
a Maryland Main Street Community

## Anne Arundel County

Captain Avery Museum  
Chesapeake Children's Museum  
Friends of the Rising Sun Inn  
Galesville Community Center  
Lost Towns Project

## Baltimore County

Historical Society of Baltimore County  
Friends of Jerusalem Mill  
Maryland Lynching Memorial Project  
Preservation Alliance of Baltimore County  
Sisterhood Agenda  
Writing Hearts

## Baltimore City

CHARM: Voices of Baltimore Youth  
CityLit Project  
Eubie Blake National Jazz Institute and  
Cultural Center  
Maryland Women's Heritage Center  
Mid-Atlantic Regional Moving Image Archive  
Muse 360 Arts  
New Lens  
Poe Baltimore  
Raymond Banks 'A Way With Words' Foundation  
Sankofa Children's Museum of African Cultures  
Star-Spangled Banner Flag House Association  
Writers in Baltimore Schools

## Calvert County

Bayside History Museum  
Friends of Jefferson Patterson Park and Museum

## Carroll County

Downtown Sykesville Connection  
Union Mills Homestead Foundation

## Cecil County

Historical Society of Cecil County  
Womens Civic League of North East

## Charles County

Farm Heritage Conservancy  
Friends of Maxwell Hall  
Life Journeys Writers Club  
Maryland Veterans Museum at Patriot Park  
Neighborhood Creative Arts Center  
Society for the Restoration of Port Tobacco

## Dorchester County

Alpha Genesis Community  
Development Corporation  
Dorchester County Historical Society  
Groove City Black Heritage & Culture Group  
Richardson Maritime Museum

## Frederick County

African-American Resources Cultural  
and Heritage Society  
Brunswick Potomac Foundation  
Catoctin Furnace Historical Society  
Frederick County Landmarks Foundation  
Global Z Recording Project

## Garrett County

Garrett Lakes Arts Festival

## Harford County

Friends of the Concord Point Lighthouse  
Havre de Grace Colored School Museum  
and Cultural Center  
Historical Society of Harford County  
Hosanna School Museum  
Susquehanna Museum of Havre de Grace

## Kent County

Eastern Shore Heritage  
G.A.R. Post #25/Sumner Hall  
Historical Society of Kent County

## Montgomery County

Chevy Chase Historical Society  
Docs In Progress  
Menare Foundation  
Peerless Rockville  
Sugarland Ethno History Project  
Warren Historic Site Committee

## Prince George's County

Bold Beautiful Brilliant Girls  
Youth Empowerment Group  
Coalition for African Americans  
in the Performing Arts  
EducArte  
Laurel Historical Society  
National Capital Radio and Television Museum  
National Museum of Language  
Prince George's African American Museum  
and Cultural Center  
Prince George's County Historical Society

## Somerset County

Crisfield Heritage Foundation  
Somerset County Historical Society

## St. Mary's County

Friends of St. Clement's Island  
and Piney Point Museums  
St. Mary's County Historical Society

## Talbot County

Oxford Museum  
Talbot Historical Society  
Tilghman Waterman's Museum  
Water's Edge Museum

## Washington County

Boonsboro Historical Society  
Camp Ritchie Museum  
Doleman Black Heritage Museum  
Friends of Tolson's Chapel  
Hagerstown Roundhouse Museum  
Washington County Historical Society

## Worcester County

Beach to Bay Heritage Area  
Berlin Heritage Foundation  
Delmarva Discovery Center & Museum  
Friends of the Julia A. Purnell Museum  
Furnace Town Foundation



# DONORS

Thanks to our generous donors, we are able to keep hundreds of annual program activities—more than 1,100 during FY21—free and accessible to all. This list reflects gifts and pledges received between November 1, 2020 and December 31, 2021. Individual contributors to the annual fund of \$1,000 or more are members of our Leadership Circle. Please call (410) 685-4183 to notify us of any errors.

Anonymous (41)  
AB&T Telecom LLC  
Bruce Adams & Peggy Engel  
AES Corporation  
Carl & Sandra Ahlers  
Alexander C. Baer Charitable Fund  
Mary Alexander®  
Michele & Daryl Alexander®  
Chris Allan  
Thomas Altvater  
AmazonSmile Foundation  
Wanda McGee Anastasi  
Jennifer Andiorio & Matt Hohner  
Anne T. Darlington Andrews  
Laura Cohen Apelbaum  
Rhonda Oliver-Applebaum & Barry Applebaum  
Judith A. Armold  
Dr. Karen L. Arnold & Mr. Gary Arnold  
Patricia Ash<sup>#</sup>, in Honor of Alexandra Scott Fleming  
Fay Ashby  
Amy & John Atanat  
Ron Ayres & Susan Caldwell Ayres  
Natalia Bacchus  
Diana Bailey & Kit Harvel<sup>#</sup>  
Lindsey Baker  
Gosia & Todd Baker  
Baltimore County Commission on the Arts & Sciences / The Citizens of Baltimore County  
Baltimore Nonprofit Relief Fund  
Baltimore Office of Promotion & the Arts / Creative Baltimore Fund  
Bill Barry & Joan Jacobson  
Howell Baum & Madelyn Siegel  
David & Lynn Baxa  
Sean Beattie®  
Jo & Peter Beazer  
Brian & Dian Belanger  
Carl & Jane Belt  
Randi Wallenstein Benesch & Adam Benesch  
Mary Berens & Paul Feeny, in Honor of Jennifer Shea  
Amy L. Bernstein & Clifford S. Mitchell  
Mindy Lynne Berry\*~  
Barbara L. Bershon  
BGE  
Catharine F. Black  
Mary Blair & Burt Kummerow  
Marc & Leonor Blum  
Bruce & Loyce Bowen  
Robert Bowie, Jr. & Susan Chase  
Margaret Bowler  
H. E. Bowlus\*\*  
Grace Mary Brady  
Mrs. James T. Brady\*, in Memory of James T. (Jim) Brady  
Braille Enterprises, LLC  
Dr. Elaine Breslaw  
Anne Elliott Brown  
Bob & Annie Brown  
D. Bruce Brown  
Ron & Marti Brown  
Murrie Burgan  
John & Cynthia Burkert

Susan R. Buswell  
Judy Burke Bynum  
Eva Orlebeke Caldera  
Mary Mateer Callis\*  
Leslie Campbell  
Susan Fifer Canby  
Elizabeth Cannon & John Guy\*®  
Caplan Family Foundation  
Deborah Cardin  
Eleanor & Anthony Carey  
Ron Carver  
Scott E. Casper  
Adrienne Cassara  
Grace Cavalieri  
Myron & Nina Chace  
Dr. & Mrs. Charles C. Chadbourne, III, in Honor of Judy Dobbs & Maryland History Day Staff  
Wilsonia Cherry  
Chesapeake Employers' Insurance Company  
Patricia Ciricillo & David Bogen<sup>#</sup>  
Letitia Clark & Michael Campbell  
Mary C. Clawsey  
Paula Cleggett  
Jamieson & Cindy Clem  
Bonny M. Cochran  
Frona J. Cohen  
June Cohen  
Nina Cohen  
Norma & Joel Cohen  
Sean L. Coleman  
Jasper Collier®  
Columbia Gas of Maryland / NiSource Foundation  
Marge & John Combs  
Chanel Compton  
Chris Condlin & Lisa Hin<sup>#</sup>  
Judy Cooper  
Michael Cornell  
Jim & Connie Cornelsen\*  
Emily Correll  
Joan Costello  
Mary Cox & Johns Hopkins  
Sylvia Craig  
Thomas & Barbara Crain  
Patricia Crane  
Mary Ellen & Stephen Creasy  
Dr. & Mrs. Thomas Cripps  
Tony & Rev. Karen Crosby  
Jennifer & Randy Cupp  
Curious Iguana / Marlene & Tom England  
Kathleen Curtin  
Ann Weller Dahl<sup>#</sup>  
Elisabeth Dahl  
Isaac Dalto  
Kenneth & Barbara K. Daniel  
Con & Lola Darcy\*  
Shannon Davis & Jim DiGloria  
Shaun & Betsy Davis®  
Richard & Rosalee Davison\*  
Marie Walsh Dean  
Mr. & Mrs. Jack Dettner  
David & Jacqueline Dianich  
Judy Dobbs & Bob Condlin\*\*  
Lillian Doherty

Drew & Marybeth Dowdell  
Larry & Jane Droppa  
Joan A. Dunn & Peter Bouxsein  
Jessica Dupont & Andrew Fickley  
Allyson Dwyer & Steve Matarazzo  
Dina Epshteyn  
Federation of State Humanities Councils  
Amy & Joseph Federman#  
Angela & Al Feldstein#  
Janet Felsten#  
Jill Ferris  
Mary Kay & Tom Finan\*  
Merle & David Fishman  
Donna & John Folkemer  
Kim & Jim Fortney  
Michael & Eileen Franch  
Frank Patten Family  
Ms. Ruth L. Frey  
Heide S. Fuchs  
Sue Fuhrmann  
Tucker & Anne Cantler Fulwiler  
Marilyn & Stanley Gabor  
John & Beth Galik  
Garrett Lakes Arts Festival  
Auni Gelles  
George Washington's Mount Vernon  
Malca S. Giblin  
Rachael Gibson  
Eliot Girsang  
Leslie Gorak  
Carole Elaine Graves  
Pamela & Michael Green  
Michael & Phyllis Greene  
Janet Gross  
Beatrice Gurwitz  
Anita Aidt Guy  
Nancy Hall  
Alan & Bonnie Hammerschlag  
Harford County Public Library  
Joseph & Rosemary Harris  
Mary & Mark Hastler  
Karen Sue Hathcock  
Marilyn M. Hatza  
Aaron Heinsman\*  
Tom & Flo Hendershot  
Erich Heyssel & Aaron Zwain, in Honor of Maria Heyssel  
Maria M. Heyssel  
John & Marcella Hickey  
Barbara A. Hill\*  
Nila & Douglas Hill  
Robert & Joann Holden  
Michael & Debbie Holt#  
James & Rosemary Hormuth  
Reed & Kathleen Hutner  
Josephine Imbriani & Lisa Vura-Weis  
Institute of Museum and Library Services  
Carol Irwin  
Mark Irwin & Laurel Chiat\*~  
Lisa & Michael Jablonover@  
Lindsay Jacks & Sean Downs  
Jacqueline & Freeman Hrabowski  
Charitable Giving Fund  
Alice Leslie Jaffe  
Michael E. Jensen

Robin Richards Johnson  
Sally & Mike Johnston  
Carianne Judge  
Mary Ann Jung: History Alive!  
Darryl & Mary Jurkiewicz  
Dr. Christine Kalke & Mr. Rolf Thoresen  
Bob & Mary Kambic  
Kanter Kallman Foundation  
Peter Szilard Karacsony  
Karukas Family  
Pam & Ed Kasemeyer  
Janice Keene  
Marjorie Winslow Kehoe®  
Leonard & Cathy Keifer  
Pat & Susan Keller  
Julie & Peter Kelly-Detwiler  
Hindy Kempler  
Ann Walker Kennedy  
Tom Kettler  
Julia A. King  
Sharon King  
Jim & Devra Kitterman  
Jayne Z. Klein  
Cathy D. Knepper, Ph.D.  
Mary Jane B. Knode  
Nancy K. Kopp  
David W. & Barbara Kornblatt  
Elena & Joseph Kostakis  
Hans & Linda Krimm  
Jody & Cecilia Landers  
Barry Lanman  
Phyllis Lansing  
Linda Lapides  
Laura LaPonte  
Judi Moore Latta & Joseph Latta  
Rachele Lawton  
Robert Leaf  
Dr. Hugh Ming Lee  
Mrs. Walter J. Leonard  
Mariana & Pete Leshner\*  
Ron & Annabel Leshner  
Dr. Philip & Mrs. Winnie Levinson  
Andrea D. Lewis  
Mavis P. Lewis  
Library of Congress  
Life Journeys Writers Guild  
Lawrence Lubetsky  
Jacquelyn Lucy\*\*  
Elizabeth M. Lutz  
M. Sigmund & Barbara K. Shapiro  
Philanthropic Fund  
The M&T Charitable Foundation  
Ellen & Joseph Macek  
Amy Macht & George Grose~  
Carol Macht & Sheldon Lerman  
Esther Mackintosh  
Diane Macklin®  
Irenaeus Lee Malatesta  
Maller Wealth Advisors  
Edythe & Louis Manza  
Martin & Julia Madden Family  
Charitable Gift Fund  
Maryland Center for History & Culture  
Maryland Council for Social Studies  
Maryland Department of Planning  
Maryland Historical Trust



Maryland Public Television+  
 Maryland State  
 Department of Education  
 Maryland Women's Heritage Center  
 Mason & Carter, Inc.  
 Albert J. Matricciani, Jr.  
 Michelle Matto  
 Lisa May  
 Mara Mayor  
 Maryland Charity Campaign  
 Laura & Tim McCann  
 McDaniels Law, LLC  
 Mr. & Mrs. Douglas P. McElrath  
 Alicia Jones McLeod\*  
 Amy Menzer, PhD  
 Kevin Mercer & M. Lindsay Thompson  
 Robert E. Meyerhoff & Rheda  
 Becker\*  
 Arthur Millholland & Luann Mostello  
 Mr. & Mrs. James Dabney Miller  
 Priscilla Mills  
 Bruce Minkoff & Virginia Shull  
 Julia Misplon & Anna Durbin  
 Heather Mitchell\*  
 Kathleen Mitchell & Dennis Bigley\*  
 Kimberly R. Moffitt  
 Tom & Cindi Monahan  
 Carol & Thomas Moran  
 Moser Family Philanthropic Fund  
 George A. Murnaghan  
 Marie Murphy  
 Jennifer Myers  
 Sharon & Josef Nathanson  
 National Cryptologic  
 Museum Foundation  
 National Endowment  
 for the Humanities  
 National History Day  
 Network for Good  
 Chelsea Newhouse®  
 Mary Newport  
 Charlie & Pat Nolan  
 Nora Roberts Foundation  
 Ron Nowaczyk & Maureen Lavan\*~  
 Randy & Jennifer Ontiveros\*~  
 Jim & Norma Osterhouse®  
 Judith Roberta O'Sullivan  
 Gail Webb Owings  
 Gia N. Paige  
 Stuart Parnes &  
 Sue Ellen Thompson®  
 Steven Douglas Pepe#  
 Maarten & Ruth Pereboom\*  
 Anne S. Perkins  
 Michael Pesa  
 Carol & Walter Petzold  
 Phillip M. & Mary E. Kasik  
 Charitable Fund  
 David & Charla Phillips  
 Hannah Pickworth  
 Jeanne Pirtle\*~  
 PNC Bank  
 Lynn Poirier  
 Katherine L. Poore  
 Mr. & Mrs. Garrett Power  
 Preston G. & Nancy M. Athey Fund  
 Cynthia Raposo & Joseph Furey\*  
 Gale Rasin  
 Catherine & James Reed  
 Joseph & Patricia Reidy  
 George K. Reynolds, III &  
 Jennifer Ward Reynolds®  
 Victor Rezendes\*  
 Tom & Angie Riford\*  
 George A. Roche\*  
 Nancy Rogers & Law Watkins\*~  
 Carmel Roques\*~

Mr. & Mrs. Robert Rosen  
 Heather Rosenbloom®  
 Lawrence Rovin & Carolyn Rugg  
 Betty S. & Vernon C. Rushing  
 Rebecca & Lonnie Rutledge  
 Dr. & Mrs. William J. Ryan  
 Mr. & Mrs. Frank Ryder  
 Jane Ann Said  
 Bill Salganik  
 Don Salvucci  
 Everett & Barbara Santos  
 Michael A. Sarbanes  
 Lauren Ashley Saunders  
 Marie & Charlie Schaub\*  
 Wayne R. Schaumburg  
 Joseph Schechter & Patricia Makely  
 Ralph Schmidt  
 Donna Schneider#  
 Scott Schneider & Miriam Struck  
 Will Schwarz  
 Margaret F. Schweitzer  
 Thomas M. Scott III  
 Stephen & Elizabeth Sfekas\*  
 Charles Shafer & Miriam Arenberg  
 Eve Shalley & Yoav Palatnik®  
 Jennifer Shea & Peter Bruns\*~®  
 Rob Sheehan  
 Davis Sherman &  
 Anita Gilman Sherman  
 G. H. Shinn  
 Glennor Shirley  
 Langley & Karen Shook  
 Mary & Robert Shull  
 Marjorie Simon  
 Marti & Robert Simpson  
 Rosanne Singer & Steve Mencher  
 Saima & Bilal Sitwat  
 The Skillman Family  
 Andrea Smith  
 Graylin & Blondell Smith  
 Guffrie & Catherine Smith\*~  
 Maria L. Solis  
 John Sondheim & Emily Greenberg

Walt & Pam Sonnevile  
 Megan Sowa  
 David & Rachel Sowards  
 Nancy Speicher  
 Rebecca & Lonnie Rutledge  
 Nessa Spitzer  
 St. Joseph Church  
 Kate Stein  
 Phoebe Stein\*  
 Sarah Stein  
 Tom Stoll  
 Keith T. P. Stone\*~  
 Tali Stopak-Mathis & Robert Mathis  
 Dr. & Mrs. Mark J. Stout  
 Margaret Strahan  
 Marlin E. Strand  
 Anne Sturm  
 Laura & Steve Sutton  
 Marilyn & Winston Tabb  
 Marcie Taylor-Thoma  
 Michael Terrin & Bess Keller#  
 Thalheimer-Eurich Charitable Fund  
 The Thomas Wilson Foundation  
 Joseph Thompson  
 W. Robert & Carolyn B. Thurber  
 Christopher W. Townsend  
 Gayle Travis-Keene & John T. Keene  
 Carol A. Trawick  
 David & Barbara Treasure#  
 Rachel Trentacoste®  
 Joseph Twarog  
 University of Maryland,  
 Baltimore County  
 The University of North Carolina Press  
 Curtis & Ruth Utz#  
 Joan Valentine  
 Rebecca & Richard VanGilder  
 Jane Wallace Vanneman  
 Carolyn vanRoden  
 Graylin & Blondell Smith  
 Yolanda Vazquez  
 Venable Foundation  
 Dr. Kamala Via  
 Gary Visscher

Susie Walczak  
 Dr. Charles Emerson Walker#  
 Stephen & Mary Walter  
 The Wawa Foundation  
 Wegmans  
 Rob & Marilyn Weissman®  
 Sarah Weissman  
 Pat Welch  
 WesBanco  
 Lynn Westrope  
 Libby Wheeler  
 The Whiting-Turner  
 Contracting Company  
 Marguerite Cummings Whitmore  
 Mr. & Mrs. Gary P. Willan  
 Evelyn & Ron Williams  
 Jayson T. Williams\*  
 Josephine^ & Gary J. Williams\*  
 Sydney Wilner®  
 Anne Tria Wise & Leo Wise  
 Paul Wissman & Aalam Singh  
 Wolman Family Foundation\*  
 Joseph & Diane Wood®  
 Sara Woodall  
 Maurice Wooden  
 Lydia Woods  
 Allyson Black Woodson\*~  
 Vernon H. C. & Lucy Wright  
 Mr. & Mrs. William Yakaitis  
 Eddie & Oakleigh Zecchino &  
 Mariclare Masterson  
 Steven G. Ziger &  
 James Arrington Snead\*

\* Leadership Circle  
 + in-kind gift  
 ^ deceased  
 ~ New Horizons Fund donor  
 # Judy Dobbs Fund for History  
 donor  
 @ Racial Equity Initiative donor



# PARTNERS

Maryland Humanities is able to serve every corner of the state thanks to our amazing local partners. The following is just a partial list of the hundreds of cultural, education, government, history, and social service organizations that help us bring the humanities to your communities.

## **Allegany County**

Allegany College of Maryland  
Allegany County Public Schools  
Allegany Museum  
Evergreen Heritage Center  
Frostburg State University

## **Anne Arundel County**

Annapolis Maritime Museum  
Anne Arundel County Public Library  
Anne Arundel County Public Schools  
Banneker-Douglass Museum Foundation  
Chesapeake Children's Museum  
Forest Woods Media Productions  
Galesville Community Center  
March On Maryland  
O'Malley Senior Center  
The Chesapeake Bay Chapter of the  
American Institute of Architects  
Seyvern Crossroads Foundation  
St. Martin's-in-the-Field Episcopal School

## **Baltimore County**

Baltimore County Public Library  
Baltimore County Public Schools  
Church of the Annunciation  
Community College of Baltimore County  
Fire Museum of Maryland  
Friends of Jerusalem Mill  
Hampton National Historic Site  
Historical Society of Baltimore County  
Institute for Islamic, Christian, and Jewish Studies  
Loyola Blakefield  
Maryland Lynching Memorial Project  
Maryland Women's Heritage Center  
Preservation Alliance of Baltimore County  
Rosedale Senior Center  
SeaAffinity  
St. Mark School  
Todd's Inheritance Historic Site  
Towson University  
University of Maryland, Baltimore County  
Writing Hearts

## **Baltimore City**

Afro Charities  
Bach in Baltimore  
Baltimore Architecture Foundation  
Baltimore City Public Schools  
Baltimore Museum of Industry  
Baltimore Sun  
Beloved Community Services Corp  
B'nai Israel Congregation  
The Bryn Mawr School  
CHARM: Voices of Baltimore Youth  
CityLit Project  
Coppin State University  
DewMore Baltimore  
DreamWorks CDC

Enoch Pratt Free Library  
Friends of President Street Station  
Fusion Partnerships  
Impact Hub  
The Ivy Bookshop  
Keswick Wise & Well Center for Healthy Living  
Leaders of a Beautiful Struggle  
LED Baltimore  
Lexington Market  
Lillie Carroll Jackson Civil Rights Museum  
Maryland Library Association  
Maryland State Library for the Blind and  
Print Disabled  
Maryland Women's Heritage Center and  
Museum  
Mercy High School  
MICA  
Mid-Atlantic Regional Moving Image Archive  
Motor House  
Mount Saint Joseph's High School  
MTM Foundation  
Muse 360 Arts  
New Lens  
The Peale Center for Baltimore History and  
Architecture  
Poe Baltimore  
Preservation Maryland  
Raymond Banks 'A Way With Words' Foundation  
The Society for the Preservation of Federal Hill  
and Fell's Point  
Star-Spangled Banner Flag House Association  
Susanna Wesley House

## **Calvert County**

Bayside History Museum  
Calvert Library  
Calvert County Historical Society  
Calvert County Public Schools  
Calvert Nature Society  
Southern Maryland Community Resources

## **Caroline County**

Caroline County Council of Arts  
Caroline County Public Library  
Caroline County Public Schools  
Federalsburg Historical Society  
Carroll County  
Carroll County Public Library  
Carroll County Public Schools  
North Carroll Senior Center  
Union Mills Homestead Foundation

## **Cecil County**

Cecil College Elkton Station  
Cecil County Public Library  
Port Deposit Heritage Corporation  
The Tome School

## **Charles County**

Charles County Public Library  
Charles County Public Schools  
Cover to Cover Book Club  
Farm Heritage Conservancy  
Life Journeys Writers Club  
Maryland Veterans Museum at Patriot Park



Neighborhood Creative Arts Center  
Society for the Restoration of Port Tobacco  
St. Mary's Bryantown School  
Dorchester County  
Cambridge Community Radio  
Cambridge Main Street  
Richardson Maritime Museum

### **Frederick County**

African-American Resources  
Cultural Heritage Society  
Brunswick Potomac Foundation  
Catoctin Furnace Historical Society  
Fox Haven Organic Farm  
Frederick County Landmarks Foundation  
Frederick County Public Libraries  
Frederick County Public Schools  
Frederick Farmers Market  
Frederick Homeschoolers  
Global Z Recording Project  
Hood College  
PA Homeschoolers AP Online  
Pumpnickel + Rye

### **Garrett County**

Garrett County Historical Society  
Garrett Lakes Arts Festival  
The Ruth Enlow Library

### **Harford County**

Edgewood Senior Center  
Friends of the Concord Point Lighthouse  
Harford County Public Library  
Harford County Public Schools  
Havre de Grace Activity Center  
Havre de Grace Maritime Museum  
Highland Senior Activity Center  
The Historical Society of Harford County  
Hosanna School Museum  
McFaul Activity Center  
Slate Farm Brewery  
Steppingstone Museum Association  
Susquehanna Museum of Havre de Grace  
Veronica "Roni" Chenowith Activity Center

### **Howard County**

The Homewood Center  
Howard County Historical Society  
Howard County Library System  
Howard County Public Schools  
Patapsco Heritage Greenway  
Kent County  
Eastern Shore Heritage  
Kent County Public Library  
Sumner Hall

### **Montgomery County**

Association of Vietnamese Americans  
Ally Theatre Company  
Barrie School  
Bullis School  
Caldwell Homeschool  
City of Rockville Recreation and Parks.  
Docs In Progress  
Forcey Christian School

Heritage Tourism Alliance of Montgomery County  
Main Street Connect  
Montgomery County Public Libraries  
Montgomery County Public Schools  
National Council for the Social Studies  
Olney Theatre Center  
Peerless Rockville

### **Prince George's County**

Bold Beautiful Brilliant Girls  
Youth Empowerment Group  
Coalition for African Americans  
in the Performing Arts  
College Park Aviation Museum  
Educare Resource Center  
Eleftheriou Homeschool  
Global Health and Education Projects  
Hyattsville City Hall  
James Agee Film Project  
Joe's Movement Emporium  
Laurel Historical Society  
Marietta House Museum  
Montpelier Arts Center  
Montpelier Mansion  
National Archives  
National Capital Radio and Television Museum  
People for Change Coalition  
Prince George's African American Museum  
and Cultural Center  
Prince George's Community College Foundation  
Prince George's County Memorial Library System  
Prince George's County Public Schools  
Pyramid Atlantic  
Sis's Tavern  
Sound Theory Urban Development Youth Outreach  
St. Vincent Pallotti High School  
The 13th Man

### **Queen Anne's County**

Kennard African-American Cultural Heritage Center  
Long Point Park  
Queen Anne's County Arts Council  
Queen Anne's County Historical Society  
Queen Anne's County Public Schools  
Queen Anne's Library System  
Route 18 Park  
Sudlersville Park

### **Somerset County**

Crisfield and Smith Island Cultural Alliance  
Crisfield Heritage Foundation  
MD Dept of Corrections,  
Eastern Correctional Institution  
Somerset County Library  
Somerset County Public Schools

### **St. Mary's County**

St. Mary's College of Maryland  
St. Mary's County Public Library  
St. Mary's County Public Schools

### **Talbot County**

Character Counts Mid Shore  
Chesapeake Bay Maritime Museum  
Chesapeake Film Festival

Oxford Community Center  
Oxford Museum  
Talbot County Free Library  
Talbot County Public Schools

### **Washington County**

Doleman Black Heritage Museum  
Hagerstown Aviation Museum  
Hagerstown Roundhouse Museum  
MD Dept of Corrections,  
Maryland Correctional Institution, Hagerstown  
MD Dept of Corrections,  
Maryland Correctional Training Center  
MD Dept of Corrections,  
Roxbury Correctional Institution  
Sharpsburg Historical Society  
Washington County Free Library  
Washington County Historical Society  
Washington County Literacy Chapter  
Washington County Public Schools

### **Wicomico County**

Lower Eastern Shore Humanities Network  
Nabb Research Center  
PACE  
Salisbury University  
Tri Community Mediation  
Wicomico County Public Schools  
Wicomico Public Libraries

### **Worcester County**

Delmarva Discovery Center & Museum  
Friends of the Julia A. Purnell Museum  
Rackliffe House Trust  
Worcester County Library  
Worcester County Public Schools

### **Statewide**

Maryland Council for Social Studies  
Maryland Department of Planning  
Maryland Historical Trust  
Maryland Public Television  
Maryland State Department of Education  
Maryland State Library  
Preservation Maryland

### **National**

Center for Schools & Communities  
Delaware Humanities  
Federation of State Humanities Councils  
Georgia Center for the Book  
Library of Congress Teaching  
with Primary Sources Program  
Middle States Council for the Social Studies  
National Book Festival  
National Council for History Education  
National Council for the Social Studies  
National Endowment for the Humanities  
National History Day  
National Humanities Alliance  
Smithsonian Institution  
Traveling Exhibition Service  
Virginia Center for the Book/Virginia Humanities



108 West Centre Street, Baltimore, MD 21201  
(410) 685-0095 | info@mdhumanities.org

@MDHumanities



Publication design by Kate Ahern  
Photos by or courtesy of Beach to Bay Heritage Area, Delmarva Discovery Center, Downtown Sykesville Connection, Educarte, Friends of Jerusalem Mill, Laurel Historical Society, Natasha Komoda, Ritchie History Museum, and Theresa Worden.