

[View in Browser](#)



## Back to School, Solar Energy and Resiliency in Maryland

September 2011



### [Cycle Maryland](#)

September 9-October 9 at various locations throughout the state. Enjoy the outdoors, get some exercise, support a greener environment and discover Maryland's magnificent landscape as you pedal your way around the state.

### [Anne Arundel County Fair](#)

September 14-18, at the Anne Arundel County Fairgrounds in Crownsville. Farm animals, exhibits, contests, carnival, entertainment, family atmosphere, agriculture education, 4-H exhibits and auction.

### [Charles County Fair](#)

September 15-18, Thurs. 5-10pm, Fri.-Sat. 9am-11pm and Sun. 10am-7pm at 8440 Fairground Rd. in La Plata. Annual agricultural fair; livestock, home arts, 4-H, commercial exhibits, midway rides, food and continuous family entertainment.

### [The Great Frederick Fair](#)

September 16-24, Fri.-Sat. 10am-10pm at the Frederick Fairgrounds (797 E Patrick St). The Great Frederick Fair offers exhibits, rides, entertainment and amusements for everyone.

### [African-American Cultural Festival](#)

## A Message from the Governor

*For the third consecutive year, Maryland's public schools have been ranked number one in the nation by Education Week Magazine. This would not have been possible without our dedicated schools and parental involvement in our children's lives.*

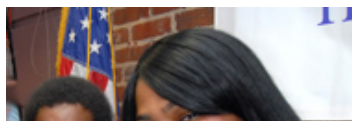
*We're proud of our students, and understand that we can always do better when we work together. We know that the more our children learn, the more they will earn as adults and the more jobs we can create in our State. Good luck to everyone this school year.*

- Governor O'Malley

## What's New?

### [Maryland's Infant Mortality Rate Declines](#)

After years of struggling with an infant mortality rate above the national average, Maryland has now



dropped to our lowest on record, at 6.7 deaths per 1,000.

While we are excited about this news, we will continue to work together to [reduce the rate](#) by improving the health of women before pregnancy, increasing the number of women who receive early prenatal care, and ensuring more comprehensive follow up care for mothers and babies.



## ▶ University of Maryland Goes Solar



Over 2,600 new solar panels installed on the top of the Severn Building in College Park will produce enough energy annually to power almost 73 homes for an entire year.

The installation shows a commitment to clean electricity and is one of the largest solar facilities in the DC region.

This project was made possible by [Project Sunburst](#).



## Marylanders on the Move: The Laytons

The Layton family operates the Lazy Days Farm in Vienna. After growing grain crops since the 1920s, the family diversified in 2010 when they opened Layton's Chance Vineyard and Winery. They have implemented Soil Conservation and Water Quality Plans, as well as Forest Stewardship and Integrated Pest Management Plans. The family was inducted into the Governor's Agricultural Hall of Fame this year.

September 17, 10am-6pm at the Towson Courts Plaza. The 15th annual Baltimore County African-American Cultural Festival will feature historic highlights, vendors, food and live music.

For more events around Maryland, visit the [Maryland Tourism Office](#) and follow [@travelMD](#) on Twitter.

 [Do you like the new Terps uniforms?](#)



[Review last month's poll results](#)

## # MARYLAND TWEETS

[@GovernorOMalley](#) A modern economy requires modern investments, and together, we've chosen to invest in our greatest asset, our people. <http://bit.ly/p2uOfX>

[@MEMA\\_Feeds](#) MIA reminds property insurers MD law provides "hurricane deductibles" pay be imposed only in limited circumstances

[@MDBiz](#) Maryland job creation now outpacing Virginia, North Carolina

[@MDStateParks](#): Think about planning a Fall camping trip with MD State Parks...best



Just last month, we visited the farm and talked about [Maryland's record cover crop enrollment](#).



## Innovative Maryland

Last month, Maryland's GIS community launched [OSPREY](#), an interactive emergency management map that helps us stay informed amid troublesome events in our state. The online tool was quickly tested, as Hurricane Irene arrived days after its public release. Among other vital information, it initially featured an evaluation of flood-prone areas in our state.

But as information changed, so did our map. As it tracked the storm, it also revealed its effects, and morphed to include power outages: by county, then specific zip codes. Additional, co-existing geographic information remains vital for planning and responsiveness for not just the State, but individuals and families as well.



The first tenet of [StateStat](#) has been: *Accurate and timely intelligence, shared by all*. The "all" applies to you, too. We hope to continue leveraging technology to make our government more transparent, and our citizenry more informed.

And we continue to invite your feedback and comments on our [Map Center](#) forum.

time of year to camp as the trees change colors!

[StateMaryland](#) Know Before You Go - log onto [www.MD511.org](http://www.MD511.org), call 511 or 1-855-GOMD511 for traffic information.

### Hashtag of the Month

Use #MDPride to talk about your favorite Maryland sports teams, events, people and places throughout our state.

Maryland's Office of the Governor

Office of The Governor - 100 State Circle - Annapolis, Maryland 21401-1925

410-974-3901

 Facebook |  Twitter |  YouTube  
[Forward](#) - [Opt Out](#)