

Statistical Abstract

ANNUAL REPORT of the MARYLAND JUDICIARY



BARBARA ANN DODGE 1980

1979-1980

COURT LIBRARY CIRCUIT COURT
PRINCE GEORGE'S COUNTY
UPPER MARI BORO, MARYLAND

Report Prepared By:

The Judicial Planning, Research,
and Special Projects Unit

of the

Administrative Office of the Courts

TABLE OF CONTENTS

DEFINITIONS	1
THE COURT OF APPEALS	7
THE COURT OF SPECIAL APPEALS	17
THE CIRCUIT COURTS	25
THE DISTRICT COURT	81
APPENDIX	95
COMPARISON OF RATE IN FILINGS AND GROWTH IN JUDGEShips IN THE COURTS OF MARYLAND	97
STATE BOARD OF LAW EXAMINERS	98
STANDING COMMITTEE ON RULES OF PRACTICE AND PROCEDURE	99
APPELLATE JUDICIAL NOMINATING COMMISSION	101
TRIAL COURT JUDICIAL NOMINATING COMMISSIONS	101

TABLES

CA-1	Appeals Docketed by Term - Court of Appeals
CA-2	Origin of Appeals by Appellate Judicial Circuit - Court of Appeals
CA-3	Applications for Certiorari
CA-4	Average Time Intervals for Disposition of Appeals (In Days and Months)
CA-5	Status of Court of Appeals Cases During Fiscal 1980
CA-6	Miscellaneous Docket (Applications for Certiorari)
CA-7	Disposition of Court of Appeals Cases - Fiscal 1980
CSA-1	Appeals Docketed by Term - Court of Special Appeals
CSA-2	Origin of Appeals by Appellate Judicial Circuit - Court of Special Appeals
CSA-3	Status of Court of Special Appeals Cases During Fiscal 1980
CSA-4	Average Time Intervals for Disposition of Appeals (In Days and Months)
CSA-5	Disposition of Court of Special Appeals Cases During Fiscal 1980
CSA-6	Disposition of Applications for Leave to Appeal During Fiscal 1980
CSA-7	Relationship Between Court of Special Appeals Cases and Circuit Court Trials
CC-1	Law, Equity, Criminal, and Juvenile - Filed, Terminated and Pending
CC-2	Percentages of Filings
CC-3	Categories of Cases Filed

CC-4	Categories of Cases Terminated
CC-5	Terminations as a Percentage of Filings in the Circuit Courts
CC-6	Five Year Comparative Table - All Cases - Filings and Terminations
CC-7	Five Year Comparative Table - Law Cases - Filings and Terminations
CC-8	Five Year Comparative Table - Equity Cases - Filings and Terminations
CC-9	Five Year Comparative Table - Criminal Cases - Filings and Terminations
CC-10	Five Year Comparative Table - Juvenile Causes - Filings and Terminations
CC-11	Cases Tried by County and Circuit
CC-12	Cases Tried by Major Jurisdiction
CC-13	Percentage of Circuit Court Case Filings Originating from the District Court
CC-14	Law Cases - Ratio of Trials to Dispositions
CC-15	Five Year Comparative Table - Law Cases Tried
CC-16	Criminal Cases - Ratio of Trials to Dispositions
CC-17	Five Year Comparative Table - Criminal Cases Tried
CC-18	Five Year Comparative Table - Equity Hearings
CC-19	Average Days from Filing to Trial or Hearing in the Metropolitan Jurisdictions
CC-20	Average Days from Filing to Trial or Hearing
CC-21	Average Days from Filing to Disposition

- CC-22 Law -- Average Days from Filing to
Disposition by Age of Cases and Cumulative
Percentages of Dispositions Within Specific
Time Periods
- CC-23 Equity -- Average Days from Filing to
Disposition by Age of Cases and Cumulative
Percentages of Dispositions Within Specific
Time Periods
- CC-24 Criminal -- Average Days from Filing to
Disposition by Age of Cases and Cumulative
Percentages of Dispositions Within Specific
Time Periods
- CC-25 Juvenile -- Average Days from Filing to
Disposition by Age of Cases and Cumulative
Percentages of Dispositions Within Specific
Time Periods
- CC-26 Juvenile Dispositions
- CC-27 Population and Caseload Per Circuit Court
Judge
- CC-28 Five Year Comparative Table - Cases Filed
and Terminated Per Judge
- CC-29 Cases Filed in the Circuit Court Per
Thousand Population
- CC-30 Ratio of Jury Trials to Population
- CC-31 Five Year Comparative Graph - Civil Cases
Filed
- CC-32 Appeals from District Court and
Administrative Agencies
- CC-33 Five Year Comparative Chart - Appeals from
District Court and Administrative Agencies
- CC-34 Five Year Comparative Table - Appeals from
Administrative Agencies
- CC-35 Five Year Comparative Table - Appeals from
the District Court
- CC-36 Five Year Comparative Table - Habeas Corpus
and Post Conviction Cases Filed

CC-37	Applications for Review of Criminal Sentences
DC-1	Motor Vehicle and Civil Cases Filed or Processed in the District Court of Maryland
DC-2	Motor Vehicle Cases Processed by the District Court of Maryland
DC-3	Civil Cases Filed in the District Court of Maryland
DC-4	Five Year Comparative Table - Motor Vehicle, Criminal, and Civil Cases Filed in the District Court
DC-5	Five Year Comparative Table - Motor Vehicle Cases Processed by the District Court
DC-6	Four Year Comparative Table - Criminal Cases by the Number of Defendants Charged -- Processed in the District Court
DC-7	Five Year Comparative Table - Civil Cases Filed in the District Court
DC-8	Population and Caseload Per District Court Judge
DC-9	Cases Filed or Processed in the District Court Per Thousand Population



Definitions As Used In This Volume

ADULT -- A person who is 18 years old or older charged with an offense relating to juveniles to be heard in Juvenile Court.

APPEAL -- The resorting to a higher court to reverse or correct a decision of a tribunal below. This includes appeals to the Court of Appeals and Court of Special Appeals.

Appeals to the circuit courts include:

1. Record - The judge's review of a written or electronic recording of the proceedings in the District Court.
2. De Novo - The retrial of an entire case initially tried in the District Court.
3. Admin. Agency - Appeals from decisions rendered by Administrative Agencies. For example:

County Commissioner
Department of Taxation and Assessments
Employment Security
Funeral Director
Liquor License Commissioners
Motion Picture Censors
Physical Therapy
State Comptroller (Sales Tax, etc.)
State Motor Vehicle Authority
Supervisors of Elections
Tax Court
Workmen's Compensation Commission
Zoning Appeals
Any other administrative body from which an appeal is authorized.

APPLICATION FOR LEAVE TO APPEAL -- Procedural method by which a petitioner seeks leave of court to grant an appeal. When granted, the matter addressed is transferred to the direct appeal docket of the court for customary briefing and argument. Maryland Rules of Procedure permit the filing of such applications in matters dealing with post conviction, inmate grievances and denial of or grant of excessive bail in habeas corpus proceedings.

CASE -- A matter having a unique docket number; includes original and reopened (post-judgment) matters.

CASELOAD -- The total number of cases filed or pending with a court during a specific period of time. Cases may include all categories of matters (law, equity, juvenile and criminal).

C.I.N.A. -- Child in Need of Assistance -- Refers to a child who needs the assistance of the court because:

1. The child is mentally handicapped or
2. Is not receiving ordinary and proper care and attention and
3. The parents, guardian or custodian are unable or unwilling to give proper care and attention.

C.I.N.S. -- Child in Need of Supervision -- Refers to a child who requires guidance, treatment or rehabilitation because of:

1. Habitual truancy, ungovernableness or behavior that would endanger himself or others.
2. Also included in this category is the commission of an offense applicable only to children.

CONDEMNATION -- The process by which property of a private owner is taken for public use without the owner's consent but upon the award and payment of just compensation.

CONSENT -- An uncontested case that usually involves a tort or motor tort case.

CONTRACTS -- A case involving a dispute over an oral or written agreement between two or more parties.

Breaches of verbal or written contracts
Landlord/tenant appeals from District Court
Some attachments and removals
Some claims for summary judgments

CONFESSED JUDGMENT -- The act of a debtor in permitting judgment to be entered by a creditor immediately upon filing of a written statement by the creditor to the court.

DELINQUENCY -- Commission of an act by a juvenile which would be a crime if committed by an adult.

DISPOSITION -- Entry of final judgment in a case.

DISTRICT COURT -- CONTESTED -- Only applies to civil, a case that has gone to trial and both parties (plaintiff and defendant) appear.

DISTRICT COURT CRIMINAL CASE -- Single defendant charged per single incident. It may include multiple charges arising from the same incident.

DISTRICT COURT FILING -- The initiation of a civil action or case in the District Court. District Court criminal and motor vehicle cases are reported as "processed" rather than as "filed."

DOCKET -- Formal record of court proceedings.

EQUITY HEARING -- See "Trials."

FILING -- Formal commencement of a judicial proceeding by submitting the necessary papers pertaining to it. Original filing under one docket number and subsequent reopenings (post-judgment) under the same number are counted as separate filings.

FISCAL YEAR -- The period of time from July 1 of one year through June 30 of the next. For example: July 1, 1979, to June 30, 1980.

HABEAS CORPUS

PRISONER -- All petitions or applications for the writ by persons alleging improper detention.
(NOTE: This does not include bail hearing.)

OTHER -- All other petitions for writs such as:

Bail set for hearing
Petition for custody in infant cases
Petition for immediate bail
Petition for sanity hearings

INDICTMENT -- The product of a grand jury proceeding against an individual.

INFORMATION -- Written accusation of a crime prepared by the State's Attorney's Office.

JURY TRIAL PRAYER -- A request for trial by jury in the circuit court for a charge normally heard in the District Court. A jury trial prayed for a motor vehicle case carries a sentence of more than six months.

MISCELLANEOUS DOCKET -- Established for and maintained primarily as a method of recording and identifying those preliminary proceedings or collateral matters before the Court other than direct appeals.

MOTOR TORTS -- Personal injury and property damage cases resulting from automobile accidents. (This does not include consent cases.)

NOLLE PROSEQUI -- A formal entry upon the record by the plaintiff in a civil suit, or the prosecuting officer in a criminal case, to no longer prosecute the case.

OTHER LAW -- This category includes:

Conversion	Mandamus
Detinue	Replevin
Ejectment	Trespass
Issues from Orphans' Court	
Attachments on Original Process	

OTHER TORTS -- Personal injury and property damage cases resulting from:

Assault and battery - an unlawful force to inflict bodily injury upon another.
Certain attachments
False imprisonment - the plaintiff is confined within boundaries fixed by the defendant for some period of time.
Libel and slander - a defamation of character.
Malicious prosecution - without just cause an injury was done to somebody through the means of a legal court proceeding.
Negligence - any conduct falling below the standards established by law for the protection of others from unreasonable risk of harm.
Miscellaneous

PENDING CASE -- Case in which no final disposition has occurred.

POST CONVICTION -- Proceeding instituted to set aside a conviction or to correct a sentence that was unlawfully imposed.

STET -- Proceedings are stayed; one of the ways a case may be terminated.

TERMINATION -- Same as "disposition."

TRIALS

LAW or EQUITY Hearing

Court Trial -- A contested hearing on the facts of the case to decide in favor of either party where testimony is given by one or more persons.

Jury Trial -- A contested hearing on the facts of the case to decide in favor of either party where the jury has been sworn.

CRIMINAL

Court Trial -- A contested hearing on the facts of the case to decide the guilt or innocence of the defendant where one or more witnesses has been sworn.

Jury Trial -- A contested hearing on the facts of the case to decide the guilt or innocence of the defendant, where the jury has been sworn.



THE COURT OF APPEALS



THE COURT OF APPEALS

Statistics found in this section of the Statistical Abstract are generally tabulated by fiscal year although the Court of Appeals follows a year related to the Term of Court, which always begins on the second Monday in September. For each Term of Court there is a term docket which relates to appeals heard during that term. In the statistics that follow, the reader should carefully note those that are tabulated by fiscal year, and those that pertain to a particular docket of a Term of Court.

During the fiscal year July 1, 1979, through June 30, 1980, the Court of Appeals had 207 regular appeals before it for consideration. Forty of those appeals were carried over from the 1978 Term docket, while the remaining (167) were filed on the 1979 Term docket.

Approximately 29.34 percent (49) of the 167 appeals on the 1979 Term docket were from the Sixth Appellate Judicial Circuit (Baltimore City). The Third Appellate Circuit was second with 37, followed by the Fourth with 28, the Fifth with 26, the Second with 15 and the First with 12. Besides Baltimore City (49), Montgomery County had the next highest number of appeals to the Court of

Appeals with 37. Prince George's County was next with 28, Anne Arundel County, 26, and Baltimore County tallied only 15. The combined total of the four metropolitan counties plus Baltimore City was 123 or 73.6 percent of the total 1979 docket.

By the close of the 1980 Fiscal Year, the Court of Appeals had disposed of all but 47 of the regular appeals pending before it. The appeals had been heard but had not been disposed of by opinion due to the constraints of time. During Fiscal 1980, the Court considered and decided 147 appeals, and filed 140 majority opinions, 123 of which were reported. Eleven were considered per curiam. Members of the Court also filed 13 dissenting opinions, and one concurring opinion. Appeals on the 1979 docket averaged 3.7 months from docketing to argument and an additional 2.8 months until decision.

Of the 167 appeals on the 1979 docket, 58 were cases that by-passed the Court of Special Appeals without being heard there. Only 6.8 percent or 11 appeals on the 1979 docket were dismissed prior to argument or submission to the Court of Appeals.

During Fiscal 1980, 555 petitions for issuance of Writs of Certiorari were filed in the Court of Appeals while 495 were terminated. Civil petitions constituted

50.5 percent (255) while the remaining 49.5 percent (245) were of a criminal nature. The Court granted 24.4 percent (121) of the total petitions submitted; 64 of which were civil and 57 of which were criminal.

Also during Fiscal 1980, the Court of Appeals admitted 703 persons to the practice of law, including 61 attorneys from other jurisdictions. It also conducted 24 disciplinary proceedings involving members of the Maryland Bar.

TABLE CA-1

APPEALS DOCKETED BY TERM COURT OF APPEALS

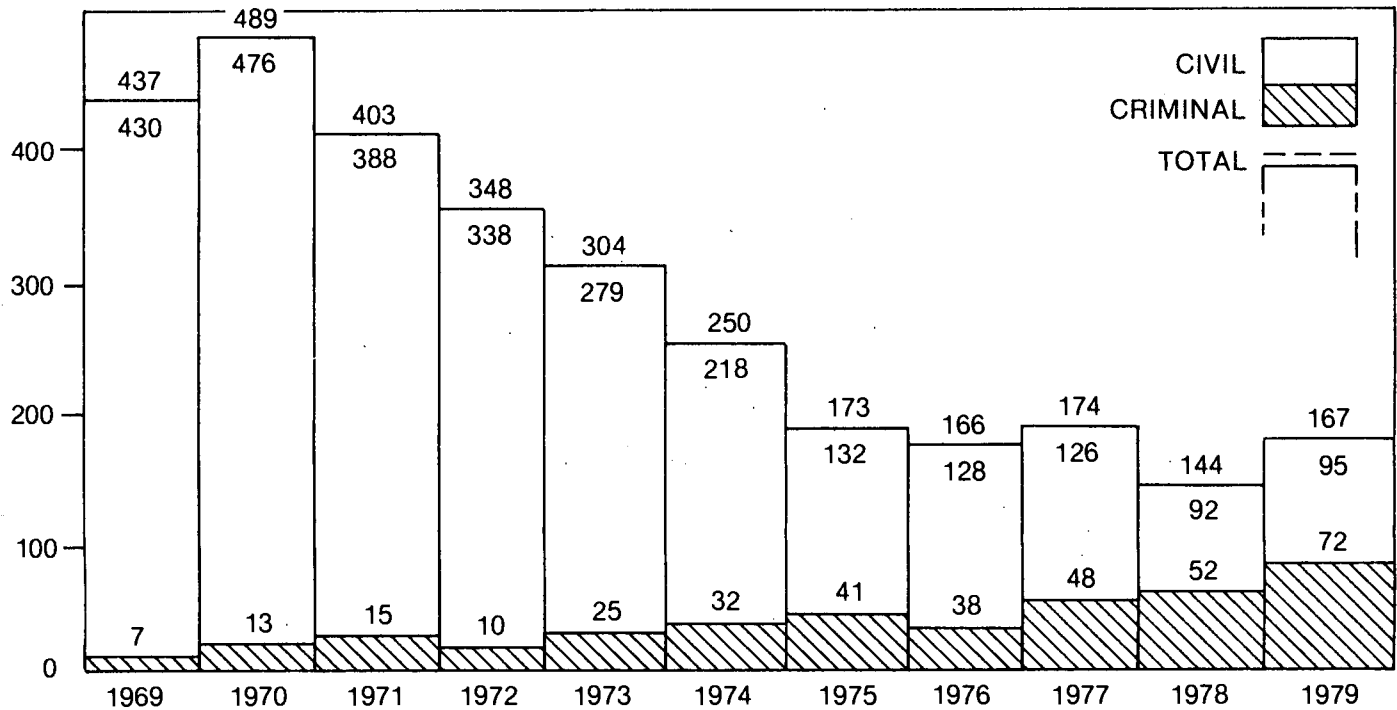


TABLE CA-2

ORIGIN OF APPEALS BY APPELLATE JUDICIAL CIRCUIT COURT OF APPEALS

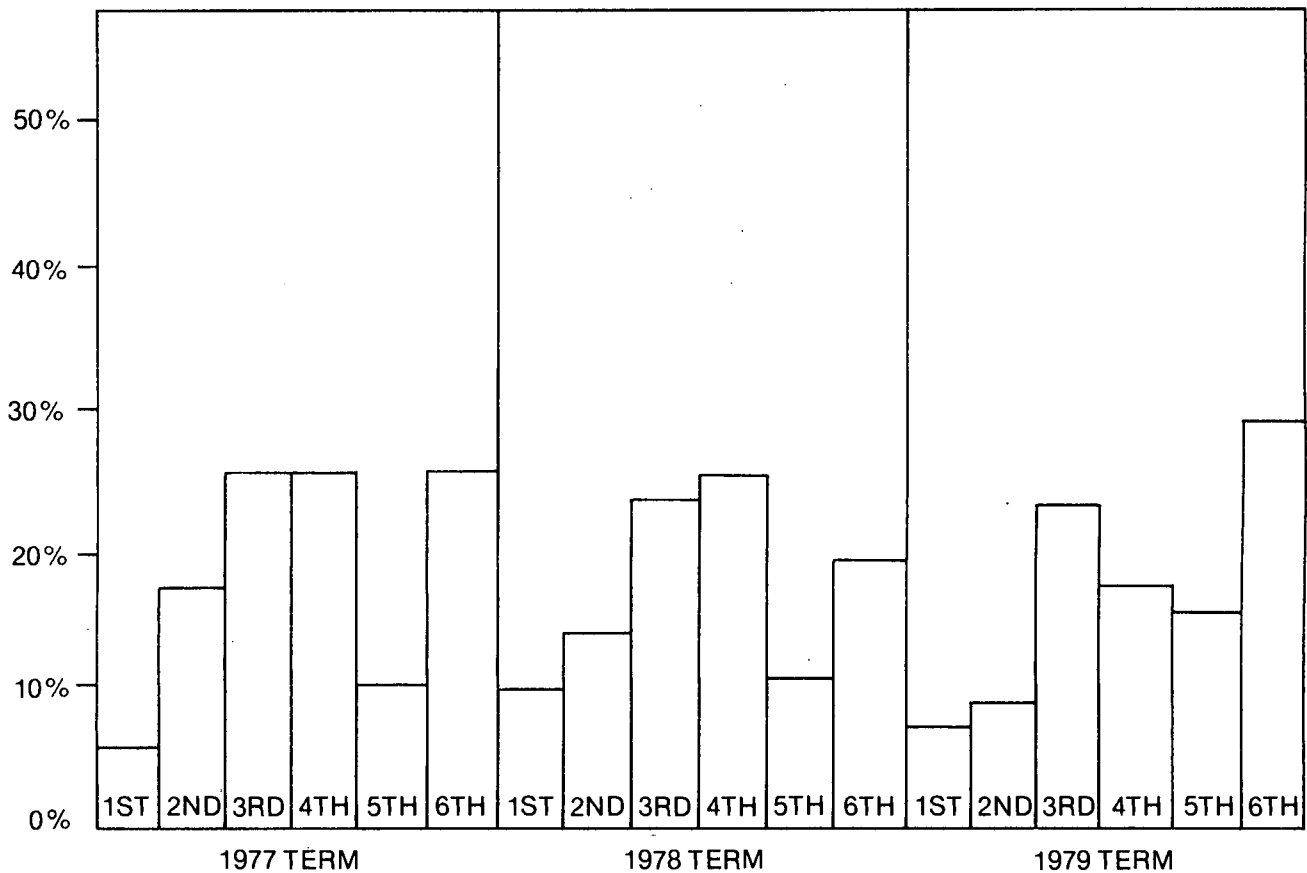


TABLE CA-3

APPLICATIONS FOR CERTIORARI

	<u>Total Dispositions</u>	<u>Number Granted</u>	<u>Percentage</u>
1975-76	464	104	22.4
1976-77	480	114	23.7
1977-78	491	92	18.7
1978-79	463	101	21.8
1979-80	495	121	24.4

TABLE CA-4

AVERAGE TIME INTERVALS FOR DISPOSITION OF APPEALS

(In Days and Months)

<u>Docket</u>	<u>Original Filing to Disposition in Circuit Court</u>	<u>Disposition in Circuit Court to Docketing in Court of Appeals</u>	<u>Docketing to Argument</u>	<u>Argument to Decision</u>
1975	12.7	6.2	2.2	1.1
1976	15.4	7.2	2.6	1.6
1977	13.9	7.1	2.7	1.7
1978	16.9	8.6	3.5	2.8
1979	486 16.2	281 9.4	112 3.7	83 2.8

TABLE CA-5
STATUS OF
COURT OF APPEALS CASES
DURING FISCAL 1980

	<u>Civil</u>	<u>Criminal</u>	<u>Total</u>
Appeals During FY 80	123	84	207
<u>Status</u>			
Disposed of	99	61	160
Dismissed Prior to Argument	7	4	11
Transferred to Court of Special Appeals	1	1	2
Considered and Decided	91	56	147
Pending	24	23	47
<u>Origin</u>			
1978 Docket	28	12	40
1979 Docket	95	72	167

TABLE CA-6
MISCELLANEOUS DOCKET
(Applications for Certiorari)

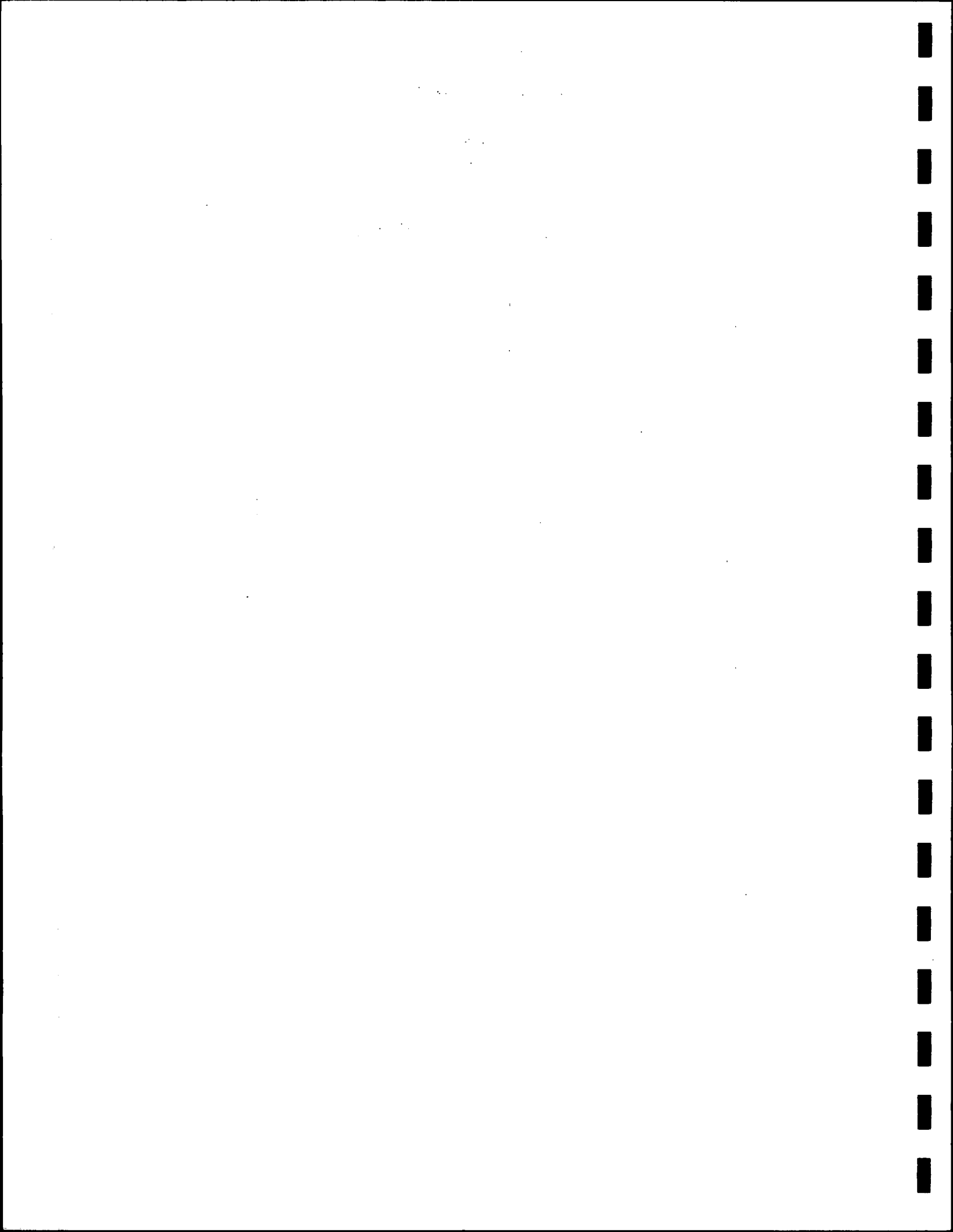
	<u>Granted</u>	<u>Dismissed</u>	<u>Denied</u>	<u>Withdrawn</u>	<u>Total</u>
Applications	121	3	369	2	495
CIVIL	64	2	182	2	250
CRIMINAL	57	1	187		245

TABLE CA-7

DISPOSITION OF COURT OF APPEALS CASES

JULY 1, 1979 - JUNE 30, 1980
FISCAL 1980

	<u>Law</u>	<u>Equity</u>	<u>Juvenile</u>	<u>Criminal</u>	<u>Total</u>
Affirmed	24	17	2	18	61
Reversed	26	12	1	32	71
Dismissed - Opinion Filed	0	1	0	1	2
Dismissed Without Opinion	0	0	0	0	0
Remanded Without Affirmance or Reversal	1	0	0	2	3
Affirmed in Part, Reversed in Part	5	1	0	1	7
Modified and Affirmed	0	1	0	2	3
Stayed	0	0	0	0	0
Dismissed Prior to Argument or Submission	2	3	2	4	11
Transferred to Court of Special Appeals	0	1	0	1	2
Total Cases Disposed During Fiscal Year 1980	58	36	5	61	160
Total Cases Pending at Close of Fiscal Year 1980	15	9	0	23	47
Total Cases Disposed and Pending During Fiscal Year 1980	73	45	5	84	207



THE COURT OF SPECIAL APPEALS



THE COURT OF SPECIAL APPEALS

In studying the statistics in this section of the Statistical Abstract, the reader should bear in mind that the remarks as to Term of Court and fiscal year found in the previous section, are applicable here as well. During the fiscal year, July 1, 1979, through June 30, 1980, the Court of Special Appeals had 1,830 regular appeals before it for consideration. One hundred and fifty-nine of those were from the 1978 Term docket and had been heard during the previous fiscal year, but had not been disposed of by opinion due to the short period of time between hearing and close of the fiscal year. An additional 1,671 were filed on the 1979 Term docket, representing an increase over the previous term by 15.26 percent. Approximately 6 percent of the trials heard at the circuit court level were appealed to the Court of Special Appeals. (See Table CSA-7.)

Of the 1,671 appeals on the 1979 docket, 453 (27.1%) originated in the Sixth Appellate Judicial Circuit (Baltimore City), followed by the Third Appellate Circuit with 304 and the Fourth Appellate Circuit with 293. The second, fifth, and first circuits recorded 248, 207, and 166 appeals, respectively. Montgomery County noted 239

appeals followed by Prince George's County with 230, Baltimore County with 200 and Anne Arundel County with 137. The total 806 appeals from these four largest counties, when added to the 453 for Baltimore City, accounted for three-fourths (75.3%) of the total 1979 Term docket.

At the close of the 1980 Fiscal Year, the Court of Special Appeals had disposed of 1,473 appeals, leaving 357 to be concluded. All of the latter had been argued, but had not been disposed of due to the constraints of time. The Court actually considered and decided 1,082 appeals and filed 1,061 majority opinions in their disposition. Reported opinions numbered 218 while 843 opinions were unreported. Members of the Court also filed three dissenting opinions and five concurring opinions. Appeals averaged 5.7 months from docketing to hearing and an additional 0.9 months until decision.

In addition to the disposition of its heavy regular appellate caseload, the Court of Special Appeals considered 105 applications for leave to appeal during Fiscal 1980 and granted ten. It also considered 30 miscellaneous matters.

TABLE CSA-1
APPEALS DOCKETED BY TERM
COURT OF SPECIAL APPEALS

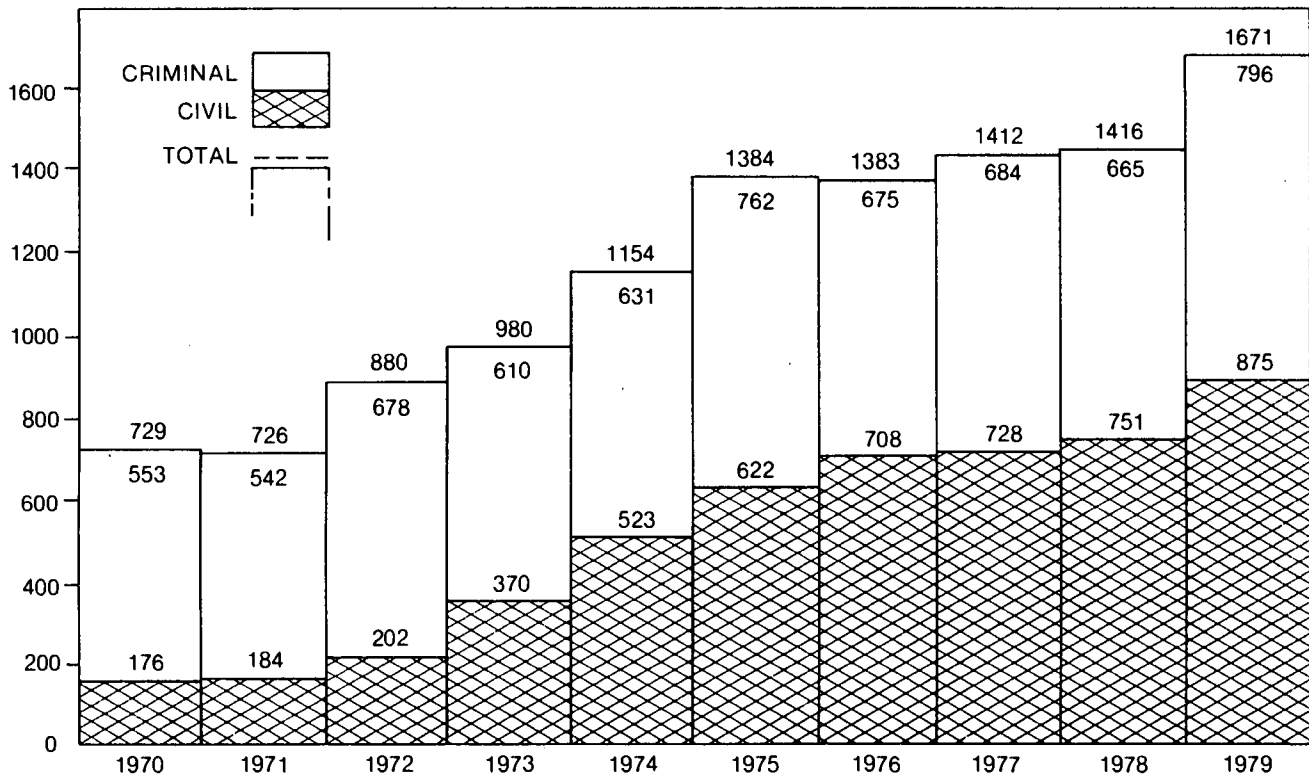


TABLE CSA-2
ORIGIN OF APPEALS
BY APPELLATE JUDICIAL CIRCUIT
COURT OF SPECIAL APPEALS

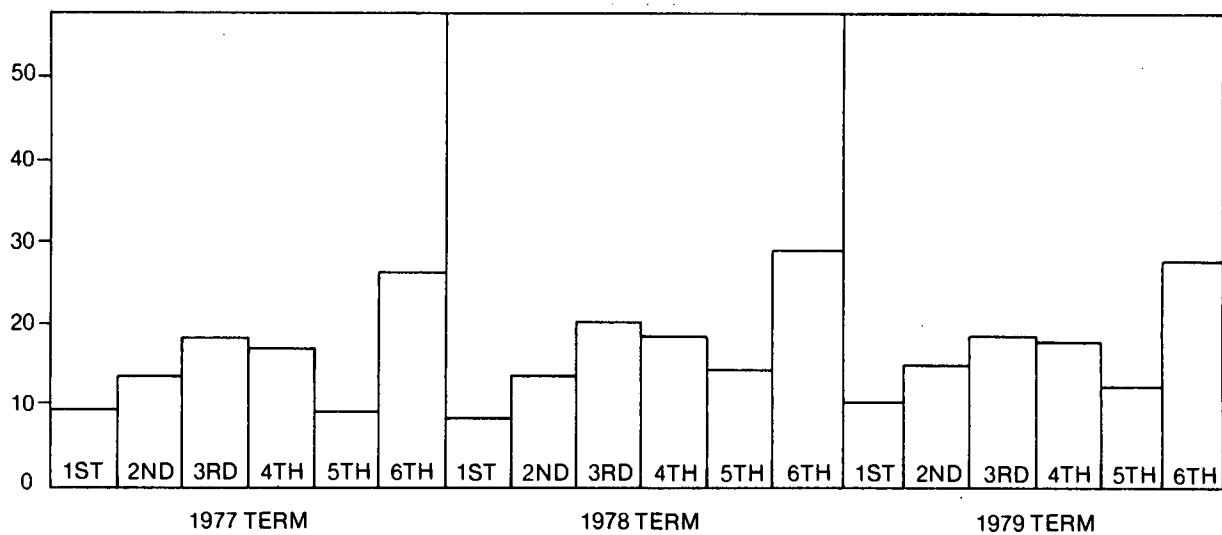


TABLE CSA-3

STATUS OF
COURT OF SPECIAL APPEALS CASES
DURING FISCAL 1980

	<u>Civil</u>	<u>Criminal</u>	<u>Total</u>
Appeals During FY 80	958	872	1,830
<u>Status</u>			
Disposed of	778	695	1,473
Dismissed Prior to Argument	244	96	340
Transferred to Court of Appeals	40	10	50
Stayed	1	0	1
Considered and Decided	493	589	1,082
Pending	180	177	357
<u>Origin</u>			
1978 Docket	83	76	159
1979 Docket	875	796	1,671

TABLE CSA-4

AVERAGE TIME INTERVALS
FOR DISPOSITION OF APPEALS

(In Days and Months)

<u>Docket</u>	<u>Original Filing to Disposition in Court Below</u>	<u>Disposition in Circuit Court to Docketing in Court of Special Appeals</u>	<u>Docketing to Argument</u>	<u>Argument to Decision</u>
1975	10.2	2.2	4.2	1.2
1976	11.3	2.6	4.6	1.1
1977	11.5	2.7	4.9	0.7
1978	16.3	3.4	5.0	1.2
1979	465 15.5	110 3.7	171 5.7	27 0.9

TABLE CSA-5

DISPOSITION OF COURT OF SPECIAL APPEALS CASES DURING FISCAL 1980

	<u>Law</u>	<u>Equity</u>	<u>Juvenile</u>	<u>Criminal</u>	<u>Total</u>
Affirmed	192	109	13	472	786
Reversed	62	38	4	99	203
Dismissed - Opinion Filed	22	7	0	1	30
Dismissed - Without Opinion	0	0	0	2	2
Remanded Without Affirmance or Reversal	5	7	1	3	16
Affirmed in Part, Reversed in Part	15	13	1	11	40
Modified and Affirmed	3	1	0	1	5
Stayed	1	0	0	0	1
Dismissed Prior to Argument or Submission	146	87	11	96	340
Transferred to Court of Appeals	18	20	2	10	50
Total Cases Disposed During Fiscal Year 1980	464	282	32	695	1473
Total Cases Pending at Close of Fiscal Year 1980	88	79	13	177	357
Total Cases Disposed and Pending During Fiscal Year 1980	552	361	45	872	1830

TABLE CSA-6

DISPOSITION OF APPLICATIONS FOR LEAVE TO APPEAL DURING FISCAL 1980

	<u>Granted</u>	<u>Dismissed</u>	<u>Denied</u>	<u>Remanded</u>	<u>Total</u>
Post Conviction	9	7	77	5	98
Inmate Grievance	1		6		7
TOTALS	10	7	83	5	105

TABLE CSA-7

RELATIONSHIP BETWEEN COURT OF SPECIAL APPEALS
CASES AND CIRCUIT COURT TRIALS
FISCAL 1980

<u>Jurisdiction</u>	<u>Court of Special Appeals 1980 Appeals</u>	<u>Circuit Court 1979 Trials</u>	<u>Ratio of Appeals To Trials</u>
FIRST CIRCUIT	92	1,642	5.60
Dorchester	28	401	6.98
Somerset	7	132	5.30
Wicomico	48	872	5.50
Worcester	9	237	3.79
SECOND CIRCUIT	80	825	9.69
Caroline	9	86	10.46
Cecil	42	539	7.79
Kent	9	31	29.03
Queen Anne's	6	141	4.25
Talbot	14	28	50.00
THIRD CIRCUIT	245	6,297	3.89
Baltimore	199	5,932	3.35
Harford	46	365	12.60
FOURTH CIRCUIT	53	609	8.70
Allegany	10	286	3.49
Garrett	2	122	1.63
Washington	41	201	20.39
FIFTH CIRCUIT	207	3,384	6.11
Anne Arundel	138	1,713	8.05
Carroll	27	568	4.75
Howard	42	1,103	3.80
SIXTH CIRCUIT	251	2,852	8.80
Frederick	12	273	4.39
Montgomery	239	2,579	9.26
SEVENTH CIRCUIT	290	4,977	5.82
Calvert	14	107	13.08
Charles	19	256	7.42
Prince George's	227	4,431	5.12
St. Mary's	30	183	16.39
EIGHTH CIRCUIT	453	8,903	5.08
Baltimore City	453	8,903	5.08
STATE	1,671	29,489	5.66

THE CIRCUIT COURTS



THE CIRCUIT COURTS

FILINGS

Law, equity, juvenile and criminal case filings amounted to 151,946 in Fiscal 1980. This figure also includes 2,527 juvenile causes heard at the District Court level in Montgomery County. With respect to total circuit court caseload, 40.1 percent of the filings were in equity, 25.7 percent in criminal, 17.5 percent in juvenile, and 16.7 percent in the law category.

The Fiscal 1980 filings of 151,946 increased by 4.7 percent over the 145,066 filings recorded last year. Increases were registered in all categories and in the following amounts: law filings by 18.0 percent, juvenile by 4.5 percent, equity by 2.3 percent and criminal by 1.2 percent.

This year the 19,496 law cases filed in the five major jurisdictions of Baltimore County, Anne Arundel County, Montgomery County, Prince George's County, and Baltimore City accounted for 77.0 percent of the total 25,319 State caseload. This represents a 19.5 percent upward climb over the 16,320 filings recorded for these jurisdictions in Fiscal 1979. The other 19 counties

recorded 5823 law cases; only 23.0 percent of the total law filings and representing a 13.4 percent increase over the 5134 cases counted last year. Large growth rates were found in the following areas: Baltimore City (29.6 percent), Prince George's County (18.8 percent), Baltimore County (16.8 percent), and Montgomery County (15.7 percent). Anne Arundel County showed a slight increase of 4.9 percent.

Equity case filings in the four major jurisdictions and Baltimore City accounted for 44,297 cases or 72.6 percent of the State filings recorded at 60,976. The figures in the major jurisdictions dropped by a mere 0.1 percent over the 44,362 cases filed in Fiscal 1979. The other 19 counties consumed a small 27.4 percent of the total caseload in Fiscal 1980, amounting to 16,679 cases but still an increase of 9.4 percent over the 15,248 cases recorded last year. Rates of growth were calculated for Prince George's (4.5 percent) and Montgomery Counties (2.7 percent). Decreases were found in Anne Arundel County (6.3 percent), Baltimore County (2.4 percent), and Baltimore City (0.2 percent).

The Circuit Court for Montgomery County reported that, in exercising jurisdiction formerly held by an orphans' court, it conducted 52 hearings and signed 2,525 orders during Fiscal 1980. The Circuit Court for Harford

County exercises the same jurisdiction and recorded 30 hearings and signed 915 orders.

Criminal case filings statewide totaled 39,007 in Fiscal 1980. The 32,258 criminal filings for the four major jurisdictions and Baltimore City represent a 0.9 percent decrease as compared to the 32,562 filings recorded last year. However, these areas continue to consume the large majority of the State's criminal caseload (82.7 percent) compared to the amount of cases filed in the other 19 counties (17.3 percent). The other 19 counties recorded 6749 criminal cases compared to 5954 cases recorded last year, resulting in a 13.3 percent increment. Increases were noted in Montgomery (22.9 percent) and Prince George's Counties (7.5 percent). Decreases were noted in Anne Arundel County (7.8 percent), Baltimore City (2.5 percent), and Baltimore County (2.0 percent).

Applications for review of criminal sentences amounted to 270, of which 20 were withdrawn by the applicants. There were 251 applications in 1978-79 and 273 applications in 1977-78. This year the original sentence was decreased in 13 instances and unchanged in 226. Two sentences were increased. Since the inception of the procedure to review criminal sentences in 1966, 3953 applications have been filed.

There were 26,644 juvenile causes recorded statewide in Fiscal 1980. This includes the 2527 causes filed in the District Court for Montgomery County. The four major jurisdictions and Baltimore City were responsible for 21,907 filings or 82.2 percent of the total juvenile caseload; a small increment of 0.3 percent over last year's figure of 21,044. The other 19 counties recorded 4737 juvenile filings or 17.8 percent of the total State caseload; a growth of 6.6 percent over last year's figure of 4442. Increases were noted in the following areas: Montgomery County (26.4 percent), Baltimore County (11.6 percent), Anne Arundel (2.4 percent) and Baltimore City (1.2 percent). A decline was registered in Prince George's County (1.9 percent). See Tables CC-7, CC-8, CC-9, and CC-10 in the Statistical Abstract for more details.

TERMINATIONS

Terminations reported totaled 152,720 in Fiscal 1980 for the four major categories of law, equity, criminal, and juvenile. This figure includes 2,708 juvenile terminations heard at the District Court level in Montgomery County. There were 129,460 case terminations reported in Fiscal 1979. A major effort was made in many jurisdictions to correct pending inventories in Fiscal 1980. Some cases terminated in prior years were reported

closed and counted in this year's figures. Thus, terminated figures and this analysis should be read with a certain amount of caution.

This year the 16,447 law cases terminated in the five major jurisdictions of Baltimore County, Anne Arundel County, Montgomery County, Prince George's County and Baltimore City accounted for 75.2 percent of the State's 21,860 law terminations. This represents a 7.6 percent inflation rate over the 15,279 cases terminated for these jurisdictions in Fiscal 1979. The other 19 counties terminated 5413 law cases; only 24.8 percent of the total law terminations but showing a 22.4 percent increase over the 4424 cases terminated last year. Statewide, the 21,860 law terminations climbed by 10.9 percent over last year's figure of 19,703. Surges were also found in the following areas: Anne Arundel County (24.0 percent), Baltimore County (18.8 percent), Prince George's County (6.3 percent), and Montgomery County (1.8 percent). Baltimore City showed a decline of 0.2 percent as compared to Fiscal 1979.

Case terminations in the equity category totaled 60,313 statewide; an increase of 20.6 percent over the 49,989 cases terminated last year. The four major jurisdictions and Baltimore City were responsible for 73.2

percent of the terminations or 44,131 cases; a growth rate of 22.8 percent over the 35,930 terminated last year.

The other 19 counties disposed of 16,182 cases or the other 26.8 percent and showed a 15.0 percent increase over the 14,059 terminated last year. Increments were noted in Baltimore City (79.6 percent), Baltimore County (21.7 percent), and Prince George's County (5.5 percent). Decreases were calculated for Montgomery County (21.9 percent) and Anne Arundel County (8.9 percent).

The number of criminal terminations in the State amounted to 41,836 in Fiscal 1980; a 15.3 percent rise over the 36,276 dispositions recorded last year. Baltimore City and the four major jurisdictions disposed of 34,607 cases; 82.7 percent of the total and showing an increase of 11.3 percent over the 31,085 terminated in Fiscal 1979. Nineteen other counties disposed of 7229 criminal cases this year compared to 5191 cases last year, resulting in a 39.3 percent inflation figure. The total share of the State's criminal terminations by the 19 other counties was 17.3 percent. Accelerations were registered in Montgomery County (22.0 percent), Baltimore County (14.9 percent), Baltimore City (12.4 percent) and Prince George's County (5.9 percent). A decrease of 4.5 percent was found in Anne Arundel County.

A total of 28,711 juvenile causes were terminated statewide and represents a 22.2 percent surge over the 23,492 terminations reported last year. This year's figure includes the 2708 juvenile causes terminated at the District Court level in Montgomery County. Baltimore City and the four major jurisdictions account for 82.6 percent of the total State dispositions and illustrate a 25.6 percent rise over the number terminated last year when 23,707 is compared to 18,875. The other 19 counties terminated 5004 juvenile causes this year as compared to 4617 last year; an increment of 8.4 percent. These counties were responsible for a small 17.4 percent of the State's juvenile terminations. Growth rates were noted in the following areas: Baltimore City (30.8 percent), Baltimore County (29.1 percent), Prince George's County (28.5 percent), and Montgomery County (21.3 percent). A decrease of 8.9 percent was calculated for Anne Arundel County. See Tables CC-7, CC-8, CC-9 and CC-10 in the Statistical Abstract for more details.

TRIALS

In Fiscal 1980 there were 21,860 dispositions of law cases statewide, of which 2416 were dispositions by trial and accounted for 11.0 percent of the total. The majority of the trials were non-jury (1622) compared to the number of jury trials (794). The law jury trial to disposition

ratio was lowest in Worcester County at 1.4 percent and highest in Kent County at 15.5 percent. The median was 5.3 percent which occurred in Allegany and Anne Arundel Counties. The median is the figure that occurs in the middle if all of the cases are ranked from the lowest to the highest number. Four metropolitan counties and Baltimore City were responsible for 544 or 68.5 percent of all law jury trials. The other 19 counties held 250 law jury trials, making up only 31.5 percent of the total.

Non-jury law trials were held in 1622 cases in Maryland. Anne Arundel County, Baltimore County, Montgomery County, Prince George's County, and Baltimore City heard 1202 or 74.1 percent of the total non-jury law trials, while the other 19 counties heard 420 or 25.9 percent of the cases. The law non-jury trial to disposition ratio was highest in Somerset County at 14.0 percent and lowest in Allegany County at 2.2 percent. The median law non-jury trial ratio was 7.0 percent and occurred in Cecil County.

The circuit courts reported 41,836 criminal terminations for the fiscal year. A total of 14,005 or 33.5 percent were disposed of by trial. Most trials (12,179 or 87.0 percent) were non-jury trials compared to the number of jury trials (1826 or 13.0 percent). The majority of jury trials (1195) were held in the four

largest counties and Baltimore City, contributing 65.4 percent to the total 1826 jury trials held in the State. The other 19 counties contributed to 34.6 percent of the total and recorded 631 jury trials. The criminal jury trial to disposition ratio was lowest in Baltimore County at 0.8 percent and highest in Somerset County at 20.1 percent. The median criminal jury trial to disposition ratio was 6.5 percent and occurred in Anne Arundel and Queen Anne's Counties.

The four largest jurisdictions and Baltimore City made up an even larger share, 10,200 or 83.7 percent of the total 12,179 non-jury criminal trials, than the previously mentioned jury trials. Nineteen other counties held 1979 or just 16.2 percent of the non-jury criminal trials. The criminal non-jury trial to disposition ratio was lowest in Charles County at 0.7 percent and highest in Carroll County at 58.8 percent. The median criminal non-jury trial to disposition ratio was 25.2 percent and occurred in Queen Anne's County.

During the year, 16,787 requests for criminal jury trials were prayed at the District Court level to the circuit court. This represents a 9.3 percent increase over the 15,358 requests made in Fiscal 1979 and a 39.9 percent surge over the 11,999 requests in Fiscal 1978.

For more detailed information, see Tables CC-11,
CC-12, CC-14, and CC-16 in the Statistical Abstract.

TABLE CC-1

LAW, EQUITY, CRIMINAL, AND JUVENILE
FILED, TERMINATED AND PENDING
IN THE FIRST JUDICIAL CIRCUIT OF MARYLAND

JULY 1, 1979 - JUNE 30, 1980
FISCAL 1980

	PENDING	FILED			TERMINATED			PENDING
	BEGINNING OF YEAR	CASES AND APPEALS	CASES	APPEALS	CASES AND APPEALS	CASES	APPEALS	END OF YEAR
TOTAL - FIRST CIRCUIT	2571	6128	5797	331	5964	5649	315	2735
LAW	755	962	792	170	993	822	171	724
EQUITY	1419	3522	3522	xx	3411	3411	xx	1530
CRIMINAL	306	1124	963	161	1002	858	144	428
JUVENILE	91	520	520	xx	558	558	xx	53
DORCHESTER COUNTY	562	1370	1259	111	1284	1173	111	648
LAW	135	201	112	89	185	98	87	151
EQUITY	348	839	839	xx	763	763	xx	424
CRIMINAL	48	157	135	22	141	117	24	64
JUVENILE	31	173	173	xx	195	195	xx	9
SOMERSET COUNTY	327	618	607	11	684	662	22	261
LAW	85	87	82	5	129	114	15	43
EQUITY	196	326	326	xx	345	345	xx	177
CRIMINAL	25	149	143	6	139	132	7	35
JUVENILE	21	56	56	xx	71	71	xx	6
WICOMICO COUNTY	838	2522	2411	111	2438	2327	111	922
LAW	244	248	201	47	247	199	48	245
EQUITY	449	1634	1634	xx	1560	1560	xx	523
CRIMINAL	124	482	418	64	472	409	63	134
JUVENILE	21	158	158	xx	159	159	xx	20
WORCESTER COUNTY	844	1618	1520	98	1558	1487	71	904
LAW	291	426	397	29	432	411	21	285
EQUITY	426	723	723	xx	743	743	xx	406
CRIMINAL	109	336	267	69	250	200	50	195
JUVENILE	18	133	133	xx	133	133	xx	18

TABLE CC-1

LAW, EQUITY, CRIMINAL, AND JUVENILE
FILED, TERMINATED AND PENDING
IN THE SECOND JUDICIAL CIRCUIT OF MARYLAND

JULY 1, 1979 - JUNE 30, 1980
FISCAL 1980

	PENDING	FILED			TERMINATED			PENDING
	BEGINNING OF YEAR	CASES AND APPEALS	CASES	APPEALS	CASES AND APPEALS	CASES	APPEALS	END OF YEAR
TOTAL - SECOND CIRCUIT	2260	4669	4473	196	4584	4389	195	2345
LAW	471	668	587	81	608	523	85	531
EQUITY	1257	2487	2487	xx	2516	2516	xx	1228
CRIMINAL	412	920	805	115	851	741	110	481
JUVENILE	120	594	594	xx	609	609	xx	105
CAROLINE COUNTY	306	618	600	18	641	621	20	283
LAW	47	75	68	7	67	60	7	55
EQUITY	200	378	378	xx	378	378	xx	200
CRIMINAL	38	100	89	11	118	105	13	20
JUVENILE	21	65	65	xx	78	78	xx	8
CECIL COUNTY	1004	2121	2024	97	1976	1890	86	1149
LAW	203	280	245	35	241	208	33	242
EQUITY	567	1143	1143	xx	1141	1141	xx	569
CRIMINAL	180	462	400	62	346	293	53	296
JUVENILE	54	236	236	xx	248	248	xx	42
KENT COUNTY	205	457	443	14	443	431	12	219
LAW	37	77	66	11	58	49	9	56
EQUITY	135	224	224	xx	225	225	xx	134
CRIMINAL	23	84	81	3	82	79	3	25
JUVENILE	10	72	72	xx	78	78	xx	4
QUEEN ANNE'S COUNTY	325	747	721	26	757	735	22	315
LAW	56	116	102	14	96	84	12	76
EQUITY	170	428	428	xx	453	453	xx	145
CRIMINAL	83	119	107	12	123	113	10	79
JUVENILE	16	84	84	xx	85	85	xx	15
TALBOT COUNTY	420	726	685	41	767	712	55	379
LAW	128	120	106	14	146	122	24	102
EQUITY	185	314	314	xx	319	319	xx	180
CRIMINAL	88	155	128	27	182	151	31	61
JUVENILE	19	137	137	xx	120	120	xx	36

TABLE CC-1

LAW, EQUITY, CRIMINAL, AND JUVENILE
FILED, TERMINATED AND PENDING
IN THE THIRD JUDICIAL CIRCUIT OF MARYLAND

JULY 1, 1979 - JUNE 30, 1980
FISCAL 1980

	PENDING	FILED			TERMINATED			PENDING
	BEGINNING OF YEAR	CASES AND APPEALS	CASES	APPEALS	CASES AND APPEALS	CASES	APPEALS	END OF YEAR
TOTAL - THIRD CIRCUIT	16,683	19,582	18,297	1285	21,304	20,038	1266	14,961
LAW	4597	3996	3497	499	3474	3026	448	5119
EQUITY	7916	8103	8103	xx	9646	9646	xx	6373
CRIMINAL	2789	4791	4005	786	5368	4550	818	2212
JUVENILE	1381	2692	2692	xx	2816	2816	xx	1257
BALTIMORE COUNTY	13,911	16,126	15,027	1099	17,751	16,695	1056	12,286
LAW	4079	3376	2962	414	2985	2611	374	4470
EQUITY	6549	6349	6349	xx	8006	8006	xx	4892
CRIMINAL	2301	4173	3488	685	4609	3927	682	1865
JUVENILE	982	2228	2228	xx	2151	2151	xx	1059
HARFORD COUNTY	2772	3456	3270	186	3553	3343	210	2675
LAW	518	620	535	85	489	415	74	649
EQUITY	1367	1754	1754	xx	1640	1640	xx	1481
CRIMINAL	488	618	517	101	759	623	136	347
JUVENILE	399	464	464	xx	665	665	xx	198

TABLE CC-1

LAW, EQUITY, CRIMINAL, AND JUVENILE
FILED, TERMINATED AND PENDING
IN THE FOURTH JUDICIAL CIRCUIT OF MARYLAND

JULY 1, 1979 - JUNE 30, 1980
FISCAL 1980

	PENDING	FILED			TERMINATED			PENDING
	BEGINNING OF YEAR	CASES AND APPEALS	CASES	APPEALS	CASES AND APPEALS	CASES	APPEALS	END OF YEAR
TOTAL - FOURTH CIRCUIT	4080	6052	5707	345	5390	5065	325	4742
LAW	1193	1110	943	167	792	669	123	1511
EQUITY	2221	2743	2743	xx	2332	2332	xx	2632
CRIMINAL	569	1145	967	178	1231	1029	202	483
JUVENILE	97	1054	1054	xx	1035	1035	xx	116
ALLEGANY COUNTY	1974	2112	1944	168	1680	1533	147	2406
LAW	763	442	372	70	225	188	37	980
EQUITY	1065	969	969	xx	767	767	xx	1267
CRIMINAL	116	277	179	98	286	176	110	107
JUVENILE	30	424	424	xx	402	402	xx	52
GARRETT COUNTY	364	725	708	17	710	687	23	379
LAW	103	154	151	3	149	143	6	108
EQUITY	215	350	350	xx	347	347	xx	218
CRIMINAL	32	93	79	14	84	67	17	41
JUVENILE	14	128	128	xx	130	130	xx	12
WASHINGTON COUNTY	1742	3215	3055	160	3000	2845	155	1957
LAW	327	514	420	94	418	338	80	423
EQUITY	941	1424	1424	xx	1218	1218	xx	1147
CRIMINAL	421	775	709	66	861	786	75	335
JUVENILE	53	502	502	xx	503	503	xx	52

TABLE CC-1

LAW, EQUITY, CRIMINAL, AND JUVENILE
FILED, TERMINATED AND PENDING
IN THE FIFTH JUDICIAL CIRCUIT OF MARYLAND

JULY 1, 1979 - JUNE 30, 1980
FISCAL 1980

	<u>PENDING</u>	<u>FILED</u>			<u>TERMINATED</u>			<u>PENDING</u>
	BEGINNING OF YEAR	CASES AND APPEALS	CASES	APPEALS	CASES AND APPEALS	CASES	APPEALS	END OF YEAR
TOTAL - FIFTH CIRCUIT	15,394	18,399	17,561	838	18,550	17,695	855	15,243
LAW	3604	3865	3499	366	4069	3735	334	3400
EQUITY	9003	8935	8935	xx	8357	8357	xx	9581
CRIMINAL	2027	3171	2699	472	3660	3139	521	1538
JUVENILE	760	2428	2428	xx	2464	2464	xx	724
ANNE ARUNDEL COUNTY	10360	12,671	12,189	482	11,834	11,422	412	11,197
LAW	2269	2554	2311	243	2569	2387	182	2254
EQUITY	6548	6652	6652	xx	5661	5661	xx	7539
CRIMINAL	993	1915	1676	239	2091	1861	230	817
JUVENILE	550	1550	1550	xx	1513	1513	xx	587
CARROLL COUNTY	2123	2612	2456	156	2868	2682	186	1867
LAW	464	506	455	51	596	537	59	374
EQUITY	996	1041	1041	xx	1047	1047	xx	990
CRIMINAL	548	594	489	105	697	570	127	445
JUVENILE	115	471	471	xx	528	528	xx	58
HOWARD COUNTY	2911	3116	2916	200	3848	3591	257	2179
LAW	871	805	733	72	904	811	93	772
EQUITY	1459	1242	1242	xx	1649	1649	xx	1052
CRIMINAL	486	662	534	128	872	708	164	276
JUVENILE	95	407	407	xx	423	423	xx	79

TABLE CC-1

LAW, EQUITY, CRIMINAL, AND JUVENILE
FILED, TERMINATED AND PENDING
IN THE SIXTH JUDICIAL CIRCUIT OF MARYLAND

JULY 1, 1979 - JUNE 30, 1980
FISCAL 1980

	PENDING	FILED			TERMINATED			PENDING
	BEGINNING OF YEAR	CASES AND APPEALS	CASES	APPEALS	CASES AND APPEALS	CASES	APPEALS	END OF YEAR
TOTAL - SIXTH CIRCUIT	15,359	15,180	14,619	561	12,706	12,195	511	17,833
LAW	4887	3485	3167	318	2573	2307	266	5799
EQUITY	7981	6901	6901	xx	5397	5397	xx	9485
CRIMINAL	1439	2083	1840	243	1833	1588	245	1689
JUVENILE	1052	2711	2711	xx	2903	2903	xx	860
FREDERICK COUNTY	1391	2688	2592	96	2558	2432	126	1521
LAW	238	370	331	39	312	274	38	296
EQUITY	906	1672	1672	xx	1578	1578	xx	1000
CRIMINAL	206	462	405	57	473	385	88	195
JUVENILE	41	184	184	xx	195	195	xx	30
MONTGOMERY COUNTY	13,968	12,492	12,027	465	10,148	9763	385	16,312
LAW	4649	3115	2836	279	2261	2033	228	5503
EQUITY	7075	5229	5229	xx	3819	3819	xx	8485
CRIMINAL	1233	1621	1435	186	1360	1203	157	1494
JUVENILE*	1011	2527	2527	xx	2708	2708	xx	830

*Juvenile causes processed at District Court level.

TABLE CC-1

LAW, EQUITY, CRIMINAL, AND JUVENILE
FILED, TERMINATED AND PENDING
IN THE SEVENTH JUDICIAL CIRCUIT OF MARYLAND

JULY 1, 1979 - JUNE 30, 1980
FISCAL 1980

	PENDING	FILED			TERMINATED			PENDING
	BEGINNING OF YEAR	CASES AND APPEALS	CASES	APPEALS	CASES AND APPEALS	CASES	APPEALS	END OF YEAR
TOTAL - SEVENTH CIRCUIT	17,145	25,419	24,686	733	23,866	23,144	722	18,698
LAW	3728	4256	3858	398	3566	3206	360	4418
EQUITY	9673	12,377	12,377	xx	10,726	10,726	xx	11,324
CRIMINAL	2271	3948	3613	335	4148	3786	362	2071
JUVENILE	1473	4838	4838	xx	5426	5426	xx	885
CALVERT COUNTY	493	1352	1308	44	1232	1176	56	613
LAW	111	222	198	24	219	186	33	114
EQUITY	241	613	613	xx	473	473	xx	381
CRIMINAL	84	170	150	20	217	194	23	37
JUVENILE	57	347	347	xx	323	323	xx	81
CHARLES COUNTY	1064	2497	2410	87	2449	2363	86	1112
LAW	181	333	298	35	283	254	29	231
EQUITY	435	847	847	xx	788	788	xx	494
CRIMINAL	352	876	824	52	951	894	57	277
JUVENILE	96	441	441	xx	427	427	xx	110
PRINCE GEORGE'S COUNTY	14,876	20,152	19,591	561	18,803	18,268	535	16,225
LAW	3297	3474	3148	326	2847	2566	281	3924
EQUITY	8523	10,159	10,159	xx	8717	8717	xx	9965
CRIMINAL	1779	2724	2489	235	2804	2550	254	1699
JUVENILE	1277	3795	3795	xx	4435	4435	xx	637
ST. MARY'S COUNTY	712	1418	1377	41	1382	1337	45	748
LAW	139	227	214	13	217	200	17	149
EQUITY	474	758	758	xx	748	748	xx	484
CRIMINAL	56	178	150	28	176	148	28	58
JUVENILE	43	255	255	xx	241	241	xx	57

TABLE CC-1

LAW, EQUITY, CRIMINAL, AND JUVENILE
FILED, TERMINATED AND PENDING
IN THE EIGHTH JUDICIAL CIRCUIT OF MARYLAND

JULY 1, 1979 - JUNE 30, 1980
FISCAL 1980

	PENDING	FILED			TERMINATED			PENDING
	BEGINNING OF YEAR	CASES AND APPEALS	CASES	APPEALS	CASES AND APPEALS	CASES	APPEALS	END OF YEAR
TOTAL - EIGHTH CIRCUIT BALTIMORE CITY	44,524	56,517	53,090	3427	60,356	57,117	3239	40,685
TOTAL - LAW COURTS	8079	6977	5639	1338	5785	4581	1204	9271
TOTAL - EQUITY COURTS	21,575	15,908	15,908	xx	17,928	17,928	xx	19,555
TOTAL - CRIMINAL COURTS	10,296	21,825	19,736	2089	23,743	21,708	2035	8378
TOTAL - JUVENILE COURT	4574	11,807	11,807	xx	12,900	12,900	xx	3481

TABLE CC-1

LAW, EQUITY, CRIMINAL, AND JUVENILE
FILED, TERMINATED AND PENDING
IN THE STATE OF MARYLAND

JULY 1, 1979 - JUNE 30, 1980
FISCAL 1980

	PENDING	FILED			TERMINATED			PENDING
	BEGINNING OF YEAR	CASES AND APPEALS	CASES	APPEALS	CASES AND APPEALS	CASES	APPEALS	END OF YEAR
TOTAL - STATE OF MARYLAND	118,014	151,946	144,230	7716	152,720	145,292	7428	117,240
LAW	27,314	25,319	21,982	3337	21,860	18,869	2991	30,773
EQUITY	61,045	60,976	60,976	xx	60,313	60,313	xx	61,708
CRIMINAL	20,107	39,007	34,628	4379	41,836	37,399	4437	17,278
JUVENILE*	9548	26,644	26,644	xx	28,711	28,711	xx	7481

*Includes Juvenile Causes processed by the District Court for Montgomery County.

TABLE CC-2

PERCENTAGES OF FILINGS

JULY 1, 1979 THROUGH JUNE 30, 1980

FISCAL 1980

	LAW		EQUITY		CRIMINAL		JUVENILE		TOTAL	
	Number	Percent	Number	Percent	Number	Percent	Number	Percent	Number	Percent
FIRST CIRCUIT	962	15.7	3522	57.5	1124	18.3	520	8.5	6128	100.0
Dorchester	201	14.7	839	61.2	157	11.4	173	12.7	1370	100.0
Somerset	87	14.1	326	52.8	149	24.1	56	9.0	618	100.0
Wicomico	248	9.9	1634	64.8	482	19.1	158	6.2	2522	100.0
Worcester	426	26.3	723	44.7	336	20.8	133	8.2	1618	100.0
SECOND CIRCUIT	668	14.3	2487	53.2	920	19.8	594	12.7	4669	100.0
Caroline	75	12.1	378	61.2	100	16.2	65	10.5	618	100.0
Cecil	280	13.2	1143	53.9	462	21.8	236	11.1	2121	100.0
Kent	77	16.8	224	49.0	84	18.4	72	15.8	457	100.0
Queen Anne's	116	15.5	428	57.3	119	16.0	84	11.2	747	100.0
Talbot	120	16.5	314	43.2	155	21.3	137	19.0	726	100.0
THIRD CIRCUIT	3996	20.4	8103	41.3	4791	24.5	2692	13.8	19,582	100.0
Baltimore	3376	21.0	6349	39.3	4173	25.9	2228	13.8	16,126	100.0
Harford	620	17.9	1754	50.8	618	17.9	464	13.4	3456	100.0
FOURTH CIRCUIT	1110	18.3	2743	45.3	1145	19.0	1054	17.4	6052	100.0
Allegany	442	21.0	969	45.9	277	13.1	424	20.0	2112	100.0
Garrett	154	21.2	350	48.2	93	12.9	128	17.7	725	100.0
Washington	514	16.0	1424	44.3	775	24.1	502	15.6	3215	100.0
FIFTH CIRCUIT	3865	21.0	8935	48.6	3171	17.2	2428	13.2	18,399	100.0
Anne Arundel	2554	20.2	6652	52.5	1915	15.1	1550	12.2	12,671	100.0
Carroll	506	19.3	1041	39.9	594	22.8	471	18.0	2612	100.0
Howard	805	25.9	1242	39.9	662	21.2	407	13.0	3116	100.0
SIXTH CIRCUIT	3485	23.0	6901	45.4	2083	13.7	2711	17.9	15,180	100.0
Frederick	370	13.8	1672	62.2	462	17.2	184	6.8	2688	100.0
Montgomery*	3115	25.0	5229	41.8	1621	13.0	2527	20.2	12,492	100.0
SEVENTH CIRCUIT	4256	16.8	12,377	48.7	3948	15.5	4838	19.0	25,419	100.0
Calvert	222	16.4	613	45.3	170	12.6	347	25.7	1352	100.0
Charles	333	13.3	847	34.0	876	35.1	441	17.6	2497	100.0
Prince George's	3474	17.2	10,159	50.4	2724	13.5	3795	18.9	20,152	100.0
St. Mary's	227	16.0	758	53.4	178	12.6	255	18.0	1418	100.0
EIGHTH CIRCUIT	6977	12.3	15,908	28.1	21,825	38.7	11,807	20.9	56,517	100.0
Baltimore City	6977	12.3	15,908	28.1	21,825	38.7	11,807	20.9	56,517	100.0
STATE	25,319	16.7	60,976	40.1	39,007	25.7	26,644	17.5	151,946	100.0

*Juvenile Causes heard at District Court level.

TABLE CC-3

CATEGORIES OF CASES FILED
JULY 1, 1979 - JUNE 30, 1980
FISCAL 1980

	Dorchester	Somerset	Wicomico	Worcester	Caroline	Cecil	Kent	Queen Anne's	Talbot	Baltimore	Harford	Allegany	Garrett	Washington	Anne Arundel	Carroll	Howard	Fredrick	Montgomery	Calvert	Charles	Prince George's	St. Mary's	Baltimore City	TOTAL
LAW - TOTALS	201	87	248	426	75	280	77	116	120	3376	620	442	154	514	2554	506	805	370	3115	222	333	3474	227	6977	25,319
TORT:																									
Motor Tort	29	3	41	18	16	46	23	13	21	1027	154	56	9	95	429	54	115	88	743	16	80	1012	64	2206	6358
Other Tort	14	6	18	9	3	8	3	4	28	367	37	39	14	27	116	24	39	40	402	5	20	437	10	741	2411
Consent Cases	2	1	1	1	0	1	2	1	0	24	3	1	2	11	4	4	3	8	38	1	5	39	1	57	210
CONTRACT	31	6	87	64	31	38	27	37	12	1150	152	111	49	201	785	152	269	126	1367	5	138	1314	68	1214	7434
CONFESSION JUDGMENT	24	4	33	51	7	72	5	34	24	171	74	58	12	39	635	189	276	41	128	25	34	94	21	143	2194
CONDEMNATION	1	2	8	1	6	2	0	3	0	63	3	2	1	12	17	2	10	3	40	36	4	39	19	46	320
OTHER LAW	8	59	12	248	5	72	6	8	21	90	107	105	64	35	319	13	15	24	117	105	15	189	24	970	2631
HABEAS CORPUS:																									
Writs by Prisoners	1	0	0	1	0	6	0	2	0	20	3	0	0	0	6	16	6	0	0	5	2	5	7	77	157
Other	2	1	1	4	0	0	0	0	0	50	2	0	0	0	0	1	0	1	1	0	0	19	0	185	267
APPEALS:																									
From District Court	8	2	19	11	3	6	3	2	12	155	32	34	2	25	65	20	28	9	91	4	17	170	1	227	946
From Administrative Agencies	81	3	28	18	4	29	8	12	2	259	53	36	1	69	178	31	44	30	188	20	18	156	12	1111	2391
EQUITY - TOTALS	839	326	1634	723	378	1143	224	428	314	6349	1754	969	350	1424	6652	1041	1242	1672	5229	613	847	10,159	758	15,908	60,976
ADOPTION	13	4	39	15	12	37	3	18	11	289	84	49	20	68	197	38	50	63	189	26	34	290	37	346	1932
GUARDIANSHIP	8	1	9	8	11	11	2	1	2	42	6	7	8	14	34	8	32	26	243	4	3	59	1	160	700
DIVORCE, NULLITY, MAINTENANCE	313	186	832	266	131	692	155	215	183	4210	952	649	216	905	3851	684	841	912	2892	272	430	6198	444	6015	32,444
PATERNITY	389	80	553	220	69	221	17	103	52	248	99	91	10	172	1011	20	42	207	122	106	134	1390	112	6579	12,047
FORECLOSURE	23	19	70	134	28	58	9	32	12	242	104	26	24	38	207	71	85	115	229	83	96	1077	59	832	3673
OTHER	93	36	131	80	127	124	38	59	54	1318	509	147	72	227	1352	220	192	349	1554	122	150	1145	105	1976	10,180
CRIMINAL - TOTALS	157	149	482	336	100	462	84	119	155	4173	618	277	93	775	1915	594	662	462	1621	170	876	2724	178	21,825	39,007
NONSUPPORT	0	0	0	2	0	0	0	0	0	696	8	7	0	0	169	0	0	0	1	4	0	0	0	968	1855
INDEMNITY	0	2	23	10	5	248	5	37	2	843	188	22	3	142	1055	15	11	4	796	32	427	1439	55	3015	8379
INFORMATION	79	91	247	109	63	39	52	57	87	873	19	101	62	225	167	205	334	252	112	104	50	26	61	3804	7219
APPEALS FROM DISTRICT COURT																									
Motor Vehicle	8	0	27	45	6	32	1	5	12	413	56	51	12	30	113	71	87	42	123	9	27	95	12	2089	4379
Criminal	14	6	37	24	5	30	2	7	15	272	45	47	2	36	126	34	41	15	63	11	25	140	16	226	388
POST CONVICTION	1	0	3	0	2	8	0	1	2	42	3	0	1	10	4	0	4	7	1	6	5	62	0	226	388
JURY TRIALS PRAYED FROM DISTRICT COURT	55	50	145	146	19	105	24	12	37	1034	299	49	13	332	281	269	185	141	522	8	342	962	34	11,723	16,787
JUVENILE - TOTALS	173	56	158	133	65	236	72	84	137	2228	464	424	128	502	1550	471	407	184	2527	347	441	3795	255	11,807	26,644
DELINQUENCY	128	52	119	120	45	217	45	39	106	1936	416	191	79	417	1288	411	387	153	2021	299	407	3244	215	11,102	23,437
C.I.N.A. or C.I.N.S.*	45	4	38	13	20	19	27	41	31	292	48	91	46	85	262	52	20	26	502	48	34	544	40	703	3031
ADULT	0	0	1	0	0	0	0	0	0	0	0	142	3	0	0	8	0	5	4	0	0	7	0	2	176

*Child in need of assistance or child in need of supervision.

TABLE CC-4

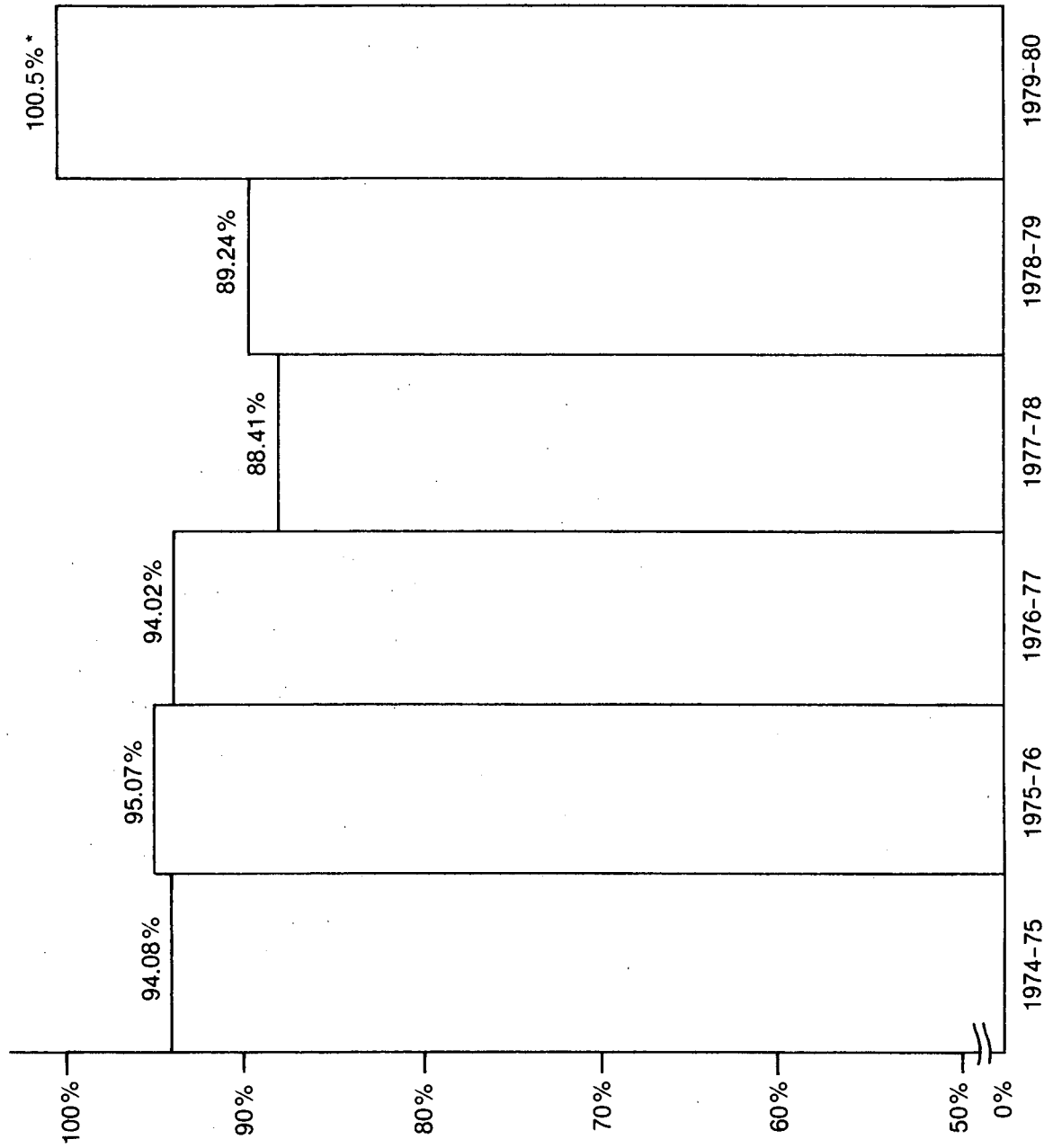
CATEGORIES OF CASES TERMINATED
JULY 1, 1979 - JUNE 30, 1980
FISCAL 1980

	Dorchester	Somerset	Wicomico	Worcester	Caroline	Cecil	Kent	Queen Anne's	Talbot	Baltimore	Harford	Allegany	Garrett	Washington	Anne Arundel	Carroll	Howard	Frederick	Montgomery	Calvert	Charles	Prince George's	St. Mary's	Baltimore City	TOTAL
LAW - TOTALS	185	129	247	432	67	241	58	96	146	2985	489	225	149	418	2569	596	904	312	2261	219	283	2847	217	5785	21,860
TORT:																									
Motor Tort	23	17	52	27	9	35	16	14	32	941	114	30	16	70	450	63	148	55	537	16	74	873	61	1834	5507
Other Tort	16	3	6	11	3	11	4	4	23	356	19	13	11	14	118	38	71	39	305	9	20	443	12	553	2102
Consent Cases	4	1	0	0	0	1	0	1	0	24	2	1	1	12	38	5	0	8	37	1	5	37	1	62	241
CONTRACT	22	10	81	61	26	22	16	17	14	857	94	47	31	187	764	169	230	110	931	10	104	923	55	836	5617
CONFESSED JUDGMENT	24	5	31	50	9	71	5	33	17	167	75	61	12	35	656	209	294	43	125	28	34	96	21	154	2255
CONDEMNATION	1	1	11	1	2	3	0	1	3	77	5	3	1	2	32	2	15	3	25	23	4	53	18	188	474
OTHER LAW	6	75	16	257	11	58	8	12	31	109	103	33	71	17	313	23	41	16	73	93	11	118	26	693	2214
HABEAS CORPUS:																									
Writs by Prisoners	0	1	0	1	0	7	0	2	2	24	2	0	0	1	16	23	12	0	0	6	2	8	6	77	190
Other	2	1	2	3	0	0	0	0	0	56	1	0	0	0	0	5	0	0	0	0	0	15	0	184	269
APPEALS:																									
From District Court	2	7	23	8	5	5	4	2	15	134	24	10	2	26	57	26	31	10	85	7	11	112	2	391	999
From Administrative Agencies	85	8	25	13	2	28	5	10	9	240	50	27	4	54	125	33	62	28	143	26	18	169	15	813	1992
EQUITY - TOTALS	763	345	1560	743	378	1141	225	453	319	8006	1640	767	347	1218	5661	1047	1649	1578	3819	473	788	8717	748	17,928	60,313
ADOPTION	12	3	30	16	9	34	2	18	15	249	78	39	21	61	175	39	65	59	157	17	40	756	36	263	2194
GUARDIANSHIP	6	4	5	8	6	18	2	2	3	60	8	4	7	11	35	8	24	27	199	5	1	132	4	97	676
DIVORCE, NULLITY, MAINTENANCE	296	172	791	272	118	718	146	228	185	5224	854	527	209	698	3321	727	1070	803	2271	198	385	5220	439	7145	32,017
PATERNITY	337	95	535	215	83	213	14	117	50	786	72	56	6	141	809	12	44	182	102	106	128	892	108	6200	11,303
FORECLOSURE	23	23	58	147	23	38	12	24	12	252	74	23	23	40	151	49	114	124	129	52	86	808	52	1077	3414
OTHER	89	48	141	85	139	120	49	64	54	1435	554	118	81	267	1170	212	332	383	961	95	148	909	109	3146	10,709
CRIMINAL - TOTALS	141	139	472	250	118	346	82	123	182	4609	759	286	84	861	2091	697	872	473	1360	217	951	2804	176	23,743	41,836
NONSUPPORT	0	0	0	3	0	0	0	0	0	851	10	9	0	0	245	1	2	1	3	1	0	0	0	884	2010
INDICTMENT	0	0	35	11	5	161	4	33	2	949	223	28	6	112	1180	13	104	2	647	57	476	1603	48	3473	9172
INFORMATION	68	90	244	96	76	41	54	59	105	1017	37	86	47	253	112	273	423	236	89	123	40	27	61	4526	8183
APPEALS FROM DISTRICT COURT																									
Motor Vehicle	9	0	25	37	8	27	2	3	13	400	75	59	9	33	116	82	108	45	106	13	31	99	12	2035	4437
Criminal	15	7	38	13	5	26	1	7	18	282	61	51	8	42	114	45	56	43	51	10	26	155	16	268	441
POST CONVICTION	0	0	5	0	1	10	0	2	4	54	3	0	2	6	10	5	5	6	1	8	4	47	0	268	441
JURY TRIALS PRAYED FROM DISTRICT COURT	49	42	125	90	23	81	21	19	40	1056	350	53	12	415	314	278	174	140	463	5	374	873	39	12,557	17,593
JUVENILE - TOTALS	195	71	159	133	78	248	78	85	120	2151	665	402	130	503	1513	528	423	195	2708	323	427	4435	241	12,900	28,711
DELINQUENCY	139	67	125	120	55	234	49	40	93	1864	600	182	79	419	1245	469	388	154	2140	271	402	3837	191	12,115	25,278
C.I.N.A. or C.I.N.S.*	56	4	34	13	23	14	29	41	27	286	65	85	50	83	268	57	35	37	554	52	25	598	50	783	3269
ADULT	0	0	0	0	0	0	0	4	0	1	0	135	1	1	0	2	0	4	14	0	0	0	0	2	164

*Child in need of assistance or child in need of supervision.

TABLE CC-5

TERMINATIONS AS A PERCENTAGE OF FILINGS
IN THE CIRCUIT COURTS



*On July 1, 1980, a new statistical record collection system was implemented. Thus, many unreported terminations were reported in the 1979-80 period so that the new system could be as reflective as possible of the existing balance as of July 1, 1980.

TABLE CC-6

FIVE YEAR COMPARATIVE TABLE

ALL CASES

FILINGS AND TERMINATIONS

	1975-76		1976-77		1977-78		1978-79		1979-80	
	F	T	F	T	F	T	F	T	F	T
FIRST CIRCUIT	4762	4983	5532	4905	5589	5877	5691	5482	6128	5964
Dorchester	1104	1155	1491	1344	1362	1384	1306	1224	1370	1284
Somerset	638	766	651	594	554	568	562	485	618	684
Wicomico	1650	1621	1924	1608	2036	2307	2251	2252	2522	2438
Worcester	1370	1441	1466	1359	1637	1618	1572	1521	1618	1558
SECOND CIRCUIT	3667	3203	3861	3950	4220	4042	4249	3883	4669	4584
Caroline	432	303	488	537	572	555	549	486	618	641
Cecil	1728	1537	1772	1710	2030	1998	1892	1824	2121	1976
Kent	484	486	534	531	464	429	399	383	457	443
Queen Anne's	488	444	566	589	531	510	753	670	747	757
Talbot	535	433	501	583	623	550	656	520	726	767
THIRD CIRCUIT	16,137	15,137	17,454	17,024	18,020	16,182	19,248	18,172	19,582	21,304
Baltimore	13,377	12,291	14,259	14,061	14,723	13,208	15,648	14,772	16,126	17,751
Harford	2760	2846	3195	2963	3297	2974	3600	3400	3456	3553
FOURTH CIRCUIT	4620	4264	4564	3756	5120	4526	5519	4817	6052	5390
Allegany	1824	1370	1796	1432	1873	1422	2073	1730	2112	1680
Garrett	556	547	600	549	645	614	640	590	725	710
Washington	2240	2347	2168	1775	2602	2490	2806	2497	3215	3000
FIFTH CIRCUIT	13,417	11,775	15,852	14,326	17,553	15,133	17,956	16,205	18,399	18,550
Anne Arundel	9666	8515	11,580	10,734	12,705	11,443	13,123	12,136	12,671	11,834
Carroll	1590	1316	1777	1687	2044	1628	2221	1610	2612	2868
Howard	2161	1944	2495	1905	2804	2062	2612	2459	3116	3848
SIXTH CIRCUIT	13,656	12,135	14,023	13,519	13,669	12,229	13,571	12,754	15,180	12,706
Frederick	1889	1914	1820	1775	2353	2286	2472	2294	2688	2558
Montgomery*	11,767	10,221	12,203	11,744	11,316	9943	11,099	10,460	12,492	10,148
SEVENTH CIRCUIT	20,177	17,834	20,838	19,962	22,496	20,380	23,468	21,384	25,419	23,866
Calvert	764	831	944	846	994	947	1013	1080	1352	1232
Charles	1759	1731	1554	1451	1876	1810	2212	1926	2497	2449
Prince George's	16,565	14,241	17,028	16,368	18,278	16,378	19,054	17,038	20,152	18,803
St. Mary's	1089	1031	1312	1297	1348	1245	1189	1340	1418	1382
EIGHTH CIRCUIT	47,839	48,411	53,812	50,970	48,363	41,448	55,364	46,763	56,517	60,356
Baltimore City	47,839	48,411	53,812	50,970	48,363	41,448	55,364	46,763	56,517	60,356
STATE	124,275	117,742	135,936	128,412	135,030	119,817	145,066	129,460	151,946	152,720

*Includes juvenile causes heard at District Court level.

TABLE CC-7

FIVE YEAR COMPARATIVE TABLE

LAW CASES

FILINGS AND TERMINATIONS

	1975-76		1976-77		1977-78		1978-79		1979-80	
	F	T	F	T	F	T	F	T	F	T
FIRST CIRCUIT	685	766	885	717	934	952	960	867	962	993
Dorchester	117	149	143	133	181	162	191	169	201	185
Somerset	76	90	112	97	81	62	94	72	87	129
Wicomico	163	168	248	171	205	235	224	189	248	247
Worcester	329	359	382	316	467	466	451	437	426	432
SECOND CIRCUIT	536	498	589	571	735	652	618	573	668	608
Caroline	41	29	61	52	56	54	51	43	75	67
Cecil	254	256	309	317	421	383	306	297	280	241
Kent	58	60	66	54	73	60	54	68	77	58
Queen Anne's	67	64	86	72	76	86	112	106	116	96
Talbot	116	89	67	76	109	69	95	59	120	146
THIRD CIRCUIT	2832	2590	2998	2827	3074	2479	3399	3023	3996	3474
Baltimore	2461	2208	2562	2419	2621	2066	2889	2513	3376	2985
Harford	371	382	436	408	453	413	510	510	620	489
FOURTH CIRCUIT	737	578	846	586	1015	842	1020	790	1110	792
Allegany	325	206	412	243	445	253	437	289	442	225
Garrett	111	97	99	89	141	129	142	123	154	149
Washington	301	275	335	254	429	460	441	378	514	418
FIFTH CIRCUIT	2087	1843	2520	2374	3686	3084	3530	2913	3865	4069
Anne Arundel	1245	1154	1657	1661	2548	2259	2434	2072	2554	2569
Carroll	304	226	384	311	408	321	441	325	506	596
Howard	538	463	515	402	730	504	655	516	805	904
SIXTH CIRCUIT	2952	3347	2872	2570	2905	2615	2997	2470	3485	2573
Frederick	312	353	216	283	268	305	305	249	370	312
Montgomery	2640	2994	2656	2287	2637	2310	2692	2221	3115	2261
SEVENTH CIRCUIT	3163	2915	3126	3611	3260	2940	3548	3273	4256	3566
Calvert	152	172	150	152	123	129	159	157	222	219
Charles	191	211	207	207	189	212	279	224	333	283
Prince George's	2599	2346	2578	3005	2780	2425	2923	2679	3474	2847
St. Mary's	221	186	191	247	168	174	187	213	227	217
EIGHTH CIRCUIT	5732	7343	5536	6485	5480	5813	5382	5794	6977	5785
Baltimore City	5732	7343	5536	6485	5480	5813	5382	5794	6977	5785
STATE	18,724	19,880	19,372	19,741	21,089	19,350	21,454	19,703	25,319	21,860

TABLE CC-8

FIVE YEAR COMPARATIVE TABLE

EQUITY CASES

FILINGS AND TERMINATIONS

	1975-76		1976-77		1977-78		1978-79		1979-80	
	F	T	F	T	F	T	F	T	F	T
FIRST CIRCUIT	2256	2435	2659	2357	3142	3069	3338	3249	3522	3411
Dorchester	644	645	906	808	787	796	826	772	839	763
Somerset	225	359	308	250	334	335	312	286	326	345
Wicomico	825	845	851	732	1319	1270	1442	1486	1634	1560
Worcester	562	586	594	567	702	668	758	705	723	743
SECOND CIRCUIT	1812	1497	1851	1855	2035	1945	2239	2030	2487	2516
Caroline	248	182	278	312	336	306	341	303	378	378
Cecil	926	779	850	786	935	952	970	929	1143	1141
Kent	212	208	223	213	211	187	223	186	224	225
Queen Anne's	183	148	258	250	260	235	393	344	428	453
Talbot	243	180	242	294	293	265	312	268	314	319
THIRD CIRCUIT	7073	6155	7641	7176	8085	7287	8294	8247	8103	9646
Baltimore	5749	4796	6182	5830	6406	5718	6505	6580	6349	8006
Harford	1324	1359	1459	1346	1679	1569	1789	1667	1754	1640
FOURTH CIRCUIT	1881	1651	1924	1405	2313	1911	2402	2131	2743	2332
Allegany	794	574	719	541	815	581	900	737	969	767
Garrett	190	161	232	197	272	240	299	266	350	347
Washington	897	916	973	667	1226	1090	1203	1128	1424	1218
FIFTH CIRCUIT	5449	4461	6928	5806	7991	6231	9143	7774	8935	8357
Anne Arundel	4132	3345	5300	4577	6105	4958	7098	6215	6652	5661
Carroll	572	493	750	631	837	585	942	694	1041	1047
Howard	745	623	878	598	1049	688	1103	865	1242	1649
SIXTH CIRCUIT	5247	4116	6283	5461	6544	5365	6636	6372	6901	5397
Frederick	1029	1060	1164	1026	1540	1443	1547	1480	1672	1578
Montgomery	4218	3056	5119	4435	5004	3922	5089	4892	5229	3819
SEVENTH CIRCUIT	8396	6376	8222	7199	9742	8449	11,613	10,204	12,377	10,726
Calvert	355	361	322	336	431	395	482	476	613	473
Charles	727	713	606	506	675	586	769	764	847	788
Prince George's	6809	4842	6567	5687	7880	6750	9725	8261	10,159	8717
St. Mary's	505	460	727	670	756	718	637	703	758	748
EIGHTH CIRCUIT	11,320	7893	11,146	8689	13,779	9080	15,945	9982	15,908	17,928
Baltimore City	11,320	7893	11,146	8689	13,779	9080	15,945	9982	15,908	17,928
STATE	43,434	34,584	46,654	39,948	53,631	43,337	59,610	49,989	60,976	60,313

TABLE CC-9

FIVE YEAR COMPARATIVE TABLE

CRIMINAL CASES

FILINGS AND TERMINATIONS

	1975-76		1976-77		1977-78		1978-79		1979-80	
	F	T	F	T	F	T	F	T	F	T
FIRST CIRCUIT	1253	1277	1318	1136	977	1309	890	887	1124	1002
Dorchester	185	204	192	155	206	225	139	148	157	141
Somerset	246	242	175	180	86	117	94	81	149	139
Wicomico	449	452	597	464	351	618	405	390	482	472
Worcester	373	379	354	337	334	349	252	268	336	250
SECOND CIRCUIT	823	766	821	858	897	866	773	680	920	851
Caroline	88	51	83	88	101	117	70	56	100	118
Cecil	351	323	379	373	435	407	363	356	462	346
Kent	104	113	134	139	120	119	69	72	84	82
Queen Anne's	176	179	143	159	124	123	137	115	119	123
Talbot	104	100	82	99	117	100	134	81	155	182
THIRD CIRCUIT	3890	4084	4686	4941	4681	4476	4939	4581	4791	5368
Baltimore	3369	3576	4006	4344	4103	3884	4258	4013	4173	4609
Harford	521	508	680	597	578	592	681	568	618	759
FOURTH CIRCUIT	899	1056	795	822	812	774	1053	848	1145	1231
Allegany	245	205	240	259	204	177	288	256	277	286
Garrett	136	165	75	73	89	94	81	81	93	84
Washington	518	686	480	490	519	503	684	511	775	861
FIFTH CIRCUIT	3469	3333	3910	3801	3311	3078	3123	3090	3171	3660
Anne Arundel	2456	2378	2841	2893	2274	2215	2078	2189	1915	2091
Carroll	454	357	328	360	435	404	450	213	594	697
Howard	559	598	741	548	602	459	595	688	662	872
SIXTH CIRCUIT	2185	1981	1800	2015	1935	1740	1714	1443	2083	1833
Frederick	353	329	286	332	369	324	395	328	462	473
Montgomery	1832	1652	1514	1683	1566	1416	1319	1115	1621	1360
SEVENTH CIRCUIT	3113	2908	3400	3095	3604	2921	3650	3626	3948	4148
Calvert	116	120	260	205	234	183	179	246	170	217
Charles	391	371	385	367	480	501	770	545	876	951
Prince George's	2453	2255	2641	2411	2734	2106	2533	2647	2724	2804
St. Mary's	153	162	114	112	156	131	168	188	178	176
EIGHTH CIRCUIT	18,112	17,505	26,441	24,139	19,512	17,348	22,374	21,121	21,825	23,743
Baltimore City	18,112	17,505	26,441	24,139	19,512	17,348	22,374	21,121	21,825	23,743
STATE	33,744	32,910	43,171	40,807	35,729	32,512	38,516	36,276	39,007	41,836

TABLE CC-10

FIVE YEAR COMPARATIVE TABLE

JUVENILE CAUSES

FILINGS AND TERMINATIONS

	1975-76		1976-77		1977-78		1978-79		1979-80	
	F	T	F	T	F	T	F	T	F	T
FIRST CIRCUIT	568	505	670	695	536	574	503	479	520	558
Dorchester	158	157	250	248	188	201	150	135	173	195
Somerset	91	75	56	67	53	54	62	46	56	71
Wicomico	213	156	228	241	161	184	180	187	158	159
Worcester	106	117	136	339	134	135	111	111	133	133
SECOND CIRCUIT	496	442	600	666	553	579	619	600	594	609
Caroline	55	41	66	85	79	78	87	84	65	78
Cecil	197	179	234	234	239	256	253	242	236	248
Kent	110	105	111	125	60	63	53	57	72	78
Queen Anne's	62	53	79	108	71	66	111	105	84	85
Talbot	72	64	110	114	104	116	115	112	137	120
THIRD CIRCUIT	2342	2308	2129	2080	2180	1940	2616	2321	2692	2816
Baltimore	1798	1711	1509	1468	1593	1540	1996	1666	2228	2151
Harford	544	597	620	612	587	400	620	655	464	665
FOURTH CIRCUIT	1103	979	999	943	980	999	1044	1048	1054	1035
Allegany	460	385	425	389	409	411	448	448	424	402
Garrett	119	124	194	190	143	151	118	120	128	130
Washington	524	470	380	364	428	437	478	480	502	503
FIFTH CIRCUIT	2412	2138	2494	2345	2565	2740	2160	2428	2428	2464
Anne Arundel	1833	1638	1782	1603	1778	2011	1513	1660	1550	1513
Carroll	260	240	351	385	364	318	388	378	471	528
Howard	319	260	361	357	423	411	259	390	407	423
SIXTH CIRCUIT	3272	2691	3068	3473	2285	2509	2224	2469	2711	2903
Frederick	195	172	154	134	176	214	225	237	184	195
Montgomery*	3077	2519	2914	3339	2109	2295	1999	2232	2527	2708
SEVENTH CIRCUIT	5505	5635	6090	6057	5890	6070	4657	4281	4838	5426
Calvert	141	178	212	153	206	240	193	201	347	323
Charles	450	436	356	371	532	511	394	393	441	427
Prince George's	4704	4798	5242	5265	4884	5097	3873	3451	3795	4435
St. Mary's	210	223	280	268	268	222	197	236	255	241
EIGHTH CIRCUIT	12,675	15,670	10,689	11,657	9592	9207	11,663	9866	11,807	12,900
Baltimore City	12,675	15,670	10,689	11,657	9592	9207	11,663	9866	11,807	12,900
STATE	28,373	30,368	26,739	27,916	24,581	24,618	25,486	23,492	26,644	28,711

*Includes juvenile causes heard at District Court level.

TABLE CC-11

CASES TRIED BY COUNTY AND CIRCUIT

JULY 1, 1979 - JUNE 30, 1980
FISCAL 1980

	TOTALS	LAW		EQUITY	CRIMINAL	
		JURY	NON-JURY		JURY	NON-JURY
FIRST CIRCUIT	1837	40	51	1108	98	540
Dorchester	449	5	12	298	17	117 ^{b,d}
Somerset	196	8	18	75	28	67
Wicomico	995	21	10	661	50	253
Worcester	197	6	11	74	3	103 ^b
SECOND CIRCUIT	1238	35	35	887	86	195
Caroline	96	1	0	49	7	39
Cecil	830	13	17	633	56	111 ^e
Kent	50	9	5	23	10	3
Queen Anne's	229	7	7	176	8	31 ^d
Talbot	33	5	6	6	5	11
THIRD CIRCUIT	8190	101	252	3230	106	4501
Baltimore	7515	85	204	2871 ^f	35	4320 ^{a,c}
Harford	675	16	48	359	71	181
FOURTH CIRCUIT	1070	33	40	600	140	257
Allegany	524	12	5	276	37	194 ^e
Garrett	182	5	11	154	2	10
Washington	364	16	24	170	101	53
FIFTH CIRCUIT	4604	183	318	2502	289	1312
Anne Arundel	2272	135	167	1294 ^f	137	539
Carroll	1004	17	56	507 ^f	14	410 ^e
Howard	1328	31	95	701 ^f	138	363 ^e
SIXTH CIRCUIT	2683	71	145	2193	206	68
Frederick	324	16	19	257	26	6 ^e
Montgomery	2359	55	126	1936 ^f	180	62
SEVENTH CIRCUIT	5248	238	162	4375	336	137
Calvert	148	13	28	79	14	14
Charles	324	21	32	230	34	7
Prince George's	4483	176	86	3833 ^f	278	110
St. Mary's	293	28	16	233	10	6
EIGHTH CIRCUIT	8213	93	619	1767	565	5169
Baltimore City	8213	93	619	1767 ^f	565	5169
STATE	33,083	794	1622	16,662	1826	12,179

^aReports stet case as non-jury trial.

^bSometimes reports stet case as non-jury trial.

^cReports nolle prosequi case as non-jury trial.

^dSometimes reports nolle prosequi case as non-jury trial.

^eReports pleas as non-jury trial.

^fIncludes hearings before a master.

TABLE CC-12

CASES TRIED BY MAJOR JURISDICTION*

JULY 1, 1979 - JUNE 30, 1980
FISCAL 1980

	<u>State</u>	<u>Baltimore City</u>	<u>All Counties</u>	<u>Four Largest Counties</u>	<u>Other 19 Counties</u>
LAW					
Jury	794	93	701	451	250
Non-Jury	1622	619	1003	583	420
EQUITY	16,662	1767	14,895	9934	4961
CRIMINAL					
Jury	1826	565	1261	630	631
Non-Jury	12,179	5169	7010	5031	1979

*See footnotes on Tables CC-17 and CC-18.

TABLE CC-13

PERCENTAGE OF CIRCUIT COURT CASE FILINGS ORIGINATING FROM THE DISTRICT COURT

JULY 1, 1979 - JUNE 30, 1980
FISCAL 1980

	Prayers for Jury Trials and Appeals	Circuit Court Filings	% of Circuit Court Filings that Are Jury Trials and Appeals
FIRST CIRCUIT			
Dorchester	85	1370	6.20
Somerset	58	618	9.38
Wicomico	228	2522	9.04
Worcester	226	1618	13.97
SECOND CIRCUIT			
Caroline	33	618	5.34
Cecil	173	2121	8.15
Kent	30	457	6.56
Queen Anne's	26	747	3.48
Talbot	76	726	10.47
THIRD CIRCUIT			
Baltimore	1874	16,126	11.62
Harford	432	3456	12.50
FOURTH CIRCUIT			
Allegany	181	2112	8.57
Garrett	29	725	4.00
Washington	423	3215	13.16
FIFTH CIRCUIT			
Anne Arundel	585	12,671	4.62
Carroll	394	2612	15.08
Howard	341	3116	10.94
SIXTH CIRCUIT			
Frederick	207	2688	7.70
Montgomery*	799	9965	8.02
SEVENTH CIRCUIT			
Calvert	32	1352	2.37
Charles	411	2497	16.46
Prince George's	1367	20,152	6.78
St. Mary's	63	1418	4.44
EIGHTH CIRCUIT			
Baltimore City	14,265	56,517	25.24
STATE			
	22,338	149,419	14.95

*Excludes juvenile statistics for Montgomery County.

TABLE CC-14

LAW CASES

RATIO OF TRIALS TO DISPOSITIONS

JULY 1, 1979 - JUNE 30, 1980
FISCAL 1980

	<u>DISPOSITIONS</u>	<u>TRIALS</u>	<u>PERCENTAGES</u>	<u>JURY</u>	<u>%</u>	<u>NON-JURY</u>	<u>%</u>
FIRST CIRCUIT							
Dorchester	185	17	9.2	5	2.7%	12	6.5%
Somerset	129	26	20.2	8	6.2%	18	14.0%
Wicomico	247	31	12.5	21	8.5%	10	4.0%
Worcester	432	17	3.9	6	1.4%	11	2.5%
SECOND CIRCUIT							
Caroline	67	1	1.5	1	1.5%	0	-
Cecil	241	30	12.4	13	5.4%	17	7.0%
Kent	58	14	24.1	9	15.5%	5	8.6%
Queen Anne's	96	14	14.6	7	7.3%	7	7.3%
Talbot	146	11	7.5	5	3.4%	6	4.1%
THIRD CIRCUIT							
Baltimore	2985	289	9.6	85	2.8%	204	6.8%
Harford	489	64	13.1	16	3.3%	48	9.8%
FOURTH CIRCUIT							
Allegany	225	17	7.5	12	5.3%	5	2.2%
Garrett	149	16	10.7	5	3.3%	11	7.4%
Washington	418	40	9.5	16	3.8%	24	5.7%
FIFTH CIRCUIT							
Anne Arundel	2569	302	11.8	135	5.3%	167	6.5%
Carroll	596	73	12.2	17	2.8%	56	9.4%
Howard	904	126	13.9	31	3.4%	95	10.5%
SIXTH CIRCUIT							
Frederick	312	35	11.2	16	5.1%	19	6.1%
Montgomery	2261	181	8.0	55	2.4%	126	5.6%
SEVENTH CIRCUIT							
Calvert	219	41	18.7	13	5.9%	28	12.8%
Charles	283	53	18.7	21	7.4%	32	11.3%
Prince George's	2847	262	9.2	176	6.2%	86	3.0%
St. Mary's	217	44	20.3	28	12.9%	16	7.4%
EIGHTH CIRCUIT							
Baltimore City	5785	712	12.3	93	1.6%	619	10.7%
STATE	21,860	2416	11.0	794	3.6%	1622	7.4%

TABLE CC-15

FIVE YEAR COMPARATIVE TABLE

LAW CASES TRIED

	1975-76	1976-77	1977-78	1978-79	1979-80
FIRST CIRCUIT					
Dorchester	41	23	22	23	17
Somerset	14	5	4	5	26
Wicomico	48	24	42	22	31
Worcester	29	21	27	27	17
SECOND CIRCUIT					
Caroline	7	1	4	9	1
Cecil	33	42	50	23	30
Kent	23	13	17	14	14
Queen Anne's	10	25	24	9	14
Talbot	14	15	12	2	11
THIRD CIRCUIT					
Baltimore	633	450	280	212	289
Harford	74	101	110	77	64
FOURTH CIRCUIT					
Allegany	21	5	16	21	17
Garrett	17	16	15	17	16
Washington	54	33	47	48	40
FIFTH CIRCUIT					
Anne Arundel	227	207	253	235	302
Carroll	47	77	36	36	73
Howard	149	78	48	118	126
SIXTH CIRCUIT					
Frederick	35	30	44	44	35
Montgomery	308	312	288	269	181
SEVENTH CIRCUIT					
Calvert	43	40	11	18	41
Charles	36	54	43	42	53
Prince George's	528	453	303	260	262
St. Mary's	42	68	37	26	44
EIGHTH CIRCUIT					
Baltimore City	1200	446	660	922	712
STATE	3633	2539	2393	2479	2416

TABLE CC-16

CRIMINAL CASES

RATIO OF TRIALS TO DISPOSITIONS

JULY 1, 1979 - JUNE 30, 1980
FISCAL 1980

	<u>DISPOSITIONS</u>	<u>TRIALS</u>	<u>PERCENTAGES</u>	<u>JURY</u>	<u>%</u>	<u>NON-JURY</u>	<u>%</u>
FIRST CIRCUIT							
Dorchester	141	134	95.0	17	12.0%	117	83.0%
Somerset	139	95	68.3	28	20.1%	67	48.2%
Wicomico	472	303	64.2	50	10.6%	253	53.6%
Worcester	250	106	42.4	3	1.2%	103	41.2%
SECOND CIRCUIT							
Caroline	118	46	38.9	7	5.9%	39	33.0%
Cecil	346	167	48.3	56	16.2%	111	32.1%
Kent	82	13	15.8	10	12.2%	3	3.6%
Queen Anne's	123	39	31.7	8	6.5%	31	25.2%
Talbot	182	16	8.7	5	2.7%	11	6.0%
THIRD CIRCUIT							
Baltimore	4609	4355	94.5	35	.8%	4320	93.7%
Harford	759	252	33.2	71	9.4%	181	23.8%
FOURTH CIRCUIT							
Allegany	286	231	80.7	37	12.9%	194	67.8%
Garrett	84	12	14.3	2	2.4%	10	11.9%
Washington	861	154	17.9	101	11.7%	53	6.2%
FIFTH CIRCUIT							
Anne Arundel	2091	676	32.3	137	6.5%	539	25.8%
Carroll	697	424	60.8	14	2.0%	410	58.8%
Howard	872	501	57.4	138	15.8%	363	41.6%
SIXTH CIRCUIT							
Frederick	473	32	6.8	26	5.5%	6	1.3%
Montgomery	1360	242	17.7	180	13.2%	62	4.5%
SEVENTH CIRCUIT							
Calvert	217	28	12.8	14	6.4%	14	6.4%
Charles	951	41	4.3	34	3.6%	7	.7%
Prince George's	2804	388	13.8	278	9.9%	110	3.9%
St. Mary's	176	16	9.1	10	5.7%	6	3.4%
EIGHTH CIRCUIT							
Baltimore City	23,743	5734	24.2	565	2.4%	5169	21.8%
STATE	41,836	14,005	33.5	1826	4.4%	12,179	29.1%

TABLE CC-17

FIVE YEAR COMPARATIVE TABLE

CRIMINAL CASES TRIED

	1975-76	1976-77	1977-78	1978-79	1979-80
FIRST CIRCUIT					
Dorchester	111	219	201	138	134 ^{b,d}
Somerset	125	53	39	65	95
Wicomico	295	214	337	231	303
Worcester	200	188	246	77	106 ^b
SECOND CIRCUIT					
Caroline	27	62	90	41	46
Cecil	160	176	274	159	167 ^e
Kent	53	50	20	14	13
Queen Anne's	69	60	52	35	39 ^d
Talbot	102	73	64	14	16
THIRD CIRCUIT					
Baltimore	1624	1857	1457	2862	4355 ^{a,c}
Harford	415	327	244	198	252
FOURTH CIRCUIT					
Allegany	180	206	162	227	231 ^e
Garrett	83	44	58	41	12
Washington	292	124	156	146	154
FIFTH CIRCUIT					
Anne Arundel	1295	744	606	616	676
Carroll	259	243	329	175	424 ^e
Howard	370	51	126	495	501 ^e
SIXTH CIRCUIT					
Frederick	188	37	52	40	32 ^e
Montgomery	741	330	354	305	242
SEVENTH CIRCUIT					
Calvert	84	68	42	30	28
Charles	133	38	58	39	41
Prince George's	1236	357	364	367	388
St. Mary's	145	43	40	17	16
EIGHTH CIRCUIT					
Baltimore City	8992	4417	3418	5550	5734
STATE	17,179	9981	8789	11,882	14,005

^aReports stet case as non-jury trial.

^bSometimes reports stet case as non-jury trial.

^cReports nolle prosequi case as non-jury trial.

^dSometimes reports nolle prosequi case as non-jury trial.

^eReports pleas as non-jury trial.

TABLE CC-18

FIVE YEAR COMPARATIVE TABLE

EQUITY HEARINGS

	1975-76	1976-77	1977-78	1978-79	1979-80
FIRST CIRCUIT					
Dorchester	289	497	369	240	298
Somerset	195	50	91	62	75
Wicomico	54	53	419	619	661
Worcester	90	127	191	133	74
SECOND CIRCUIT					
Caroline	44	47	43	36	49
Cecil	397	154	64	357	633
Kent	30	6	2	3	23
Queen Anne's	12	38	30	97	176
Talbot	92	21	27	12	6
THIRD CIRCUIT					
Baltimore	2757	3223	3018	2858	2871*
Harford	510	100	65	90	359
FOURTH CIRCUIT					
Allegany	137	92	51	38	276
Garrett	47	38	55	64	154
Washington	273	11	23	7	170
FIFTH CIRCUIT					
Anne Arundel	732	143	613	862	1294*
Carroll	261	383	327	357	507*
Howard	405	364	358	490	701*
SIXTH CIRCUIT					
Frederick	681	42	39	189	257
Montgomery	1739	1914	1869	2005	1936*
SEVENTH CIRCUIT					
Calvert	46	24	34	59	79
Charles	250	36	117	175	230
Prince George's	2712	3459	3906	3804	3833*
St. Mary's	99	152	99	140	233
EIGHTH CIRCUIT					
Baltimore City	2301	3434	2920	2431	1767*
STATE	14,153	14,408	14,730	15,128	16,662

*Includes hearings before a master.

TABLE CC-19

AVERAGE DAYS FROM FILING TO TRIAL OR HEARING
IN THE METROPOLITAN JURISDICTIONS

FISCAL 1980

	<u>LAW</u>	<u>EQUITY</u>	<u>CRIMINAL</u>	<u>JUVENILE</u>
Baltimore City	SC 598 CC 333 CP 608	CC1 188 CC2 187	137	69
Anne Arundel County	357	158	105	72
Baltimore County	576	188	132	58
Montgomery County	408	236	119	292
Prince George's County	487	196	139	25

TABLE CC-20

AVERAGE DAYS FROM FILING TO TRIAL OR HEARING

	LAW			EQUITY			CRIMINAL			JUVENILE		
	1977-78	1978-79	1979-80	1977-78	1978-79	1979-80	1977-78	1978-79	1979-80	1977-78	1978-79	1979-80
FIRST CIRCUIT												
Dorchester	217	480	403	89	96	79	116	103	91	23	23	29
Somerset	309	329	406	111	72	81	88	67	79	16	38	31
Wicomico	548	344	351	39	35	27	144	95	21	23	16	19
Worcester	681	489	716	77	77	130	96	106	102	34	38	69
SECOND CIRCUIT												
Caroline	283	258	50	187	139	143	70	81	88	44	37	30
Cecil	207	333	290	154	125	114	101	107	123	33	35	35
Kent	206	276	296	23	205	232	80	120	99	34	37	47
Queen Anne's	328	207	273	158	37	40	170	141	102	43	41	36
Talbot	294	170	291	163	104	83	89	90	117	37	31	32
THIRD CIRCUIT												
Baltimore	560	541	576	196	197	188	111	112	132	126	71	58
Harford	477	441	311	343	349	241	191	197	193	109	74	62
FOURTH CIRCUIT												
Allegany	277	322	528	276	84	123	72	71	88	19	16	24
Garrett	210	142	319	91	100	108	145	121	436	49	26	31
Washington	732	267	384	191	337	96	122	149	169	33	24	22
FIFTH CIRCUIT												
Anne Arundel	362	348	357	166	154	158	108	114	105	36	45	72
Carroll	175	222	254	166	163	180	135	144	153	46	49	46
Howard	301	367	434	159	180	219	183	179	126	37	73	45
SIXTH CIRCUIT												
Frederick	346	214	255	142	179	104	67	82	43	250	29	24
Montgomery	503	443	408	205	222	236	102	135	119	77	48	292
SEVENTH CIRCUIT												
Calvert	340	207	219	173	142	127	89	109	72	18	13	14
Charles	305	203	282	193	131	148	83	106	115	37	39	55
Prince George's	369	476	487	177	167	196	137	163	139	8	17	25
St. Mary's	358	280	224	249	339	226	62	86	24	43	48	46
EIGHTH CIRCUIT												
Baltimore City							N/A	164*	137	49	52	69
SC	707	563	598	CC1 188	180	188						
CC	402	360	333	CC2 181	164	187						
CP	896	528	608									
STATE												
	462	423	409	178	172	177	N/A	126**	134	56	50	84

*Includes felony defendants only. Supplied by the Baltimore City State's Attorney's office.

**Includes felony defendants only from Baltimore City.

These figures differ somewhat from those printed in past reports:

(1) The figures appearing in the 1977-78 Statistical Abstract were computed excluding the shortest and lengthiest 5 percent of the cases.

(2) All figures in the 1978-79 and 1979-80 Statistical Abstract were computed by using a simple arithmetic mean, or average, but computations had the benefit of two factors not available previously:

(a) A more complete data base was used; cases closed in the report year but not reported to the AOC until a later year were included in the report year figures for 1977-78.

(b) Prior computer system design did not capture case ages of more than 999 days; thus unusually lengthy cases were not included in the computations for 1977-78.

(3) Note that a small number of lengthy cases can greatly increase an average, particularly in a small jurisdiction. See Tables CC-22, 23, 24, and 25 for a more detailed breakdown of filing-to-disposition ages.

Source: MJIS Automated Reports on Elapsed Time Between Events in Court Processing (Report #A70267 - Law; A70268 - Equity; A70272 - Criminal; A70269 - Juvenile).

TABLE CC-21

AVERAGE DAYS FROM FILING TO DISPOSITION

	LAW			EQUITY			CRIMINAL			JUVENILE		
	1977-78	1978-79	1979-80	1977-78	1978-79	1979-80	1977-78	1978-79	1979-80	1977-78	1978-79	1979-80
FIRST CIRCUIT												
Dorchester	184	231	216	103	104	95	122	106	98	26	22	52
Somerset	92	63	191	162	108	201	114	81	91	19	52	59
Wicomico	330	293	313	104	130	103	233	109	88	83	41	59
Worcester	289	182	202	201	175	180	136	135	131	67	69	80
SECOND CIRCUIT												
Caroline	293	211	282	158	167	150	90	107	111	65	46	50
Cecil	76	212	218	188	152	126	127	154	151	112	47	42
Kent	209	253	213	117	138	177	71	144	121	65	45	69
Queen Anne's	226	152	206	156	112	121	391	151	133	50	38	46
Talbot	215	171	289	104	154	192	101	98	134	53	43	36
THIRD CIRCUIT												
Baltimore	474	491	481	250	232	432	129	126	156	162	102	80
Harford	358	341	307	199	207	210	202	220	204	116	82	93
FOURTH CIRCUIT												
Allegany	317	288	425	238	233	187	87	108	144	28	25	21
Garrett	167	178	276	220	261	202	164	155	184	67	46	67
Washington	273	240	247	198	217	197	124	162	157	35	25	28
FIFTH CIRCUIT												
Anne Arundel	293	213	278	141	193	207	166	158	143	121	108	115
Carroll	146	167	260	168	172	211	156	155	175	53	57	64
Howard	165	234	460	221	237	328	187	224	169	150	155	91
SIXTH CIRCUIT												
Frederick	303	205	244	211	149	180	91	111	119	228	74	67
Montgomery	470	395	359	381	551	250	152	164	155	91	94	306
SEVENTH CIRCUIT												
Calvert	299	229	175	184	179	136	185	146	174	112	84	104
Charles	273	198	208	188	204	195	111	116	123	71	81	75
Prince George's	366	364	365	261	204	191	187	187	171	72	72	64
St. Mary's	327	297	236	251	304	230	104	110	108	54	67	67
EIGHTH CIRCUIT												
Baltimore City							189	167	156	59	57	78
SC	768	490	395	CC1 194	262	464						
CC	299	426	404	CC2 101	164	345						
CP	819	478	926									
STATE												
	442	371	375	207	236	285	166	159	155	80	71	97

These figures differ somewhat from those printed in past reports:

(1) The figures appearing in the 1977-78 Statistical Abstract were computed excluding the shortest and lengthiest 5 percent of the cases.

(2) All figures in the 1978-79 and 1979-80 Statistical Abstract were computed by using a simple arithmetic mean, or average, but computations had the benefit of two factors not available previously:

(a) A more complete data base was used; cases closed in the report year but not reported to the AOC until a later year were included in the report year figures for 1977-78.

(b) Prior computer system design did not capture case ages of more than 999 days; thus unusually lengthy cases were not included in the computations for 1977-78.

(3) Note that a small number of lengthy cases can greatly increase an average, particularly in a small jurisdiction. See Tables CC-22, 23, 24 and 25 for a more detailed breakdown of filing-to-disposition ages.

Source: MJIS Automated Reports on Elapsed Time From Filing to Disposition (Report #A70262 - Law; A70264 - Equity; A70270 - Criminal; A70266 - Juvenile).

TABLE CC-22

LAW -- AVERAGE DAYS FROM FILING TO DISPOSITION BY AGE OF CASES
AND CUMULATIVE PERCENTAGES OF DISPOSITIONS WITHIN
SPECIFIC TIME PERIODS

FISCAL 1980

	NUMBER OF CASES*	AVERAGE IN DAYS FILING TO DISPOSITION		PERCENTAGE OF TOTAL CASES DISPOSED OF LESS THAN:				
		All Cases	Excluding Cases Over 1081	61 Days	181 Days	361 Days	721 Days	1081 Days
FIRST CIRCUIT								
Dorchester	184	216	191	58.2	65.2	74.5	91.3	97.8
Somerset	128	194	143	57.0	71.1	83.6	92.2	96.1
Wicomico	247	315	281	21.9	47.0	62.3	87.4	96.4
Worcester	430	202	153	60.9	71.6	80.2	90.2	96.3
SECOND CIRCUIT								
Caroline	67	282	228	19.4	52.2	74.6	88.1	94.0
Cecil	241	218	218	37.8	56.0	74.7	95.4	100.0
Kent	58	213	213	20.7	48.3	87.9	94.8	100.0
Queen Anne's	96	206	196	42.7	57.3	80.2	95.8	99.0
Talbot	146	289	280	24.7	45.2	65.8	89.0	99.3
THIRD CIRCUIT								
Baltimore	2960	482	393	15.6	29.9	47.6	72.9	91.1
Harford	489	307	278	28.0	46.0	66.5	87.7	97.3
FOURTH CIRCUIT								
Allegany	224	425	304	30.8	41.1	57.1	74.6	88.8
Garrett	149	276	201	47.7	61.7	70.5	85.9	93.3
Washington	418	247	221	41.4	57.4	73.2	91.9	97.4
FIFTH CIRCUIT								
Anne Arundel	2543	278	229	39.3	55.6	71.3	87.9	95.7
Carroll	590	260	214	44.6	60.2	71.9	87.8	96.3
Howard	899	460	311	35.4	42.4	52.1	70.3	84.6
SIXTH CIRCUIT								
Frederick	311	245	231	30.2	48.6	76.5	93.6	98.7
Montgomery	2249	360	323	16.7	37.5	55.7	87.4	96.1
SEVENTH CIRCUIT								
Calvert	219	175	160	37.0	66.2	83.6	97.3	98.6
Charles	283	209	201	28.3	53.0	84.1	97.2	99.3
Prince George's	2847	366	337	13.1	33.9	55.6	87.6	97.0
St. Mary's	217	236	205	23.5	48.8	85.3	93.5	97.2
EIGHTH CIRCUIT								
Baltimore City	SC 3393	395	341	21.0	38.5	56.8	80.6	94.0
	CC 1759	404	330	20.6	42.9	60.0	73.1	95.1
	CP 616	926	515	4.5	12.8	22.1	37.3	56.5
STATE	21,767	375	309	24.6	42.0	59.6	81.8	93.7

*In some counties the number of terminated cases may differ slightly, and will be lower than figures appearing on other tables in this report. Differences are due to unmatched master forms which may have been submitted on cases prior to 1975.

TABLE CC-23

EQUITY -- AVERAGE DAYS FROM FILING TO DISPOSITION BY AGE OF CASES
AND CUMULATIVE PERCENTAGES OF DISPOSITIONS WITHIN
SPECIFIC TIME PERIODS

FISCAL 1980

	NUMBER OF CASES*	AVERAGE IN DAYS FILING TO DISPOSITION		PERCENTAGE OF TOTAL CASES DISPOSED OF LESS THAN:				
		All Cases	Excluding Cases Over 721	61 Days	181 Days	361 Days	721 Days	1081 Days
FIRST CIRCUIT								
Dorchester	763	95	72	62.5	88.1	94.2	97.2	99.6
Somerset	345	201	80	54.8	78.0	86.4	89.6	93.3
Wicomico	1560	103	78	61.2	85.6	92.7	97.4	99.7
Worcester	743	181	129	42.0	72.9	84.8	93.9	98.7
SECOND CIRCUIT								
Caroline	378	150	108	40.5	78.3	89.4	95.2	98.4
Cecil	1141	126	107	52.7	79.1	90.5	97.6	99.6
Kent	225	177	141	33.3	73.3	85.3	96.0	98.2
Queen Anne's	451	121	103	52.1	79.8	89.8	97.8	100.0
Talbot	319	192	151	34.8	66.1	84.3	94.7	99.1
THIRD CIRCUIT								
Baltimore	7953	432	213	17.5	43.8	57.9	76.1	90.0
Harford	1638	212	167	33.2	64.8	79.9	94.2	99.1
FOURTH CIRCUIT								
Allegany	766	187	139	34.2	70.1	86.2	94.6	98.4
Garrett	347	202	174	33.7	67.4	79.5	96.3	99.1
Washington	1216	197	155	34.5	66.9	83.1	94.7	98.8
FIFTH CIRCUIT								
Anne Arundel	5454	207	125	38.8	70.7	84.9	92.4	96.4
Carroll	1046	211	176	25.2	61.5	83.4	96.7	98.9
Howard	1649	328	185	19.0	52.9	68.7	82.2	95.3
SIXTH CIRCUIT								
Frederick	1578	180	130	39.1	74.4	85.2	94.1	98.9
Montgomery	3808	251	209	13.9	52.2	77.9	94.4	98.8
SEVENTH CIRCUIT								
Calvert	473	136	115	46.7	77.6	90.1	97.7	99.4
Charles	788	195	151	29.4	68.7	84.0	94.2	99.4
Prince George's	8592	191	159	26.0	67.2	86.1	96.4	99.1
St. Mary's	748	230	192	26.1	59.5	77.7	94.9	99.1
EIGHTH CIRCUIT								
Baltimore City	CC1 6452	464	210	14.6	42.8	59.4	73.2	85.4
	CC2 11,002	345	168	26.6	53.6	71.0	82.5	91.2
STATE	59,435	286	165	27.6	59.2	75.5	87.5	94.5

*In some counties the number of terminated cases may differ slightly, and will be lower than figures appearing on other tables in this report. Differences are due to unmatched master forms which may have been submitted on cases prior to 1975.

TABLE CC-24

CRIMINAL -- AVERAGE DAYS FROM FILING TO DISPOSITION BY AGE OF CASES
AND CUMULATIVE PERCENTAGES OF DISPOSITIONS WITHIN
SPECIFIC TIME PERIODS

FISCAL 1980

	NUMBER OF CASES*	AVERAGE IN DAYS FILING TO DISPOSITION		PERCENTAGE OF TOTAL CASES DISPOSED OF LESS THAN:				
		All Cases	Excluding Cases Over 360	61 Days	91 Days	121 Days	181 Days	361 Days
FIRST CIRCUIT								
Dorchester	141	98	96	14.9	53.2	83.7	92.9	99.3
Somerset	139	91	91	22.3	56.1	80.6	95.0	100.0
Wicomico	472	88	76	44.5	68.2	83.3	94.1	97.7
Worcester	250	131	106	25.6	48.4	64.4	83.6	96.0
SECOND CIRCUIT								
Caroline	118	111	98	21.2	50.8	72.0	94.1	97.5
Cecil	346	151	131	7.5	21.7	47.4	78.3	95.4
Kent	82	121	103	17.1	40.2	63.4	86.6	95.1
Queen Anne's	123	133	121	11.4	33.3	52.8	82.1	96.7
Talbot	182	134	111	13.7	34.1	63.7	83.5	93.4
THIRD CIRCUIT								
Baltimore	4604	156	101	30.4	51.7	64.5	79.2	92.0
Harford	759	204	147	12.6	27.5	42.3	60.2	88.9
FOURTH CIRCUIT								
Allegany	286	144	93	38.5	52.1	65.7	82.9	92.7
Garrett	84	184	135	9.5	19.0	42.9	72.6	90.5
Washington	861	157	139	9.1	23.0	40.4	74.6	96.1
FIFTH CIRCUIT								
Anne Arundel	2090	143	119	17.2	34.9	57.2	79.1	94.7
Carroll	697	175	137	9.2	25.5	44.3	68.1	91.0
Howard	871	168	128	22.8	38.8	51.0	69.3	91.6
SIXTH CIRCUIT								
Frederick	473	119	94	40.0	51.2	68.9	87.3	94.7
Montgomery	1360	155	125	25.0	37.2	48.9	72.2	94.8
SEVENTH CIRCUIT								
Calvert	217	174	106	20.3	47.5	64.1	78.8	89.4
Charles	951	123	113	15.9	37.0	55.6	88.1	97.6
Prince George's	2804	171	141	11.9	26.4	42.6	68.0	92.5
St. Mary's	176	108	106	24.4	43.8	67.6	86.4	99.4
EIGHTH CIRCUIT								
Baltimore City**	13,367	156	136	9.0	16.6	37.6	79.1	96.2
STATE**	31,453	155	127	16.1	29.6	47.9	77.7	94.6

*In some counties the number of terminated cases may differ slightly, and will be lower than figures appearing on other tables in this report. Differences are due to unmatched master forms which may have been submitted on cases prior to 1975.

**Calculated from limited case information on the automated data base. These figures do not agree with others in this report in regards to the number of criminal terminations in Baltimore City and the State.

TABLE CC-25

JUVENILE -- AVERAGE DAYS FROM FILING TO DISPOSITION BY AGE OF CASES
AND CUMULATIVE PERCENTAGES OF DISPOSITIONS WITHIN
SPECIFIC TIME PERIODS

FISCAL 1980

	NUMBER OF CASES*	AVERAGE IN OAYS FILING TO OISPOSITION		PERCENTAGE OF TOTAL CASES DISPOSED OF LESS THAN:					
		All Cases	Excluding Cases Over 271	31 Oays	61 Days	121 Days	181 Days	271 Days	361 Days
FIRST CIRCUIT									
Dorchester	195	52	22	71.3	90.8	95.9	96.9	96.9	96.9
Somerset	71	59	36	66.2	74.6	88.7	90.1	94.4	95.8
Wicomico	159	59	34	56.0	86.2	94.3	95.6	96.9	97.5
Worcester	133	80	44	46.6	75.9	88.7	95.5	96.2	97.0
SECONO CIRCUIT									
Caroline	78	50	33	51.3	89.7	96.2	96.2	96.2	97.4
Cecil	248	42	38	38.7	90.7	94.4	97.2	98.8	100.0
Kent	78	69	39	55.1	79.5	89.7	96.2	96.2	96.2
Queen Anne's	85	46	40	49.4	78.8	94.7	96.5	98.8	98.8
Talbot	120	36	36	46.7	87.5	100.0	100.0	100.0	100.0
THIRO CIRCUIT									
Baltimore	2151	80	69	18.8	52.3	84.6	93.1	97.3	98.7
Harford	665	93	72	16.8	44.2	82.1	93.1	96.2	97.3
FOURTH CIRCUIT									
Allegany	402	21	20	83.3	92.5	98.0	99.0	99.8	99.8
Garrett	130	67	51	53.8	70.0	86.2	87.7	95.4	95.4
Washington	503	28	27	69.2	89.5	98.0	98.6	99.6	100.0
FIFTH CIRCUIT									
Anne Arundel	1513	115	82	16.4	33.5	73.1	87.0	92.3	95.5
Carroll	528	64	49	33.9	71.4	92.0	94.7	97.2	97.9
Howard	420	91	53	35.0	64.0	83.6	88.6	91.9	94.8
SIXTH CIRCUIT									
Frederick	195	67	51	42.1	71.8	90.3	93.3	97.9	98.5
Montgomery	2700	306	68	25.3	34.1	60.4	72.2	76.7	80.6
SEVENTH CIRCUIT									
Calvert	323	104	56	16.1	55.4	82.0	84.2	87.3	92.0
Charles	427	75	69	11.9	45.7	89.0	97.7	98.6	99.1
Prince George's	4434	64	60	30.9	58.3	87.4	95.9	93.9	99.4
St. Mary's	241	67	54	17.4	56.4	96.7	97.5	97.9	99.2
EIGHTH CIRCUIT									
Baltimore City	12,881	78	53	34.4	66.1	90.1	94.5	96.6	97.7
STATE	28,680	97	57	32.0	59.8	85.7	92.1	94.9	96.3

*In some counties the number of terminated cases may differ slightly, and will be lower than figures appearing on other tables in this report. Differences are due to unmatched master forms which may have been submitted on cases prior to 1975.

TABLE CC-26

JUVENILE DISPOSITIONS

JULY 1, 1979 - JUNE 30, 1980
FISCAL 1980

	a. Jurisdiction Waived	b. Dismissed	c. Probation	d. Institutional Commitment	e. Charge not sustained	f. Other conclusion or disposition*	TOTAL
FIRST CIRCUIT	73	20	158	57	26	224	558
Dorchester	27	2	33	23	11	99	195
Somerset	9	3	34	8	8	9	71
Wicomico	11	1	59	17	6	65	159
Worcester	26	14	32	9	1	51	133
SECOND CIRCUIT	42	26	163	75	21	282	609
Caroline	4	0	24	10	0	40	78
Cecil	27	16	46	33	4	122	248
Kent	6	2	10	5	11	44	78
Queen Anne's	5	1	19	6	0	54	85
Talbot	0	7	64	21	6	22	120
THIRD CIRCUIT	55	33	1012	167	208	1341	2816
Baltimore	50	12	752	119	101	1117	2151
Harford	5	21	260	48	107	224	665
FOURTH CIRCUIT	27	19	343	153	35	458	1035
Allegany	3	1	102	27	8	261	402
Garrett	4	3	33	18	10	62	130
Washington	20	15	208	108	17	135	503
FIFTH CIRCUIT	41	85	783	245	369	941	2464
Anne Arundel	17	74	554	149	359	360	1513
Carroll	6	0	114	30	3	375	528
Howard	18	11	115	66	7	206	423
SIXTH CIRCUIT	27	371	395	126	232	1752	2903
Frederick	12	6	79	40	3	55	195
Montgomery	15	365	316	86	229	1697	2708
SEVENTH CIRCUIT	84	358	1859	441	234	2450	5426
Calvert	3	8	150	28	10	124	323
Charles	8	0	155	17	22	225	427
Prince George's	73	347	1468	380	186	1981	4435
St. Mary's	0	3	86	16	16	120	241
EIGHTH CIRCUIT	671	316	2854	958	262	7839	12,900
Baltimore City	671	316	2854	958	262	7839	12,900
STATE TOTALS	1020	1228	7567	2222	1387	15,287	28,711

*Includes juvenile causes disposed of by informal action.

TABLE CC-27

POPULATION AND CASELOAD PER CIRCUIT COURT JUDGE

AS OF JUNE 30, 1980

FISCAL 1980

	NUMBER OF JUDGES*	POPULATION PER JUDGE**	CASES FILED PER JUDGE		CASES TERMINATED PER JUDGE	
			CIVIL	CRIMINAL	CIVIL	CRIMINAL
FIRST CIRCUIT						
Dorchester	1	31,400	1213	157	1143	141
Somerset	1	20,400	469	149	545	139
Wicomico	2	31,700	1020	241	983	236
Worcester	2	14,550	641	168	654	125
SECOND CIRCUIT						
Caroline	1	23,200	518	100	523	118
Cecil	2	28,200	829	231	815	173
Kent	1	16,600	373	84	361	82
Queen Anne's	1	24,500	628	119	634	123
Talbot	1	26,900	571	155	585	182
THIRD CIRCUIT						
Baltimore	10	64,690	1195	417	1314	460
Harford	3	51,600	946	206	931	253
FOURTH CIRCUIT						
Allegany	2	39,800	917	138	697	143
Garrett	1	27,300	632	93	626	84
Washington	2	55,650	1220	387	1069	430
FIFTH CIRCUIT						
Anne Arundel	9	42,355	1195	212	1082	232
Carroll	2	48,550	1009	297	1085	348
Howard	3	43,566	818	220	992	290
SIXTH CIRCUIT						
Frederick	2	55,850	1113	231	1042	236
Montgomery	11	53,890	758***	147	552***	123
SEVENTH CIRCUIT						
Calvert	1	34,000	1182	170	1015	217
Charles	2	36,100	810	438	749	475
Prince George's	13	51,492	1340	209	1230	215
St. Mary's	1	55,300	1240	178	1206	176
EIGHTH CIRCUIT						
Baltimore City	23	33,352	1508	948	1591	1032
STATE	97	43,539	1540	402	1546	431

*Number of Judges as of June 30, 1980.

**Population Estimate for July 1, 1980 issued by the Maryland Center for Health Statistics.

***Juvenile causes not included since they are heard at the District Court level. Juvenile causes in all other counties are included in the civil category.

TABLE CC-28

FIVE YEAR COMPARATIVE TABLE
CASES FILED AND TERMINATED PER JUDGE

	<u>FILED</u>		<u>TERMINATED</u>	
	<u>Civil*</u>	<u>Criminal</u>	<u>Civil*</u>	<u>Criminal</u>
1975-76	1068	397	N/A	N/A
1976-77	1091	508	1031	480
1977-78	1080	397	945	361
1978-79	1162	428	1011	403
1979-80	1540	402	1546	431

*Juvenile causes in Montgomery County are not included since they are heard at the District Court level. Juvenile causes in all other counties are included in the civil category.

TABLE CC-29

CASES FILED IN THE CIRCUIT COURT

PER THOUSAND POPULATION

JULY 1, 1979 - JUNE 30, 1980

FISCAL 1980

	POPULATION*	CIVIL	CRIMINAL	TOTAL
FIRST CIRCUIT				
Dorchester	31,400	39	5	44
Somerset	20,400	23	7	30
Wicomico	63,400	32	8	40
Worcester	29,100	44	11	55
SECOND CIRCUIT				
Caroline	23,200	22	4	26
Cecil	56,400	29	8	37
Kent	16,600	22	5	27
Queen Anne's	24,500	26	5	31
Talbot	26,900	21	6	27
THIRD CIRCUIT				
Baltimore	646,900	19	6	25
Harford	154,800	18	4	22
FOURTH CIRCUIT				
Allegany	79,600	23	3	26
Garrett	27,300	23	3	26
Washington	111,300	22	7	29
FIFTH CIRCUIT				
Anne Arundel	381,200	28	5	33
Carroll	97,100	21	6	27
Howard	130,700	19	5	24
SIXTH CIRCUIT				
Frederick	111,700	20	4	24
Montgomery**	592,800	14	3	17
SEVENTH CIRCUIT				
Calvert	34,000	35	5	40
Charles	72,200	22	12	34
Prince George's	669,400	26	4	30
St. Mary's	55,300	22	3	25
EIGHTH CIRCUIT				
Baltimore City	767,100	45	28	73
STATE	4,223,300	26	9	35

*Population estimate for July 1, 1980, issued by the Maryland Center for Health Statistics.

**Juvenile causes heard at the District Court level are not included.

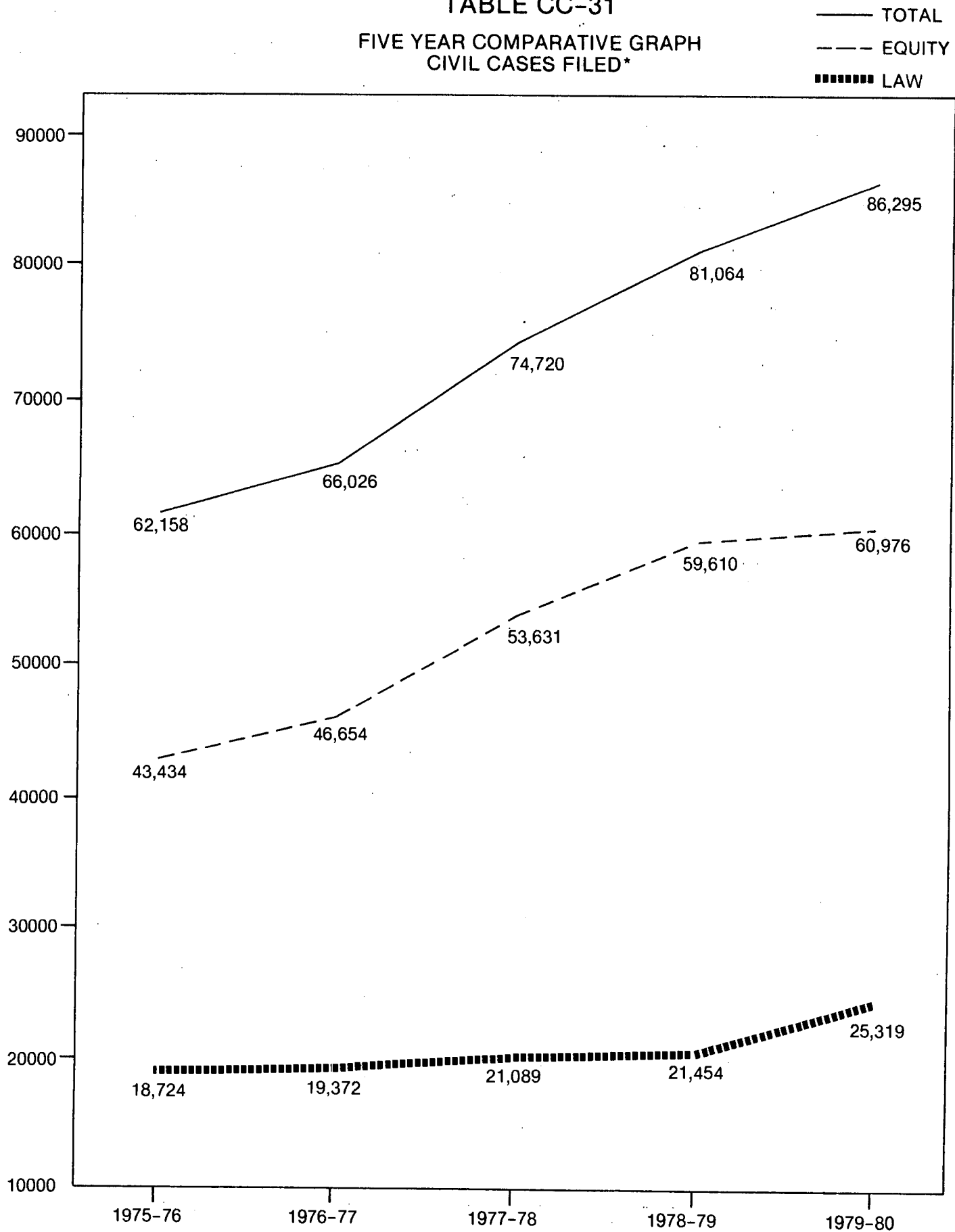
TABLE CC-30

RATIO OF JURY TRIALS TO POPULATION

JULY 1, 1979 - JUNE 30, 1980
FISCAL 1980

	<u>Number of Jury Trials</u>	<u>Population</u>	<u>Per 1,000 Population</u>
FIRST CIRCUIT			
Dorchester	22	31,400	.70
Somerset	36	20,400	1.76
Wicomico	74	63,400	1.17
Worcester	9	29,100	.31
SECOND CIRCUIT			
Caroline	11	23,200	.47
Cecil	75	56,400	1.33
Kent	19	16,600	1.14
Queen Anne's	15	24,500	.61
Talbot	10	26,900	.37
THIRD CIRCUIT			
Baltimore	120	646,900	.19
Harford	88	154,800	.57
FOURTH CIRCUIT			
Allegany	51	79,600	.64
Garrett	7	27,300	.26
Washington	121	111,300	1.09
FIFTH CIRCUIT			
Anne Arundel	272	381,200	.71
Carroll	31	97,100	.32
Howard	170	130,700	1.30
SIXTH CIRCUIT			
Frederick	44	111,700	.39
Montgomery	235	592,800	.40
SEVENTH CIRCUIT			
Calvert	33	34,000	.97
Charles	56	72,200	.77
Prince George's	457	669,400	.68
St. Mary's	46	55,300	.83
EIGHTH CIRCUIT			
Baltimore City	660	767,100	.86
STATE	2662	4,223,300	.63

TABLE CC-31
FIVE YEAR COMPARATIVE GRAPH
CIVIL CASES FILED*



*Does not include Juvenile Causes

TABLE CC-32

APPEALS FROM DISTRICT COURT AND ADMINISTRATIVE AGENCIES

JULY 1, 1979 - JUNE 30, 1980

FISCAL 1980

	LAW				CRIMINAL			TOTAL
	DISTRICT COURT		ADMINISTRATIVE AGENCIES	TOTAL	MOTOR VEHICLE	OTHER	TOTAL	
	DeNovo	On Record						
FIRST CIRCUIT								
Dorchester	2	6	81	89	8	14	22	111
Somerset	0	2	3	5	0	6	6	11
Wicomico	7	12	28	47	27	37	64	111
Worcester	2	9	18	29	45	24	69	98
SECOND CIRCUIT								
Caroline	0	3	4	7	6	5	11	18
Cecil	6	0	29	35	32	30	62	97
Kent	0	3	8	11	1	2	3	14
Queen Anne's	0	2	12	14	5	7	12	26
Talbot	5	7	2	14	12	15	27	41
THIRD CIRCUIT								
Baltimore	55	100	259	414	413	272	685	1099
Harford	15	17	53	85	56	45	101	186
FOURTH CIRCUIT								
Allegany	5	29	36	70	51	47	98	168
Garrett	1	1	1	3	12	2	14	17
Washington	10	15	69	94	30	36	66	160
FIFTH CIRCUIT								
Anne Arundel	14	51	178	243	113	126	239	482
Carroll	7	13	31	51	71	34	105	156
Howard	10	18	44	72	87	41	128	200
SIXTH CIRCUIT								
Frederick	5	4	30	39	42	15	57	96
Montgomery	39	52	188	279	123	63	186	465
SEVENTH CIRCUIT								
Calvert	2	2	20	24	9	11	20	44
Charles	5	12	18	35	27	25	52	87
Prince George's	91	79	156	326	95	140	235	561
St. Mary's	1	0	12	13	12	16	28	41
EIGHTH CIRCUIT								
Baltimore City	82	145	1111	1338	-2089-		2089	3427
STATE TOTALS								
	364	582	2391	3337	-4379-		4379	7716

TABLE CC-33

FIVE YEAR COMPARATIVE CHART
APPEALS FROM DISTRICT COURT AND ADMINISTRATIVE AGENCIES

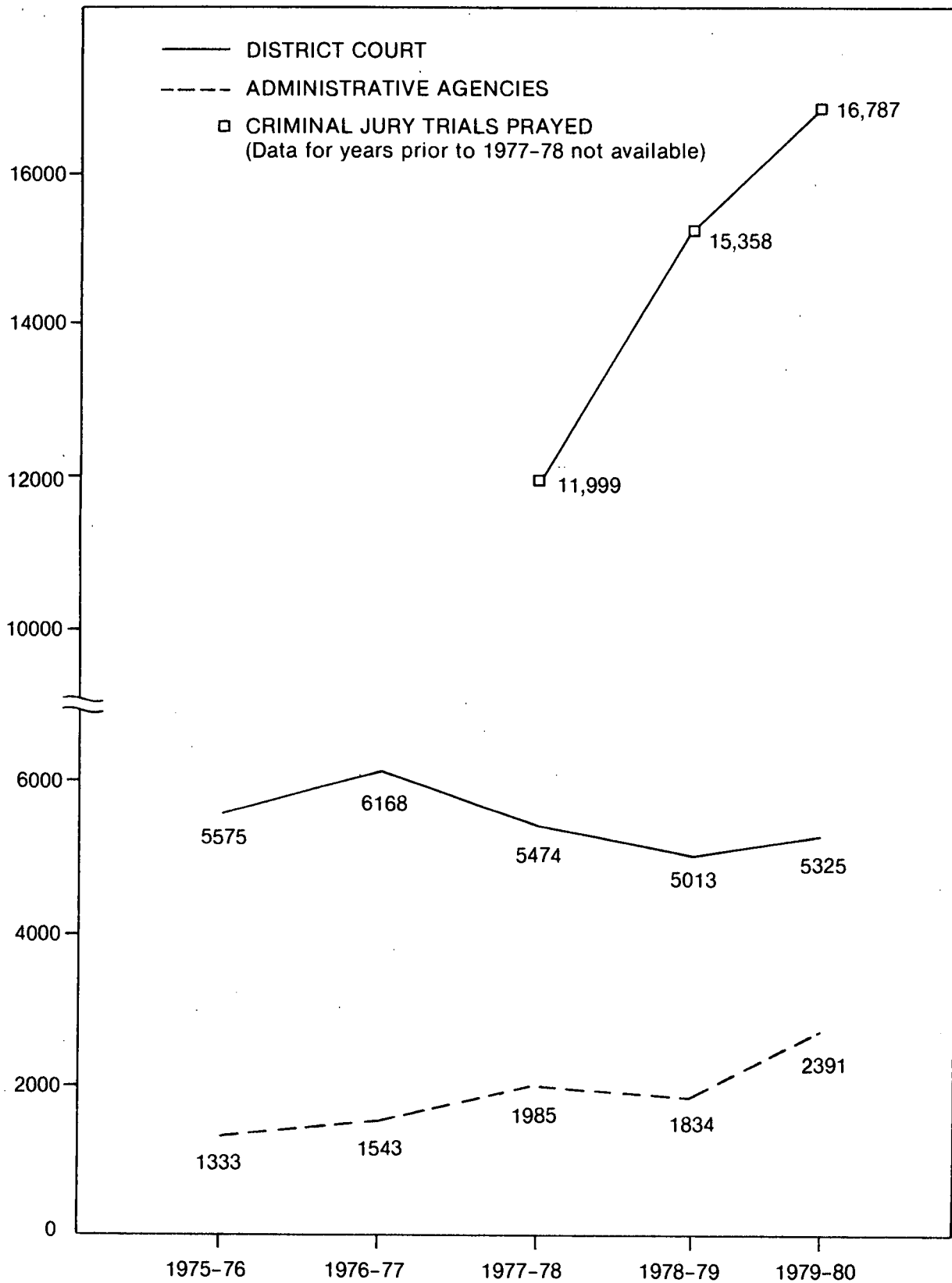


TABLE CC-34

FIVE YEAR COMPARATIVE TABLE APPEALS FROM ADMINISTRATIVE AGENCIES

	1975-76	1976-77	1977-78	1978-79	1979-80
FIRST CIRCUIT					
Dorchester	37	48	83	84	81
Somerset	1	4	5	0	3
Wicomico	16	11	17	24	28
Worcester	5	13	9	14	18
SECOND CIRCUIT					
Caroline	4	3	3	3	4
Cecil	21	9	20	24	29
Kent	5	6	6	6	8
Queen Anne's	6	9	8	9	12
Talbot	1	8	12	6	2
THIRD CIRCUIT					
Baltimore	182	205	291	208	259
Harford	33	47	45	48	53
FOURTH CIRCUIT					
Allegany	32	38	45	28	36
Garrett	2	8	5	6	1
Washington	37	37	57	60	69
FIFTH CIRCUIT					
Anne Arundel	75	103	178	156	178
Carroll	23	21	51	32	31
Howard	32	40	58	44	44
SIXTH CIRCUIT					
Frederick	32	14	18	20	30
Montgomery	150	125	137	140	188
SEVENTH CIRCUIT					
Calvert	17	13	22	21	20
Charles	10	10	9	13	18
Prince George's	124	167	135	149	156
St. Mary's	21	11	5	10	12
EIGHTH CIRCUIT					
Baltimore City	467	593	766	729	1111
STATE	1333	1543	1985	1834	2391

TABLE CC-35

FIVE YEAR COMPARATIVE TABLE

APPEALS FROM THE DISTRICT COURT

	1975-76	1976-77	1977-78	1978-79	1979-80
FIRST CIRCUIT					
Dorchester	33	23	40	29	30
Somerset	18	22	7	14	8
Wicomico	82	63	84	62	83
Worcester	56	71	50	52	80
SECOND CIRCUIT					
Caroline	13	19	16	12	14
Cecil	70	51	81	58	68
Kent	24	19	12	9	6
Queen Anne's	23	20	16	12	14
Talbot	14	26	13	41	39
THIRD CIRCUIT					
Baltimore	536	780	666	805	840
Harford	129	153	121	166	133
FOURTH CIRCUIT					
Allegany	128	91	90	91	132
Garrett	12	14	5	17	16
Washington	113	97	84	95	91
FIFTH CIRCUIT					
Anne Arundel	424	453	380	289	304
Carroll	85	124	157	103	125
Howard	195	215	192	152	156
SIXTH CIRCUIT					
Frederick	94	69	60	109	66
Montgomery	348	328	344	235	277
SEVENTH CIRCUIT					
Calvert	24	27	17	21	24
Charles	38	46	70	77	69
Prince George's	379	291	374	334	405
St. Mary's	36	28	32	34	29
EIGHTH CIRCUIT					
Baltimore City	2701	3138	2563	2196	2316
STATE	5575	6168	5474	5013	5325

TABLE CC-36

FIVE YEAR COMPARATIVE TABLE

HABEAS CORPUS AND POST CONVICTION CASES FILED

	HABEAS CORPUS					POST CONVICTION				
	1975-76	1976-77	1977-78	1978-79	1979-80	1975-76	1976-77	1977-78	1978-79	1979-80
FIRST CIRCUIT										
Dorchester	8	2	8	3	3	4	11	8	2	1
Somerset	3	0	0	2	1	3	1	1	0	0
Wicomico	1	2	1	0	1	4	13	10	11	3
Worcester	4	1	1	1	5	3	8	9	0	0
SECOND CIRCUIT										
Caroline	0	2	3	1	0	9	6	4	0	2
Cecil	10	7	11	6	6	10	14	13	8	8
Kent	2	0	0	1	0	1	0	0	0	0
Queen Anne's	4	0	9	3	2	1	6	14	6	1
Talbot	1	4	5	2	0	2	0	17	1	2
THIRD CIRCUIT										
Baltimore	108	46	45	49	70	50	118	84	42	42
Harford	7	4	3	1	5	4	18	8	8	3
FOURTH CIRCUIT										
Allegany	0	0	0	0	0	0	0	0	1	0
Garrett	3	1	0	0	0	2	5	3	0	1
Washington	8	6	8	3	0	6	2	3	6	10
FIFTH CIRCUIT										
Anne Arundel	19	23	31	13	6	10	14	25	9	4
Carroll	16	16	26	25	17	3	2	1	2	0
Howard	34	25	10	8	6	0	0	0	3	4
SIXTH CIRCUIT										
Frederick	3	0	3	0	1	2	4	2	10	7
Montgomery	40	40	42	11	1	10	10	15	4	1
SEVENTH CIRCUIT										
Calvert	2	2	1	7	5	7	0	0	15	6
Charles	5	2	4	2	2	6	11	10	5	5
Prince George's	44	28	31	25	24	58	80	74	52	62
St. Mary's	4	1	1	3	7	0	0	0	0	0
EIGHTH CIRCUIT										
Baltimore City	202	243	238	181	262	334	118	292	224	226
STATE	528	455	481	347	424	529	441	593	409	388

TABLE CC-37

APPLICATIONS FOR REVIEW OF CRIMINAL SENTENCES

JULY 1, 1979 - JUNE 30, 1980
FISCAL 1980

	Filed During Year	Withdrawn by Applicant	Terminated		
			Considered and Disposed Of		
			Original Sentence Unchanged	Original Sentence Increased	Original Sentence Decreased
FIRST CIRCUIT					
Dorchester	1	0	1	0	0
Somerset	0	0	0	0	0
Wicomico	4	0	4	0	0
Worcester	0	0	0	0	0
SECOND CIRCUIT					
Caroline	1	0	2	0	0
Cecil	8	0	6	0	0
Kent	1	0	0	0	0
Queen Anne's	0	0	0	0	0
Talbot	0	0	0	0	0
THIRD CIRCUIT					
Baltimore	18	0	21	0	5
Harford	8	0	10	0	0
FOURTH CIRCUIT					
Allegany	3	0	1	0	0
Garrett	1	0	1	0	0
Washington	21	3	13	0	1
FIFTH CIRCUIT					
Anne Arundel	38	2	18	0	0
Carroll	8	0	2	0	0
Howard	0	0	1	0	0
SIXTH CIRCUIT					
Frederick	4	2	4	0	2
Montgomery	19	7	18	2	5
SEVENTH CIRCUIT					
Calvert	2	1	0	0	0
Charles	2	0	2	0	0
Prince George's	40	2	24	0	0
St. Mary's	8	1	8	0	0
EIGHTH CIRCUIT					
Baltimore City	83	2	90	0	0
STATE	270	20	226	2	13

THE DISTRICT COURT



THE DISTRICT COURT

The District Court processed 581,488 motor vehicle cases and 458,726 civil cases during Fiscal 1980. Statistics for criminal cases were unavailable at the time of publication due to data processing problems. Not included in the above figures were 2,527 juvenile filings in the District Court for Montgomery County.

Statewide, 178,284 motor vehicle cases were tried, with the balance of 403,204 being disposed of without trial by payment or forfeiture. The reader should be aware of the fact that 87,770 motor vehicle cases paid in District 6 (Montgomery County) or 8 (Baltimore County) are included in the total caseload (see Table DC-2) but are not included in the figures for those two districts since separate tabulations could not be made. Baltimore County registered the most motor vehicle trials, 39,286 followed by Baltimore City with 33,488 and Prince George's County with 27,214. The smallest number was recorded in Kent County with 226.

Civil filings increased by 8.3 percent from 1978-79 to 1979-80. Baltimore City recorded the most civil actions filed with 169,273, 36.9 percent of the statewide

total. All counties noted increases in civil filings except one, Kent. Landlord and tenant disputes accounted for 70.4 percent of the total civil caseload.

Statistical charts reflecting the caseload of the District Court will be found on the following pages.

TABLE DC-1

MOTOR VEHICLE AND CIVIL CASES FILED OR PROCESSED IN THE DISTRICT COURT OF MARYLAND

JULY 1, 1979 - JUNE 30, 1980
FISCAL 1980

	<u>MOTOR VEHICLE</u>	<u>CIVIL</u>	<u>TOTAL</u>
DISTRICT 1 Baltimore City	61,060	169,273	230,333
DISTRICT 2 Dorchester	4860	1819	6679
Somerset	3265	847	4112
Wicomico	12,006	3695	15,701
Worcester	9537	1683	11,220
DISTRICT 3 Caroline	3120	895	4015
Cecil	29,469	1489	30,958
Kent	1765	572	2337
Queen Anne's	4956	930	5886
Talbot	5320	914	6234
DISTRICT 4 Calvert	6266	1276	7542
Charles	10,515	1867	12,382
St. Mary's	7275	1663	8938
DISTRICT 5 Prince George's	109,434	114,893	224,327
DISTRICT 6 Montgomery	17,524	37,395	54,919
DISTRICT 7 Anne Arundel	39,685	25,963	65,648
DISTRICT 8 Baltimore	48,423	66,407	114,830
DISTRICT 9 Harford	24,153	7539	31,692
DISTRICT 10 Carroll	8679	2797	11,476
Howard	26,217	6254	32,471
DISTRICT 11 Frederick	24,722	3539	28,261
Washington	19,598	4935	24,533
DISTRICT 12 Allegany	11,123	1406	12,529
Garrett	4746	675	5421
STATE	581,488*	458,726	1,040,214

*Total includes 87,770 cases paid in Districts 6 or 8 that were not tabulated by separate jurisdiction.

TABLE DC-2

MOTOR VEHICLE CASES PROCESSED BY THE
DISTRICT COURT OF MARYLAND

JULY 1, 1979 - JUNE 30, 1980
FISCAL 1980

	CASES TRIED*	CASES PAID**	TOTAL CASES
DISTRICT 1 Baltimore City	33,488	27,572	61,060
DISTRICT 2 Dorchester	909	3951	4860
Somerset	430	2835	3265
Wicomico	2101	9905	12,006
Worcester	1721	7816	9537
DISTRICT 3 Caroline	558	2562	3120
Cecil	3585	25,884	29,469
Kent	226	1539	1765
Queen Anne's	668	4288	4956
Talbot	1212	4108	5320
DISTRICT 4 Calvert	1346	4920	6266
Charles	1638	8877	10,515
St. Mary's	1164	6111	7275
DISTRICT 5 Prince George's	27,214	82,220	109,434
DISTRICT 6 Montgomery	14,004	3520	17,524
DISTRICT 7 Anne Arundel	19,392	20,293	39,685
DISTRICT 8 Baltimore	39,286	9137	48,423
DISTRICT 9 Harford	7657	16,496	24,153
DISTRICT 10 Carroll	3116	5563	8679
Howard	8061	18,156	26,217
DISTRICT 11 Frederick	4087	20,635	24,722
Washington	2625	16,973	19,598
DISTRICT 12 Allegany	2974	8149	11,123
Garrett	822	3924	4746
STATE	178,284	403,204***	581,488***

*Includes guilty, not guilty, and probation before judgment.

**Includes collateral forfeited and citations paid without court appearance.

***Totals include 87,770 cases paid in Districts 6 or 8 that were not tabulated by separate jurisdiction.

TABLE DC-3

CIVIL CASES FILED IN THE DISTRICT COURT OF MARYLAND

JULY 1, 1979 - JUNE 30, 1980
FISCAL 1980

	LANDLORD AND TENANT CASES		CONTRACT AND TORT CASES		OTHER CASES		TOTALS	
	Filed	Contested	Filed	Contested	Filed	Hearings Held	Filed	Contested
DISTRICT 1 Baltimore City	131,604	13,858	33,857	3269	3812	731	169,273	17,858
DISTRICT 2 Dorchester	537	10	1162	83	120	42	1819	135
Somerset	81	52	655	119	111	61	847	232
Wicomico	1165	13	2210	184	320	225	3695	422
Worcester	186	62	1333	166	164	91	1683	319
DISTRICT 3 Caroline	96	54	739	433	60	15	895	502
Cecil	293	186	1091	644	105	31	1489	861
Kent	61	22	476	41	35	7	572	70
Queen Anne's	63	11	810	30	57	5	930	46
Talbot	97	17	759	84	58	28	914	129
DISTRICT 4 Calvert	58	27	1132	113	86	31	1276	171
Charles	252	33	1337	145	278	135	1867	313
St. Mary's	291	85	1230	157	142	49	1663	291
DISTRICT 5 Prince George's	91,645	6900	20,597	2888	2651	868	114,893	10,656
DISTRICT 6 Montgomery*	22,402	870	13,567	1486	1426	86	37,395	2442
DISTRICT 7 Anne Arundel	15,185	1580	9870	1205	908	562	25,963	3347
DISTRICT 8 Baltimore	49,256	1872	15,139	3010	2012	1070	66,407	5952
DISTRICT 9 Harford	3385	215	3886	324	268	48	7539	587
DISTRICT 10 Carroll	706	59	1846	122	245	38	2797	219
Howard	3276	199	2646	875	332	75	6254	1149
DISTRICT 11 Frederick	902	71	2242	199	395	46	3539	316
Washington	1277	134	3380	186	278	74	4935	394
DISTRICT 12 Allegany	155	63	1202	273	49	32	1406	368
Garrett	36	4	620	35	19	5	675	44
STATE	323,009	26,397	121,786	16,071	13,931	4355	458,726	46,823

*Juvenile Causes not included.

TABLE DC-4

FIVE YEAR COMPARATIVE TABLE

MOTOR VEHICLE, CRIMINAL, AND CIVIL CASES FILED IN THE DISTRICT COURT*

	1975-76	1976-77	1977-78	1978-79	1979-80
DISTRICT 1					
Baltimore City	302,102	302,507	295,798	270,162	230,333
DISTRICT 2					
Dorchester	7596	9569	8786	6620	6679
Somerset	4569	6264	6191	4767	4112
Wicomico	13,690	14,284	15,492	16,117	15,701
Worcester	11,590	10,563	9290	9701	11,220
DISTRICT 3					
Caroline	4117	7058	5777	4668	4015
Cecil	33,814	34,401	38,654	33,365	30,958
Kent	3355	3829	3770	3652	2337
Queen Anne's	6444	7337	6988	6285	5886
Talbot	7739	7272	6991	6562	6234
DISTRICT 4					
Calvert	8052	7400	7955	7441	7542
Charles	13,784	12,780	12,534	12,357	12,382
St. Mary's	10,084	9040	8848	9847	8938
DISTRICT 5					
Prince George's	206,884	236,841	241,791	227,970	224,327
DISTRICT 6					
Montgomery	118,264	105,803	105,368	114,277	54,919
DISTRICT 7					
Anne Arundel	70,405	72,735	71,406	73,023	65,648
DISTRICT 8					
Baltimore	149,638	161,337	183,754	184,507	114,830
DISTRICT 9					
Harford	42,019	41,060	38,232	34,628	31,692
DISTRICT 10					
Carroll	13,755	13,928	14,931	14,813	11,476
Howard	26,038	28,453	32,475	33,309	32,471
DISTRICT 11					
Frederick	26,336	25,034	29,142	26,993	28,261
Washington	25,177	22,908	23,432	22,816	24,533
DISTRICT 12					
Allegany	11,329	10,448	10,453	11,796	12,529
Garrett	4280	4674	4649	5275	5421
STATE	1,121,061	1,155,525	1,182,707	1,140,951	1,040,214**

*Criminal figures not included in 1979-80.

**Total includes 87,770 motor vehicle cases paid in Districts 6 or 8 that were not tabulated by separate jurisdiction.

TABLE DC-5

FIVE YEAR COMPARATIVE TABLE
MOTOR VEHICLE CASES
PROCESSED BY THE DISTRICT COURT

	1975-76	1976-77	1977-78	1978-79	1979-80
DISTRICT 1 Baltimore City	100,050	93,880	90,861	69,892	61,060
DISTRICT 2 Dorchester	5500	7168	6560	4469	4860
Somerset	3078	4678	4944	3491	3265
Wicomico	9961	9962	11,068	11,551	12,006
Worcester	8503	7472	6457	6986	9537
DISTRICT 3 Caroline	3271	6106	4806	3739	3120
Cecil	31,229	31,636	35,898	30,559	29,469
Kent	2414	2778	2945	2753	1765
Queen Anne's	5719	6579	6142	5279	4956
Talbot	6642	6168	5805	5315	5320
DISTRICT 4 Calvert	6884	6025	6555	5917	6266
Charles	11,288	10,294	9960	9610	10,515
St. Mary's	7761	6795	6719	7639	7275
DISTRICT 5 Prince George's	126,487	136,958	132,588	112,424	109,434
DISTRICT 6 Montgomery	86,354	69,675	65,661	72,674	17,524
DISTRICT 7 Anne Arundel	45,847	46,562	45,100	44,143	39,685
DISTRICT 8 Baltimore	95,763	102,687	119,552	116,341	48,423
DISTRICT 9 Harford	34,631	32,966	29,968	26,319	24,153
DISTRICT 10 Carroll	11,048	11,127	11,862	11,137	8679
Howard	20,396	22,451	25,448	25,696	26,217
DISTRICT 11 Frederick	22,025	20,775	24,751	22,094	24,722
Washington	20,793	18,263	18,073	17,035	19,598
DISTRICT 12 Allegany	8541	7768	7900	9142	11,123
Garrett	3488	3743	3622	4203	4746
STATE	677,673	672,516	683,245	628,408	581,488*

*Total includes 87,770 cases paid in Districts 6 or 8 that were not tabulated by separate jurisdiction.

TABLE DC-6

FOUR YEAR COMPARATIVE TABLE
CRIMINAL CASES BY THE NUMBER OF DEFENDANTS CHARGED
PROCESSED IN THE DISTRICT COURT*

	1975-76	1976-77	1977-78	1978-79
DISTRICT 1				
Baltimore City	46,277	47,362	41,502	35,647
DISTRICT 2				
Dorchester	1120	1160	965	740
Somerset	787	783	578	549
Wicomico	1720	1965	1359	1327
Worcester	1645	1549	1349	1066
DISTRICT 3				
Caroline	436	425	374	210
Cecil	1437	1584	1500	1388
Kent	400	399	304	324
Queen Anne's	298	287	286	256
Talbot	604	564	582	613
DISTRICT 4				
Calvert	622	685	493	476
Charles	1559	1258	1164	1139
St. Mary's	1441	1113	963	921
DISTRICT 5				
Prince George's	13,363	13,939	10,868	8282
DISTRICT 6				
Montgomery	6582	7858	8380	5298
DISTRICT 7				
Anne Arundel	8830	8065	7907	7037
DISTRICT 8				
Baltimore	11,572	10,797	11,271	12,424
DISTRICT 9				
Harford	2399	2575	2283	2273
DISTRICT 10				
Carroll	947	1111	1167	1061
Howard	1980	1999	2234	1909
DISTRICT 11				
Frederick	2319	2161	1950	1786
Washington	1986	1939	1852	2141
DISTRICT 12				
Allegany	1858	1704	1426	1509
Garrett	394	391	445	463
STATE	110,576	111,673	101,202	88,839

*Figures for 1979-80 not available.

TABLE DC-7

FIVE YEAR COMPARATIVE TABLE

CIVIL CASES
FILED IN THE DISTRICT COURT

	1975-76	1976-77	1977-78	1978-79	1979-80
DISTRICT 1					
Baltimore City	155,775	161,265	163,435	164,623	169,273
DISTRICT 2					
Dorchester	976	1241	1261	1411	1819
Somerset	704	803	669	727	847
Wicomico	2009	2357	3065	3239	3695
Worcester	1442	1542	1484	1649	1683
DISTRICT 3					
Caroline	410	527	597	719	895
Cecil	1148	1181	1256	1418	1489
Kent	541	652	521	575	572
Queen Anne's	427	471	560	750	930
Talbot	493	540	604	634	914
DISTRICT 4					
Calvert	546	690	907	1048	1276
Charles	937	1228	1410	1608	1867
St. Mary's	882	1132	1166	1287	1663
DISTRICT 5					
Prince George's	67,034	85,944	98,335	107,264	114,893
DISTRICT 6					
Montgomery	25,328	28,270	31,327	36,305	37,395
DISTRICT 7					
Anne Arundel	15,728	18,108	18,399	21,843	25,963
DISTRICT 8					
Baltimore	42,303	47,853	52,931	55,742	66,407
DISTRICT 9					
Harford	4989	5519	5981	6036	7539
DISTRICT 10					
Carroll	1760	1690	1902	2615	2797
Howard	3662	4003	4793	5704	6254
DISTRICT 11					
Frederick	1992	2098	2441	3113	3539
Washington	2398	2706	3507	3640	4935
DISTRICT 12					
Allegany	930	976	1127	1145	1406
Garrett	398	540	582	609	675
STATE	332,812	371,336	398,260	423,704	458,726

TABLE DC-8

POPULATION AND CASELOAD PER DISTRICT COURT JUDGE*
AS OF JUNE 30, 1980

FISCAL 1980

	NUMBER OF JUDGES	POPULATION PER JUDGE**	CASES FILED PER JUDGE		
			Civil	Motor Vehicle	Total
DISTRICT 1 Baltimore City	22	34,868	7694	2775	10,469
DISTRICT 2 Dorchester	1	31,400	1819	4860	6679
Somerset	1	20,400	847	3265	4112
Wicomico	1	63,400	3695	12,006	15,701
Worcester	1	29,100	1683	9537	11,220
DISTRICT 3 Caroline	1	23,200	895	3120	4015
Cecil	2	28,200	745	14,735	15,480
Kent	1	16,600	572	1765	2337
Queen Anne's	1	24,500	930	4956	5886
Talbot	1	26,900	914	5320	6234
DISTRICT 4 Calvert	1	34,000	1276	6266	7542
Charles	1	72,200	1867	10,515	12,382
St. Mary's	1	55,300	1663	7275	8938
DISTRICT 5 Prince George's	9	74,378	12,766	12,159	24,925
DISTRICT 6 Montgomery	7***	84,686	5342	2503****	7845
DISTRICT 7 Anne Arundel	6	63,533	4327	6614	10,941
DISTRICT 8 Baltimore	12	53,908	5534	4035****	9569
DISTRICT 9 Harford	3	51,600	2513	8051	10,564
DISTRICT 10 Carroll	2	48,550	1399	4340	5739
Howard	2	65,350	3127	13,109	16,236
DISTRICT 11 Frederick	2	55,850	1770	12,361	14,131
Washington	2	55,650	2468	9799	12,267
DISTRICT 12 Allegany	2	39,800	703	5562	6265
Garrett	1	27,300	675	4746	5421
STATE	83	50,883	5527	7006	12,533

*Chief Judge of District Court not included in statistics. Criminal filings not included.
Number of Judges as of June 30, 1980.

**Population Estimate for July 1, 1980, issued by the Maryland Center for Health Statistics.

***Two Juvenile Court judges and Juvenile Causes omitted as included in Juvenile statistics.

****Figures do not include taking into consideration the 87,770 paid cases that could not be tabulated by separate jurisdiction.

TABLE DC-9

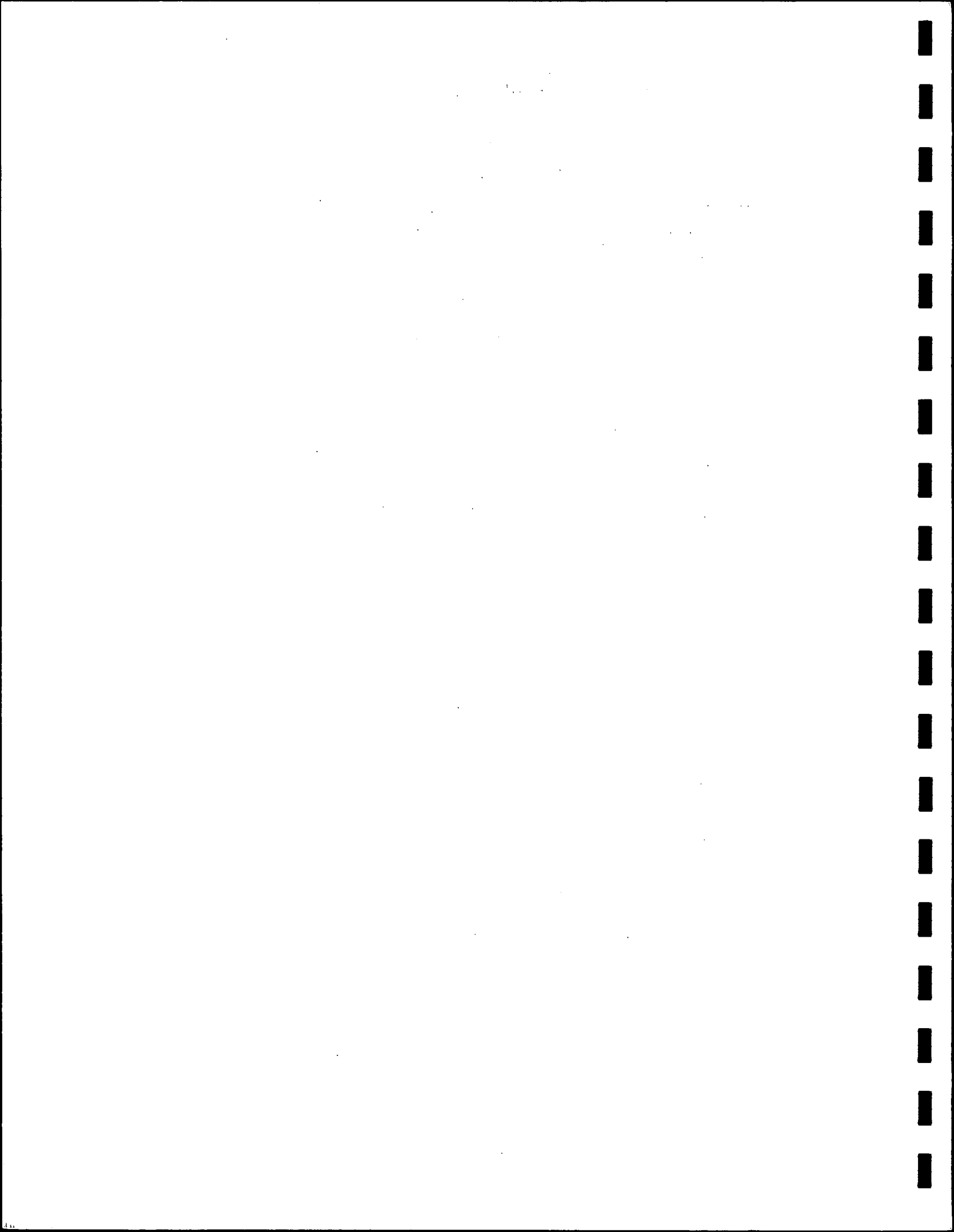
CASES FILED OR PROCESSED IN THE DISTRICT COURT
PER THOUSAND POPULATION

JULY 1, 1979 - JUNE 30, 1980
FISCAL 1980

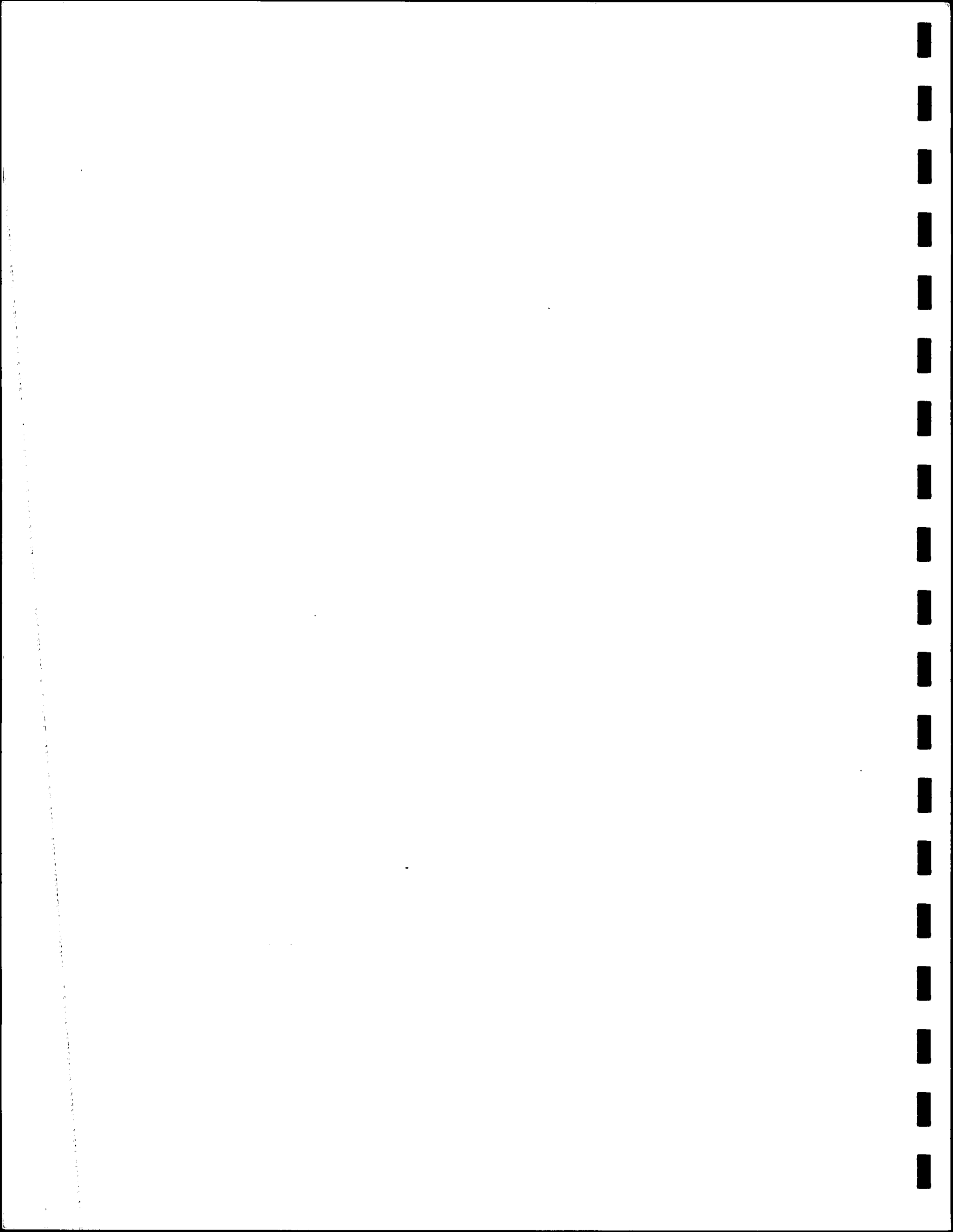
	POPULATION*	CIVIL	MOTOR VEHICLE	TOTAL
DISTRICT 1 Baltimore City	767,100	220	79	299
DISTRICT 2 Dorchester	31,400	58	155	213
Somerset	20,400	41	160	201
Wicomico	63,400	58	189	247
Worcester	29,100	58	328	386
DISTRICT 3 Caroline	23,200	39	135	174
Cecil	56,400	26	522	548
Kent	16,600	34	106	140
Queen Anne's	24,500	38	202	240
Talbot	26,900	34	198	232
DISTRICT 4 Calvert	34,000	37	184	221
Charles	72,200	26	145	171
St. Mary's	55,300	30	131	161
DISTRICT 5 Prince George's	669,400	172	163	335
DISTRICT 6 Montgomery	592,800	63	30**	93
DISTRICT 7 Anne Arundel	381,200	68	104	172
DISTRICT 8 Baltimore	646,900	103	75**	178
DISTRICT 9 Harford	154,800	49	156	205
DISTRICT 10 Carroll	97,100	29	89	118
Howard	130,700	48	201	249
DISTRICT 11 Frederick	111,700	32	221	253
Washington	111,300	44	176	220
DISTRICT 12 Allegany	79,600	18	140	158
Garrett	27,300	25	174	199
STATE	4,223,300	109	138	247

*Population estimate for July 1, 1980, issued by the Maryland Center for Health Statistics. Criminal figures not included.

**Figures do not include taking into consideration the 87,770 paid cases that could not be tabulated by separate jurisdiction.



APPENDIX



COMPARISON OF RATE IN FILINGS
AND GROWTH IN JUDGESHIPS
IN THE COURTS OF MARYLAND

	<u>1975-76</u>	<u>1979-80</u>	<u>Percent Change</u>
COURT OF APPEALS			
Number of Judges	7	7	0.0%
Filings During Year	166	149	-10.2%
COURT OF SPECIAL APPEALS			
Number of Judges	12	13	+8.3%
Filings During Year	1427	1771	+24.1%
CIRCUIT COURTS			
Number of Judges	85	97	+14.1%
Filings During Year	124,275	151,946	+22.3%
DISTRICT COURT			
Number of Judges	83	86	+3.6%
Filings During Year*	1,121,061	N/A	--
OVERALL TOTALS			
Number of Judges	187	203	+8.5%
Filings During Year	1,246,929	N/A	--

*Includes criminal figures tabulated on a defendant basis rather than by offense.

THE STATE BOARD OF LAW EXAMINERS

The Hon. Jerrold V. Powers, Chairman (Retired Judge, Court of Special Appeals)

Charles H. Dorsey, Jr., Esquire, Baltimore City Bar

William H. Price, II, Esquire, Talbot County Bar

William F. Abell, Jr., Esquire, Montgomery County Bar

David C. Danecker, Esquire, Baltimore City Bar

M. Natalie McSherry, Esquire, Baltimore City Bar

J. Frederick Sharer, Esquire, Allegany County Bar

Results of examinations given by the State Board of Law Examiners during Fiscal Year 1980 are as follows:

EXAMINATION	NUMBER OF CANDIDATES	TOTAL SUCCESSFUL CANDIDATES	NUMBER OF CANDIDATES TAKING FIRST TIME	NUMBER OF CANDIDATES PASSING FIRST TIME*
SUMMER 1979 (July)	652	412 (63.19%)	506	369 (72.92%)
Graduates University of Baltimore	210	106 (50.47%)	138	84 (60.86%)
Graduates University of Maryland	206	149 (72.33%)	176	139 (78.97%)
Graduates Out-of-State Law Schools	236	157 (66.52%)	192	146 (76.04%)
WINTER 1980 (February)	429	251 (58.50%)	219	148 (67.57%)
Graduates University of Baltimore	157	83 (52.86%)	62	42 (67.74%)
Graduates University of Maryland	80	50 (62.50%)	29	20 (68.96%)
Graduates Out-of-State Law Schools	192	118 (61.45%)	128	86 (67.18%)

*Percentages are based upon the number of first-time candidates.

Hon. A. James Smith, Clerk, Circuit Court for Wicomico
County

Melvin J. Sykes, Esq., Baltimore City Bar

Arnold M. Weiner, Esq., Baltimore City Bar

Prof. Larry S. Gibson, Reporter

Linda Richards, Assistant Reporter

THE STANDING COMMITTEE ON RULES OF PRACTICE AND PROCEDURE

Hon. David Ross, Chairman; Supreme Bench of Baltimore City
Hon. Robert M. Bell, Supreme Bench of Baltimore City
Hon. J. Louis Boublitz, District Court for Washington County
Lowell R. Bowen, Esq., Baltimore City Bar
Robert R. Bowie, Esq., Talbot County Bar
Albert D. Brault, Esq., Montgomery County Bar
Hon. Jerome F. Connell, State Senator, Anne Arundel County
Leo William Dunn, Jr., Esq., Prince George's County Bar
William A. Franch, Esq., Anne Arundel County Bar
Judson P. Garrett, Jr., Esq., Chief Legislative Officer to
the Governor
John O. Herrmann, Esq., Baltimore City Bar
Hon. Frederick W. Invernizzi, District Court for Baltimore
City (retired)
Alexander G. Jones, Esq., Somerset County Bar
Dean Michael J. Kelly, University of Maryland School of Law
James J. Lombardi, Esq., Prince George's County Bar
Hon. John F. McAuliffe, Circuit Court for Montgomery County
Paul V. Niemeyer, Esq., Baltimore City Bar
George A. Nilson, Esq., Deputy Attorney General of Maryland
Anne C. Ogletree, Esq., Caroline County Bar
Hon. Joseph E. Owens, Chairman, Judiciary Committee, House
of Delegates of Maryland
Hon. Kenneth C. Proctor, Circuit Court for Baltimore County
(retired); Emeritus
Robert J. Ryan, Esq., Baltimore County Bar

APPELLATE JUDICIAL NOMINATING COMMISSION

H. Vernon Eney, Esq., Chairman

John W. T. Webb, Esq.	Dorothy Startt
E. Scott Moore, Esq.	Harry Ratrie
James J. Cromwell, Esq.	Gloria Cole
A. Lee Haislip, Jr., Esq.	Dean John M. Sine
James B. Dudley, Esq.	George W. Settle, M.D.
Robert J. Thieblot, Esq.	

TRIAL COURT JUDICIAL NOMINATING COMMISSIONS

First Judicial Circuit

John R. Purnell, Chairman

Lionel Bennett, Esq.	Walter Jones
Charles E. Hearne, Jr., Esq.	Audrey Stewart
Richard M. Matthews, Esq.	Norman Polk
Vaughn E. Richardson, Esq.	Harland Cottman
Harold B. Gordy, Jr., Esq.	Herman J. Stevens
Henry P. Walters, Esq.	Calvin S. Dean

Second Judicial Circuit

Doris P. Scott, Esq., Chairperson

L. Clark Ewing, Esq.	Hugh M. Gordy
Frank C. Sherrard, Esq.	Robert E. Bryson
David C. Bryan, Esq.	Joseph H. McLain, Ph.D.
Ernest S. Cookerly, Esq.	James O. Pippin, Jr.
Roland C. Kent, Esq.	J. Howard Anthony
	Grace McCool

Third Judicial Circuit

James H. Cook, Esq., Chairman

Thomas G. Bodie, Esq.	Louis Akers
Alfred L. Brennan, Esq.	Benedict A. Pokrywka
Francis N. Iglehart, Jr., Esq.	Sarah Whiting
J. Earle Plumhoff, Esq.	Eddie C. Brown
Richard A. Reid, Esq.	Selena Gaskins
Donald G. Smith, Esq.	Robert Plummer

Fourth Judicial Circuit

F. Perry Smith, Jr., Chairman

W. Kennedy Boone, III, Esq.	David H. Miller, M.D.
Irving M. Einbinder, Esq.	Anne L. Gormer
W. Dwight Stover, Esq.	Dorothy Lueba
John H. Urner, Esq.	Lillian Tumbusch
Thomas N. Berry, Esq.	Joseph H. McElwee
Robert H. Reinhart, Esq.	William L. Huff

Fifth Judicial Circuit

Lewis Straughn Nippard, Esq., Chairman

Richard G. Anderson, Esq.	Walter E. Morgan
James K. Carmody, Esq.	Shirley Hager Hobbs
William B. Dulany, Esq.	Ruth Uhrig
John B. Wright, Esq.	Thomas Yeager
Martin B. Lessans, Esq.	Marion Satterthwaite
Thomas A. Garland, Esq.	George Pettigrew

Sixth Judicial Circuit

Alfred L. Scanlan, Esq., Chairman

Albert D. Brault, Esq.	Charles F. Wilding
William M. Canby, Esq.	Joseph P. Burke
Thomas L. Craven, Esq.	Susan P. Messitte
James T. Wharton, Esq.	Miriam S. Raff
Herbert L. Rollins, Esq.	Donald B. Rice
Roger W. Titus, Esq.	Virginia Lewis, Ph.D.

Seventh Judicial Circuit

James C. Chapin, Esq., Chairman

Paul J. Bailey, Esq.	Rev. Andrew Johnson
Thomas F. Mudd, Esq.	Annette Funn
Thomas L. Starkey, Esq.	Thomas Amenta
Ralph W. Powers, Jr., Esq.	John Knight Parlett
Richard H. Sothoron, Jr., Esq.	Shirley E. Colleary
Benjamin R. Wolman, Esq.	Warren E. Barley

Eighth Judicial Circuit

Shale D. Stiller, Esq., Chairman

Kathleen O'Ferrall Friedman, Esq.

Andrew Jay Graham, Esq.

Theodore S. Miller, Esq.

Leroy W. Preston, Esq.

George L. Russell, Jr., Esq.

Pearl Cole Brackett, Ph.D.

William H. C. Wilson

M. Gordon Wolman, Ph.D.

Antonia Keane

Travis W. Vauls

Walter Vickers, Jr.



Administrative Office of the Courts
Courts of Appeal Building
Annapolis, MD 21401
(301) 269-2141